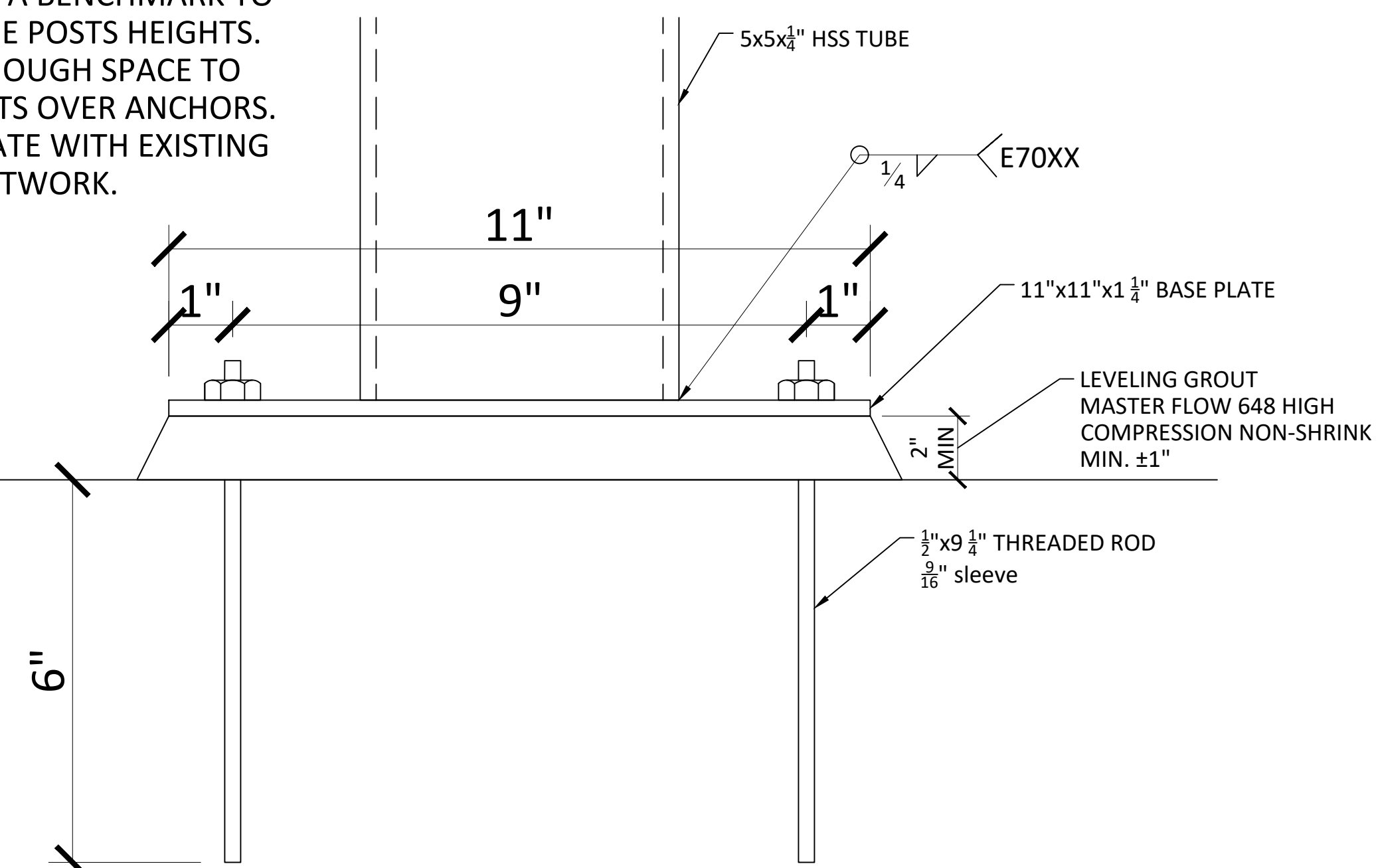
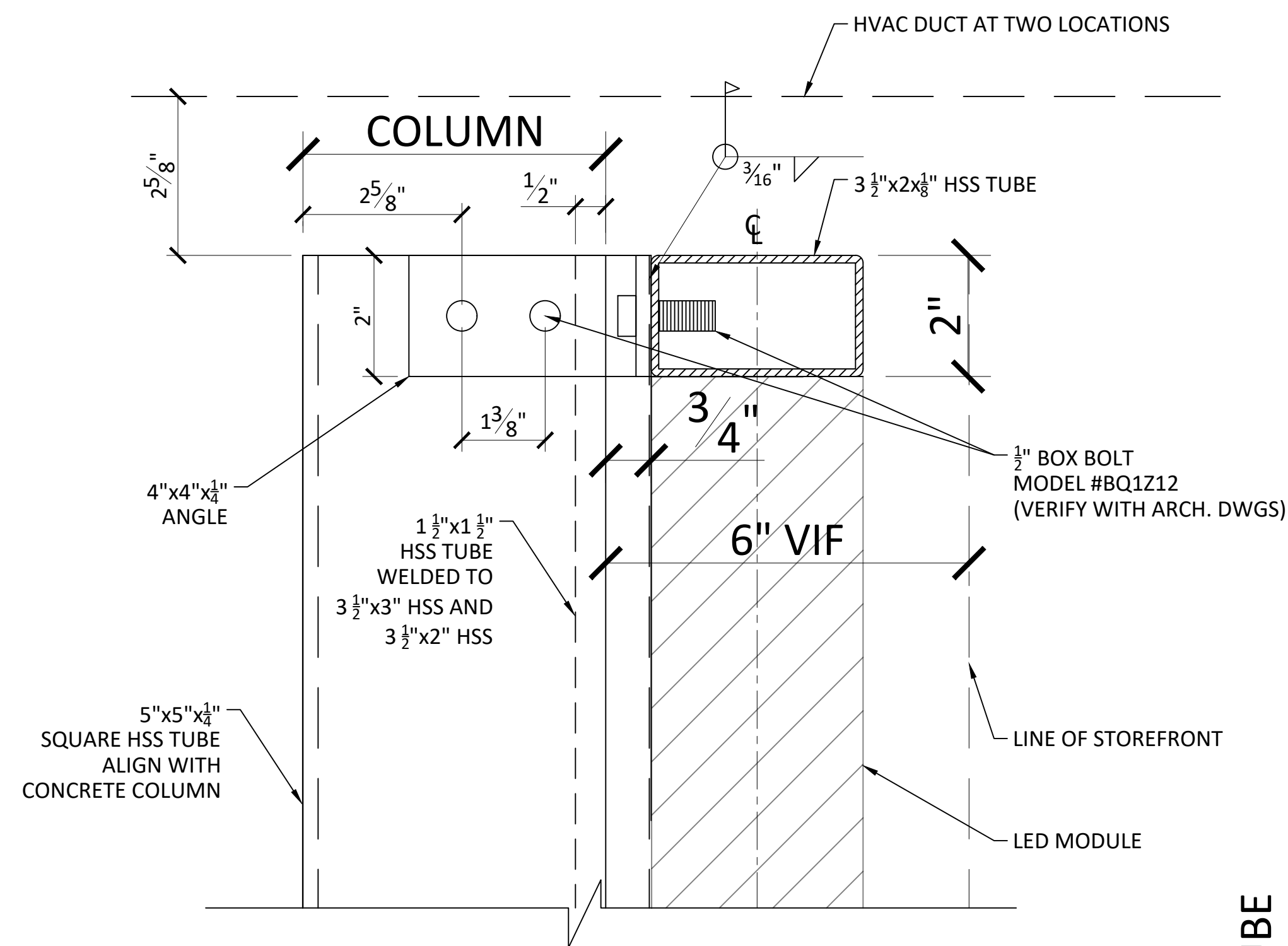


1 BASE PLATE PLAN
SCALE: 6" = 1'-0"

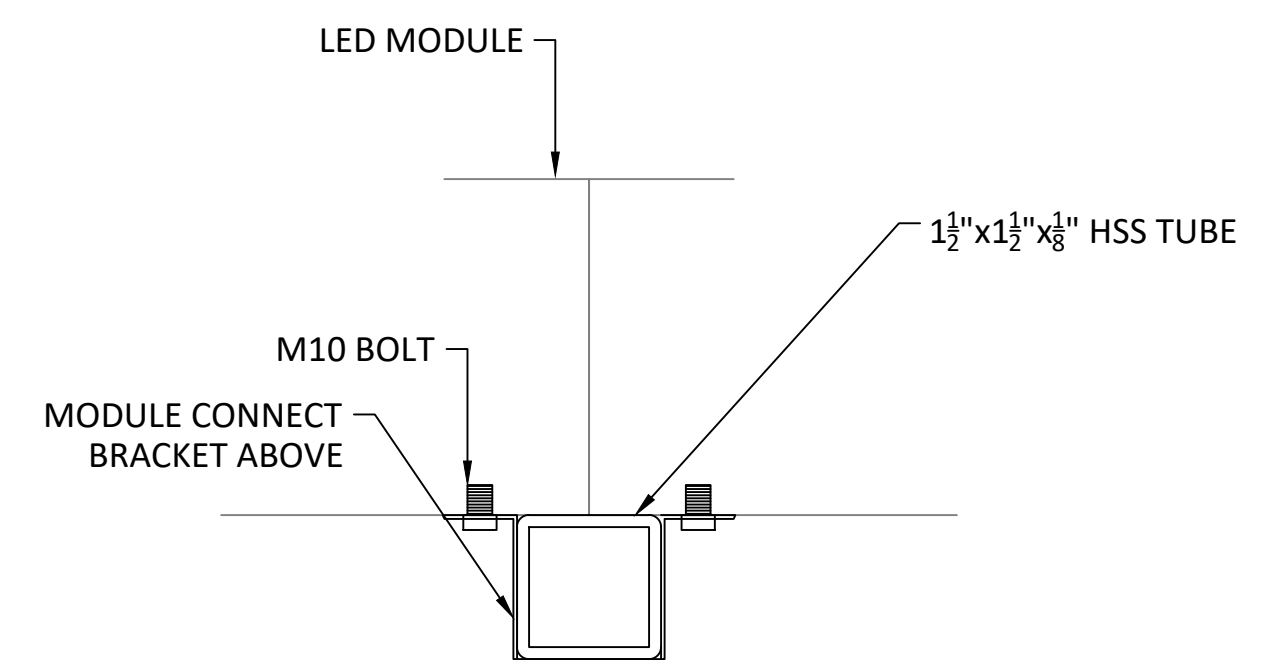
NOTE:
ESTABLISH A BENCHMARK TO DETERMINE POSTS HEIGHTS. ALLOW ENOUGH SPACE TO RAISE POSTS OVER ANCHORS. COORDINATE WITH EXISTING HVAC DUCTWORK.



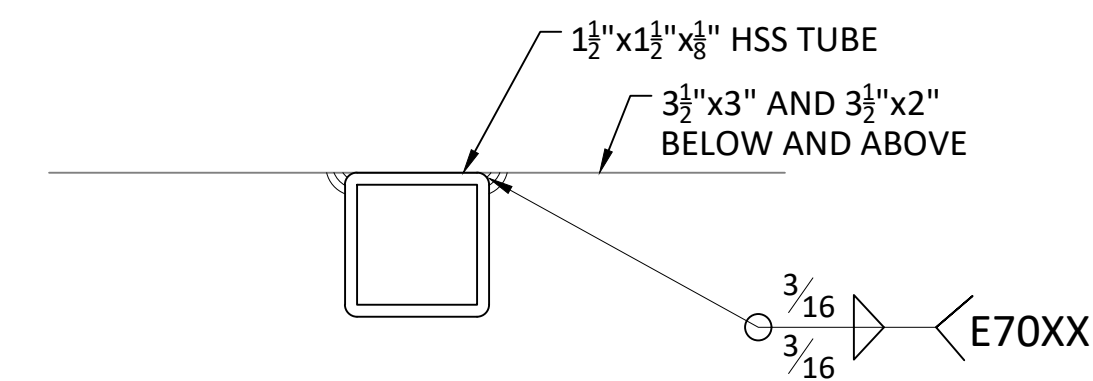
2 BASE PLATE ELEVATION
SCALE: 6" = 1'-0"



3 BEAM COLUMN CONNECTION
SCALE: 6" = 1'-0"

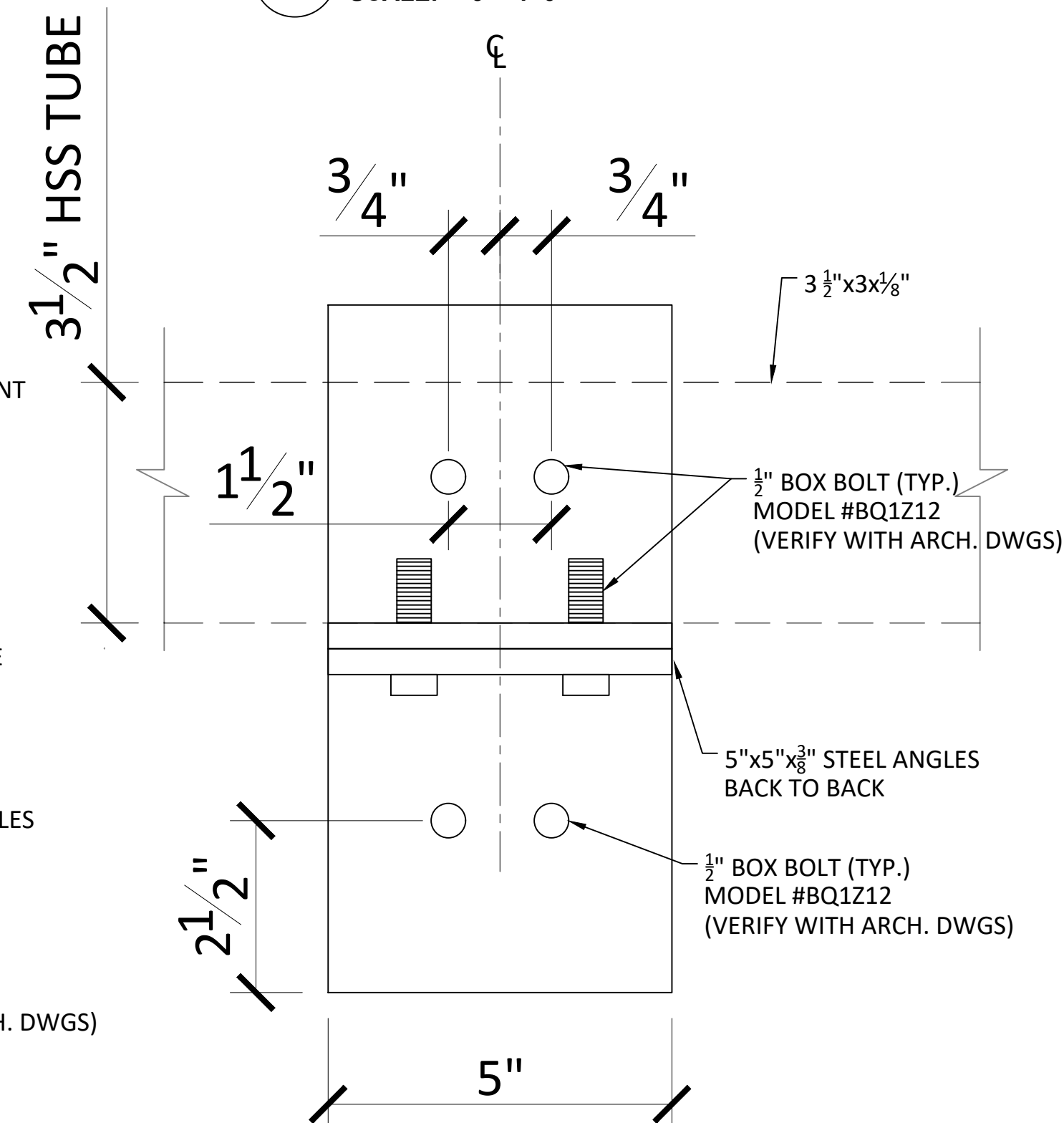


CONNECTION TO LED SCREEN



CONNECTION TO CROSS BEAM

4 LED MODULE CONNECTION
SCALE: 6" = 1'-0"



- NOTES:**
1. WELDED CONNECTION TO CONFORM TO SECTIONS J OF THE AISC STEEL MANUAL.
 2. ALL WELDING SHALL BE IN ACCORDANCE WITH AISC AND AWS CODE FOR WELDING IN BUILDING CONSTRUCTION, AWS D1.1, AND MUST BE PERFORMED BY CERTIFIED WELDER, ELECTRODES SHALL BE E70XX SERIES.
 3. ALL DIMENSIONS TO BE VERIFIED IN FIELD AND TO BE CHECKED WITH ENGINEER AND ARCHITECT DRAWINGS.

ALPHA DETAILERS INC.
STRUCTURAL STEEL DETAILING
18-20 130TH STREET
COLLEGE POINT NY 11356
TEL. (646) 423-0914

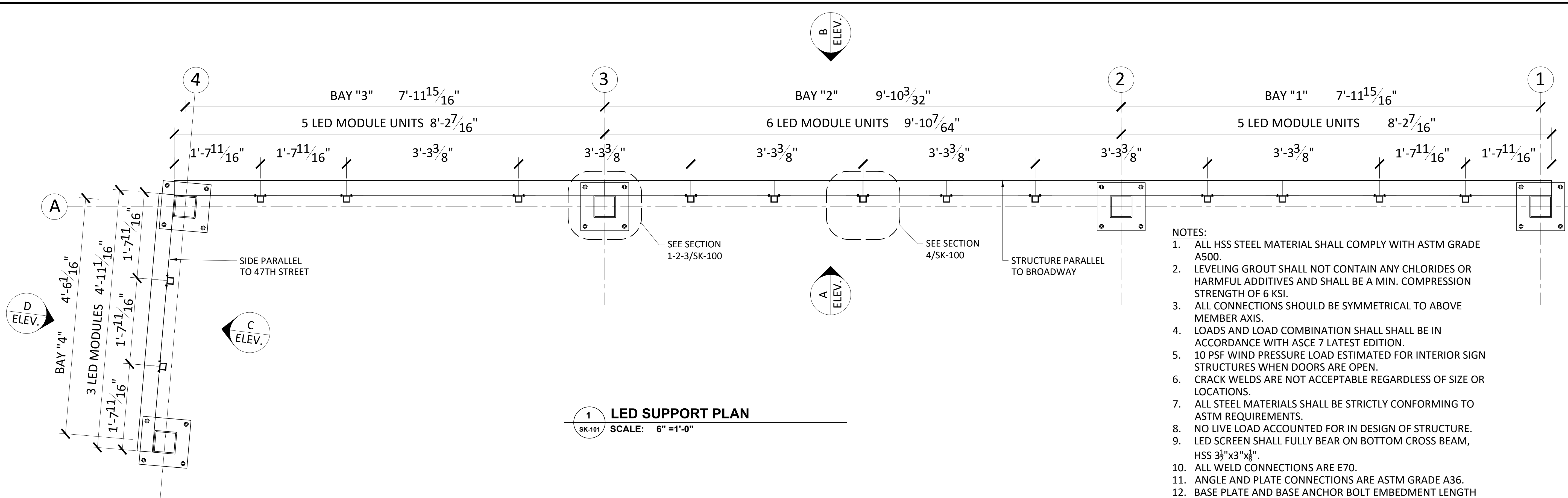
JOB LOCATION:
1578 BROADWAY
AKA 2 TIMES SQUARE
NEW YORK, 10036

NO.	DATE	REVISION
1	11/27/19	REV. 1

SHEET:
SECTION DETAILS

MATERIAL NOTES:
STRUCTURAL STEEL: ASTM A572 OR A992 GRADE 50 U.N.
PLATES AND CONNECTING MATERIAL: ASTM A36 PLATES, ANGLES, CHANNELS
TUBES: A500 GRADE B (46 KSI) U.N.
ANCHOR BOLTS: F-1554 (36 KSI)
WELD: E70XX-LOW HYDROGEN
BOLTS: A325-N BOLTS 3/4" Ø (U.N.)
HOLES: 1 3/16" Ø (U.N.)

SCALE:	AS SHOWN
DATE:	11/21/19
DRAWN BY:	MB
CHK BY:	
DWG No.:	SK-100
PAGE No.:	1 OF 3



1 LED SUPPORT PLAN
 SK-101 SCALE: 6" = 1'-0"

- NOTES:**
1. ALL HSS STEEL MATERIAL SHALL COMPLY WITH ASTM GRADE A500.
 2. LEVELING GROUT SHALL NOT CONTAIN ANY CHLORIDES OR HARMFUL ADDITIVES AND SHALL BE A MIN. COMPRESSION STRENGTH OF 6 KSI.
 3. ALL CONNECTIONS SHOULD BE SYMMETRICAL TO ABOVE MEMBER AXIS.
 4. LOADS AND LOAD COMBINATION SHALL BE IN ACCORDANCE WITH ASCE 7 LATEST EDITION.
 5. 10 PSF WIND PRESSURE LOAD ESTIMATED FOR INTERIOR SIGN STRUCTURES WHEN DOORS ARE OPEN.
 6. CRACK WELDS ARE NOT ACCEPTABLE REGARDLESS OF SIZE OR LOCATIONS.
 7. ALL STEEL MATERIALS SHALL BE STRICTLY CONFORMING TO ASTM REQUIREMENTS.
 8. NO LIVE LOAD ACCOUNTED FOR IN DESIGN OF STRUCTURE.
 9. LED SCREEN SHALL FULLY BEAR ON BOTTOM CROSS BEAM, HSS 3¹/₂"x3"x¹/₈".
 10. ALL WELD CONNECTIONS ARE E70.
 11. ANGLE AND PLATE CONNECTIONS ARE ASTM GRADE A36.
 12. BASE PLATE AND BASE ANCHOR BOLT EMBEDMENT LENGTH AND SIZE DESIGNED ON 12" DEEP SLAB PROVIDED BY BUILDING OWNER. GC TO VERIFY IN FIELD.

- NOTES:**
1. WELDED CONNECTION TO CONFORM TO SECTIONS J OF THE AISC STEEL MANUAL.
 2. ALL WELDING SHALL BE IN ACCORDANCE WITH AISC AND AWS CODE FOR WELDING IN BUILDING CONSTRUCTION, AWS D1.1, AND MUST BE PERFORMED BY CERTIFIED WELDER, ELECTRODES SHALL BE E70XX SERIES.
 3. ALL DIMENSIONS TO BE VERIFIED IN FIELD AND TO BE CHECKED WITH ENGINEER AND ARCHITECT DRAWINGS.

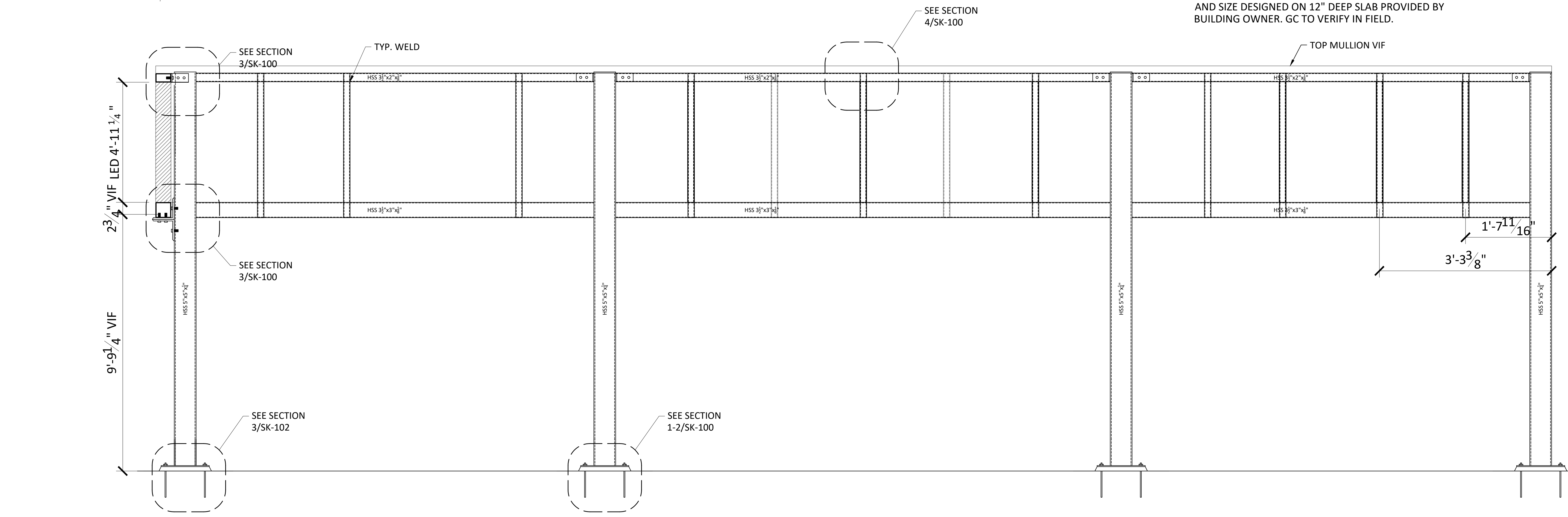
ALPHA DETAILERS INC.
 STRUCTURAL STEEL DETAILING
 18-20 130TH STREET
 COLLEGE POINT NY 11356
 TEL. (646) 423-0914

JOB LOCATION:
 1578 BROADWAY
 AKA 2 TIMES SQUARE
 NEW YORK, 10036

NO.	DATE	REVISION
1	11/27/19	REV. 1

SHEET:
PLAN AND ELEVATION DETAILS

SCALE:	AS SHOWN
DATE:	11/21/19
DRAWN BY:	MB
CHK BY:	
DWG No.:	SK-101
PAGE No.:	2 OF 3



2 LED ELEVATION "A"
 SK-101 SCALE: 6" = 1'-0"

MATERIAL NOTES:
 STRUCTURAL STEEL: ASTM A572 OR A992 GRADE 50 U.N.
 PLATES AND CONNECTING MATERIAL: ASTM A36 PLATES, ANGLES, CHANNELS
 TUBES: A500 GRADE B (46 KSI) U.N.
 ANCHOR BOLTS: F-1554 (36 KSI)
 WELD: E70XX-LOW HYDROGEN
 BOLTS: A325-N BOLTS 3/4" Ø (U.N.)
 HOLES: 1³/₁₆" Ø (U.N.)

