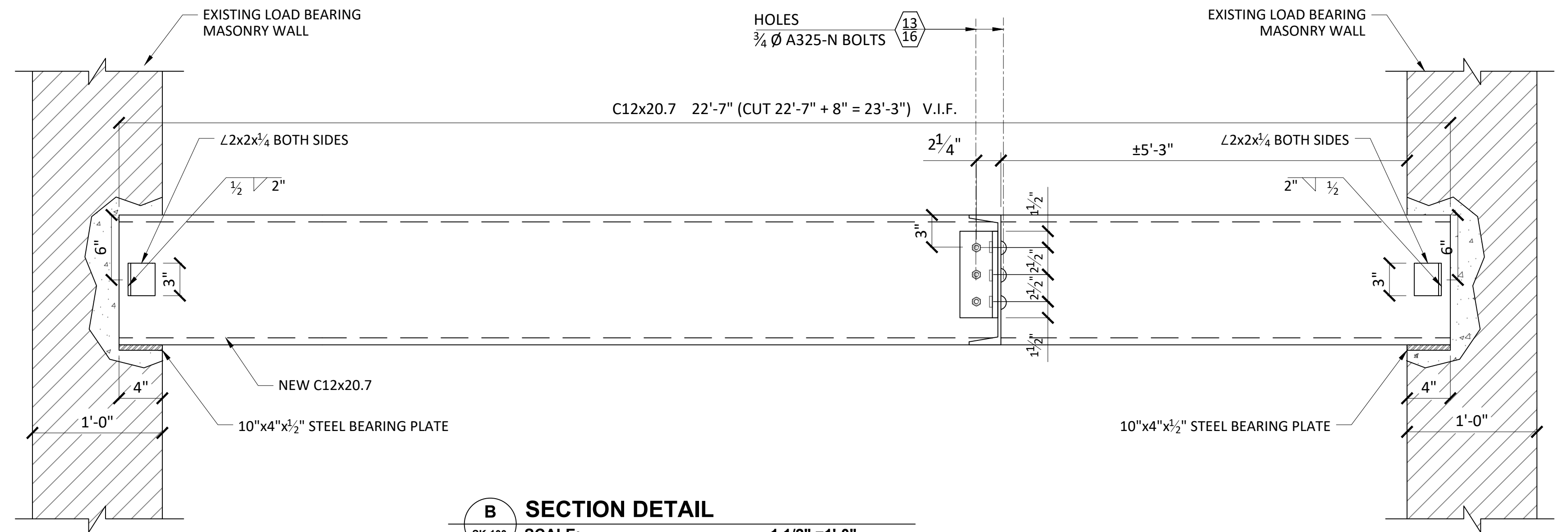
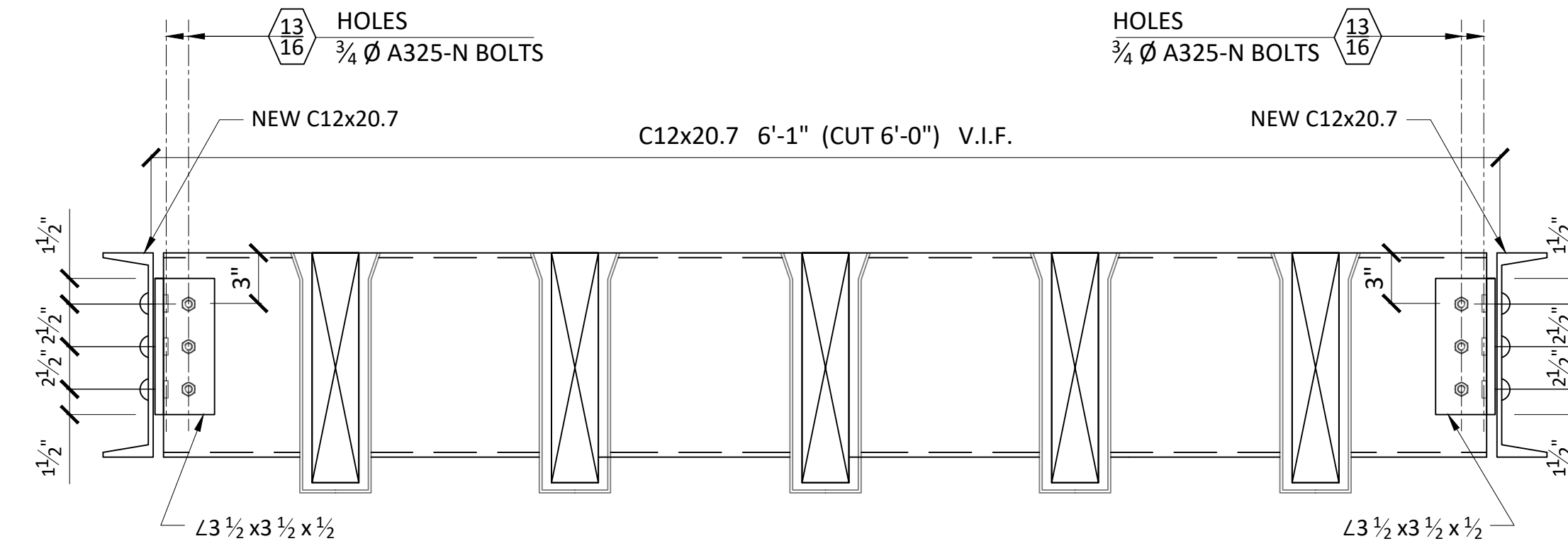


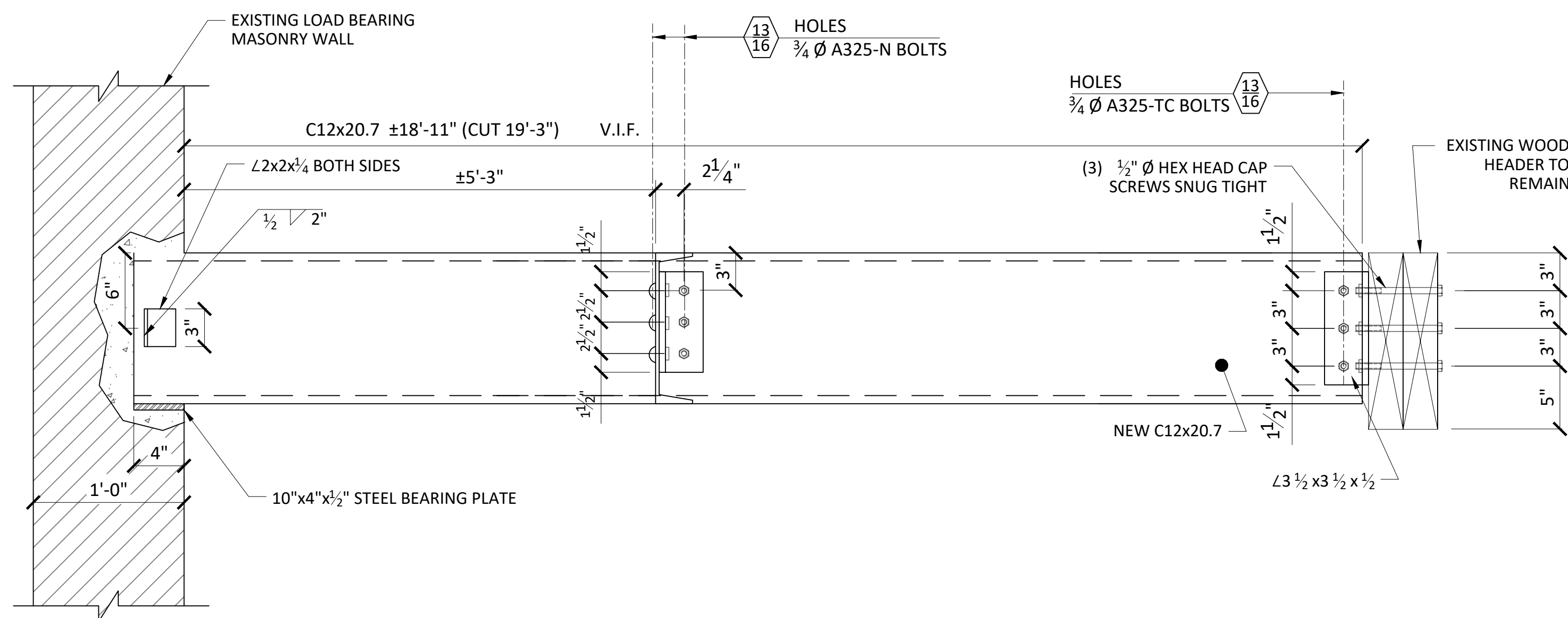
1 PROPOSED PLAN
 SK-100 SCALE: 1/4" = 1'-0"



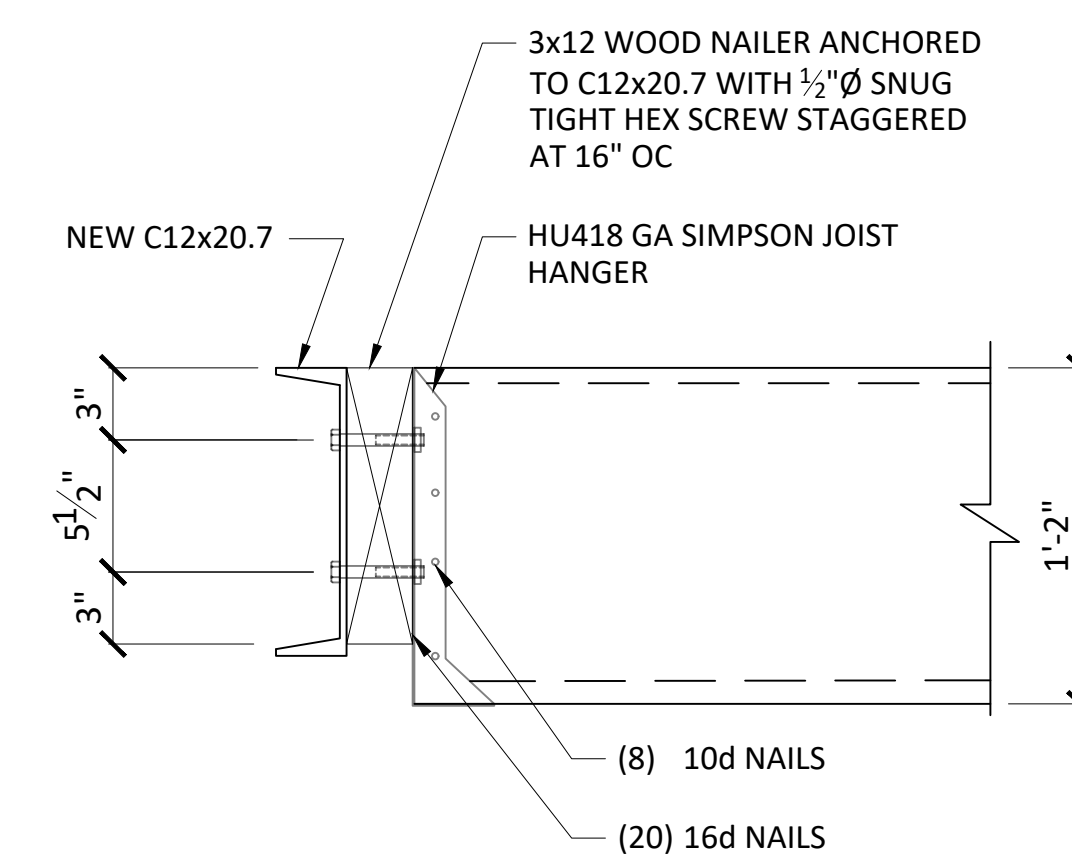
B SECTION DETAIL
 SK-100 SCALE: 1 1/2" = 1'-0"



C SECTION DETAIL
 SK-100 SCALE: 1 1/2" = 1'-0"



A SECTION DETAIL
 SK-100 SCALE: 1 1/2" = 1'-0"



D SECTION DETAIL (TYP.)
 SK-100 SCALE: 1 1/2" = 1'-0"

NOTES:
 MATERIAL: ASTM A572 OR A992 GRADE 50 U.N.
 MATERIAL: ASTM A36 PLATES, ANGLES, CHANNELS
 TUBES: A500 GRADE B U.N.
 WELD: E70XX
 BOLTS: A325-N BOLTS 3/4" Ø (U.N.)
 HOLES: 13/16" Ø (U.N.)

- NOTES:**
1. WELDED CONNECTION TO CONFORM TO SECTIONS J OF THE AISC STEEL MANUAL.
 2. ALL WELDING SHALL BE IN ACCORDANCE WITH AISC AND AWS CODE FOR WELDING IN BUILDING CONSTRUCTION, AWS D1.1, AND MUST BE PERFORMED BY CERTIFIED WELDER, ELECTRODES SHALL BE E70XX SERIES.
 3. ALL DIMENSIONS TO BE VERIFIED IN FIELD AND TO BE CHECKED WITH ARCHITECT DRAWINGS.

ALPHA DETAILERS INC.
 STRUCTURAL STEEL DETAILING
 18-20 130TH STREET
 COLLEGE POINT NY 11356
 TEL: (646) 423-0914

JOB LOCATION:
 419 WEST 150TH ST
 MANHATTAN, NY 10031

NO.	DATE	REVISION

SHEET:
PLAN AND SECTION DETAILS

SCALE: AS SHOWN
 DATE: 6/24/19
 DRAWN BY: MB
 CHK BY:

DWG No.: **SK-100**
 PAGE No.: 1 OF 1