

1 PLAN (TYP.)
 SCALE: 3/4" = 1'-0"

MATERIAL NOTES:
 STRUCTURAL STEEL: ASTM A572 OR A992 GRADE 50 U.N.
 PLATES AND CONNECTING MATERIAL: ASTM A36 PLATES, ANGLES, CHANNELS
 TUBES: A500 GRADE B (46 KSI) U.N.
 ANCHOR BOLTS: F-1554 (36 KSI)
 WELD: E70XX-LOW HYDROGEN
 BOLTS: A325-N BOLTS 3/4" Ø (U.N.)
 HOLES: 1/16" Ø (U.N.)

- NOTES:**
1. WELDED CONNECTION TO CONFORM TO SECTIONS J OF THE AISC STEEL MANUAL.
 2. ALL WELDING SHALL BE IN ACCORDANCE WITH AISC AND AWS CODE FOR WELDING IN BUILDING CONSTRUCTION, AWS D1.1, AND MUST BE PERFORMED BY CERTIFIED WELDER, ELECTRODES SHALL BE E70XX SERIES.
 3. ALL DIMENSIONS TO BE VERIFIED IN FIELD AND TO BE CHECKED WITH ENGINEER AND ARCHITECT DRAWINGS.

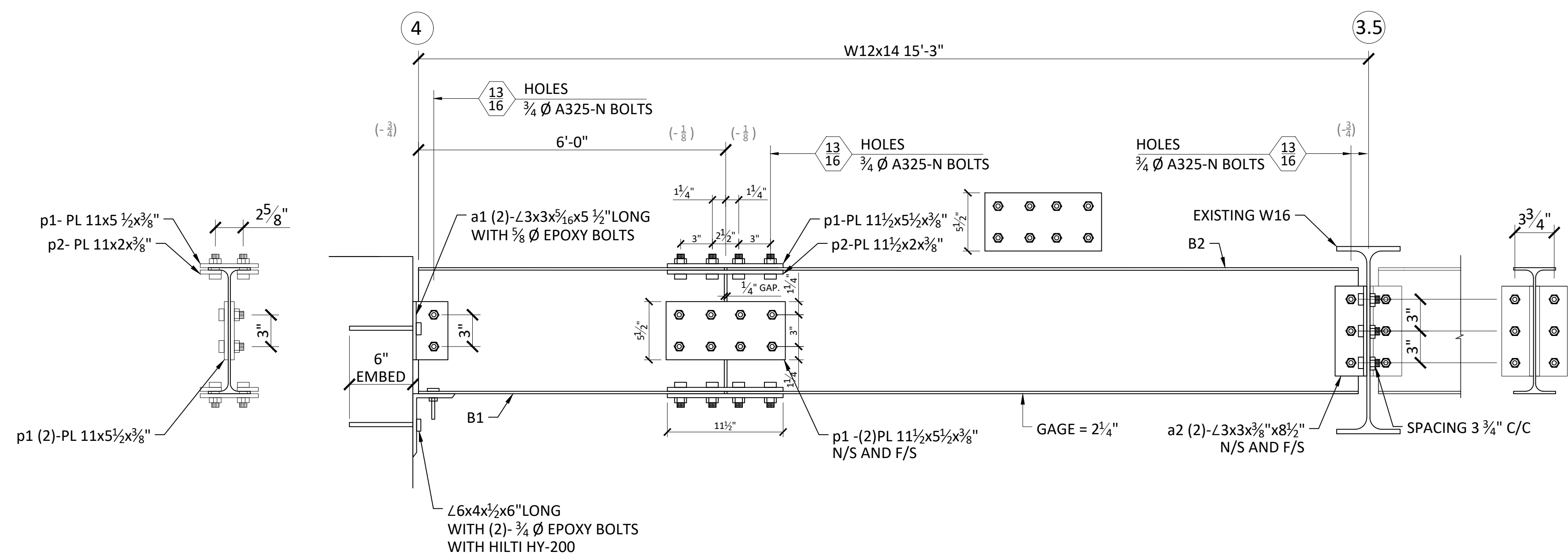
ALPHA DETAILERS INC.
 STRUCTURAL STEEL DETAILING
 18-20 130TH STREET
 COLLEGE POINT NY 11356
 TEL. (646) 423-0914

JOB LOCATION:
 FDNY EMS - STATION 20
 1400 PELHAM PW SO,
 BRONX, NY 10461

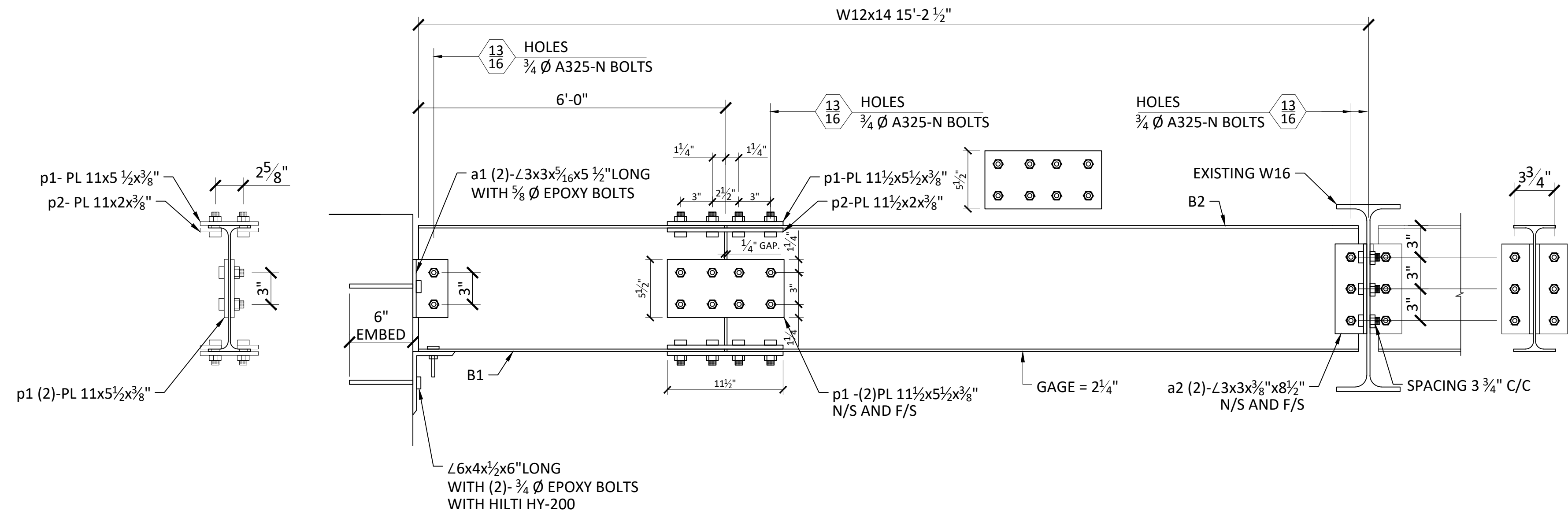
NO.	DATE	REVISION

SHEET:
PLAN AND ELEVATION DETAILS

SCALE:	AS SHOWN
DATE:	8/20/19
DRAWN BY:	MB
CHK BY:	
DWG No.:	SK-001
PAGE No.:	1 OF 10



1 BEAM ONE
 SK-100 SCALE: 1 1/2" = 1'-0"



2 BEAM TWO
 SK-100 SCALE: 1 1/2" = 1'-0"

BILL OF MATERIAL					
MARK	QTY	DESCRIPTION	LENGTH	WEIGHT	REMARKS
BEAM ONE					
CUT W BEAM					
B1	1	W12x14	5'-11"	84	A992
B2	1	W12x14	9'-1 1/2"	129	A992
a1	2	ANGLE 3x3x3/16x0'-5 1/2" LONG	5 1/2"	6	A36
a2	2	ANGLE 3x3x3/8x0'-8 1/2" LONG	8.5"	6	A36
p1	4	PLATE 11 1/2 x 5 1/2 x 1/2		8	A36
p2	4	PLATE 11 1/2 x 2 x 3/8		8	A36
BEAM TWO					
CUT W BEAM					
B1	1	W12x14	5'-11"	84	A992
B2	1	W12x14	9'-2"	132	A992
a1	2	ANGLE 3x3x3/16x0'-5 1/2" LONG	5 1/2"	6	A36
a2	2	ANGLE 3x3x3/8x0'-8 1/2" LONG	8.5"	6	A36
p1	4	PLATE 11 1/2 x 5 1/2 x 1/2		8	A36
p2	4	PLATE 11 1/2 x 2 x 3/8		8	A36

- NOTES:**
1. WELDED CONNECTION TO CONFORM TO SECTIONS J OF THE AISC STEEL MANUAL.
 2. ALL WELDING SHALL BE IN ACCORDANCE WITH AISC AND AWS CODE FOR WELDING IN BUILDING CONSTRUCTION, AWS D1.1, AND MUST BE PERFORMED BY CERTIFIED WELDER, ELECTRODES SHALL BE E70XX SERIES.
 3. ALL DIMENSIONS TO BE VERIFIED IN FIELD AND TO BE CHECKED WITH ENGINEER AND ARCHITECT DRAWINGS.

ALPHA DETAILERS INC.
 STRUCTURAL STEEL DETAILING
 18-20 130TH STREET
 COLLEGE POINT NY 11356
 TEL. (646) 423-0914

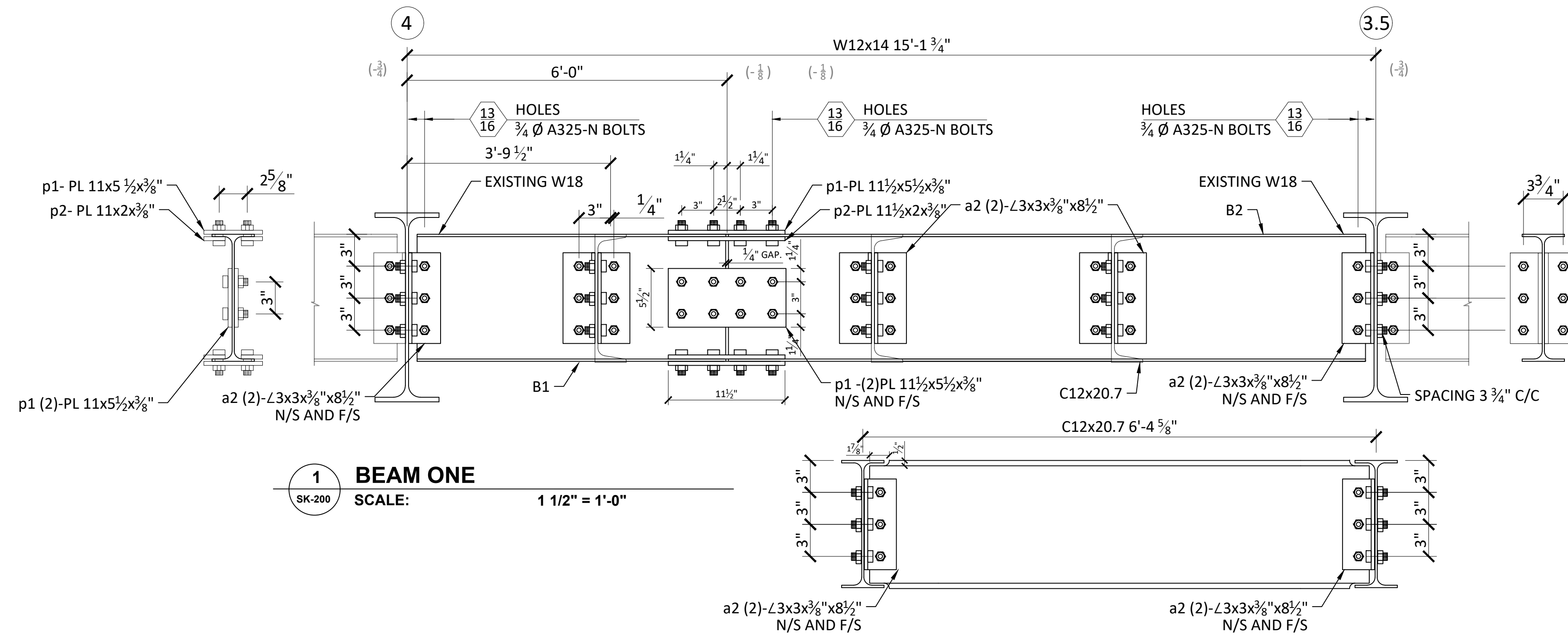
JOB LOCATION:
 FDNY EMS - STATION 20
 1400 PELHAM PW SO,
 BRONX, NY 10461

NO.	DATE	REVISION

SHEET:
BEAM DETAILS

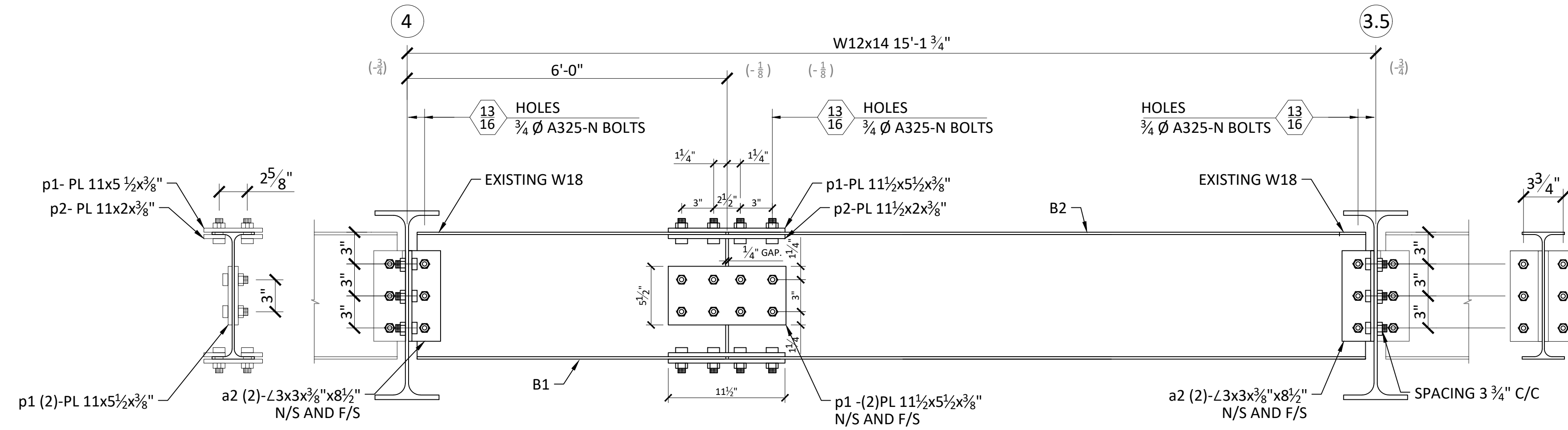
MATERIAL NOTES:
 STRUCTURAL STEEL: ASTM A572 OR A992 GRADE 50 U.N.
 PLATES AND CONNECTING MATERIAL: ASTM A36 PLATES, ANGLES, CHANNELS
 TUBES: A500 GRADE B (46 KSI) U.N.
 ANCHOR BOLTS: F-1554 (36 KSI)
 WELD: E70XX-LOW HYDROGEN
 BOLTS: A325-N BOLTS 3/4" Ø (U.N.)
 HOLES: 13/16" Ø (U.N.)

SCALE:	AS SHOWN
DATE:	8/20/19
DRAWN BY:	MB
CHK BY:	
DWG No.:	SK-100
PAGE No.:	1 OF 10

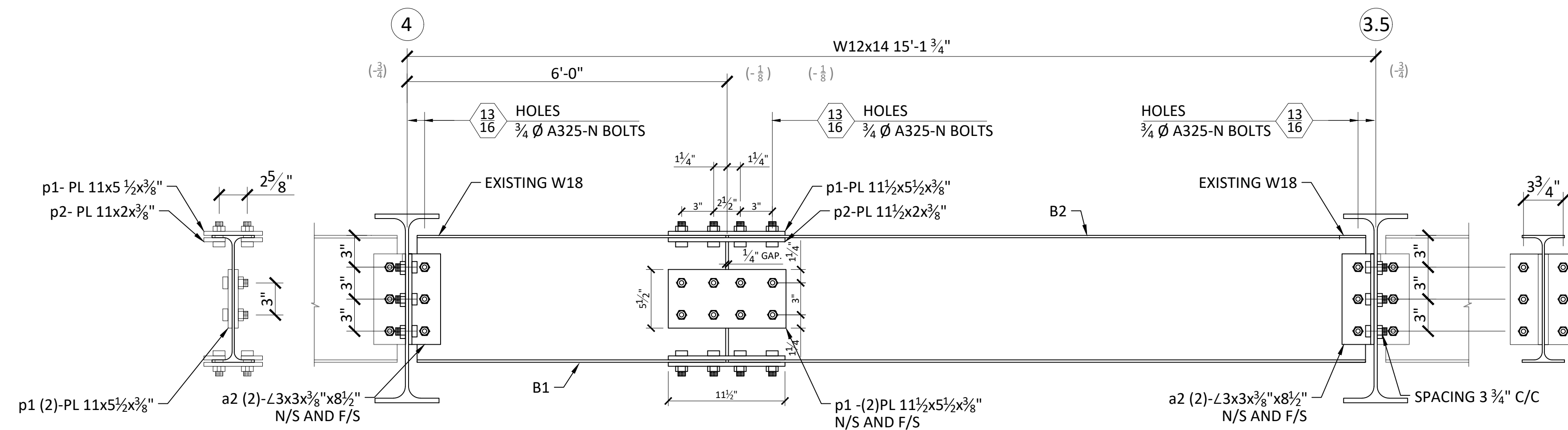


1 BEAM ONE
SCALE: 1 1/2" = 1'-0"

1 BEAM THREE
SCALE: 1 1/2" = 1'-0"



2 BEAM ONE
SCALE: 1 1/2" = 1'-0"



3 BEAM ONE
SCALE: 1 1/2" = 1'-0"

BILL OF MATERIAL					
MARK	QTY	DESCRIPTION	LENGTH	WEIGHT	REMARKS
BEAM ONE					
B1	3	W12x14	5'-11"	252	A992
B2	3	W12x14	9' 3/4"	382	A992
a1	12	ANGLE 3x3x3/8x0'-8 1/2" LONG	8.5"	6	A36
p1	12	PLATE 11 1/2 x 5 1/2 x 3/8		8	A36
p2	12	PLATE 11 1/2 x 2 x 3/8		8	A36
BEAM THREE					
CUT C-CHANNEL					
B3	3	C12X20.7	6'-4 5/8"	0	A36
a3	12	ANGLE 3x3x3/8x0'-8 1/2" LONG	8.5"	12	A36

NOTES:

1. WELDED CONNECTION TO CONFORM TO SECTIONS J OF THE AISC STEEL MANUAL.
2. ALL WELDING SHALL BE IN ACCORDANCE WITH AISC AND AWS CODE FOR WELDING IN BUILDING CONSTRUCTION, AWS D1.1, AND MUST BE PERFORMED BY CERTIFIED WELDER, ELECTRODES SHALL BE E70XX SERIES.
3. ALL DIMENSIONS TO BE VERIFIED IN FIELD AND TO BE CHECKED WITH ENGINEER AND ARCHITECT DRAWINGS.

ALPHA DETAILERS INC.
STRUCTURAL STEEL DETAILING
18-20 130TH STREET
COLLEGE POINT NY 11356
TEL: (646) 423-0914

JOB LOCATION:

FDNY EMS - STATION 20
1400 PELHAM PW SO,
BRONX, NY 10461

NO. DATE REVISION

NO.	DATE	REVISION

SHEET:

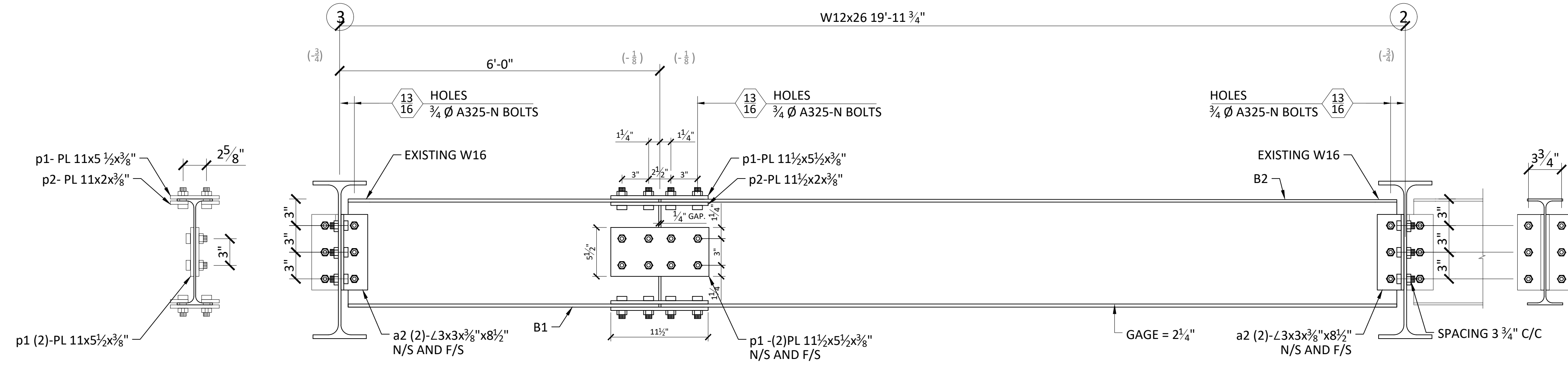
BEAM DETAILS

MATERIAL NOTES:

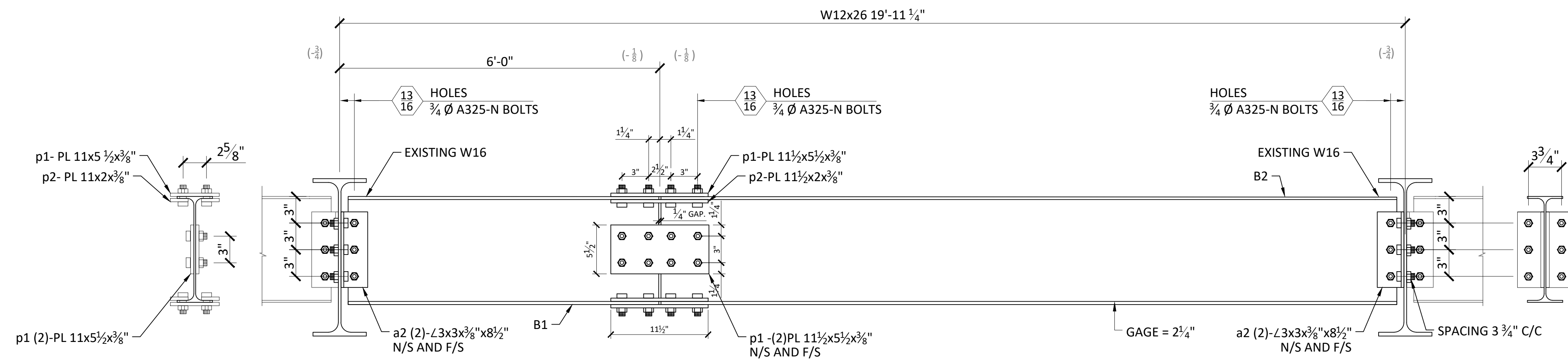
STRUCTURAL STEEL: ASTM A572 OR A992 GRADE 50 U.N.
PLATES AND CONNECTING MATERIAL: ASTM A36 PLATES, ANGLES, CHANNELS
TUBES: A500 GRADE B (46 KSI) U.N.
ANCHOR BOLTS: F-1554 (36 KSI)
WELD: E70XX-LOW HYDROGEN
BOLTS: A325-N BOLTS 3/4" Ø (U.N.)
HOLES: 13/16" Ø (U.N.)

SCALE:	AS SHOWN
DATE:	8/20/19
DRAWN BY:	MB
CHK BY:	
DWG No.:	

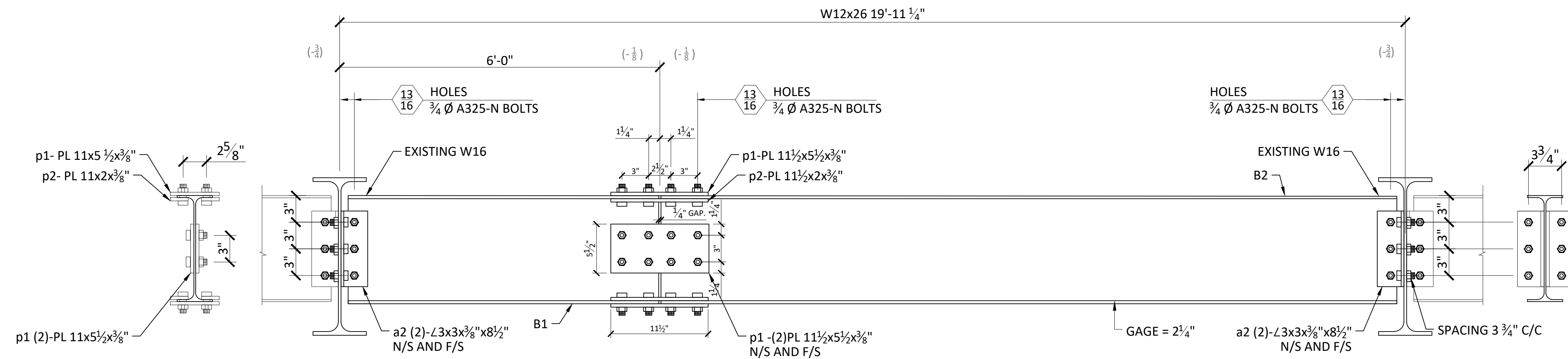
SK-200



1 BEAM ONE
 SK-300 SCALE: 1 1/2" = 1'-0"



2 BEAM TWO
 SK-300 SCALE: 1 1/2" = 1'-0"



2 BEAM THREE
 SK-300 SCALE: 1 1/2" = 1'-0"

BILL OF MATERIAL					
MARK	QTY	DESCRIPTION	LENGTH	WEIGHT	REMARKS
BEAM ONE					
CUT W BEAM					
B1	1	W12x26	5'-11"	182	A992
B2	1	W12x26	12'-10 3/4"	337	A992
a2	4	ANGLE 3x3x3/8x0'-8 1/2" LONG	8.5"	6	A36
p1	4	PLATE 11 1/2 x5 1/2x 3/8		8	A36
p2	4	PLATE 11 1/2x2x3/8		8	A36
BEAM TWO					
CUT W BEAM					
B1	2	W12x26	6'-11"	364	A992
B2	2	W12x26	12'-10 1/4"	674	A992
a2	8	ANGLE 3x3x3/8x0'-8 1/2" LONG	8.5"	6	A36
p1	8	PLATE 11 1/2 x5 1/2x 3/8		8	A36
p2	8	PLATE 11 1/2x2x3/8		8	A36

- NOTES:**
1. WELDED CONNECTION TO CONFORM TO SECTIONS J OF THE AISC STEEL MANUAL.
 2. ALL WELDING SHALL BE IN ACCORDANCE WITH AISC AND AWS CODE FOR WELDING IN BUILDING CONSTRUCTION, AWS D1.1, AND MUST BE PERFORMED BY CERTIFIED WELDER, ELECTRODES SHALL BE E70XX SERIES.
 3. ALL DIMENSIONS TO BE VERIFIED IN FIELD AND TO BE CHECKED WITH ENGINEER AND ARCHITECT DRAWINGS.

ALPHA DETAILERS INC.
 STRUCTURAL STEEL DETAILING
 18-20 130TH STREET
 COLLEGE POINT NY 11356
 TEL. (646) 423-0914

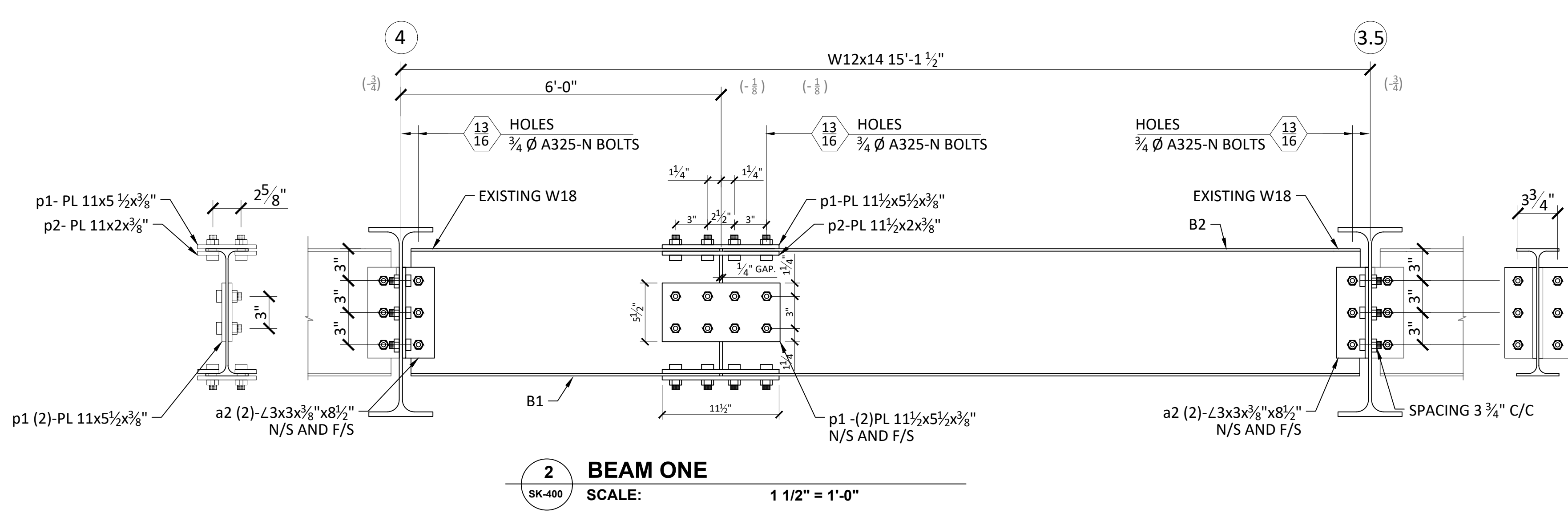
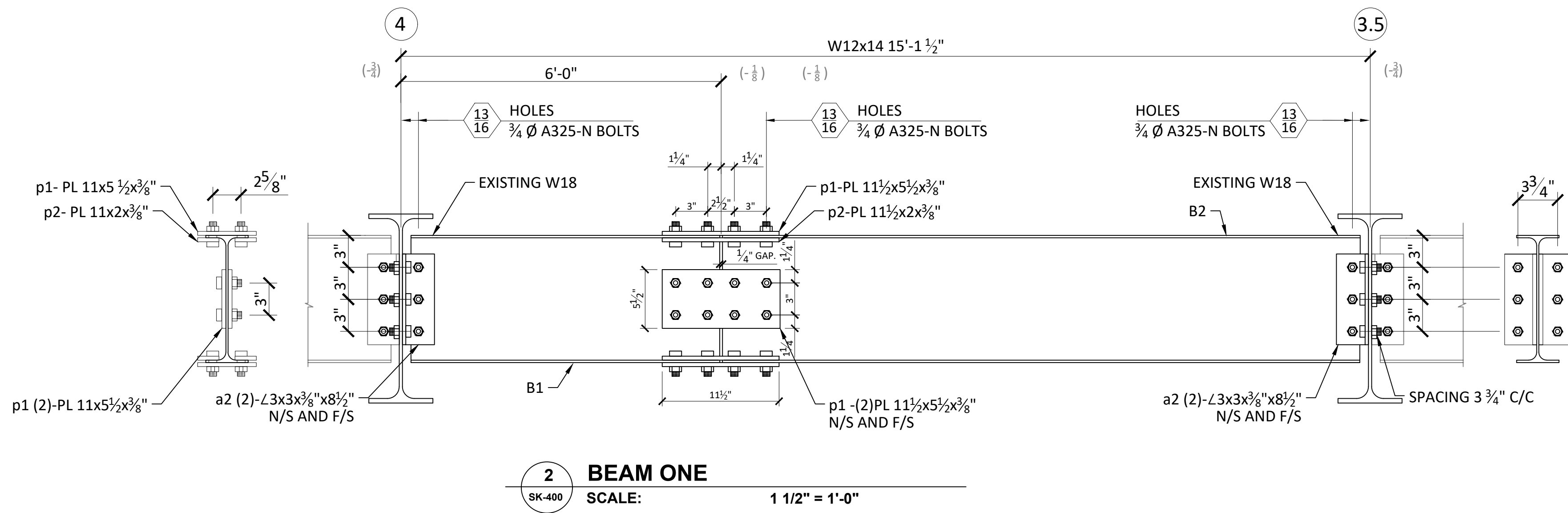
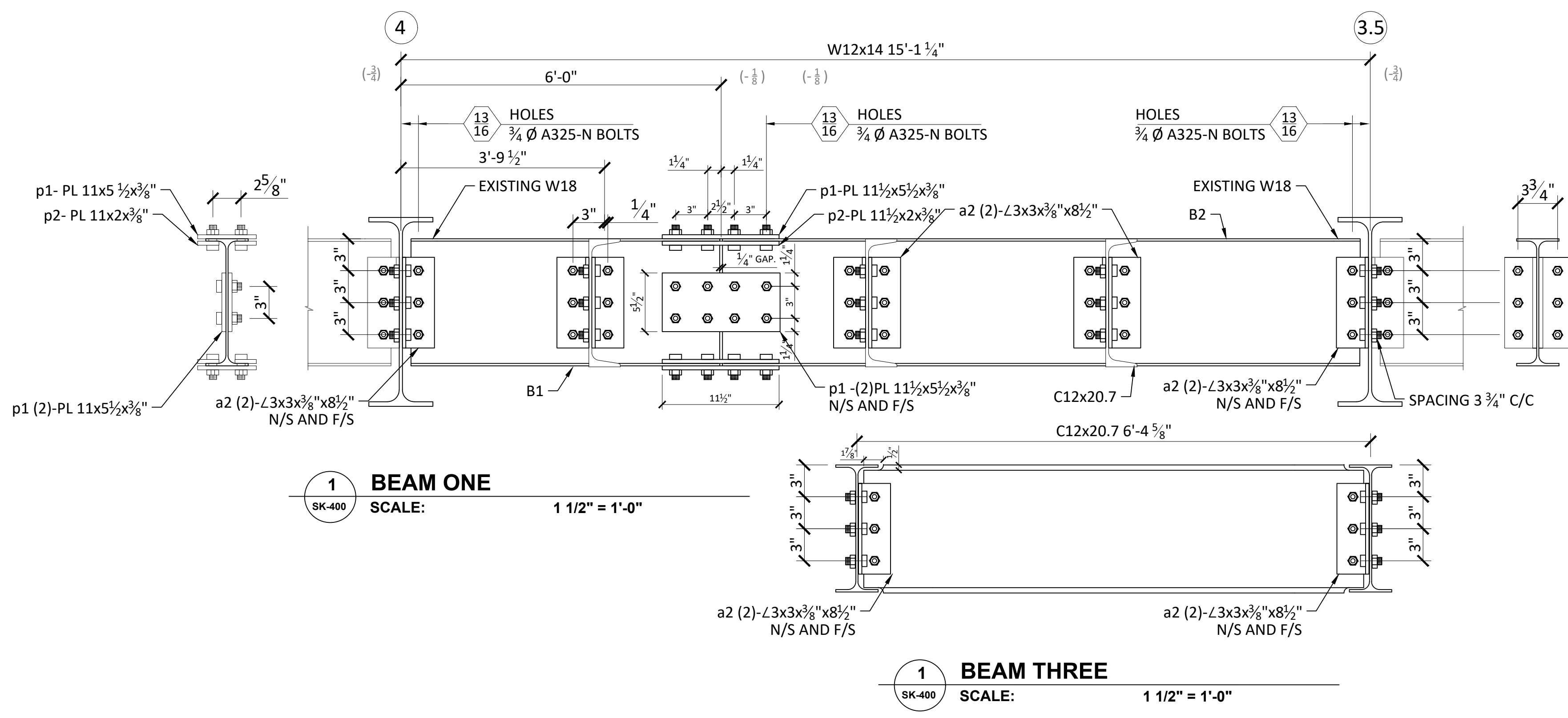
JOB LOCATION:
 FDNY EMS - STATION 20
 1400 PELHAM PW SO,
 BRONX, NY 10461

NO.	DATE	REVISION

SHEET:
BEAM DETAILS

MATERIAL NOTES:
 STRUCTURAL STEEL: ASTM A572 OR A992 GRADE 50 U.N.
 PLATES AND CONNECTING MATERIAL: ASTM A36 PLATES, ANGLES, CHANNELS
 TUBES: A500 GRADE B (46 KSI) U.N.
 ANCHOR BOLTS: F-1554 (36 KSI)
 WELD: E70XX-LOW HYDROGEN
 BOLTS: A325-N BOLTS 3/4" Ø (U.N.)
 HOLES: 1 3/16" Ø (U.N.)

SCALE:	AS SHOWN
DATE:	8/20/19
DRAWN BY:	MB
CHK BY:	
DWG No.:	
SK-300	
PAGE No.:	4 OF 10



BILL OF MATERIAL					
MARK	QTY	DESCRIPTION	LENGTH	WEIGHT	REMARKS
BEAM ONE					
CUT W BEAM					
B1	3	W12x14	5'-11"	252	A992
B2	3	W12x14	9'- 1/2"	383	A992
a2	12	ANGLE 3x3x3/8x0'-8 1/2" LONG	8.5"	6	A36
p1	12	PLATE 11 1/2 x5 1/2x 1/2		8	A36
p2	12	PLATE 11 1/2x2x3/8		8	A36
BEAM THREE					
CUT C-CHANNEL					
B3	3	C12X20.7	6'-4 5/8"	402	A36
a3	12	ANGLE 3x3x3/8x0'-8 1/2" LONG	8.5"	12	A36

- NOTES:**
1. WELDED CONNECTION TO CONFORM TO SECTIONS J OF THE AISC STEEL MANUAL.
 2. ALL WELDING SHALL BE IN ACCORDANCE WITH AISC AND AWS CODE FOR WELDING IN BUILDING CONSTRUCTION, AWS D1.1, AND MUST BE PERFORMED BY CERTIFIED WELDER, ELECTRODES SHALL BE E70XX SERIES.
 3. ALL DIMENSIONS TO BE VERIFIED IN FIELD AND TO BE CHECKED WITH ENGINEER AND ARCHITECT DRAWINGS.

ALPHA DETAILERS INC.
STRUCTURAL STEEL DETAILING
18-20 130TH STREET
COLLEGE POINT NY 11356
TEL. (646) 423-0914

JOB LOCATION:
FDNY EMS - STATION 20
1400 PELHAM PW SO,
BRONX, NY 10461

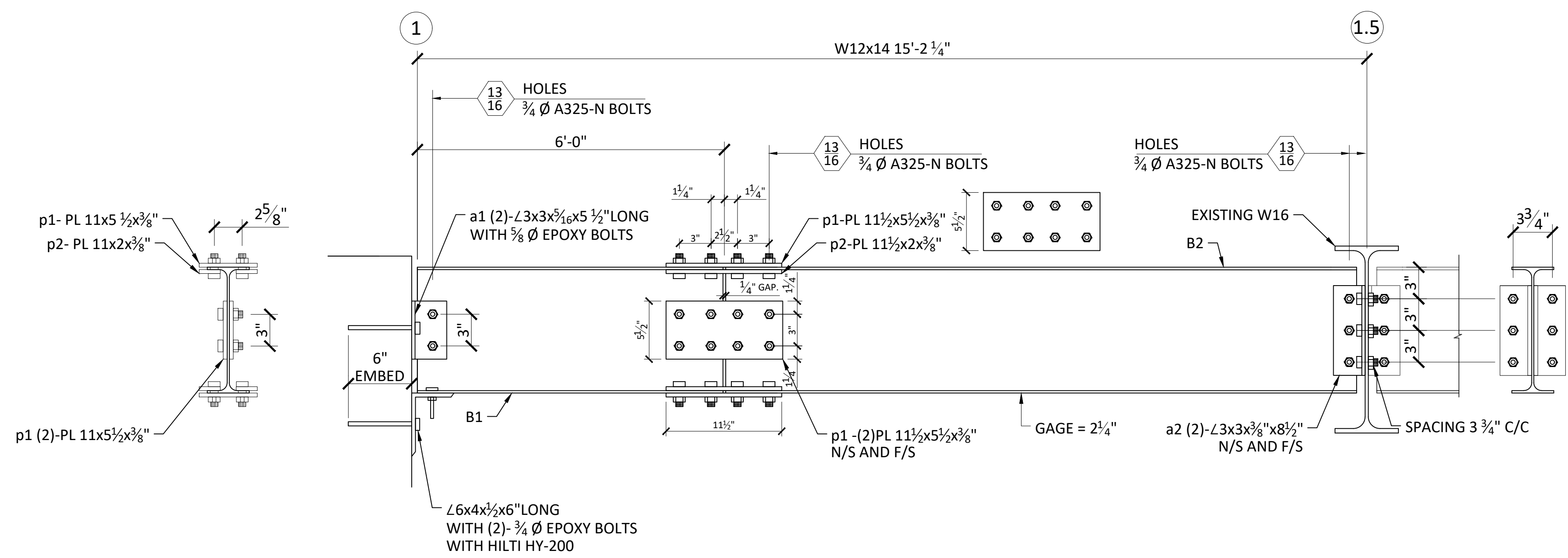
NO.	DATE	REVISION

SHEET:
BEAM DETAILS

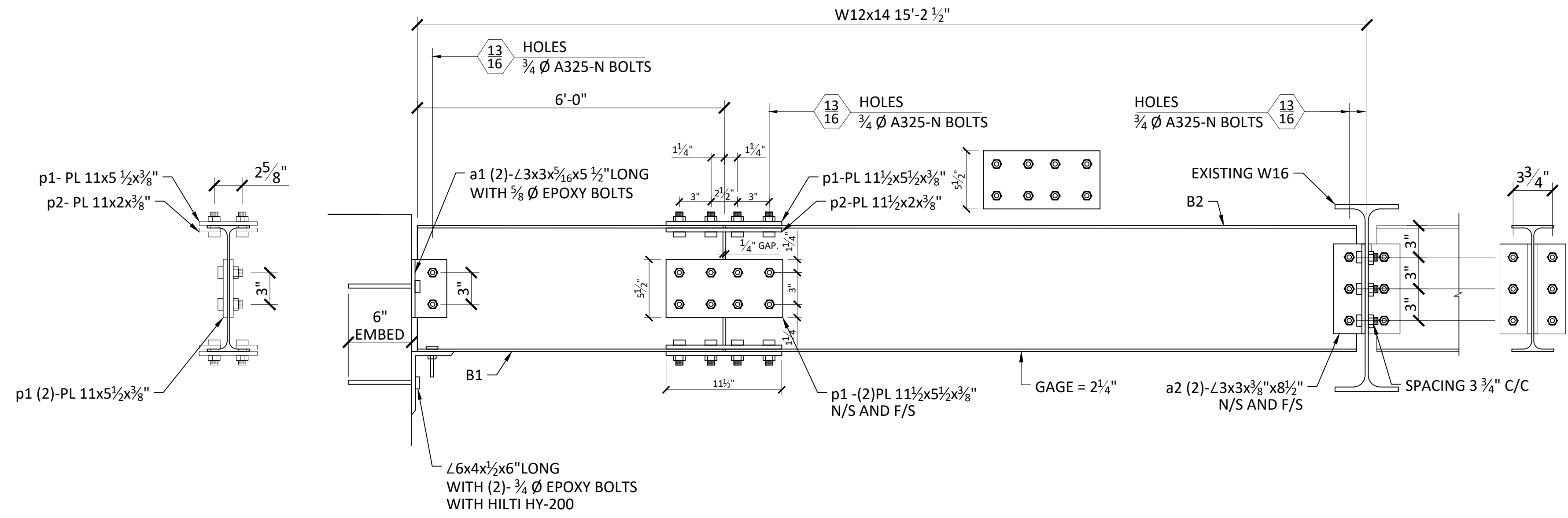
MATERIAL NOTES:
STRUCTURAL STEEL: ASTM A572 OR A992 GRADE 50 U.N.
PLATES AND CONNECTING MATERIAL: ASTM A36 PLATES, ANGLES, CHANNELS
TUBES: A500 GRADE B (46 KSI) U.N.
ANCHOR BOLTS: F-1554 (36 KSI)
WELD: E70XX-LOW HYDROGEN
BOLTS: A325-N BOLTS 3/4" Ø (U.N.)
HOLES: 1 3/16" Ø (U.N.)

SCALE:	AS SHOWN
DATE:	8/20/19
DRAWN BY:	MB
CHK BY:	
DWG No.:	SK-400
PAGE No.:	5 OF 10

BILL OF MATERIAL					
MARK	QTY	DESCRIPTION	LENGTH	WEIGHT	REMARKS
BEAM ONE					
CUT W BEAM					
B1	1	W12x14	5'-11"	84	A992
B2	1	W12x14	9'-1 1/2"	129	A992
a1	2	ANGLE 3x3x5/16x0'-5 1/2" LONG	5 1/2"	6	A36
a2	2	ANGLE 3x3x3/8x0'-8 1/2" LONG	8.5"	6	A36
p1	4	PLATE 11 1/2 x5 1/2x 1/2		8	A36
p2	4	PLATE 11 1/2x2x3/8		8	A36
BEAM TWO					
CUT W BEAM					
B1	1	W12x14	5'-11"	84	A992
B2	1	W12x14	9'-1 1/4"	127	A992
a1	2	ANGLE 3x3x5/16x0'-5 1/2" LONG	5 1/2"	6	A36
a2	2	ANGLE 3x3x3/8x0'-8 1/2" LONG	8.5"	6	A36
p1	4	PLATE 11 1/2 x5 1/2x 1/2		8	A36
p2	4	PLATE 11 1/2x2x3/8		8	A36



1 BEAM ONE
SCALE: 1 1/2" = 1'-0"



2 BEAM TWO
SCALE: 1 1/2" = 1'-0"

- NOTES:**
1. WELDED CONNECTION TO CONFORM TO SECTIONS J OF THE AISC STEEL MANUAL.
 2. ALL WELDING SHALL BE IN ACCORDANCE WITH AISC AND AWS CODE FOR WELDING IN BUILDING CONSTRUCTION, AWS D1.1, AND MUST BE PERFORMED BY CERTIFIED WELDER, ELECTRODES SHALL BE E70XX SERIES.
 3. ALL DIMENSIONS TO BE VERIFIED IN FIELD AND TO BE CHECKED WITH ENGINEER AND ARCHITECT DRAWINGS.

ALPHA DETAILERS INC.
STRUCTURAL STEEL DETAILING
18-20 130TH STREET
COLLEGE POINT NY 11356
TEL. (646) 423-0914

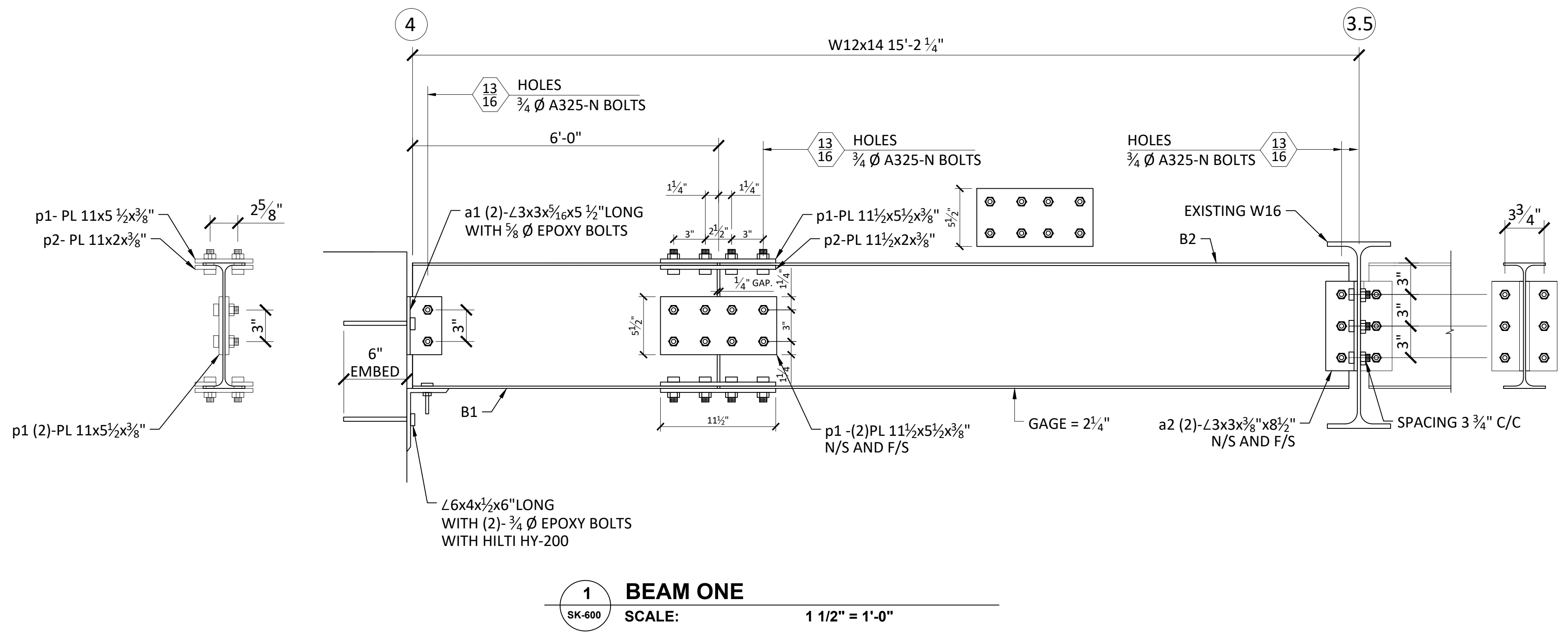
JOB LOCATION:
FDNY EMS - STATION 20
1400 PELHAM PW SO,
BRONX, NY 10461

NO.	DATE	REVISION

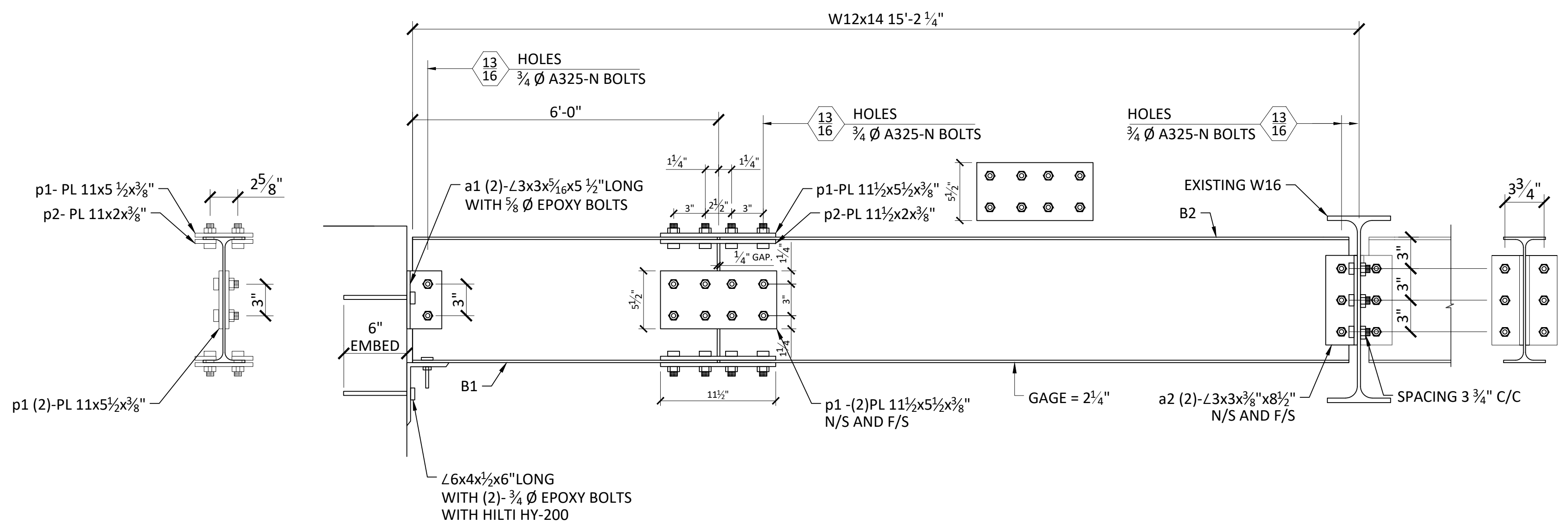
SHEET:
BEAM DETAILS

MATERIAL NOTES:
STRUCTURAL STEEL: ASTM A572 OR A992 GRADE 50 U.N.
PLATES AND CONNECTING MATERIAL: ASTM A36 PLATES, ANGLES, CHANNELS
TUBES: A500 GRADE B (46 KSI) U.N.
ANCHOR BOLTS: F-1554 (36 KSI)
WELD: E70XX-LOW HYDROGEN
BOLTS: A325-N BOLTS 3/4" Ø (U.N.)
HOLES: 1 3/16" Ø (U.N.)

SCALE:	AS SHOWN
DATE:	8/20/19
DRAWN BY:	MB
CHK BY:	
DWG No.:	SK-500
PAGE No.:	6 OF 10



1 BEAM ONE
SK-600 SCALE: 1 1/2" = 1'-0"



2 BEAM TWO
SK-600 SCALE: 1 1/2" = 1'-0"

BILL OF MATERIAL					
MARK	QTY	DESCRIPTION	LENGTH	WEIGHT	REMARKS
BEAM ONE					
B1	1	CUT W BEAM	5'-11"	84	A992
B2	1	W12x14	9'-1 1/2"	129	A992
a2	4	ANGLE 3x3x3/8x0'-8 1/2" LONG	8.5"	6	A36
p1	4	PLATE 11 1/2 x 5 1/2 x 1/2		8	A36
p2	4	PLATE 11 1/2 x 2 x 3/8		8	A36
BEAM TWO					
B1	1	CUT W BEAM	5'-11"	84	A992
B2	1	W12x14	9'-1 1/4"	127	A992
a2	4	ANGLE 3x3x3/8x0'-8 1/2" LONG	8.5"	6	A36
p1	4	PLATE 11 1/2 x 5 1/2 x 1/2		8	A36
p2	4	PLATE 11 1/2 x 2 x 3/8		8	A36

- NOTES:**
- WELDED CONNECTION TO CONFORM TO SECTIONS J OF THE AISC STEEL MANUAL.
 - ALL WELDING SHALL BE IN ACCORDANCE WITH AISC AND AWS CODE FOR WELDING IN BUILDING CONSTRUCTION, AWS D1.1, AND MUST BE PERFORMED BY CERTIFIED WELDER, ELECTRODES SHALL BE E70XX SERIES.
 - ALL DIMENSIONS TO BE VERIFIED IN FIELD AND TO BE CHECKED WITH ENGINEER AND ARCHITECT DRAWINGS.

ALPHA DETAILERS INC.
STRUCTURAL STEEL DETAILING
18-20 130TH STREET
COLLEGE POINT NY 11356
TEL. (646) 423-0914

JOB LOCATION:
FDNY EMS - STATION 20
1400 PELHAM PW SO,
BRONX, NY 10461

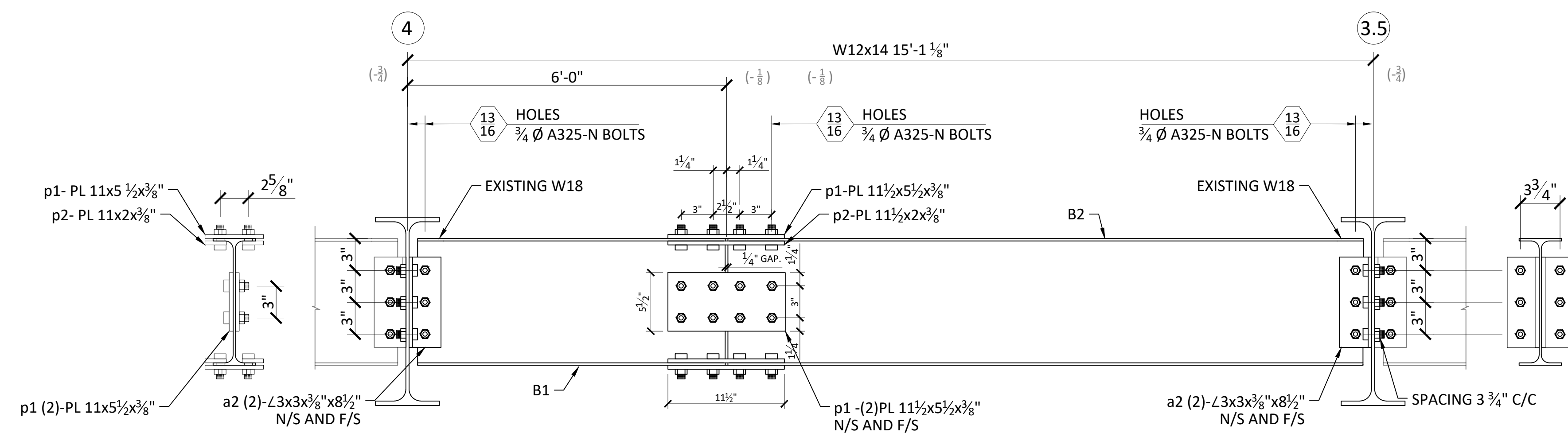
NO.	DATE	REVISION

SHEET:
BEAM DETAILS

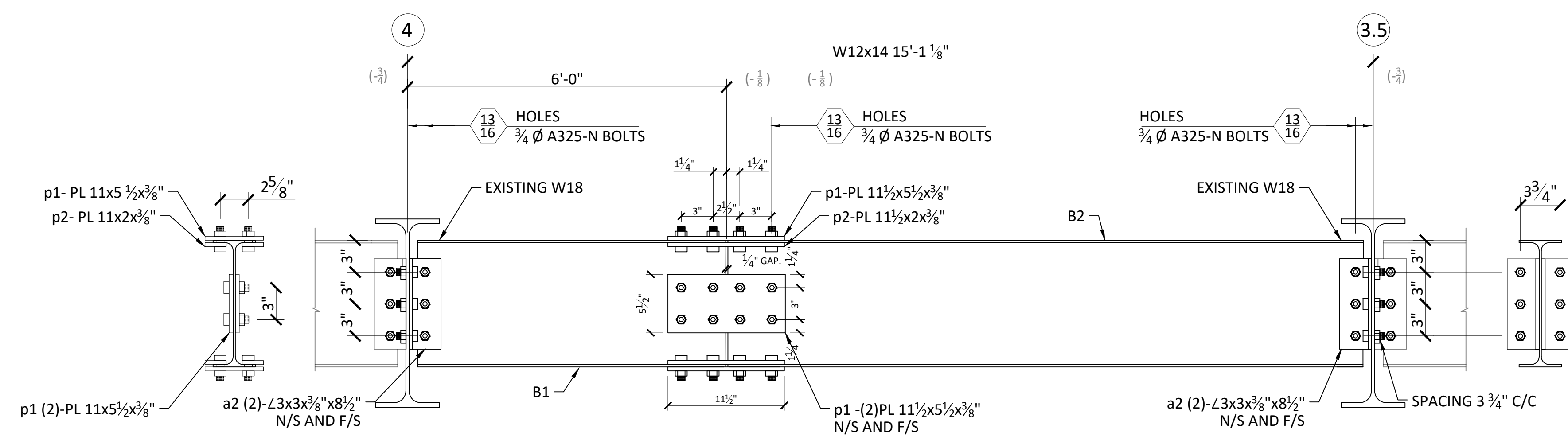
SCALE: AS SHOWN
DATE: 8/20/19
DRAWN BY: MB
CHK BY:
DWG No.: **SK-100**
PAGE No.: 7 OF 10

MATERIAL NOTES:

STRUCTURAL STEEL: ASTM A572 OR A992 GRADE 50 U.N.
PLATES AND CONNECTING MATERIAL: ASTM A36 PLATES, ANGLES, CHANNELS
TUBES: A500 GRADE B (46 KSI) U.N.
ANCHOR BOLTS: F-1554 (36 KSI)
WELD: E70XX-LOW HYDROGEN
BOLTS: A325-N BOLTS 3/4" Ø (U.N.)
HOLES: 13/16" Ø (U.N.)



1 BEAM ONE
 SK-700 SCALE: 1 1/2" = 1'-0"



2 BEAM TWO
 SK-700 SCALE: 1 1/2" = 1'-0"

BILL OF MATERIAL					
MARK	QTY	DESCRIPTION	LENGTH	WEIGHT	REMARKS
BEAM ONE		CUT W BEAM			
B1	2	W12x14	5'-11"	168	A992
B2	2	W12x14	9'-1/8"	255	A992
a2	8	ANGLE 3x3x3/8x0'-8 1/2" LONG	8.5"	12	A36
p1	8	PLATE 11 1/2 x 5 1/2 x 1/2		16	A36
p2	8	PLATE 11 1/2 x 2 x 3/8		16	A36

- NOTES:**
1. WELDED CONNECTION TO CONFORM TO SECTIONS J OF THE AISC STEEL MANUAL.
 2. ALL WELDING SHALL BE IN ACCORDANCE WITH AISC AND AWS CODE FOR WELDING IN BUILDING CONSTRUCTION, AWS D1.1, AND MUST BE PERFORMED BY CERTIFIED WELDER, ELECTRODES SHALL BE E70XX SERIES.
 3. ALL DIMENSIONS TO BE VERIFIED IN FIELD AND TO BE CHECKED WITH ENGINEER AND ARCHITECT DRAWINGS.

ALPHA DETAILERS INC.
 STRUCTURAL STEEL DETAILING
 18-20 130TH STREET
 COLLEGE POINT NY 11356
 TEL. (646) 423-0914

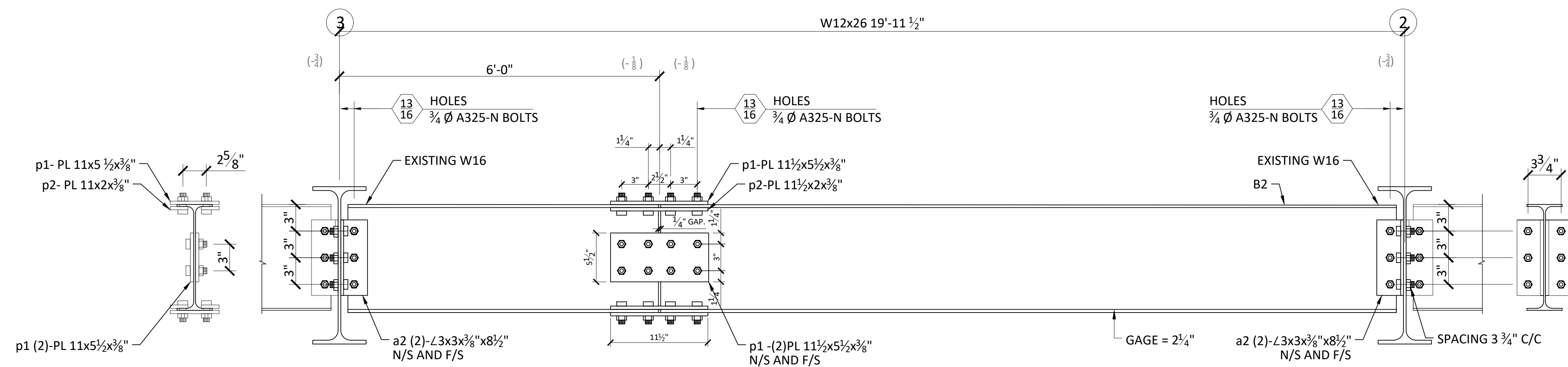
JOB LOCATION:
 FDNY EMS - STATION 20
 1400 PELHAM PW SO,
 BRONX, NY 10461

NO.	DATE	REVISION

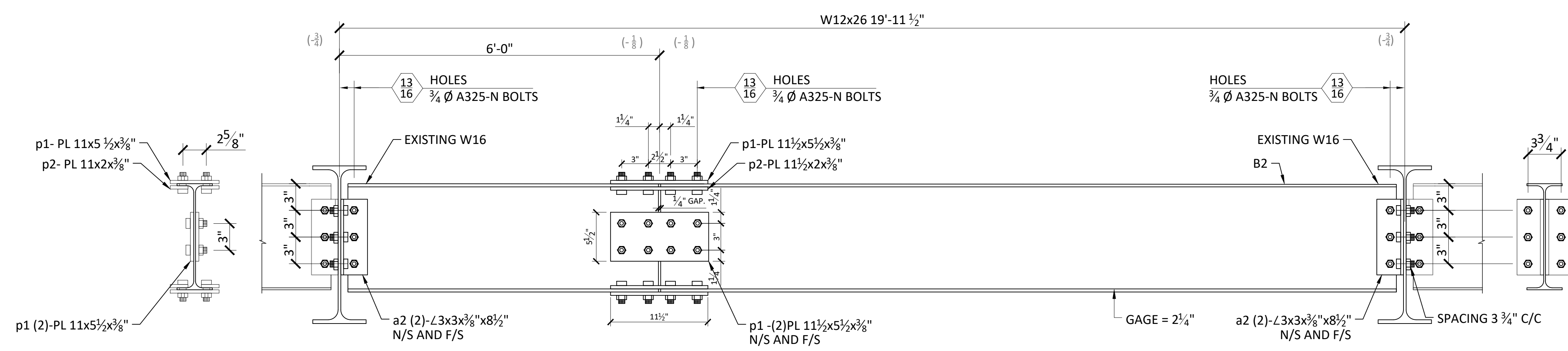
SHEET:
BEAM DETAILS

MATERIAL NOTES:
 STRUCTURAL STEEL: ASTM A572 OR A992 GRADE 50 U.N.
 PLATES AND CONNECTING MATERIAL: ASTM A36 PLATES, ANGLES, CHANNELS
 TUBES: A500 GRADE B (46 KSI) U.N.
 ANCHOR BOLTS: F-1554 (36 KSI)
 WELD: E70XX-LOW HYDROGEN
 BOLTS: A325-N BOLTS 3/4" Ø (U.N.)
 HOLES: 1 3/16" Ø (U.N.)

SCALE:	AS SHOWN
DATE:	8/20/19
DRAWN BY:	MB
CHK BY:	
DWG No.:	SK-700
PAGE No.:	8 OF 10



1 BEAM ONE
 SCALE: 1 1/2" = 1'-0"



2 BEAM TWO
 SCALE: 1 1/2" = 1'-0"

BILL OF MATERIAL					
MARK	QTY	DESCRIPTION	LENGTH	WEIGHT	REMARKS
BEAM ONE					
		CUT W BEAM			
B1	1	W12x26	5'-11"	182	A992
B2	1	W12x26	12'-9 1/2"	337	A992
a2	4	ANGLE 3x3x3/8x0'-8 1/2" LONG	8.5"	6	A36
p1	4	PLATE 11 1/2 x 5 1/2 x 3/8		8	A36
p2	4	PLATE 11 1/2 x 2 x 3/8		8	A36
BEAM TWO					
		CUT W BEAM			
B1	1	W12x26	6'-11"	364	A992
B2	1	W12x26	12'-10 1/2"	675	A992
a2	4	ANGLE 3x3x3/8x0'-8 1/2" LONG	8.5"	6	A36
p1	4	PLATE 11 1/2 x 5 1/2 x 3/8		8	A36
p2	4	PLATE 11 1/2 x 2 x 3/8		8	A36

- NOTES:**
1. WELDED CONNECTION TO CONFORM TO SECTIONS J OF THE AISC STEEL MANUAL.
 2. ALL WELDING SHALL BE IN ACCORDANCE WITH AISC AND AWS CODE FOR WELDING IN BUILDING CONSTRUCTION, AWS D1.1, AND MUST BE PERFORMED BY CERTIFIED WELDER, ELECTRODES SHALL BE E70XX SERIES.
 3. ALL DIMENSIONS TO BE VERIFIED IN FIELD AND TO BE CHECKED WITH ENGINEER AND ARCHITECT DRAWINGS.

ALPHA DETAILERS INC.
 STRUCTURAL STEEL DETAILING
 18-20 130TH STREET
 COLLEGE POINT NY 11356
 TEL. (646) 423-0914

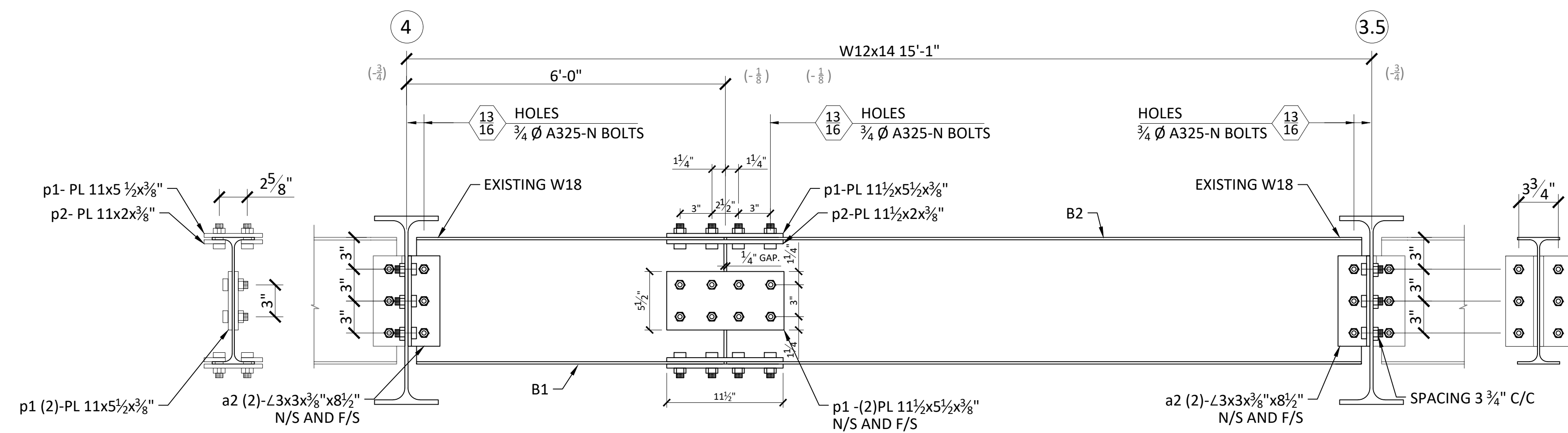
JOB LOCATION:
 FDNY EMS - STATION 20
 1400 PELHAM PW SO,
 BRONX, NY 10461

NO.	DATE	REVISION

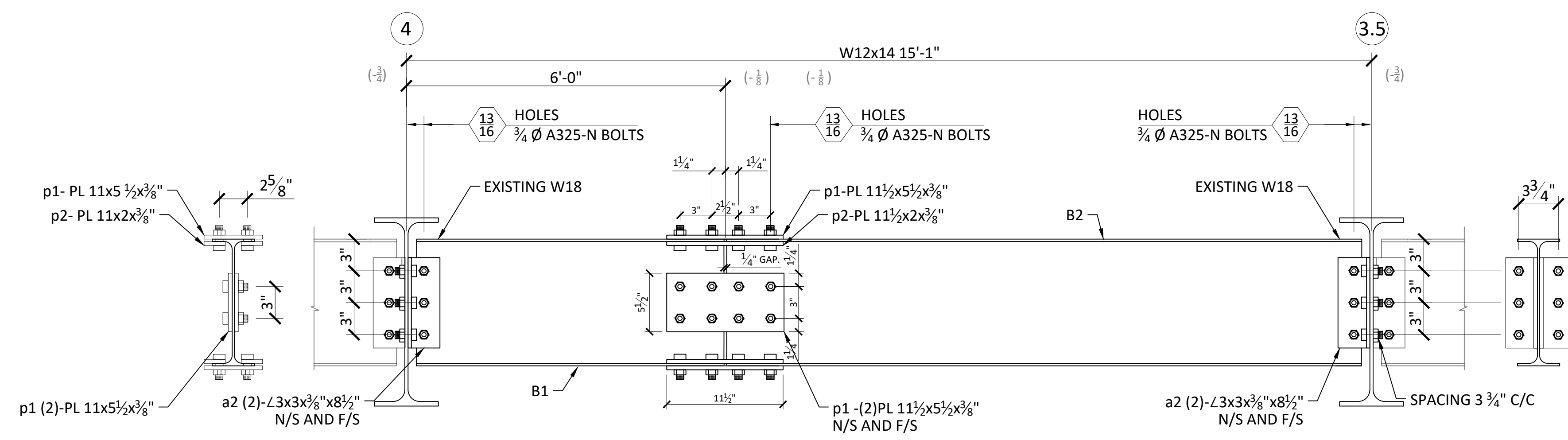
SHEET:
BEAM DETAILS

MATERIAL NOTES:
 STRUCTURAL STEEL: ASTM A572 OR A992 GRADE 50 U.N.
 PLATES AND CONNECTING MATERIAL: ASTM A36 PLATES, ANGLES, CHANNELS
 TUBES: A500 GRADE B (46 KSI) U.N.
 ANCHOR BOLTS: F-1554 (36 KSI)
 WELD: E70XX-LOW HYDROGEN
 BOLTS: A325-N BOLTS 3/4" Ø (U.N.)
 HOLES: 13/16" Ø (U.N.)

SCALE:	AS SHOWN
DATE:	8/20/19
DRAWN BY:	MB
CHK BY:	
DWG No.:	SK-800
PAGE No.:	9 OF 10



1 BEAM ONE
 SK-900 SCALE: 1 1/2" = 1'-0"



2 BEAM TWO
 SK-900 SCALE: 1 1/2" = 1'-0"

BILL OF MATERIAL					
MARK	QTY	DESCRIPTION	LENGTH	WEIGHT	REMARKS
BEAM ONE					
B1	2	W12x14	5'-11"	168	A992
B2	2	W12x14	9'-0"	254	A992
a2	8	ANGLE 3x3x3/8x0'-8 1/2" LONG	8.5"	12	A36
p1	8	PLATE 11 1/2x5 1/2x3/8		16	A36
p2	8	PLATE 11 1/2x2x3/8		16	A36

- NOTES:**
1. WELDED CONNECTION TO CONFORM TO SECTIONS J OF THE AISC STEEL MANUAL.
 2. ALL WELDING SHALL BE IN ACCORDANCE WITH AISC AND AWS CODE FOR WELDING IN BUILDING CONSTRUCTION, AWS D1.1, AND MUST BE PERFORMED BY CERTIFIED WELDER, ELECTRODES SHALL BE E70XX SERIES.
 3. ALL DIMENSIONS TO BE VERIFIED IN FIELD AND TO BE CHECKED WITH ENGINEER AND ARCHITECT DRAWINGS.

ALPHA DETAILERS INC.
 STRUCTURAL STEEL DETAILING
 18-20 130TH STREET
 COLLEGE POINT NY 11356
 TEL. (646) 423-0914

JOB LOCATION:
 FDNY EMS - STATION 20
 1400 PELHAM PW SO,
 BRONX, NY 10461

NO.	DATE	REVISION

SHEET:
BEAM DETAILS

MATERIAL NOTES:
 STRUCTURAL STEEL: ASTM A572 OR A992 GRADE 50 U.N.
 PLATES AND CONNECTING MATERIAL: ASTM A36 PLATES, ANGLES, CHANNELS
 TUBES: A500 GRADE B (46 KSI) U.N.
 ANCHOR BOLTS: F-1554 (36 KSI)
 WELD: E70XX-LOW HYDROGEN
 BOLTS: A325-N BOLTS 3/4" Ø (U.N.)
 HOLES: 1 3/16" Ø (U.N.)

SCALE:	AS SHOWN
DATE:	8/20/19
DRAWN BY:	MB
CHK BY:	
DWG No.:	SK-900
PAGE No.:	10 OF 10