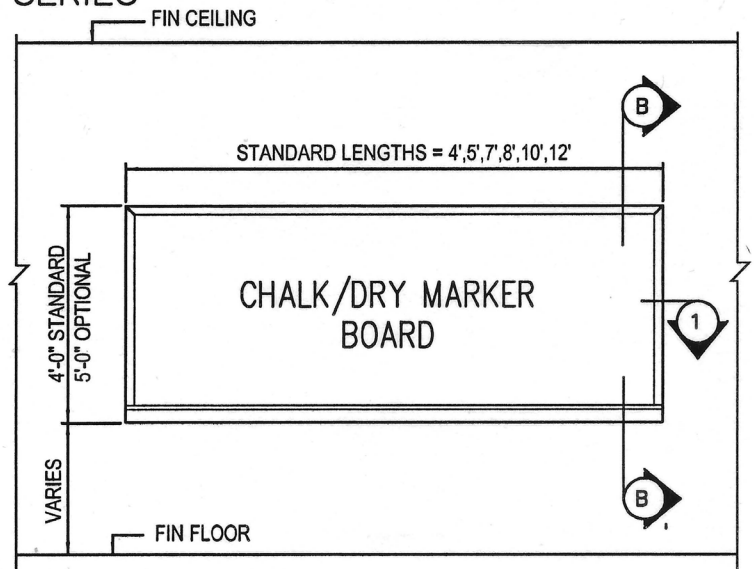
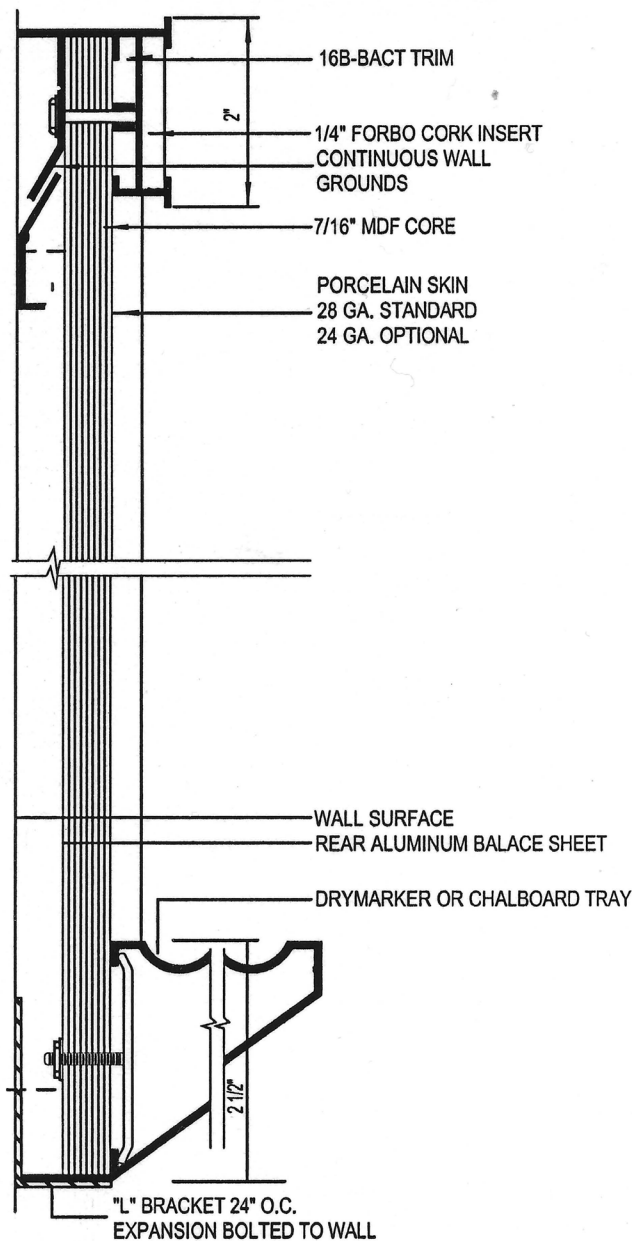


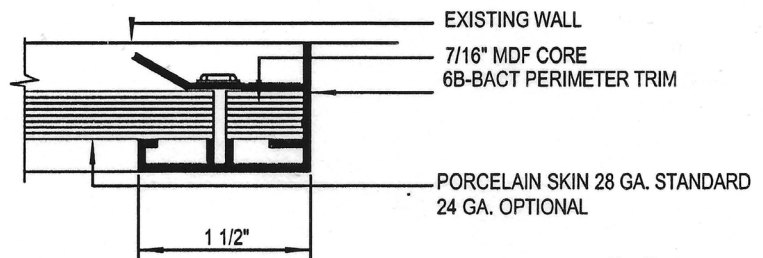
PREFABRICATED REDDI FRAME "BIG APPLE CLIP-TITE SERIES"

PORCELAIN BOARD



ELEVATION

NOT TO SCALE



DETAIL

NOT TO SCALE

Our unique prefabricated REDDI FRAME "Big Apple - Clip Tight Series", (BACT) **complies with New York City Department of Education and School Construction Authority Specifications.**

It represents the **benchmark in prefabricated boards.** By incorporating Box Trim, and utilizing threaded clips, the core, perimeter trim, tray and mounting mechanism are firmly secured and become one integral unit.

The writing surface is [Polyvision E3](#) material (28-gauge is standard up to 48" and 24-gauge is used for boards 48" to 60"). Both are backed by sm identical **lifetime warranty.** They offer excellent image clarity, are easy to clean, and are capable of supporting magnets. The writing surface is considered **"Graffiti Resistant."**

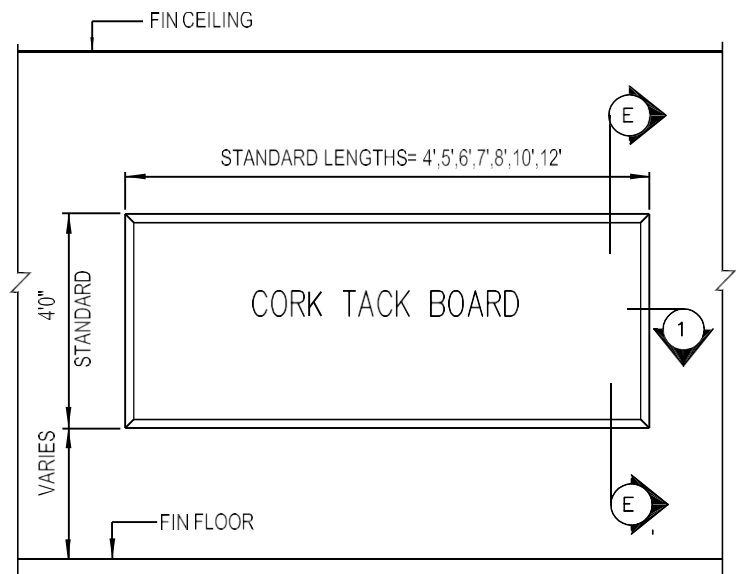
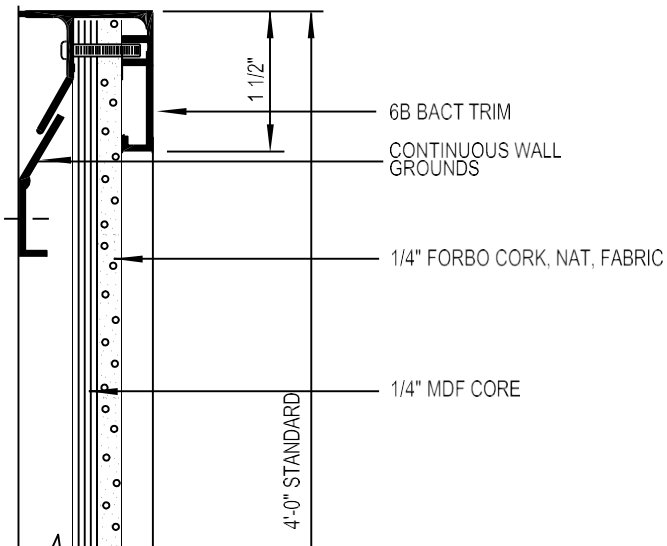
All units **AMERICAN MADE**: manufactured, assembled, framed, and finished at our factory and are delivered to the jobsite ready for installation.

Detailed installation instructions are available, making installation quick, simple and economical.

Chairman of the Boards (516) 295-7500 www.ChairmanOTB.com

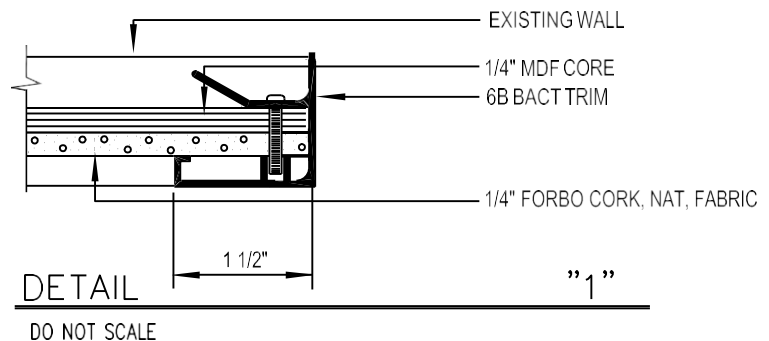
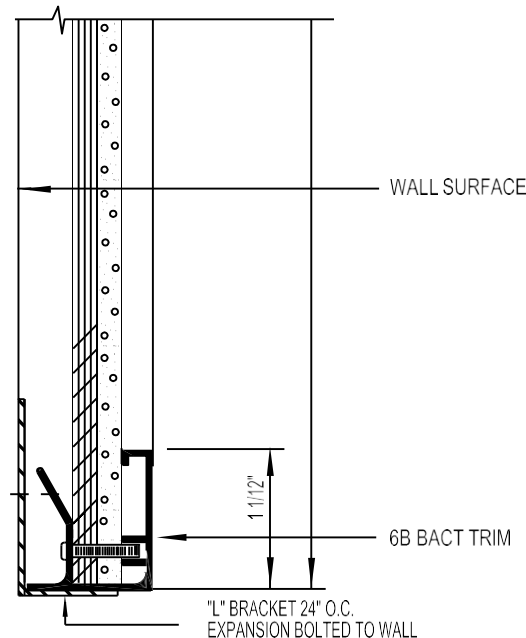
PREFABRICATED
"REDDI FRAME BIG APPL SERIES"

CORK TACK BOARD



ELEVATION

NOT TO SCALE



Our unique prefabricated REDDI FRAME "Big Apple" Series represents the finest in "Box" trim. As an alternative to the REDDI FRAME "Clip-Tite" Series, the "BACT" series affords the same practical functions at less cost.

The bulletin board Cork surface can be either [Forbo Bulletin Board Cork](#), which offers you homogenous construction, exceptional durability, uniform density, self-healing washable finish. The entire surface construction is bonded to burlap backing which is added for strength. It is available in 15 colors.

You may also have quarter inch Natural Cork (granulated pebble grain compressed Cork of medium density). **Other options** include [Harborweave™ Vinyl](#) or [Guilford of Maine™ FR701 Woven fabric](#).

All units are completely manufactured, assembled, framed and finished at our factory, and are delivered to the jobsite ready for installation.

Detailed installation instructions are available, making installation quick, simple and economical.

Chairman of the Boards (516) 295-7500 www.ChairmanOTB.com