

This Phase I self-guided walking tour will take you past some of the oldest existing buildings in Sumpter, spanning her history from the 1890s to 1935. Use the map to choose your route and look for the 6x7" silver number boards.



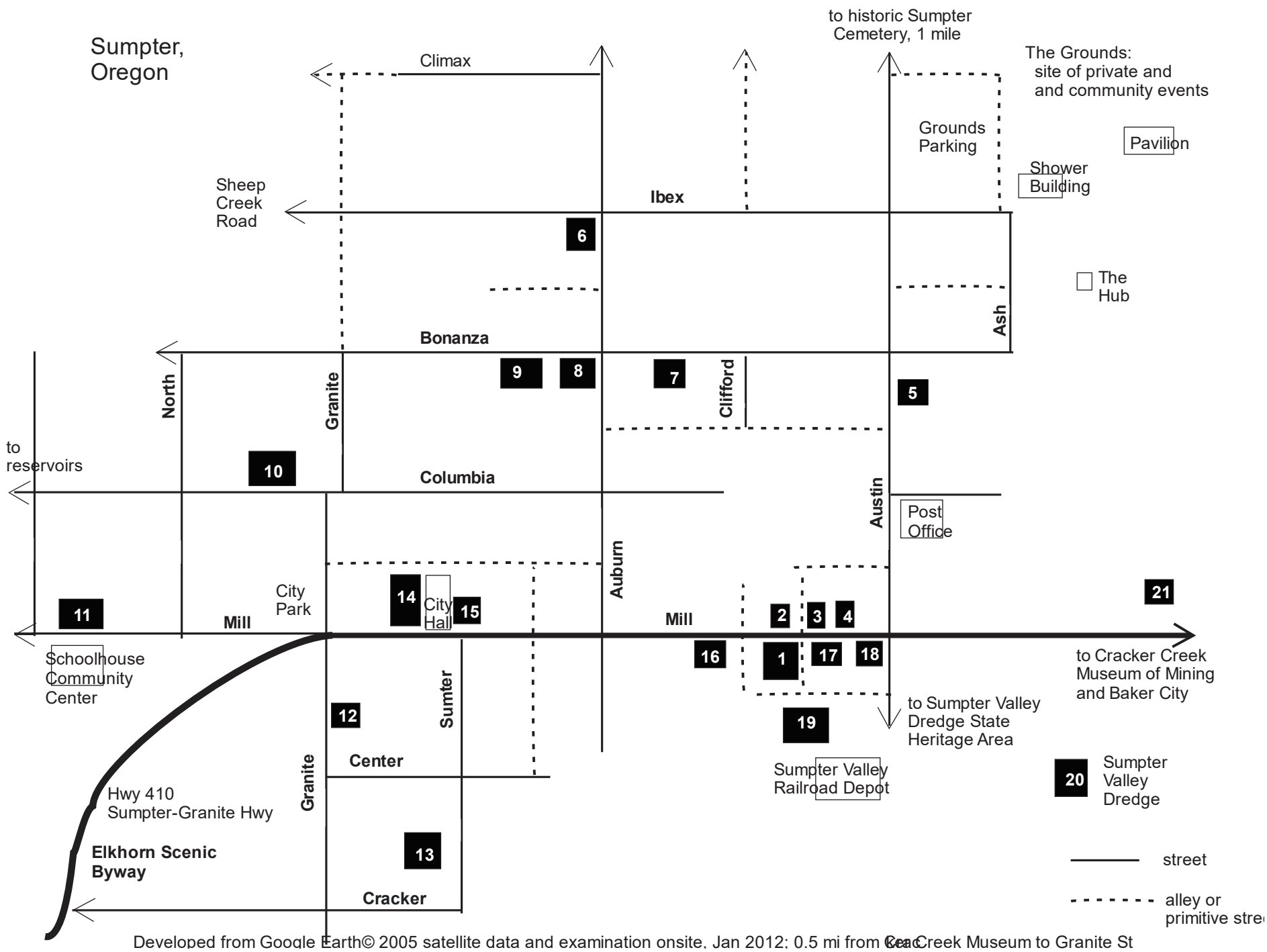
Please, many of these old buildings are in private ownership. Enjoy them from the street right-of-way, both out of respect and for safety reasons.

1 – Sumpter Municipal Museum occupies this 1899 brick building. Records of its early use are being sorted through, and probably it originally was a store. It was a mercantile in the 1960s and 70s, with gas pumps and a small section of historical displays.

2 – Black Market is an antiques store, but the building originally served as Sumpter Townsite Syndicate’s Engineering Department’s office. The Townsite Syndicate oversaw all early purchases of lots in Sumpter.



Photo courtesy of Baker County Library



3 – Assayer’s Office of A.H. “Woody” Woodwell. Woody had an enviable collection of assayer’s tools and other relics from before he owned the building.

4 – Sumpter Lumber Co. had its offices on the corner, and the yard stretched up Austin St. They operated from 1897 to 1908.

5 – Ed Hibbs’ House later belonged to Firman Wilson. Ed’s photography hobby helped record Sumpter’s history. Firman dabbled in doodle-bug gold dredging.



Photo courtesy of Baker County Library

6 – The Waite Wade House was built in 1898 by a mining engineer and has had several owners. It was purchased in 1959 by Hilton Clark. In 1997, Bill Clark raised the house to put a foundation under it—the beginning of a larger historical renovation project.

7 – Also being subjected to remodeling and renovation is this folk Victorian, an 1897 picture of which hangs in the Sumpter Museum. The bay window and the room behind it, including studs and floor joists, are original to the two-up, two-down **Sears kit**.

8 – The Episcopal Church suffered a fire in the 1930s(?), but was rebuilt. It was the only church that had survived the 1917 fire. The downhill addition was made in the 1980s.

9 – Gentry Taliafero’s House belonged to one of two photographer brothers, the other being Nick Taliafero, who lived half a block away. Their studio had a location on Mill and at another time on Auburn near Mill.

10 – Built in 1901, the **Hospital** has also served as a hotel, family dwelling, Masonic Lodge, and Bed & Breakfast.

11 – This house, built in **1894**, represents the houses on the hill of Sumpter’s early shakers and movers. John Doane was a dairyman and mine owner, J.A.Howard was president of 1st National Bank c. 1904-06, and Guy Ellis was the mine owner who built Ellis Opera House.

12 – Edwards Drug and **The Club** were two of many businesses on Sumpter’s main, planked drag. As fortunes rose and fell, businesses changed hands or names, closed, expanded, or moved. Edwards Drug succeeded.



Granite Street businesses, c. 1910
Photo courtesy of Baker County Library

13 – This is a replica of the **Capital Hotel’s cooling room**. The Capital, built in 1897, is where the August 13, 1917, fire started. In the three hours the fire burned through town, it caused an estimated \$500,000 in damage (1917 dollars).

14 – C.C. Basche Hardware conducted business here from the building’s 1899 construction until the fire of 1917. The City reconstructed the building in the 1920s with bricks salvaged from other burned brick structures. It served as City Hall until the 1970s.

15 – Bank of Sumpter vault is all that remains of this 1899 brick building post-fire. It was fenced in the 1970s to prevent loss of bricks to souvenir hunters.

16 – Sumpter Townsite Syndicate’s main offices were just one business housed here. Whitman National Forest had its headquarters here and the building has held an ice cream parlor and a sandwich shop as well.

17 – 1913 Superintendent’s House

18 – 1913 Superintendent’s Office

19 – 1913 Dredge Shop

These were in use when Powder River Gold Dredging Co. ran dredges No. 1 and No. 2, which dredged for gold in Sumpter Valley 1913-1924.

20 – Sumpter Valley Dredge worked the valley from 1935 to 1954. Restoration began in 1993, when OR State Parks purchased the derelict and formed the Sumpter Valley Dredge State Heritage Area around it. There are miles of trails in the park to use year-round and the dredge itself is open for limited exploring in spring and summer.

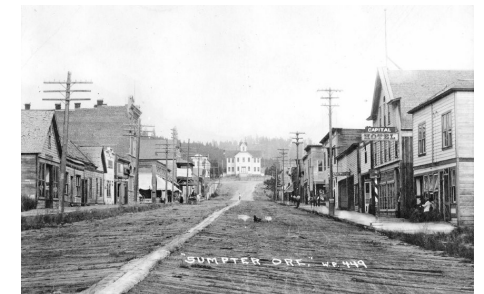
21 – Cracker Creek Museum of Mining is a self-guided outdoor display of historic mining and farming equipment. The distance from Granite St to CCMM is about 1/2 mile.

For more information about historic Sumpter, contact the Sumpter Municipal Museum: PO Box 67, Sumpter, OR 97877 or sumptermuseum.org

WELCOME TO HISTORIC SUMPTER

Sumpter was founded in 1862 by gold prospectors. By the early 1900s, the population had boomed to around 4000 people. It was already in decline when, on Aug 13, 1917, a fire destroyed twelve blocks of the downtown. Golden Sumpter was never again the same.

Photo courtesy of Baker County Library



c. 1914, Granite St looking east

Jan 2012, Granite St looking east

