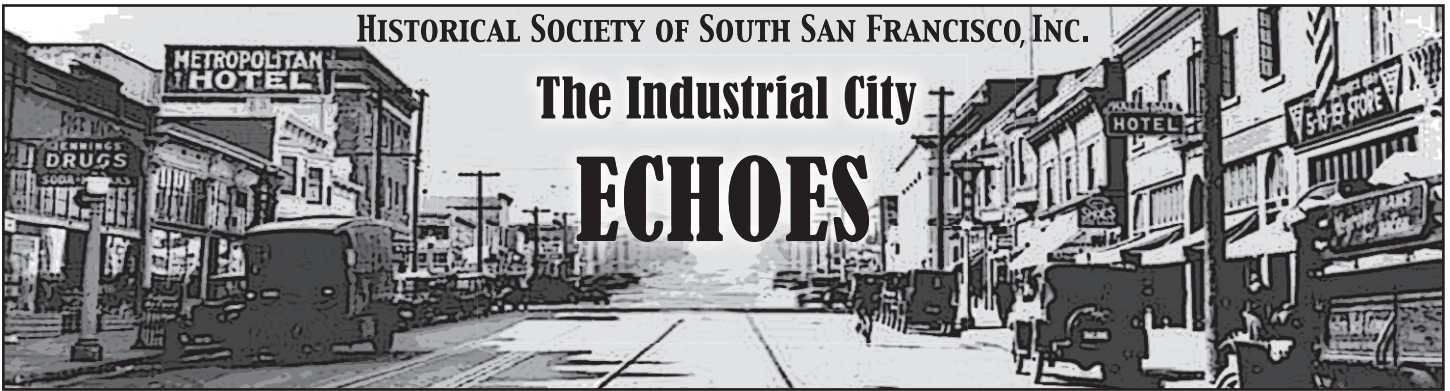


The Industrial City ECHOES



www.ssf.net/history

Newsletter No. 146 - June 2019

Inside This Issue

In Memory	2
Donations	2
New Members	2
Victorian Tea & Boutique	3
Plymire-Schwarz House Gets a New Fence	3
Thank You Roy Bava	3
Plymire-Schwarz House Paranormal Report	4
Streets Alive!	4
California Preservation Program ...	4
The #40 Trolley Line	5

2019 Calendar

June 17	General Meeting
July 15	Board Meeting
July 20-21 & 27-28	Victorian Tea
August 19	Board Meeting
September 16	General Meeting
October 18	Annual Dinner
October 21	Board Meeting
November 2	Champagne Reception
November 18	Board Meeting
December 16	General Meeting

General meetings are held at:
Magnolia Center, 601 Grand Ave. - 7:00 p.m.

Board Meetings are held at:
Society Museum, 80 Chestnut Ave. - 7:00 p.m.

*Members are welcome to Board Meetings.
Members and non-members are welcome
to General Meetings.*

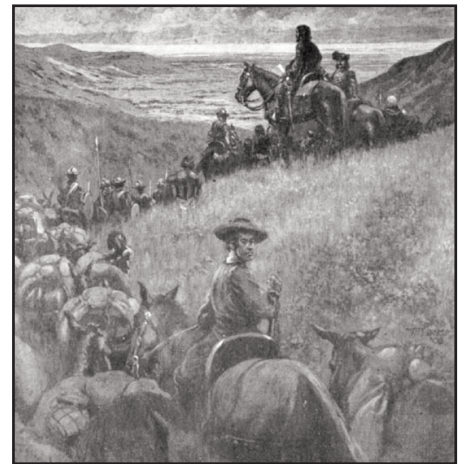


Program for June General Meeting

Monday - June 17, 2019 - 7:00 pm

Magnolia Senior Center, 601 Grand Avenue, South San Francisco

Cynthia Schreurs, from the San Mateo County Historical Association, will be the speaker at the June meeting. She will be discussing the new Ohlone-Portola Heritage Trail Project being created in celebration of the 250th anniversary of Portola's Expedition in 1769 and Discovery of the San Francisco Bay. Please join us for this interesting and informative program.



***This program is free and open to
members and non-members.***

Attention Cookie Brigade!

*Please remember to bring some treats
to share at the meeting.*



*SSF Women's Club co-sponsor's with
Improving Public Places landscape
clean-up project at the
Historical Society Museum*



**Check out the Historical
Society on Social Media!**



/SSFHistSocMuseum
/historicalssf
/plymireschwarzhouse



@historicalssf
@plymireschwarzhouse



plymirehouse.org

Elizabeth Marie (Lautze) Ervin
August 15, 1919 – April 22, 2019

When you think of the Historical Society Museum you must visualize Elizabeth Ervin. She was the mainstay of the museum for 30 years. She started volunteering at the Magnolia Museum in 1988, overseeing the move to Chestnut Avenue in 2007, and remaining there as top dog until January 2018. Dedicated to curating, she was self-taught and worked alongside Eleanore Fourie for at least 24 years. Elizabeth kept records and catalogued acquisitions, planned and organized exhibits, did as much research she could do without the use of a computer, and did all the administrative duties, including filing, purchasing supplies, and scheduling docents. Elizabeth was a Life Member of the Society, as well as awarded the Society's Lifetime Achievement Award in 2011. It was not often she'd miss a Society Board meeting, quarterly social meeting, or a P-S House Steering Committee meeting. She never had a problem questioning something she felt was "just not right" or speaking up when the Society needed to take immediate action to save a structure from being demolished.

Elizabeth loved her "South San Francisco" and lived here for 97 years. She attended South San Francisco High School and was a graduate of the Class of 1937. She was married to Richard Ervin (passed in 1987), and mother to Theresa, Carolyn, Joan, Barbara and Ginnie. It was quite a sight to see them all sitting together at an All Souls mass.

We will truly miss Elizabeth...her knowledge, her wit, her love and dedication to the Society. The museum has not been the same without her.

The Society sends its sincere condolences to the Ervin family.



In Memory

Don Cordo

Elizabeth Ervin

Earl Sanders

MEMORIAL DONATIONS

Don Cordo

James Ferrari

Elizabeth Ervin

Roy & Rose Bava, Evelyn Bellagamba,
Alan & Julie Chimenti, Carolyn Ervin,
The Fourie Family, Marilyn Galli,
Margot & George Giusti, Mary Giusti,
Cathy Henderson, Wayne Joseph,
Jerry & Kathy Krause, Marian Marsili,
Devine & Dan Devine,
Flor & Nenar Nicolas,
Robert & Sylvia Payne,
Richard & Michael Rocchetta,
Katy Sickles, Valerie Sommer,
Joan Stringer, Susan Thornton,
Ginny & Jerry Tilton,
Raymond & Marie Yoschak,
Shirley Zocchi

IN HONOR OF DONATION

Sylvia Payne

Beth Fanhorst

HISTORICAL SOCIETY DONATION

Steve Cresci, Carol Goodrich

HISTORICAL SOCIETY OF SOUTH SAN FRANCISCO AWARD NOMINATION FORM

Suggested Nominee _____ (person or entity)

If entity, suggested contact person

Victor John Feudale Award:

Statement in support of nomination – Include how this person or entity has contributed to the identification, preservation, or publication of our history or historic sites of our city, or of promoting the well-being of the Society through the significant contribution of their time, energy and resources.

Return to: Historical Society of South San Francisco
Attn: Dave Casagrande, 80 Chestnut Ave.
So. San Francisco, CA 94080

New Historical Society Members

Bruce Brian
Roberta & Joseph Carcione
Patrick Carroll
Oscar Guzman
Judy Albonico Kraus

Lifetime Historical Society Members

Edward & Robin Bortoli

Donations

Donation envelopes are available at the PS House and the museum. Memorial donations will be listed in the newsletter. Donations can also be targeted and are much appreciated to offset the printing of the newsletter. *Thank you!*

Plymire-Schwarz House Tea & Boutique

If it's July...it must be Tea Time at the Plymire-Schwarz House! Yes, that means it's time to find your hat and gloves...call your mother, sister, best buddies, and/or daughters and coordinate calendars. The house will be waiting for you decked out in her best. Come and admire our crisp new picket fence (a great backdrop for photos!), visit the yard and the PS Boutique to shop for something wonderful for yourself, your house, or a gift.



Inside, our team will be waiting for you with savory bites and sweet treats, and tea of course. If you are lucky, you may go home with a gift basket when we do our Room Raffle.

Having you come is exciting for the PS House Team who work really hard to deck the halls, dress up the yard and put together the most scrumptious Tea we possibly can. We hope you will join us. The first reservations will be taken on June 22 after 9:00 a.m. Leave a message with your name and phone number and your call will be returned in the order in which it was received. Till then, have a lovely spring and we will see you in July!

Margie Casagrande

Roy Bava Takes a Break

Our Society's visible presence in the community is accomplished in large part through our Museum and Plymire-Schwarz House. These facilities function thanks to the hard work of dedicated volunteers organized by our Museum Director, Sylvia Payne, and our Plymire-Schwarz House Steering Committee Chair, Roy Bava. Roy has been the leader of the Steering Committee since 2001 and has done an amazing job. Notable among all of his accomplishments was the successful completion last year of the beautiful replacement of the back porch. This improvement reflects many years of tireless efforts on Roy's part. He has now decided it is time to step down as the chair of the committee. I have asked Dave Casagrande to take over the chair of this important committee and he has agreed. We would not be where we are today without Roy's hard work and leadership.



Please join me in offering him a big THANK YOU!

Bill Zemke - President

Plymire-Schwarz House Gets a New Fence

If you had been at the Plymire-Schwarz House this winter you probably noticed the fence looking in rather poor shape. After several months of planning and preparation, the energetic team of Dave Casagrande, Rich Irli, Gene Hessler, Rich Busalacchi, and Bill Zemke descended on the site during the week of May 6 and replaced the fence on the front and west sides.



Further thanks to Rich Irli for securing a \$250 grant from Thrivent Financial to help defray the cost. It looks all fresh and new and ready for our upcoming tea in July. Thanks guys for all the hard work!

Happy 100th Birthday!



Edna deLarios (right) celebrated her 100th birthday on May 25th. Her sister-in-law June deLarios (left) is also turning 100 this year.

Help Preserve South San Francisco's Storyed History - Join Now!

If you have not renewed or want to become a new member please fill out this form and mail with check made out to: Historical Society of South San Francisco, 80 Chestnut Avenue, So. San Francisco, CA 94080

Name/Names/Corporation _____

Address _____

Phone # _____

Email _____

☐ Student . . . \$5.00 ☐ Individual\$15.00

☐ Family \$20.00 ☐ Supporter.....\$25.00

☐ Corporate \$100.00

☐ Life Membership \$500.00

Plymire-Schwarz House Paranormal Report

Spirits in the House!



Hello everyone. My name is Chris and I am the founder of a paranormal group (NorCal Paranormal Project) along with my husband, Mike. We have conducted paranormal investigations all over Northern California for the past 6 years. We have had the pleasure of visiting the Plymire-Schwarz Home on several occasions to conduct paranormal investigations. Our most recent visit was on May 4th.

We have a team of investigators and we set up equipment in various rooms of the home. Some of the equipment we use include cameras, video equipment, motion sensors, equipment that detects emf fluctuations, voice recorders and other technical equipment. Our goal is to try to capture any evidence of paranormal activity. We generally conduct a six hour investigation and utilize the equipment in the different areas of the home.



Although we are still in the process of reviewing evidence, we have captured a fair amount of evidence during our several investigations at the Plymire-Schwarz House. As such, it appears that the most active areas of the home are the garage, the master bedroom and basement areas.

We have several voice recordings in both the garage and basement areas. During our most recent visit, we acquired several voice recordings in the basement. The recordings included both a male and female asking for help (specifically 'help us' and 'I need help'). Additionally, one of the docents asked the question, 'Is Annie here?' We were able to capture a clear 'yes' voice recording in response to the question. The voice appeared to be of an elderly female. We also received the names 'Rose' and 'Joe' several times.

In the master bedroom, two different pieces of equipment activated. Both pieces of equipment light up if something gets within a certain proximity to them. Both pieces activated although there was no human contact with them. They appeared to activate in response to our questions.

One of our investigators is also psychic with the ability of clairvoyance (clear seeing). She indicated that while we were in the master bedroom, she saw the spirit of an older woman in the hallway watching us. She described her as an older woman in a night-dress with her hair in a bun. She believes that it was Mrs. Plymire. She also noted that she primarily stays in the upstairs area of the home.

It appears that any activity we captured involved spirits who were either curious or were possibly connected to the home in some way. We did not detect anything that felt negative.

We hope to uncover even more evidence once we have the time to get everything reviewed.

Chris Hernandez & Michael Schroer

Chris and Michael gave a wonderful presentation at the March general meeting.

California Preservation Program

SSF Oral Histories Now on Internet Archive

South San Francisco Historical Society Museum and South San Francisco Public Library partnered with the California Revealed Project to digitize 26 oral history tapes of well-known South San Francisco residents. These tapes are now preserved and accessible for generations to hear. Recordings are available to the public on the Internet Archive website.

Check out the links to see if your family member or a person you know has been included:

Historical Society:

<https://archive.org/details/southsanfranciscohistorical/>

Library: <https://archive.org/details/south-sanfranciscoliberalry>

Preserving Filipino-American History

Share Your Stories with the SSFPL History Collection

Help the South San Francisco Public Library History Room grow its collection of local Filipino-American history. We are seeking four to six people (narrators) to interview about the South City Filipino-American community. Stories about family immigration to California; growing up/living in South City; political, social and family life, and more are all welcomed. The deadline to sign up for the oral history project is June 20, 2019. For more information, email history@ssf.net or phone and leave a message at 650-877-8533.

Streets Alive!

Many thanks to everyone who visited the Historical Society table at **Streets Alive!** **Parks Alive!** at Orange Memorial Park.



Sylvia Payne manning the booth

The number 40 trolley line

Article taken from THE DAILY JOURNAL - Monday • February 18, 2008
Rediscovering the Peninsula by Darold Fredricks

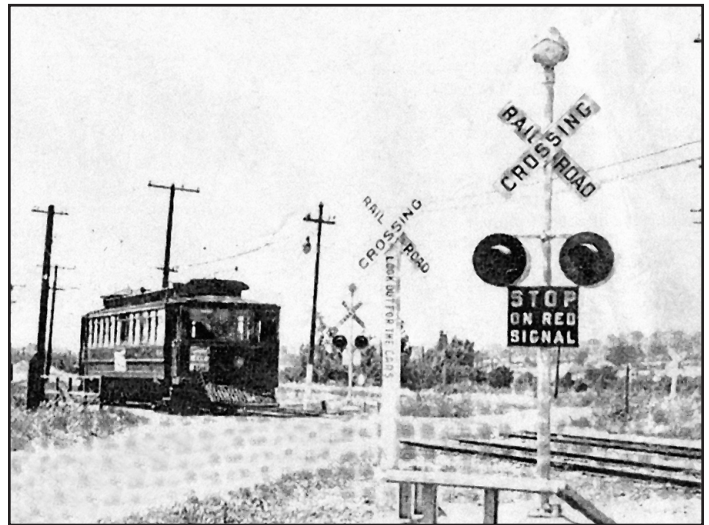
One of the fondest memories of older residents of Millbrae and San Bruno was a trip on the Interurban Trolley called the #40 Line.

Most of them used the trolley as a means of getting to and from the San Mateo and Burlingame high schools as cars were scarce and this was the main form of transportation available to them. It was an exciting and much anticipated journey before and after school as it afforded young men and women an opportunity to get acquainted. Not all of these encounters resulted in dates, but the minds of youth allowed them to play out their dreams and fantasies from the brief time they boarded until he or she exited the trolley. Youth does not always allow us to be bold enough to pursue fleeting love, but a few romances did end up gaining partners for life. Most had to be content to wonder just who that person was they met that day on the #40 Line.

The #40 ran parallel to the S. P. railroad line through South San Francisco, San Bruno and Millbrae, but at the Burlingame train station it was diverted to and ran down the middle of California Drive – North San Mateo Drive on its way to the San Mateo High School and San Mateo.

In 1890, the San Francisco and San Mateo Railroad Company was granted the first franchise to operate a line between San Francisco and San Mateo — the first rapid transit of the Peninsula. The line was completed to Baden Station in South San Francisco, running down Mission St., before it was sold and renamed the San Francisco and San Mateo Electric Railway. The interurban #40 streetcar right-of-way land ran parallel to and west of the Southern Pacific Railroad through most of the cities in San Mateo County. The new owners resold the line in 1901 and it was renamed the United Railroads of San Francisco. To fulfill the terms of the franchise, a single track was opened to San Mateo on Dec. 31, 1902. A power station to supply electricity for the line was built near the S.P. tracks at Millbrae Avenue.

Two-line service finally replaced the single-track service. In 1907, the anticipation and prospect of extending the line to San Jose prompted purchase of 12 large interurban cars (known as the 'Big Subs') which had been built originally for the Philadelphia and Western Company. These cars, larger and more comfortable than the earlier ones, are still remembered fondly by many riders of the line.



A #40 Line trolley headed south at Chestnut Avenue in South San Francisco.

During the early and middle 20th century, the #40 Line was a major form of public transportation along the Peninsula. Fares ran a nickel or dime, depending on your destination. Automobiles were still not as prevalent as they are now, so this was the main means of getting to the beach or downtown San Francisco.

The creation of the Peninsula Rapid Transit bus line in 1915 and the additions of the jitney service the following year resulted in transit reorganization. The Market Street Railway began to operate the #40 Line. As the fare increased, the S. P. railroad commuter service's very low fares (a 40-cent round-trip fare to San Francisco) began claiming the #40 Line's customers as it reduced the travel time considerably to downtown San Francisco. In 1944 the city of San Francisco purchased the Market Street Railway, including the #40 Line. Decreased revenues and loss of the Mission Street right-of-way caused the line to cease operations on January 16, 1949. This lack of transportation for the school kids prompted the building of Capuchino High School.

The tracks were either ripped up or paved over. On El Camino Real in Daly City, the center divider occasionally exposes some of the old rails that were not covered with cement or blacktop. This is the only visible reminder of the Peninsula's once widely-used form of public transportation. In San Bruno much of the right-of-way is being used for parking lots and the alignment of the BART transportation system.

I am greatly indebted to a San Mateo attorney, Francis A. Guido, editor and publisher of the Western Railroader and the Western Railfan magazine for almost all the information supplied here. He published this periodic magazine for nearly 50 years, mainly at his own expense, before he passed away a few years ago. His dedication to recording the #40 and railroads in general leaves a great legacy for future history enthusiasts.



The Industrial City ECHOES

Historical Society of South San Francisco, Inc.
80 Chestnut Avenue
South San Francisco, CA 94080

NON-PROFIT
Organization
U.S. POSTAGE
PAID
San Bruno, CA
Permit No. 750

OR CURRENT RESIDENT

South San Francisco Historical Society

Board of Directors

PresidentBill Zemke
First Vice PresidentDave Casagrande
Second Vice PresidentRich Irl
Recording SecretaryDenise Fernekes
TreasurerJulie Chimenti
Financial SecretaryDonna Smith

2017-2019 Directors

Lynn Boldenweck, Nancy Cassasa, Diane Huddleston,
Gloria Lagomarsino, Ginny Tilton

2018-2020 Directors

Jeanette Acosta, Sam Bonanno, Ruth DeNardi,
Gene Hessler, Valerie Sommer

Ex Officio Members

Roy Bava, Diana Ferrari, Mary Giusti,
Sylvia Payne, Ginny Tilton, Ray Yoschak

Plymire-Schwarz Steering Committee

Director: Dave Casagrande
Ex Officio: Roy Bava
Jeanette Acosta, Julie Chimenti,
Mary Giusti, Donna Smith

Museum Committee

Director: Sylvia Payne
Lois Severi

The SSF Historical Society is co-sponsored by the SSF Parks & Recreation Dept. It is through the City's generosity that many of the Society's goals are accomplished.

Contact & Location Information

Historical Society of South San Francisco, Inc.

80 Chestnut Avenue
South San Francisco, CA 94080

Historical Society Museum

80 Chestnut Avenue
650-829-3825
Tues & Thurs (2-4:00 p.m.) and
2nd & 4th Saturdays (1-3:00 p.m.)
Please call if you are interested
in volunteering at the museum.

History Room / Grand Avenue Branch Library

306 Walnut Avenue
650-877-8533
By appointment only.

Historical Society's Plymire-Schwarz House

519 Grand Avenue
650-875-6988
Wednesdays (2-4:00 p.m.)

Memberships Expire December 31

Membership runs on a calendar year expiring annually on December 31st.

Membership is \$15.00 per person - \$20 per family.
If you are interested in becoming a new member contact the society at 650-829-3825 or

Mail your check to:
South San Francisco Historical Society
80 Chestnut Avenue
South San Francisco, CA 94080

ECHOES: 650-829-3825 • ssfhistorical@gmail.com

Layout & Design: Gloria Lagomarsino • amgraphics25@yahoo.com