

December, 2024



LETTER FROM YOUR PRESIDENTS

Dear Members of the Case Management Association and Valued Vendor Partners,

As we close another remarkable year and prepare to welcome the opportunities of a new one, we want to take a moment to reflect on our collective achievements and express my heartfelt gratitude to each of you.

First and foremost, thank you for your unwavering support and dedication. Our members are the backbone of this association, and your commitment to advancing the field of case management inspires all that we do. To our vendor and business partners, your continued collaboration and shared vision have been integral to our success. Together, we form a community that thrives on connection, innovation, and excellence.

This past year, we celebrated an outstanding Annual Conference, which was a resounding success thanks to the contributions of all who attended, presented, and supported the event. The energy and enthusiasm during the conference reaffirmed the importance of coming together to share knowledge, build relationships, and inspire one another. We extend our deepest appreciation to everyone who made this event memorable—from our dedicated volunteers and speakers to our sponsors and attendees.

Looking ahead, we are thrilled about the educational opportunities we have planned for the upcoming year. Our association remains committed to providing high-quality programs and resources that empower case management professionals to excel in their roles. Stay tuned for announcements about webinars, workshops, and other initiatives designed to support your growth and success.

As we turn the page to a new year, let us carry forward the momentum we have built together. We are confident that 2025 will bring new achievements, strengthened partnerships, and continued progress in advancing the profession we are so passionate about.

With all we have accomplished throughout the year and year to come, we send a sincere thank you to our amazing board members who give so much of their time and dedication to ensuring the mission of our association, we wouldn't be who we are without each of you and the knowledge and compassion you bring forth. Thank you for all you do.

Wishing you and your loved ones a joyful holiday season and a prosperous New Year. Thank you for being an essential part of our journey.

With warm regards,

Debbie Moffett, RN & Kyle Spencer, RN
Co-Presidents
Case Management Association-OKC





Early detection saves lives. Whether it's your first screening or a routine check, our compassionate team is here to support you every step of the way. Services we offer:

Screening & Diagnostic Mammography • Contrast-
enhanced •
MRI •
Biopsy



Fewer Side Effects. Better Results. Proton therapy is an advanced form of radiation treatment that suits many types of cancers and tumor types. If a physician recommends radiation therapy as part of a patient's cancer treatment, proton therapy is likely an option. Unlike common radiation treatments that use X-rays or photons such as IMRT and Cyberknife, protons have a unique physical property that allows radiation oncologists to precisely target a patient's cancer and stop the protons inside the tumor, avoiding healthy tissue and organs. This decreases the likelihood of undesired and unnecessary side effects. In some cases, proton therapy even offers higher overall survival outcomes and lower recurrence rates than other forms of radiation treatment.

Devin Inhofe Proton Center/Premier Breast Health
5901 W. Memorial Rd.
OKC, OK 73142, (405) 733-6700



January 14th, 2025 – Community Hospital at Bethany Children's Center

February 4th, 2025 – AVEM Health Partners

March 11th, 2025 – Norman Regional – Ortho Central at Young Family Athletics Center

April 17th, 2025 – CMSA-OK Membership Drive

May 13th, 2025 – Centre for Neuro Skills at Hanger Clinic

June 17th, 2025 – Rheumatology Associates, Bethany Children's Center

June 24th-27th, CMSA National Conference, Dallas

August 14th, 2025 – Select PT at Proton Center

September 18, 2025 – Golf Tournament

October 7th, 2025 – Elevate Mental Health

November 10th - 12th, 2025 – CMSA OK





Revitalizing Hospitals. Elevating Communities.

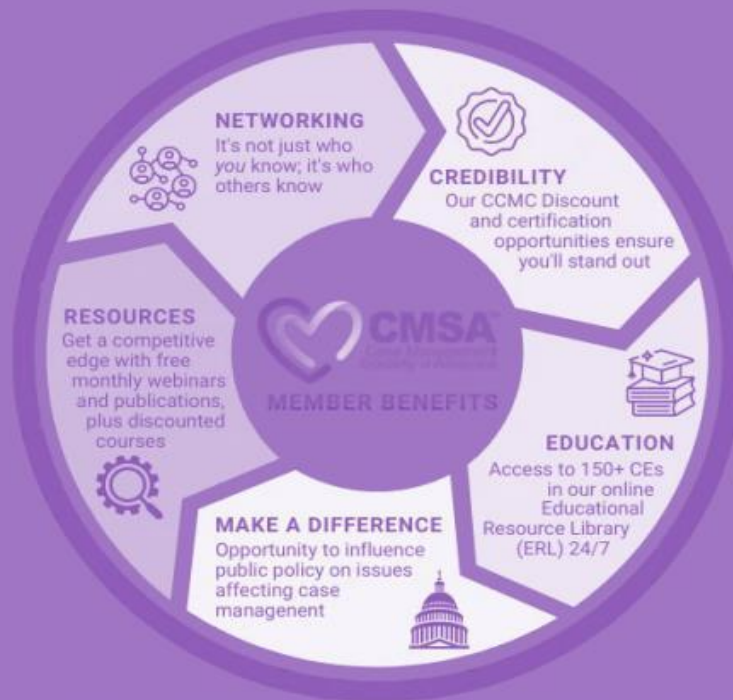
Let Avem Health Partners solve your patient referral needs. E-fax our clinical liaisons today at 405-835-6809.

avemhealth.com

14201 Wireless Way, Suite B-100
Oklahoma City, OK 73134

AVEM
HEALTH PARTNERS

CMSA MEMBERSHIP ADVANTAGES



- **FREE ELECTRONIC STANDARDS OF PRACTICE BOOKLET**
- **FREE EDUCATION RESOURCE LIBRARY**
- **FREE WEBINARS**
- **DISCOUNTED CMSA ANNUAL CONFERENCE RATE**
- **DISCOUNTED INTEGRATED CASE MANAGEMENT COURSE & MANUAL**
- **DISCOUNTED JOB POSTING RATES THROUGH THE CAREER CENTER**
- **20% OFF CCM CERTIFICATION AND RENEWAL**
- **FREE CMSA WRITER'S WORKSHOP**

HOW TO JOIN: Go to www.cmsa.org and click on Individual Membership information. You can join through their website. After joining CMSA National, you then will join CMSA-OK Oklahoma City.



WE OFFER SERVICES TO MEET A RANGE OF NEEDS



Provide your loved one with the quality care they deserve.

1. Receive a plan of care tailored to your loved one's needs.
2. Meet the caregiver we recommend based on personalities and specific needs.
3. Rest assured knowing that a BrightStar Home Care Registered Nurse conducts regular supervisory visits and that someone is here for you 24/7.

BrightStar Care of Oklahoma City
405-896-9600

brightstarcare.com/edmond-oklahoma-city

Home is where you feel most comfortable. And it's where you want to be when you or a family member need high-quality, compassionate care for your personal and medical needs.

Customized Care

Focused on helping your loved ones remain safe and independent in their familiar surroundings, we create a nurse-supervised plan of care that works for you and your budget. We serve seniors, children with special needs and others who need at-home support — from just a few hours a week to round-the-clock care.

Examples of personal care:

- Bathing, dressing, feeding, toileting
- Medication reminders
- Help with mobility in and outside the home
- Outpatient pre- and post-op care
- Personal home safety evaluation

Examples of companion care:

- Light housekeeping, laundry, grocery and meal prep
- Transportation to and from appointments or activities
- Time off for family caregiver (respite)
- Engage in activities such as puzzles, games and reading
- Facilitate and assist with daily schedule



Our location has been accredited by The Joint Commission — a widely recognized organization that evaluates the nation's best hospitals and other healthcare organizations.

EXPERIENCE Award-Winning Care



Make an Appointment
www.mcboh.com

100% Physician Owned

McBRIDE ORTHOPEDIC HOSPITAL

EMERGENCY: 405.486.2140

9600 Broadway Ext | OKC, OK 73114

Hospital-Based Outpatient Clinics

NORTH OKC

9600 Broadway Ext

EDMOND

400 N Bryant Ave

NORMAN

3700 36th Ave NW

McBride Clinic
KINGFISHER

5050 SW Lee Blvd

McBride Clinic
LAWTON

5050 SW Lee Blvd, Ste 2

McBride Clinic
YUKON

1491 Health Center Pkwy

Member Payment Plan Options

Membership Dues Options

CMSA now offers several options for paying your membership dues.

Traditional Annual Payments

Pay your annual dues in full and receive a renewal notice/invoice prompting payment for the next member year. This payment option is available to all Member Types.

Two Year Membership

CMSA now offers a 2-Year membership at a discounted rate of \$310 for A & B members, and \$216 for military members. A savings of \$15 per year over the regular annual rate. Two years local chapter dues are required at time of join/renew to take advantage of the savings. The 2-year membership is available only for Member Types Individual A/B, and Military. The 2-year membership is not available in conjunction with monthly dues payment plan.

Automated Monthly Dues Payment Plan

1. CMSA now offers the budget-friendly, monthly payment plan. These payments will be charged to your credit card each month until you choose to cancel your membership, or change payment types. See cancellation policy for more information. The first payment includes 1/12 of National dues, full payment of local chapter*, and .84 cents/month processing fee. Remaining 11 months will reflect 1/12 of National dues (and .84 cent monthly processing fee).
Available to Member types A and B only.

**Chapter Dues will be charged in full in the first installment payment and automatically renewed annually when opting for the monthly payment plan. The installment plan is not currently available for chapter dues.*

Example Monthly Auto Installment Payment: National dues \$170. Chapter dues \$20.

First monthly payment: National= \$14.16, Chapter= \$20, and Processing Fee= .84 for a total of \$35. Remaining monthly payments: National= \$14.16 + Processing Fee= .84 for a total of \$15.



Case Management Society of America

5034-A Thoroughbred Lane, Brentwood, TN

(615) 432-0101 • F: (615) 532-1715 cmsa@cmsa.org • www.cmsa.org



2025 CMSA-OK Partnership Opportunities

	SILVER Partnership – \$500		GOLD Partnership – \$1500
2 Free Attendees at Annual Conference		4 Free Attendees at Annual Conference	
2 Free Attendees at Monthly Education Events (Employees or Guests)		4 Free Attendees at Monthly Education Events (Employees or Guests)	
Ad and Logo in Quarterly Newsletter		1 Article Per Year (if submitted) In A Quarterly Newsletter	
Logo on CMSA-OK Website & Social Media		Ad and Logo in Quarterly Newsletter Logo on CMSA-OK Website & Social Media	

	PLATINUM Partnership – \$2000		DIAMOND Partnership – \$3000	ADDITIONAL SPONSORSHIP OPPORTUNITIES
1 Standard Booth at Annual Conference/Platinum Signage with Option to Upgrade to Showcase Booth for addtl \$200.		1 Showcase Booth at Annual Conference/Diamond Signage		MONTHLY EDUCATION EVENT - \$500
6 Free Attendees at Annual Conference (Employees or Guests)		10 Free Attendees at Annual Conference (Employees or Guests)		APRIL CMSA-OK MEMBERSHIP DRIVE - \$500
6 Free Attendees at Monthly Education Events (Employees or Guests)		10 Free Attendees at Monthly Education Events (Employees or Guests)		ANNUAL GOLF TOURNAMENT – SPECIALTY HOLES - \$700
Free Half Page Ad in CMSA-OK Conference Program		Free Full Page Ad in CMSA-OK Conference Program		DINNER/BEVERAGE CART/WATER BOTTLE - \$500
Free Hole Sponsor at CMSA-OK Annual Golf Tournament		Free 4-person Golf Team in CMSA-OK Annual Golf Tournament		ANNUAL CONFERENCE – CORPORATE - \$3000
1 Article Per Year (if submitted) In A Quarterly Newsletter		Free Hole Sponsor at CMSA-OK Annual Golf Tournament		BREAKFAST/LUNCH/TECHNOLOGY- \$1500
Ad and Logo in Quarterly Newsletter		1 Article Per Year (if submitted) In A Quarterly Newsletter		DECORATIONS - \$1000
Logo on CMSA-OK Website & Social Media		Ad and Logo in Quarterly Newsletter		BREAKS/WELCOME RECEPTION – \$500
		Logo on CMSA-OK Website & Social Media		

We would like for your business to be actively involved with the association. You will have early selection of your conference booth before registration opens to the general public and non-sponsor members. Membership will run January to December.

CMSA-OK, P.O. Box 1118, Newcastle, OK 73065, 405-406-1933, director@cmsa-ok.org



2025 CMSA-OK Partnership Form

Company Name: _____

Contact: _____ Phone: _____

Business address: _____

City: _____ State: _____ Zip: _____

Email: _____

Email Blast - \$150 per page

At the discretion of the CMSA-OK Board, sharing of professional events, such as Open House, CEU Meetings/Webinars, etc. will be shared with the CMSA-OK Membership for \$150 per page. Must be an active Business Sponsor or CMSA-OK member to participate.



Partnership Level Selected:

- ____ - \$500 Silver Partnership
- ____ - \$1500 Gold Partnership
- ____ - \$2000 Platinum Partnership
- ____ - \$3000 Diamond Partnership

\$_____ TOTAL

Additional Sponsorships Chosen:

Education Events \$ _____

Membership Drive \$ _____

Golf Tournament \$ _____

Annual Conference \$ _____

Sponsorship Name: _____

Payment/Date:

____ Check being mailed, due within 14 days Today's Date _____

____ Credit Card – Call with information or email information Today's Date _____

CC# _____ EXP DATE _____ CVV# _____

CC ZIP CODE _____ SIGNATURE _____

A receipt will be emailed to you.

Thank you for your support,

Julie A. Harvey, M.Ed., NCC, LPC, CRC, CVE

CMSA-OK Executive Director

CMSA-OK, P.O. Box 1118, Newcastle, OK 73065, 405-406-1933, director@cmsa-ok.org

Summer is for Fun, Not Injuries We've Got You Covered!



**ORTHO
STAT**

**Orthopedic Walk-In Clinic
Open 7 Days a Week.**

Call 405.515.5575

**Summer means fun, games and
with more activities, an increased
risk of injury.**

Whether it's a sprain at soccer or a pulled muscle during a morning run, Ortho Stat is ready every day to help you recover quickly and safely. With our team of specialized orthopedic providers, you're in expert hands for immediate care!

Visit Ortho Stat at the corner of I-35 and Tecumseh Road in Norman. We're open daily because injuries don't take days off!



3400 W. Tecumseh Rd. Suite 101A
Norman, Ok 73072

Hours: Mon-Fri: 9 a.m.-7 p.m., Sat-Sun: 11 a.m.-7 p.m.

OuchOrthoStat.com

Meet our Team:



**Jordan Redd,
PA-C**



**Joe Bourland,
PA, ATC**



**Chris Travis,
PA-C, CAQ-OS**

- ❑ Open every day of the week
- ❑ Comprehensive Services: On-site splinting, casting, and X-rays
- ❑ No Appointments Needed: Walk-ins welcome
- ❑ Specialized Expertise: Care from providers trained in orthopedics

2023-2024 CMSA-OK BUSINESS PARTNERSHIPS SPONSORS







Propel
Physical Therapy



Total
Wound Care



SENIOR

Helpers

Senior Care, Only Better.



VALIR
Physical Therapy



Seniors
Helping
Seniors

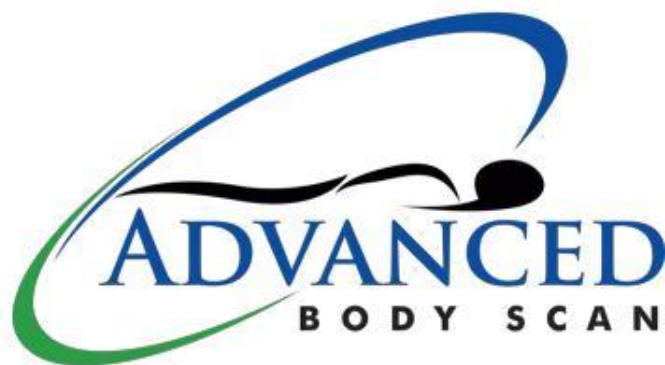


VALIR
Rehabilitation Hospital



SYNERGY
HomeCare

2024 CMSA- OK ANNUAL CONFERENCE BOOTH EXHIBITORS





Dexcom
CONTINUOUS GLUCOSE MONITORING



dynamic
WOUND CARE



First Call®
Your Staffing Source

 **FLEX**
MEDICAL
GROUP

 **Hanger**
CLINIC
Empowering Human Potential

 **HealWell**
Wound Care Solutions

 **Home Instead**®
To us, it's personal

 **ignite**
MEDICAL RESORTS

 **IMPACT**
MOBILITY TRANSPORTATION
(405) 885-2566



LifeCare Mobility Transportation







