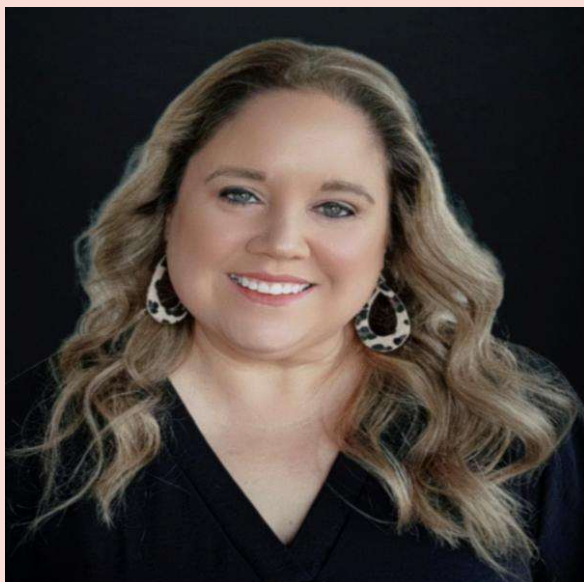


MARY BRAWNER, MHR, CCM



Mary Brawner is a seasoned healthcare leader with over 18 years of progressive experience in case management, care coordination, and hospital operations across acute and long-term acute care settings. She currently serves as Director of Case Management at PAM Health Specialty Hospital of Oklahoma City, where she oversees interdisciplinary teams, patient flow, discharge planning, and complex transitions of care.

Throughout her career, Mary has led high-performing case management teams, developed compliant and efficient workflows, and partnered closely with physicians, nursing leadership, payors, and community providers to ensure patients receive the right level of care at the right time. Her expertise spans utilization review, regulatory compliance, discharge planning, and navigating complex payer and CMS requirements.

Mary holds a Master of Human Relations with an emphasis in Social Work from the University of Oklahoma and is a Certified Case Manager (CCM). Known for her compassionate, patient-centered leadership style and clear communication, she brings a practical, real-world perspective to understanding healthcare levels of care and their impact on outcomes, length of stay, and continuity across the care continuum.



CMSA-OK FEBRUARY
EDUCATION EVENT

**"The Health Care
Continuum-Understanding
Levels of Care"**

FEBRUARY 19, 2026

4:30 PM MEET & GREET
(SPONSORED BY PAM)

5:00 PM PRESENTATION

LOCATION:

PAM HEALTH SPECIALTY
HOSPITAL

1407 N. Robinson Ave.,
OKC, OK 73103

1.0 CEU – CCM, SW,
CRC/CVE

