

The logo for CMSA OK, featuring the text "cmsa ok" in a bold, lowercase, sans-serif font. The "o" in "ok" is stylized with a horizontal line through it.

case management society of america • oklahoma

An aerial photograph of Oklahoma City at dusk, showing the city skyline with illuminated buildings and streets. The sky is a mix of blue and orange from the setting sun.

MARCH CONFERENCE NEWSLETTER 2022

Greeting CMSA-OK Members and Colleagues,

My how the weather changes in Oklahoma. We have recently seen winter, summer and spring then back to winter and hopefully the real spring is just around the corner. It also seems that COVID changes as much as the Oklahoma weather. Thank goodness for the recent decline in COVID numbers following the Omicron variant. I hope that this declining trend will continue and we will see brighter days and warmer weather in the very near future.

We are very excited about our upcoming conference. The conference that you have heard about for 2 years is finally going to happen. On April 7th, we will hold our 2022 spring conference, Case Management Round-Up 2022 at the Embassy Suites on Northwest Expressway in Oklahoma City. Registration will begin at 7am and our first speaker will begin at 7:30. Registration for the conference is only \$50 for CMSA-OK members and \$100 for non-members. You can register for the conference on our website through the following link, www.cmsa-ok.org/2022-april-conference. The conference will provide the attendees with seven CCM hours including one hour of ethics. Almost all of our vendor booth have been reserved. We only have three booths left available so please reach out if you have not yet reserved your spot.

Your safety is very important to us. That is why we are partnering with Freedom Health Solutions to provide air purification services at our conference. They will provide surface and air portable devices throughout the conference center that utilize ActivePure® developed with NASA Space Technology that disinfects surfaces and purifies air and is scientifically proven to reduce contaminants such as viruses, bacteria, allergens, odors, toxins, smoke, VOCs, dust, fungi, mold, and includes today's current virus. We will also have masks available for all attendees and vendors and recommend social distancing when possible. Just a couple more pre-caution we can take to make sure that our most valuable assets. Our members, sponsors and vendors, are kept safe during the conference.

Continued on page 2

CALENDAR OF EVENTS

APRIL 7TH,
2022

"CASE MANAGEMENT ROUND-UP"

1 DAY CONFERENCE

Exhibitors, Networking,
Education & More!

CEUs Pending for CCM,
Social Workers,
Administrators

[Register Here](#)

June Membership
Meeting

More Info soon!

Membership Luncheons

Returning

CCMC Workshop

Sept. 23 & 24, 2022

See you soon!

2022 CMSA-OK Board

OFFICERS

President: Robert Fuxa

RFuxa@hpillc.org

President Elect: Chad Sommers RN, CCM

Chad.Sommer@compchoice.com

Vice-President: Debbie Moffett RN, OHN, RM, CM

debbie.moffett@aarcorp.com

Secretary: Kyle Spencer RN, BSN, CCM

kyle@eiffelmedical.org

Treasurer: Randy Hulin

Randyh@vrcinvestigations.com

Past President: Natalie Teeter

NTeeter@Hanger.com

DIRECTORS

Sara Forrest

sara@cohesivehealthcare.net

Tamara Webb MSN RN

twebb@seniorhelpers.com

Maria Davidson

madavidson@selectmedical.com

Charita Chavez MSN, RN, CCM

Charita.Chavez@integrisok.com

Becky Grantham

becky@scrs-ok.com

ANCILLARY BOARD MEMBER

Kurt Ederer RN, CCM

kjernccm@aol.com

Wendy Gerdes – CMSA-OK Executive Director

405-406-1933

director@cmsa-ok.org

cmsa ok

case management society of america • oklahoma

We always appreciate input from our members and partners. If you have an idea you would like to share, a topic you would like to learn more about or would like to become involved as a board member, please do not hesitate to reach out to me at 405-474-5050 or rfuxa@hpillc.org. I would love to visit and collaborate with you regarding how we can improve and grow our local chapter.

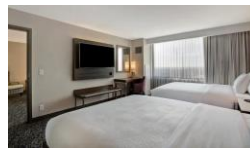
All the best,

Robert Fuxa

CMSA-OK Chapter President



Embassy Suites by Hilton
Oklahoma City Northwest
3233 NW Expressway
Oklahoma City, OK 73112



Your stay includes

- ✓ Free made-to-order breakfast
- ✓ Complimentary evening reception
- ✓ Free parking ✓ Free WiFi ✓ Non-smoking rooms
- ✓ On-site restaurant ✓ Indoor pool ✓ Fitness center
- ✓ Business center

[Reserve TODAY](#)

2 Queen Beds 2 Room Suite
\$149 per night

1 KING BED 2 ROOM SUITE
\$149 per night



R. Garrett Steinmetz, MD

ORTHOPEDIC SURGEON

Dr. R. Garrett Steinmetz at Oklahoma Sports Science and Orthopedics is a fellowship trained orthopedic surgeon specializing in sports medicine treating adult and pediatric patients. Dr. Steinmetz has advanced training in both the arthroscopic and open treatment of shoulder, knee, elbow and hip injuries.

As a native Oklahoman, he strives to provide exemplary orthopedic care for his fellow Okies, explaining options and treatment plans in-depth.

"I encourage my patients to always be engaged with the decision-making process when it comes to their medical care," he said.

Dr. Steinmetz completed his medical school and residency training at the University of Oklahoma and fellowship training at the prestigious Washington University in St. Louis, where he was an associate team physician for the Stanley Cup Champion St. Louis Blues and multiple NCAA Division I, II and III universities. He has been and continues to be very involved in advancing orthopedic knowledge through his research.

During his residency, Dr. Steinmetz was published over 25 times in various major medical journals regarding orthopedic surgery and sports medicine. He completed multiple poster and podium presentations at conferences across the country and was awarded Best Clinical Manuscript at several orthopedic conferences. During medical school, he was a member of the Alpha Omega Alpha Honor Society.

He is a member of the American Orthopedic Society for Sports Medicine, Arthroscopy Association of North America and the American Academy of Orthopedic Surgeons.

CASE MANAGEMENT ROUND-UP AGENDA

Registration Begins – 7:00 am



7:30 am – 8:30 am – “Rheumatology & Infusion Care”
Latisha Heinlen, MD Rheumatology Assoc. of Oklahoma

8:30 am – 9:30 am “Radiation Therapy”
John Hanchih Chang, MD Oklahoma Proton Center



9:30 am Exhibitor Break



10:00 am – 11:00 am – “Neurological Spine Care”
Qualls Stevens, D.O.
Neurosurgical & Spine Associates of Oklahoma



11:00 am – 12:00 pm – “Normalizing Grief in an Abnormal World”

Aaron Coffman Humanity Hospice



12:00 pm – Taco Bar Lunch



12:20 pm – 1:30 pm – “Situational Awareness”
Corporal Kim Lopez Cleveland County Sheriff’s Office



1:30 pm – Exhibitor Break

2:00 pm – 3:00 pm – “WC Red Flags”
Curtis Whitfill VRC Veracity Investigations



3:00 pm – Exhibitor Break

3:30 pm – 4:30 pm - “Wound Care and Covid Related Skin Conditions”
Kari Harman, RN, CCM, CWCA, AACCWS, DAPWC
Wound Wise Consulting, LLC IWOUND



4:30 pm – Robert Fuxa CMSA-OK President

Conference Wrap up and prizes



Freedom Health Solutions specializes in surface and air disinfection practices, and we are national distributors for a NASA Originated, Certified Space Technology called ActivePure®. It is the most powerful Surface and Air Purification technology ever discovered. The surface and air portable devices use ActivePure® developed with NASA Space Technology that disinfects surfaces and purifies air and is scientifically proven to reduce contaminants such as viruses, bacteria, allergens, odors, toxins, smoke, VOCs, dust, fungi, mold, and includes today’s current virus COVID 19. There are many different sizing device options for the sq footage of need on building structure setup or customer need. Over 50 million entities in 70 countries, including restaurants, businesses, schools, and more have made the investment into their workplace and facilities. My Company, Freedom Health Solutions, is local company in Edmond, OK and we work to educate on Air & Surface Purification and ActivePure and other technologies. I have included and attached some information on ActivePure and Product that can be put in any healthcare entity/facility. We do anything from demos to third party testing to ensure companies have a comparison stand point when evaluating specific products or competitor type promises. Our products which is big for Discharge planners or Case Managers are also just as beneficial and important for commercial use. We look forward to working with your organization on education and presentation opportunities if needed or requested by anyone.



Features ActivePure Technology proven to reduce viruses, bacteria, and other pathogens (full list of tested pathogens available below in "The Proof")

THE TECHNOLOGY

The Aerus Pure Cloud provides ActivePure in the form of a 2'x2' ceiling tile for situations when a portable unit cannot fit in the room. Patented ActivePure is an advanced surface and air purification technology. It has been proven to reduce over 99.9% of many common airborne and surface contaminants (list of tested pathogens can be found in "The Proof" section below). ActivePure does not replace the need to follow CDC guidance and should be used as a complementary technology.

THE PROOF

In extensive unaffiliated lab testing, ActivePure® Technology has been proven to significantly reduce the following contaminants and pathogens:

- SARS-CoV-2 – RNA Virus
- H1N1 Influenza
- H5N8 Influenza
- Murine Norovirus
- PhiX-174
- MS2 Bacteriophage
- MRSA
- E. coli
- Salmonella enterica
- Legionella pneumophila
- Clostridium difficile
- Bacillus globigii
- Erwinia herbicola
- Listeria monocytogenes
- Candida auris
- Botrytis cinerea
- Sclerotinia sclerotiorum
- Aspergillus versicolor
- Aspergillus niger endospores
- Methicillin-resistant Staphylococcus epidermis
- Staphylococcus epidermidis

THE BENEFITS

The Aerus Pure Cloud provides surface decontamination and air purification without the use of ozone or other harmful chemicals. It is a proactive and effective solution for your home or business.

- New and improved ActivePure Technology delivers world-class surface decontamination and air purification technology
- Over a decade of testing, patented ActivePure® Technology has been proven to reduce over 99.9% of many common airborne and surface contaminants including viruses, bacteria, mold, fungi, VOCs, smoke, allergens, and odors (full list of tested pathogens available in "The Proof" section)
- Quickly works to clean the indoor environment



Corey
Freedom Health Solutions
 2000 West Danforth Rd Suite 132
 Edmond, OK 73003
 (405)-227-8484
 Office
 (405)-938-6896 Cell



IT'S 4 PM ON A FRIDAY.

You have an urgent discharge that needs staffing. Now, who do you trust to get it done?

Urgent or not, when the heat is on, we're here and ready to provide world-class service for you and your patients. Visit www.vgmhomelink.com/relentlesslygood to learn how HOMELINK is raising the bar for ancillary services in the healthcare industry.

RELENTLESSLY GOOD.

800.482.1993 • vgmhomelink.com • homelinkreferrals@vgm.com



A-021722-001-000-WC

Howdy CMSA-OK Partners,

YEEE HAW!!!

It's great to back in the saddle and planning an in-person conference. As I put the newsletter together, we have SOLD OUT of Booths for the April Conference. This is exciting that we have exhibitors and sponsors who want to see YOU, the Case Managers, Nurses, Social Workers and many Healthcare Professionals. We know time is precious and the exhibitors are here to show you services, products and information to help you in your profession. There are many returning exhibitors and several new ones.

The education for the conference was designed by YOU, we asked for topics from the membership and went from there. CMSA-OK Education Committee worked diligently to bring you relevant topics for today's health issues. Covering topics from Rheumatology, Radiation Therapy, Spine Care, Grief, Situation Awareness, Work Comp, and Wound Care with Covid. The lineup of speakers and their back grounds are the best in their profession. We hope you have read the registration brochure that was mailed and emailed out in February. CMSA-OK's due diligence is to work for You, the membership. CEUs are pending currently from CCMC. Social Workers have been approved for 7 general CEUs and Administrators will receive a Certificate of Attendance. Attendees will be required to sign in at the CEU area and turn in the education evaluations forms for each session.

The conference is a western theme this year and we are looking forward to see how the Exhibitors decorate the area. All attendees will pick up their name badge, educational packet, Bingo Card and Tote Bag sponsored by **Laura Lynn's Home Care**. The registration area, sponsored by **Commission for Case Manager Certification**, is to the right when you come in from the back parking lot at the Embassy Suites. The bingo card is for every attendee to visit the Exhibitors and have it stamped. Once your card is full, turn in to be entered in for door prizes at the end of the conference.

We also know you are concerned about your health safety; we will have masks available to everyone and having **Freedom Health Solutions** purify the educational area, exhibit area and hallways we are in. Please read more about Freedom Health Solutions on page 5.

CMSA-OK needs to thank **Community Hospital/HPI, OSSO and Hanger Clinic** for being Platinum Sponsors for the Conference. The Co-Luncheon Sponsors are **Senior Helpers Greater OKC** and **IWOUND**, Break Sponsors are **Bridges Health, Home Care Assistance and Select Physical Therapy**, you are so appreciated! Please visit with them and thank them for their support.

Please let me know if you have any questions. I look forward to seeing you all April 7th!!

Wendy Gerdes – Executive Director

405-406-1933

director@cmsa-ok.org



Commission for Case Manager Certification



CLINICAL STUDY

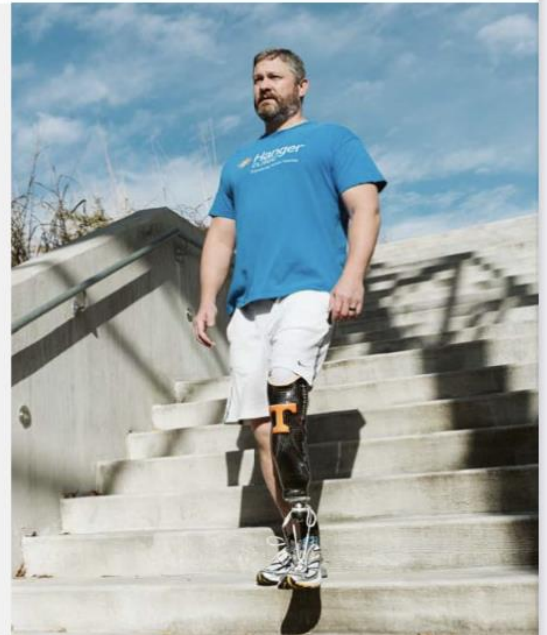
Impact of Time to Receipt of Prosthesis on Total Healthcare Costs 12 Months Post-amputation



CONCLUSION

Earlier receipt of a prosthesis is associated with reduced spending in the 12 months post-amputation of approximately **\$25,000** compared to not receiving a prosthesis.

Our results suggest that not providing or delaying the provision of a prosthesis increases costs by about 25%.



JOURNAL

American Journal of Physical Medicine and Rehabilitation (AJPMR) - May 26, 2020

OBJECTIVE

Assess the impact of a prosthesis and the timing of prosthesis receipt on total direct health care costs in the 12 months post-amputation period.

AUTHORS

Taavy A Miller, MSPO^{1,2} • Rajib Paul¹, PhD • Melinda Forthofer, PhD¹ • Shane R. Wurdeman, PhD^{2,3}

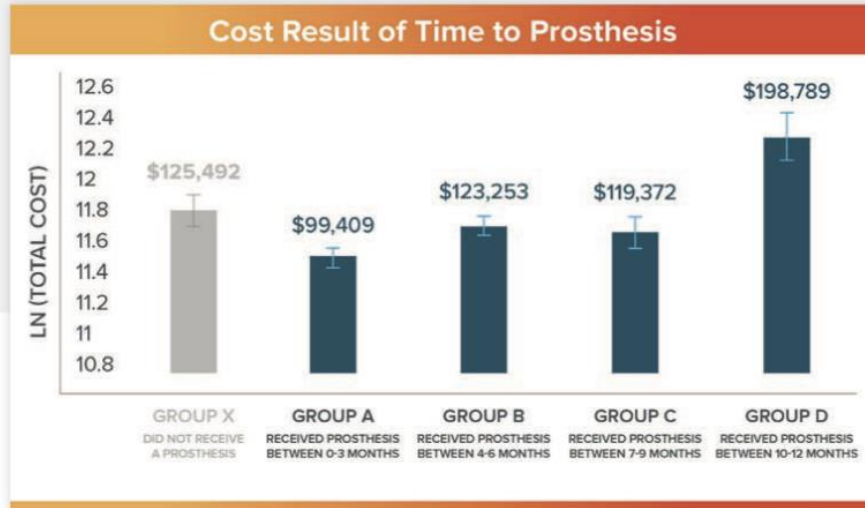
¹Department of Public Health, University of North Carolina at Charlotte, Charlotte, NC, USA

²Department of Clinical and Scientific Affairs, Hanger Clinic, Austin, TX, USA

³Department of Biomechanics, University of Nebraska at Omaha, Omaha, NE, USA

[See reverse for study details](#)





DESIGN

Data on patients with lower limb amputation (n=510) were obtained from a national commercial adjudicated claims (Watson) database for retrospective cohort analysis which includes all inpatient and outpatient claims.



Patient Inclusion Criteria:

- Lower limb amputation
- Continually insured



Patient Demographics:

- Between ages of 18 – 64
- 75% had a Transtibial amputation (p<0.0001)
- 70% were male (p=0.06)
- 64% were diabetic or had vascular disease (p=0.11)

▶ Learn more about Hanger Clinic's Research at HangerClinic.com/Research.

RESULTS

- Patients who received a prosthesis between 0-3 months (Group A) post amputation saved 25% in healthcare costs as compared to those who did not receive a prosthesis (Group X) (p=0.044).

- Average total healthcare costs were similar for individuals receiving their prosthesis between 4-6 months (Group B) and 7-9 months (Group C), including the cost of a prosthesis and those who did not receive a prosthesis (Group X).

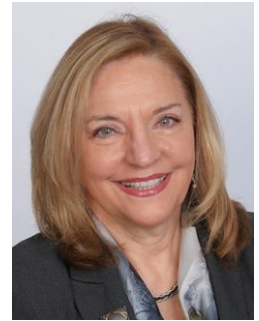
- There is considerable economic value in providing a prosthesis prior to 10 months post-amputation, resulting from prosthetic mobility and quality of life.

To learn more about this study and download the full publication, visit HangerClinic.com/ImpactStudy.



COMING TO TERMS WITH LONG COVID IN THE WORKPLACE: DISABILITY MANAGEMENT SPECIALISTS CAN LEAD THE WAY

By Vivian Campagna, DNP, RN-BC, CCM



It's been an intense two years for case managers and disability management specialists.

On top of your regular responsibilities—which probably expanded during the pandemic—you've probably been called on to help develop COVID-related policies and interpret new regulations. You've seen the locus—and definition—of “the workplace” change. It's a lot to keep up with. Now, another challenge has emerged: long COVID, officially termed “post-acute sequelae of COVID-19 (PASC).”

Long COVID isn't exactly new, but only recently have we begun to grasp the impact of long COVID on the workplace. Case managers and disability management specialists must equip themselves to educate clients and employers alike. Managing employees with PASC will probably be an ongoing issue for employers. That's why we offered the recent webinar, “COVID-19 and the Effect on the Workplace: Return-To-Work Strategies and COVID Long- Haulers.”

Here's some of what we learned about PASC:

Symptoms develop at least four to eight weeks after the initial COVID-19 infection.

Among those more likely to develop long COVID are people who are older, those with lower incomes, those with serious pre-existing conditions, those with a higher BMI and women. It's more common after severe cases of COVID-19.[1],[2],[3]

Research suggests vaccinations may reduce the chances of developing long COVID among those who are infected. [4]

Anywhere from 10% to 30% of COVID-19 survivors develop PASC. Charles Glassman, MD, associate medical director, the Standard Insurance Company, placed the percentage closer to 15%, which means up to 3.1 million people are expected to develop PASC—almost 2% of the workforce.

Working amid uncertainty

Researchers are still trying to more fully understand PASC, but as many case managers and disability management specialists have already discovered, we can't wait until they have it figured out. We need to work with our clients who are struggling with long-COVID symptoms today.

Some long COVID symptoms resemble COVID symptoms, but others are new. These include anxiety and depression, chest pain and palpitations, cognitive impairment (brain fog), joint pain and sleep problems. These, combined with fatigue, breathing discomfort and other COVID-related symptoms, can make it difficult—even impossible—for some people to work.

Employees dealing with long COVID may soon become one of the largest groups of workers requiring accommodations. The average long-term disability duration for a PASC patient is about 90 days, but for nearly a quarter of patients, it can take more than five months.

All of this could change: It's a new condition with an array of symptoms—and we don't have a template.

Advocating for clients, enlightening employers

Employers frequently question the validity of subjective conditions, and many have been skeptical of long COVID. Supporting clients, therefore, involves educating the employer about PASC, ensuring they understand it's a real diagnosis. This helps the client, but it's also important that employers recognize the legal and compliance issues involved. Even supportive employers may find long COVID symptoms difficult to understand. Case managers and disability management specialists can point them to the resources they need.

There's tremendous shame and stigma associated with subjective conditions in general, and now we're talking about a new one that even the experts don't fully understand. Our clients need us to stand up for them. As Daniel Jolivet, PhD, behavioral health director, the Standard Insurance Company, said during the webinar, "The client needs to see you as their advocate, as their partner, as someone who they can trust and someone who will support them and remind them that what they're going through is real." You may also need to help the client recognize that they're looking at gradual rehabilitation and recovery. There is no "cure."

Learning to manage

With no objective outcomes to guide a client's progress, it's easy for everyone involved to become frustrated. Among the advice we gleaned from the webinar:

Emphasize self-care—eating well, getting enough sleep and safely getting as much exercise as possible. Partner with the employee to improve communication and collaboration among providers.

Focus on rehabilitation or recovery rather than a cure.

Keep in mind that rehabilitation is most effective when led by the client and remember that the client—not the employer—is the expert on which symptoms are most disruptive.

Moving forward

PASC may be relatively new, but we already have some tools to support clients and help employers accommodate them. That's because many of the symptoms resemble conditions we've dealt with before, including chronic fatigue syndrome, depression and anxiety and post-stroke impairment.

But we're all still learning. The Commission's promise is this: We'll continue to make resources available to help you better support clients with PASC and other COVID-related conditions, including PTSD. Below, are several resources that were presented during the webinar. If you know of other resources you'd like to share, please let us know. We want to hear from you; we're here to help.

[1] Sudre, C.H., Murray, B., Varsavsky, T. et al. Attributes and predictors of long COVID. *Nat Med* 27, 626–631 (2021). <https://doi.org/10.1038/s41591-021-01292-y>

[2] MI CReSS Data Reports. "Michigan COVID-19 Recovery Surveillance Study. Data Report 2: Black-White Differences in Access to Care, Recovery, and the Social Impact of COVID19." University of Michigan School of Public Health January 2021 <https://sph.umich.edu/mi-cress/reports.html>

[3] "A Detailed Study of Patients with Long-Haul COVID - An Analysis of Private Healthcare Claims" FAIR Health, Inc. <https://www.fairhealth.org/publications/whitepapers>

[4] <https://www.statnews.com/2021/09/01/vaccination-reduces-risk-long-covid-..>

VALIR™

Physical Therapy

With 18 clinics in the OKC metro and surrounding areas, Valir Physical Therapy is in your community. We pride ourselves in creating unique programs for each patient's rehabilitation, providing encouragement and education each step of the way.



iWound

www.iwound.ca



All-In-One Mobile Wound Care SOLUTION

"Transforming How and Where We Heal"





SENIOR CARE ONLY BETTER

Helping Seniors Age in Place Successfully Throughout the Greater Oklahoma City Metro and Surrounding Areas!

At Senior Helpers, our personalized in-home care plans are created after our complimentary, no obligation initial assessment with clients and family members. Our care professionals then provide customized support to help our seniors stay happy, safe, and independent, whether that's just a few hours a day or 24/7 care.

As experts in senior care, we are here for you during these uncertain times.

Our RN-Supervised Care Teams provide:

- Companionship and personal care
- Assistance around the home and with transportation
- Industry-leading Alzheimer's, dementia and Parkinson's care
- Surgery assistance and hospital sitter services
- Proprietary **LIFE Profile™ Risk Analysis** uses a consistent, data-driven approach to identify and address the concerns most important for successful aging
- **Wellness Watch™** weekly check-ins via phone or visit
- **Staying Home Safe™** post-acute or post-rehab recovery care *specifically* designed to help prevent readmission
- Company employed caregivers who are expertly trained, background-screened, bonded and insured

We are honored to be **GREAT PLACE TO WORK** certified and a member of the **MILITARY SPOUSE EMPLOYMENT PARTNERSHIP**.

24/7 telephone access to owners. No fixed term contract for care. Veterans' Benefits Approved Provider. Existing relationships with major LTC insurance providers.

**SENIOR
Helpers®**

Care and comfort at a moment's notice.

Please call for a complimentary, no obligation in-home care consultation.

405.608.4339 | seniorhelpers.com/ok/greater-oklahoma-city

State of Oklahoma Home Care Agency License #HC8055

All rights reserved. Senior Helpers locations are independently owned and operated. ©2022 SH Franchising, LLC.



Making Sense of Senior Care Options Since 2014



Are you confused and overwhelmed by senior care options? Don't know where to start in seeking residential senior care? Wondering about the different types of care and the cost? **Senior Care Referral Services of Oklahoma** can help!

Rick & Denise Guttenberger established Senior Care Referral Services to help families navigate the often complex network of senior care options available in the greater Oklahoma City area. At **no cost to families**, the Guttenbergers help those considering independent living, assisted living, memory care, long term care or home health care find the best solution for their specific situation.

Senior Care Referral Services of Oklahoma helps families answer these questions:

- **Where do I even begin?**
- **What is the difference between independent living, assisted living, memory care and long term care?**
- **How much does all of this cost?**
- **Is there financial help for veterans and their spouses?**
- **My loved one experiences some confusion – do they need memory care?**
- **What are the best communities for my need and situation?**

Serving families from Guthrie to Norman, Mustang/Yukon to Shawnee, Senior Care Referral Services works directly with families to provide the best answers to senior care needs - all at no cost! Our staff has visited and toured every community that we recommend in the greater Oklahoma City area. "We have



taken the tours, talked to the directors, met with the marketing teams and looked at the reviews. We feel confident that any place we take a family is a place we would take our own," says Rick Guttenberger.

Helping seniors and their families find care solutions at no cost is what we do for clients. No matter how tough the request or situation, Rick and Denise will do whatever they can to help. "It is a privilege to work with families and help them find peace of mind by simplifying their search for answers," says Denise.

To find out more information, visit www.seniorlivingok.com or call **405-509-6311**.



**Brookhaven
NeuroRehabilitation
Network**
building a new future

BNN specializes in treating adults living with brain injury who have developed behavioral, psychiatric, and/or substance use issues that have become unmanageable in the environment they live in. A highly individualized treatment program is tailored to each individual with the goal of restoring the highest level of independence possible. The BNN continuum of care for TBI neurocognitive rehabilitation spans from an inpatient hospital setting, to a TBI behavior specific community setting , to independent community support.

Aggression, anger and self-control issues are common among adults with brain injury and can impede rehabilitation if not treated professionally. Other common sequelae include: self-injury, impaired judgement and problem-solving due to cognitive deficits, frequent agitation, prolonged confused state, seizure disorders related to, problems with attention, and information processing, significant memory and cognitive deficits, disruption of sleep/wake cycles, emergence of mental health issues or exacerbation of pre-existing mental health or substance use issues, other cognitive and behavioral problems with prevent the successful completion of traditional rehabilitation programs.

The neurological team at BNN understands both the physical and behavioral complications of a TBI. That is why we created a highly personalized program for victims of severe brain injuries with physical, emotional, cognitive and behavioral deficits. This comprehensive program spans a continuum of settings including a secure inpatient facility with a step-down unit, and community based residential programs.

Neurocognitive Rehabilitation Treatment Services		
Brookhaven Hospital	Community Neuro Rehab	
<ul style="list-style-type: none"> Specialized Physician Services High Level Nursing & Behavioral Supervision Medication Management Neuropsychology Physical/Occupational/Speech Therapies Cognitive & Behavioral Therapies Recreational & Vocational Therapies Social Re-entry Support Services 	<ul style="list-style-type: none"> Sobriety Support for Substance Use Self-advocacy and daily living skills development Structured community activities w/ transportation Reinforcement of PT/OT/Speech Therapy Goals Health & Wellness Management (diet/nutrition/exercise) Coordination of Medical, Dental, other Services 	<ul style="list-style-type: none"> Transitional Support to Home & Community Education of Family, Providers, and Support Systems Assistance w/ pursuit of education & employment



201 S Garnett Road, Tulsa, Ok 74128
(918)438-4257 / www.traumaticbraininjury.net





SAVE THE DATE

CERTIFICATION360 WORKSHOP

SEPTEMBER 23RD & 24TH, 2022

TIME: 7:30 AM – 4:30 PM

Hosted By: Hanger Clinic
4207 W Memorial
Oklahoma City 73134



Host & Lunch Sponsor



Sept 23rd Breakfast &
Break Sponsor

Online Registration Coming Soon
From CCMC

Hotel: Residence Inn
13900 McAuley Boulevard
Oklahoma City, Oklahoma 73134
\$99.00++ - \$109.00++ King Suite

ONLINE Reservations

More Information to follow
www.cmsa-ok.org



Two-Day Immersion

This is the ONLY CCMC Workshop offered By the Commission for Case Management Certification scheduled in Oklahoma.

Why Choose to Attend Our Certification 360™ Workshop?

This immersive educational workshop is the fastest and most cost-effective way case managers can:

Prepare — Fill your knowledge gaps at the only official CCMC workshop.

Refresh — Virtually interact with case management leaders and boost your practice.

Rejuvenate — Breathe life into your organization's training efforts.

Discover — Trends and industry insight, plus tips and resources to use today as you prepare for certification.

Cost: \$450.00 per person – limited seating

Includes:

- Authorized full workbook with slides
- Reference resources
- 1 yr subscription to the Case Management Body of Knowledge (CMBOK), an online reference book
- Limited access – 1 week practice exam that is the same platform of current certification test
- CEUs
- Morning Coffee, Juice & pastries
- Lunch both days
- Breaks & Snacks



Commission for Case Manager Certification

We've Got You Covered!

No, not a covered wagon! We're talking about the services offered by Norman Regional's Ortho Central and Wound Care clinics.



**ORTHO
CENTRAL**

405.360.6764

Midwest City
1624 Midtown Pl., Suite A
Midwest City, OK 73130

Norman
3400 W. Tecumseh Rd., Suite 101
Norman, OK 73072

With locations conveniently nestled in Midwest City and Norman, our five orthopedic surgeons, two sports medicine physicians, bone health experts, physical therapists and workers compensation specialists are more than equipped to get you back in the saddle when your orthopedic issues are slowing you down!

Some of our surgeons' specialties include:

- Arthroscopic surgery
- Carpal tunnel surgery
- Cartilage restoration
- Reconstructive surgery of the foot and ankle
- Robotic-assisted total knee replacement
- Rotator cuff repair
- Surgical fracture care
- Total hip replacement
- Total shoulder replacement



**NORMAN
REGIONAL**
Oklahoma Wound Center

405.307.6955

Oklahoma Wound Center
3500 HealthPlex Pkwy., Suite 102
Norman, OK 73072

The Oklahoma Wound Center is dedicated to the support and treatment of patients with chronic, non-healing wounds. Our team of experts include board-certified physicians, experienced wound care nurses and certified hyperbaric specialists that can get you fixed right up when you're feeling blue.

The Oklahoma Wound Center offers:

- Comprehensive care
- Patient and family education about their wound treatments
- Circulation screening tests
- Specialized dressings including negative pressure therapy, total contact castings, biologic alternative tissue applications, and compression wraps
- Hyperbaric Oxygen Therapy
- Diabetic Limb Salvage



**NORMAN
REGIONAL**
Health System



NormanRegional.com



Create
joy one
moment
at a time.

Brookdale Ada

Assisted Living
801 South Stadium Drive
Ada, OK 74820

Brookdale Bartlesville North

Assisted Living
5420 South East Adams Blvd.
Bartlesville, OK 74006

Brookdale Bartlesville South

Assisted Living
3737 South East Camelot Drive
Bartlesville, OK 74006

Brookdale Broken Arrow

Assisted Living
Alzheimer's & Dementia Care
4001 South Aspen Ave.
Broken Arrow, OK 74011

Brookdale Chickasha

Assisted Living
801 West Country Club Road
Chickasha, OK 73018

Brookdale Claremore

Assisted Living
Alzheimer's & Dementia Care
1605 North Highway 88
Claremore, OK 74017

Brookdale Durant

Assisted Living
116 West Danforth Road
Edmond, OK 73003

Brookdale Edmond Danforth

Assisted Living
1500 North 19th Ave.
Durant, OK 73003

Brookdale Edmond Santa Fe

Assisted Living
1500 North Santa Fe Ave.
Edmond, OK 74701

Brookdale Enid

Assisted Living
4613 West Willow Road
Enid, OK 73703

Brookdale Norman

Assisted Living
1701 East Alameda Street
Norman, OK 73071

Brookdale Oklahoma City Southwest

Alzheimer's & Dementia Care
10001 South May Ave.
Oklahoma City, OK 73159

Brookdale Owasso

Assisted Living
12807 East 86th Place North
North Owasso, OK 74055

Brookdale Shawnee

Assisted Living
3947 North Kickapoo Ave.
Shawnee, OK 74804

Brookdale Stillwater

Assisted Living
1616 East McElroy Road
Stillwater, OK 74075

Brookdale Tulsa

71st and Sheridan
Alzheimer's & Dementia Care
6022 East 71st Street
Tulsa, OK 74136

Brookdale Tulsa South

Assisted Living
8231 South Mingo Road
Tulsa, OK 74133

Brookdale Weatherford

Assisted Living
800 Gartrell Place
Weatherford, OK 73096

► For more information, call (844) 861-2053.



487601.JM

**#1 in Customer Satisfaction with Assisted
Living/Memory Care Communities**

Tied in 2020. For J.D. Power 2020 award information, visit jdpower.com/awards

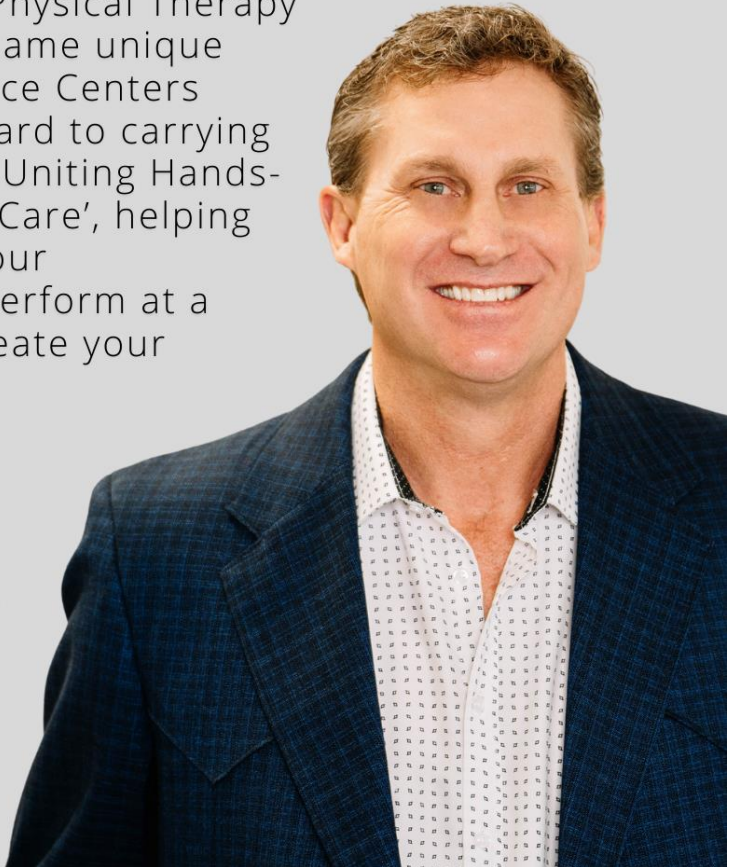
©2021 Brookdale Senior Living Inc. All rights reserved. BROOKDALE
SENIOR LIVING is a registered trademark of Brookdale Senior Living Inc. 

 **BROOKDALE**
SENIOR LIVING
brookdale.com



TAYLOR **PHYSICAL THERAPY**

I am proud to showcase Taylor Physical Therapy to Oklahomans. I will bring the same unique qualities that Human Performance Centers were well known for. I look forward to carrying on what we started years ago - 'Uniting Hands-on Therapies with Personalized Care', helping you function pain free, regain your independence, and ultimately, perform at a higher level. Let me help you create your comeback story!



All insurances accepted including Medicare, Medicaid, MVA's & Worker's Compensation

 (405) 286.1170

 CONTACT@TPTPLLC.COM

2022 CONFERENCE EXHIBITORS

abbvie



Access MEDICAL CENTERS
URGENT CARE

ANGEL FLIGHT



ArchWell HEALTH

AVEM HEALTH PARTNERS



CaptionCall
Life is Calling



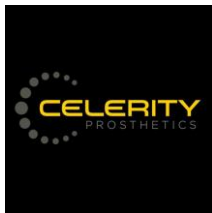
Brookhaven NeuroRehabilitation Network
building a new future

BROOKDALE SENIOR LIVING



CLINICAL PATHOLOGY LABORATORIES
A Sonic Healthcare Company

CNS CENTRE FOR NEURO SKILLS®
NEUROSKILLS.COM



CORNERSTONE SPECIALTY HOSPITALS
SHAWNEE



Diakon Group

Elara Caring
We care where you are.

Hanger CLINIC
Empowering Human Potential

HEALTHBACK®
HOME HEALTH



HOME CARE ASSISTANCE



HOMELINK

HOMESTEAD ASSISTED LIVING & MEMORY CARE
A Member of the Midwest Health Family

HPI COMMUNITY HOSPITAL
INTEGRIS HEALTH

INTEGRIS HEALTH



LAURA LYNN'S HOME CARE
from our to your home

McBRIDE ORTHOPEDIC HOSPITAL

MEMS MILLER EMERGENCY MEDICAL SERVICES
Proudly serving Oklahoma since 2006.



LET'S GET *moving*



Meet Our Hand Therapy Team!



Select Physical Therapy's hand therapy program focuses on the rehabilitation of the hand and upper limbs. It is the merging of occupational therapy and physical therapy theory and practice. Several of our highly skilled physical and occupational therapists go on to become certified hand therapists and are proficient in the treatment of hand and upper extremity pathologies, from the acute to the chronic.

Center	Phone	Fax	Specialty Clinician
Moore 1634 SW 122nd Street	405.692.2366	405.692.2337	James Richardson, P.T., DPT, CHT Robert Kopecky, PTA
Bethany 6729 NW 39th Expressway, Sawyer Center	405.981.4001	405.981.4002	Cathy Chandler, O.T. Kara Roy, COTA
Midwest City 351 North Air Depot Boulevard, Suite X	405.732.1766	405.732.4337	Tracy Allard, O.T., CHT Shelly Waddle, COTA
East Edmond 101 South Saints Boulevard, Suite 116	405.359.1664	405.350.2003	Cathy Chandler, O.T.
N. OKC 200 NW 66th Street, Suite 900	405.840.1957	405.840.1052	Patti Taylor, P.T., CHT Andrea Goad, O.T., CHT Jennifer Frias, COTA
Tulsa- Utica 1623 South Utica Avenue	918.982.6800	918.743.6109	Lisa Rhinehart, O.T., CHT
East Tulsa- Broken Arrow 12221 East 51st Street, Suite A	918.249.0623	918.249.0627	Kathryn Castellow, P.T., CHT
South Tulsa-Bixby 11055 South Memorial Road	918.369.3350	918.369.3358	Kathryn Castellow, P.T., CHT
Stillwater 2230 North Perkins Road	405.780.9919	405.780.9920	Pam Jinks, O.T., CHT
Lawton 1401 SW Park Ridge Boulevard, Suite A	580.730.8015	580.730.8016	Stacey McGlory, P.T., CHT

For more information or to request an appointment, please contact us today!

CONNECT



SELECTPHYSICALTHERAPY.COM

2022 CMSA-OK Professional Service Directory



Natalie Teeter
Business Development Manager
Cell Phone – 405.432.6002
nteeter@hanger.com
Oklahoma City, OK 73134
www.HangerClinic.com



For specialist information visit our website.
www.OSSO network.com
Or contact Robert Fuxa at 405-474-5050



Laurie Stansbury
Senior Helpers of Greater Oklahoma City
10605 N. May Avenue
Oklahoma City, Oklahoma 73120
lstansbury@seniorhelpers.com
405 608 4339
www.seniorhelpers.com/ok/greater-oklahoma-city



Maria Davidson
Select Physical Therapy
200 NW 66th St, Ste. 900
OKC, OK 73116
madavidson@selectmedical.com
www.selectphysicaltherapy.com
Cell: 214.799.4804



Randy Hulin - Regional Account Manager
Cell 405-570-2829
800.654.2185 Ext. 861
VRCinvestigations.com





Scott Eaton Meyers
Bausch Health
8515 Fairway Trail Dr
Boerne, TX 78015-4930
(210) 363-3936
scott.meyers@bauschhealth.com



Laura Lynn's Home Care
9801 N May Ave
Oklahoma City, OK 73120-2737
Courtney L. Steward
courtnys@llhcokc.com



Sara Forrest | Director of Provider Relations
Cohesive Healthcare Management & Consulting
Cell: 405.513.2299
Fax: 888-974-1089
sara@cohesivehealthcare.net
Cohesivehealthcare.net

BROOKDALE
SENIOR LIVING

Brookdale Senior Living
116 W. Danforth Road
Edmond, OK 73003
Cell: 405-204-9884
Jeff Dickinson
jdickinson@brookdale.com




REDBUD
PHYSICAL THERAPY

Redbud Physical Therapy
4008 S. Yale Ave.
Tulsa, OK 74135
Cell: 918-402-1977
Debbie Mason
debbie.mason@redbudpt.com




**ORTHO
CENTRAL**

Norman Regional
Ortho Central/Wound Care
3400 W Tecumseh Road
Norman, OK 73072
Tish Marshall
405-801-4228
tmarshall@nrh-ok.com




Senior Care
Referral Services
of Oklahoma

Senior Care Referral
Services of Oklahoma
Rick and Denise Guttenberger, Partners
3000 W Memorial Rd, Suite 123-130
Oklahoma City, OK 73120
Becky Grantham
Director of Business Development
becky@scrs-ok.com
405-509-6311 (office)
405-821-5849 (cell)




HOMELINK

HOMELINK
1111 West San Marnan Drive
Waterloo, IOWA 50701
800-484-1993
Sonja Thomas
sonja.thomas@vgm.com




MCBRIDE
ORTHOPEDIC HOSPITAL

McBride Orthopedic Hospital
9600 Broadway Extension
Oklahoma City, OK 7311
LaDonna Siler
405.230.9237
lsiler@mcbh.com




**T E X A S
NeuroRehab
C E N T E R**

Texas NeuroRehab Center
1106 W Dittmar Road
Austin, Texas 78745
Tes Palin, RN, Director of Business
Development
tes.palin@uhsinc.com




**CLINICAL PATHOLOGY
LABORATORIES**
A Sonic Healthcare Company

Clinical Pathologies Laboratories
4815 S. Harvard, Suite 128
Tulsa, OK 74135
Mike Metevelis
918-886-5136
mmetevelis@cpllabs.com



Valir Physical Therapy
700 NW 7th Street
Oklahoma City, OK 73102
405-850-3504
Kay Sanner
Kay.sanner@valir.com
Kelly Eggar
kelly.eggar@valir.com



Brookhaven NeuroRehabilitation Network
201 S Garnett Road
Tulsa, OK 74128
918-438-4257
Debbie Spaeth, Brain Injury Case Manager
dspaeth@brookhavenhospital.com
<https://traumaticbraininjury.net/>



Home Care Assistance
323 S. Blackwelder Ave.
Edmond, OK 73034
Melissa Hill
405-285-4191
mhill@homecareassistance.com



Norman Regional - Ortho Central/Wound Care
3400 W Tecumseh Road
Norman, OK 73072
405-801-4228
Tish Marshall
tmarshall@nrh-ok.com



April Garcia RN, Territory Manager
Cell: 405.590.7520
Fax: 405.787.6018
5924 NW 2nd St suite 100
Oklahoma City, OK 73127
April.Garcia@coramhc.com



Taylor Physical Therapy
9300 N. Kelley Ave. Ste 3
Oklahoma City, OK 73131
Beth Taylor
405-286-1170
contact@tptpllc.com



Miller EMS
9300 N. Kelley Ave. Ste 3
Oklahoma City, OK 73131
Beth Taylor
405-286-1170
contact@tptpllc.com



Will you be joining next?
Ask for details!
director@cmsa-ok.org