

*Some of the antique / vintage radios in the K9STH collection.*



*Atwater Kent Model "L" horn speaker 1924*



*Atwater Kent Model 35 1926*



*Atwater Kent Model 46 1926*



*Atwater Kent Model 30 1926*



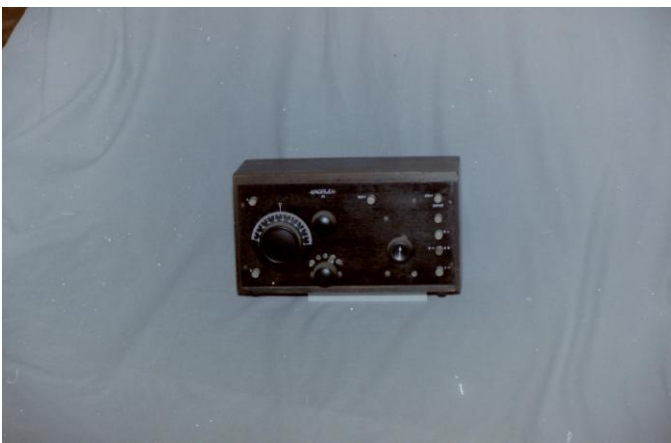
*Crosley 5-38 1926*



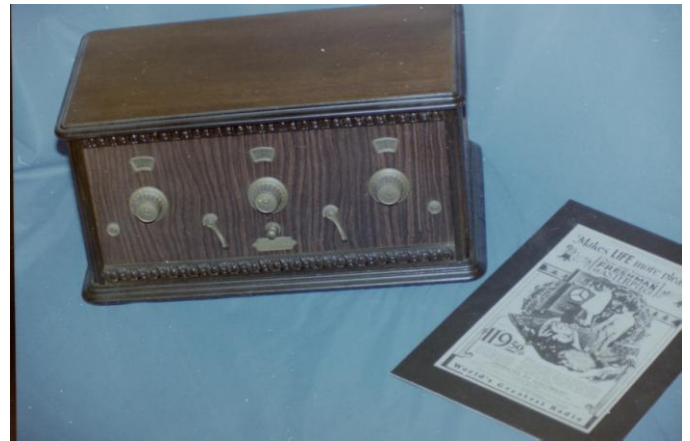
*Crosley "Fiver" 1939*



*Delco 1940*



*Crosley 51 1923*



*Freshman Masterpiece (1<sup>st</sup> version) 1924*



*Cummings Solodyne 1927*



*Grebe MU-1 1925*





*General Electric S-22 1932*



*Howard 1931*



*Graybar 550 1927*



*Mengel M.R. 101 "Etherion" 1922*



*Peer Superheterodyne 1933*



*Philco 1939*



*Radiola III 1923*



*Philco Farm/Windcharger 1934*



*Radiola 18 1926*





*Stromberg-Carlson Intercom 1937*



*Zenith AM/FM 1947*



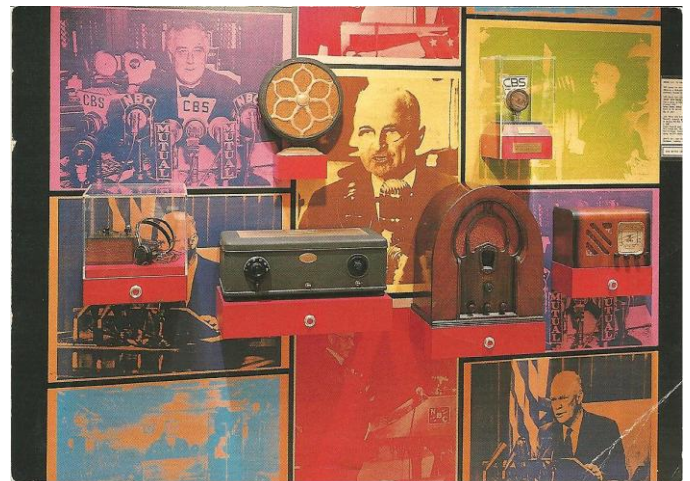
*Silvertone (Sears Roebuck) 1947*



*Aerola Senior 1922*



*Silvertone (Sears Roebuck) Mantle Set 1933*



*Radio display at the Lyndon Baynes Johnson Presidential Library in Austin, Texas. The crystal set, headphones, Atwater Kent Model 44, and the round speaker (left hand side of the photo) were furnished by K9STH*