

I am trying to identify a receiver that I obtained a very short time ago. Anyone who has any real information please contact me at the following E-Mail address (this is NOT a “clickable” link):

k9sth@sbcglobal.net

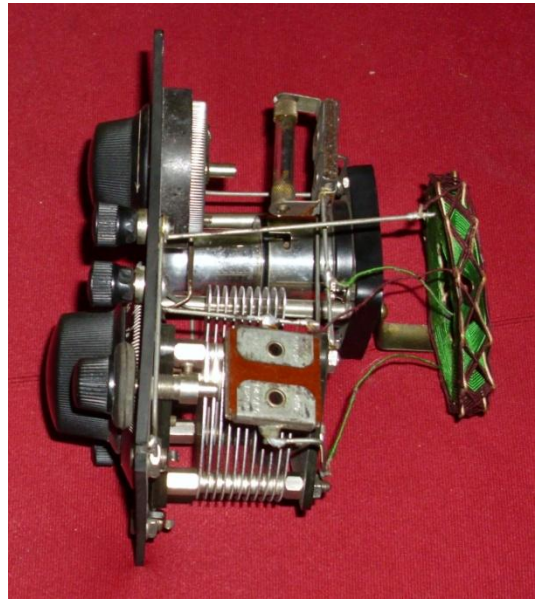
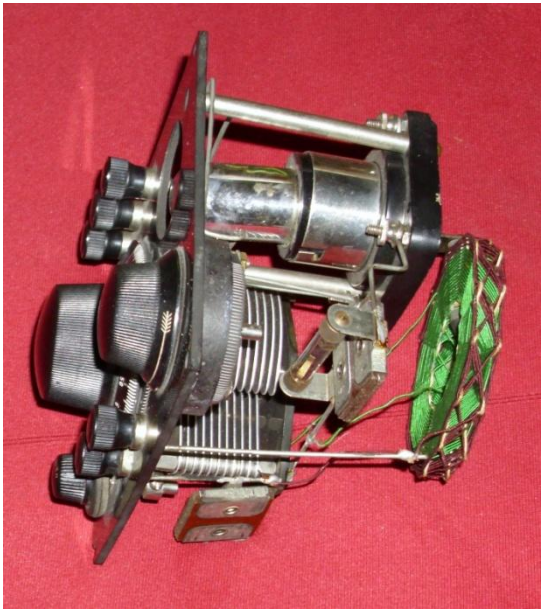
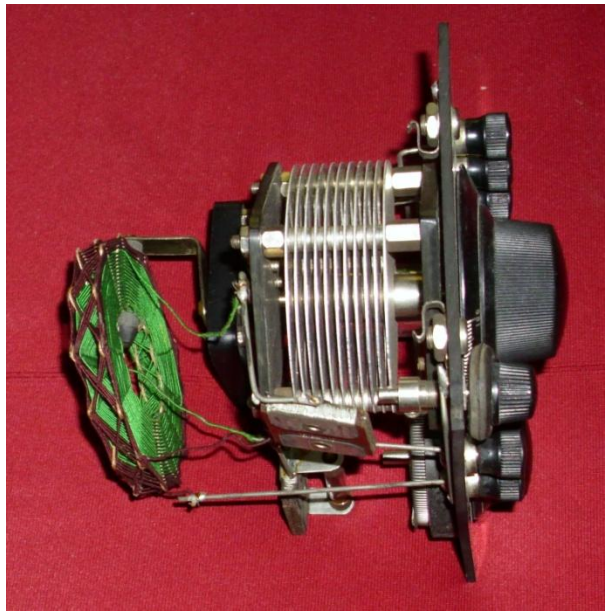
The receiver uses a Sylvania UV—199 tube and is in like new condition except for the leather handle (it shows many decades of age) and the corrosion, discoloration on the hardware. There is no identification anywhere on the panel or on the cabinet. This receiver may have been a kit. But, if a kit, the wiring was done by an expert! It looks more like a factory built unit because of the quality of the wiring.

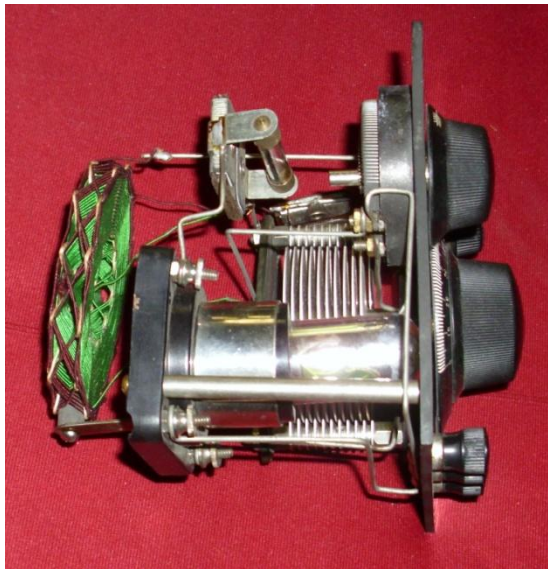
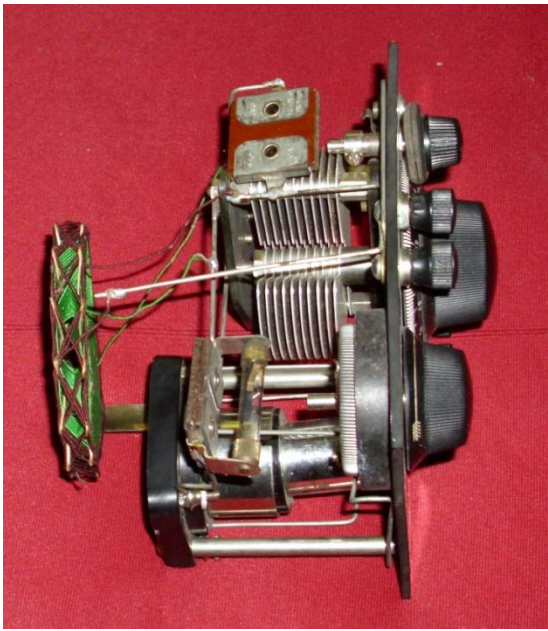
The antenna was loose when I obtained the receiver. I attached it to the only machine screw to which the bracket would reach. There were several machine screws loose (in the bottom of the cabinet) as well as knurled knobs. Where each went was obvious.

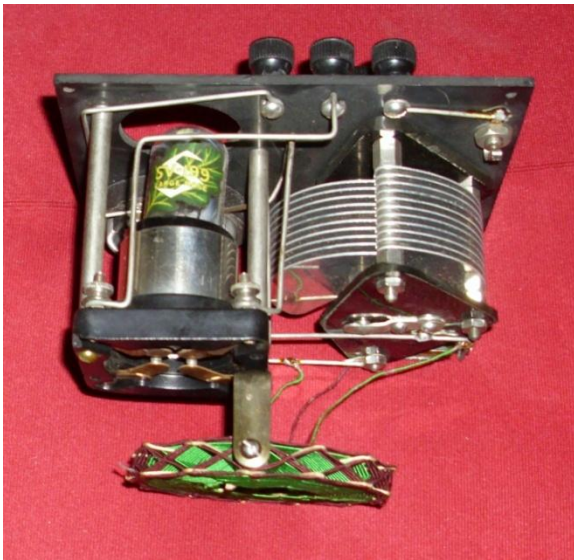
One corner of the panel is broken and repairing that slight deficiency will be a real pain in the posterior! The headphones, that came with the receiver, are of the 1920s type.

Here are photographs of the receiver taken at every angle possible.







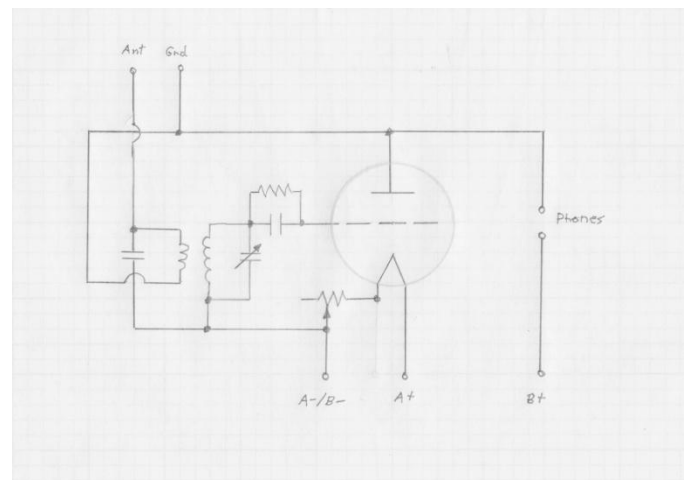


Again, anyone who might have a clue as to the identification as to the manufacturer of this receiver or the manufacturer of the kit if the unit was "kit built" would be greatly appreciated if they would E-Mail me at (this is not a "clickable" link):

k9sth@sbcglobal.net

Thank you for looking at this link.

Glen E. Zook, K9STH



Unknown Receiver Schematic