

Myers Crop INSURANCE



Deadlines to Remember

September 30th

- Wheat Sales Closing

October 15th

- Annual Forage Growing Season 1 Acreage Reporting

November 15th

- FSA Grass Certification
- Wheat Production Reporting

December 1st

- PRF Sales Closing
- FSA NAP Grass Insurance

Fall Sales Closing

The 2023 Wheat Sales Closing deadline is quickly coming to an end. Most of you have already made policy changes and coverage elections for the upcoming crop year, but September 30th is the final day to make any changes to your policy. This includes coverage level changes, new counties and adding a policy for a new person or entity. We need to know if any personal information has changed, including your address, phone number, email address, marital status, etc. It's also a critical time to notify us of any changes in your operation, like added land, new breaking land (native or expired CRP), and crop share updates.

Once you are finished planting wheat, please contact FSA about reporting acres.

PASTURE, RANGELAND AND FORAGE INSURANCE

One of the main products we offer as an agency is Pasture, Rangeland and Forage Insurance or PRF. It's an insurance program that utilizes a rainfall index developed by the NOAA Climate Prediction Center to determine deviation from normal rainfall, and does not measure production or loss of forage/grazing. This IS NOT a drought insurance. PRF coverage is based on grid location rainfall and not your individual land.

Question: When can I buy PRF?

Answer: PRF is sold annually, and the deadline to sign up for 2023 coverage is December 1, 2022.

Question: What is the basis of coverage?

Answer: You choose coverage between 70 and 90 percent of historical rainfall, which is cumulative rainfall data from 1948-2021.

Question: If it's dry, will I receive a payment?

Answer: Rainfall is measured over two-month intervals. If rainfall is below average and below your selected coverage level for that two-month interval, you will trigger a loss.

Question: Is PRF just for grazing?

Answer: No, PRF can be used for perennial hay land as well.

Question: What months can I insure?

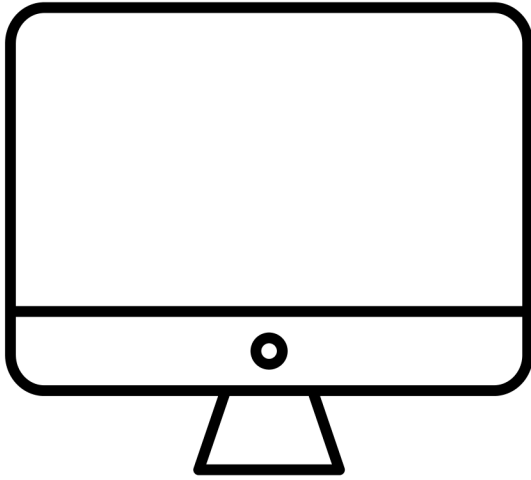
Answer: The policy is customizable, and you can select as few as two, two-month intervals or as many as six, which covers the entire year. You can stack more coverage in certain intervals if you choose. Also, you do not have to insure all acres.

Question: Have producers benefitted from PRF?

Answer: PRF is not a perfect product, but it has given ranchers and hay producers protection against deviation from normal rainfall during the year. With any area-based insurance, there will be times that portions of a grid receive rainfall, and your individual operation is dry. In other years, the reverse may happen. You may receive adequate rainfall, but other portion of the grid remain dry and a payment is triggered. We advise all customers to look at this product as a long-term investment, not a short-term solution. When analyzing the past performance of the product, PRF has been a consistent, reliable product that has returned money back to producers in times of dry conditions.

Did you know...

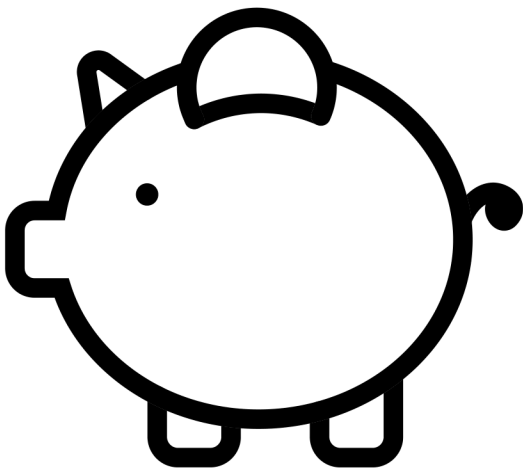
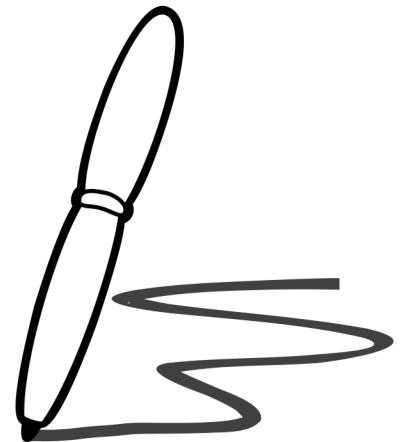
AGENCY ROOT



Did you know that we offer a producer portal through Agency Root? Within that portal you are able to access information on your policies. If you have an Annual Forage or PRF policy you are able to track grids performance and see potential payments. MPCl customers are able to see their coverages and claim information. If you are interested in getting your portal set-up, call Ashley at (806) 282-5100 and she will get the process started.

DIGITAL SIGNATURE

Did you know that you are able to sign claims from your computer or phone whenever you want? Digital Signature allows you to sign claim documents with the click of a button. You are able to do this as soon as the adjuster has all the paperwork completed. If you are interested in creating a portal, call one of us and we will get the process started.



DIRECT DEPOSIT

Did you know that you are able to receive your indemnity payment as soon as it clears audit? With direct deposit funds are deposited straight into your bank account, which helps eliminates the delay from the postal service. If you are interested in direct deposit, call one of us and we will provide you with the necessary forms.

Myers Crop Insurance
PO Box 150
Claude, TX 79019
Return Service Requested