

Flat-Flex® Metric Drive Sprockets & Blanks

Wire Belt Company offer a comprehensive range of standard sprockets and can also manufacture to order sprockets for new or replacement applications to suit any specified Flat-Flex® belt.

To suit Belt Specification		Part Number		Sprocket Details			
Pitch mm	Wire Dia. mm	Sprocket	Blank	Outside Dia. (A) mm	Root Dia. (B) mm	Bore Dia. (C) mm	No. of Teeth
4.24	0.90	05-1122	06-1123	50.80	46.99	20	34
4.30	1.00	07-1112	08-1113				
4.30	1.27						

5.64	0.90 1.00	05-2122	06-2123	50.80	45.72	20	25
		07-2112	08-2113				
		05-2522	06-2523	76.20	70.00	20	39
07-2512	08-2513						
		05-2422	06-2423			25	
		07-2412	08-2413				

6.35	0.90 1.00 1.27	05-3122	06-3123	50.80	44.19	20	22
		07-3112	08-3113				
		05-3222	06-2223	76.20	71.12	20	35
07-3212	08-2213						
		05-3322	06-2323			25	
		07-3312	08-2313				

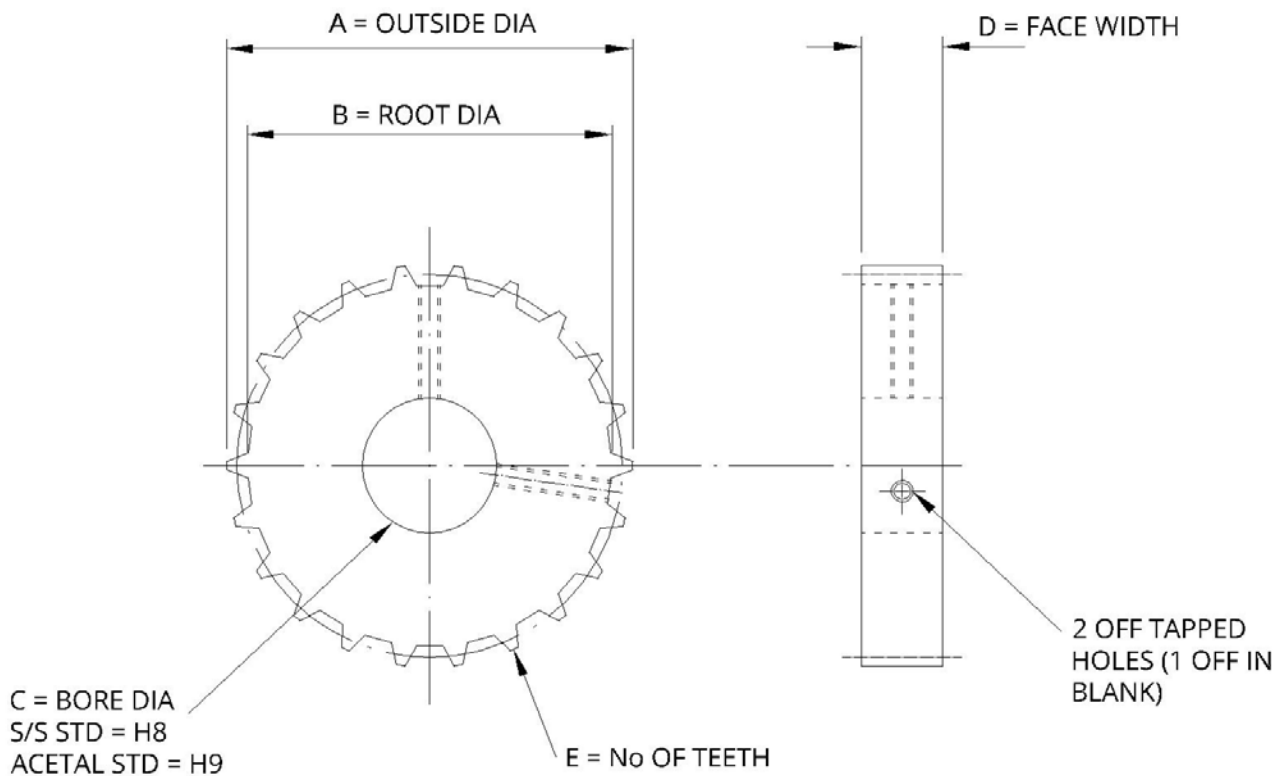
6.4	1.40	05-9818	06-9184	50.80	45.19	25	22
		07-9818	08-9819				
		05-8760	06-8761	74.85	69.77	25	34
		07-8760	08-8761				

7.26	1.27 1.60	05-4122	06-4123	31.75	27.43	16	12
		07-4112	08-4113				
		05-4222	06-2123	50.80	45.72	20	20
07-4212	08-2113						
		05-4322	06-4323			25	
		07-4312	08-4313				

To suit Belt Specification		Part Number		Sprocket Details			
Pitch mm	Wire Dia. mm	Sprocket	Blank	Outside Dia. (A) mm	Root Dia. (B) mm	Bore Dia. (C) mm	No. of Teeth
7.26	1.27 1.60	05-4422 07-4412	06-4423 08-4413	57.15	50.80	20	22
		05-4522 07-4512	06-4523 08-4513	76.20	68.58	20	29
		05-4622 07-4612	06-4623 08-4613			25	
9.00	1.83	05-9242 07-9242	06-9367 08-9367	76.20	69.28	25	24
9.6	2.08	05-9063 07-9063	06-9078 08-9078	74.88	67.26	25	22
11.30	1.27	05-5122 07-5112	06-5123 08-5113	76.20	70.86	25	19
12.70	1.83 2.35	05-6122 07-6112	06-6123 08-6113	50.80	44.95	20	11
		05-6222 07-6212	06-6223 08-6213			25	
		05-6322 07-6312	06-6323 08-6313	76.20	68.58	20	17
		05-6422 07-6412	06-6423 08-6413			25	
20.32	2.35	05-7122 07-7112	06-7123 08-7113	76.20	65.53	20	10
		05-7222 07-7212	06-7223 08-7213			25	

Pre-fixed codes '05' & '06' are Stainless Steel, pre-fixed codes '07' & '08' are Polyoxymethylene (POM)
 Standard Face Width ('D') is 14.3mm; other widths are available on request.
 Keyways are optional.

Standard Sprocket Dimensions



Manufacturing Tolerances:

Stainless Steel:	BS 4500	1969H8
Polyoxymethylene:	BS 4500	1969H9

Sprockets are secured by two (2) socket head set screws at nominally 90°.
Blanks have a single fixing position only.

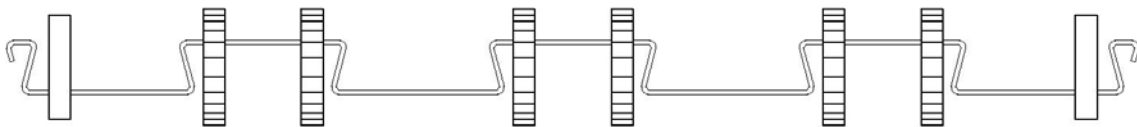
Sprocket Arrangements

Sprockets are usually placed in odd numbered spaces to allow use of splicing clips without interfering with sprockets. If clips are never used, placing sprockets in even numbered spaces ('Alternative' style) is acceptable. However you should never mix the two arrangements.

Standard



Alternative



Calculating the Number of Sprockets

The number of sprockets required to drive your belt depends on the number of spaces across the belt. Here's how to calculate it:

Belts with a single loop edge need one less sprocket than the number of belt spaces, plus two blanks.

Drive shafts for double loop edge belts should be set up 'Alternative' style.

Note: Two exceptions to these rules: A) a single space belt uses only two (2) sprockets; B) a three space belt requires four (4) drive sprockets and no blanks.

Three Space Belt Arrangement



Single Space Belt Arrangement

