

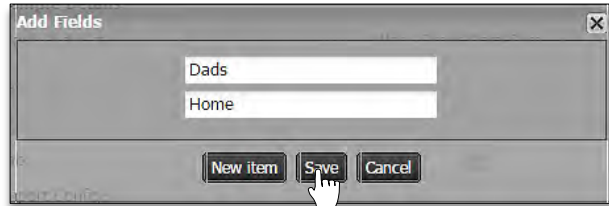
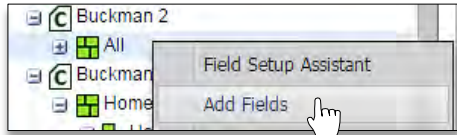
Data Upload Tab - GPS & Soil Data

The Data Upload Tab allows users to easily input GIS data, soil data, yield data, etc.

1. Uploading Data into a New Field.

A. Under a Farm, create two new fields and name them as desired.

- Right click on the Farm and select **Add Field**.
- Give the fields a name.



- Click **Save**.
- The fields will appear under the Farm.

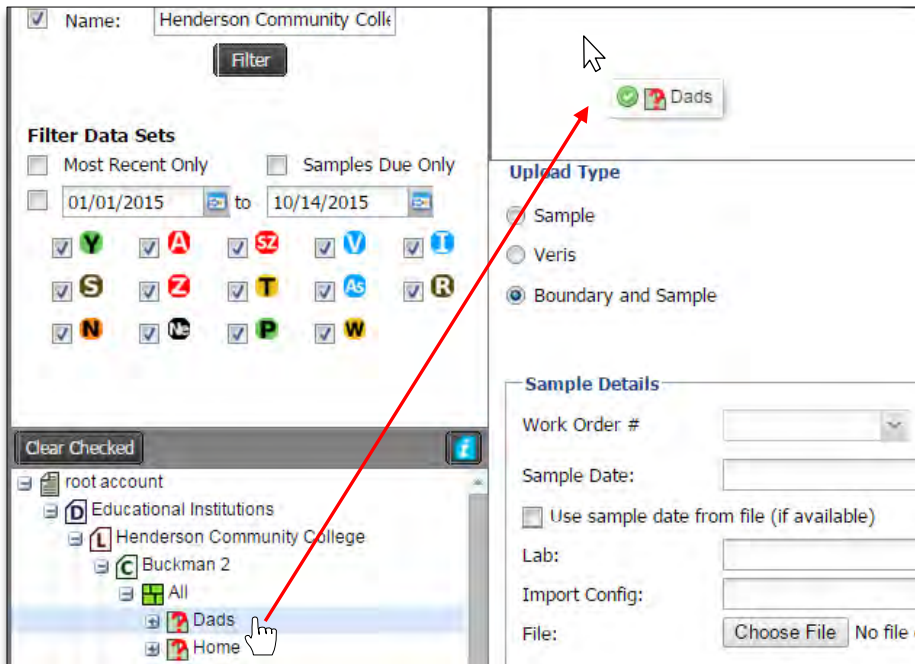


2. Select the **Data Upload** tab. The following page will display.

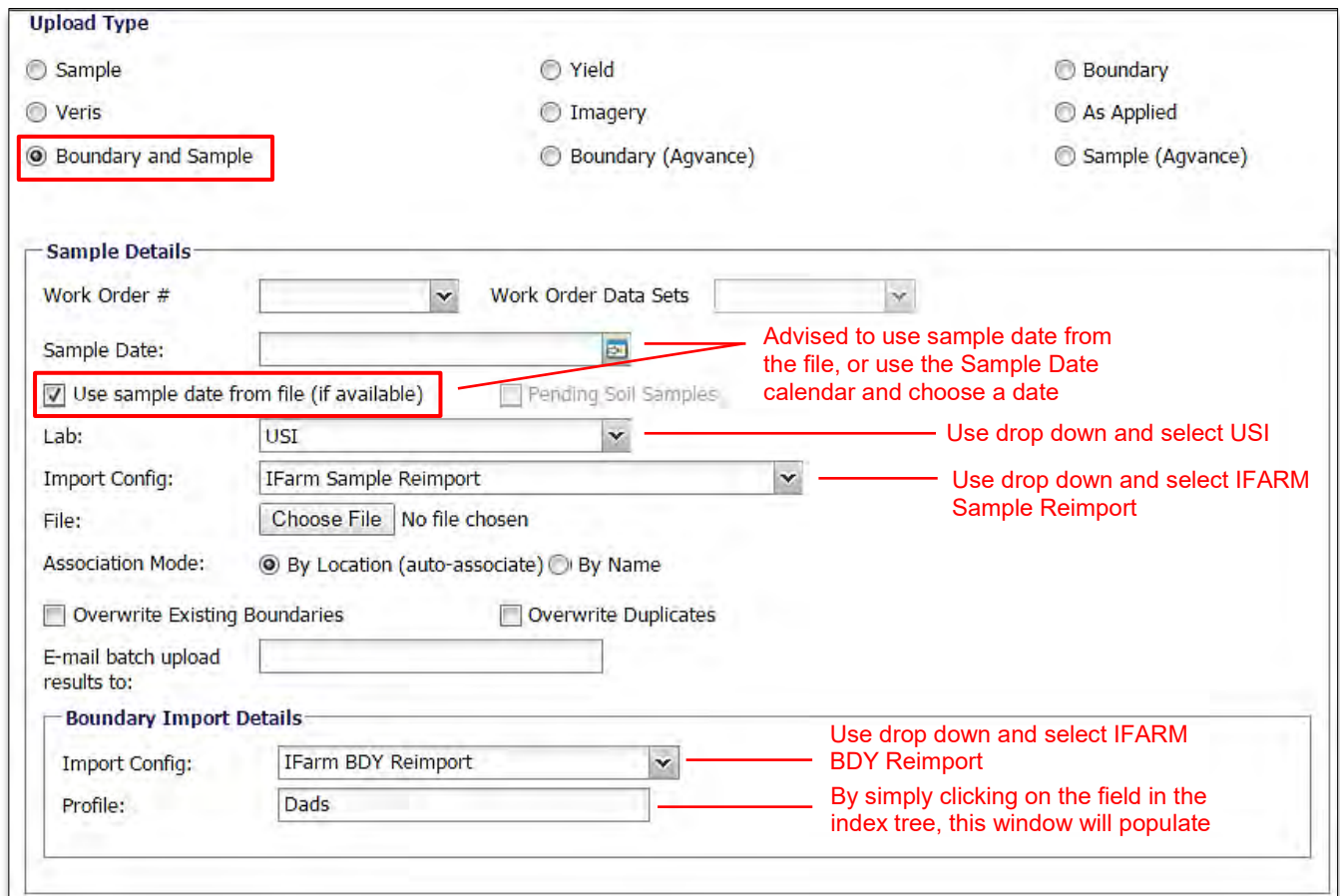
A screenshot of the 'Data Upload' tab in the software. The interface includes a top navigation bar with tabs for 'Map', 'Data', 'Spread Map', 'Data Upload', 'Data Export', 'File Upload', 'Target Samples', 'Work Orders', 'Reports', and 'Field Summary'. Below this is a 'Profiles' section with 'Remove All' and 'Remove Selected' buttons, and a table with columns for 'Account', 'Farm', and 'Field'. The main area is titled 'Upload Type' and contains several radio button options: 'Sample', 'Veris', 'Boundary and Sample' (which is selected), 'Yield', 'Imagery', 'Boundary (Agvance)', 'Boundary', 'As Applied', and 'Sample (Agvance)'. Below this is a 'Sample Details' section with fields for 'Work Order #', 'Work Order Data Sets', 'Sample Date', 'Lab', 'Import Config', 'File' (with a 'Choose File' button), 'Association Mode' (radio buttons for 'By Location (auto-associate)' and 'By Name'), 'Overwrite Existing Boundaries', 'Overwrite Duplicates', and 'E-mail batch upload results to:'. At the bottom is a 'Boundary Import Details' section with 'Import Config' and 'Profile' fields. An 'Upload' button is at the bottom left and a 'Clear Form' button is at the bottom right.

Data Upload Tab – GPS & Soil continued...

A. Drag in one of the fields into the account window.

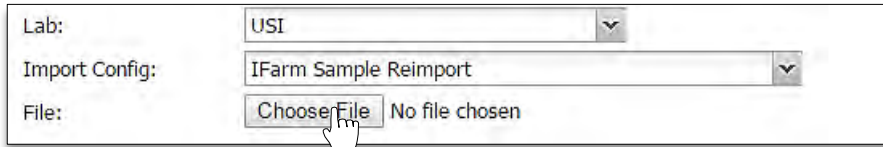


B. Once the field populates the account window, go through and set up the Upload parameters.

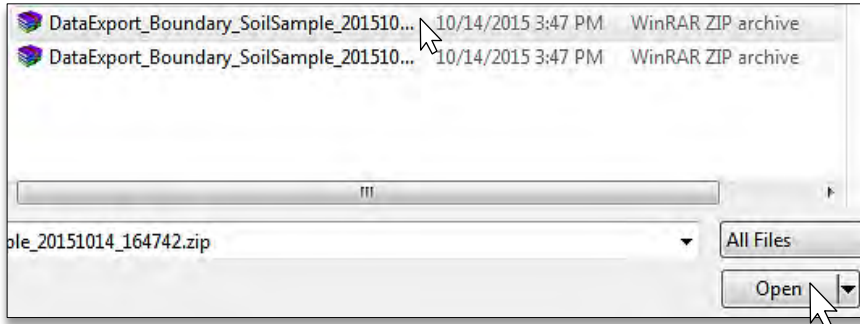


Data Upload Tab – GPS & Soil continued...

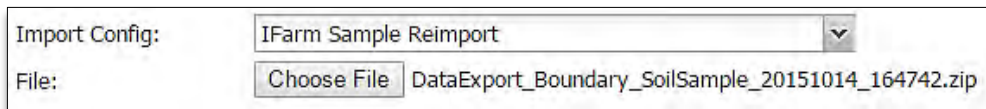
C. With all parameters chosen, go back and click on **Choose File**.



D. Browse to where a zipped folder with shape files for a boundary / points / data reside.
- Click on the zipped folder, then select **Open**.

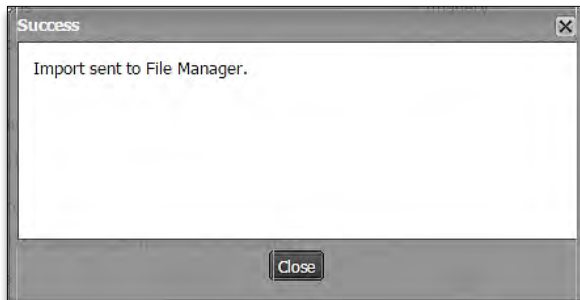
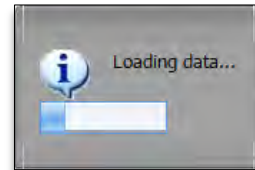


- The zipped folder will show in the Choose File window.

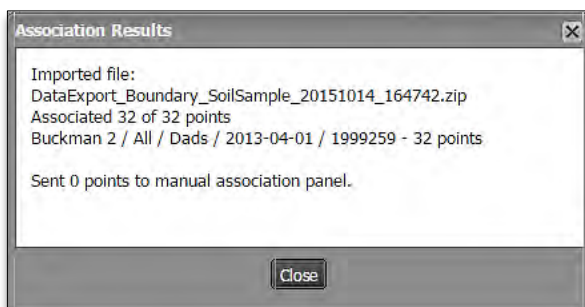


E. With everything set, go to the bottom left of the page and click on **Upload**.

- A **Loading Data** status indicator will appear briefly (right).
- A **Success** indicator will appear stating the Import was sent to the File Manager (below).



F. After a brief period, an **Association Results** notification will appear showing details of the upload.

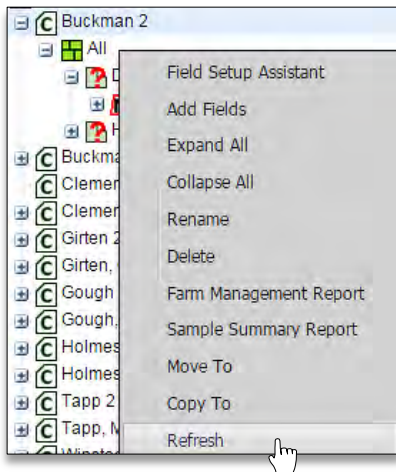


Data Upload Tab – GPS & Soil continued...

G. After a brief refresh of the data, the field will now have a GPS boundary, and the imported soil data



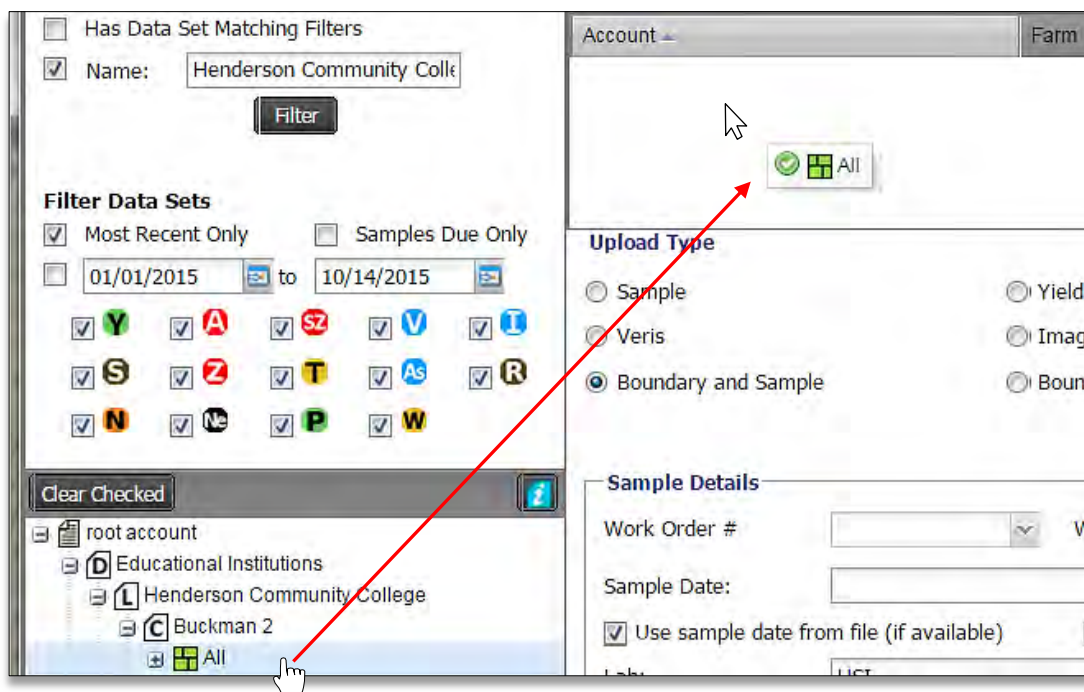
Note: If the uploaded data does not display automatically, right click on the Farm with the new fields and select **Refresh**. This will display the newly uploaded data.



H. Repeat the upload process for any other new field.

2. Uploading Multiple Fields Into a Farm (Assuming there are new fields zipped and ready to load).

A. In the Data Upload Tab, pull in a Farm into the account window.



Data Upload Tab – GPS & Soil continued...

B. Once the Farm populates the account window, go through and set up the Upload parameters.

Upload Type

Sample Yield Boundary
 Veris Imagery As Applied
 Boundary and Sample Boundary (Agvance) Sample (Agvance)

Sample Details

Work Order # [] Work Order Data Sets []

Sample Date: [] *Advised to use sample date from the file, or use the Sample Date calendar and choose a date*

Use sample date from file (if available) Pending Soil Samples

Lab: [USI] *Use drop down and select USI*

Import Config: [IFarm Sample Reimport] *Use drop down and select IFARM Sample Reimport*

File: [Choose File] DataExport_Boundary_SoilSample_20151014_173757.zip

Association Mode: By Location (auto-associate) By Name

Overwrite Existing Boundaries Overwrite Duplicates

E-mail batch upload results to: []

Boundary Import Details

Import Config: [IFarm BDY Reimport] *Use drop down and select IFARM BDY Reimport*

Profile: [All] *By simply clicking on the Farm in the index tree, this window will populate*

C. With all parameters chosen, go back and click on **Choose File**.

Lab: [USI]

Import Config: [IFarm Sample Reimport]

File: [Choose File] No file chosen

D. Browse to where a zipped folder with shape files for a boundaries / points / data reside.
 - Click on the zipped folder, then select **Open**.

DataExport_Boundary_SoilSample_20151014_164742.zip	10/14/2015 3:47 PM	WinRAR ZIP a
DataExport_Boundary_SoilSample_20151014_164753.zip	10/14/2015 3:47 PM	WinRAR ZIP a
DataExport_Boundary_SoilSample_20151014_173757.zip	10/14/2015 4:38 PM	WinRAR ZIP a

File: [DataExport_Boundary_SoilSample_20151014_173757.zip]

[All Files]

[Open]

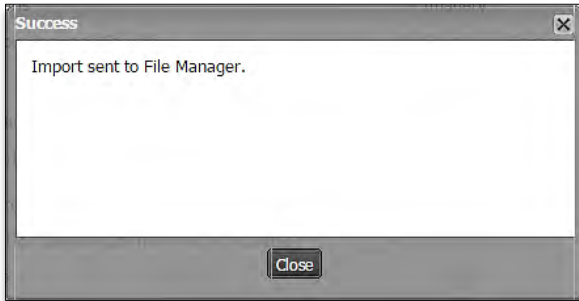
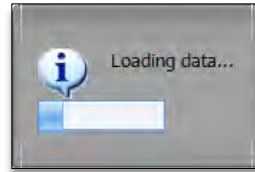
- The zipped folder will show in the Choose File window.

Import Config: [IFarm Sample Reimport]

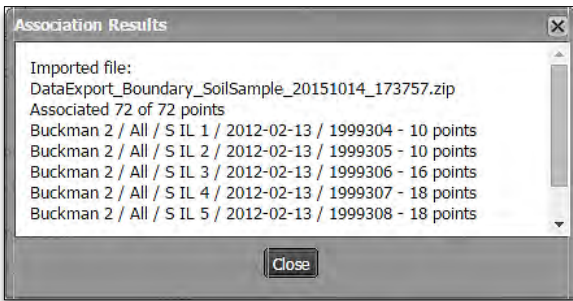
File: [Choose File] DataExport_Boundary_SoilSample_20151014_173757.zip

Data Upload Tab – GPS & Soil continued...

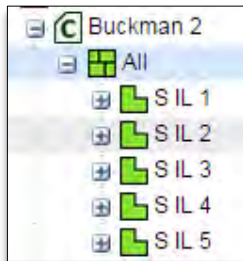
- E. With everything set, go to the bottom left of the page and click on **Upload**.
- A **Loading Data** status indicator will appear briefly (right).
 - A **Success** indicator will appear stating the Import was sent to the File Manager (below).



- F. After a brief period, an Association Results notification will appear showing details of the upload.



- After a brief refresh of the data, the field will now have a GPS boundary, and the imported soil data will be available.



Note: If the uploaded data does not display automatically, right click on the Farm with the new fields and select **Refresh**. This will display the newly uploaded data.

- G. Repeat the upload process for any other new farm / fields.
3. **Starting Over.** If you are finished with exporting for a given session and want to upload new data, simply select the **Remove All** or **Remove Selected** buttons to clear the entries. You can then drag new profiles to the Account window to start a new upload session.

