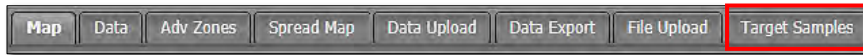


How to Create Grid Target Points

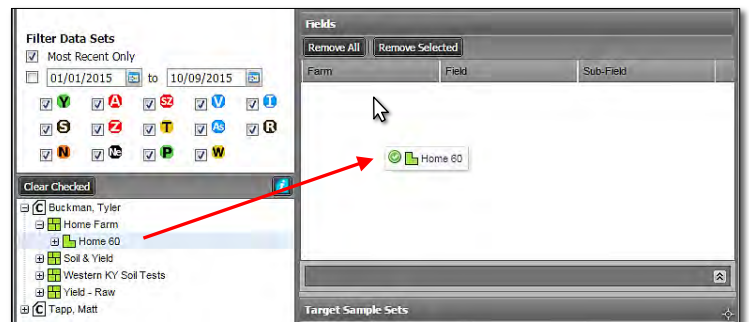
The Target Sample Tab allows users to easily create modified or new target sample points that can be exported.



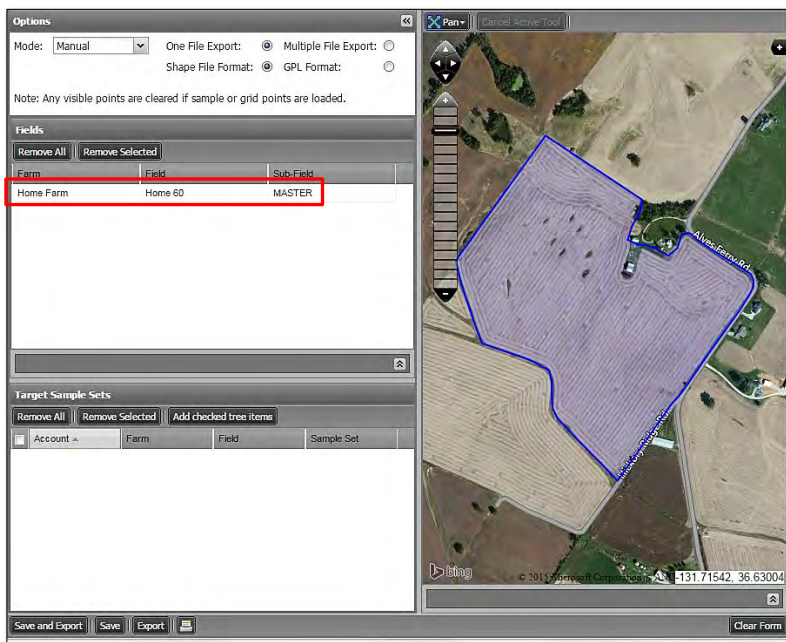
1. Select the **Target Samples** tab. The following page will display.



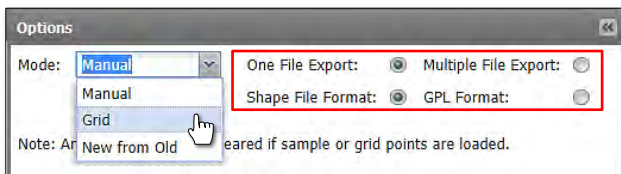
A. Click and hold a field and drag into the Fields Account window. Release the mouse to load the field.



B. The field name will populate in the account window, and the map will display.



C. Find the Options section. Click the drop-down menu and select **Grid**.

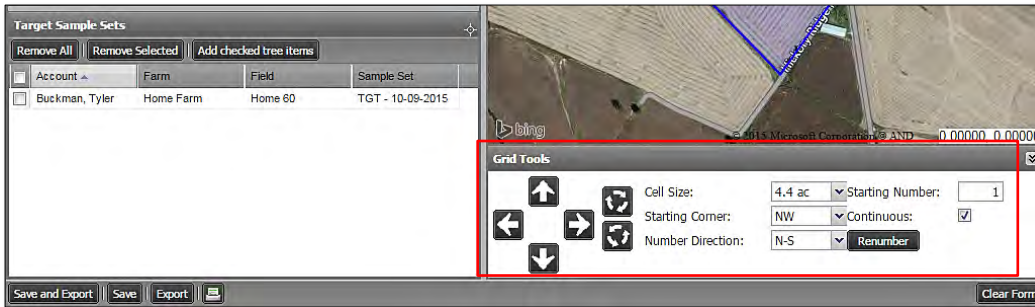


- If the target files are to be exported, note the file type options available (above). These will be created as zipped folders that will reside in the File Manager (upon export of a target file).

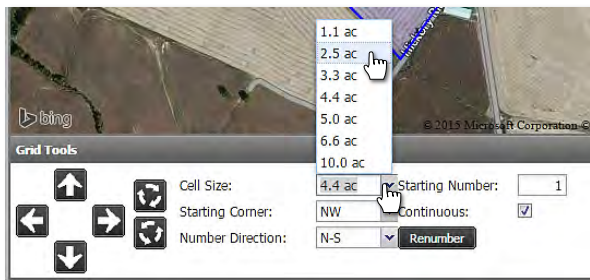
Grid Target Samples continued...

2. **Setting a Grid.** Follow these steps for creating target samples utilizing a new grid.

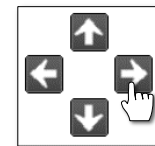
A. Once Grid is selected, note the grid tools below the map area.



B. Use the grid drop-down menu to view the grid options. Choose the required grid.



C. As soon as a grid is chosen, a set of points reflecting the grid pattern will display (below left). They will not line up perfectly in the field. Use the grid directional arrows to move / align the grid points as needed.



Note:
Each click of the arrow will move the grid incrementally in the needed direction.

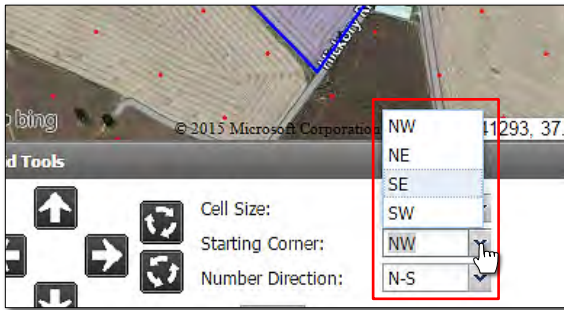
D. The Rotation options allows the grid to be incrementally angled to better fit a field. Click the needed rotation arrow until the points align themselves more effectively in the field (below right).

Note: Between use of the rotation and directional arrows, position the points as needed in the field.



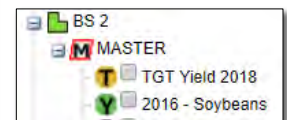
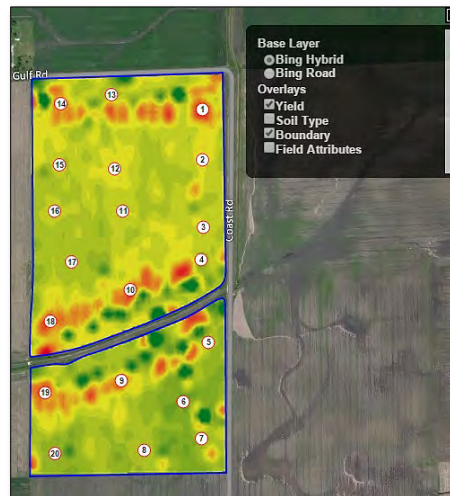
Grid Target Samples continued...

- E. There are also tools to allow the point numbers to be changed easily and quickly. Use the **Starting Corner** or **Number Direction** drop-down menus to indicate the sample number start location and directional flow of points.



3. **Data Layers:** When creating target samples, users can use different background data layers to assist in point placement. Drag points as needed to place at a point of emphasis over the data layer.

- A. Click on the black **+** to open the **Base Layer** options. Whatever types of files you have saved in your profile will be displayed as a backdrop (i.e. Yield, Soil Type, Veris, Imagery, etc.).

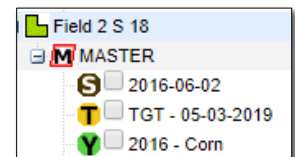


Note: Users can rename the saved target sample and indicate the layer used (yield, soil type, etc.) (above).

4. **Saving the Target File:** When finished, use one of the save options to save the created target file.

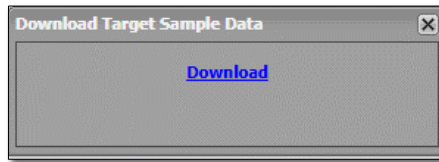
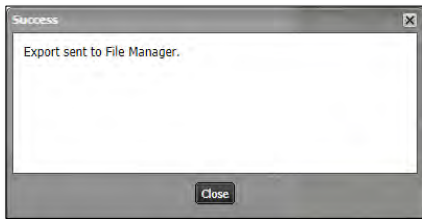


- A. If **Save** is selected, an indicator will appear stating the target points were saved successfully.
- The target file will appear under the corresponding field at a yellow **T** with the date the file was made (right).



Grid Target Samples continued...

- B.** If **Save and Export** is selected, an indicator will appear stating the target points were saved successfully.
- In addition to saving the target file under the field, a download prompt will appear. The chosen shape or GPL target file can be downloaded to your computer.



- C.** If **Export** is selected, an indicator will appear stating the target points were **Exported to the File Manager**.
- A download prompt will appear. The chosen shape or GPL target file can be downloaded to your computer.

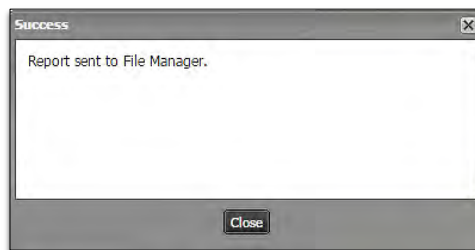
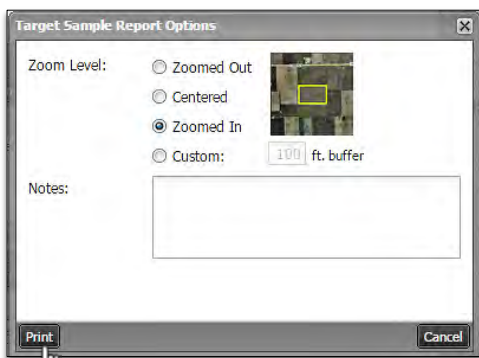
Note: When just exporting, no Target File is saved to the field. Choose Save and Export to save the target file to the field.

4. Printing a Target Sample Report. (2-page report of field with the target sample locations).

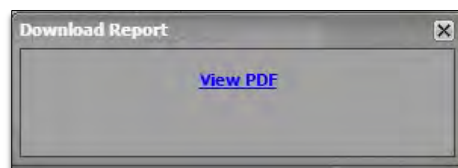
- A.** With a field and target samples displayed, click on the print icon.



- A Target Sample Report Options control panel will display (right).
- Choose the required zoom level and add notes if desired.
- Click the **Print** button.
- A notification will display stating the report has been sent to the

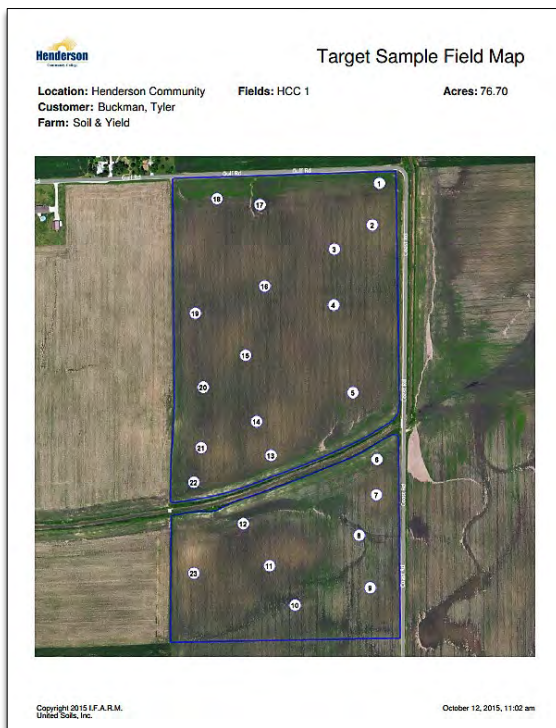


- When finished, a **Download** prompt will appear allowing the pdf report to be opened. Users can open the report via the File Manager as well.



Grid Target Samples continued...

B. When opened, the report will display as shown. Users can save this pdf to their local drive or print the



Target Sample Field Reference Sheet

Plot #	Location	Farm	Field	Sub-Field	Lat	Lon	Acres
1	Henderson	Soil & Yield	HCC 1	MASTER	48.063457	-88.939579	76.70

Notes:

Total Acres: 76.70

Copyright 2015 I.F.A.R.M. United Soils, Inc. October 12, 2015, 11:02 am

Note: Users can choose the background layer visual (satellite / roads). The Target Sample reports will not display soil type / yield / other data layers.