

## How to Drag Boundaries or Fields

- 1. Drag Boundary / Field.** This option allows the use to shift a field segment or full boundary in any direction (verses moving individual points).

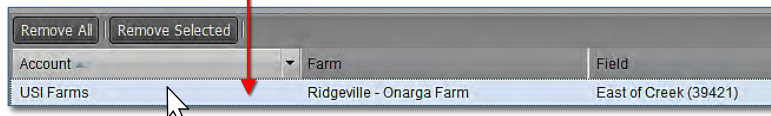


**Note:** I.F.A.R.M. offers the means to move an entire field, or just a section of a field.

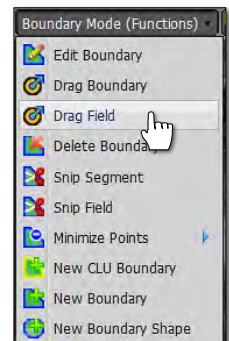
**Drag Boundary:** Allows movement of sections of fields (for fields that are made up of multiple properties / boundaries).

**Drag Field:** Allows movement of entire fields (including all sections of fields that are made up of multiple properties / boundaries).

- In those instances where the boundary (GPS) is shifted and needs to be moved in its entirety in a certain direction, first click on the field name in the Account window (below).
  - The field will outline in **blue**, indicating it is in editing mode. The field name will display with a blueish highlight.



- Go to the Boundary Mode (Functions) drop-down menu and select **Drag Field** (right).
- Click and hold on the boundary (field). Drag / shift the field to the desired location. You will note the entire field is free-floating and can be moved in any direction.

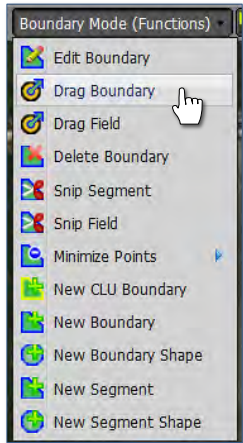


- Once the field is in its final position, go to the **Boundary Mode -- Drag Field -- (Click here to save)** button and select it to save the repositioned boundary.

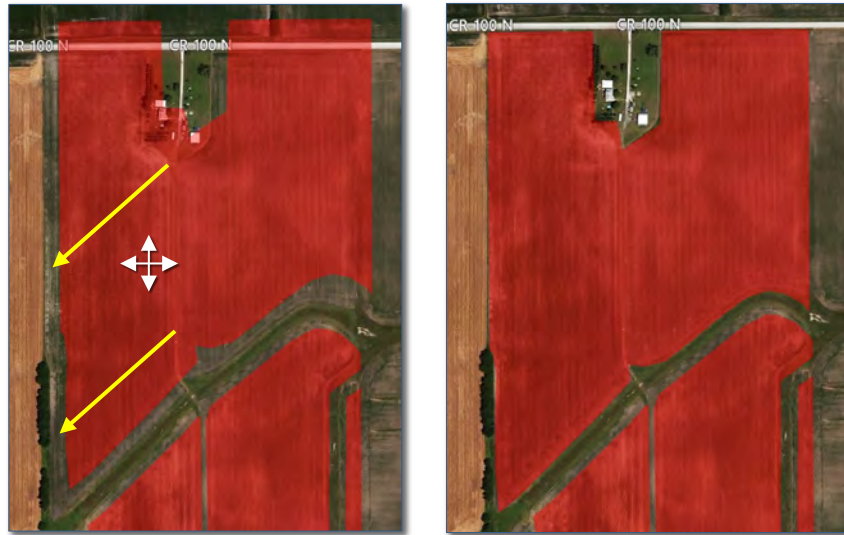


*Dragging Boundaries or Fields continued...*

- If you want to move just a Section of a field boundary, choose **Drag Boundary** (vs. Drag Field). In this mode, users can select the separate sections of a field and move as needed.



- Click and drag / shift the section to the desired location. You will note the entire field is free-floating and can be moved in any direction.



- Once the field is in its final position, go to the **Boundary Mode -- Drag Boundary -- (Click here to save)** button and select it to save the repositioned section / boundary.

