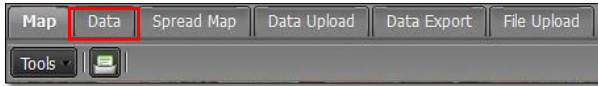
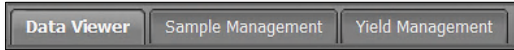


## Data Tab - Data Viewer - Yield

The Data Tab provides functions for working with field data. To activate the options, select the **Data Tab**.

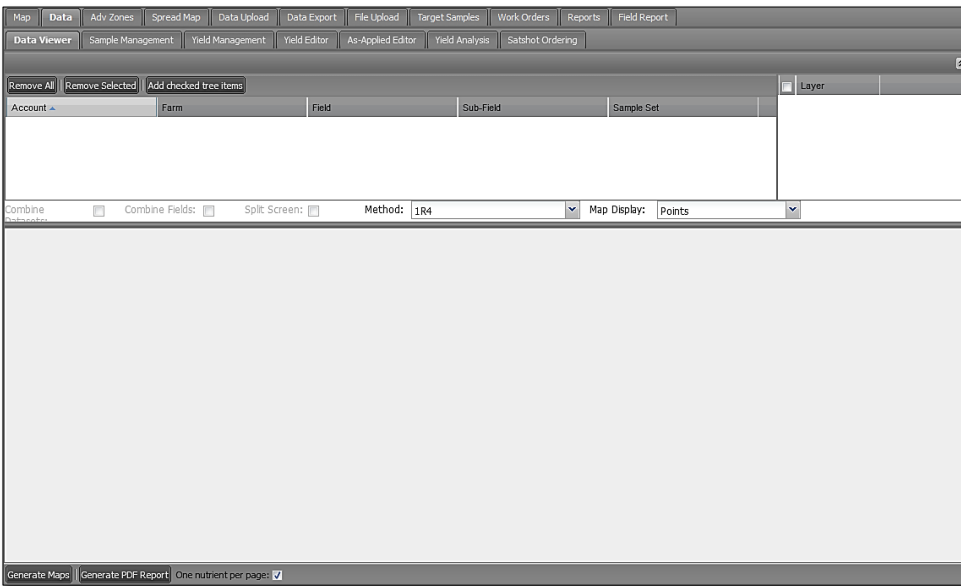


The following functions / tabs will be displayed.



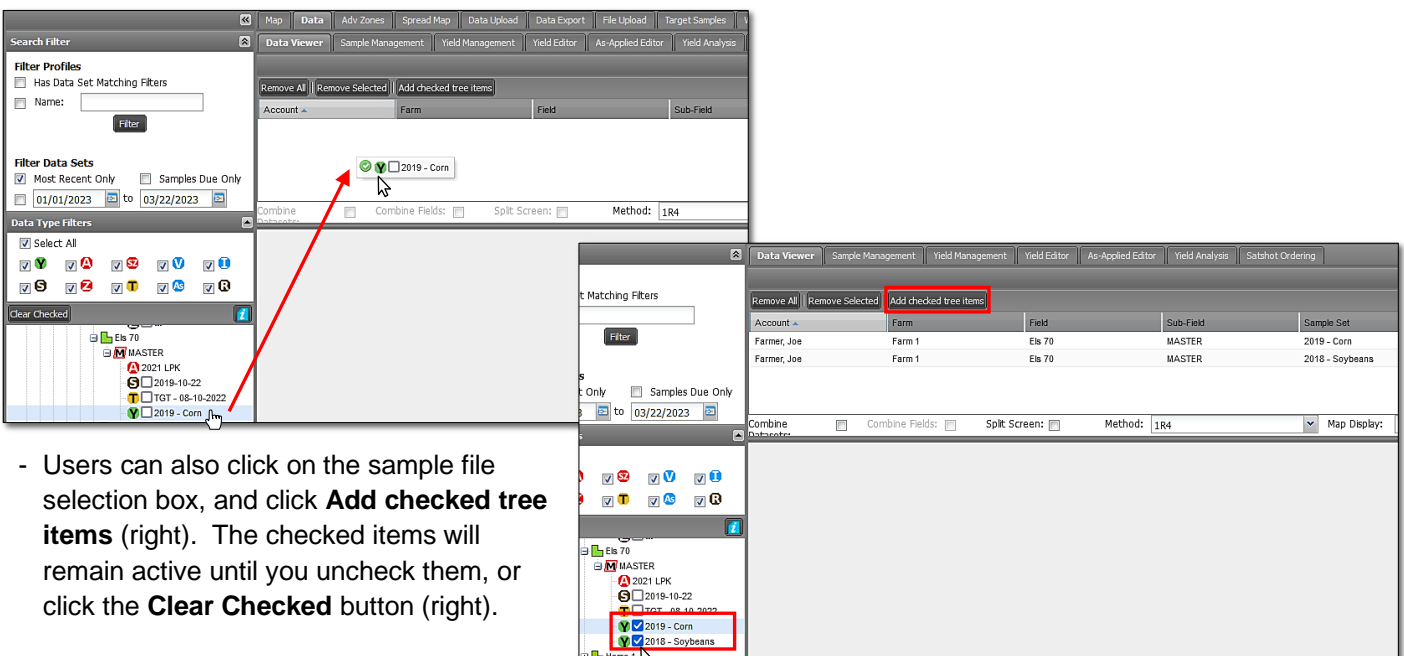
1. **Data Viewer:** This option allows you view / print soil analysis; yield data; satellite imagery, Veris, As-Applied, etc.

A. Click on the **Data Viewer** tab. The following page/options will be displayed.



2. **Yield Analysis.**

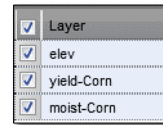
A. From the I.F.A.R.M. customer listing window, left click and hold a **Yield** file, and drag over to the **Account Window**. You can drag over individual or multiple files. Release to load the data.



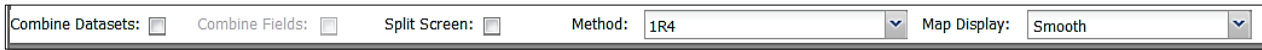
- Users can also click on the sample file selection box, and click **Add checked tree items** (right). The checked items will remain active until you uncheck them, or click the **Clear Checked** button (right).

Data Viewer - Yield continued...

B. Under the **Layer** window, select the yield attributes you want to display. To select all attributes, click in the uppermost **Layer box**.



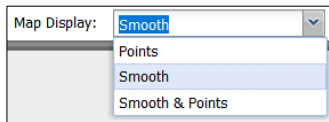
C. This page offers three viewing options:



- **Combine Data Sets:** Use this if you wish to show average yield for the same field from results of multiple harvest years (i.e. results from 2015 & 2019). The data is merged into a new map / results.
- **Combine Fields:** Use this option if you want to display multiple fields on the Map. This works best if two field boundaries are next to one another and you wish them to be treated as one combined field. If fields are too far apart, they will not display properly.
- **Split Screen:** This allows the user to view results side-by-side. This is limited to the same kind of dataset (i.e. soil or yield). Selecting Split Screen will open two windows, where users can view two separate yield files from different years.
- **Map Display:** This allows for showing the yield map in a smoothed visual or by points / rows; or both options. Points option shows actual yield datapoints and directional rows the harvester took in the field. Smooth is the default map visual.

A. **Yield Display:** I.F.A.R.M. offers the choice of seeing the yield map rendered with points vs. a smooth map.

- Click on the Yield Display drop-down menu. Choose the view desired.

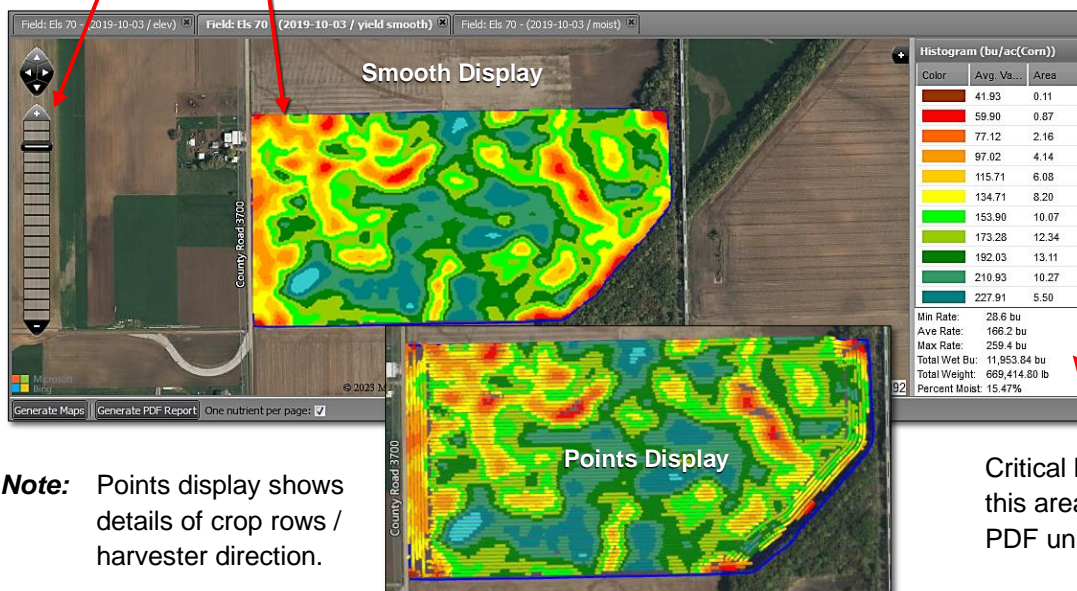


**Note:** If the Smooth & Points option is chosen, the resulting report will generate a map displaying both map images. Yield contains a much higher amount of data than soil tests. It may take several seconds for the yield data to display.

B. To display the results, select the **Generate Maps** button. The Yield map will be displayed.



- **Histogram:** Displaying color chart with corresponding values (in bushels per acre only).
- **Field Data:** Total Area (in acres) with assigned color scale to render analysis variations.
- **Viewing Scale:** Enlarge or reduce the map image. Can achieve this via your mouse as well.

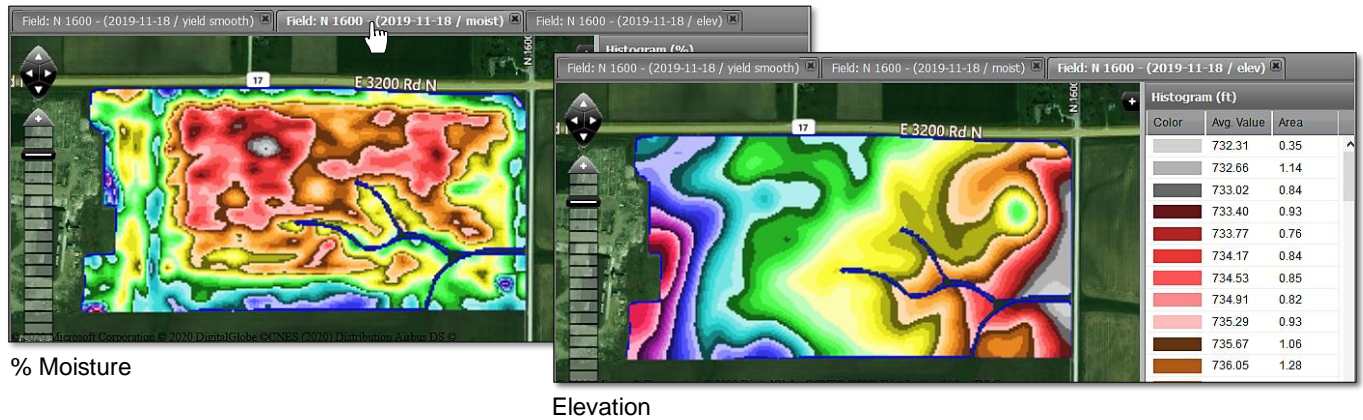


**Note:** Points display shows details of crop rows / harvester direction.

Critical levels are displayed in this area. No need to Generate PDF unless required.

Data Viewer - Yield continued...

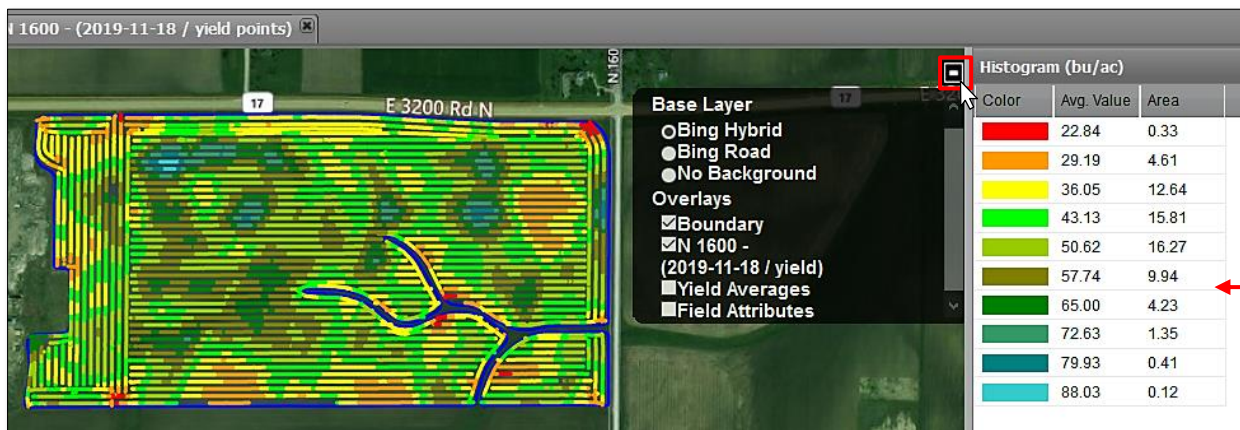
F. If you select more than one product attribute, each map will be available via a corresponding tab. Click on other map tabs to display the results.



**Note:** The colors of the maps are determined by set **color scales** in I.F.A.R.M. If a user wishes to change their color scale, contact I.F.A.R.M., Inc. and request colors / value breaks as desired.

### 3. Base Layer Option.

A. By clicking on the black + box in the map window, users can view other mapping options.



- **Bing Hybrid:** Displays the Bing satellite viewing map.
- **Bing Road:** Displays the Bing Road viewing map.
- **No Background:** Removes imagery in the background and shows the field in white space.
- **Boundary:** Hides the boundary of the field.
- **Field Name / Yield Year:** Clicking off this box hides the yield imagery.
- **Yield Averages:** Yield average values can be displayed, but requires a soil test for the sample pt locations.
- **Field Attributes:** If field attributes were applied to the field (via the map tab), they will be visible on the map.

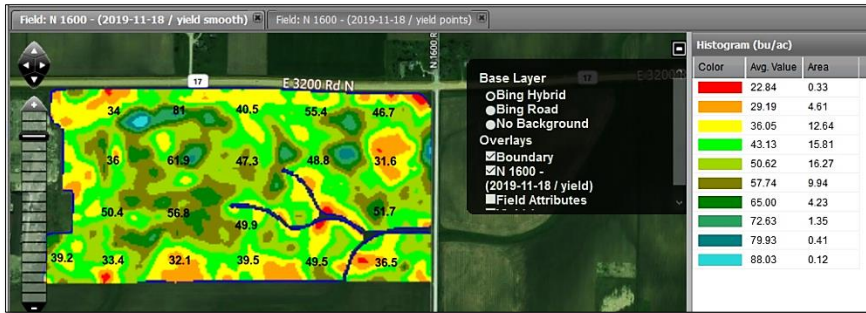
B. **Yield Averages:** To make the yield averages visible, the field must have a soil data file, as the yield needs the sample point locations to indicate where the yield is to display on the map.

- Drag in a soil test and a yield file into the account window.
- When **Yield Averages** is checked, the prompt opens. Use the drop-down to select a soil sample set.
- Click **Select** when finished. After a few seconds the yield averages will display on the map.



Data Viewer - Yield continued...

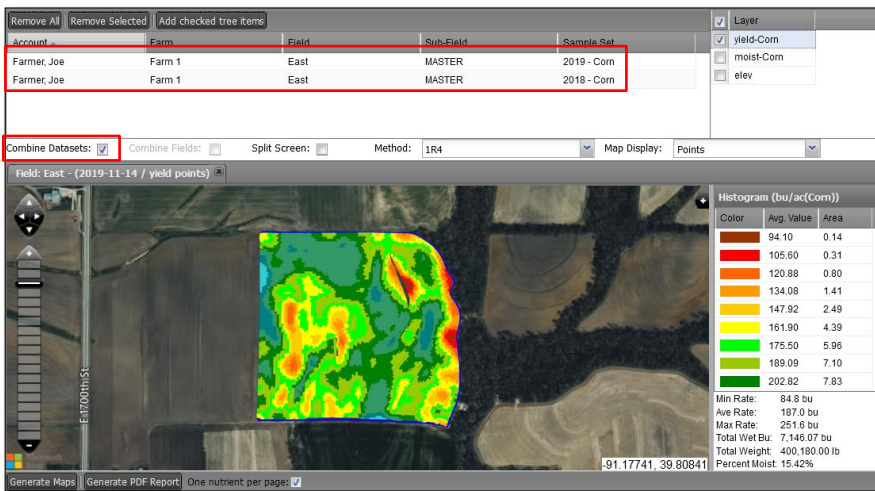
- The map will display with yield average values where the soil sample points are located.



## 4. Viewing Options:

### A. Combine Datasets:

- Users can pull in multiple yield files and combine them into a merged averaged map.
- Click the **Combine Datasets** button. Generate the maps.



### B. Combine Fields:

- Users can pull in multiple soil files of fields that are in close proximity to one another.
- This works best if fields border one another.
- If there is too much area between fields, an error may appear stating the field exceeds the 2000 acre limit.
- Pull in multiple years of soil data, click on the **Combine Fields** button, select the nutrient layer options and **Generate Maps**. The resulting map will show the multiple fields together; sharing a color scale.

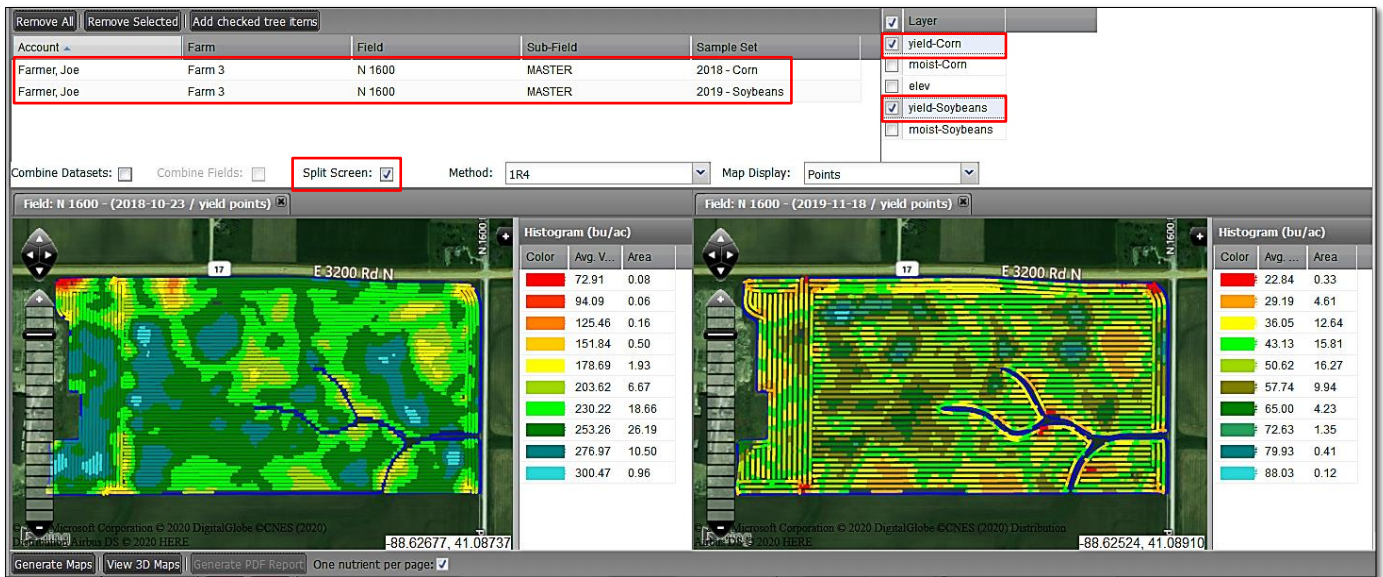


Data Viewer - Yield continued...

### C. Split Screen:

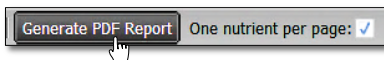
- Users can pull in two (2) datasets from the same field and view the different results via two separate screens.
- Once the datasets are pulled in, select the map options, click the **Split Screen** button, and **Generate Maps**.
- Note two screens appear, and different maps will be displayed with the **oldest dataset on the left side**.

**Note:** Datasets need to be from the same field. The Split Screen option will grey out if not. Also, this option is for viewing only, you will not be able to print out a PDF report from this option. Turn off the Split Screen to print out the multiple reports.

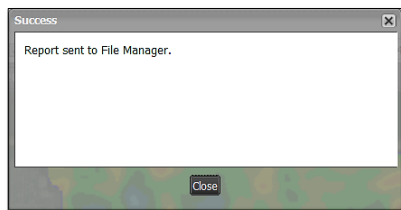
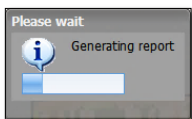


### 4. Generating Reports.

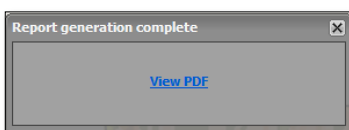
A. If you want to convert the maps / results into a PDF file, select the **Generate PDF Report** button.



- A brief indicator will appear showing the report is generating, then a notification the report has been sent to the File Manager.

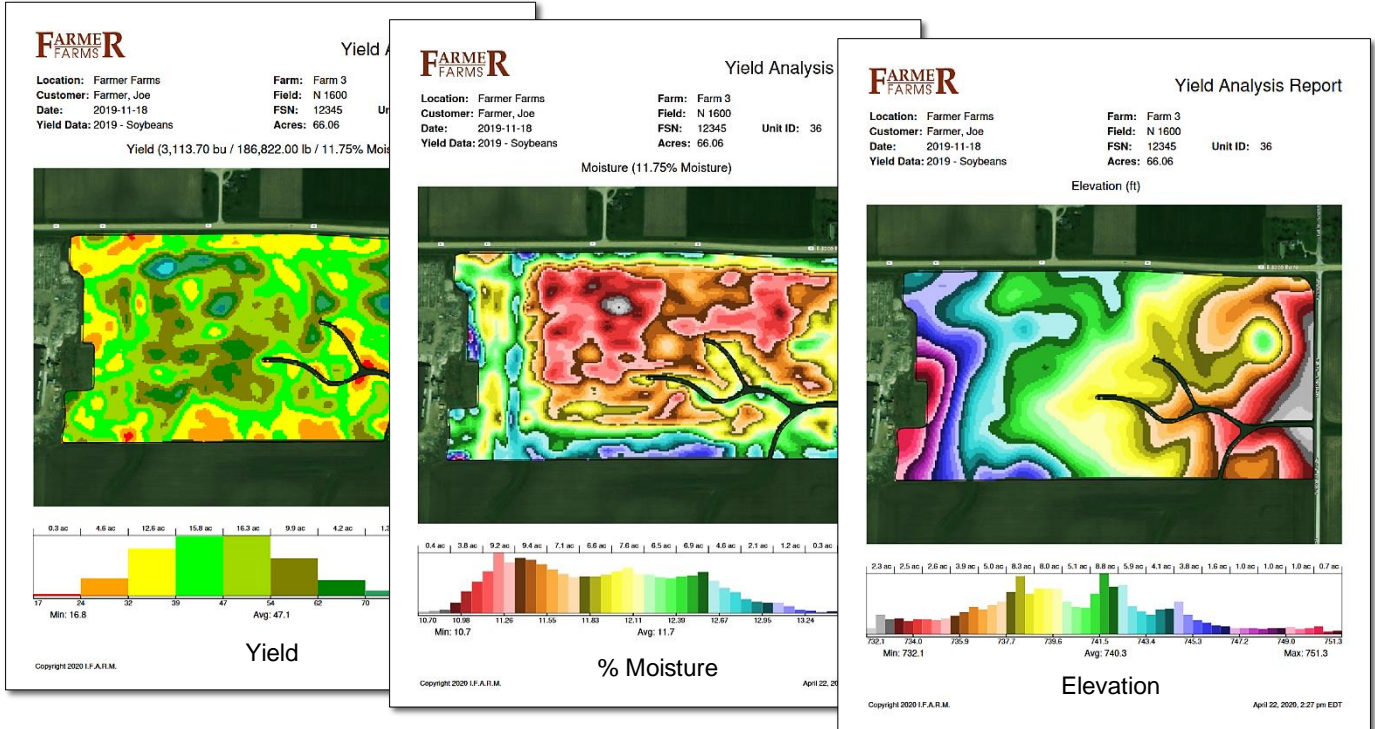


B. After a short period of time, another indicator will appear indicating the report is finished and can be opened. Click on **View PDF** to open the PDF. Users can also close it and open it in the File Manager at another time.



Data Viewer - Yield continued...

- C. If View PDF is chosen, the report(s) will open. The number of layers will determine how many maps are displayed. If the yield averages option is on, the yield report will display the averages on the map.
  - This report can be printed or saved to a local drive.



- D. If the One Nutrient per Page is turned off, the reports will display with multiple maps on a single page. The maximum number of maps per page is four (right).



- Users can print the report or save it to their computer.

**Note:** The data viewer yield report was redesigned to include **FSN & Unit field IDs** to help serve insurance claim needs; which also require: Total Wet Bushels; Total Lbs; % Moisture; Yield Ave.; no background image.

