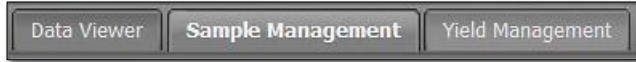


Data Tab - Sample Management - Soil Data

The Data Tab provides functions for working with field data. To activate the options, select the **Data Tab**.

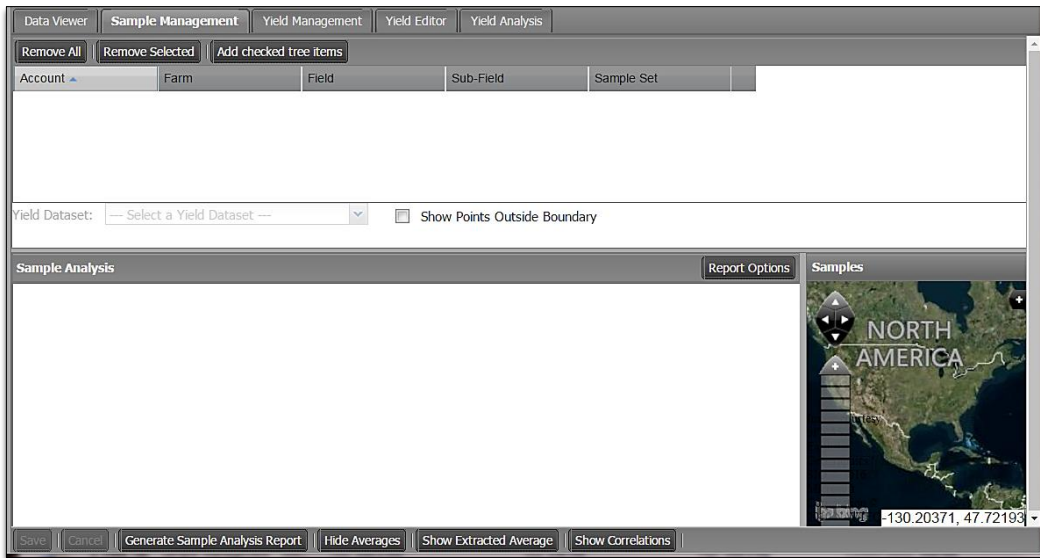


The following functions / tabs will be displayed.

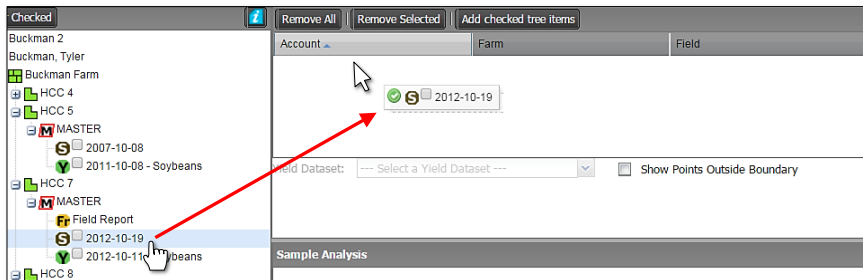


1. **Sample Management:** This option allows you view / print soil analysis data / reports per field.

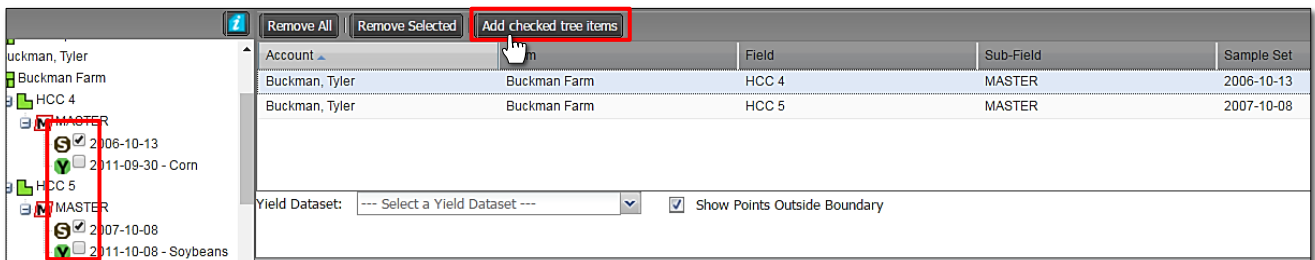
A. Click on the **Sample Management** tab. The following page/options will be displayed.



B. From the I.F.A.R.M. customer listing window, click and hold a soil sample file, and drag up to the **Account Window**. You can drag over individual or multiple soil sample files.



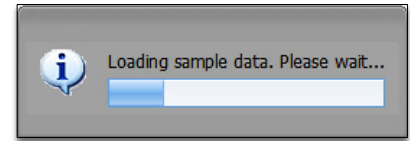
- The files will appear in the account window and start the loading process.
- The data file check boxes can be used as well. Click the box(es) then select **Add checked tree items**.



Note: You must first drag in a soil sample and have it display before using the Add checked tree items option.

Sample Management - Soil Data continued...

C. View Points. As soon as the soil data file is pulled into the Account window, the map and lab analysis data will start to load. An indicator will appear to show the status of the loading process.



D. The sample analysis data will be displayed in the left window; the field map with sample locations in the right.

ID	P (lb/ac)	K (lb/ac)	pH	om	CEC	bpH	Ca (lb/ac)	Mg (lb/ac)
1	146	328	5.7	3.2	22.1	6.4	4704	1008
2	126	272	6.0	3.4	19.3	6.7	4473	945
3	80	252	5.9	3.0	20.1	6.7	4599	924
4	120	312	5.5	3.2	19.9	6.2	4053	819
5	100	324	6.3	3.0	18.4	7.0	4494	1008
6	85	356	7.9	3.0	21.1	7.0	6972	777
7	138	408	6.3	3.2	25.3	7.0	7077	840
8	96	308	6.0	3.0	20.7	6.8	4935	924
9	111	336	5.9	3.0	17.0	6.7	3780	819
10	80	248	6.2	3.0	12.9	7.0	3087	672
11	103	324	6.2	3.0	15.3	7.0	3444	924
12	107	380	6.1	3.0	19.4	6.9	4221	1176
13	103	360	7.0	3.0	19.9	7.0	5628	1281
14	107	356	6.9	3.0	21.5	7.0	5985	1365

Note: All point locations and nutrient numeric values are non-editable. Users will need to contact I.F.A.R.M. to make the required edits.

E. Viewing Multiple Entries. If multiple datasets have been entered, to view a specific set, simply click on it. The following notice will appear. Clicking **Yes** will display the results.

Account	Farm	Field	Sub-Field	Sample Set
Buckman, Tyler	Buckman Farm	HCC 4	MASTER	2006-10-13
Buckman, Tyler	Buckman Farm	HCC 5	MASTER	2007-10-08

Cancel Changes

Are you sure you want to load a new dataset? Any unsaved changes will be lost.

Yes No

ID	P (lb/ac)	K (lb/ac)	pH	om	CEC	bpH	Ca (lb/ac)	Mg (lb/ac)
1	227	800	6.5	3.4	21.2	7.0	5643	
2	68	540	6.0	3.3	18.4	6.7	4455	
3	62	436	5.9	3.5	20.2	6.5	4950	
4	55	344	5.8	3.6	23.3	6.4	5346	
5	52	360	6.1	3.4	20.3	6.8	5049	
6	71	308	5.8	3.6	26.3	6.4	6039	
7	81	348	5.8	3.6	29.9	6.4	6831	
8	35	224	5.7	3.4	22.6	6.4	5445	
9	66	520	6.0	3.6	24.0	6.6	5841	
10	62	348	5.9	3.7	28.8	6.5	6930	

F. The sample map window is interactive, meaning you can click and hold on the grey vertical bar and drag the window open to the left or right. This will expand the data window and allow you to spread the data columns.

ID	P (lb/ac)	K (lb/ac)	pH	om	bpH	Ca (lb/ac)	Mg (lb/ac)	PerCa	PerK	PerMg	PerH	Description
1	35	380	6.4	3.5	17.8	7.0	4356	1029	61.2	2.7	24.1	12.0
2	102	456	6.1	3.6	18.4	6.7	4356	871	59.2	3.2	19.7	17.9
3	37	408	6.6	3.0	17.2	7.0	4455	1009	64.8	3.0	24.4	7.8
4	62	368	6.2	3.5	18.3	6.8	4455	910	60.9	2.6	20.7	15.8
5	62	540	6.0	2.4	19.3	6.9	4158	1039	53.9	3.6	22.4	20.1
6	45	348	6.2	2.8	19.8	7.0	4554	1148	57.5	2.3	24.2	16.1
7	60	460	6.0	3.2	18.9	6.7	4257	940	56.3	3.1	20.7	19.8
8	40	332	5.9	3.3	17.4	6.6	3861	831	55.5	2.4	19.9	22.2
9	44	440	6.0	3.6	17.9	6.6	4158	801	58.1	3.2	18.6	20.1
10	33	408	5.9	2.8	17.5	6.7	3960	782	56.6	3.0	18.6	21.8

Sample Management - Soil Data continued...

- The columns can be rearranged as well. Left click and hold on a column and move it to the left or right.
- Note there will be two blue arrows indicating where the column will reside. By letting go of the mouse left click, the column will be repositioned.

ID	P (lb/ac)	pH	K (lb/ac)
1	146	5.7	328
2	126	6.0	272
3	80	5.9	252

ID	pH	P (lb/ac)	K (lb/ac)
1	5.7	146	328
2	6.0	126	272
3	5.9	80	252

Note: Re-positioned columns will not show on the report, only on the visual screen. The PDF report is a static report.

G. Users have the option to show / hide analysis averages:

- By default, the test averages show automatically at the bottom of the list when the data loads.
- To hide the averages, click on the **Hide Averages** button. Note the average row is removed and the button changes to **Show Averages**. Clicking Show Averages puts the row back.
- If the averages are hidden, they will not print out on the Sample Summary Report.

<input type="checkbox"/>	30	6.6	54	184	3.2	11.7	7.0	3234	588
<input type="checkbox"/>	31	6.3	115	300	3.0	16.3	7.0	3738	1029
<input type="checkbox"/>	32	6.1	132	344	3.2	19.7	6.8	4620	1008
	Avg.	6.3	110	317	3.1	19.5	6.8		

Buttons: Save, Cancel, Generate Sample Analysis Report, **Hide Averages**, Show Ex...

<input type="checkbox"/>	30	6.6	54	184	3.2	11.7	7.0	3234	588
<input type="checkbox"/>	31	6.3	115	300	3.0	16.3	7.0	3738	1029
<input type="checkbox"/>	32	6.1	132	344	3.2	19.7	6.8	4620	1008

Buttons: Save, Cancel, Generate Sample Analysis Report, **Show Averages**, Show Extracted Averages

- Sample Management also offers **Extracted Averages**. This feature removes the most extreme sample values (high and low) to give a truer field average.

<input type="checkbox"/>	30	6.6	54	184	3.2	11.7	7.0	3234	588
<input type="checkbox"/>	31	6.3	115	300	3.0	16.3	7.0	3738	1029
<input type="checkbox"/>	32	6.1	132	344	3.2	19.7	6.8	4620	1008
	Avg.	6.3	110	317	3.1	19.5	6.8	4779	988
	Extr. Avg	6.2	107	323	3.1	19.8	6.9	4679	975

Buttons: Save, Cancel, Generate Sample Analysis Report, Hide Averages, **Hide Extracted Averages**, Sh

- Clicking on Hide Extracted Averages will remove the column.
- If the averages are hidden, they will not print out on the Sample Summary Report.

H. Users can also remove / hide columns if desired. This will help clean up the visual analysis information.

- Click on the **Report Options** button.
- A list of all tested nutrients / options will display.
- Click those check boxes you wish to turn off.
- Clicking on the check boxes will remove or add needed columns.
- The columns will disappear or reappear every time a box is checked or unchecked (below).

Report Options	Samples
<input checked="" type="checkbox"/> ID	<input checked="" type="checkbox"/> PerH
<input checked="" type="checkbox"/> P (lb/ac)	<input checked="" type="checkbox"/> Description
<input checked="" type="checkbox"/> K (lb/ac)	<input type="checkbox"/> b_point_in_boundary
<input checked="" type="checkbox"/> pH	<input type="checkbox"/> Yield Avg (bu/ac)
<input checked="" type="checkbox"/> om	
<input checked="" type="checkbox"/> CEC	5 8 17
<input checked="" type="checkbox"/> bpH	
<input checked="" type="checkbox"/> Ca (lb/ac)	
<input type="checkbox"/> Mg (lb/ac)	4 9 16

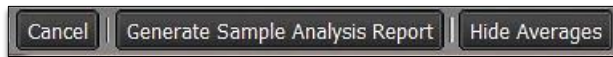
Sample Management - Soil Data continued...

Note: Changing the number of columns will affect the Sample Management report. Whatever is listed will be generated on the report.

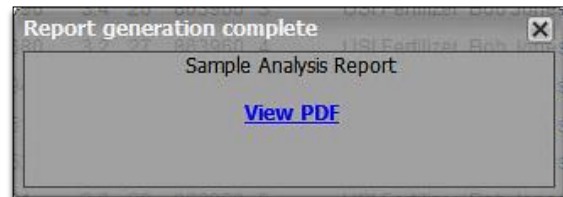
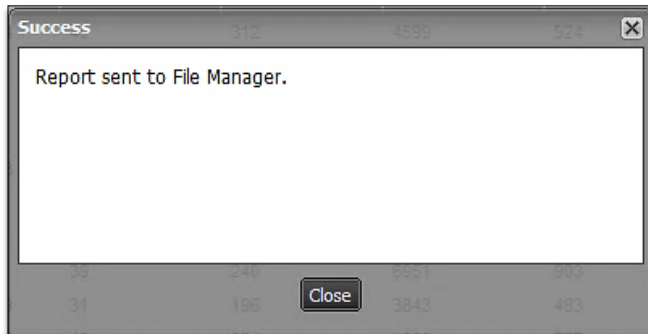
Sample Analysis									Report Options	Samples
ID	P (lb/ac)	K (lb/ac)	pH	om	CEC	bpH	Ca (lb/ac)	Mg (lb/ac)		
1	35	380	6.4	3.5	17.8	7.0	4356	1029	<input checked="" type="checkbox"/>	ID
2	102	456	6.1	3.6	18.4	6.7	4356	871	<input checked="" type="checkbox"/>	P (lb/ac)
3	37	408	6.6	3.0	17.2	7.0	4455	1009	<input checked="" type="checkbox"/>	K (lb/ac)
4	62	368	6.2	3.5	18.3	6.8	4455	910	<input checked="" type="checkbox"/>	pH
5	62	540	6.0	2.4	19.3	6.9	4158	1039	<input checked="" type="checkbox"/>	om
6	45	348	6.2	2.8	19.8	7.0	4554	1148	<input checked="" type="checkbox"/>	CEC
7	60	460	6.0	3.2	18.9	6.7	4257	940	<input checked="" type="checkbox"/>	bpH
8	40	332	5.9	3.3	17.4	6.6	3861	831	<input checked="" type="checkbox"/>	Ca (lb/ac)
9	44	440	6.0	3.6	17.9	6.6	4158	801	<input checked="" type="checkbox"/>	Mg (lb/ac)
10	33	408	5.9	2.8	17.5	6.7	3980	782	<input type="checkbox"/>	PerCa
11	36	344	6.4	3.2	16.5	7.0	4158	881	<input type="checkbox"/>	PerK
12	69	372	7.4	3.5	21.3	7.0	6633	1009	<input type="checkbox"/>	PerMg
13	51	592	6.0	3.6	22.0	6.6	5049	1019		
14	99	416	5.9	3.4	23.9	6.6	5346	1138		
15	75	464	6.3	3.4	26.2	7.0	6732	1217		
16	79	432	6.3	3.5	19.8	6.9	4752	1108		
17	91	436	6.5	2.6	16.5	7.0	4059	999		
18	40	300	6.2	3.2	19.2	6.9	4455	1098		
Avg.	59	416	6.2	3.2	19.3	6.8	4653	991		

2. Generate Sample Analysis Report.

A. If you want to output a PDF report of the field boundary with sample point locations and analysis data, click on the **Generate Sample Analysis Report** button.



B. The following indication will appear stating the report has been saved to the File Manager. After a few seconds, another indicator will appear. Users can click on **View PDF**, or close out of it and open it in the File Manager at another time.



C. If **View PDF** is selected, a 2-pg PDF report will display showing the field boundary with sample point locations (with chosen background), and a second page with the test data results.

- Users can print or save the PDF from the PDF software.

Sample Management - Soil Data continued...

Sample Management Report

Location: Van Horn Training
Customer: Van Horn Macon
Dates: 2004-11-13

Farm: Onarga Test Farm
Field: iFARM Eads
Acres: 38.92

Copyright 2013 I.F.A.R.M. United Soils, Inc. August 25, 2013, 6:55 am

Soil Test Results

Location: Van Horn Training
Customer: Van Horn Macon
Dates: 2004-11-13

Farm: Onarga Test
Field: iFARM Eads
Acres: 38.92

ID	pH	bpH	P (lb/ac)	K (lb/ac)	CEC	om	Ca (lb/ac)	Mg (lb/ac)	PorCa	PorMg	PorK
1	6.2	6.9	37	300	21.2	3.4	5354	967.0	62.9	19.4	1.8
2	7.8	7.0	38	324	31.0	2.9	620	796.0	7.4	10.7	1.3
3	7.7	7.0	43	356	31.3	3.0	689	967.0	5.5	13.1	1.4
4	7.4	7.0	38	318	24.7	2.8	7077	1575.0	71.6	26.6	1.6
5	5.9	6.7	22	236	16.7	2.0	5248	492.0	59.1	17.5	1.8
6	7.7	7.0	30	360	37.2	3.1	5062	967.0	20.6	11.1	1.2
7	7.8	7.0	25	248	35.8	3.2	2642	924.0	18.4	10.8	0.9
8	7.4	7.0	39	300	18.5	3.3	5901	840.0	79.7	18.9	1.4
9	6.6	7.0	59	344	16.9	3.3	5261	662.0	74.9	14.5	2.6
10	7.9	7.0	33	232	57.1	2.7	1000	1029.0	4.4	7.5	0.5
11	6.4	7.0	59	340	25.3	3.3	7098	967.0	70.1	16.3	1.7
12	6.4	7.0	30	300	19.3	3.2	5189	924.0	66.1	19.9	2.0
13	5.8	6.6	57	192	19.2	3.1	5991	557.0	59.1	15.5	1.6
14	7.3	7.0	50	260	20.7	3.4	6615	924.0	70.9	18.6	1.6
15	5.5	6.2	47	184	15.5	3.2	3381	625.0	54.5	14.1	1.5
16	6.2	6.9	37	212	19.2	3.4	4914	861.0	64.0	18.7	1.4
Avg	6.9	6.9	41	274	25.4	3.1	4146	887.3	49.9	15.8	1.5

Copyright 2013 I.F.A.R.M. United Soils, Inc. August 25, 2013, 6:55 am

- 3. Map Layers.** Users can change the background view of the field / sample map.
- Click on the black + button.
 - A Base Layer / Overlay window will appear.
 - Users can choose between the soil type layer (or if available) the yield analysis layer. Click the corresponding checkbox to activate the background.
- Note:** Whatever layer is visible will print on the Sample Summary Report.

Base Layer

- Bing Hybrid
- Bing Roads

Overlays

- Soil Type
- Boundary
- Yield

Soil Type Layer

Yield Layer

- Bing Hybrid
- Bing Roads

Overlays

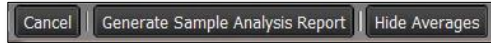
- Soil Type
- Boundary
- Yield

Yield Layer

Sample Management - Soil Data continued...

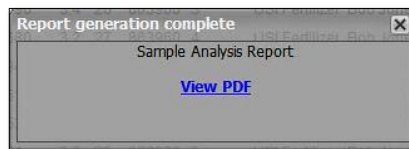
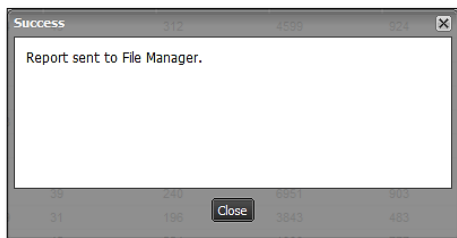
4. Generate Sample Analysis Report with Background Layer.

A. If you want to output a PDF report of the field boundary with sample point locations and analysis data, click on the **Generate Sample Analysis Report** button.



Note: As mentioned previously, if the user wants the analysis averages hidden, they can click the Hide Averages button. If not, the averages will print out on the report.

B. The following indication will appear stating the report has been saved to the File Manager. After a few seconds, another indicator will appear. Users can click on **View PDF**, or close out of it and open it in the File Manager at another time.



C. If **View PDF** is selected, a 2-pg PDF report will display showing the field boundary with sample point locations (with chosen background), and a second page with the test data results.

- Users can print or save the PDF from the PDF software.

Label	Name	Acres	Drainage	Percs	Corn Yield	Soybean Yield
102	La hogue loam	19.16	Somewhat Poor	9.17	129	43
125	Selma loam	54.93	Poor	9.17	136	44
151	Ridgeville fine sandy loam	0.03	Somewhat Poor	9.17	115	40
153	Peña clay loam	7.22	Poor	9.17	140	48

ID	P (lb/ac)	K (lb/ac)	pH	om	CEC	bpH	Ca (lb/ac)	Mg (lb/ac)
1	146	328	5.7	3.2	22.1	6.4	4704	1008
2	126	272	6.0	3.4	19.3	6.7	4473	945
3	80	252	5.9	3.0	20.1	6.7	4599	924
4	120	312	5.5	3.2	19.9	6.2	4053	819
5	100	324	6.3	3.0	18.4	7.0	4494	1008
6	85	356	7.9	3.0	21.1	7.0	6972	777
7	138	408	6.3	3.2	25.3	7.0	7077	840
8	96	308	6.0	3.0	20.7	6.8	4935	924
9	111	336	5.9	3.0	17.0	6.7	3780	819
10	80	248	6.2	3.0	12.9	7.0	3067	672
11	103	324	6.2	3.0	15.3	7.0	3444	924
12	107	360	6.1	3.0	18.4	6.9	4221	1176
13	103	360	7.0	3.0	19.9	7.0	5638	1261
14	107	356	6.9	3.0	21.5	7.0	5985	1365
15	111	368	6.5	3.2	22.6	7.0	5691	1344
16	85	256	6.3	3.2	19.3	7.0	4767	1050
17	132	304	5.8	3.0	19.8	6.6	4221	987
18	100	336	6.3	3.0	20.1	7.0	4851	1134
19	154	398	5.9	3.2	25.1	6.6	4893	945
20	85	332	7.1	3.2	20.7	7.0	5775	1407
21	164	404	5.8	3.0	24.6	6.6	5313	1176
22	93	328	6.2	3.0	20.0	7.0	4809	1050
23	96	340	6.5	3.2	19.7	7.0	5082	1092
24	100	344	6.2	3.2	17.9	6.9	4347	924
25	164	312	6.3	3.2	17.5	7.0	4074	1071
26	126	332	6.1	3.0	19.9	6.9	4599	1050
27	82	264	7.6	3.2	18.2	7.0	6153	588
28	103	288	5.9	3.0	22.3	6.7	5313	903
29	115	324	6.0	3.2	17.1	6.7	3990	798
30	54	184	6.6	3.2	11.7	7.0	3234	588
31	115	300	6.3	3.0	16.3	7.0	3738	1059
32	132	344	6.1	3.2	19.7	6.8	4620	1008
Avg.	110	317	6.3	3.1	19.5	6.8	4779	988
Extr.	107	323	6.2	3.1	19.8	6.9	4679	975