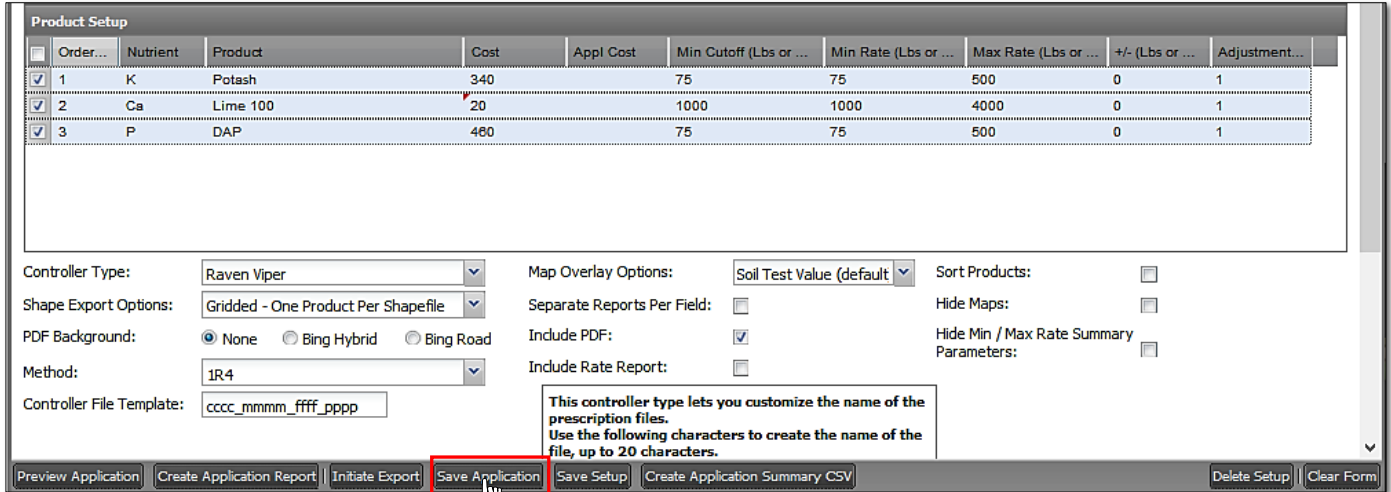


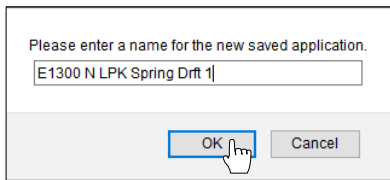
Spread Map Tab - Rx Export - Saved Application & Setup

1. **Save Application.** This feature allows you to save a specific spread application for a single or multiple fields. This proves to be a time-saving and convenient way to archive what was done for specific fields.

A. With all field conditions / parameters entered, click on the **Save Application** button in the lower window.



B. A **Script Prompt** window appears allowing you to name the application (right). Type in the desired name and click the **OK** button.



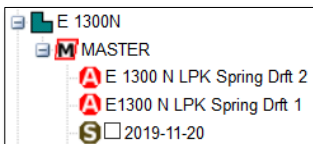
- After a few seconds, a notice indicator will appear confirming the **Application has been saved.**



C. The saved application will automatically appear as a **red A** under the field (below).

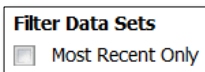


Note: This feature is convenient if you want to recall what was done for a given field. You can pull up a saved field and re-run reports / files as needed.



Multiple Saved Applications can be saved under the field. Identifying them by draft # or name is suggested.

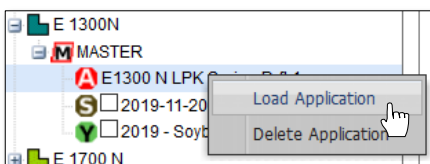
Remove the **Most Recent** only filter to see all Saved Applications (left).



- Be advised the naming of applications is touchy. You should not name applications too similar. We advise adding a numeral or draft identification (i.e. 2023 LPK Spring Dft 1 or 2023 LPK Spring Dft 2).

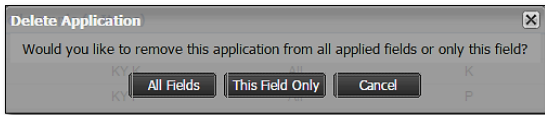
2. By right clicking on the **red** application file, you will get the option to **Load** or **Delete** the application.

A. If you click on **Load Application**, the full Rx setup fields will populate with the saved criteria.



Rx Export Tab - Save Application & Setup continued...

- B.** If you click on **Delete Application**, a **Delete Application** indicator will appear. To delete the application, click **This Field Only**.



- Users are given the option to remove an application from a single field, or multiple fields (where the same application was used to create recommendation applications for multiple fields).
- Click on **All Fields**.
- If All Fields is chosen, the saved application will be removed from all fields it was tied to.

- C.** The saved application will be removed immediately from the index tree.

- 3. Save Setup.** This function allows users to save specific setup conditions to apply to multiple fields.

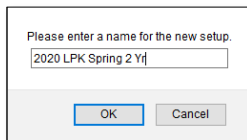
- A.** With all field conditions / parameters entered, remove the current field by clicking on the **Remove All** or **Remove Selected** buttons. The soil data will be removed.



- B.** Move to the bottom of the screen and select the **Save Setup** button.

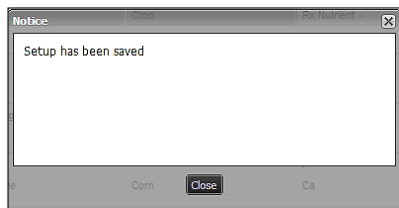


- C.** A **Script Prompt** window appears allowing you to name the setup. Type in the desired name and click the **OK** button.

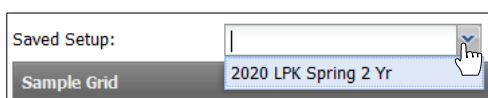


Note: Give the setup a name that is very descriptive, so it is easy to recognize when it is needed.

- After a few seconds, a notice indicator will appear confirming the **Setup has been saved**.



- D.** To verify the setup was saved, go to the **Saved Setup** drop-down menu and click on the drop down arrow. The newly Saved Setup should be there to choose.



- On future Rx applications, users can go to the Saved Setup menu and select a given setup. The Rx information will populate all windows.
- Users can drag in as many soil sample analysis files that apply to that fertilization recommendation.

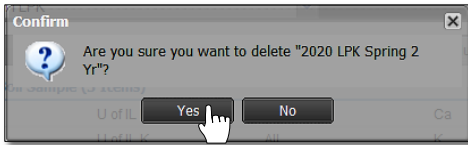
Rx Export Tab - Save Application & Setup continued...

4. Delete a Setup. This function allows users to delete setups that are in the Saved Setup menu.

A. If you wish to delete a given Saved Setup, select it in the drop-down menu, then go down to the bottom lower right of the page and select the **Delete Setup** button.



B. A prompt will appear to confirm the decision to delete the setup. Click **Yes** if so.



C. A **Success** indicator will appear stating the setup has been deleted (right).

- You will see the setup has been removed from the menu.

