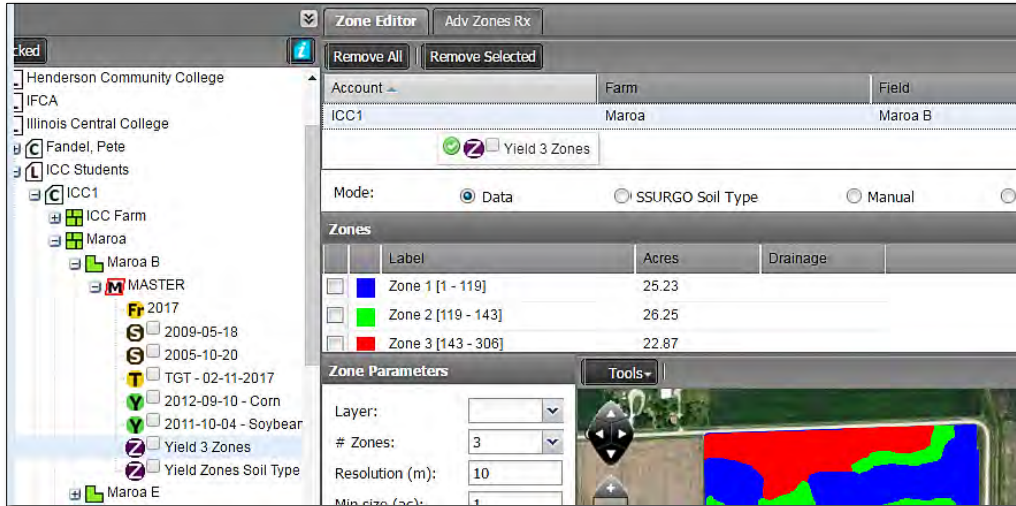


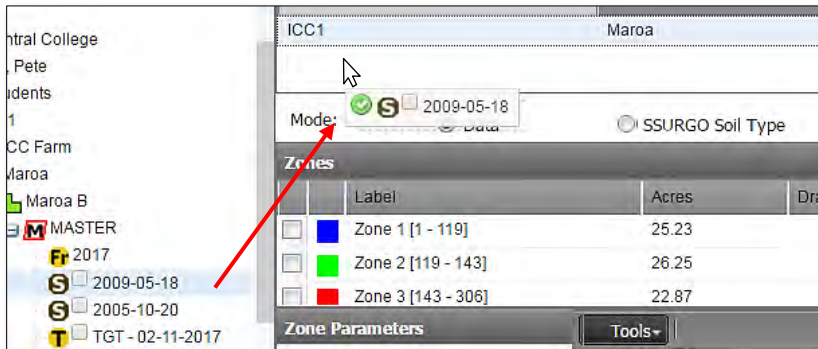
Advanced Zones Tab - Zone Editor / Modifying Zones by Soil Data Layer

1. Modifying / Editing Zones to Soil Data Layer.

- A. Drag a zone file up into the Account Window.
 - The colored zones will appear.

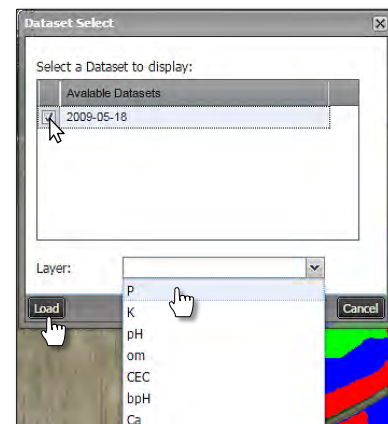
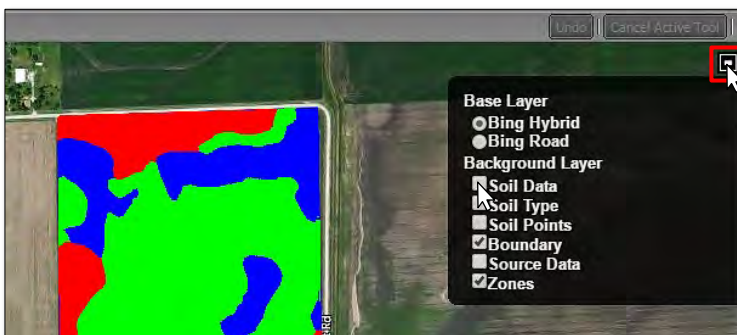


- B. To view soil analysis data, left click and hold on the desired soil test and pull up into the account window.

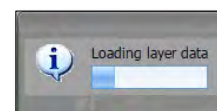


Note: I.F.A.R.M. allows multiple datasets in the account window. Users can pull in a zone, soil, yield, etc.

- C. In the mapping area, open the **Base Layer** box and select **Soil Data** (left).

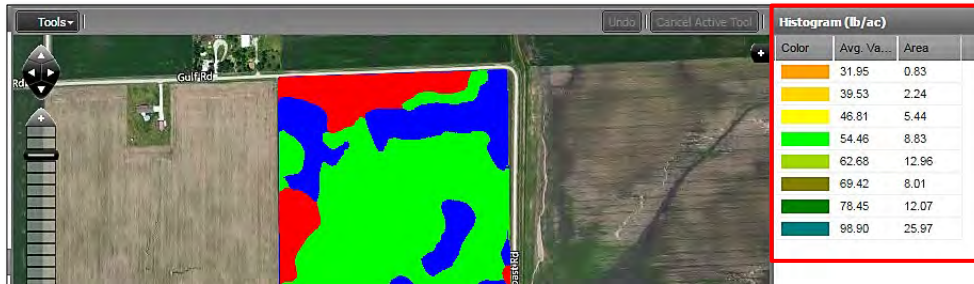


- A **Dataset Select** box will appear with the selected dataset.
- Click the dataset box. This will activate the Layer drop-down menu. Select the nutrient layer to make visible (right).
- Click the **Load** button.
- A **Loading layer data** notification will briefly appear.

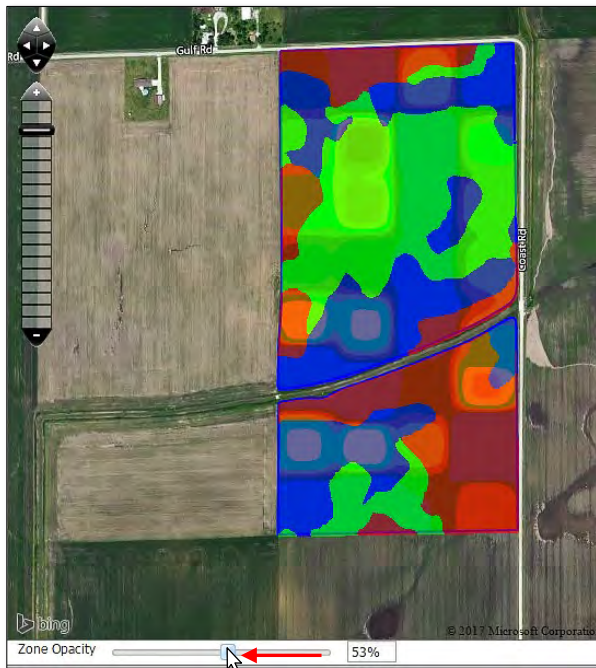


Advanced Zones - Zone Editor Tab / Modifying Zones by Soil Data Layer continued...

D. With the soil data loaded, note the representative histogram will appear.



E. To view the soil data through the zones, go to the transparency function and move the slider to the left.

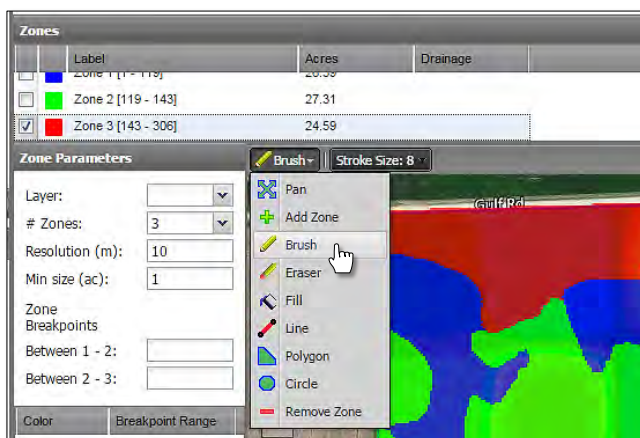


- The further left you slide the opacity bar, the more clearly the underlying layer appears.

Note: Regardless of how the visual appears, the zones are always the top layer.

F. Using the underlying data layer as a visual guide, users can use the editing tools to modify the zones.

- First, select the zone to modify by clicking in the selection box.
- Use the **Tools** drop-down menu to choose a desired tool (below).



- Brush tool.



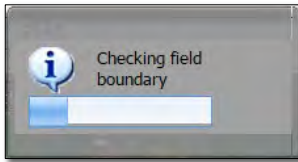
- Fill tool.

Advanced Zones - Zone Editor Tab / Modifying Zones by Soil Data Layer continued...

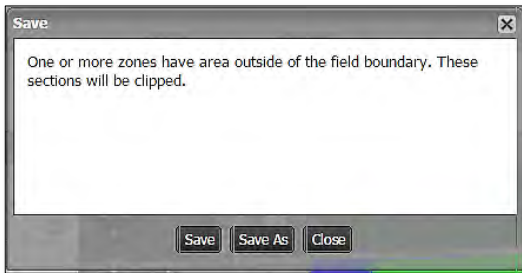
2. Saving the Zones.

A. Click on the **Save** button.

- A notification will appear showing **Checking field boundary**.

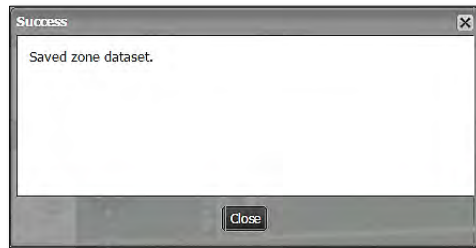
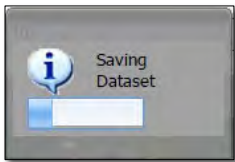


B. A **Save** option prompt will appear; giving the options to **Save** or **Save As**.



Note: I.F.A.R.M. checks the boundaries of zoned fields. If any part of the zones overlaps the boundary, the saving process will include clipping the zone to the boundary.

- If previously saved, the **Save** option will simply update the zone with any changes.
- When clicked, a **Saving Dataset** status indication will appear, then a **Success** confirmation.

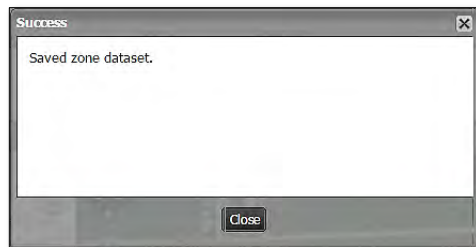
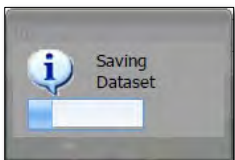


- If **Save As** is selected, a naming prompt will appear to allow the user to name the zone as desired.



Note: I.F.A.R.M. allows zones to be saved with the same names; meaning if you make a change, Save As and call it the same thing as the previous zone, I.F.A.R.M. will save an identical named zone in the tree.

- A **Saving Dataset** status indication will appear, then a **Success** confirmation.



C. Upon saving, the new or updated zone will appear as a purple "Z" icon under the field.

