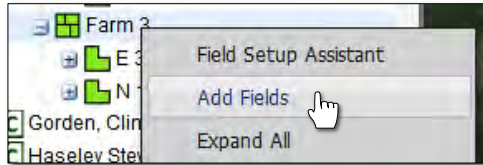


How to Create a New CLU Boundary

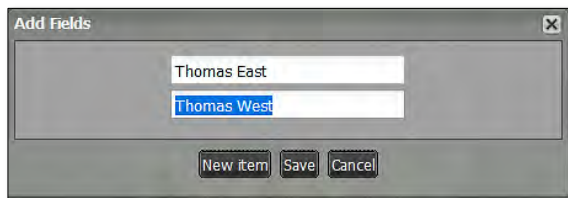
The New CLU Boundary function allows users to create boundaries automatically by filling and saving CLU perimeters.

1. **New CLU Boundary:** To use this feature, first create a new field.

A. Right click on the representative Farm and select **Add Fields**.

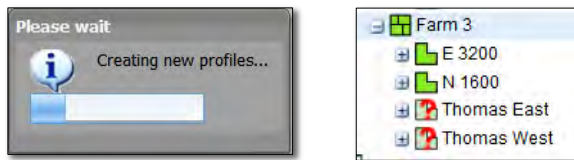


B. An indicator will appear asking to name the new field. Type in the desired name and click **Save**.

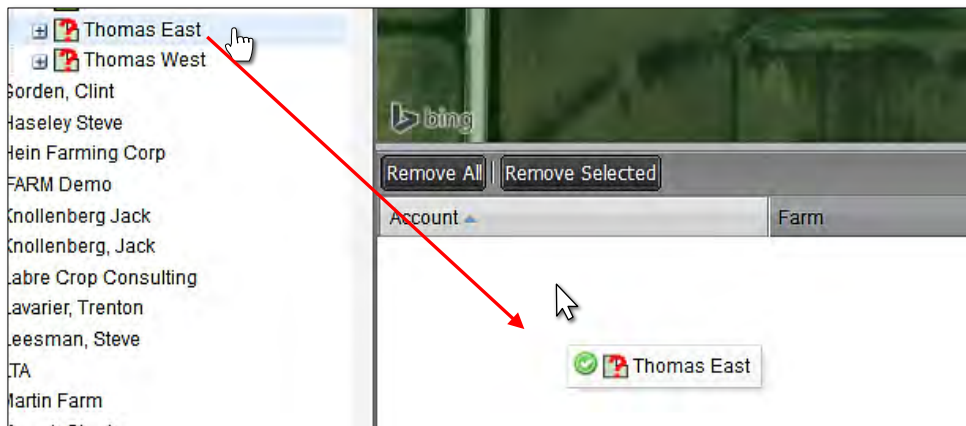


Note: Users can add more than one farm by clicking the **New Item** button. Every click will produce another naming window. Users can add up to 10 fields at one time.

C. A brief **Creating new profiles** indication will appear, then the newly named field(s) will appear under the designated farm. Note the field will have a question mark (?) designated, as it has no boundary defined yet.



D. Drag the new field(s) to the Account Window and release.



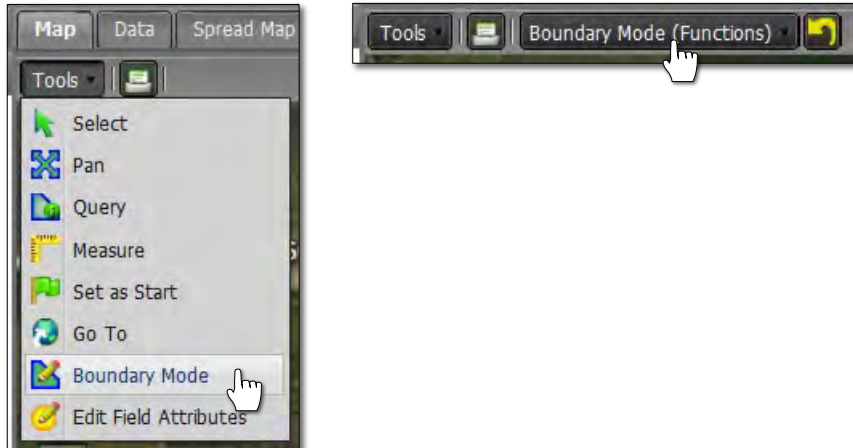
- The field(s) will show in the lower account window. No boundary will show in the map area.

Account	Farm	Field
Farmer, Joe	Farm 3	Thomas East
Farmer, Joe	Farm 3	Thomas West

New CLU Boundary continued...

2. Establishing Field Location.

- A. Use the Go To / Pan / Zoom tools to locate where the fields reside.
- B. Click on **Tools** drop-down menu. Click on the **Boundary Mode**. The **Boundary Mode (Functions)** tab drop-down menu will appear in the upper map window.

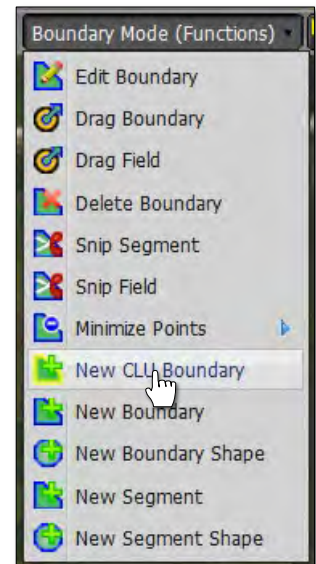


- C. In the Account Window, click on the first field. You will note it will highlight with a blue tint.

Account	Farm	Field
Farmer, Joe	Farm 3	Thomas West
Farmer, Joe	Farm 3	Thomas East

A mouse cursor is pointing at the first row of the table.

- D. Click on the Boundary Mode drop-down list and view the options. Click on the **New CLU Boundary** selection (right).
 - Once selected, the menu will close.
 - Note the yellow outlined CLU perimeters will appear (below).

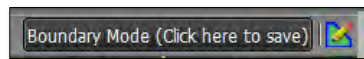


New CLU Boundary continued...

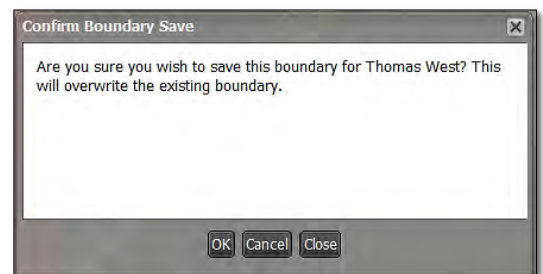
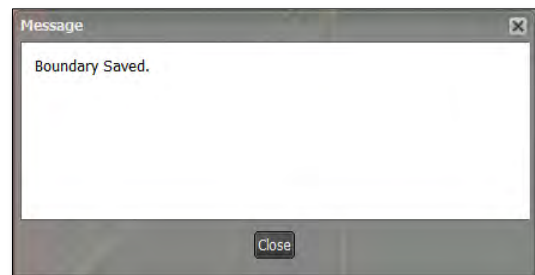
- E. Locate the desired field perimeter and left click inside the area. It will fill, displaying as a red field boundary (below left).



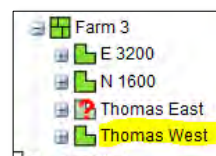
- F. If the boundary is to your liking, save it by left clicking on the **Boundary Mode (Click here to save)** button in the upper right of the map screen.



- A **Confirm Boundary Save** indicator will appear. Click **OK** to save (right).
- Shortly after, a **Boundary Saved** message will appear. Close it.



- G. Note the field now shows as a full boundary in the tree.

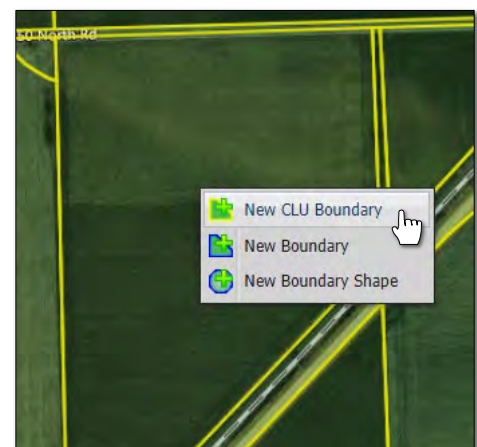


3. Right Click option.

- A. Once in Boundary Mode, users can also perform the same function for creating CLU boundaries by **right clicking** on the map.

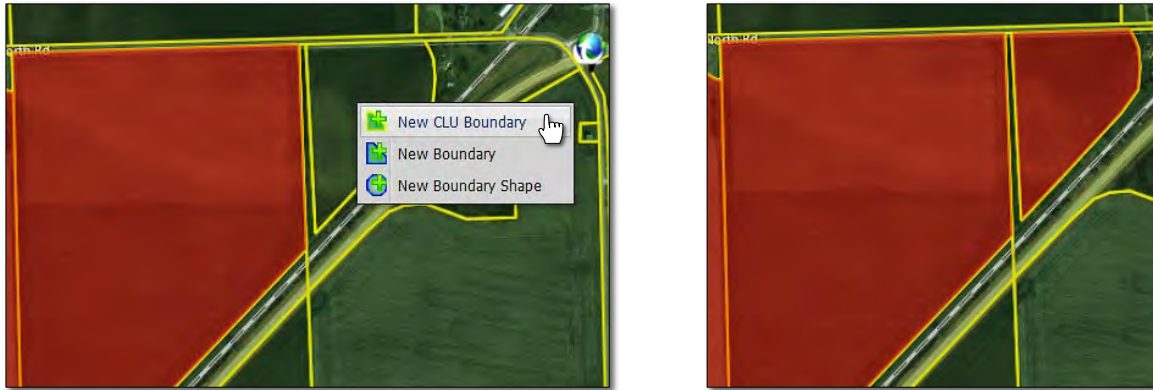
Note: Make sure the correct field is selected in the Account Window (blue tinted highlight).

- Right click in the needed field (right). An option box will appear allowing the user to choose boundary selections.
- Select **New CLU Boundary**.
- The boundary will fill in with red (see next page).

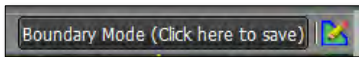


New CLU Boundary continued...

- B. If the field has multiple segments, users can continue to use the **right click** function to sequentially fill the adjacent segments, creating a multi-section or composited CLU field.



- C. If the boundary is to your liking, save it by left clicking on the **Boundary Mode (Click here to save)** button in the upper right of the map screen. Once finished saving, the field will now appear in the tree as a complete boundary.



- D. The field will now appear in the profile tree as a completed boundary.



Note: It is to be expected the CLU layers may not reflect the actual field boundaries / acres. They are meant to get initial GPS into the profile tree to populate farms with fields, and to create work orders. It should be understood actual higher quality GPS boundaries will be run and loaded back into the system (overwriting these initial boundaries).

Users can also use the Map Tab editing tools to correct / modify CLU boundaries. Go to the How to Edit Boundaries tutorial for instructions.

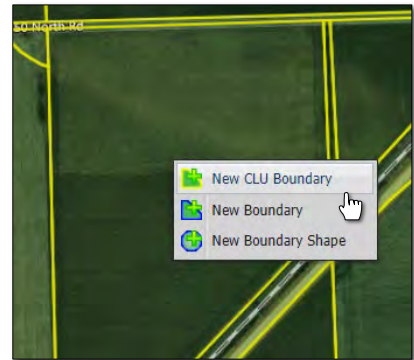
3. Revert to Original: Before you save. In the event you are working on creating a boundary and decide to start over...

- A. If you are **not** satisfied with your boundary and want to stop the exercise or start over, click on the **Revert** button. This will produce a message asking if you want to return to the original boundary (below center). Click **Yes** if you want to return the boundary to its original state.

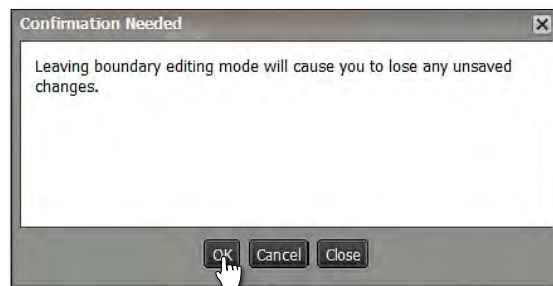
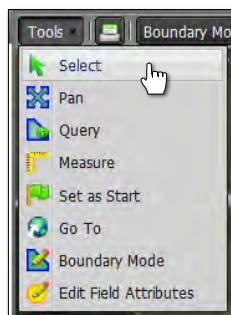


New CLU Boundary continued...

- B.** The current filled boundary will empty. Boundary Mode will stay active. To start over, right click within the boundary and repeat the New CLU Boundary command (right).



- C.** Users can also revert the boundary by clicking on the **Select** option under the Tools tab. This will produce a message asking if you want to leave the boundary mode and disregard any changes (below right).



- D.** Click **OK** if you want to end that work session.
- Be advised this takes the user completely out of the Boundary Mode.
 - To continue, click the Tools drop-down menu and reselect Boundary Mode.
 - Click on the field in the lower account window and proceed.