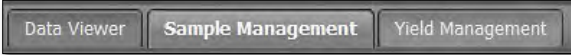


Data Tab - Sample Management - Loose Samples

The Data Tab provides functions for working with field data. To activate the options, select the **Data Tab**.

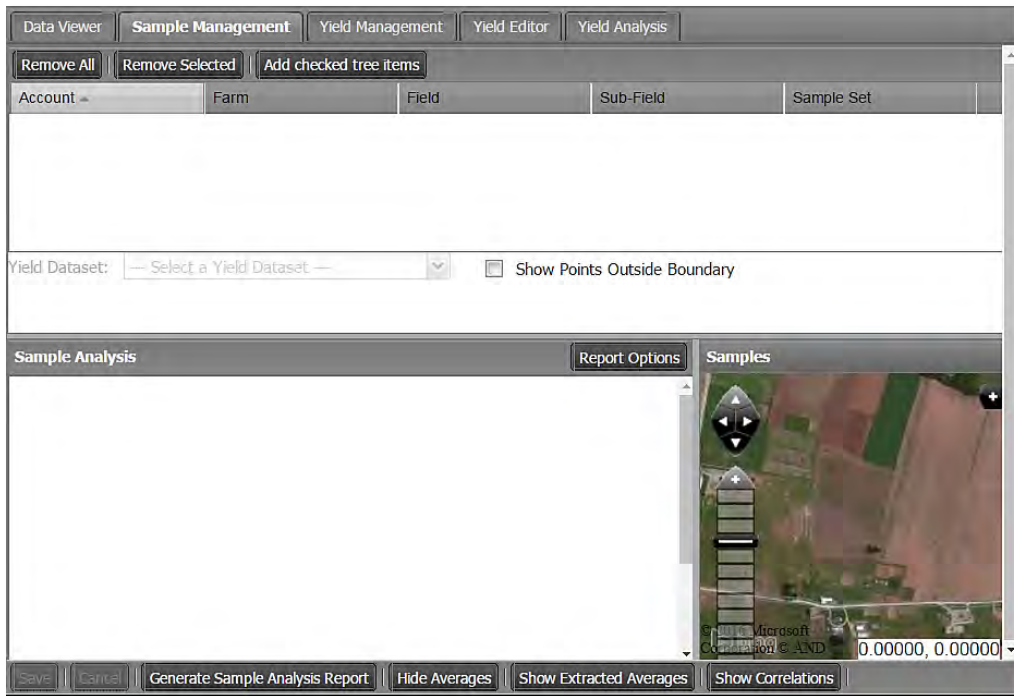


The following functions / tabs will be displayed.

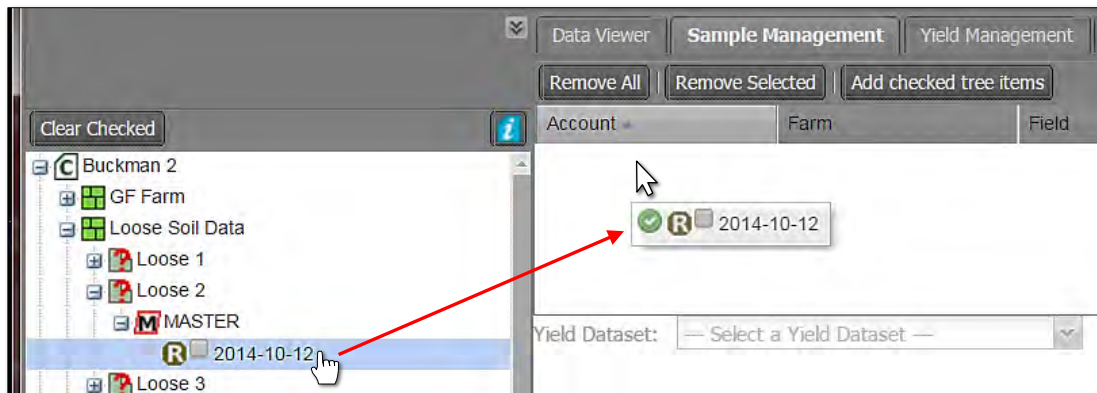


1. **Sample Management:** This option allows you view / print soil analysis data / reports per field.

A. Click on the **Sample Management** tab. The following page/options will be displayed.



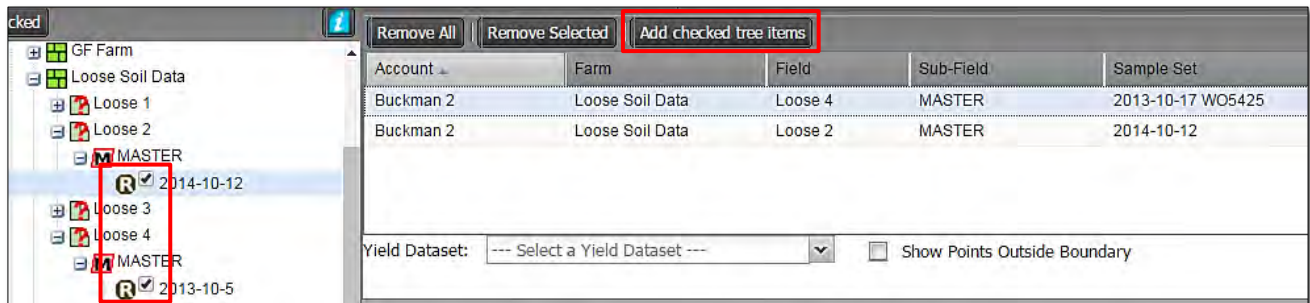
B. From the I.F.A.R.M. customer listing window, click and hold a Loose Sample file **R** and drag up to the **Account Window**. You can drag over individual or multiple files.



- The files will appear in the account window and start the loading process.

Sample Management - Loose Samples continued...

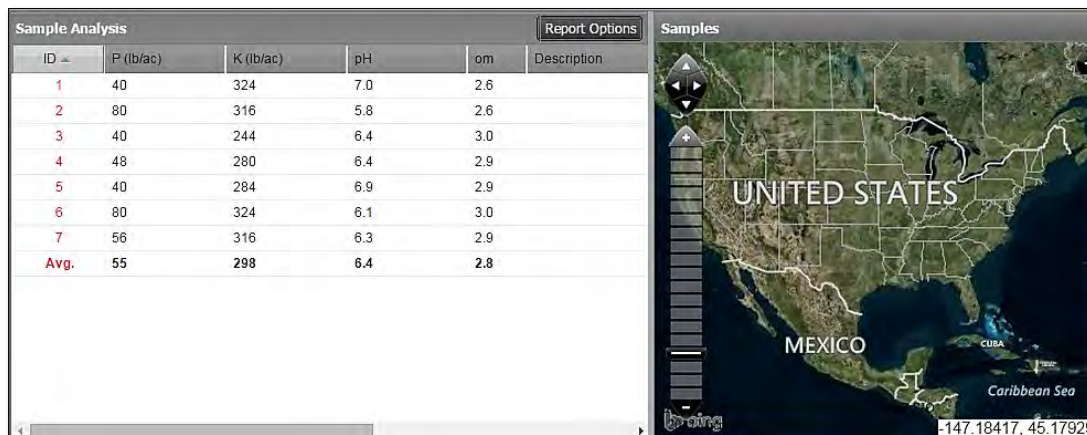
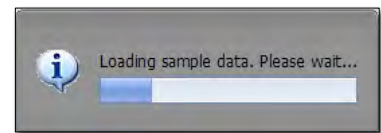
- The data file check boxes can be used as well. Click the box(es) then select **Add checked tree items**.



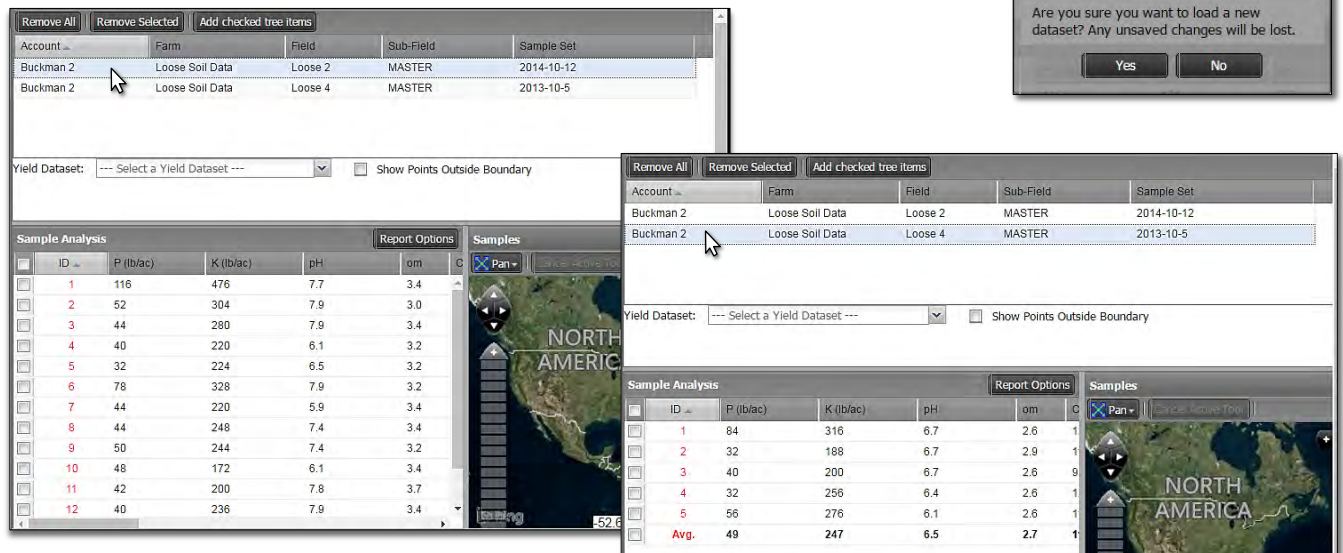
Note: The Add checked tree items feature will not work until you have pulled over a soil file previously.

C. The sample analysis data will be displayed in the left window.

D. View Points. Loose samples are not tied to a field boundary or sample point locations. Only if the data is merged with a boundary / points will a map display.



E. Viewing Multiple Entries. If multiple datasets have been entered, to view a specific set, simply click on it. The following notice will appear (right). Clicking **Yes** will display the results.



Sample Management - Loose Samples continued...

F. The sample map window is an interactive window, meaning you can click and hold on the grey vertical bar and drag the window open to the left or right. This will expand the data window and allow you to spread the data columns.

ID	P (lb/ac)	K (lb/ac)	pH	Description
1	40	324	7.0	2.6
2	80	316	5.8	2.6
3	40	244	6.4	3.0
4	48	280	6.4	2.9
5	40	284	6.9	2.9
6	80	324	6.1	3.0
7	56	316	6.3	2.9
Avg.	55	298	6.4	2.8

- The columns can be rearranged as well. Left click and hold on a column and move it to the left or right.
- Note there will be two blue arrows indicating where the column will reside. By letting go of the mouse left click, the column will be repositioned.

ID	P (lb/ac)	pH	K (lb/ac)
1	146	5.7	328
2	126	pH	272
3	80	5.9	252

ID	pH	P (lb/ac)	K (lb/ac)
1	5.7	146	328
2	6.0	126	272
3	5.9	80	252

Note: Repositioned columns will not show on the report, only on the visual screen. The PDF report is a static report.

G. Users have the option to show / hide analysis averages:

- By default, the test averages show automatically at the bottom of the list when the data loads.
- To hide the averages, click on the **Hide Averages** button. Note the average row is removed and the button changes to **Show Averages**. Clicking Show Averages puts the row back.
- If the averages are hidden, they will not print out on the Sample Summary Report.

30	6.6	54	184	3.2	11.7	7.0	3234	588
31	6.3	115	300	3.0	16.3	7.0	3738	1029
32	6.1	132	344	3.2	19.7	6.8	4620	1008
Avg.	6.3	110	317	3.1	19.5	6.8	4779	988

30	6.6	54	184	3.2	11.7	7.0	3234	588
31	6.3	115	300	3.0	16.3	7.0	3738	1029
32	6.1	132	344	3.2	19.7	6.8	4620	1008

- Sample Management also offers **Extracted Averages**. This feature removes the most extreme sample values (high and low) to give a truer field average.

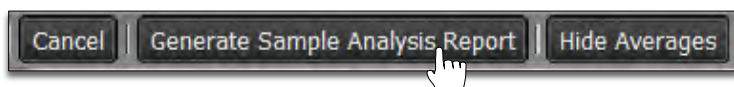
30	6.6	54	184	3.2	11.7	7.0	3234	588
31	6.3	115	300	3.0	16.3	7.0	3738	1029
32	6.1	132	344	3.2	19.7	6.8	4620	1008
Avg.	6.3	110	317	3.1	19.5	6.8	4779	988
Extr. Avg	6.2	107	323	3.1	19.8	6.9	4679	975

- Clicking on Hide Extracted Averages will remove the column.
- If the averages are hidden, they will not print out on the Sample Summary Report.

Sample Management - Loose Samples continued...

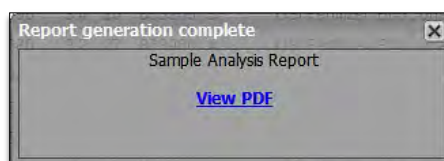
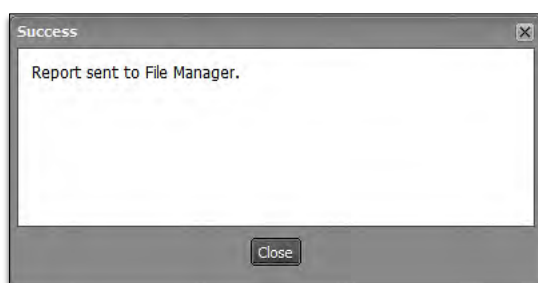
2. Generate Sample Analysis Report.

- A. If you want to output a PDF report of the field boundary with the loose analysis data, click on the **Generate Sample Analysis Report** button.




Note: As mentioned previously, if the user wants the analysis averages hidden, they can click the Hide Averages button. If not, the averages will print out on the report.

- B. The following indication will appear stating the report has been saved to the File Manager. After a few seconds, another indicator will appear. Users can click on **View PDF**, or close out of it and open it in the File Manager at another time.



- C. If **View PDF** is selected, a 1-pg PDF report will display showing the test data results.
- Users can print or save the PDF from the PDF software.



Soil Test Results

Location: Henderson Community College **Farm:** Home Farm
Customer: Buckman, Tyler **Field:** Halpin 65
Dates: 2014-11-04 **Acres:**

ID	P (lb/ac)	K (lb/ac)	pH	om
1	40	324	7.0	2.6
2	80	316	5.8	2.6
3	40	244	6.4	3.0
4	48	280	6.4	2.9
5	40	284	6.9	2.9
6	80	324	6.1	3.0
7	56	316	6.3	2.9
Avg.	55	298	6.4	2.8