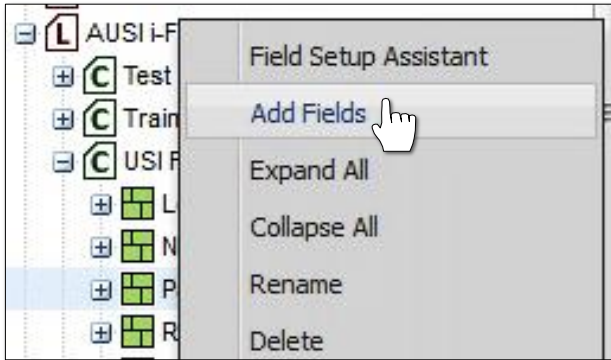


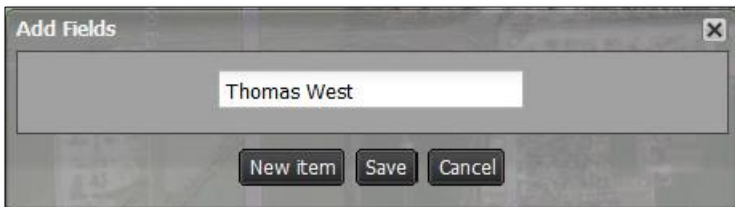
How to Create a New Boundary Using the Shape Tool

1. New Boundary Shape: New Field.

A. To create a new field, right click on the representative Farm and select **Add Fields**.



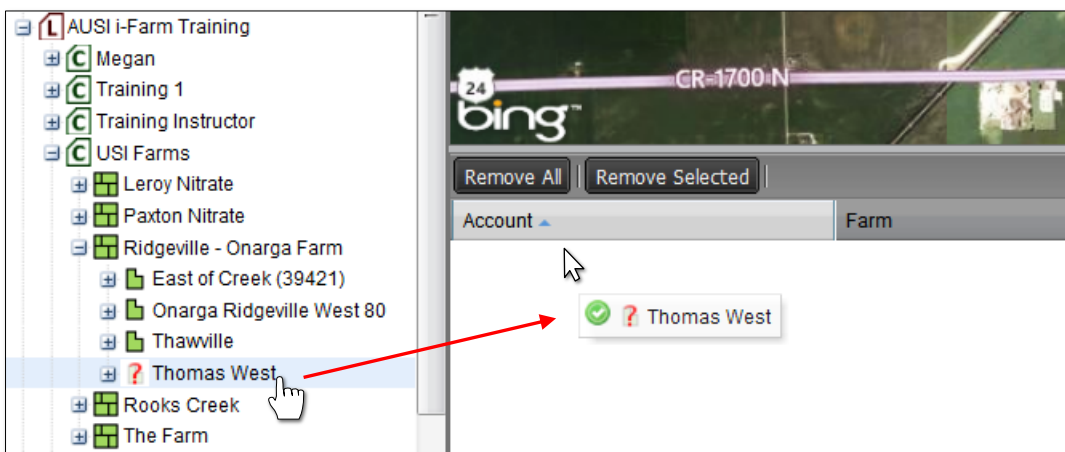
B. An indicator will appear asking to name the new field. Type in the desired name and click **Save**.



C. The newly named field will appear under the designated farm. Note the field will have a question mark (?) designated, as it has no boundary defined yet.



D. Drag the new field to the Account Window.

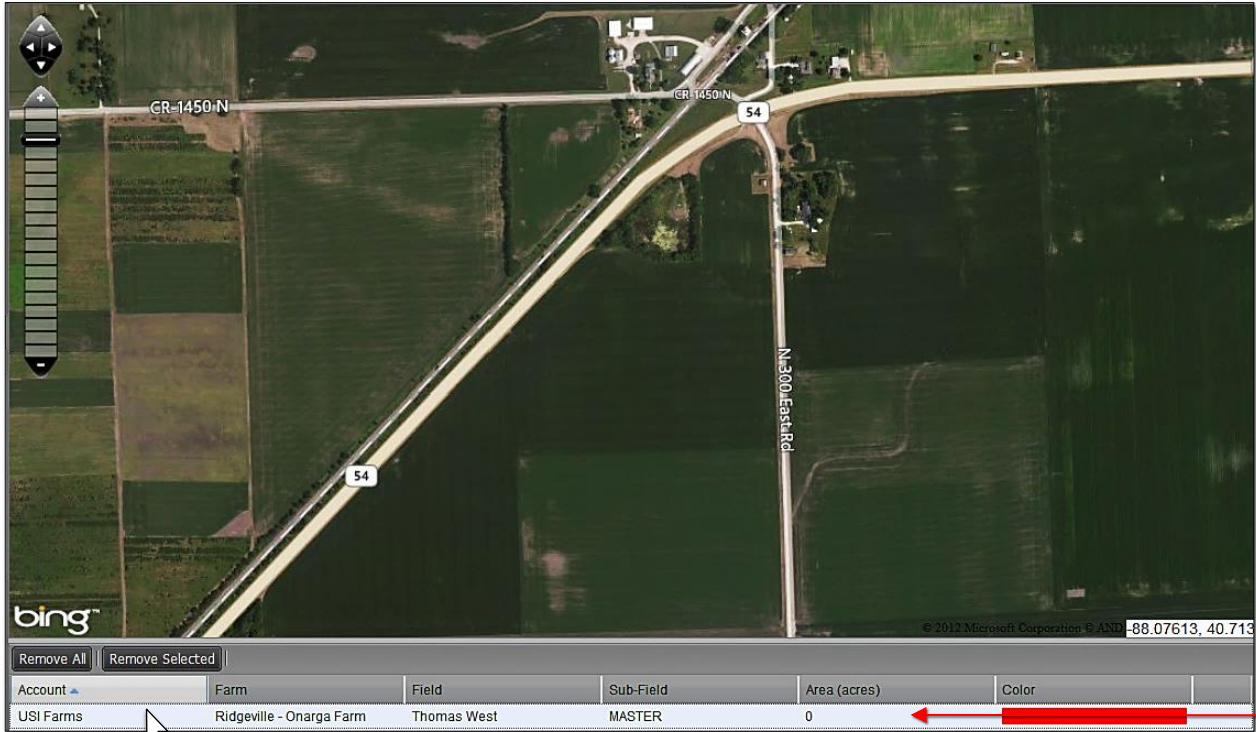


New Boundary Shape continued...

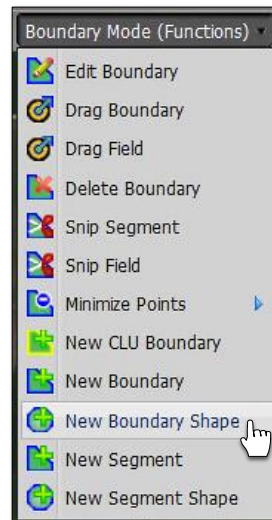
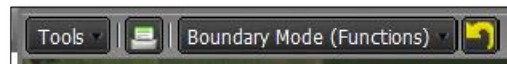
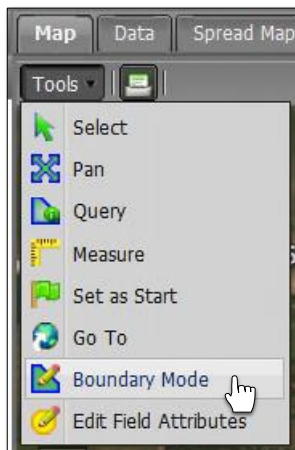
2. Establishing Field Location. Using the map navigation tools, locate the area where the new field is located.

A. Use the Pan / Zoom tools to define the new boundary area.

B. Go to the Account Window and select/highlight the new field. It will display a blueish background.



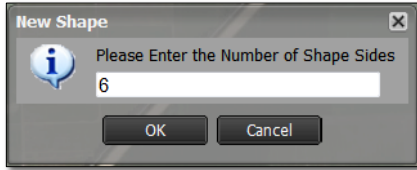
C. Click on **Tools** drop-down menu. Click on the **Boundary Mode**. The **Boundary Mode (Functions)** tab drop-down menu will appear in the upper map window.



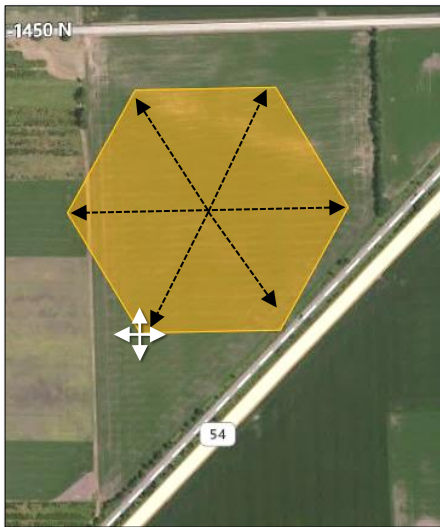
D. Click on the Boundary Mode drop-down list and view the options. Click on the **New Boundary Shape** selection (right).

New Boundary Shape continued...

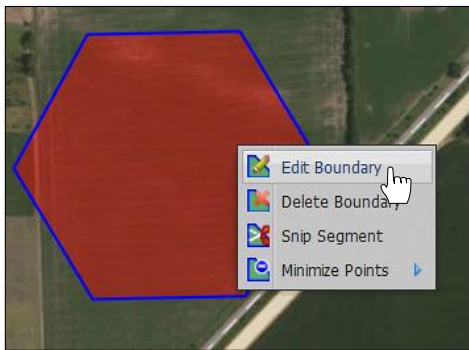
- E. As soon as you choose **New Boundary Shape** function the menu will close and an indicator will appear asking the user to enter the number of sides for the shape to be created.
 - Enter a number of sides that reflect the boundary to be created, then click **Ok**.



- F. Click and hold the mouse within the area of the new boundary and drag slowly outwards. The designated number of shape sides will be created and expand as you drag the mouse.
 - Once the shape is to an editable size, release the mouse and the shape will turn red (right).



- Under the Boundary Mode menu, select **Edit Boundary**, or right click on the shape and select **Edit Boundary**.



- Click on the field. The boundary points will appear. Click, hold and drag the points to define the boundary perimeter.
- Continue adjusting the points until you are satisfied with the boundary.
- Note a green node will appear every time a point is edited.

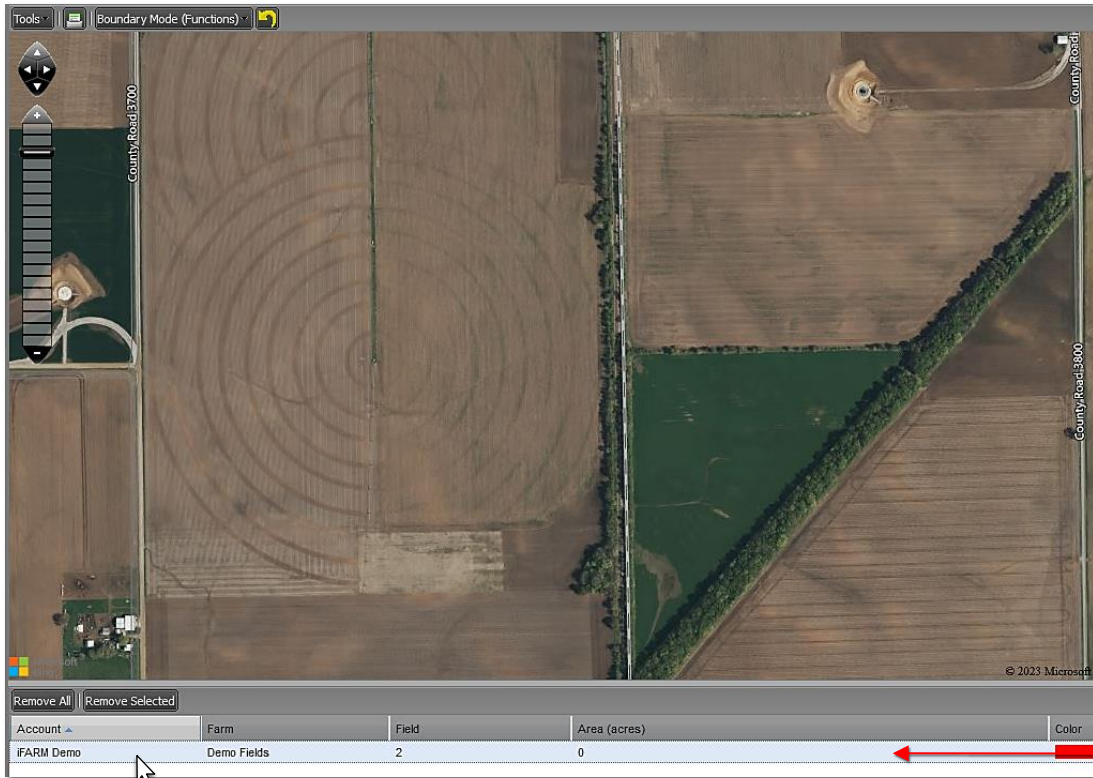


New Boundary Shape continued...

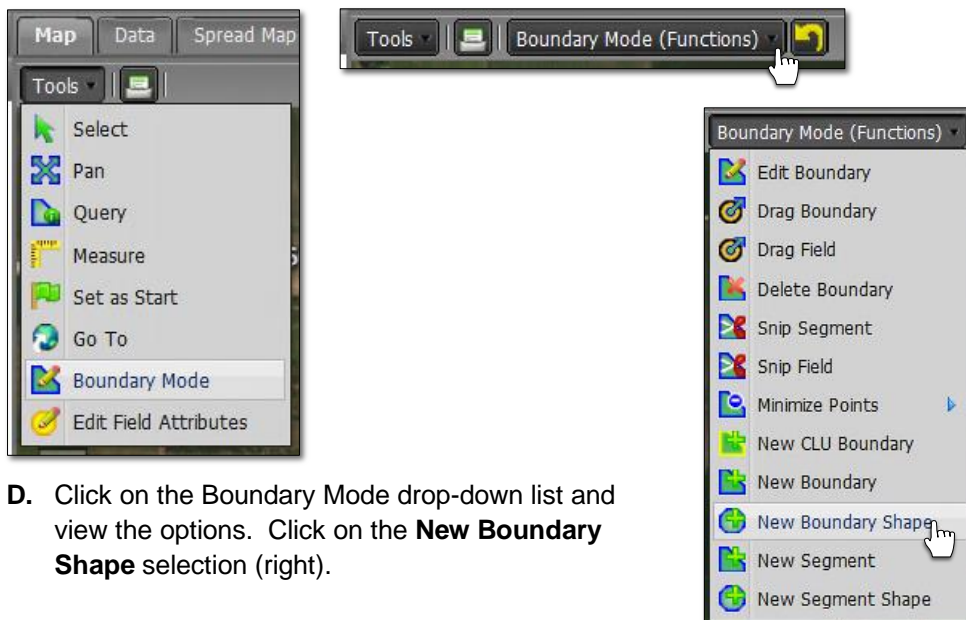
3. Creating a Circular Boundary / Pivot. Using the map navigation tools, locate the area where the new field is located.

A. Use the Pan / Zoom tools to define the new boundary area.

B. Go to the Account Window and select/highlight the new field. It will display a blueish background.



C. Click on **Tools** drop-down menu. Click on the **Boundary Mode**. The **Boundary Mode (Functions)** tab drop-down menu will appear in the upper map window.

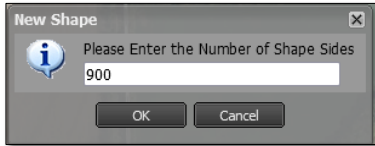


D. Click on the Boundary Mode drop-down list and view the options. Click on the **New Boundary Shape** selection (right).

New Boundary Shape continued...

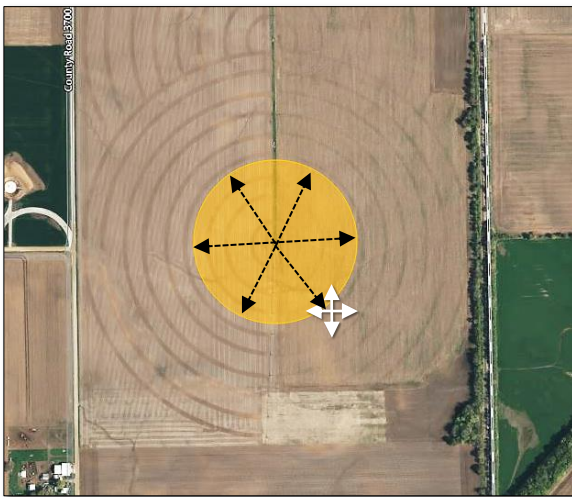
E. As soon as you choose **New Boundary Shape** function the menu will close and an indicator will appear asking the user to enter the number of sides for the shape to be created.

- For a circular boundary / pivot, enter a large number; 900 is suggested, then click **OK**.



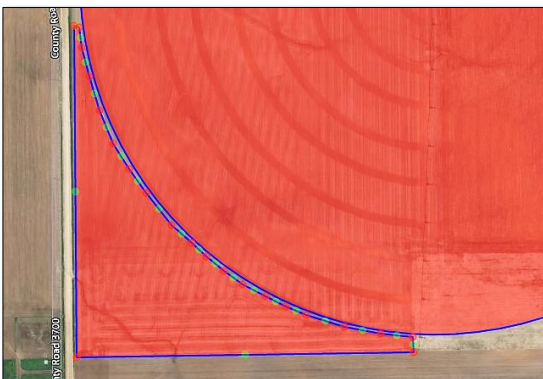
F. Click and hold the mouse within the area of the new boundary and drag slowly outwards. The circular shape will be created and expand as you drag the mouse.

- Once the shape is to the field edge, release the mouse and the shape will turn red (right).



G. If the boundary is as desired, we advise at this point to **Save** the circular boundary (next section).

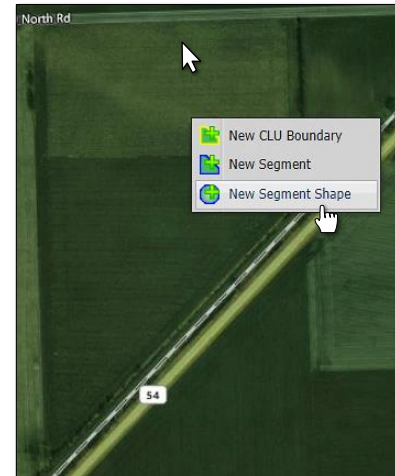
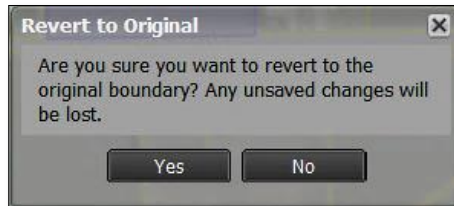
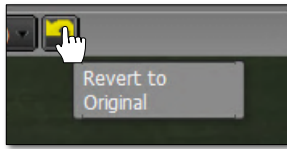
- With so many perimeter points, it will be tedious to edit the boundary. In most cases, users add to the edges of the field with the Add Segment tool (below).



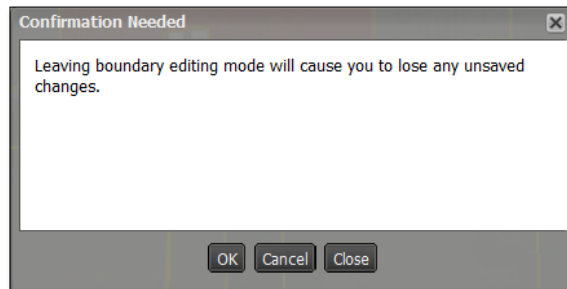
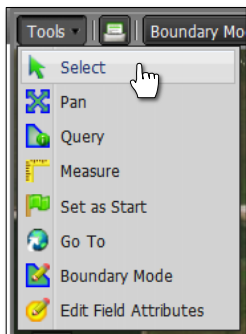
New Boundary Shape continued...

4. Revert to Original: Before you save. In the event you are working on creating a segment and decide to start over...

A. If you are **not** satisfied with your boundary and want to stop the exercise or start over, click on the **Revert** button. This will produce a message asking if you want to return to the original boundary (below center).



- B.** Click **Yes** if you want to return the boundary to its original state.
- C.** The current filled boundary will empty. Boundary Mode will stay active. To start over, right click within the boundary and repeat the **New Segment Shape** command (right).
- D.** Users can also revert the boundary by clicking on the **Select** option under the Tools tab. This will produce a message asking if you want to leave the boundary mode and disregard any changes (below right).



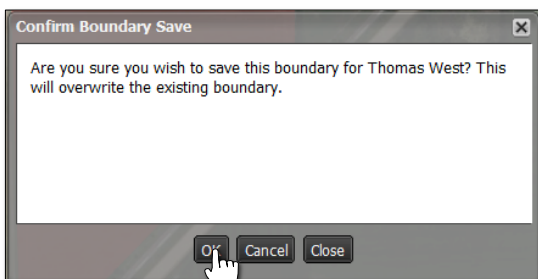
E. Upon clicking **OK**, the field boundary will be removed. To start the New Boundary process again, click on the Boundary Mode in the Tools tab drop-down menu and choose the New Boundary Shape option under the drop-down menu.

5. Saving a New Boundary:

A. If satisfied with the new boundary, click on the **Click Here to Save** button.

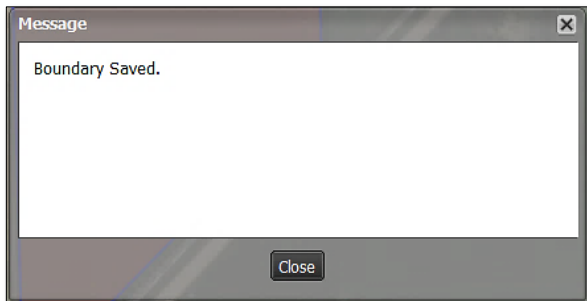


B. An indicator will display to confirm saving the boundary. If you want to proceed, click **Ok**.



New Boundary Shape continued...

C. A **Boundary Saved** notice will appear. Note the field will be indicated with a **blue** outline (below right).



D. Go to the Farm and note the new field will now display as a green field icon (vs. ? mark).

- Sample data can now be imported and associated with the bounded field.
- The boundary can also be exported for use outside the program.

