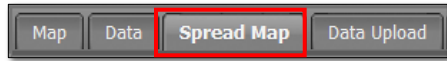
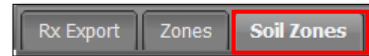


Spread Map Tab - Soil Zones

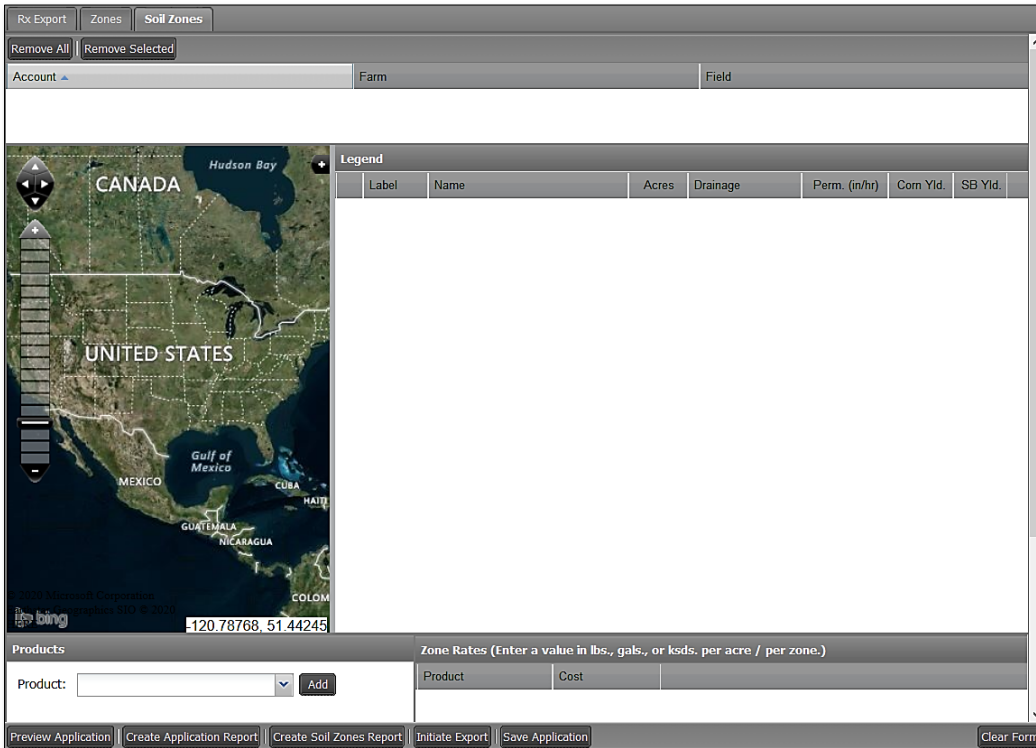
The **Spread Map** page provides functions for creating spread maps. To activate the options, select the **Spread Map** tab.



1. The **Rx Export** tab will display immediately. Select the **Soil Zones** tab.

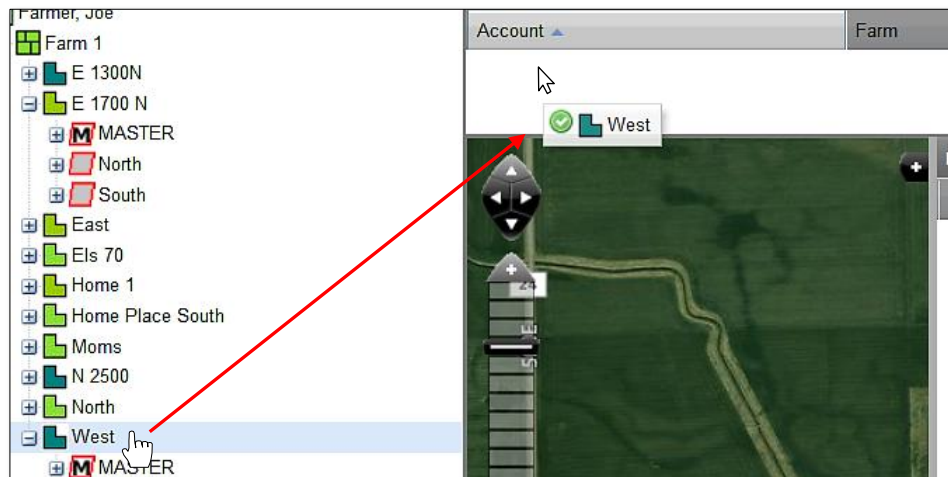


- A. The **Soil Zones** page will display. This function allows you create flat rate prescription zones within a field per product attribute, based on soil type.



2. **Loading a Field:** From the customer index window, click and hold a **Field** file and drag up to the **Account** window. The field holds the SSURGO soil type information (not the soil test).

- A. This program function can only work with one data set at a time, meaning you cannot process multiple files at a time.



Soil Zones Tab continued...

- B. Once the Field is dragged in the Account window, a brief indicator will display stating the system is **Getting the soil zones...** then the field SSURGO soil map will display.



- Also, a legend will display with soil type designations / acres / drainage / permeability / yield expectations.

3. **Products.** This area allows users to select the specific product to spread, plus indicate the cost (option) and enter the desired amounts for each zone.

A. **Products:** Using the drop-down menu, select the product to be spread for the chosen soil type zone.

- For fertilizer, enter pounds of product per zone.
- Seed populations can be chosen if **variable rate planting files** are needed.
- Users should enter **seed population** rates with 2 digits, as the values seed in KSDS. (i.e. 28 for 28,000; 32 for 32,000, etc.).

28%	N 28%
32%	N 32%
DAP	N 18% P 46%
ESN	N 44%
Lime	Ca 100%
Lime 85	Ca 85%
ME SZ	N 12% P 40% Zn 1% S 10%
NH3	N 82%
Potash	K 60%
Potash 62	K 62%
SOP 0-0-50	K 50%
Seed Corn	
Urea	N 46%

Product:

- B. Click on the **Add** button. You will see the attribute show up under the **Product** column (to the right).

Product	Cost	Zone 1	Zone 2	Zone 3	Zone 4	Zone 5	Zone 6
Seed Corn	300	32	34	35	31	28	32

- C. If desired, click under the **Cost** column and enter a product cost.

- D. Click under each **Zone** column and enter a value in **lbs.** or **ksds** that will be spread per acre / per soil zone.

4. **Application Cost \$ / acre.** This option allows the user to enter a cost per acre to spread / plant the product.

A. Click in the entry box and enter a value (optional).

Application cost \$/acre:

Controller Type:

Crop Year:

- B. **Controller Type:** Use the drop-down and choose the controller type needed.

Products

Product:

Nutrient:

Filter by layer:

- AgView
- Agco Falcon TIFF
- Agco Task Controller
- Case Voyager 2
- Field Star
- FieldLink
- GS2 Shape
- John Deere Greenstar 1
- John Deere Greenstar 2
- MidTech
- Raven Viper
- Shapefile
- SiteMate
- Trimble AgGPS 170
- Trimble FMD

Application cost \$/a:

Controller Type:

Soil Zones Tab continued...

C. Crop Year: The current year shows by default. If a different year is needed, use the drop-down and choose the needed crop year.

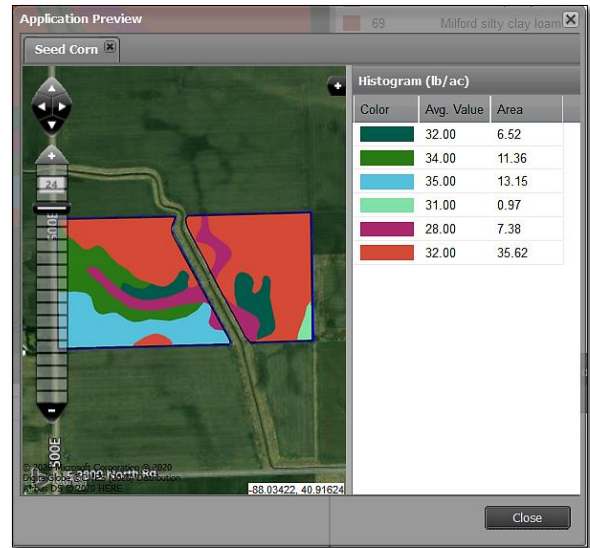
Filter by layer:	2022
	2021
	2020
	2019
	2018
	2017
Application cost \$/acre:	2016
Controller Type: Shaper	2015
Crop Year:	2020

5. Preview Application. This option allows the user to see a preview of the application map before it's created.

A. Click on the **Preview Application** button.



- After a few seconds a window will appear showing the soil zone map and histogram (right).
- Click on **Close** to end the preview.

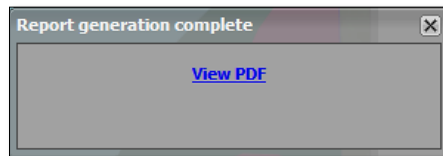
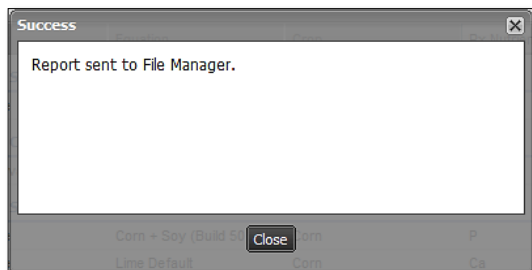


6. Create Application Report. This option allows the user to create a PDF file of the application map and product recommendation.

A. Click on the **Create Application Report** button.



- The following indicator will briefly appear informing the report has been sent to the **File Manager**. Shortly after, a **Download Report** prompt will display.



B. Use the browser options to open / download the file.

Soil Zones Tab continued...

C. If opened, a multi-page PDF will display; including map, product totals and summary page.

Seed Corn Application Report
 Customer: Farmer, Joe Farm: Farm 1 Acres: 74.87
 Field: West Crop Year: 2020

Application Parameters

Field	Ref	Product	Nutrient	Min Mch	Act Min Rate	Act Max Rate	Prod Cost	App Cost/Ac
1		Seed Corn			28 kdsds/ac	35 kdsds/ac	\$300.00/bag	\$0.00

Application Results

Field Name	Ref #	Prod	App	App	Product Cost	App Ac	App Cost	Total Cost
1		Seed Corn	2,432.07 kdsds	30.40 bags	\$9,120.27	75.01 ac	\$0.00	\$9,120.27

Total: \$9,120.27
Avg. Cost Per Acre: \$121.58

Application Summary

Customer(s): Farmer, Joe Field(s): West
 Farm(s): Farm 1 Sub-Field(s): MASTER

D. Users can print or save a copy of the report from the PDF software.

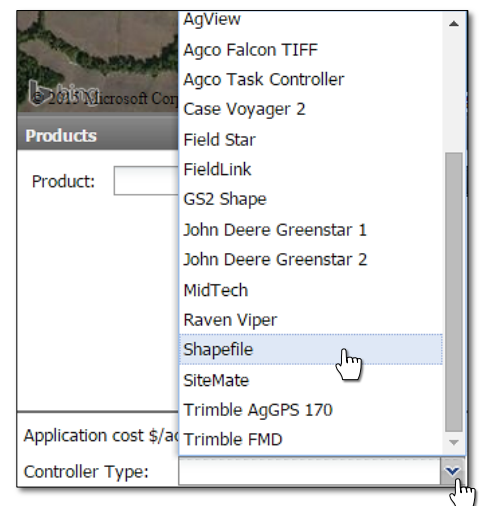
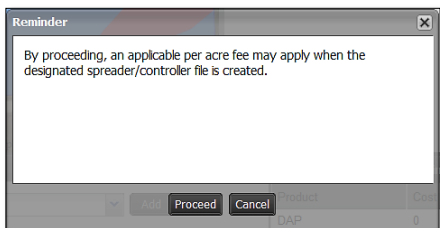
7. **Initiate Export.** This function allows users to convert and download the application / spread data into files that can be imported into a spread Controller.

A. Select the controller device from the drop-down menu (right).

B. Click on **Initiate Export** button.

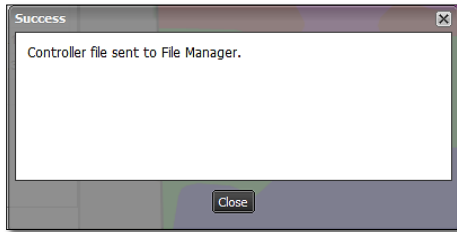


- In indicator will appear indicating an applicable charge may apply. If you want to proceed with making the file(s), click **Proceed** (below).

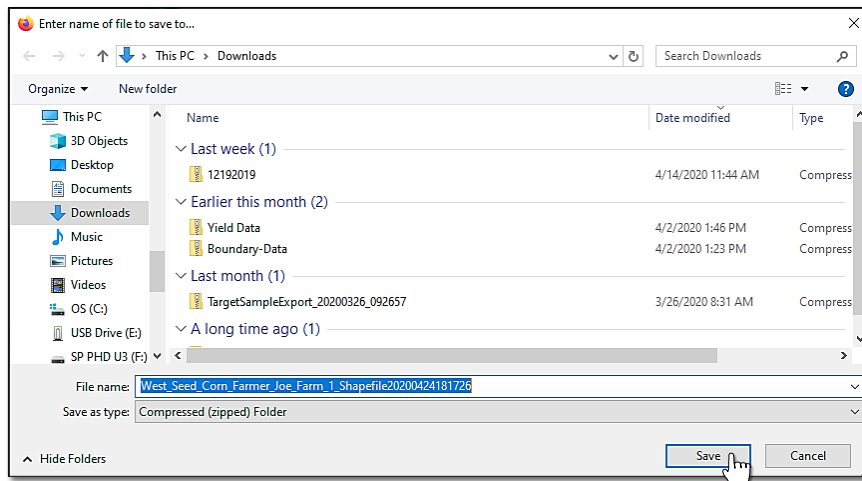


Soil Zones Tab continued...

- The following indicator will briefly appear informing the report has been sent to the **File Manager**. Shortly after, a **Download Report** prompt will display.

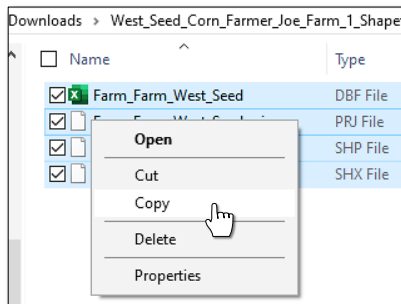


- C.** If the user chooses to open immediately, click the **Download** link. Depending on the browser used, the files will open to be saved to a specific location. Browse to find the save location and click on **Save**.

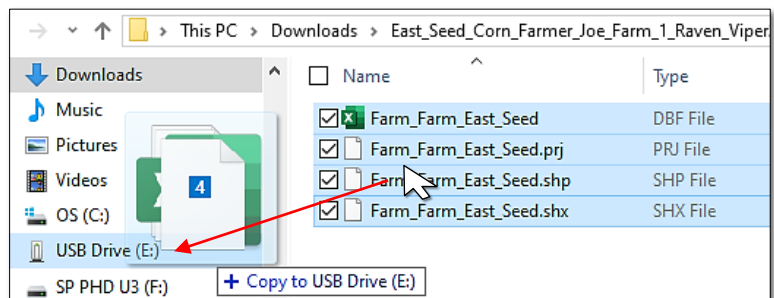


Note: Only the controller files are created. The PDF application report does not get saved with the files.

- D.** Users have several options to move / copy the files to other locations:



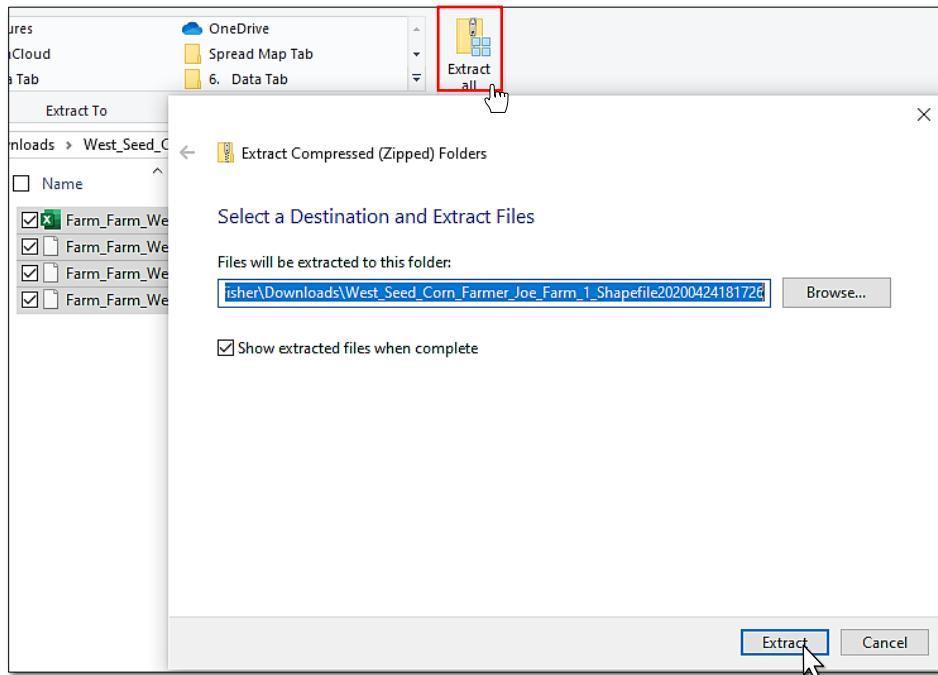
Select all files, right click - copy and go to the other location and right click - paste.



Select all files, left click and hold... drag the files to a separate drive and release. The files transfer.

Soil Zones Tab continued...

- E. Click the **Extract all** link. Browse to the folder of choice and click **Extract**. The files will be moved to the location.



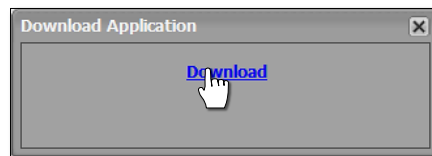
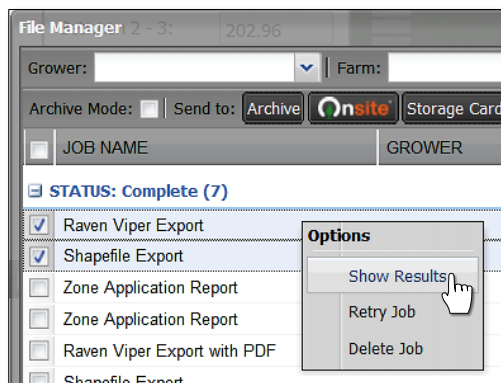
- 8. **File Manager**. Users can open controller files from the File Manager as well.

- A. Open the File Manager by selecting it from the upper right link buttons.



- B. The File Manager will open.

- C. Right-click on the needed controller file. Select **Show Results**.

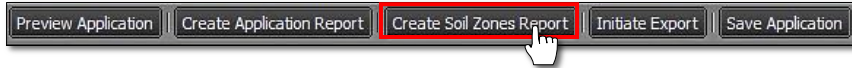


- D. Follow the same procedures to open and copy files where needed.

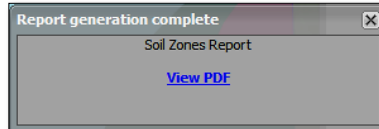
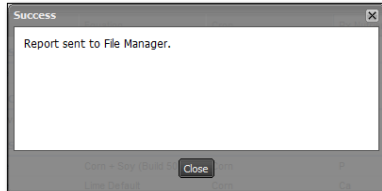
Soil Zones Tab continued...

9. Create Soil Zones Report. This option allows the user to create a PDF file of the soil type map and corresponding legend.

A. With a field populated in the account window, click on the **Create Soil Zones Report** button in the lower end of the page.



- The following indicator will briefly appear informing the report has been sent to the **File Manager**. Shortly after, a **Download Report** prompt will display.



- Users have the option to open the file immediately or close the indicator and access the report in the **File Manager** later.

B. Use the browser options to open / download the file.

C. If opened, a 1-pg PDF will display. Users can print or save a copy of the report from the PDF software.

