

Managed Print Services (MPS) for labelling

The true cost per printed label



Managed Print Services (MPS) for labelling

The true cost per printed label

What is MPS for labelling?

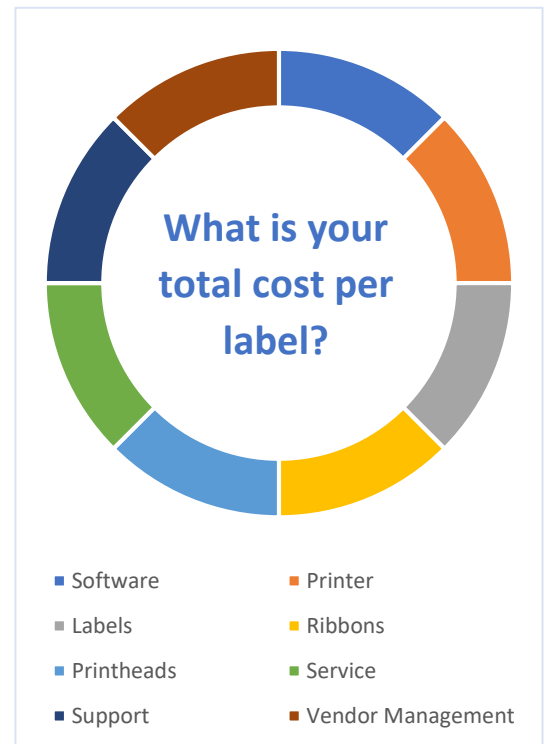
The definition of Managed Print Services (MPS) is quite broad. For many years business has acquired digital printing equipment such as copiers and multifunctional printers based on cost per page (or click). Recently some have used the term MPS in respect of providing maintained print services, a service agreement offering. The end objective for MPS for Labelling is simple: gaining visibility and control of your label printing solutions, which helps you reduce errors, increase productivity, reduce waste (labels and ribbons) and save money.

MPS for labelling means the “total cost per printed label”

The total cost per printed label for installation and training for software to design templates, on-demand and integrated printing solutions, centralise document management for quality assurance, centralise deployment of printing solutions to remote users anywhere, printers, service and support for software & printers and supply of printer media (labels, ribbons, printheads).

MPS for labelling includes

- **Label management system (LMS) software to optimise**
 - User roles and permissions
 - Centralised document management
 - Label template design
 - Printing solution design
 - Template and printing solution approval workflows
 - Web or Server deployment of printing solutions
 - System & Print History, including reprint function
 - Usage analytics by printer, user, label type and more..
 - Printer alerts
- **Visibility, downtime alerts and usage reports for any printers used for labelling**
 - Desktop thermal label printers
 - Print & Apply thermal label printers
 - Mobile label printers
 - Direct marking printers
- **Visibility and usage reports of all label templates**
 - Record each type of label template used and label life cycle management
- **Visibility of Thermal ribbons required (if thermal transfer printing is used)**
 - Label usage reports in LMS are used to calculate ribbons usage requirements
- **Visibility of Printheads required**
 - Label usage reports in LMS are used to calculate printhead usage requirements
- **Maintenance and support agreements for LMS software, existing or new printers**
 - Instant printer alerts in LMS to the support team reduces printer downtimes



Managed Print Services (MPS) for labelling

The true cost per printed label

MPS for labelling benefits

Standardise labelling across the business with a modern next generation label management system (LMS)

Optimise label printing solutions by reducing errors and increasing print productivity.

Digitise label lifecycle management with electronic approval workflows and revisions

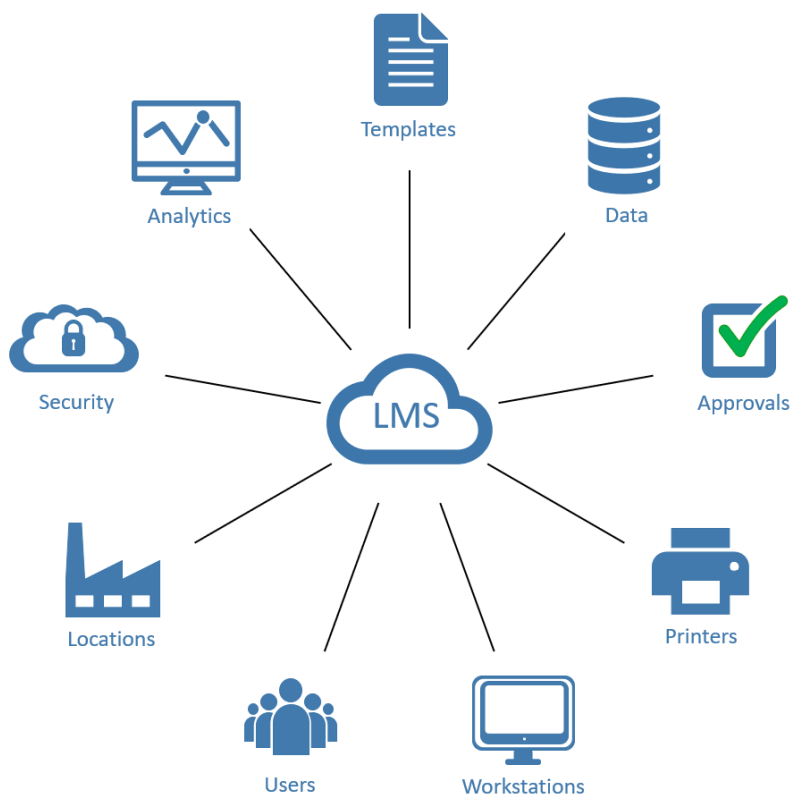
Gain visibility into print activity and trends to improve, control and manage your printers and print media.

Streamline operations with support for multiple printer brands and models.

Reduce material waste receiving supplies when needed

Cut costs on printer supplies

Budget operational costs with a predictable cost per printed label



Compare non-MPS & MPS users

Non-MPS users	MPS users
Multiple vendors and support agreements for software, hardware, service and supplies	One partner, one solution and service partner reduce vendor management costs
Unknown labels usage (prints, failed prints / reprints etc)	Visible and predictable label usage and reports
Unknown or uncontrolled print costs	Known/Predictable cost per printed label
Losses from over stocking, uncontrolled use, expiry date waste etc	Replenish stock when required
Increased time and IT costs to manage printer downtime	Automated alerts when printer requires attention reduces downtime
Requires separate and higher IT and Operations budgets	Optimises IT & Operational budgets, free up resources for additional requirements

Managed Print Services (MPS) for labelling

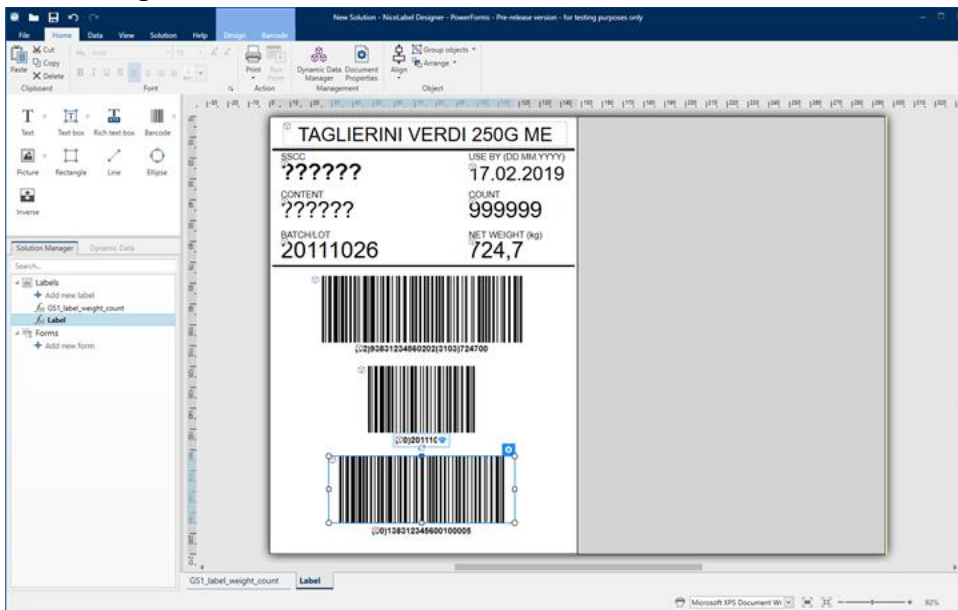
The true cost per printed label

Helping you migrate to a total MPS for labelling solution

To gain visibility of your label printing history, by label type, by printer, by user or other factors, there needs to be a centralised data repository collecting print history, including errors. This may mean that you need to switch the labelling solution you currently use.

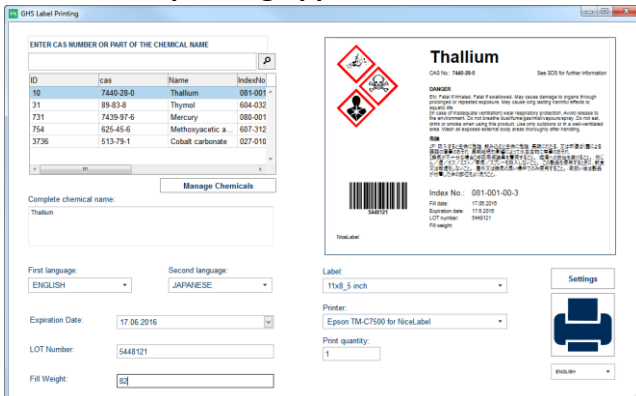
We will work with you to review the current labelling software used and review how modern labelling software is future proofed to comply with simple, complex or compliant requirements, also how to improve the printing process for on-demand or integrated printing from master data.

Label designer – modern user interface similar to MS Word

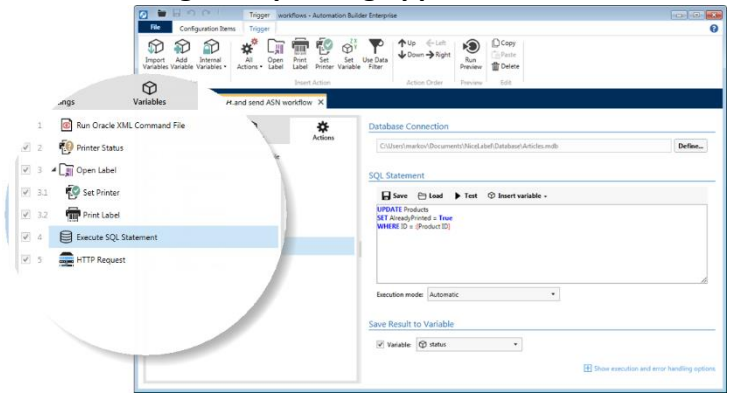


Try it, build your first label and printing solution - Download free 30 day trial

On-demand printing application builder



Integrated printing application builder



The result is that you will deploy a modern labelling system that is best practice for IT, Production, Quality Control, Marketing and Procurement departments.



Managed Print Services (MPS) for labelling

The true cost per printed label

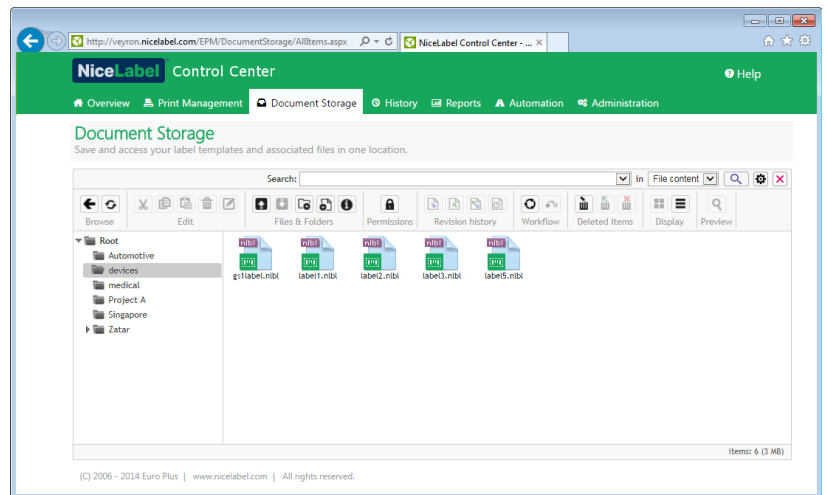
Recommended products for MPS



The NiceLabel LMS is a next-generation all-inclusive label management system for businesses that operate a quality management system and for regulated enterprises. The NiceLabel LMS includes everything you need to standardize, centralize and control your labelling.

Document Management System

NiceLabel's Document Management System (DMS), built for the needs of labelling, is a HTML5 web application that stores, manages and records all system and print history in a centralized indexed database repository. The web application provides a browser-based user interface that enables business-wide access.



Business users have for many years purchased desktop thermal label printers and print engines to print labels with barcodes, yet almost every printer supplied is effectively designed to fail barcode applications.

There are multiple reasons why your existing printer will not print readable barcodes 100% of the time, such as print head failure, ribbon wrinkle, incorrect settings, media mismatch, printer wear and tear and others.



Print Quality – Must be ODV™

100% quality barcodes is our mantra. Pairing the T6000 and T8000 with the exclusivity of Printronix's Online Data Validator (ODV™) yields 100% scannable barcodes 100% of the time.

