

Design Print Scan Continuous Improvement Solutions



Jamie Tilley
Cloud Printing Solutions Ltd
T: 0161 818 6446
W: cloudprintingsolutionsltd.com

The logo for Cloud Printing Solutions is located in the bottom right corner. It features a large blue cloud shape with the text "Cloud" in white and "Printing Solutions" in dark blue below it. The logo is set against a white circular background that also contains three smaller blue cloud shapes above it.

Cloud
Printing Solutions

Continuous Improvement

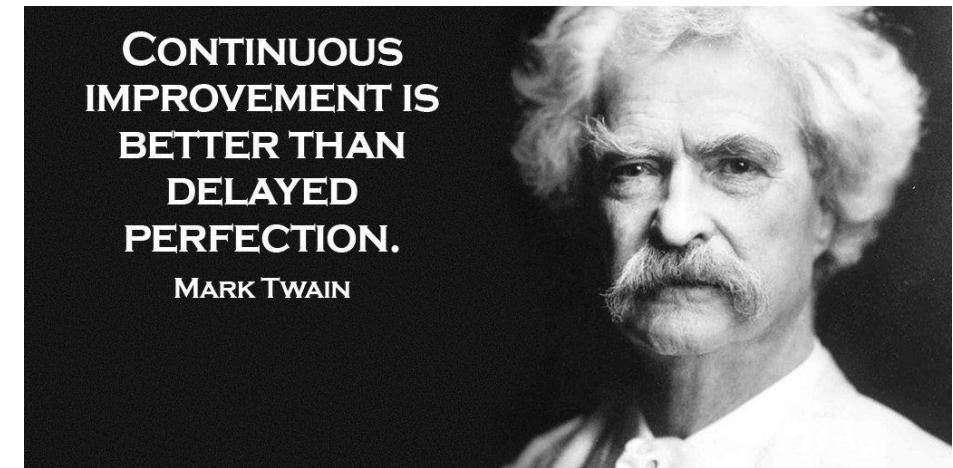
What does continuous improvement mean?

It means no process can ever be declared perfect but it can always be improved.

Continuous improvement drives both the improvement of processes and products. Companies that actively look for ways to enhance their business will invariably increase the value of their products and services. This will lead to more sophisticated and overall more economically competitive offerings.

Typical reasons for continuous improvement reviews

- Improve Application / Solution Workflow Processes
- Improve Employee Efficiency / Performance / KPI's
- Improve Equipment Performance / Quality
- Improve Employee / Customer Satisfaction
- Reduce Costs / Returns / Fines
- Reduce Waste / Carbon Footprint



When is your next continuous improvement review?

About Cloud Printing Solutions



Cloud Printing Solutions Ltd

T: 0161 818 6446

W: cloudprintingsolutionsltd.com

Industry Experience

- Long term experience and expertise in barcode and RFID, manufacturing and supply chain printing & scanning solutions
- Leading specialist in label management systems and printing solutions
- The Industries Leading Partner for Loftware NiceLabel Cloud



High ROI

- We help businesses modernise legacy automatic identification and labelling systems with next generation label management and barcode quality control solutions that deliver high ROI's.

Best Practice & Process Improvements

- Systems that provide best practice, process improvement and quality standards to ensure your business is ready for the future of quality controlled or regulatory labelling, such as GS1, FDA-UDI, EU-MDR, EU Food Regulations, GHS/CLP and more...





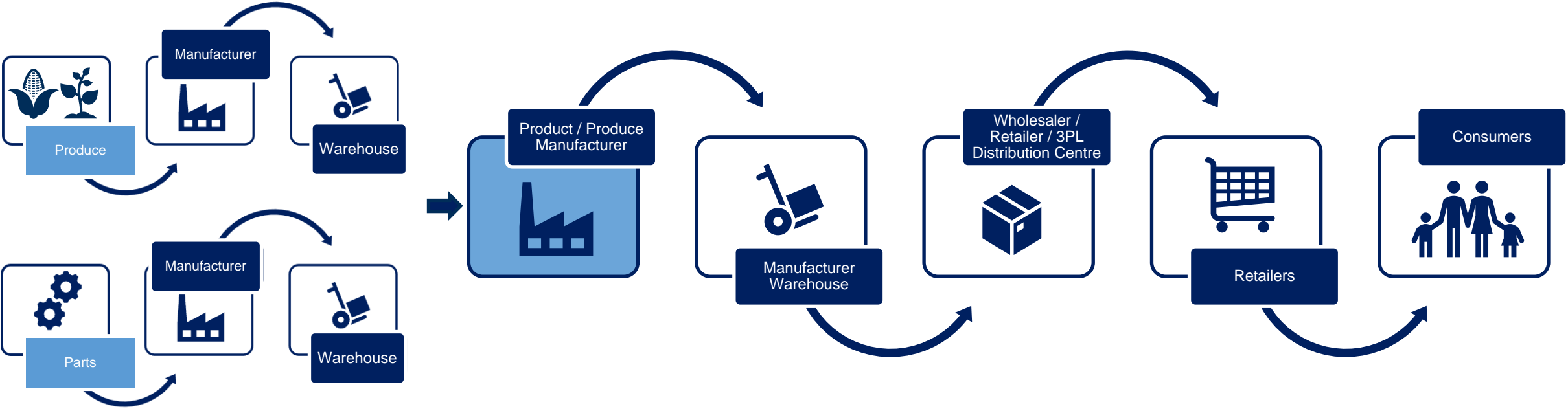
Manufacturing & Supply Chain printing & scanning solutions

This ebook will guide you through the 3 principle stages of designing & managing manufacturing and supply chain printing and scanning applications to support continuous improvement reviews.

Design	Print		Scan	
Software	Software	Hardware	Barcode Scanners	Mobile Computers
<p>The 1st stage for any barcode printing and scanning solution starts with software to;</p> <ul style="list-style-type: none"> • Manage users • Design templates (labels/documents etc) • Manage approvals workflows • Centralise template storage 	<p>Once templates have been designed its time configure the software and;</p> <ul style="list-style-type: none"> • Design manual printing solutions • Design integrated printing solutions • Design data management solutions to support printing solutions. 	<p>During the template design stage you will identify the appropriate printing technology and version of printer required, such as;</p> <ul style="list-style-type: none"> • Direct Thermal • Thermal Transfer • Colour Inkjet • Continuous Inkjet (CIJ) • Thermal Transfer Overlay (TTO) • Laser 	<p>Now that we had printed the barcodes we need to consider which type of handheld, fixed position or wearable barcode scanner will optimise user performance.</p>	<p>Many applications now require the mobile computer to include an integrated barcode scanner to simplify data capture applications.</p> <p>But keep an eye on lower cost hand held computers without a scanner that pair with wearable scanners to give user a complete hands free experience increasing productivity.</p>



The importance of manufacturing and supply chain printing & scanning solutions

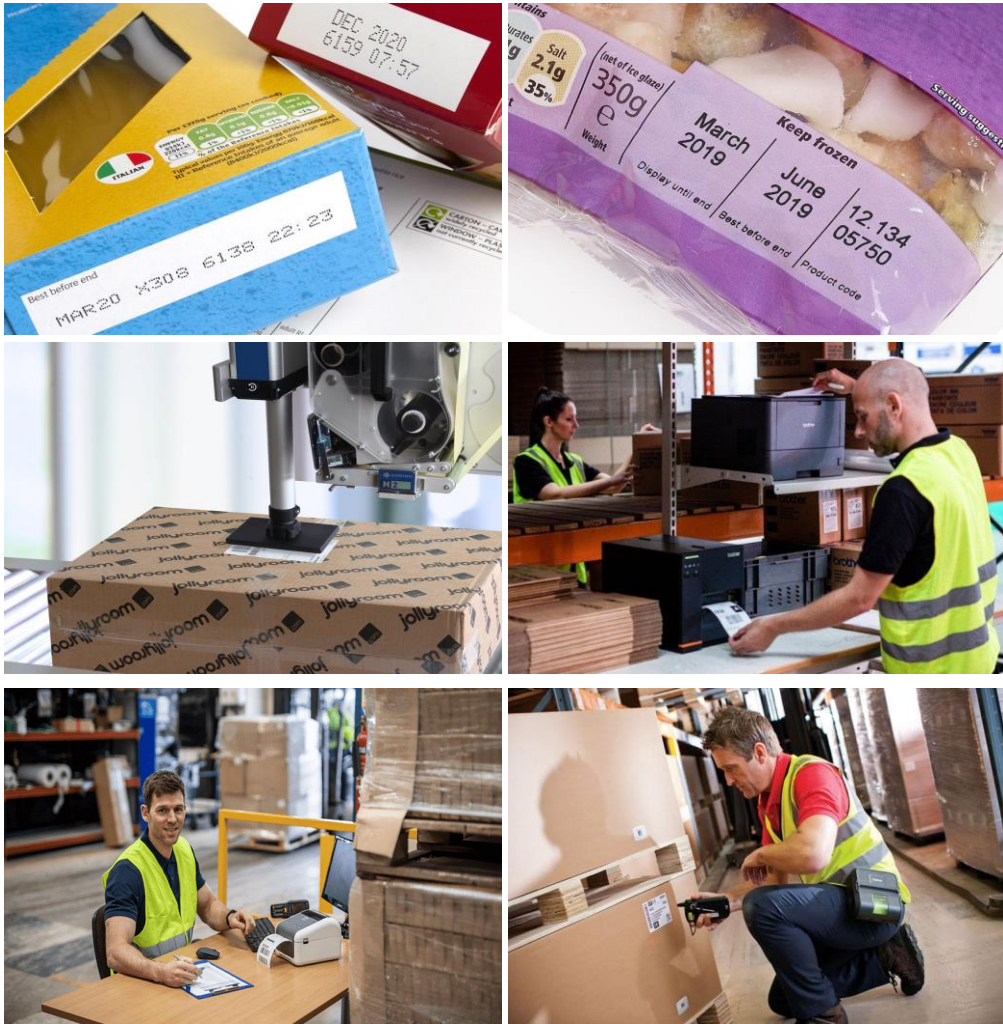


From raw material supplier to consumers. Primary, secondary and tertiary **barcode labelling, coding, marking and scanning** play a key part in every step of in-bound and out-bound manufacturing and supply chain solutions.

Without quality-controlled printing software and scanning solutions, products are at risk of not being supplied resulting in lost or reduced incomes.



Typical Manufacturing & Supply Chain printing & scanning applications



Application	Direct Marking / Printing	Label	Document
Goods in			
Product Identification		*	
Put away Labels		*	
Picking			
Works Orders			*
BOM / Pick Lists			*
Production			
Date Code	CIJ		
Product information	TTO	*	
Assembly / Staging / Packing			
Product Identification		*	
Repacking / Kitting Labels		*	
Work in Progress		*	*
Product/Promotion Sheets			*
Certificates			*
Packing Lists			*
Packaging / Carton Labels		*	
Goods out / Dispatch			
Delivery Notes			*
Invoices			*
Shipping/Address Labels		*	
Pallet Labels		*	

Design

NiceLabel Cloud

Cloud based Label Management System (LMS)

Cloud Printing Solutions Ltd

T: 0161 818 6446

W: cloudprintingsolutionsltd.com

A blue cloud icon containing the text "NiceLabel Cloud" in white, set within a white circular background.

NiceLabel Cloud

A large blue cloud icon containing the text "Cloud Printing Solutions" in white, set within a white circular background. Three smaller blue cloud icons are positioned above the main cloud.

Cloud
Printing Solutions



Cloud Technology Strategy

Key benefits recognised by Business and IT Leaders



Eliminates HW, SW and database infrastructure costs



Removes the need to install, monitor and manage



Speeds implementation, rollout and scale



Simplifies upgrades to new versions



Leverages advanced cloud technology



Reduces total cost of ownership



Cloud Based Labelling **Application** Strategy

Key benefits recognised by IT & Business Critical Application Leaders



Be up and running in minutes with minimal IT resources



Simply design labels in an intuitive environment



Configure labeling applications that guide your users



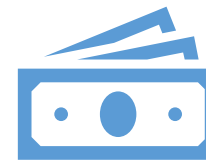
Integrate labeling with your business systems



Securely store and manage labels and data in the cloud



Easily scale printing across your business



Pay on subscription and lower your TCO



Benefit from partner services & support

Best practice software that supports all Users in any Location

Administrators

- ✓ IT, System...
- Head Office
- Home Office
- Factory
- Warehouse

Designers

- ✓ IT, Marketing, Regulatory Affairs, Print Room...
- Head Office
- Home Office
- Factory
- Warehouse

Approvers

- ✓ IT, QA, Marketing, Regulatory Affairs, Customers...
- Head Office
- Home Office
- Customers

Print Operators

- Factory
- Warehouse
- Store
- Customers / Partners / Suppliers

Customers / Partners / Suppliers

- Design, Approve, Print in any location

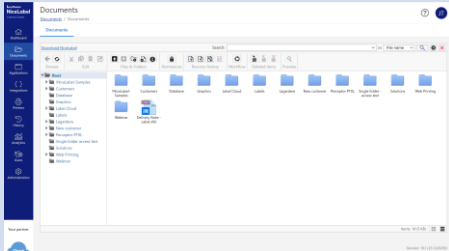
Support: Software/Hardware Service Provider

- Design, Print, Support in any location



Best Practice Label Management System (LMS) Modules

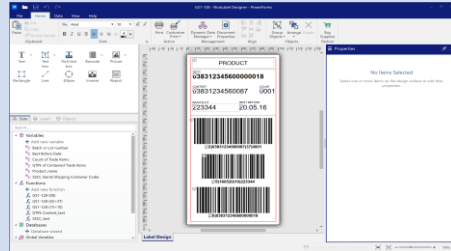
Document Management System (DMS)



Manage and control users, templates, approvals, versions, printers, system history & analytics from any browser, anywhere

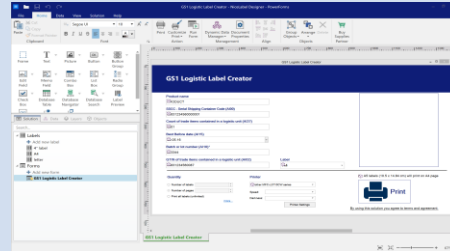
Comply with ISO9001, FDA CFR 21 Part 11 and other quality management systems

Template Designer



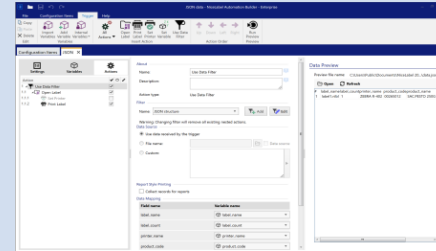
Design simple, complex or industry compliance templates for any type of manufacturing and supply chain printer or printing application.

Manual-On Demand Printing Application Builder



Create custom printing and data management solutions to improve operator accuracy and efficiency

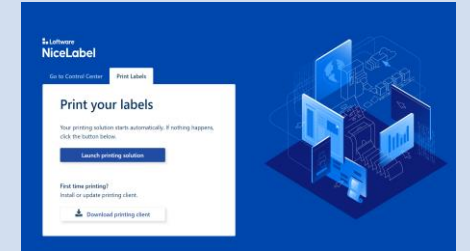
Integration System Application Builder



Create automated printing and data management solutions.

Integrate printing directly from ERP/MES/WMS and many other business critical systems.

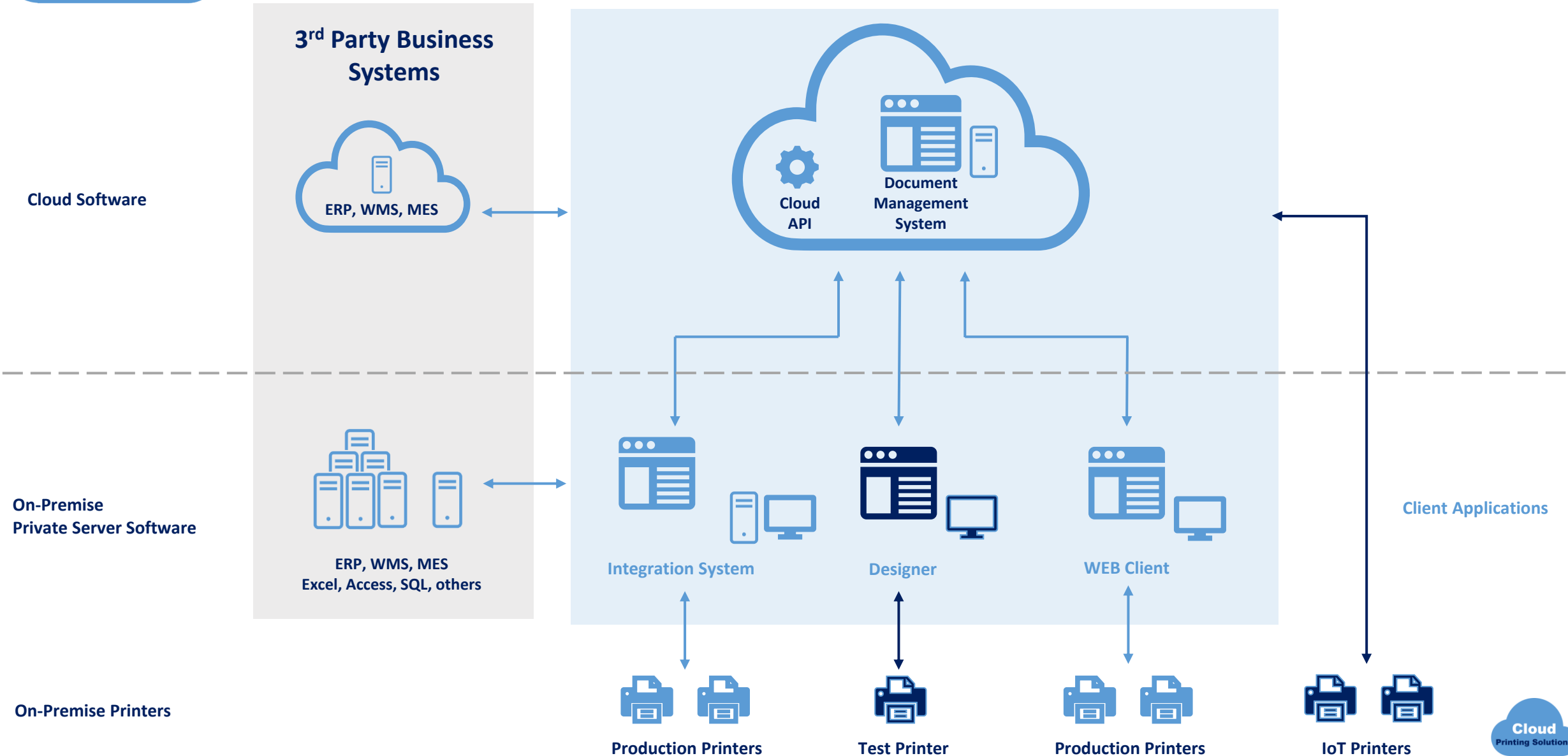
Web Printing System



Deploy standard or custom printing and data management solutions via the web printing client in just a few clicks.

Extend printing solutions to customers, partners and suppliers.

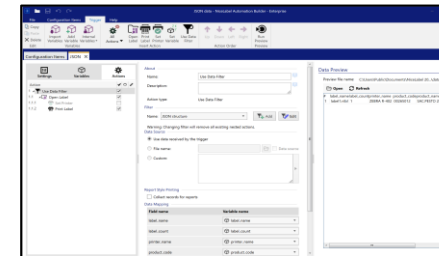
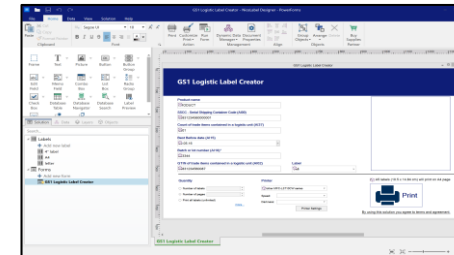
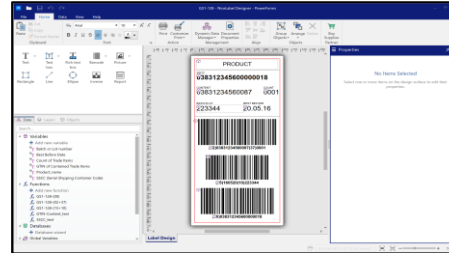
Best practice software architecture that's supports any size business or system





Label Management System (LMS) workflow

1. Design – any type of Templates



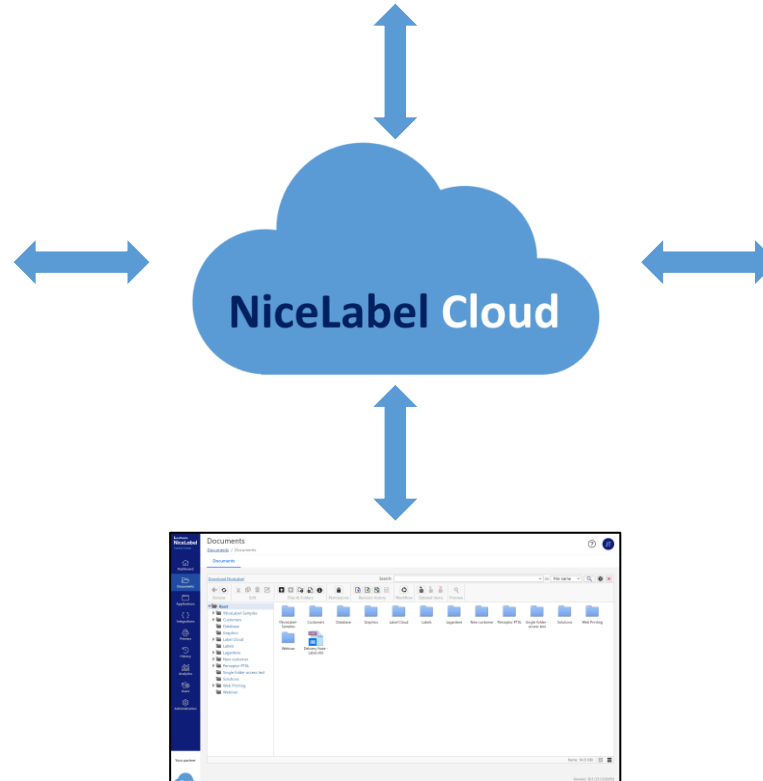
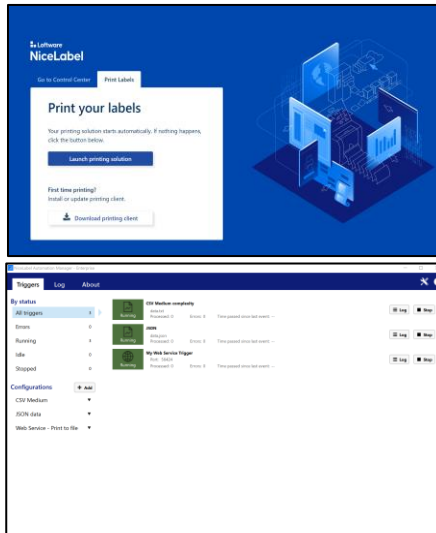
2. Integrate

Integrate templates with business data & manual or integrated printing solutions

4. Print

Manual Print via cloud based form solutions

Automatically Print Via on-premise or cloud based systems.



3. Manage – Users, Printers, Approve and deploy Templates & Printing Solutions

Print

NiceLabel Cloud

Typical Use case Scenarios

Cloud Printing Solutions Ltd

T: 0161 818 6446

W: cloudprintingsolutionsltd.com

A blue cloud icon containing the text "NiceLabel Cloud" in white, centered within a white circular background.

NiceLabel Cloud

A large blue cloud icon containing the text "Cloud Printing Solutions" in white, centered within a white circular background. Three smaller blue cloud icons are positioned above the main cloud.

**Cloud
Printing Solutions**

Printing Methods



Manual printing

A manual printing solution is where the operator opens and uses the labelling software (printing form) to select and print labels/tags/tickets/documents.....

The printing form is deployed via the internet or intranet and accessed by a Web Printing Client



Integrated printing

An integrated (or automated) printing solution is where the operator executes a printing request from within an existing business system. The business system creates a trigger (such as a csv/xml/json file, database change, HTTP/Web Service call, Cloud API) and the printing software solution responds to the trigger to merge data with the required template and automatically/instantly prints to the required printer.

Manual – On demand Printing

Automatically generated printing form

Improves operator accuracy and efficiency

- Simple printing form automatically generated
- No coding or development required

The screenshot displays the NiceLabel Cloud printing interface. On the left is a configuration form for an HP LaserJet MFP M28w printer. The form includes fields for Speed and Darkness (both 'not available'), a 'Print to file' checkbox, and a 'Printer Settings' button. Under the 'Quantity' section, 'Number of labels' is set to 1. Below this is a 'Label' dropdown menu and a 'Variables' table.

Prompt	Value
Product_name	PRODUCT
SSCC (Serial Shipping Container Code)	0383123456000001
Count of Trade Items	0001
Best Before Date	20.05.16
Batch or Lot number	223344
GTIN AIG2	09831234560087

On the right, a generated label is shown. The label features the following text and barcodes:

PRODUCT

SSCC
03831234560000018

CONTENT 03831234560087 COUNT 0001

BATCH/LOT 223344 BEST BEFORE 20.05.16

Barcode 1: (02)03831234560087(37)0001

Barcode 2: (15)160520(10)223344

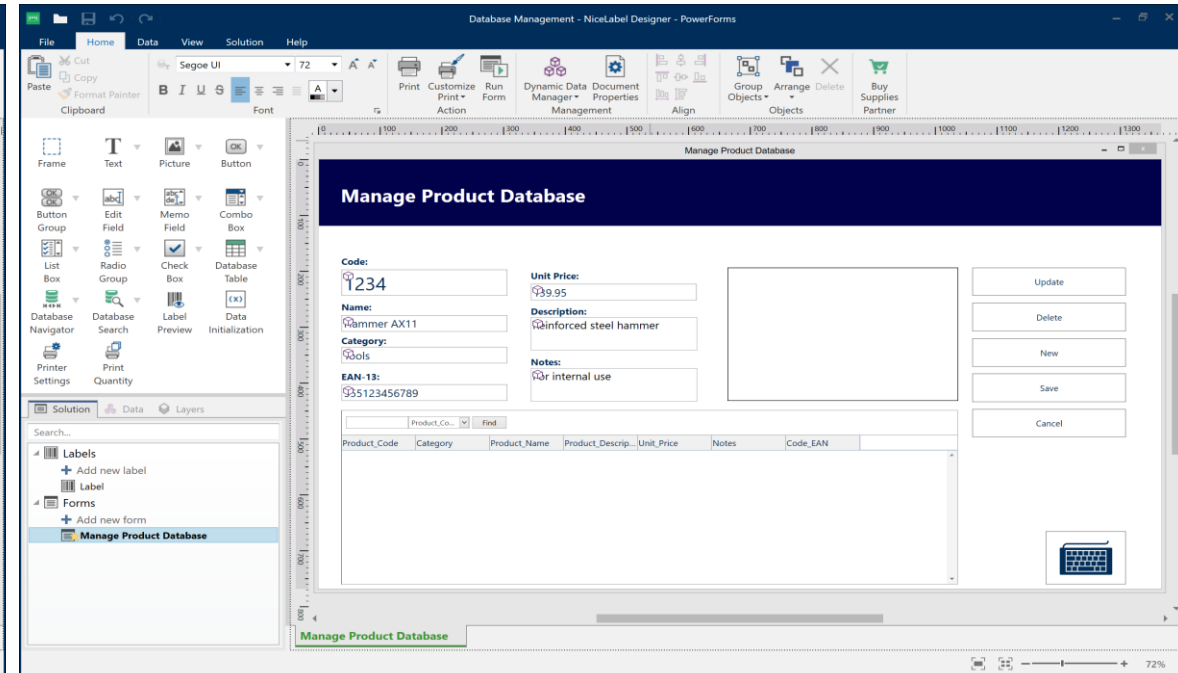
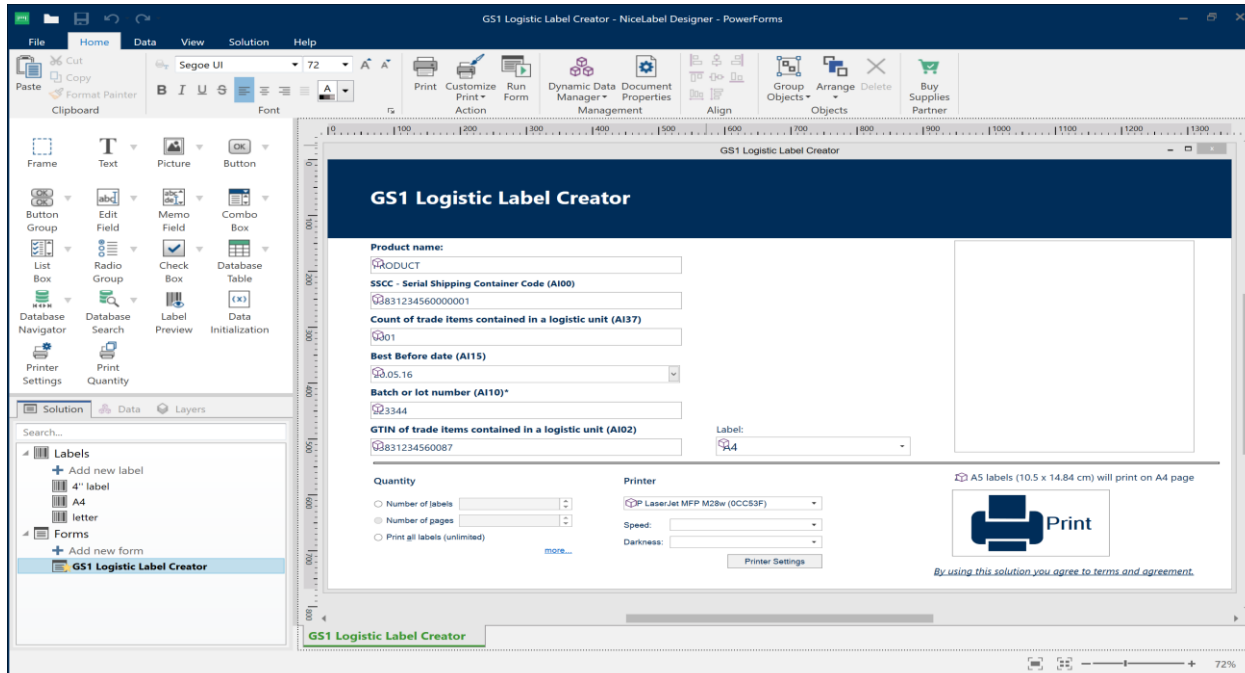
Barcode 3: (00)03831234560000018

Best Practice Manual – On demand Printing & Data Management

Application builder for Printing & Data Management solutions

Configure custom **Printing & Data Management** solutions to improve operator accuracy and efficiency

- Customisation without coding
- Simplify the processes for nonskilled workers
- Streamline complex processes



Typical single site, multi-user use case scenario for web printing

On-Demand Manual Printing

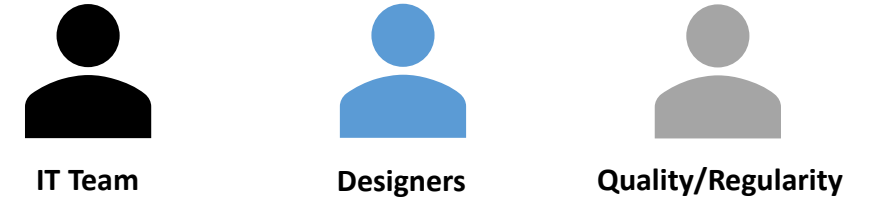
A single site business with multiple users

- Template designer
- IT Team
- Quality Manager
- Print Operators

uses NiceLabel Cloud at the Head Office or from any Remote location to centrally;

- Design, Manage and Deploy labels and printing solutions to multiple factory/warehouse print operators

Office / Factory / Home Based



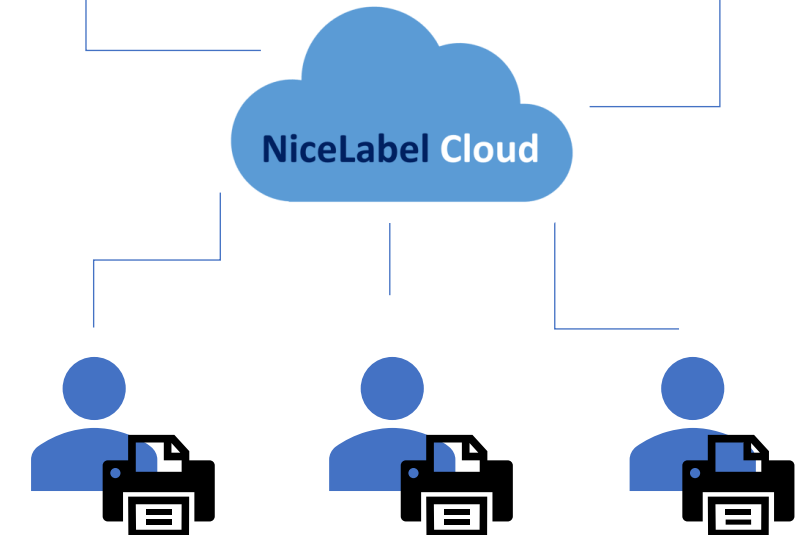
Desktop/Panel PC



WiFi Windows Tablets



Label, Tag, Ticket, Document,
Direct Marking, CIJ, TTO printers



Factory / Warehouse Based
Print Operators / Workstations

Typical multi-site use case scenario for web printing

On-Demand Manual Printing

A national business with remote operations such as;

- Production Sites
- Distribution Centers
- Depots/Stores
- Remote Workers (Service/Maintenance Engineers etc....)
- Global Business Partners / Suppliers

uses NiceLabel Cloud at the Head Office or from any Remote location to centrally;

- Design, Manage and Deploy labels and printing solutions to remote operators and business partners/suppliers

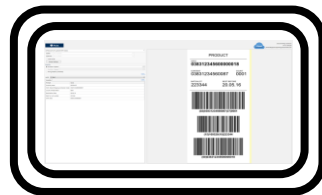
to support Local, National or Global printing

On Premise Desktop/Panel PC

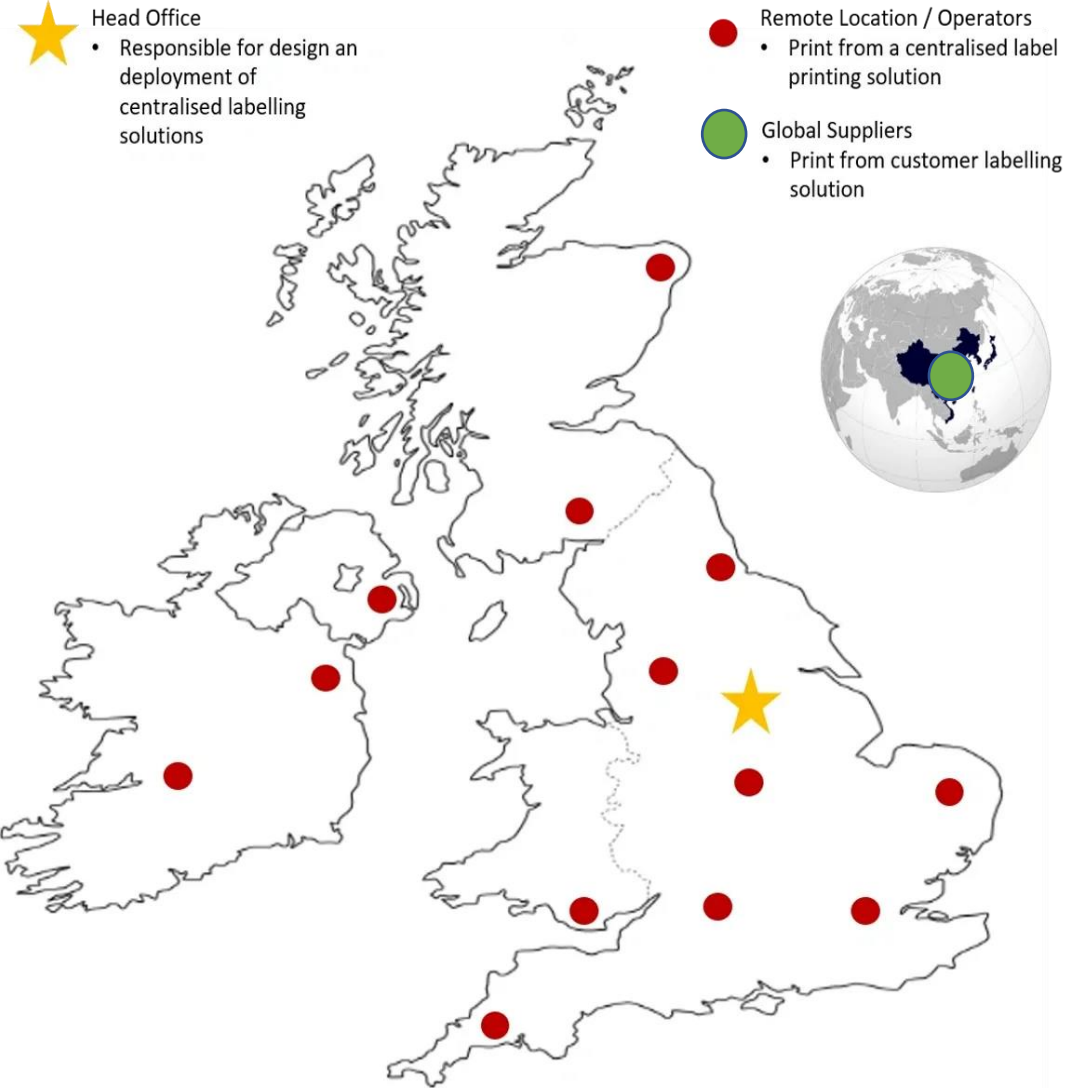


Label, Tag, Ticket, Document, Direct Marking, CIJ, TTO printers

Field Service 4/5G Windows Tablets



Mobile Label, Receipt, Document printers



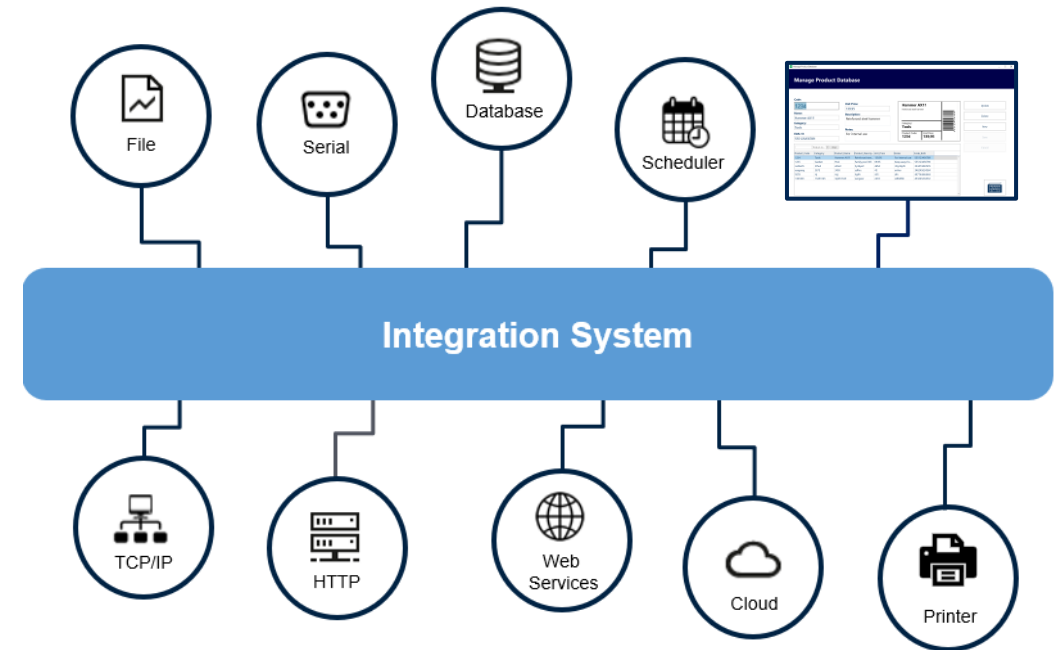
Integrated Printing & Data Management

Application builder for integrating printing and data management solutions with master data systems

Configure integrated solutions to improve end-to-end operational efficiency

Field name	Variable name
label_name	label_name
label_count	label_count
printer_name	printer_name
product_code	product_code
product_name	product_name
ean13	ean13
weight	weight

```
label_name|label_count|printer_name|product_code|product_name|ean13|weight
1|label1.nlbl|1|ZEBRA R-402|00265012|SAC.PESTO 250G 383860026501|1.1 kg
```



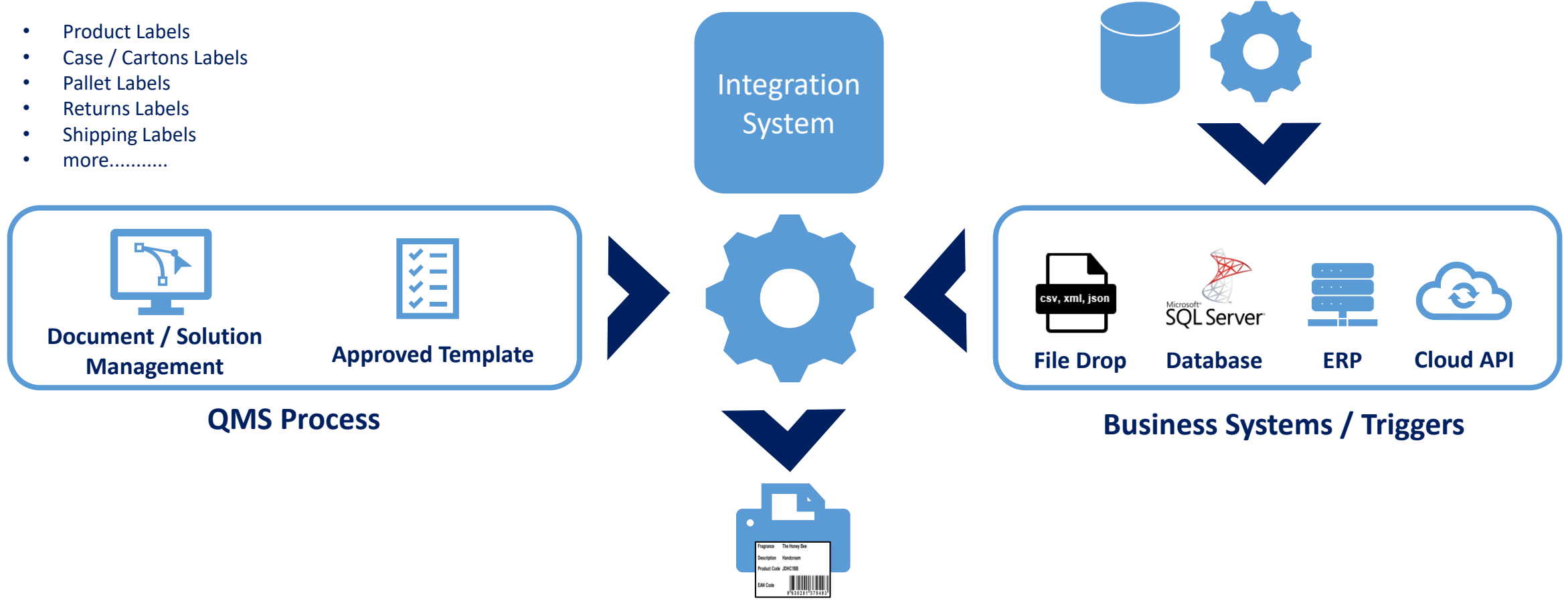


Typical Integrated Printing use case scenario

Integrate templates with business systems to support Local, National or Global printing of;

- Product Labels
- Case / Cartons Labels
- Pallet Labels
- Returns Labels
- Shipping Labels
- more.....

Process triggered by business system



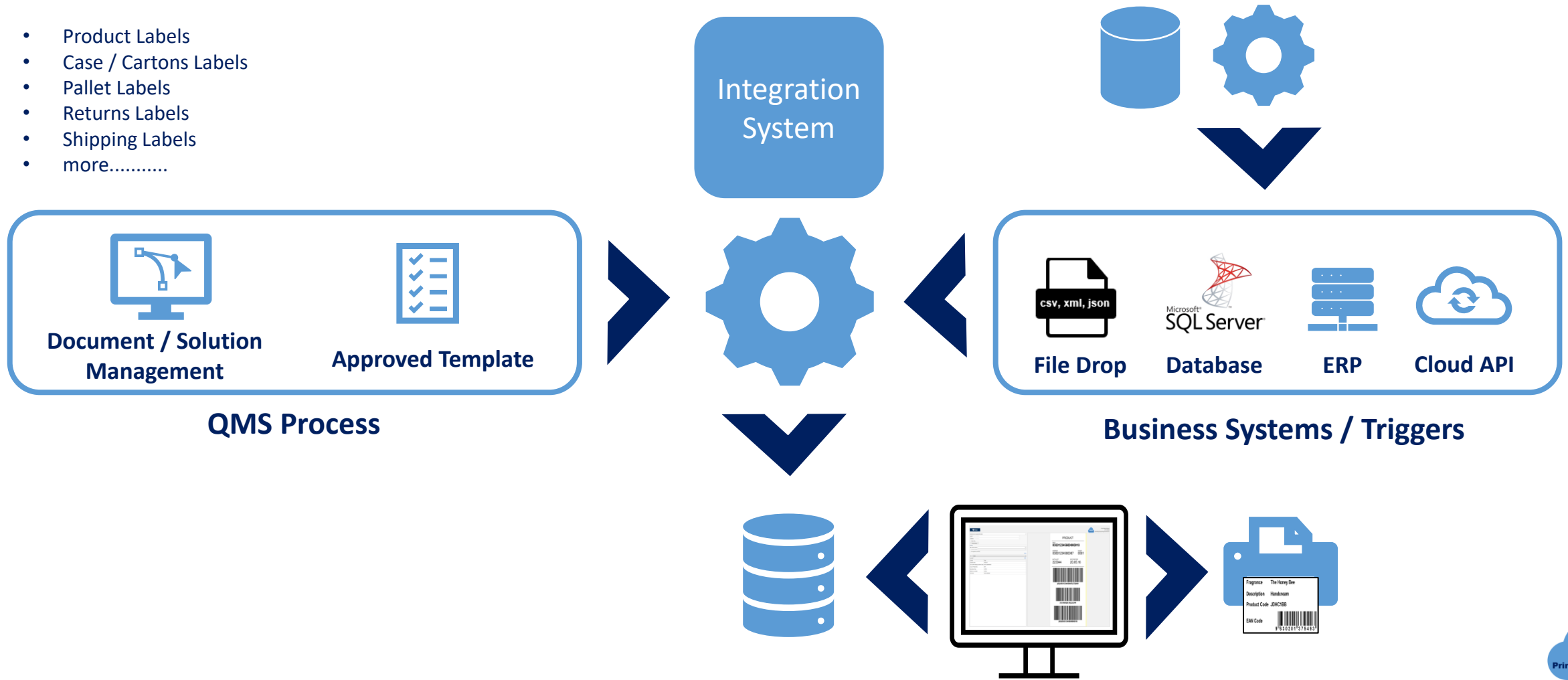


Typical Integrated Data Management and Manual Printing use case scenario

Integrate templates with business systems to support Local, National or Global printing of;

- Product Labels
- Case / Cartons Labels
- Pallet Labels
- Returns Labels
- Shipping Labels
- more.....

Process triggered by business system

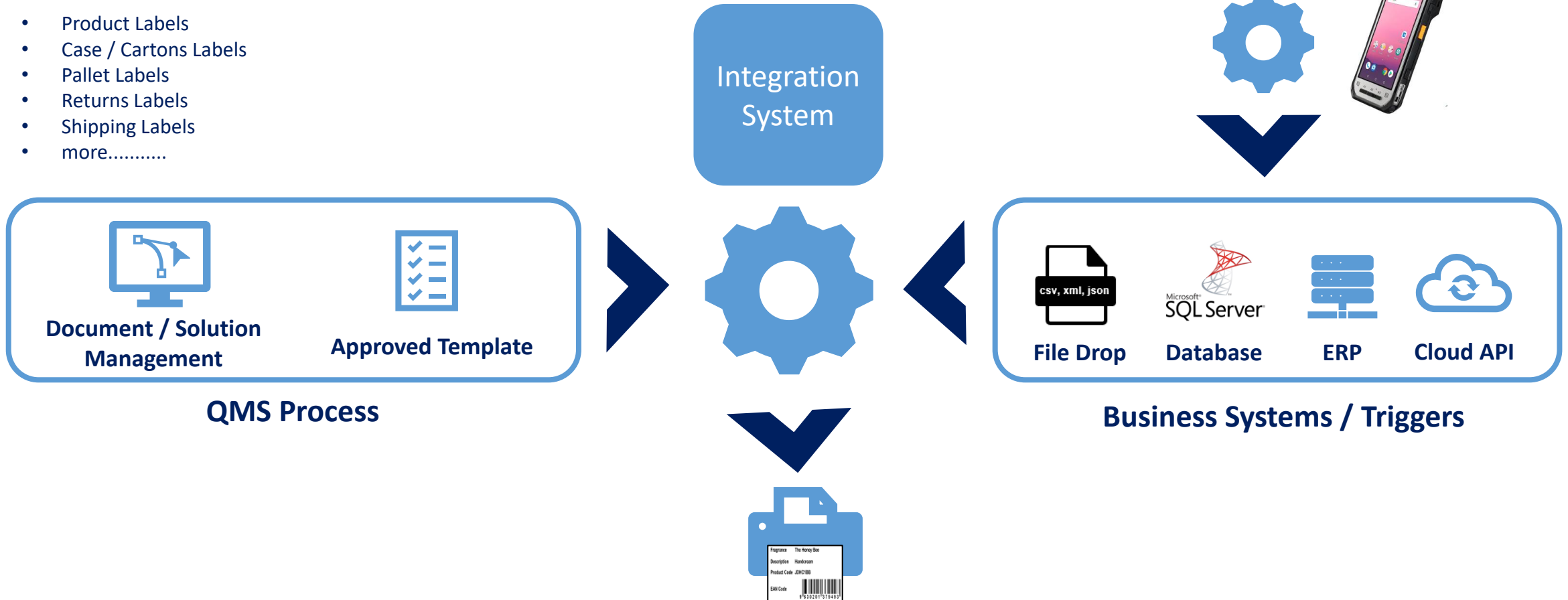


Typical Integrated Printing from custom Mobile Android APP

Integrate templates with business systems to support Local, National or Global printing of;

- Product Labels
- Case / Cartons Labels
- Pallet Labels
- Returns Labels
- Shipping Labels
- more.....

Process triggered by Android APP





Print

Label, Tag, Ticket & Document Printers






Cloud Printing Solutions Ltd
T: 0161 818 6446
W: cloudprintingsolutionsltd.com

The logo features a large blue cloud shape containing the text 'Cloud Printing Solutions' in white. Above this main cloud are three smaller blue cloud shapes. The entire logo is set against a white circular background with a light blue border.


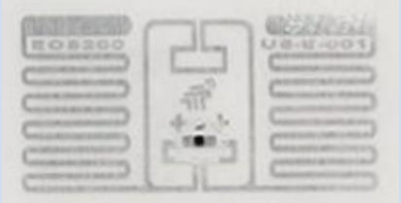



**Cloud
Printing Solutions**

Desktop Printers	Midrange Desktop Printers	Performance Desktop Printers	Mobile Printers	Print & Apply Printers	Colour Printers	Document Printers
 <p>Brother, TSC Printronix, Zebra</p>	 <p>Brother, TSC Printronix, Zebra</p>	 <p>Brother, TSC Printronix, Zebra</p>	 <p>Brother, TSC Printronix, Zebra</p>	 <p>Domino, Zebra</p>	 <p>Epson</p>	 <p>Brother</p>
<p>Typical Spec 2 & 4" wide 203/300dpi USB/Ethernet DT/TT 5" OD Media roll 100m ribbons</p> <p>Application Options: Linerless</p>	<p>Typical Spec 4 & 6" wide 203/300/600 dpi USB/Ethernet/BT/WiFi DT/TT 8" OD Media roll 300/450m ribbons</p> <p>Application Options: Linerless RFID</p>	<p>Typical Spec 4, 6 & 8" wide 203/300/600 dpi USB/Ethernet/BT/WiFi DT/TT 8" OD Media roll 300/450/600m ribbons</p> <p>Application Options: Linerless RFID Print & Apply</p>	<p>Typical Spec 2, 3 & 4" wide 203 dpi Bluetooth/WiFi DT Label/Receipt 2" media roll</p> <p>Application Options: Linerless</p>	<p>Typical Spec 4 & 6" wide 300dpi Ethernet/WiFi DT/TT 8" media roll 450/600m ribbons</p> <p>Application Options: Linerless RFID</p>	<p>Typical Spec 4, 6 & 8" wide 1200/2400dpi USB/Ethernet/WiFi 8" media roll 4 colour ink cartridges</p> <p>Application Options: Print & Apply</p>	<p>Typical Spec A4 / A3 30+ Page Per Minute</p> <p>Application Options: Additional cassettes</p>

Printers by solution

Post/Parcel	Pick/Pack Workstations	High Performance	Barcode Compliance	Driverless / IoT
				
<p>Entry level/lower cost direct thermal label printers used by companies to label items that need to be shipped by post/parcel carriers.</p> <p>Current trend: Linerless is fast becoming a key requirement to improve performance, reduce costs and environmental impact. Label backing media is costly to produce and can not be recycled resulting in waste management costs to incinerate or dump in land fills.</p>	<p>Entry to Mid Level performance and costs for companies requiring a higher performance printer and options to support a wide variety of applications.</p> <p>Current trend: Using multiple printers to support companies having to change label media frequently for different applications. Printers with clam shell design for media access allows for multiple printers to be placed side by side.</p>	<p>Mid to high performance and costs for companies who need a printer capable of high volume, fast through puts or wider formats.</p> <p>Current trend: Distribute print volumes to lower cost mid range printers where multiple media changes per workstation frequently occur resulting in increased performance.</p>	<p>High performance printer with built in barcode scanning to validate barcode print quality to meet customer or industry compliance standards.</p> <p>Current trend: Still a pre-requisite for most compliance industries such as Medical Device Manufacturers, Pharmaceutical, or for customer compliance demands or companies with high value goods.</p>	<p>Desktop/Mid-range/High Performance & Mobile printers for all applications requiring driverless printer support for cloud based applications.</p> <p>Current trend: IoT printers are fast becoming the preferred means of printing to devices on the internet removing the need to install printer drivers on local servers or computers.</p>

Printers by solution

Mobile Printing	RFID	Print & Apply	Colour Printing	Document Printing
				
<p>Entry level receipt or wide format labelling solutions with typical Bluetooth or WiFi connectivity</p> <p>Current trend: Linerless is fast becoming a key requirement to improve performance, reduce costs and environmental impact. Label backing media is costly to produce and can not be recycled resulting in waste management costs to incinerate or dump in land fills.</p>	<p>Entry to Mid Level performance and costs for companies requiring integrated item, case or pallet level tracking</p> <p>Current trend: Close loop use of RFID still remains the most used and successful method of RFID deployments.</p>	<p>High performance print & apply labels for item, case, carton or pallet applications.</p> <p>Current trend: Due to continued labour shortages, automation is being considered to replace labour intensive packing and labelling applications where consistent volumes of labelling occur.</p>	<p>Mid to high performance and print quality printing of Matt or Gloss finished labels.</p> <p>Current trend: Being used to replace high cost and often wasteful pre-printed colour labels with on-demand colour labels when required, or to improve company branding on retail products previously printed with black and white labels.</p>	<p>Desktop or mobile document printers.</p> <p>Current trend: Combine Document & Label printing applications such as post/parcel, pick/pack or mobile asset management applications where dual printing co-exists.</p>


Scan

Fixed Position Cordless Wearable

Cloud Printing Solutions Ltd
T: 0161 818 6446
W: cloudprintingsolutionsltd.com

The logo features a large blue cloud shape containing the text 'Cloud Printing Solutions' in white. Above this main cloud are three smaller blue cloud shapes. The entire logo is set within a white circular area that has a blue border, which is itself part of a larger blue circular graphic on the right side of the slide.

**Cloud
Printing Solutions**

Hand Held	Cordless	Fixed Position	Wearable	Mobile Computer
 <p>Datalogic, Zebra</p>	 <p>Datalogic, Zebra</p>	 <p>Datalogic, Zebra</p>	 <p>ProGlove, Zebra</p>	 <p>Panasonic, Zebra</p>
<p>Traditional handled scanner connected by USB or Serial cable to a host computer.</p> <p>Current trend: Migration from 1D laser scanners to 2D image scanners. Migration to cordless or wearable scanners.</p>	<p>Cordless scanner connected by Bluetooth to a base station that is connected by USB to a computer.</p> <p>Current trend: Migration to wearable scanners to avoid pick up/set down of cordless scanners that may also result in damage or lost items.</p>	<p>Fixed Position scanners are typically connected to a control box that is integrated with an automated print and apply printer or conveyor solution.</p> <p>Current trend: Integration of usually stand alone line side fixed scanners into print and apply verification solutions.</p>	<p>Modern way to deploy barcode scanning solutions to users who need to retain full use of both hands without having pick up/set down the scanner.</p> <p>Current trend: Significant productivity improvements for users who need instant use of scanning equipment without the need and wasted time to locate, pick up, scan, set down the scanner.</p>	<p>Mobile computers with an integrated barcode scanner used as part of a mobile data capture application</p> <p>Current trend: Combine wearable scanner and arm band for the mobile computer to provide a full wearable solution to improve operator accuracy and efficiency and reduce service cost or losses for legacy hand held computers</p>

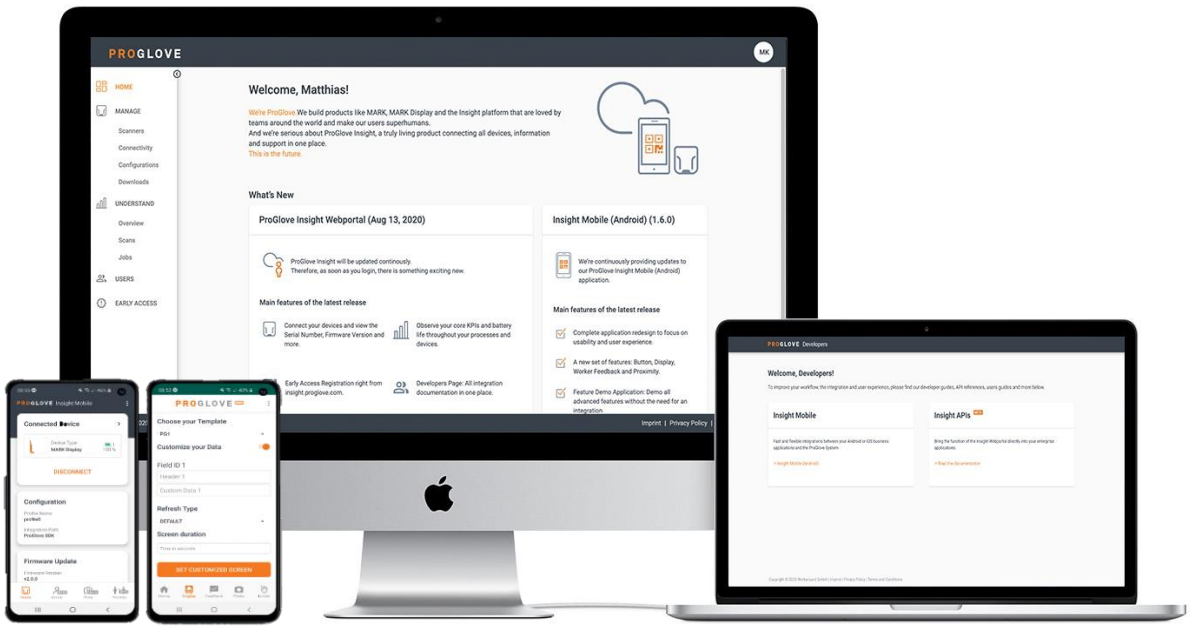
ProGlove Wearable Scanner Solutions



Leo	Mark Basic	Mark 2	Mark Display	Insight
				
<ul style="list-style-type: none"> • 1D and 2D barcode scanner (range: 10-70 cm) • Battery life for up to 4,000 scans* • 35 grams 	<p>Mark Basic Standard</p> <ul style="list-style-type: none"> • Standard range 1D and 2D barcode scanner (10-90 cm) • Battery life for up to 7,000 scans* • 40 grams <p>Mark Basic Mid Range</p> <ul style="list-style-type: none"> • Mid range 1D and 2D barcode scanner (30-150 cm) • Battery life for up to 7,000 scans* • 40 grams 	<p>Mark 2 Basic</p> <ul style="list-style-type: none"> • Standard range 1D and 2D barcode scanner (10-90 cm) • Battery life for up to 12,000 scans* • 40 grams <p>Mark Basic Mid Range</p> <ul style="list-style-type: none"> • Mid range 1D and 2D barcode scanner (30-150 cm) • Battery life for up to 12,000 scans* • 40 grams 	<p>Mark Display Standard</p> <ul style="list-style-type: none"> • Standard range 1D and 2D barcode scanner (10-90 cm) • 1,54" e-paper display (high contrast, non-reflective) • Battery life for up to 7,500 scans* • 48 grams <p>Mark Display Mid Range</p> <ul style="list-style-type: none"> • Standard range 1D and 2D barcode scanner (10-90 cm) • 1,54" e-paper display (high contrast, non-reflective) • Battery life for up to 7,500 scans* • 48 grams 	<p>Device Management & Visibility</p> <p>Insight Device Visibility provides a unified interface to implement and maintain all the system critical elements for the best performing wearable barcode system.</p> <p>API-First</p> <p>Benefit from our API-first approach and push all ProGlove device data directly into your running mobile device management system or other business applications.</p>



ProGlove Insight – Cloud Based Management



CONNECTIVITY FIT
With our Hardware and Software options



SHOP FLOOR ACCESS
With Insight Mobile and Gateway solutions



PLUG & PLAY VISUALISATION
by using the Insight Webportal



ENTERPRISE INTEGRATION
Stream Data or use REST APIs





Optimised Device Setup

Full control over your Device Lifecycle Management.

- Enhance processes by improving scanning performance with enhanced device settings
- Download center for Firmware, App and SDK
- Zero-touch roll out of configuration and firmware



Device Visibility

Essential window into Device Lifecycle Management

- Find all metadata in one place – serial no. battery information, configurations, etc.
- Identify active, idle or out of service devices
- Track current and historic connections to locate lost devices
- Observe site-wide activity from a single desktop



Process Analytics

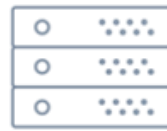
Contextualized insights you can act on.

- Compare station performance and efforts across site and even across company
- Visualize sequential job activities easily
- Develop new metrics to analyze performance
- Run barcode-quality analyses to understand supplier printing issues



API-First

Consume all available data via APIs and combine them with your internal data sources - streamed or as REST API.



ERP



MDM



BI / Analytics



ProGlove Insight – Device Visibility

Dashboard

- Overview on critical device fleet parameter
- Observe inactive devices, firmware versions and others

Lists

- Scanner and Connectivity Device Lists
- Advanced filtering based on parameters of Layout structure.
- Identify outlier, configurations and battery performance early on.

Configuration Tool

- Configuration for all products
- Scanners, Connectivity Options, etc.
- Support for manual and zero-touch roll-out processes.

The screenshot shows the ProGlove Insight dashboard. The top navigation bar includes 'PROGLOVE Insight', 'DEVICE VISIBILITY', 'PROCESS ANALYTICS', 'RESOURCES', 'Early Access', and 'MS'. A left sidebar shows a tree view of 'My Organization' with categories like 'LOCATION 1', 'Process Group 1', 'Process Group 2', and 'Process 1 Selected'.

The main content area is divided into two sections:

Scanners

Search: Model, Serial Number, Device Name, ...

Model: MARK 2 mid range | Firmware: Multiple Options Selected | Device Status: Active Inactive Inactive 7+ days

Filters: MARK 2 mid range, v1.7.0, v2.2.0-prerelease-2, Active

MODEL	STATUS	SERIAL NUMBER	LATEST PROCESS	LATEST CONNECTIVITY	DEVICE NAME	BATTERY
MARK 2 standard range	●	M2SR000000108	Picking / BX8 / FM	Gateway1		75% ■

Rows Per Page: 15 | 1-4 of 4

Connectivity Devices

Search: Serial Number, Model, Name, ...

App Version: All | Device Status: Active Inactive Not registered Unknown

DEVICE NAME	STATUS	LATEST PROCESS	DEVICE TYPE	APP VERSION	DEVICE ID
Gateway1	●	Picking / BX8 / RM	Gateway	1.1.0	123e4567-e89b-12d3-a456-426655440001
Gateway2	●	Picking / BX8 / RM	Gateway	1.1.0	123e4567-e89b-12d3-a456-426655440002
Gateway3	●	Picking / BX8 / RM	Gateway	1.1.0	123e4567-e89b-12d3-a456-426655440003
Gateway4	Unknown	Picking / BX8 / FM	Gateway	1.1.0	123e4567-e89b-12d3-a456-426655440004

Rows Per Page: 15 | 1-4 of 4



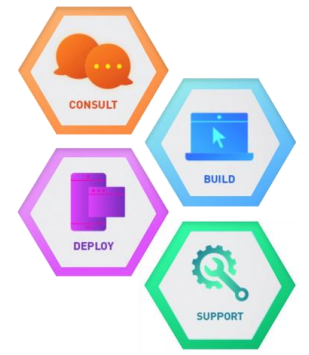
Panasonic TOUGHBOOK computers

N1 Flat Android 4.7" Hand Held	N1 Android 4.7" Hand Held	S1 Android 7" Tablet	A3 Android 10" Tablet	G2 Windows 10" Tablet
				
<ul style="list-style-type: none"> • Qualcomm® SDM660 Octa-Core Processor • Android™ 11 • 4.7" HD (1280 x 720) daylight-readable display with glove and rain mode • Optional passive and active pen for precise signatures • Up to 14 hours battery life with standard battery • Bluetooth™ Version 5.0 Class 1 • ARM® TrustZone® (Built-in) Security • MIL-STD 810H tested • 210cm Drop Resistance • IP68 rated • -20 °C to 50 °C operating temperature (tested by Panasonic) 	<ul style="list-style-type: none"> • Qualcomm® SDM660-2 Processor • Android 11 • 4.7" Active Matrix (TFT) colour LCD 1280 x 720 (HD) LCD with sunlight-viewable glove-enabled capacitive touchscreen (minimum 500cd/m²) • Angled ergonomic barcode reader • Tested to MIL-STD 810G**, IP68* 	<ul style="list-style-type: none"> • Qualcomm® SDM660 Octa-Core Processor • Android 10 / Supporting OS: Android 11, 12 • 7.0" WXGA(1280x800) with AR, IPS colour LCD (up to 500cd/m² brightness) • Gadget Port for flexibility • Up to 14 hours battery life with extended battery 	<ul style="list-style-type: none"> • Qualcomm® SDM660 Octa-Core Processor • Android 9 / Supporting OS: Android 11, 12 • 10.1" WUXGA Outdoor Readable Display • Gadget Port for flexibility • Up to 9 hours battery life with standard battery 	<ul style="list-style-type: none"> • Intel® Core™ i5-10310U vPro™ Processor • Windows 11 Pro / Windows 10 Downgrade Model available • 10.1" Active Matrix (TFT) colour LCD 1920 x 1200 (WUXGA) LCD with sunlight-viewable glove-enabled capacitive touchscreen (up to 1.000cd/m²), IP55 Digitiser • IP65 Water and dust resistant, tested by an independent third party lab following MIL-STD-810H and IEC 60529 • Long battery life of up to 12 hours



Panasonic TOUGHBOOK Omnia - Custom APP Development

The agile software development approach for cost-effective, customised mobility.



Agile Mobility. Simplified.

Managing software across multiple platforms and operating systems can be complex. Traditionally organisations manage a diverse range of mobile IT devices, form factors and operating systems, operating a very siloed approach. Ensuring everything is integrated and kept up to date across all hardware and software platforms can be costly and time-consuming.

TOUGHBOOK Omnia, is a cost-effective, end-to-end software solution approach from Panasonic, that can future-proof and greatly speed up custom application development and maintenance cycles for your mobile business operations. Through the use of the MCL Platform, development, testing and deployment of customised, line-of-business software applications is reduced to days or weeks rather than months – much faster than using a traditional software house or internal native development.

Through industry standard interfacing options, Omnia apps can synchronise with virtually any back-end systems including SAP, Oracle, BlueYonder (JDA) and many others. And as it's a bespoke solution, there are virtually no limitations on how TOUGHBOOK Omnia can work for your business.

Software Complexity, Simplified.

TOUGHBOOK Omnia, can open the door to immediate, visible productivity improvements across your mobile IT estate:

Custom apps built once; deployed to many form factors

Run on Android or Windows operating systems and multiple device types

Experience process efficiencies much sooner

Apps brought to market in weeks rather than months

Manage everything centrally and effortlessly

Let your operational teams manage users and systems from any location

Achieve visibility of costs

Thanks to a cloud-based, annual service subscription

Get more from your technology investment

Stay future-proofed for OS and hardware transition

Deploy new app updates and modifications faster and more easily

Using more agile, efficient and integrated processes





MCL Mobility Platform - Cloud Based Management

Panasonic ToughBook Mobile Application, Operator and Device management

Centralised Web Based Mobility System Management

Using MCL-Mobility Platform's central Cloud Console interface, site-administrators can perform various mobility devices, operator and application management tasks, such as easy 'out-of-the-box' installation and configuration of your mobile devices, device asset inventory, and re-assignment of equipment following device repairs.

It also allows for easy management and maintenance of your operator settings including the apps they need and language definitions.

Your mobility system management can be securely controlled, monitored and customized from anywhere in the world. MCL-Mobility Platform is multi-tenant solution in where each site or location of your enterprise has its own secured access and will have its own unique URL for easy and quick access. Account owners can manage access control at any level where site-managers can only login to their assigned part of the enterprise.



Panasonic TOUGHBOOK N1 Flat Computer & ProGlove Scanner

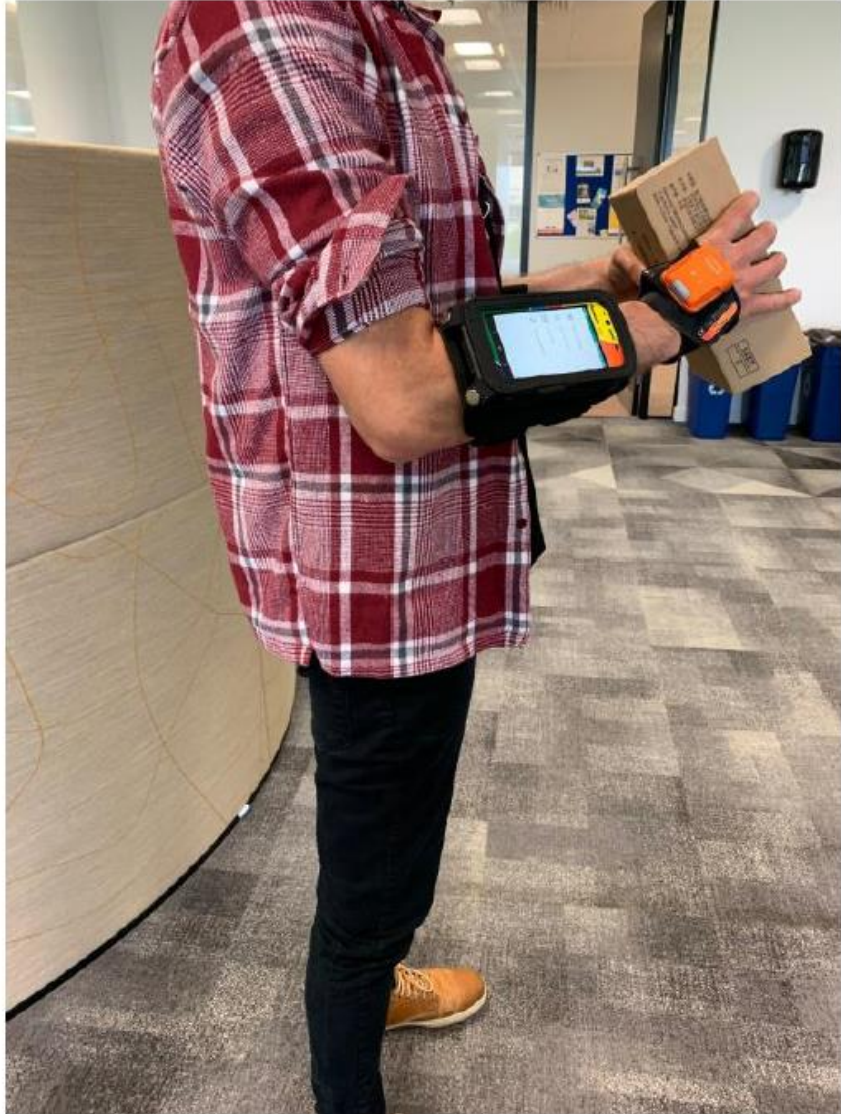


Typical Right Handed Operator

- **Left Arm Computer**
- **Right hand Scanner**

And visa versa for Left Handed operators

Panasonic TOUGHBOOK N1 Flat Computer & ProGlove Scanner



**Flexible arm
bands and gloves**

**Same Arm for
both Computer
and Scanner**

- ✓ **Maintain hands free operation at all times**
 - No pick up, set down required
- ✓ **Improve operator uptime, performance and KPI's**
 - Removes user workflow interferences
- ✓ **Reduce device set-downs and drop damages**
 - Reduces physical device impacts and break/fix costs
- ✓ **Reduce device losses**
 - Removes risk of misplaced/lost devices in shipped items



Call for pricing, demonstrations, trials

Cloud Printing Solutions Ltd

T: 0161 818 6446

W: cloudprintingsolutionsltd.com

The logo features a large blue cloud shape at the bottom containing the text 'Cloud Printing Solutions'. Above it are three smaller blue cloud shapes of varying sizes, all set within a white circular area that has a light blue border. The background of the entire slide is a solid blue color with a large white circle in the top right corner.

Cloud
Printing Solutions