

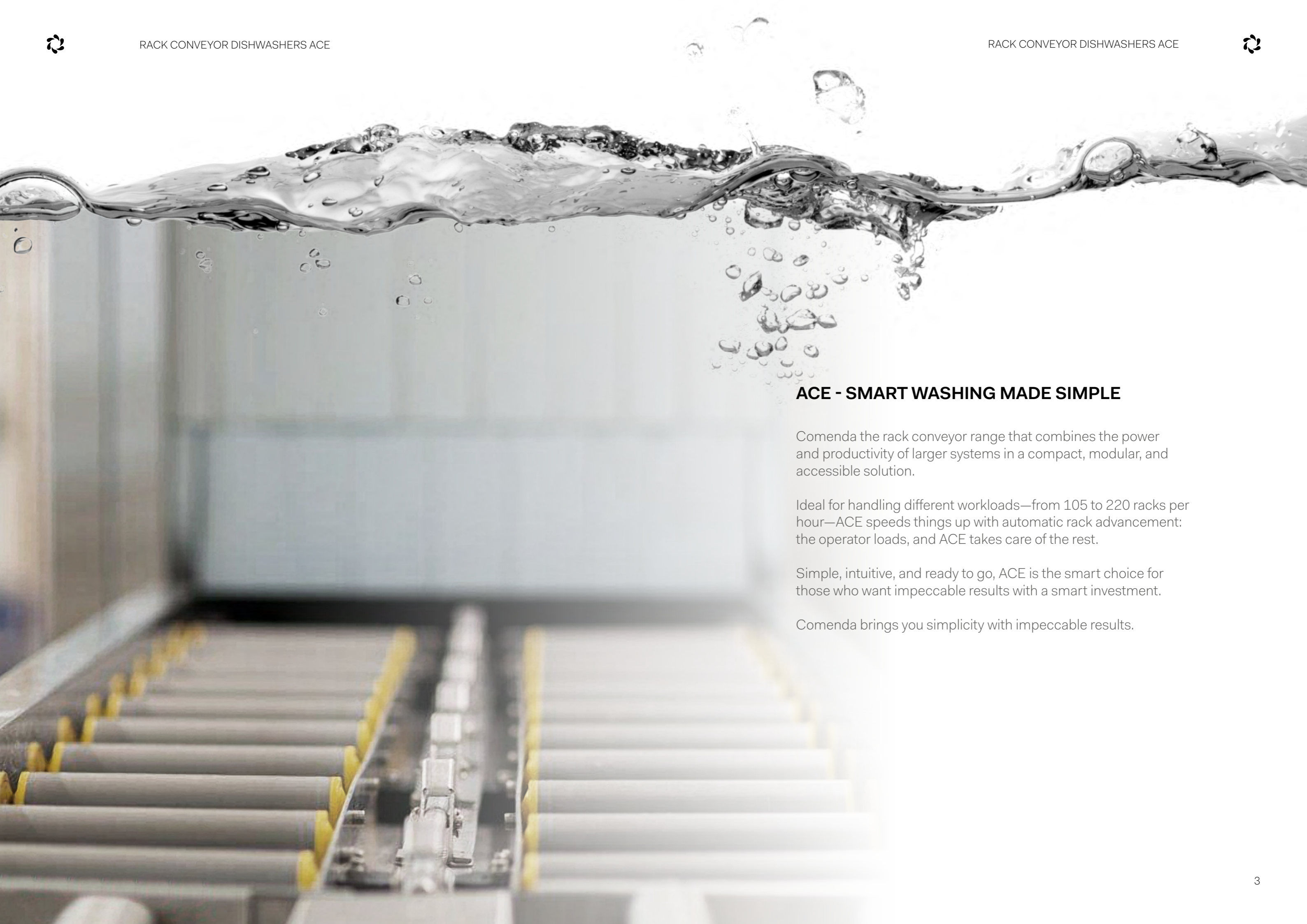
RACK CONVEYOR DISHWASHERS

# ACE

Straight to the point



**COMENDA**  
TO CLEAN. WITH CARE.



## **ACE - SMART WASHING MADE SIMPLE**

Comenda the rack conveyor range that combines the power and productivity of larger systems in a compact, modular, and accessible solution.

Ideal for handling different workloads—from 105 to 220 racks per hour—ACE speeds things up with automatic rack advancement: the operator loads, and ACE takes care of the rest.

Simple, intuitive, and ready to go, ACE is the smart choice for those who want impeccable results with a smart investment.

Comenda brings you simplicity with impeccable results.



## ACE - A COMPLETE RANGE

ACE packs all the technology and reliability of Comenda dishwashers into an accessible range designed to deliver high performance. With 9 available configurations, there's a solution for every operational need. Essential, yet complete: everything you truly need, with no compromises on quality.

### ACE

Compact rack conveyor unit with lower control panel

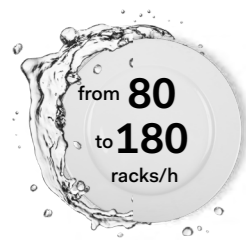
1150 mm - **Wash and rinse integrated module**



### ACE NEXT

4 configurations available in straight execution with 3 different prewash module:

- 200 mm - **Entry Splash Shield**
- 1150 mm - **Wash and rinse integrated module**
- **P4** - 400 mm Splash shield with integrated prewash system
- **P6** - 600 mm ESSENTIAL prewash module
- **P9** - 900 mm REINFORCED prewash module



ACE100 NEXT



ACE120 NEXT



ACE150 NEXT



ACE180 NEXT



## THE SOLUTION IT'S JUST AROUND THE CORNER

Comenda's ACE rack conveyor units are designed to make the most of every inch.

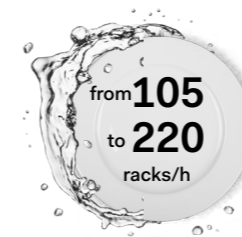
For even greater flexibility, a **1200 x 1200 mm corner configuration** for the wash module is also available — perfect for optimizing layout in **compact wash areas**.



### ACE DR NEXT

4 configurations available in straight execution with 3 different prewash module and double rinse system:

- 200 mm - **Entry Splash Shield**
- 1150 mm - **Wash module**
- **P4** - 400 mm Splash shield with integrated prewash system
- **P6** - 600 mm ESSENTIAL prewash module
- **P9** - 900 mm REINFORCED prewash module
- 400 mm - **ECORinse** module



ACE135 DR NEXT



ACE145 DR NEXT



ACE205 DR NEXT



ACE225 DR NEXT



## BUSINESS AREAS

Ideal for

### SCHOOL, UNIVERSITY & CORPORATE CANTEENS



### HO.RE.CA



### CENTRAL KITCHENS



### BANQUETING & EVENTS



### HOSPITALS & HEALTHCARE SECTOR

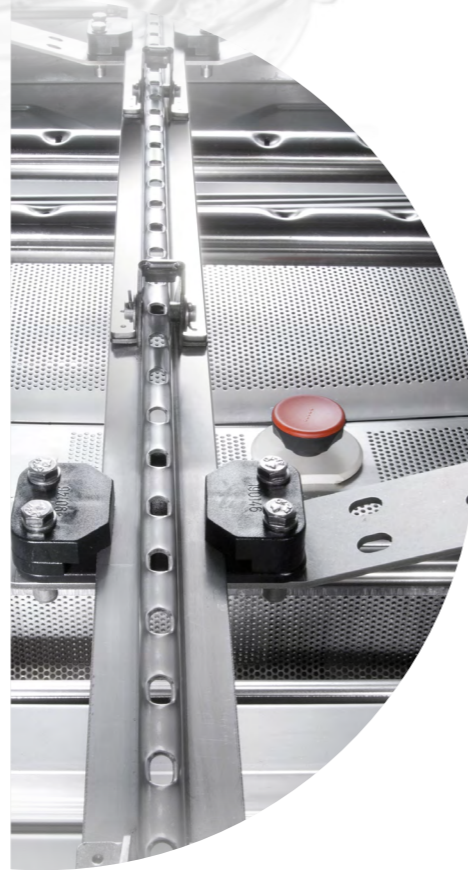




## FEATURES

### DURABILITY

- **AISI 304 stainless steel** tank chassis and paneling;
- All prewash, wash and rinse modules feature counterbalanced Inspection doors with integral balancing springs;
- **Stainless steel central pawl bar system.** The rack is perfectly centred between the side guides for the most efficient and fluid operations.



### HYGIENE

- **Deep-drawn tanks with rounded corners** guarantees maximum hygiene and prevent dirt deposit;
- **Self-draining vertical pumps;**
- **Door wipe seal for constant cleaning** of the inside of the door;
- All components - washing and rinsing arms, filters, curtains - **are easily removable for thorough daily cleaning;**
- **Smooth internal doors:** pipes are external to washing chamber to avoid dirt deposit;
- **Whole tank stainless steel filters and safety pump suction filter;**
- **Stainless steel upper and lower inspectable washing manifolds** with negative embossed anti-drip nozzles;
- **Stainless steel upper and lower inspectable rinse manifolds.**



### FLEXIBILITY

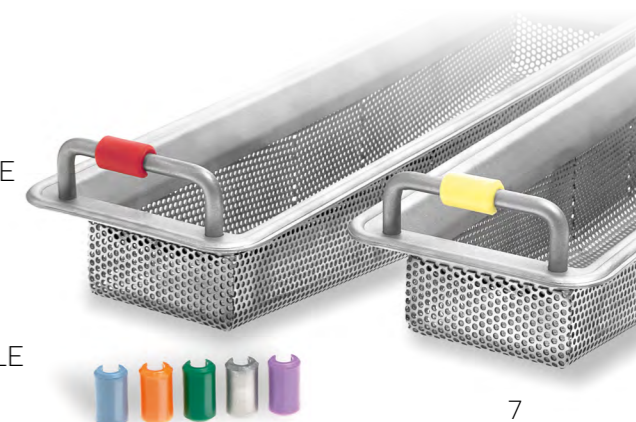
- **Ergonomic eye level digital control panel with touch-point interface** —(lower for ACE model only).
- **Inverter for Automatic Speed Control;**
- **Electrical provision for detergent and rinse aid dosing pumps connection;**
- **Feeding direction:** left / right – right / left;
- All models are available in **electric or steam execution;**
- **RCD optional** - The atmospheric booster, available on all ACE models as an option, maintains constant water flow and temperature throughout operations.



### ERGONOMICS – COLOUR CODING

Every module of our rack conveyor dishwashers as well as its internal components are identified with a colour, **to facilitate staff with cleaning operations** and in the process of preparing the machines, avoiding incorrect combinations resulting in malfunctions.

- |  |  |
|--|--|
|  SPLASH SHIELD  |  2ND WASH           |
|  DHM            |  NEUTRAL ZONE       |
|  PREWASH MODULE |  MULTIRINSE SECTION |
|  1ST WASH       |  DRYER MODULE       |





## THE WASHING PROCESS

An effective prewashing action means you can count on cleaner water in the wash tadishwaregher level of hygiene inside the washing chamber and, as a results, a more effective wash.

That's why the ACE range includes two pre-wash modules to choose from, along with an active rehydration zone — smart solutions designed to meet the specific needs of any professional kitchen.

### STANDARD

#### ENTRY SPLASH SHIELD

The splash shield prevents splashing of water to the exterior of the machine. Available also in EASY FIT configuration: the new space saving option. It allows you to connect the tables directly to the machine.



#### P4 - 400 mm SPLASH SHIELD WITH INTEGRATED PREWASH SYSTEM

The 400 mm splash shield becomes an active zone, providing an initial stage of residue removal.

A compact and efficient solution, ideal for maximizing space without compromising pre-wash performance.

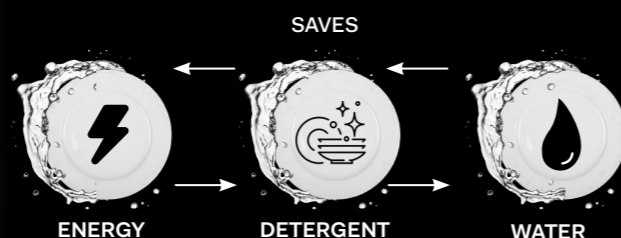
Equipped with 1 upper and 1 lower prewash arms with 4 nozzles each, this module rehydrates food residue on surfaces — boosting the overall effectiveness of the wash cycle.

### OPTIONAL

#### AUTOTIMER

Autotimer is optional for all ACE models.

This energy saving device automatically puts the unit in stand by mode when no dishes are detected in the tunnel.



#### P6 - 600 mm ESSENTIAL PREWASH MODULE

Featuring 2 upper and 2 lower prewash arms equipped with 24 nozzles, providing a consistent action on food residues.

The sliding filtration system guides the collected residues into a basket filter.



#### P9 - 900 mm REINFORCED PREWASH MODULE

Featuring 4 upper and 4 lower prewash arms equipped with 48 nozzles, providing an intensive action on food residues. The comprehensive 'Extra Large' double sliding filtration system covers the entire tank surface, channeling food residues collected during the prewash phase into a basket filter.





## THE WASHING PROCESS

STANDARD

### ACE E ACE NEXT - WASH & RINSE MODULE

**ACE model features a 1150 mm wash and rinse module.**

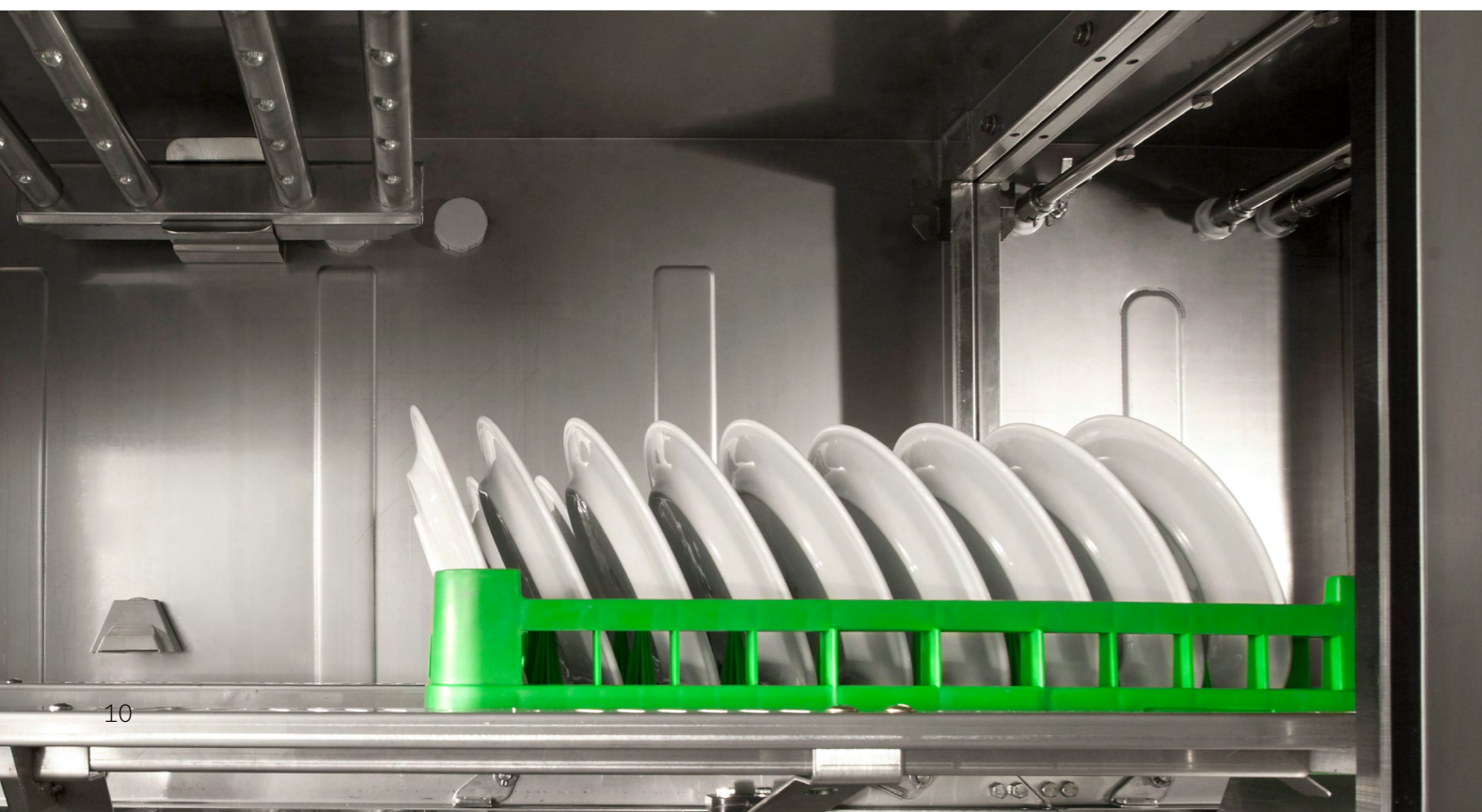
During washing process, food residues are removed thanks to the joint action of the detergent, water and an easily removable **2 upper and 2 lower washing arms with 24 nozzles.**

The water can reach all surfaces with no blind spots. The stainless steel filter system, placed on the entire surface of the tank, guarantees effective water filtering.

STANDARD

### ACE DR NEXT - WASH MODULE

In the main **1150 mm washing module**, the water can reach all surfaces with no blind spots. This is possible thanks to **4 upper and 4 lower washing arms with 48 nozzles.** The **double stainless steel filter system** covering the whole tank surface collects and conveys the dirt into a basket filter and guarantees an effective water filtration.



STANDARD

### ACE & ACE NEXT - RINSE MODULE

In the rinse area - thanks to **1 upper and 1 lower rinsing arms with 4 nozzles each** - **clean water at high temperature is sprayed.** The correct dosage of rinse aids ensures optimal results and triggers the drying process of clean items.

The rinse section is equipped with an **economizer, which allows for a rationalization in the consumption of water and energy, activating the rinse only in the presence of racks.**

STANDARD

### ACE DR NEXT - ECORINSE

Thanks to the ECORINSE technology, the upper and the lower pre-rinse arms remove the detergent from the dishes surface by reusing water. After a drop down area, **1 upper and 1 lower rinse arms permanently free the surfaces from water and detergent.**





## EVERYTHING UNDER CONTROL

### STANDARD

#### CONTROL PANEL

The control panel of the AC2 series is practical and resistant to knocks and water spray.

**It is simple to use and operate: a simple diagnostic with temperature display and alarm codes and a manual selection between 2 speeds.**



### OPTIONAL

#### PCE - PROVISION FOR PEAK POWER REDUCTION CONNECTION

This system allows the dishwasher to be connected to an energy management system that handles power peaks caused by multiple appliances running at the same time. It temporarily turns off one or more appliances based on a set priority, helping to reduce overall energy use and avoid overloading the electrical system.



## COMPLET YOUR UNIT

### OPTIONAL

#### DRYER AND HEAT RECOVERY SYSTEMS

##### AS - DRYING TUNNEL

**600 mm blower drying module is available in straight (AS6) and corner (TC90 - TC180) configurations.**

The air inside the machine is heated in a battery with heaters and blown on the dishware by means of an upper jet which is adjustable to optimize the result. Part of the warm air of the dryer is recycled through a suction system within the module and mixed with clean air to decrease humidity, considerably reducing energy consumption.



##### RC - HEAT RECOVERY UNIT

Fitted on the rinse section, enables the machine to be **connected to cold water at 15°C**, which is heated up to 50°C and transferred to the rinse booster. It promotes consistent energy savings.

- **40% ENERGY** required to heat rinse water
- **Up to 20% reduction in TOTAL INSTALLED LOAD**
- **Single point air extraction:** drastic reduction in the volume of steam released in the work environment by your machine.\*

\*Compared to a similar model with cold water connection and without any Heat Recovery unit





## AT YOUR SIDE SINCE 1963

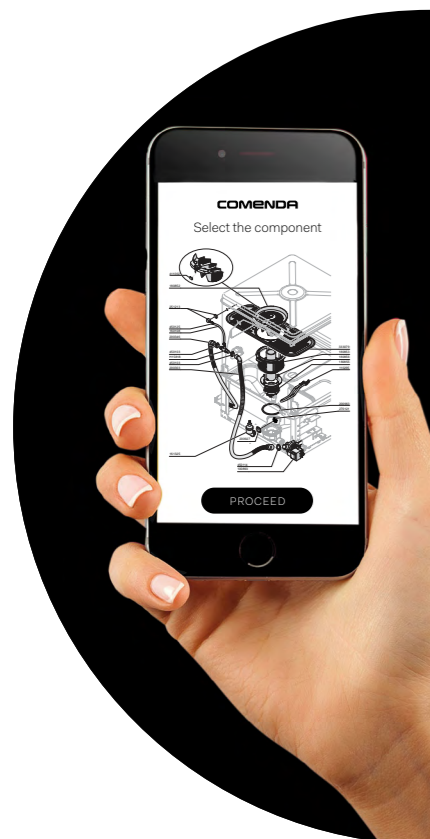
As the parent company of Ali Group, Comenda offers professional washing machines rigorously **“Made in Italy”**, according to the highest quality standards.

**Comenda solutions range from small-sized cup and glass washers for bars to large, automated, continuous feed systems for restaurants, hospitals, canteens and inflight catering.**

Our operational flexibility allows us to supply **tailor-made systems, designed to meet individual space and operation requirements, without any limits on processing capacity and granting the highest standards of hygiene.**



Championing exceptional performance, cost containment and highly energy efficient design since 1963.



## ORIGINAL SPARE PARTS 24/7

You can order directly from our website and check real-time parts availability, **24 h a day and 7 days a week.**

On our website you can: **access and download technical documentation on our machines** (product manuals and detailed electrical and hydraulic schematics); find answers to the most frequently asked questions and **watch Comenda video tutorials.**



## SPEED. SERVICE. SOLUTIONS.



There's no time for downtime in your operation. That's why our products are designed to facilitate quick turnarounds and replacements.

**Comenda ensures rapid response and complete client service.**

Our extensive network of distributors and service providers are ready to assist when in need.



## NEVER STOP TRAINING

To support the ongoing training of our distributor and service network, we encourage our partners to attend our in-house, hands-on seminars. Ask our team for specific onsite training for operators and staff.



TECHNICAL DATA

ACE

Rack conveyor dishwashers

	ACE •	ACE100 NEXT •	ACE120 NEXT •	ACE150 NEXT •	ACE180 NEXT
EXTERNAL DIMENSIONS (LxPxH) (mm)	1150 x 790 x 1450/2000*	1350 x 790 x 1680/2000*	1550 x 790 x 1680/2000*	1950 x 790 x 1680/2000*	2250 x 790 x 1680/2000 *
CLEARANCE (mm)	500x430	500x430	500x430	500x430	500x430
WASH TANKS VOLUME (l)	80	80	80	125	160
RINSE WATER CONSUMPTION (l/rack)	220	220	250	300	390
MAX. CAPACITY - speed I - EN17735 Hot water connection (racks/h)	70	80	95	115	135
MAX. CAPACITY - speed II - EN17735 Hot water connection (racks/h)	100	105	120	150	180
INSTALLED LOAD ● (kW)	19,03	19,03	21,03	24,02	30
INSTALLED LOAD ● (kW)	31,03	31,03	34,03	39,02	41,4
INSTALLED LOAD (WITH HEAT RECOVERY SYSTEM) ● (kW)	22,1	22,1	23,6	28,1	34,4

- Electric or Steam execution
- Cold water connection (15°C)
- Hot water connection (55°C)
- \* Overall Size

The previous non-binding guidelines outline the ideal operating conditions for the machines. Comendavalues may vary depending on installation conditions and the items being washed. The operator is responsible for selecting the appropriate cycle and speed based on the level of soiling, taking into account both the current and expected washing and rinsing performance. Local conditions, such as the temperature of incoming water and the power supply, may require adjustments to these values. The actual volume of rinse water may also vary depending on site-specific conditions. Comenda Ali Group srl reserves the right to modify product specifications at any time without prior notice.



TECHNICAL DATA

ACE NEXT

Rack conveyor dishwashers

	ACE 135 DR NEXT •	ACE 145 DR NEXT •	ACE 205 DR NEXT •	ACE 225 DR NEXT •
EXTERNAL DIMENSIONS (LxPxH) (mm)	1750 x 790 x 1680/2000*	1950 x 790 x 1680/2000*	2350 x 790 x 1680/2000*	2650 x 790 x 1680/2000*
CLEARANCE (mm)	500x430	500x430	500x430	500x430
WASH TANKS VOLUME (l)	80	80	125	160
RINSE WATER CONSUMPTION (l/rack)	200	220	280	300
MAX. CAPACITY - speed I - EN17735 Hot water connection (racks/h)	105	120	140	160
MAX. CAPACITY - speed II - EN17735 Hot water connection (racks/h)	135	145	205	220
INSTALLED LOAD ● (kW)	21,90	22,90	25,90	27,14
INSTALLED LOAD ● (kW)	31,9	33,9	39,89	42,14
INSTALLED LOAD (WITH HEAT RECOVERY SYSTEM) ● (kW)	24,95	26,45	28,94	31,19

- Electric or Steam execution
- Cold water connection (15°C)
- Hot water connection (55°C)
- \* Overall Size

The previous non-binding guidelines outline the ideal operating conditions for the machines. Comendavalues may vary depending on installation conditions and the items being washed. The operator is responsible for selecting the appropriate cycle and speed based on the level of soiling, taking into account both the current and expected washing and rinsing performance. Local conditions, such as the temperature of incoming water and the power supply, may require adjustments to these values. The actual volume of rinse water may also vary depending on site-specific conditions. Comenda Ali Group srl reserves the right to modify product specifications at any time without prior notice.



OPTIONAL

	ACE	ACE NEXT	ACE DR NEXT
200 mm Entry Splash Shield	○	●	●
200 mm Exit Splash Shield	○	○	○
200 mm EASY FIT Splash Shield	○	○	○
200 mm splash shield with collar – 1550 h mm	○	○	○
200 mm splash shield with collar and extraction fan – 1740 h mm	○	○	○
Accessories, conveyor systems and prescrap stations	○	○	○
PCE - Provision for peak power reduction connection	○	○	○
RCD - Atmospheric Booster	○	○	○
RC/RC25 - Heat Recovery Unit	○	○	○
AS - Blower Dryer 600/800 mm	○	○	○
TC90 - Blower Dryer on 90° exit curve without motor 1000x1000 mm	○	○	○
TC180 - Blower Dryer on 180° exit curve with motor 1500x1000 mm	○	○	○
Airflow chanel from the heat recovery unit to the dryer	○	○	○
Surcharge for cold water feed execution booster	○	○	○
2-in-1 Detergent and Rinse Aid dosing pumps with Probe	○	○	○
Integrated central drain	○	○	○
Steam Heated Execution	○	○	○
Special Voltages	○	○	○
Drain pump	○	○	○
Autotimer	○	○	○
Surcharge for conversion of wash module to 1200 x 1200 mm corner execution	○	○	○

● = STANDARD

○ = OPTIONAL



CONTATTI

Comenda Ali Group  
Via Galileo Galilei 8  
20051 Cassina de' Pecchi (MI)  
Italia  
T +39 02 952281  
sales@comenda.eu  
www.comenda.eu



Azienda con sistema di gestione qualità/ambiente certificato  
secondo le norme ISO9001 e ISO14001:2015.  
*Comenda complies with ISO9001 quality management system  
and ISO14001:2015 environmental management system.*

Cod. 900920IT11.22 - Con riserva di variazione delle caratteristiche tecniche. Foto non vincolanti.



an Ali Group Company



The Spirit of Excellence