

NEVER MORE WITHOUT.

DHM LI

Automatic standalone pre-scrap module



COMENDA
TO CLEAN. WITH CARE.



THE FIRST STEP IS ALWAYS THE MOST IMPORTANT

Pre-scrap & prewash: best washing results start from here!

Sorting the dishware to be loaded into the washing machine is a crucial operation and must be performed properly, avoiding unnecessary waste of water, chemicals and time.

Automatic or manually operated, an effective prewashing action means you can count on cleaner water in the wash tank, a higher level of hygiene inside the washing chamber and, therefore, a more effective wash.



Manual prescrap is a heavy operation for the staff that, during peak times, might not be able to cope with high volumes and dirty dishes, thus leading to a lack of care.

The operator must be properly trained on correct and responsible operations, avoiding unnecessary waste of resources and time.

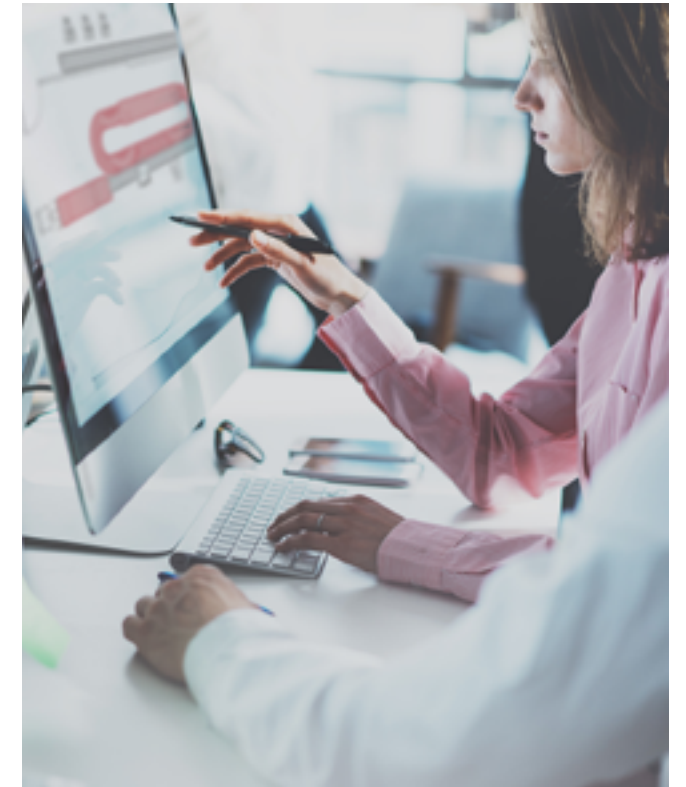
Moreover, prolonged work in standing and by fumes of hot, dirty water laden with chemicals and odors in the wash up area could cause MSDs and other discomfort to the operator.



We, at Comenda, know what it means to cope with shifts at a fast pace, to work in a humid work environment and in contact with high temperatures, **the struggle with daily machine cleaning operations.**

We know it thanks to an ongoing open dialogue with our customers for over fifty years. This daily confrontation helps us to **design solutions must serve to improve and simplify people's work.**

If you want proof, discover DHM LI. Automatic standalone pre-scrap & prewash module.



Flexible and adaptable, **DHM LI is the retrofit solution for existing rack conveyour units, independently from their make.**

It allows to adjust or reorganize your wash up area, by better organizing staff operations and creating a more comfortable work environment, reducing the amount of waste water, and significantly improving washing results!

With DHM LI it's never too late!



THE POWER OF SIMPLICITY

Comenda technology for automatic prescrap & prewash modules is **designed to meet different needs and prepare the dishware for a consistent wash.**

By **simulating the effect of a prerinse hose on the dishware**, it attacks food residues through three different actions: Hydration, Detachment, Elimination, **featuring a combination of different jet patterns and projection angles of the upper and lower arms designed to remove soiled particles on the dishware.** In this section dirt and food residues are “mechanically” removed from the dishware! Ready to wash!
In this section, dirt and food residues are “mechanically” removed from the dishware, making it ready to be washed!



NEXT TO THE PEOPLE NEXT TO THE ENVIRONMENT



Comenda multi-stage prewash system guarantees a reduction in water consumption by up to 90%. Estimated water consumption with a prerinse hose is 10 liters/minute; **Comenda DHM LI technology uses only 1 liter a minute!**

Moreover, **it allows to better organize the wash up staff work by eliminating the need of the prerinse sink** and preventing operators from suffering from MSDs and other discomfort.



THE BENEFITS OF AN AUTOMATIC PRE-SCRAP & PREWASH MODULE

AUTOMATION:

controlled mechanical action for more efficient and thorough cleaning.



EFFICIENCY:

it allows to better organize the wash up staff work.

ERGONOMICS:

more comfort to the operator, preventing MSDs and other discomfort caused by repeated movements.



TO CLEAN. WITH CARE. :

Cleaner water in the wash tank. Flawless results and reduced detergent & water consumptions.



TIME SAVINGS:

it speeds up loading operations and guarantees smooth operations.



WATER SAVINGS:

controlled water consumption optimizing the resources available.

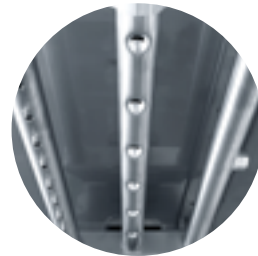




AUTOMATIC PRE-SCRAP MODULE: DMH LI/ALI



INSPECTION DOOR
Double skin insulated doors, minimising the loss of energy and the noise level. The special shape of the seal allows the door to be cleaned automatically when opening and closing.



UPPER ARMS PREWASHING
Stainless steel upper multiwash inspectable prewashing arms with negative embossed anti-drip nozzles.



RED SYSTEM
Integrated Automatic Soil Removal.



DEDICATED CONTROL PANEL
Lower control panel, simple and intuitive, with Emergency Stop Button.

BELT DRIVE CONTROL SYSTEM
Stainless steel central pawl bar system. The rack is perfectly centred between the side guides for the most efficient and fluid operations.

LOWER ARMS PREWASHING
Stainless steel lower multiwash inspectable prewashing arms with negative embossed anti-drip nozzles.

TRIPLE FILTRATION SYSTEM
AISI 304 Stainless steel tank chassis and paneling. Deep-drawn tank with rounded corners. Self-draining vertical pump. Whole tank stainless steel filter and external basket filter.



MULTI-STAGE PREWASH TECHNOLOGY



HIGHER PRESSURE WATER JETS

Thanks to the higher pressure water jets, the first upper arm **removes the most stubborn stains.**



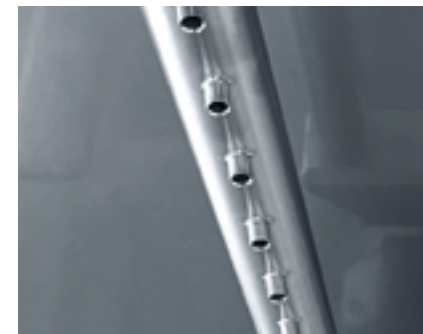
V-SHAPED WATER JETS

Second upper arm and two lower arms with V-shaped jets to **dissolve food residues.**



CASCADE WATER JET

The third upper arm, with a cascade water jet, **completes the pre-scraping action.**



RED - AUTOMATIC SOIL REMOVAL

Food residues produced during prewashing cycle are absorbed by a filter connected to the drain pump. Dirt is conveyed in a basket filter placed in an external tank. At the end of this process, food residues are separated from water.

The innovative RED System is entirely made in AISI 304 stainless steel; it can be removed and cleaned, even with the machine in operation, granting no downtime and the maximum hygiene.

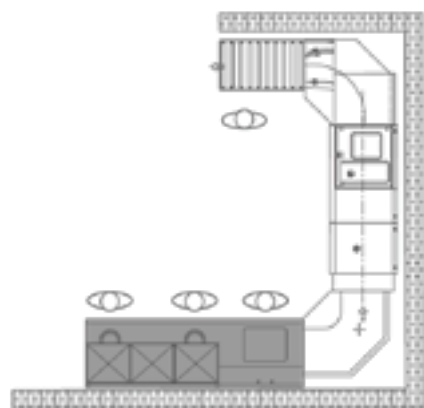


DHM LI/ALI IS THE NEW BLACK

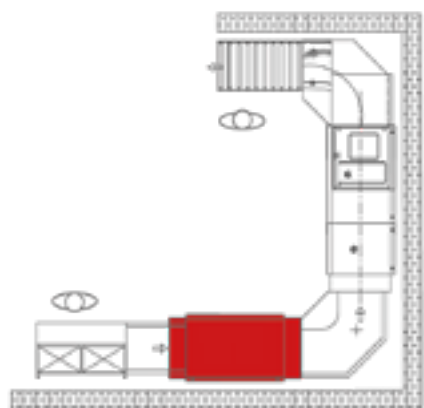
Need to prepare the dishware for a consistent wash, better organize your staff work, always counting on impeccable washing results while minimizing your operating costs?

DHM LI is the right solution for you.

Thanks to its extreme flexibility, **it can be installed at any Comenda tunnel unit's entrance, current and superseded models, as well as for rack conveyor models from other manufacturers.**

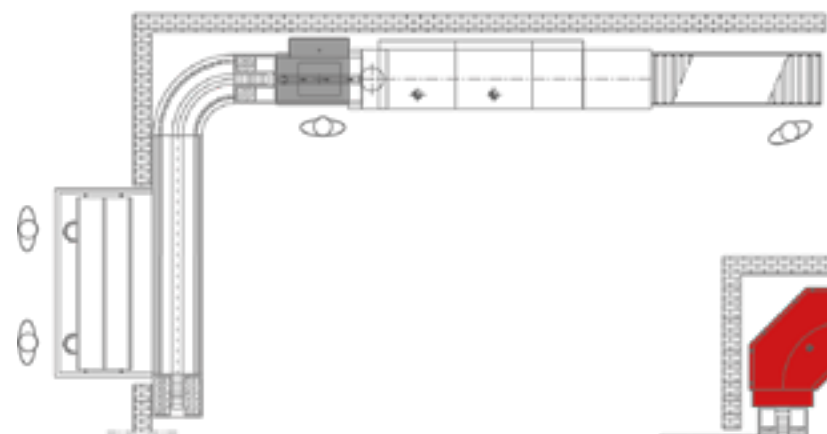


MANUAL
PRE-SCRAP

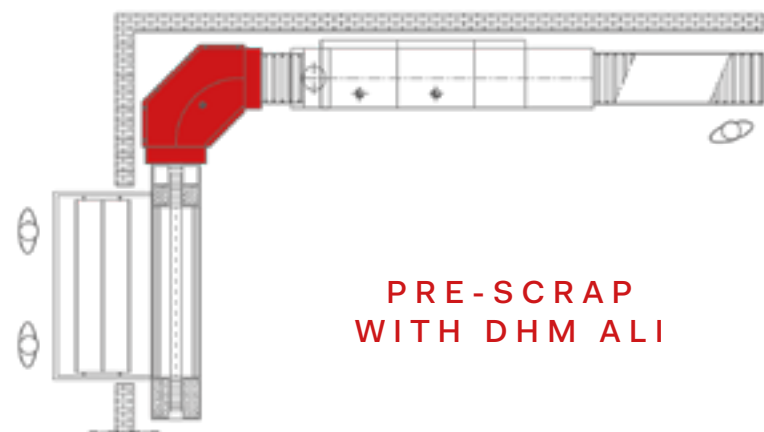


PRE-SCRAP
WITH DHM LI

Heavy duty stand alone automatic prescrap station in straight configuration (DHM LI) installed at the entrance of a Comenda NEXT series rack conveyor (2020).

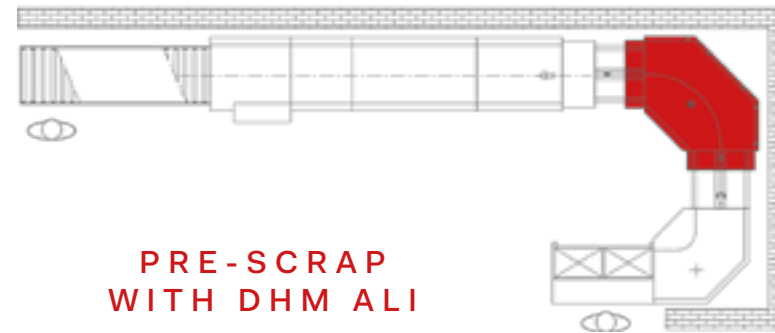


MANUAL
PRESCRAP



PRE-SCRAP
WITH DHM ALI

Heavy duty stand alone automatic prescrap station in corner configuration (DHM ALI) installed at the entrance of a Comenda ACRS series rack conveyor (2008).



PRE-SCRAP
WITH DHM ALI

Heavy duty stand alone automatic prescrap station in corner configuration (DHM ALI) installed at the entrance of a rack conveyor unit from other manufacturer.



DHM ALI. THE SOLUTION IS AROUND THE CORNER

Stand alone prescrap station is also available in corner configuration (DHM ALI), to make the most of every inch.





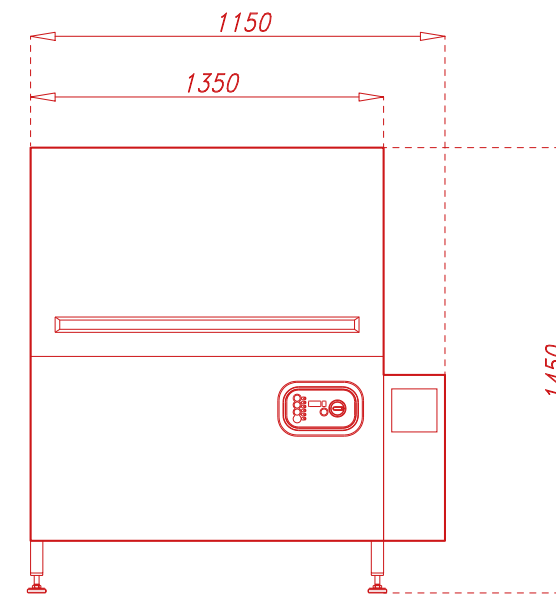
TECHNICAL FEATURES

DHM LI / ALI

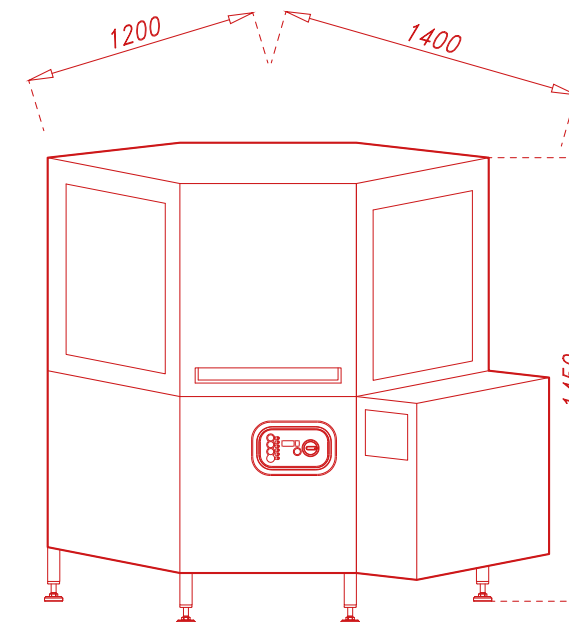
Motor drive	0.18 kW
Wash Pump	0.86 kW
Recirculation Pump	0.1 kW
Drain Pump	0.1 kW
Tank Capacity	80 l
Tank Heating Element	6 kW
Power Supply	400 V 3N~
Frequency	50/60 Hz
Installed Load	7.24 kW

STANDARD FEATURES

- **Autotimer** enables the pumps to be stopped when there are no racks inside the module. The machine automatically starts to operate again when new rack is loaded. This solution achieves considerable energy savings.
- **Inverter (1 speed)** - DHM LI works in full harmony with the rack conveyor unit it is connected to.
- **Color Coding** for identification of the module and its internal components. This helps with daily cleaning operations and machine preparation process, avoiding incorrect combinations and malfunctioning.
- **Limit switch contactor.**
- **Door wipe seal** for constant cleaning of the inside of the door
- 24V control circuit.



DHM LI



DHM ALI



cod. 900995EN



Comenda

Via Galileo Galilei 8
20051 Cassina de' Pecchi (MI)
Italia
T +39 02 952281

sales@comenda.eu
www.comenda.eu



an Ali Group Company



The Spirit of Excellence