



# Specialty Product: Maine Grown Sod

We offer fresh-cut sod sourced from a local farm in Berwick, Maine, providing a reliable option for establishing healthy, vibrant lawns. Sod is picked up and delivered to our yard on a weekly basis to ensure peak freshness and quality.

Orders processed at the farm require a 500 square foot minimum. Smaller orders can be accommodated by combining them with other customer requests, though this may extend fulfillment times.



Sod is available by special order only and is not kept in stock, allowing us to provide fresh-cut product. This ensures better lawns, healthier root systems, and improved results once installed.

Orders may be picked up at our shop within 48 hours of ordering, or scheduled for delivery through our team. Lead times may vary slightly depending on weather and farm availability.



For delivered orders, pallets can be returned to York Woods Tree for a credit, helping reduce waste and keep projects efficient and organized.

# Setting up a Delivery

Our team is committed to ensuring that each delivery is prompt and efficient. We know everyone's project is unique, and we cater to the diverse requirements of our customers, whether it's for Spring, Summer, Fall, or Winter endeavors.



## Step 1: Choose Your Products

Select the materials you need, including bulk mulch, compost, aggregates, hardscape materials, plants, or palletized supplies.

## Step 2: Place Your Order

Orders can be placed in person or by phone to the store at 207-703-0150.

## Step 3: Schedule Delivery

Our team will help schedule delivery based on product type, quantity, location, and equipment requirements. Our trucks run from 7am to 5pm Mondays through Fridays. During our Spring busy season, we deliver on the weekends 8am to 4pm.

## Step 4: Delivery Day

Please ensure the delivery area is easily accessible and clearly marked. You do not need to be present if the order is paid for. Check for low-hanging wires or branches and adequate overhead clearance for dumping. Materials will be placed as safely and accurately as site conditions allow.

## Important Notes

Minimum 1 yard or cord for delivery.

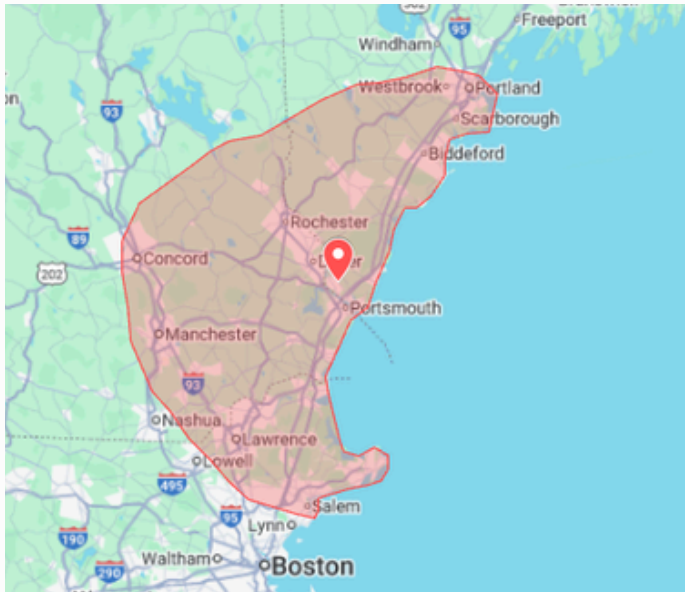
Delivery availability and timing may vary by season and weather conditions.

Our trucks do not drive on lawns without a signed waiver.

48 hour notice required for changing delivery date or cancelling.

## Delivery Fees





# Delivery Area

Bulk and wholesale deliveries available across Maine’s East Coast, New Hampshire, and Massachusetts locations.

Delivery fees are based on town, see updated pricing on our website.

## Figuring out How Much Material You Need

1 cubic yard covers roughly a 10'x10' area at 2" of depth (can be more or less depending on how compacted a material is).

Not sure how much you need? Scan to use the calculator on the right or let our team help and give us a call!

Material Calculator

Need length, width, and depth of area



## Yards of Material Per Truck

*\*These estimates are based on dry materials. If the materials are wet, the volume listed in the chart above can differ as the truck may be unable to haul the weight.*

Material	5500/6500	DUMP TRUCK	Tractor
Compost*	6 - 8 Yards	22 Yards	50 Yards
Firewood	2 Cords	3 Cords	N/A
Gravel*	4 - 5 Yards	18 Yards	30 Yards
Mulch*	15 Yards	25 Yards	70 Yards
Soil*	4 - 5 Yards	20 Yards	30 Yards
Sand*	4 - 5 Yards	18 Yards	30 Yards
Seashells	5 - 6 Yards	20 Yards	30 Yards
Stone	4 - 5 Yards	18 Yards	30 Yards
Stone Dust*	4 - 5 Yards	18 Yards	30 Yards
Wood Chips*	15 Yards	25 Yards	85 Yards

# Services: Delivery Trucks

Our smaller delivery trucks operate seven days a week during peak season and return to a regular Monday–Friday schedule for the remainder of the year. Larger trucks deliver Monday through Friday year-round, with additional Saturday deliveries scheduled as needed during the busy season.



# Services: Delivery Trucks

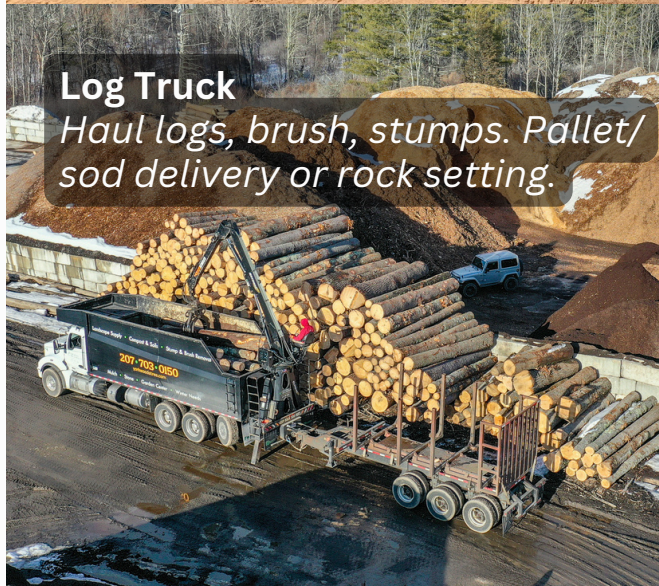
Our smaller delivery trucks operate seven days a week during peak season and return to a regular Monday–Friday schedule for the remainder of the year.

Larger trucks deliver Monday through Friday year-round, with additional Saturday deliveries scheduled as needed during the busy season.



## Dump Truck

*Mid-size bulk deliveries or hauling.*



## Log Truck

*Haul logs, brush, stumps. Pallet/sod delivery or rock setting.*



## Roll-Off Truck

*Haul wood chips off job sites, brush, stumps. Drop and swap cans. Select delivery.*



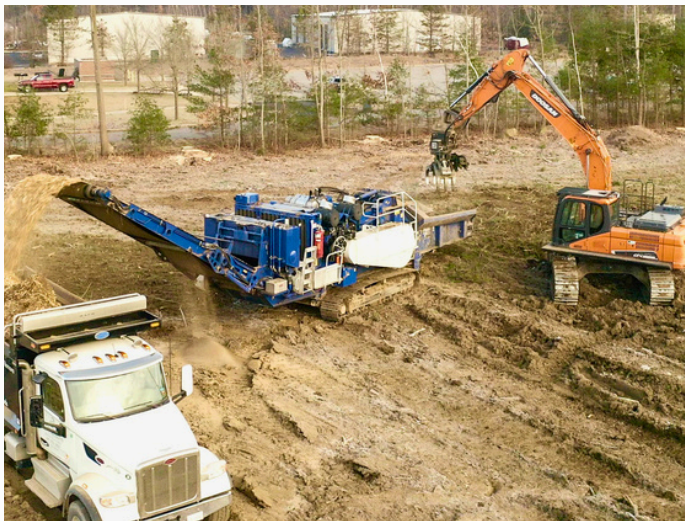
## Tractor Trailer

*Large bulk deliveries, or bio-fuel wood chip hauling.*

No Tree Too Big.

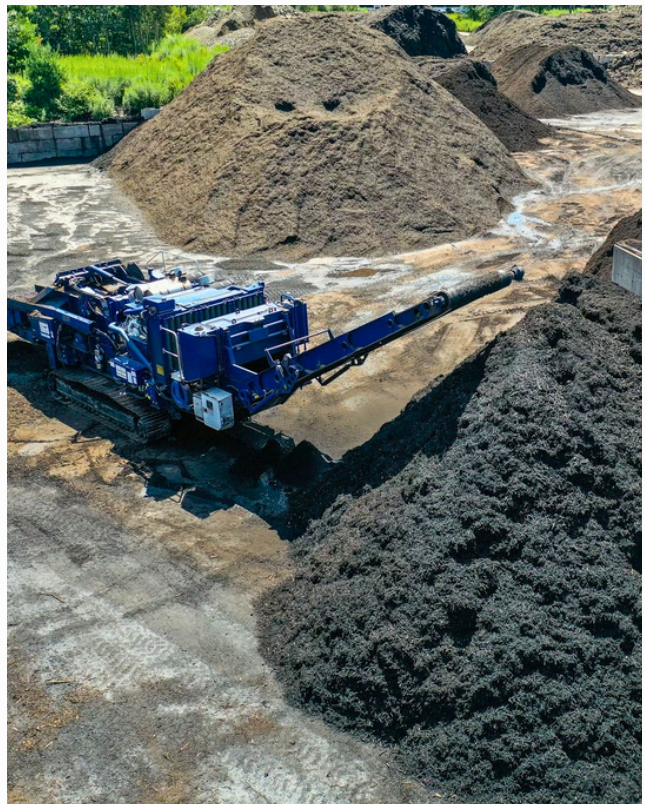
# Services: Grinding

York Woods Tree offers professional grinding services for green waste, brush, and stumps, supporting both residential and commercial projects. Material can be brought directly to our processing yard in Eliot, or our experienced team can travel to your site to complete the work on location. We partner with transfer stations and local companies to responsibly process green waste materials and grind mulch, helping divert organic material from landfills whenever possible.



Using specialized equipment, we efficiently handle jobs of all sizes, from individual stumps to large-scale clearing projects. On-site stump grinding is also available as a standalone service.

*Call our store for a free quote.*



# Services: Green Waste Recycling

We accept brush, grass clippings, branches, leaves, and other green waste at our Eliot yard, then process it into mulch, compost, or bio-fuel, keeping green waste out of landfills. Disposal cost based on truck size. All persons must stop at store and check in with a staff member prior to any disposal.



## Compost

Grass clippings, leaves, or garden debris. Must be free of dirt, rocks, trash, food waste, and invasive species.



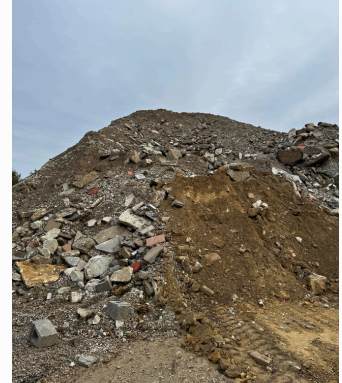
## Clean Brush

Branches, shrubs, or tree debris. Must be free of dirt, rocks, trash, and invasive species.



## Stumps

Anything with a root ball. Please remove dirt and rocks. No invasives.



## ABC

Asphalt, brick, or concrete. Please remove dirt and rebar. No invasives, no painted brick.

## We DO NOT Accept:

Boards with Nails  
Construction Debris  
Fencing or Decking  
\*Invasive Species  
Painted Brick/Rock

Painted Lumber  
Pallets  
Railroad Ties  
Trash  
Treated Lumber

## Disposal Fees

*Based on Truck or Trailer Size.*



### Common Invasive Species

[Japanese Knotweed](#) (Mexican Bamboo)

[Mile-a-Minute Weed](#)

Please visit the state of Maine's [website](#) for a complete list of invasive species.

If you are uncertain whether a plant is invasive, please consult a member of our staff for verification prior to disposal. Any invasive species improperly disposed of on-site will be either removed at the customer's expense or the customer will be contacted and required to arrange immediate removal.

# Services: Tree Clearing



Our professional tree clearing services support commercial, municipal, and large-scale projects throughout the region. With experienced crews and specialized equipment, we handle jobs of any size safely and efficiently. We no longer handle tree trimming. Call for a free quote and let us help keep your project on schedule.

