



featuring "The Woody Log Building Systems"™

Our solid log wall **Woody Classic Series**™ are shown along with the **Woody Rapid Cabin**™ log panel series showing slight size differences. The interior wall and window layouts will be almost identical or to your liking in both series of cabins. Log cabins for everyone's budget! The **Rapid Cabins** will install faster and are less expensive due to the use of SIP technology (structural insulated log panels)

**Both cabin styles when installed look almost identical**  
**A Woody brand cabin Exclusive!**

**Camp Luxury**-387-400 sq.ft.  
**Bunkfatigue**-554-560 sq.ft.  
**Great Plains**-554-560  
(2 baths)  
**Get a Way**- 576 sq.ft.  
**The Tucker** -576 sq.ft.  
(with covered porch)  
**Riverview**-640-644 sq.ft.-  
**Cabin King**- 672-688 sq.ft.  
(with covered porch)  
**Safari**-734-760 sq. ft.  
(with screen room)  
**Pony**-644-640 sq. ft.  
(with screen room)  
**Bear Cub**-768-800 sq.ft.  
**Bear Dance**-1024-1056 sq.ft.  
(with laundry)  
**Wolf Lair**-1024 sq.ft.  
(2 bath)  
**Bear Den**-1024-1056 sq.ft.  
(with screen porch)

Single Story, 2 Bedroom, 1 and 2 bath  
log cabin floor plans 387 sq.ft. to 1024 sq.ft.



Bear Den

# The Camp Luxury

250 sq.ft. storage loft option

## The Camp Luxury-CS

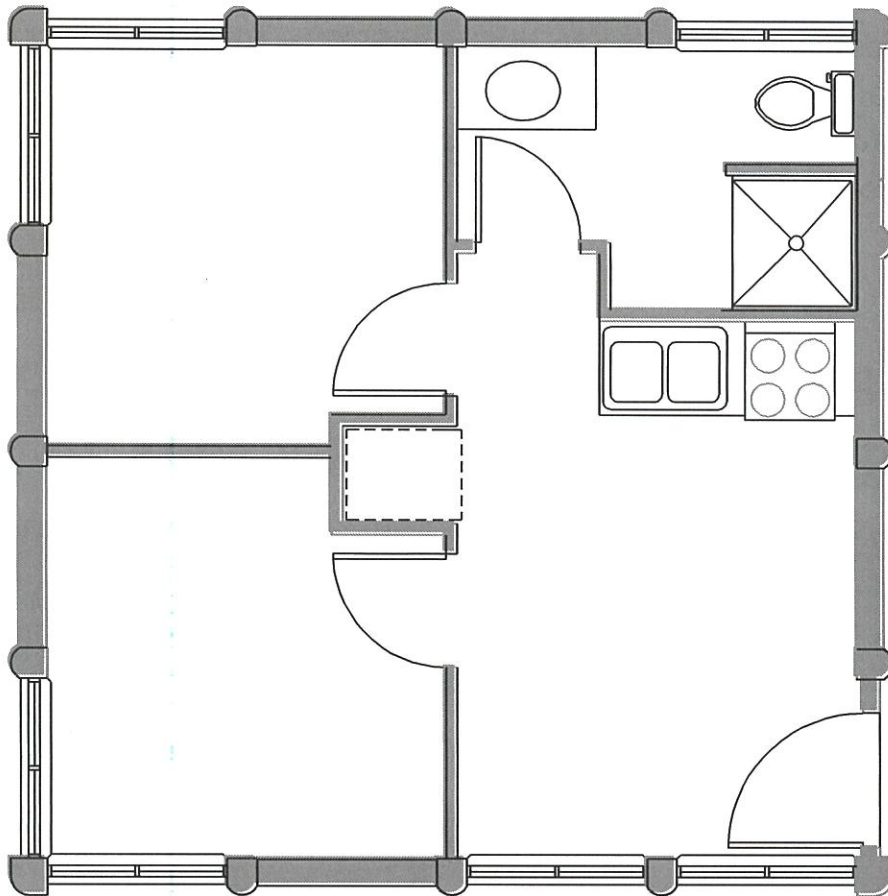
In the Classic Series

374 sq.ft. 19'4"x19'4"

## The Camp Luxury style-RC 55

In the Rapid Cabin series

400 sq.ft. 20'x20'





# The Bunkfatigue

250 sq.ft. storage loft option

## The Bunkfatigue-CS

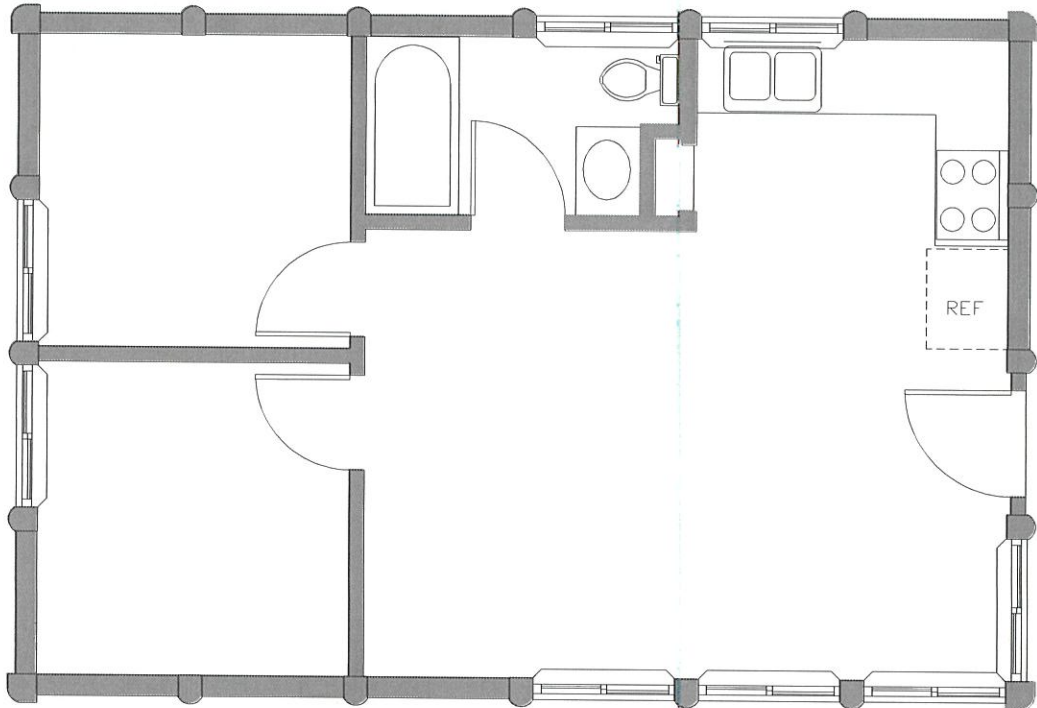
In the Classic Series

554 sq.ft. 19'4"x28'8"

## The Bunkfatigue style-RC 57

In the Rapid Cabin series

560 sq.ft. 20'x28'

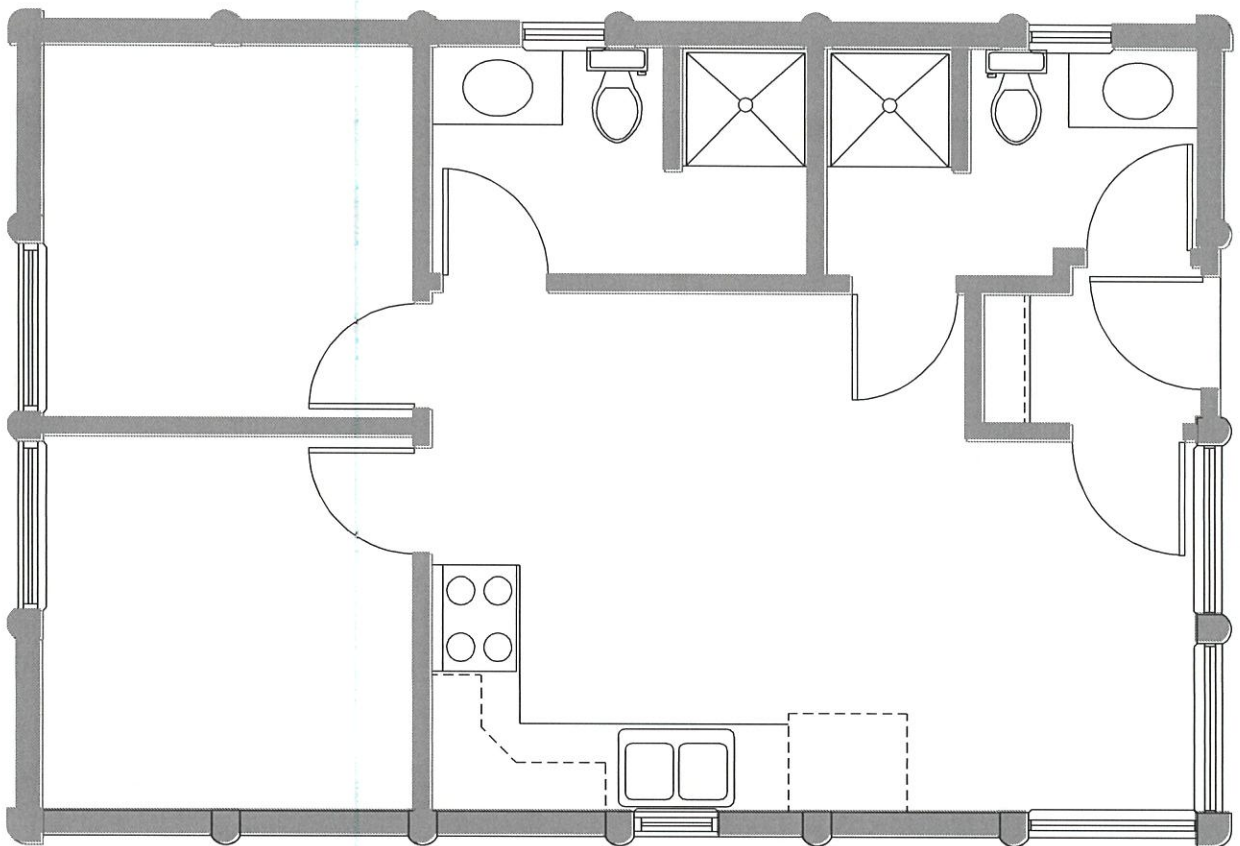


featuring "The Woody Log Building Systems"™

***The Great Plains-2 bedroom, 2 bath***  
250 sq.ft. storage loft option

**The Great Plains-CS**  
In the Classic Series  
554 sq.ft. 19'4"x28'8"

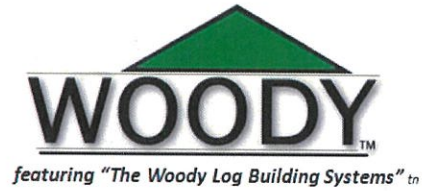
**The Great Plains style-RC 57**  
In the Rapid Cabin series  
560 sq.ft. 20'x28'



featuring "The Woody Log Building Systems"™

# *The Get-a-Way*

270 sq.ft. storage loft option



Get a Way

## **The Get-a-Way-CS**

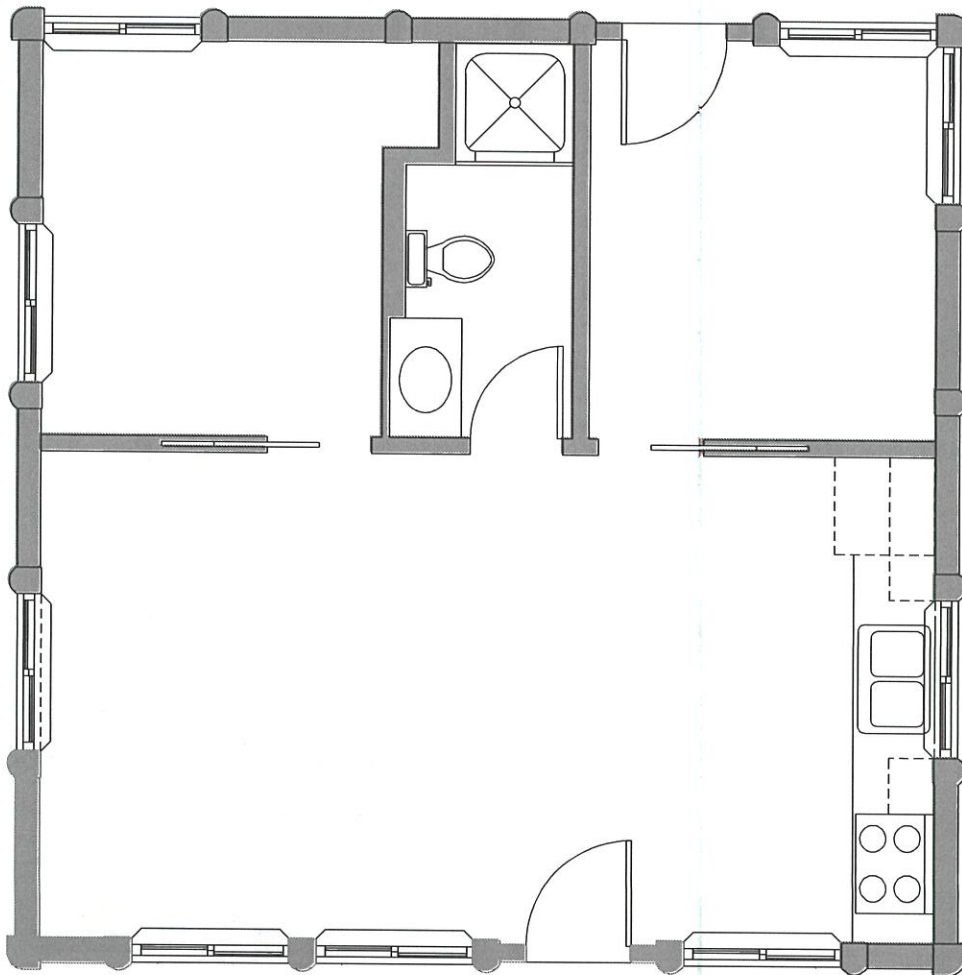
In the Classic Series

576 sq.ft. 24'x24'

## **The Get-a-Way style-RC 66**

In the Rapid Cabin series

576 sq.ft. 24'x24'



# The Tucker

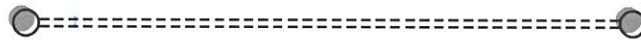
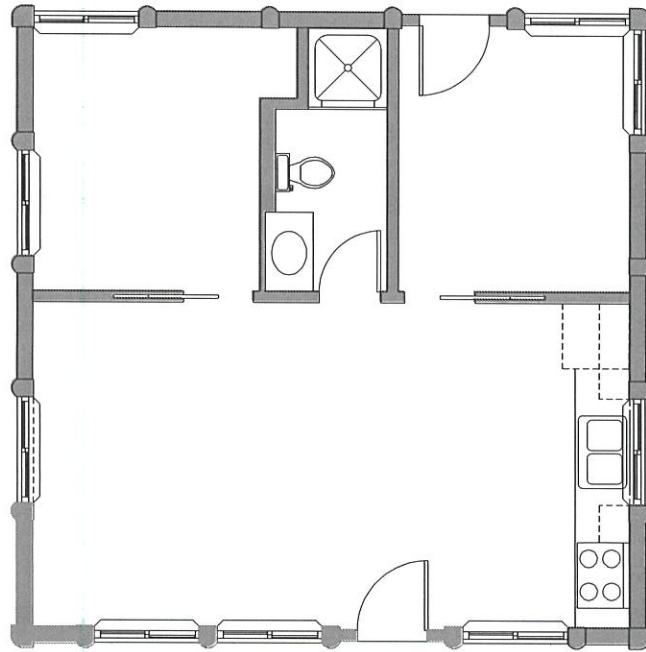
with covered porch (Get-a-Way floor plan)  
270 sq.ft. storage loft option

## The Tucker-CS

In the Classic Series  
554 sq.ft. 24'x24'

## The Tucker style-RC 66

In the Rapid Cabin series  
554 sq.ft. 24'x24'





# The Riverview

240 sq.ft. storage loft option

## The Riverview-CS

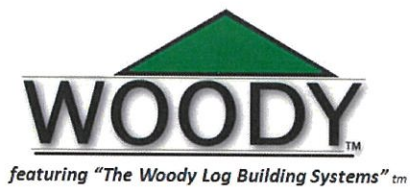
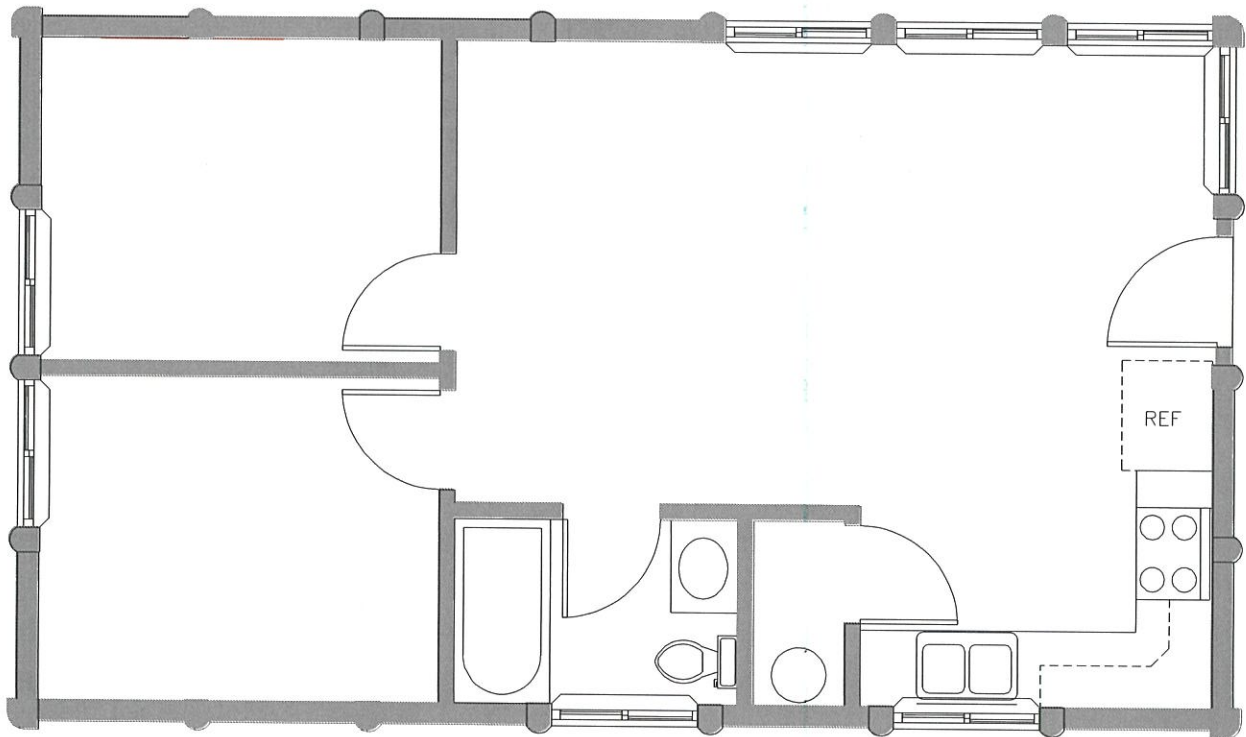
In the Classic Series

644 sq.ft. 19'4"x33'4"

## The Riverview style-RC 58

In the Rapid Cabin series

640 sq.ft. 20'x32'

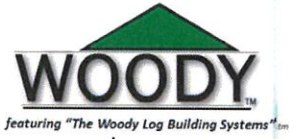
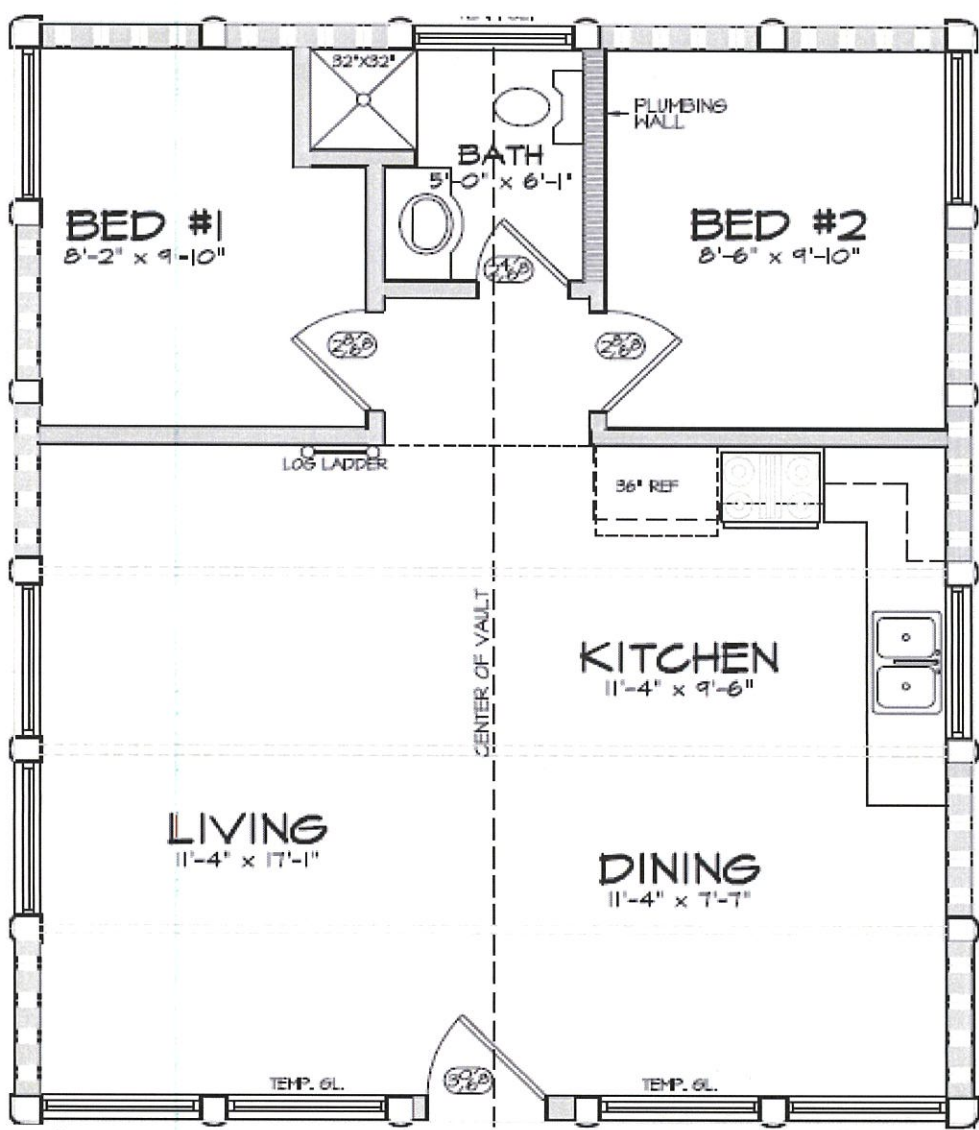


**The Cabin King**  
with covered porch  
280 sq.ft.  
storage loft option



**The Cabin King-CS**  
In the Classic Series  
688 sq.ft. 24'x28'8"

**The Cabin King style-RC 67**  
In the Rapid Cabin series  
672 sq.ft. 24'x28'





# ***The Safari***

with screen room

250 sq.ft. storage loft option

## **The Safari-CS**

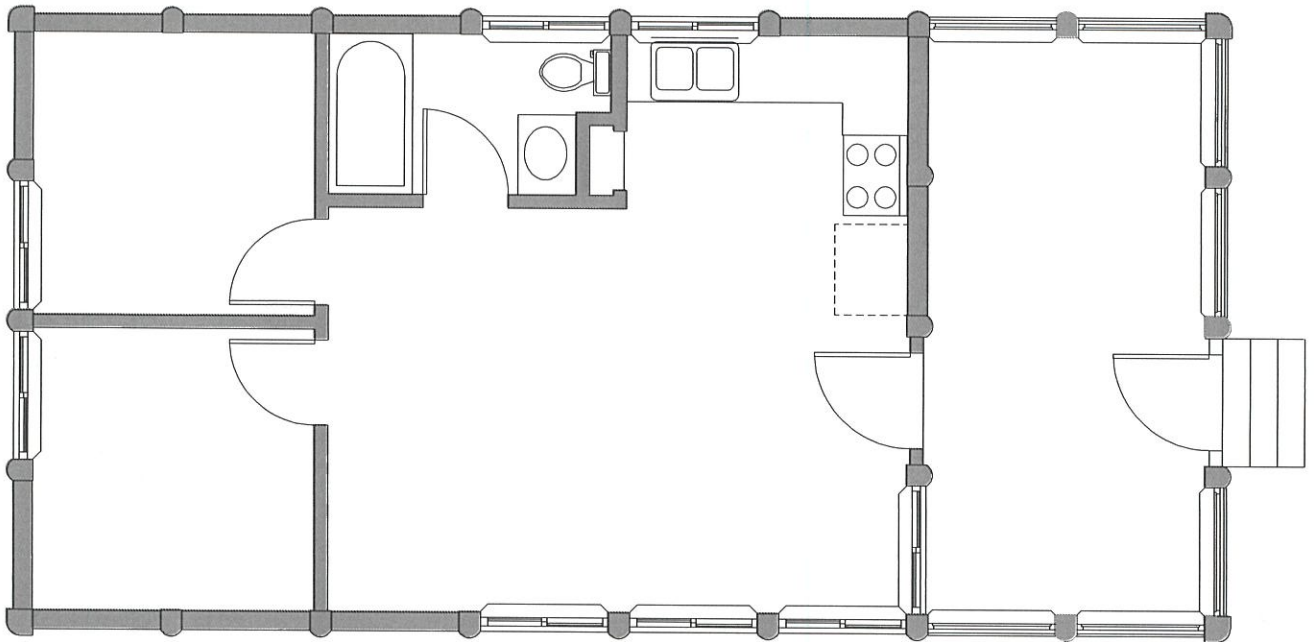
In the Classic Series

734 sq.ft. 19'4"x38'

## **The Safari style-RC 59**

In the Rapid Cabin series

760 sq.ft. 20'x36'

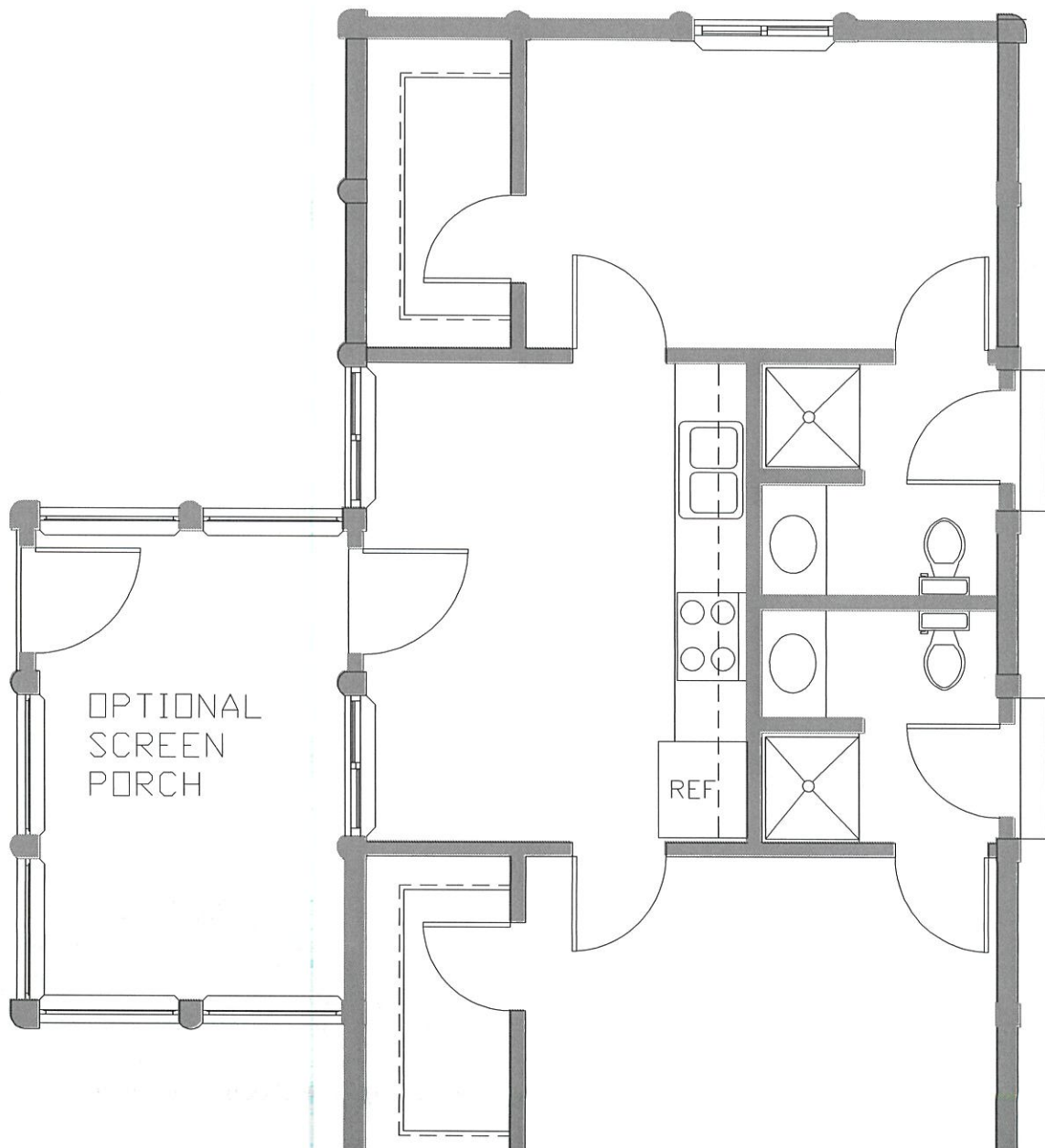


featuring "The Woody Log Building Systems"™

**The Pony- 2 bedroom, 2 bath**  
with optional screen room  
350 sq.ft. storage loft option

**The Pony-CS**  
In the Classic Series  
644 sq.ft. 19'4"x33'4"

**The Pony style-RC 58**  
In the Rapid Cabin series  
640 sq.ft. 20'x32



# The Bear Cub

250 sq.ft. storage loft option



featuring "The Woody Log Building Systems"™

## The Bear Cub-CS

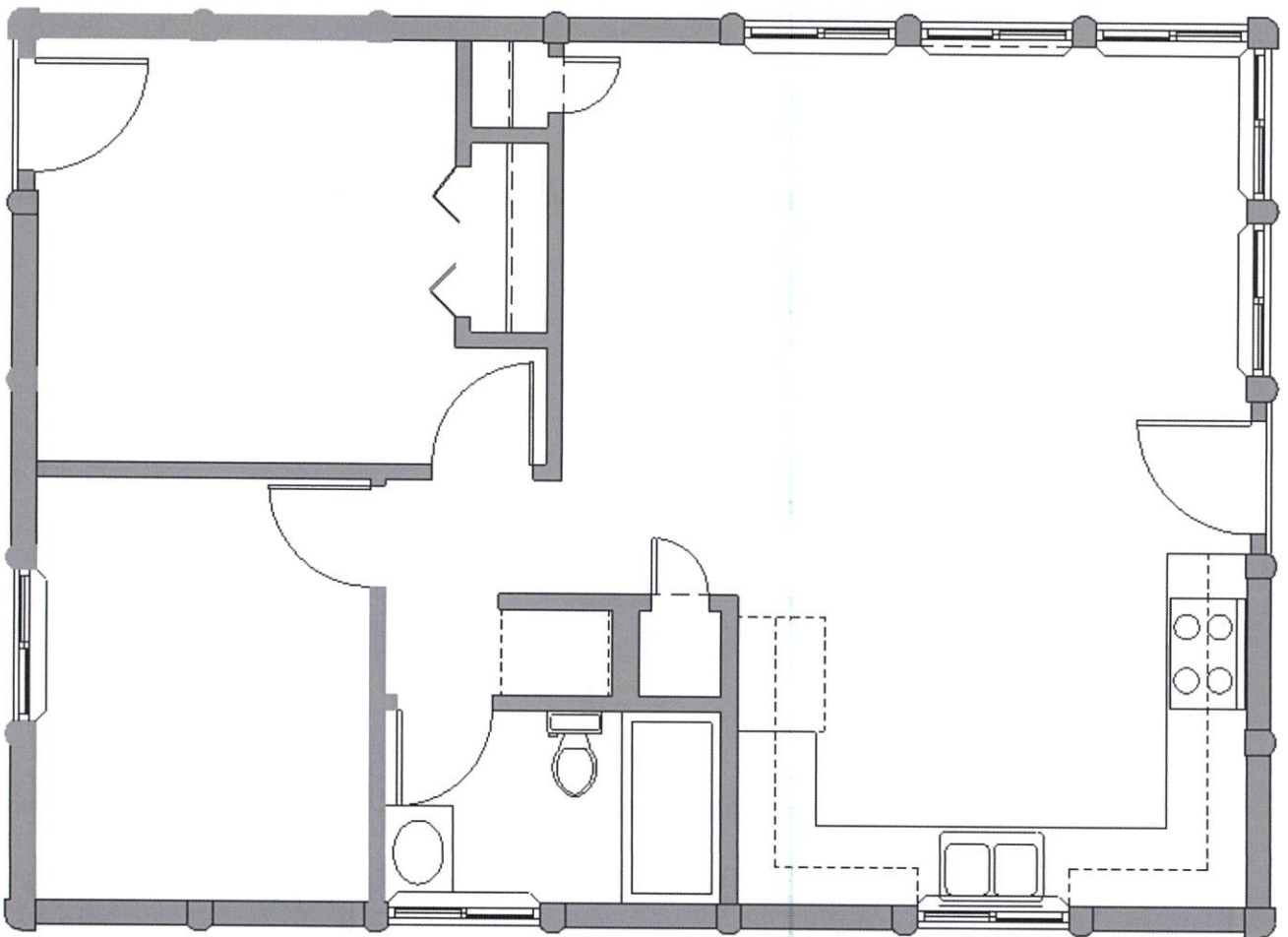
In the Classic Series

800 sq.ft. 24'x33'4"

## The Bear Cub style-RC 68

In the Rapid Cabin series

768 sq.ft. 24'x32





# The Bear Dance

Open floor plan

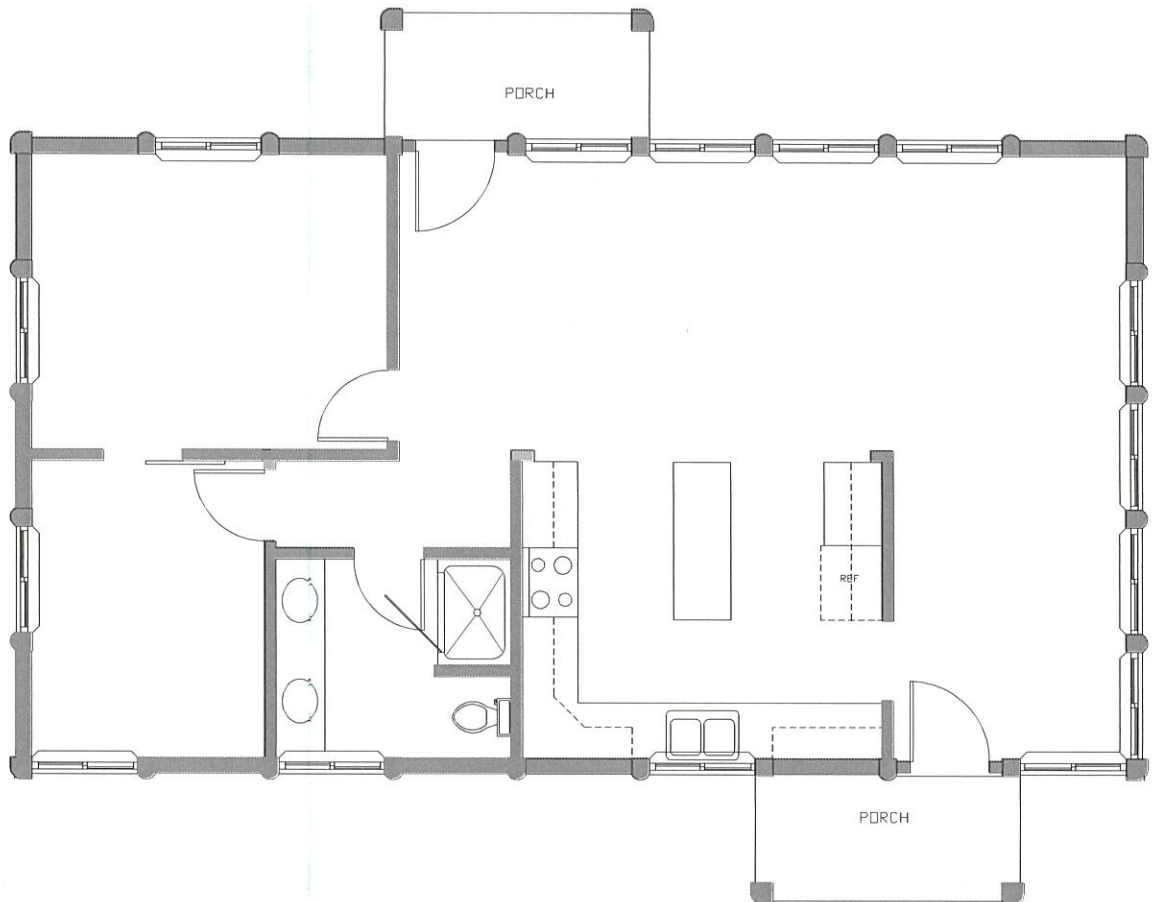
500 sq.ft. storage loft option



featuring "The Woody Log Building Systems"™

**The Bear Dance-CS**  
In the Classic Series  
1024 sq.ft. 24'x42'4"

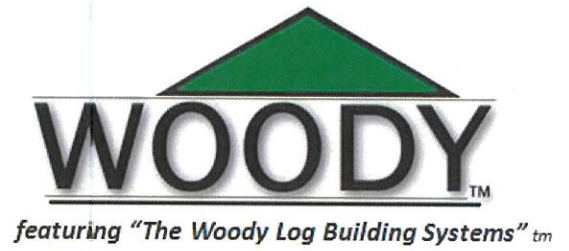
**The Bear Dance style-RC 611**  
In the Rapid Cabin series  
1056 sq.ft. 24'x44'



# The Wolf Lair

300 sq.ft. storage loft option

2 bathrooms



## The Wolf Lair-CS

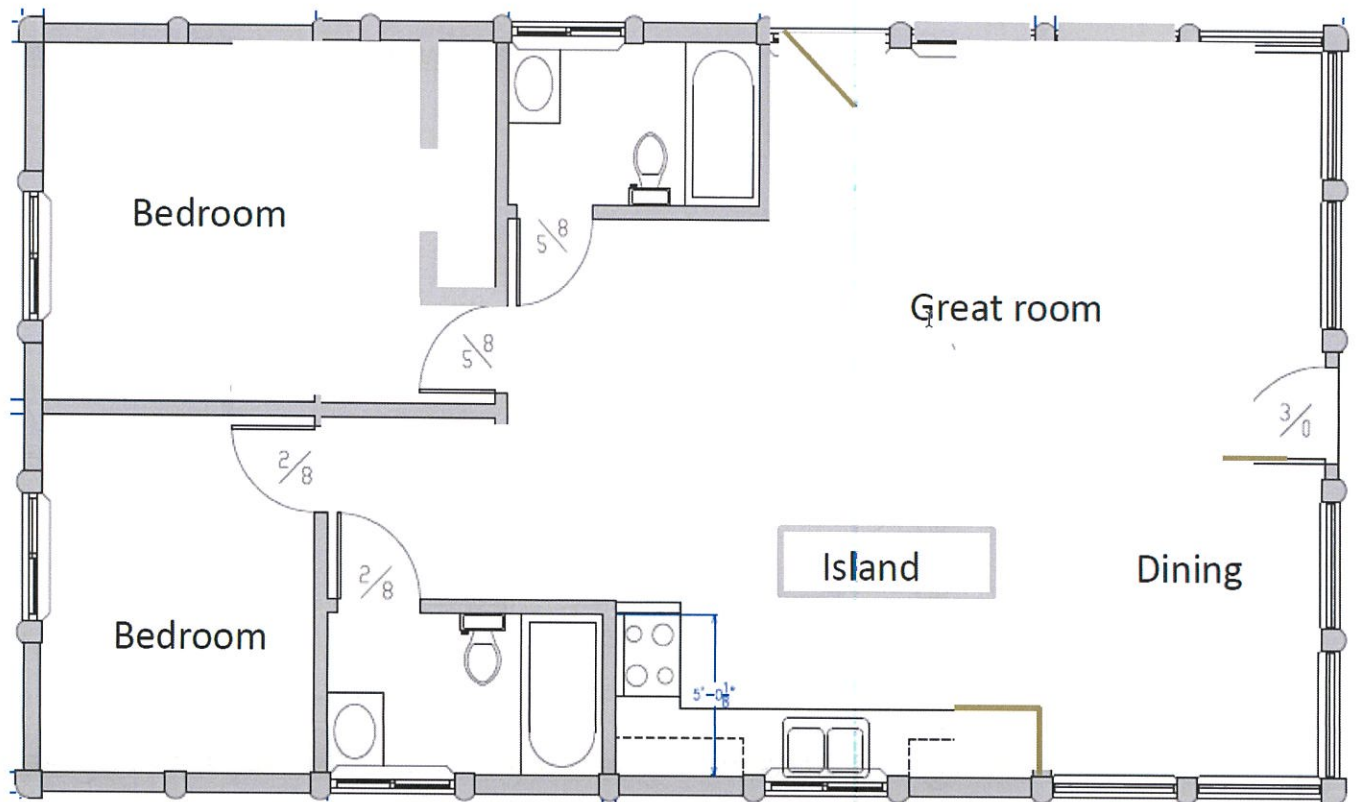
In the Classic Series

1024 sq.ft. 24'x42'4"

## The Wolf Lair style-RC 611

In the Rapid Cabin series

1056 sq.ft. 24'x44'



## *The Bear Den*

300 sq.ft. storage loft option

Screen room

Our most popular series



featuring "The Woody Log Building Systems"™

### **The Bear Den-CS**

In the Classic Series

1024 sq.ft. 24'x42'4"

### **The Bear Den style-RC 611**

In the Rapid Cabin series

1056 sq.ft. 24'x44'

