



Premium (Consumer) LED Solutions







12V LED Lamps

*Product specs are subject to $\pm 10\%$ tolerance.





Certifications

CE by DEKRA FC RoHS compliant



Article Number	E180SMNKA	E180SMNCA	E180SMNAA
Power (W)		3.3	
Total Luminous Flux (lm)	180	190	193
Efficacy (lm/W)	55	58	58
Color Temperature	2700K	4000K	5000K
Beam Angle (°)		105	
CRI		80	
Focus		Flat Lens	
Measurement		45mm x 50mm diameter	
Heatsink		Plastics + Aluminium	
Operating Temperature		0-40 deg Celcius	
Rated lamp life		25,000 hours	

- These lamps require a 10- 60 VA electronic transformer. For enhanced performance and extended lamp life 12V DC LED power supply may be used. Please contact SWISS LED for details.



NOT FOR USE inside enclosed luminaires or in luminaires without air flow.



MR16 280lm

12V

Certifications

CE by DEKRA FC RoHS compliant

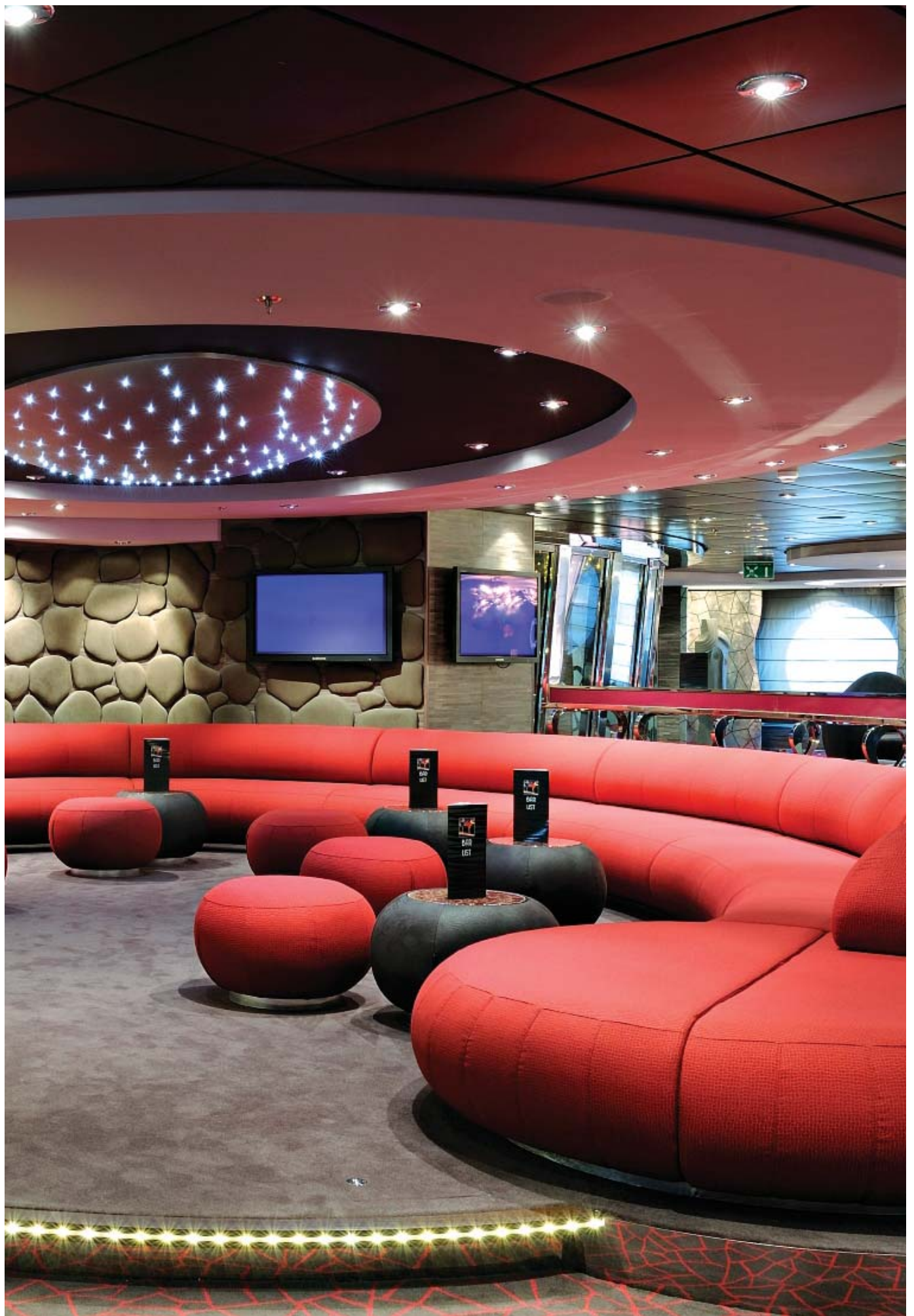


Article Number	E280SMNKA	E280SMNCA	E280SMNAA
Power (W)		4.7	
Total Luminous Flux (lm)	280	294	300
Efficacy (lm/W)	60	63	64
Color Temperature	2700K	4000K	5000K
Beam Angle (°)		105	
CRI		80	
Focus		Flat Lens	
Measurement		45mm x 50mm diameter	
Heatsink		Plastics + Aluminium	
Operating Temperature		0-40 deg Celcius	
Rated lamp life		25,000 hours	

- These lamps require a 10- 60 VA electronic transformer. For enhanced performance and extended lamp life 12V DC LED power supply may be used. Please contact SWISS LED for details.



NOT FOR USE inside enclosed luminaires or in luminaires without air flow.



MR16 345lm

12V

Certifications

CE by DEKRA FC RoHS compliant

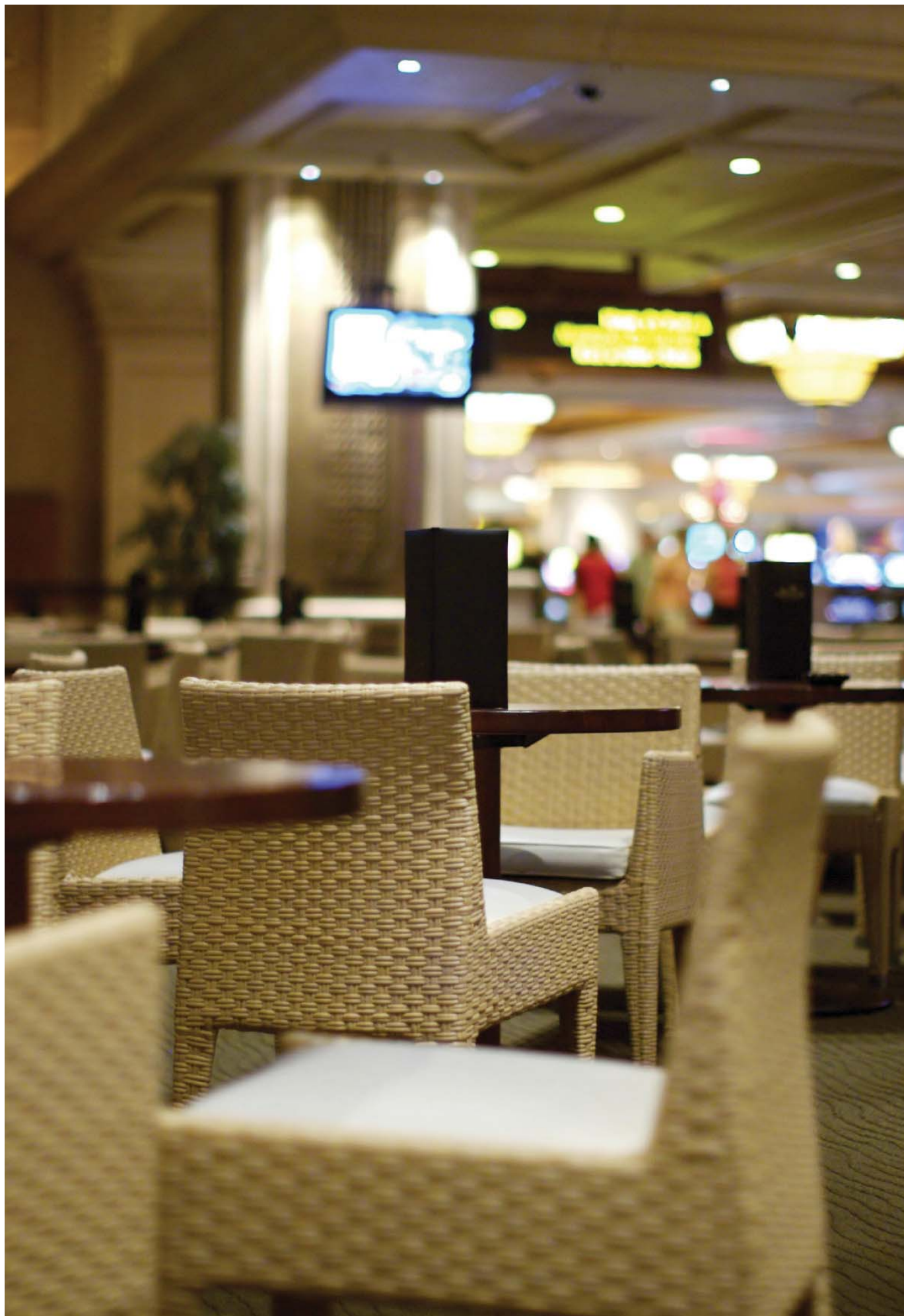


Article Number	E345SMNKA	E345SMNCA	E345SMNAA
Power (W)		6.5	
Total Luminous Flux (lm)	345	360	370
Efficacy (lm/W)	53	55	57
Color Temperature	2700K	4000K	5000K
Beam Angle (°)		36	
CRI		80	
Focus		Optical Lens	
Measurement		48mm x 50mm diameter	
Heatsink		Plastics + Aluminium	
Operating Temperature		0-40 deg Celcius	
Rated lamp life		25,000 hours	

- These lamps require a 10- 60 VA electronic transformer. For enhanced performance and extended lamp life 12V DC LED power supply may be used. Please contact SWISS LED for details.



NOT FOR USE inside enclosed luminaires or in luminaires without air flow.



MR16 500lm

12V

Certifications

CE by DEKRA FC RoHS compliant

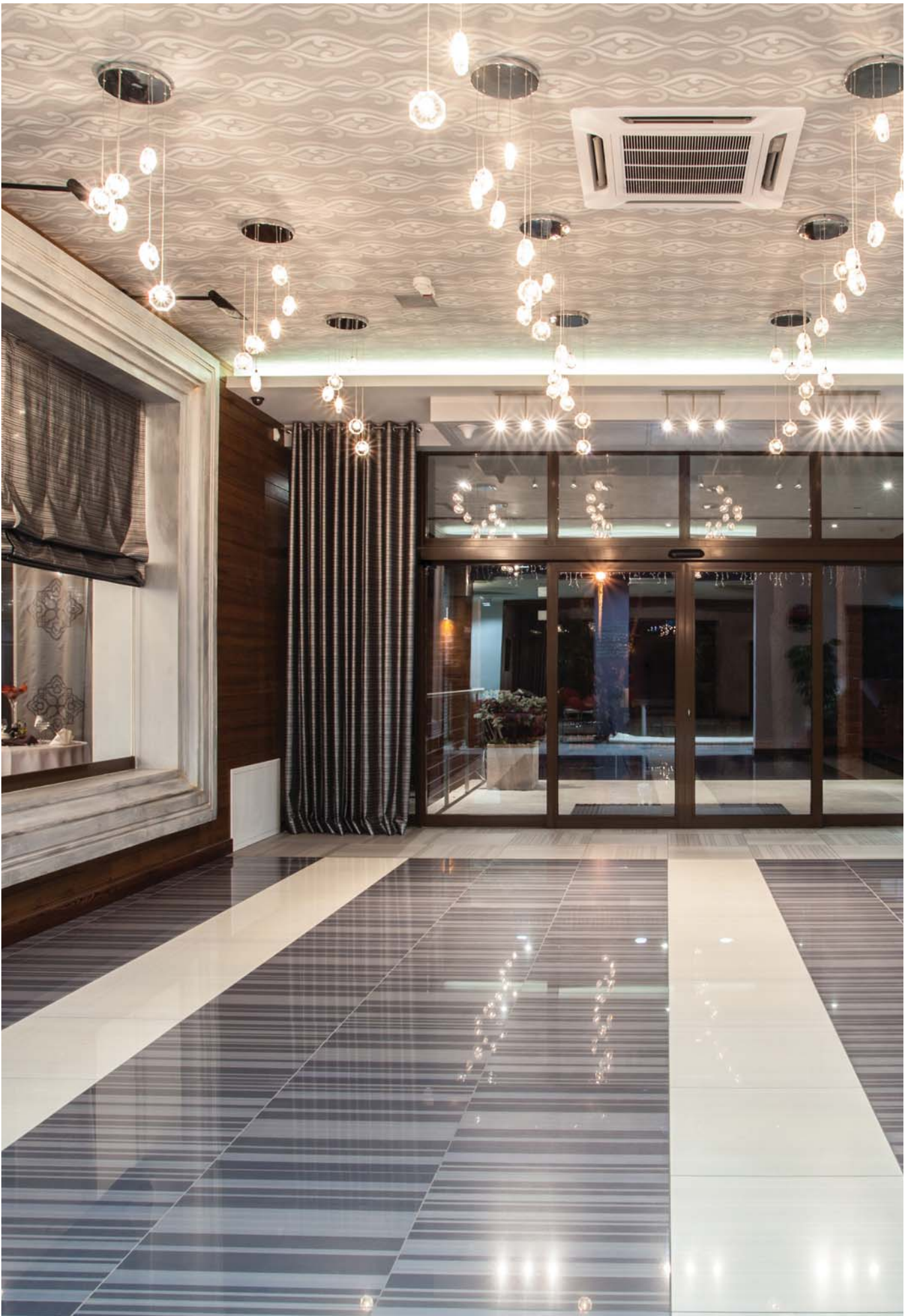


Article Number	E500SMNKA	E500SMNCA	E500SMNAA
Power (W)		6.5	
Total Luminous Flux (lm)	500	525	535
Efficacy (lm/W)	77	81	82
Color Temperature	2700K	4000K	5000K
Beam Angle (°)		105	
CRI		80	
Focus		Flat Lens	
Measurement		45mm x 50mm diameter	
Heatsink		Plastics + Aluminium	
Operating Temperature		0-40 deg Celcius	
Rated lamp life		25,000 hours	

- These lamps require a 10- 60 VA electronic transformer. For enhanced performance and extended lamp life 12V DC LED power supply may be used. Please contact SWISS LED for details.

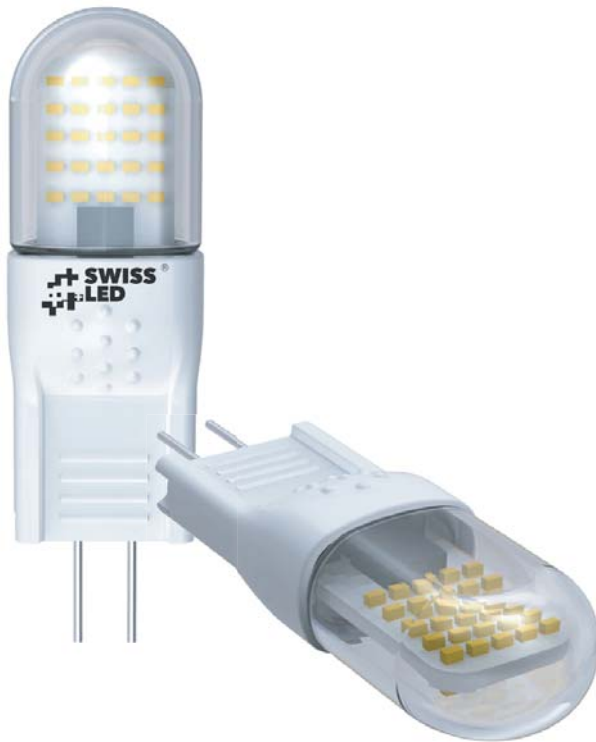


NOT FOR USE inside enclosed luminaires or in luminaires without air flow.



G4 200lm

12V



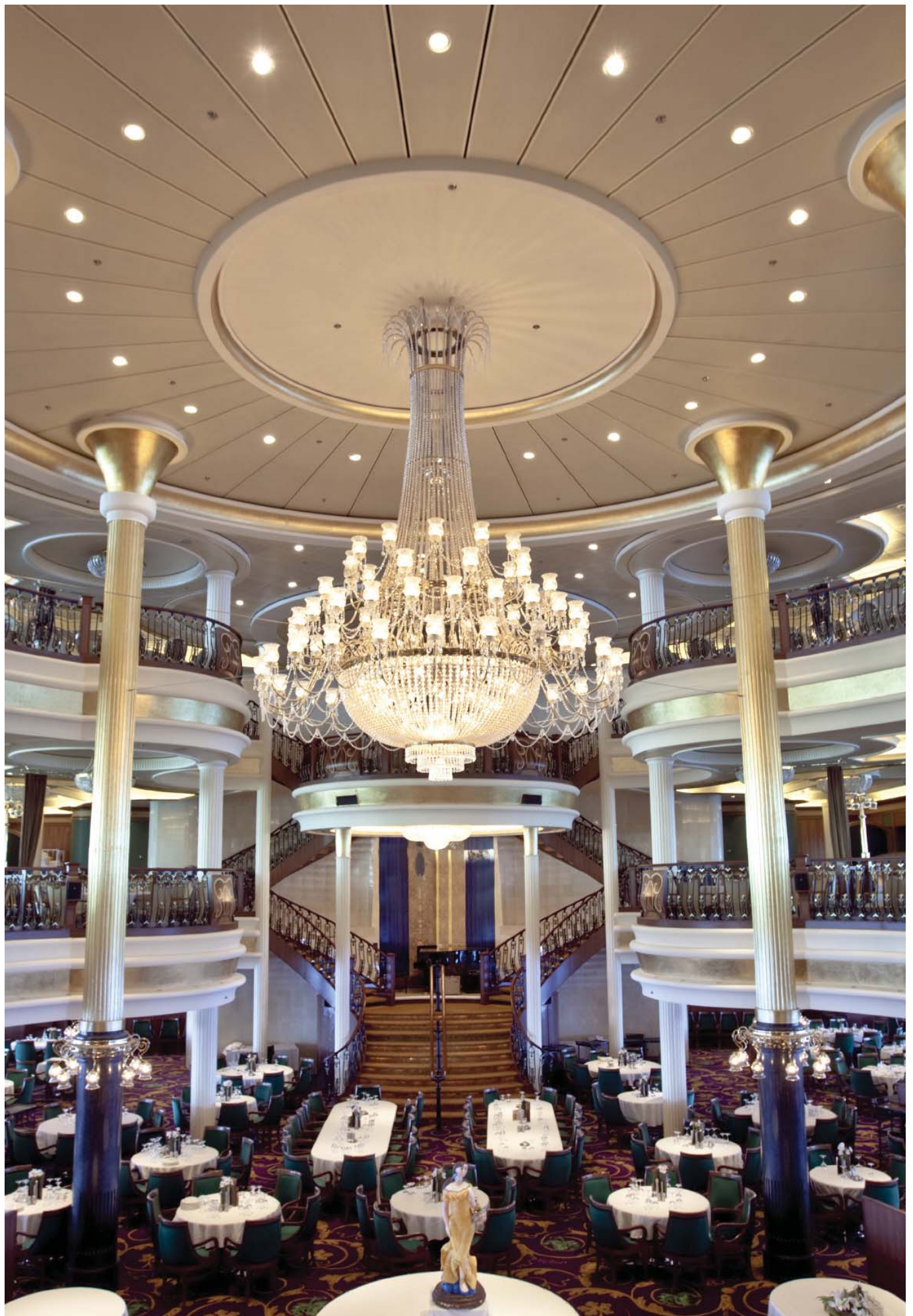
Certifications
FC **RoHS**
compliant



Article Number	E200CPNKA	E200CPNCA	E200CPNAA
Power (W)		2.2	
Total Luminous Flux (lm)	200	220	224
Efficacy (lm/W)	91	100	102
Color Temperature	2700K	4000K	5000K
Beam Angle (°)		300	
CRI		>80	
Focus		Optical Lens	
Measurement		47mm x 14.4mm diameter	
Heatsink		Ceramic	
Operating Temperature		0-40 deg Celcius	
Rated lamp life		25,000 hours	



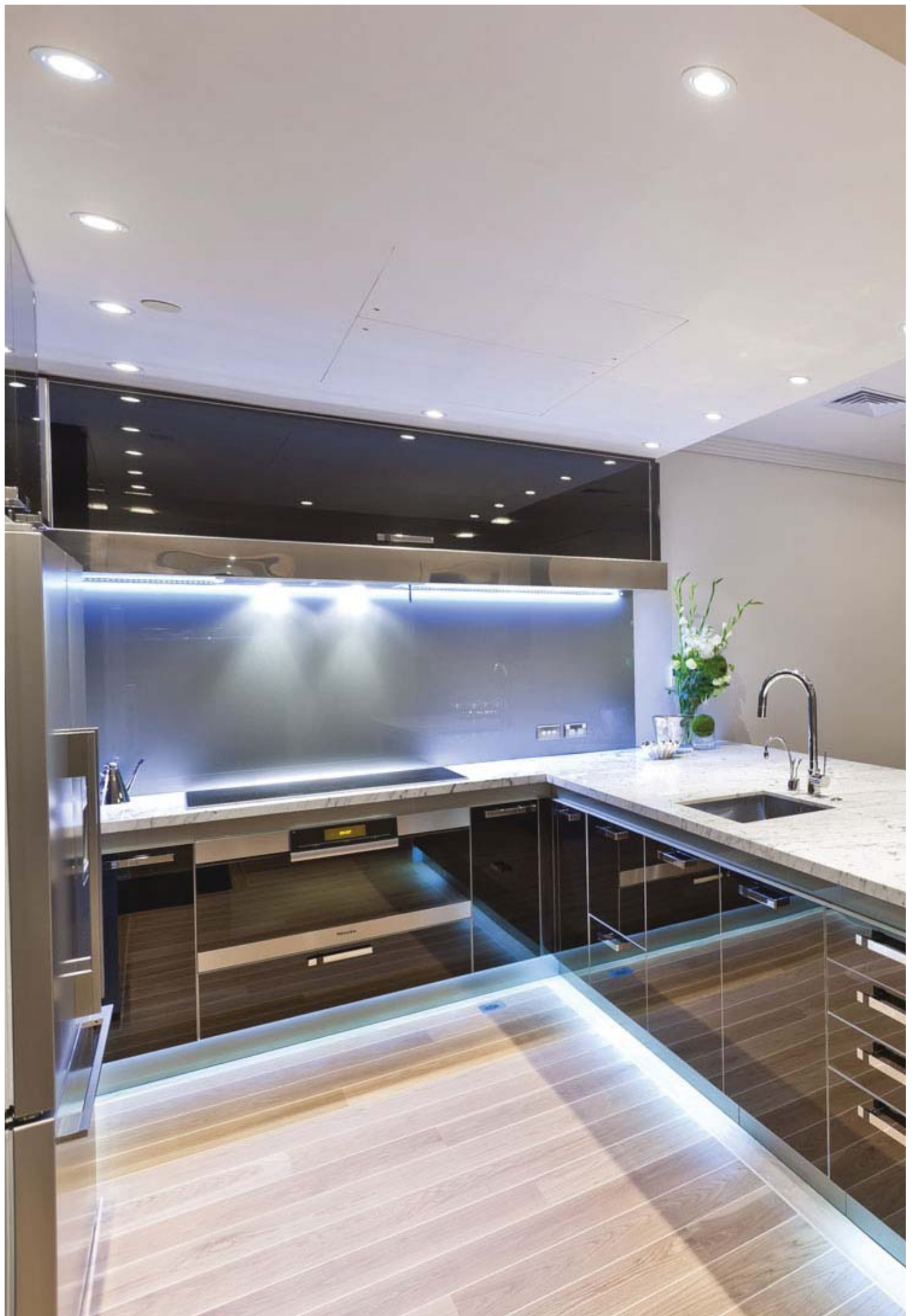
NOT FOR USE inside enclosed luminaires or in luminaires without air flow.





220-240V LED Lamps

*Product specs are subject to $\pm 10\%$ tolerance.



MR16 GU10 180lm

230V

Certifications

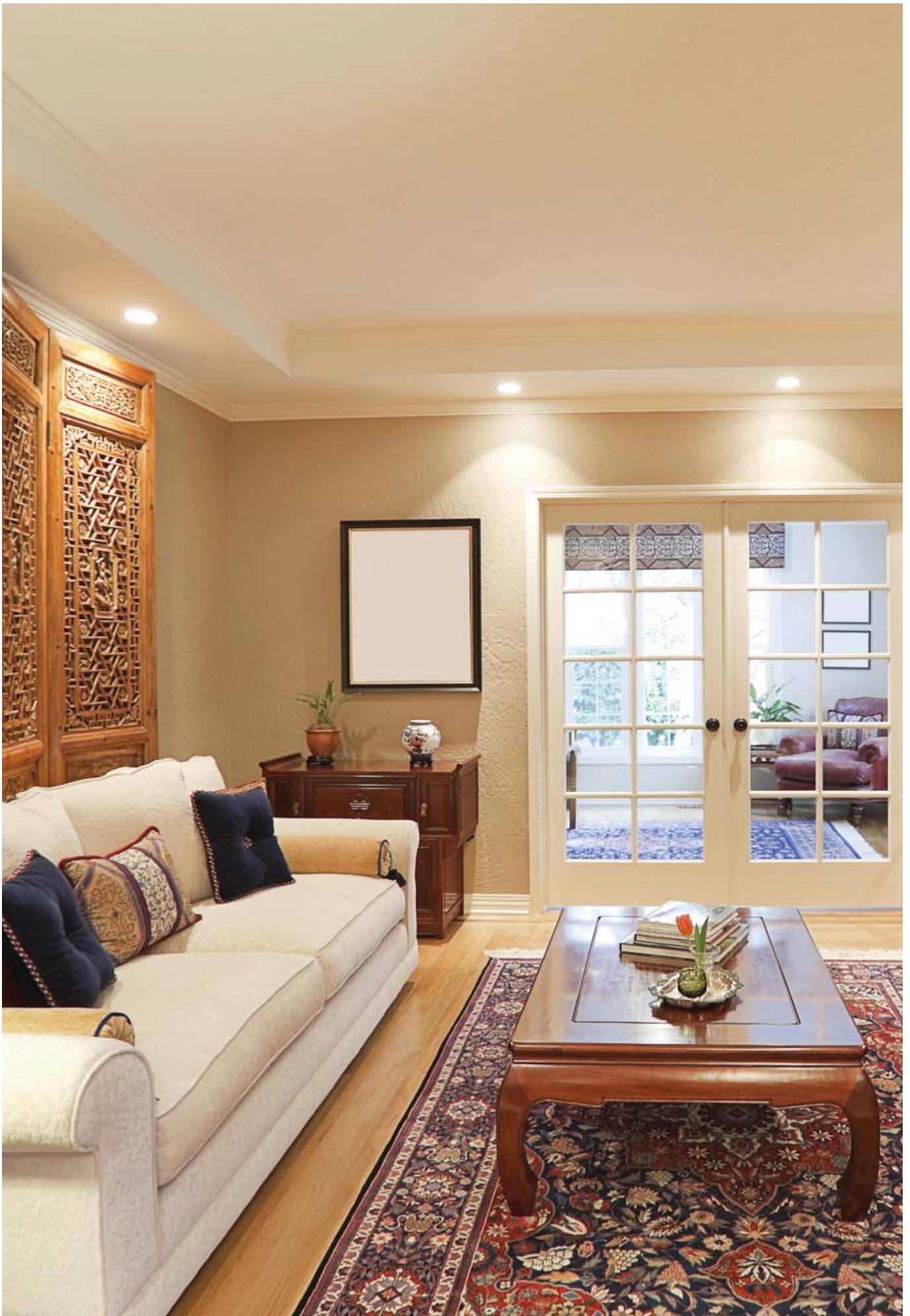
CE by DEKRA FC RoHS compliant



Article Number	E180SGNKA	E180SGNCA	E180SGNAA
Power (W)		3.5	
Total Luminous Flux (lm)	180	190	193
Efficacy (lm/W)	51	54	55
Color Temperature	2700K	4000K	5000K
CRI		80	
Beam Angle		105	
Focus		Flat Lens	
Measurement		54mm x 50mm diameter	
Heatsink		Plastics	
Operating Temperature		0-40 deg Celcius	
Rated lamp life		25,000 hours	



NOT FOR USE inside enclosed luminaires or in luminaires without air flow.



MR16 GU10 280lm

230V

Certifications

CE by DEKRA FC RoHS compliant



Article Number	E280SGNKA	E280SGNCA	E280SGNAA
Power (W)		4.7	
Total Luminous Flux (lm)	280	294	300
Efficacy (lm/W)	60	63	64
Color Temperature	2700K	4000K	5000K
CRI		80	
Beam Angle		105	
Focus		Flat Lens	
Measurement		54mm x 50mm diameter	
Heatsink		Plastics	
Operating Temperature		0-40 deg Celcius	
Rated lamp life		25,000 hours	



NOT FOR USE inside enclosed luminaires or in luminaires without air flow.



MR16 GU10 345lm

230V

Certifications

CE by DEKRA FC RoHS compliant



Article Number	E345SGNKA	E345SGNCA	E345SGNAA
Power (W)		6.5	
Total Luminous Flux (lm)	345	360	370
Efficacy (lm/W)	53	55	57
Color Temperature	2700K	4000K	5000K
CRI		80	
Beam Angle		36	
Focus		Optical Lens	
Measurement		56mm x 50mm diameter	
Heatsink		Plastics	
Operating Temperature		0-40 deg Celcius	
Rated lamp life		25,000 hours	



NOT FOR USE inside enclosed luminaires or in luminaires without air flow.



MR16 GU10 345lm Dimmable**

230V

Certifications

CE by DEKRA FC RoHS compliant



Article Number	E345SGDKA	E345SGDCA	E345SGDAA
Power (W)		6.8	
Total Luminous Flux (lm)	345	360	370
Efficacy (lm/W)	51	53	54
Color Temperature	2700K	4000K	5000K
CRI		80	
Beam Angle		36	
Focus		Optical Lens	
Measurement		56mm x 50mm diameter	
Heatsink		Plastics	
Operating Temperature		0-40 deg Celcius	
Rated lamp life		25,000 hours	

** Dimmable on recommended dimmers. Please contact SWISS LED for details.



NOT FOR USE inside enclosed luminaires or in luminaires without air flow.



MR16 GU10 500lm

230V



Certifications

CE by DEKRA FC RoHS compliant



Article Number	E500SGNKA	E500SGNCA	E500SGNAA
Power (W)		6.5	
Total Luminous Flux (lm)	500	525	535
Efficacy (lm/W)	77	81	82
Color Temperature	2700K	4000K	5000K
CRI		80	
Beam Angle		105	
Focus		Flat Lens	
Measurement		54mm x 50mm diameter	
Heatsink		Plastics	
Operating Temperature		0-40 deg Celcius	
Rated lamp life		25,000 hours	



NOT FOR USE inside enclosed luminaires or in luminaires without air flow.



PAR20 345lm

230V

Certifications

CE by DEKRA FC RoHS compliant



Article Number	E4100ENKA	E4100ENCA	E4100ENAA
Power (W)		8	
Total Luminous Flux (lm)	345	410	410
Efficacy (lm/W)	43	51	51
Color Temperature	2700K	4000K	5000K
CRI		80, >90 ¹	
Beam Angle		36	
Focus		Optical Lens	
Measurement		98mm x 63mm diameter	
Heatsink		Aluminium	
Operating Temperature		0-40 deg Celcius	
Rated lamp life		25,000 hours	

¹ Optional

** Compatible with most commonly used Trailing Edge and Leading Edge dimmers. Please contact SWISS LED for details.



NOT FOR USE inside enclosed luminaires or in luminaires without air flow.



Certifications

CE by DEKRA FC RoHS compliant



Article Number	E720QENKA	E720QENCA	E720QENAA
Power (W)		12.5	
Total Luminous Flux (lm)	650	720	720
Efficacy (lm/W)	52	58	58
Color Temperature	2700K	4000K	5000K
CRI		80, >90 ¹	
Beam Angle		36	
Focus		Optical Lens	
Measurement		130mm x 95.5mm diameter	
Heatsink		Aluminium	
Operating Temperature		0-40 deg Celcius	
Rated lamp life		25,000 hours	

¹ Optional

** Compatible with most commonly used Trailing Edge and Leading Edge dimmers. Please contact SWISS LED for details.



NOT FOR USE inside enclosed luminaires or in luminaires without air flow.



PAR38 1170lm

230V

Certifications

CE by DEKRA FC RoHS compliant



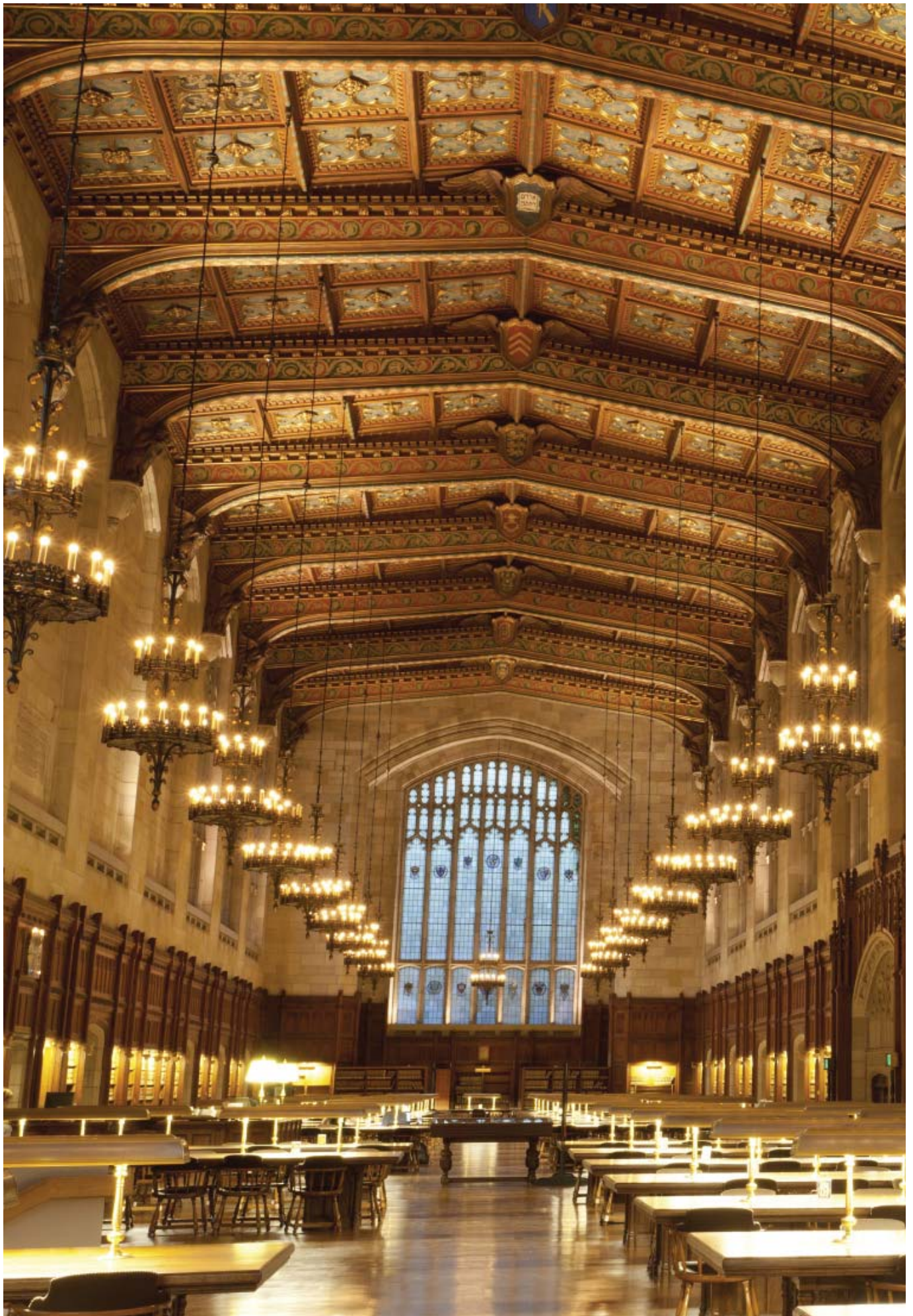
Article Number	EB70RENKA	EB70RENCA	EB70RENAA
Power (W)		17	
Total Luminous Flux (lm)	1170	1230	1250
Efficacy (lm/W)	69	72	74
Color Temperature	2700K	4000K	5000K
CRI		80, >90 ¹	
Beam Angle		36	
Focus		Optical Lens	
Measurement		133mm x 122mm diameter	
Heatsink		Aluminium	
Operating Temperature		0-40 deg Celcius	
Rated lamp life		25,000 hours	

¹ Optional

** Compatible with most commonly used Trailing Edge and Leading Edge dimmers. Please contact SWISS LED for details.



NOT FOR USE inside enclosed luminaires or in luminaires without air flow.



Candlelight 250lm

230V

Certifications

CE by DEKRA FC RoHS compliant



Article Number	E250FVNKA	E250FVNCA	E250FVNAA
Power (W)		4	
Total Luminous Flux (lm)	250	263	268
Efficacy (lm/W)	63	66	67
Color Temperature	2700K	4000K	5000K
CRI		80	
Beam Angle		>180	
Focus		Glass Globe	
Measurement		106mm x 38mm diameter	
Heatsink		Plastics & Aluminium	
Operating Temperature		0-40 deg Celcius	
Rated lamp life		25,000 hours	



NOT FOR USE inside enclosed luminaires or in luminaires without air flow.



Candlelight 323lm

230V

Certifications

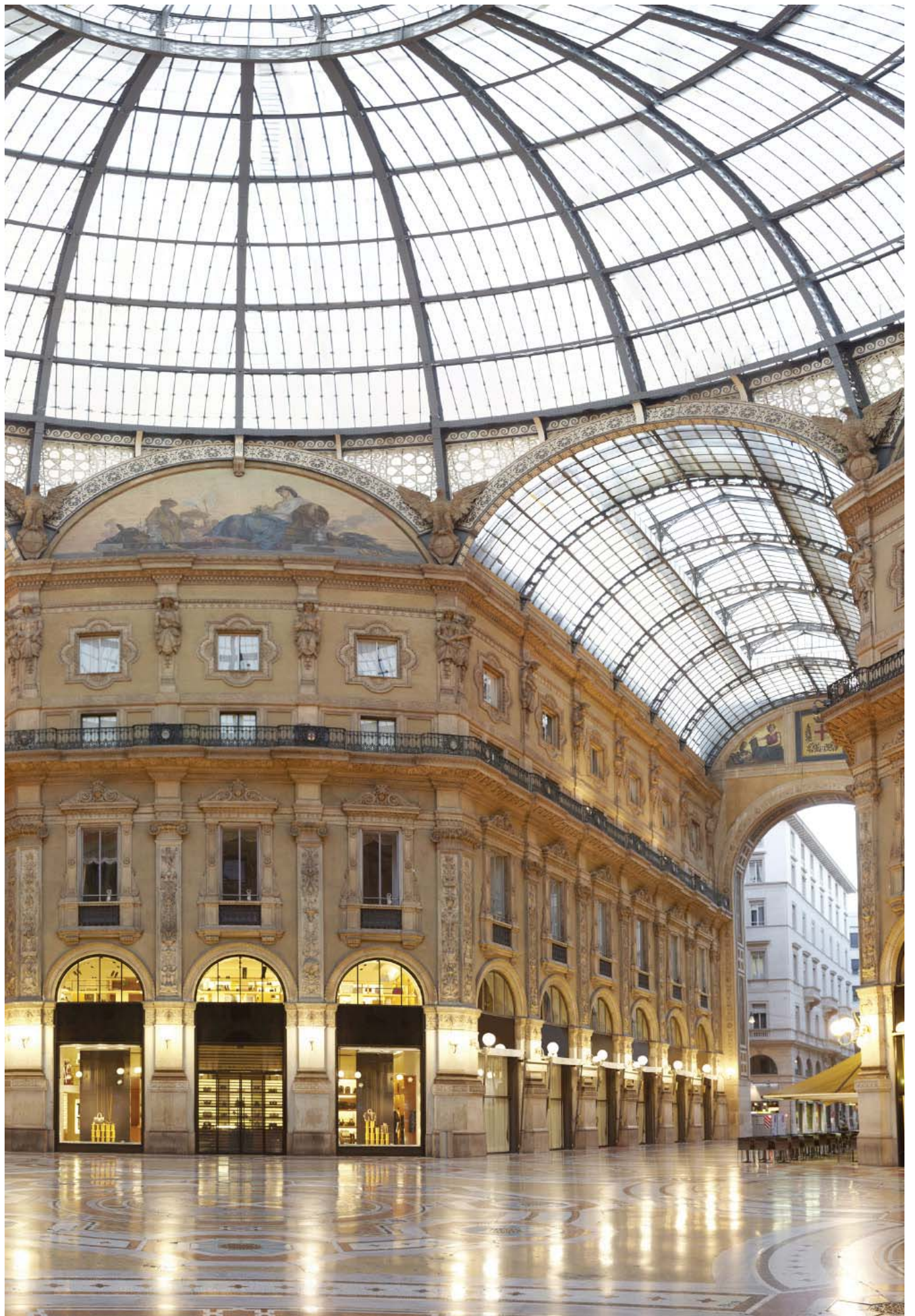
CE by DEKRA FC RoHS compliant



Article Number	E323FVNKA	E323FVNCA	E323FVNAA
Power (W)		4.2	
Total Luminous Flux (lm)	323	340	345
Efficacy (lm/W)	77	81	82
Color Temperature	2700K	4000K	5000K
CRI		80	
Beam Angle		>180	
Focus		Glass Globe	
Measurement		106mm x 38mm diameter	
Heatsink		Plastics & Aluminium	
Operating Temperature		0-40 deg Celcius	
Rated lamp life		25,000 hours	



NOT FOR USE inside enclosed luminaires or in luminaires without air flow.



Certifications

CE by DEKRA FC RoHS compliant



Article Number	E470FVNKA	E470FVNCA	E470FVNAA
Power (W)		5.6	
Total Luminous Flux (lm)	500	525	535
Efficacy (lm/W)	89	94	96
Color Temperature	2700K	4000K	5000K
CRI		80	
Beam Angle		200	
Focus		Glass Globe	
Measurement		106mm x 38mm diameter	
Heatsink		Plastics & Aluminium	
Operating Temperature		0-40 deg Celcius	
Rated lamp life		25,000 hours	



NOT FOR USE inside enclosed luminaires or in luminaires without air flow.



Candlelight 470lm Dimmable**

230V

Certifications

CE by DEKRA FC RoHS compliant



Article Number	E470FVDKA	E470FVDCA	E470FVDAA
Power (W)		6.5	
Total Luminous Flux (lm)	470	490	500
Efficacy (lm/W)	72	75	77
Color Temperature	2700K	4000K	5000K
CRI		80	
Beam Angle		200	
Focus		Glass Globe	
Measurement		105mm x 37mm diameter	
Heatsink		Plastics & Aluminium	
Operating Temperature		0-40 deg Celcius	
Rated lamp life		25,000 hours	

**Dimmable on recommended dimmers. Please contact SWISS LED for details.



NOT FOR USE inside enclosed luminaires or in luminaires without air flow.



Bulb 470lm

230V

Certifications

CE by DEKRA FC RoHS compliant



Article Number	E470GENKA	E470GENCA	E470GENAA
Power (W)		6	
Total Luminous Flux (lm)	470	550	550
Efficacy (lm/W)	78	92	92
Color Temperature	2700K	4000K	5000K
CRI		80	
Beam Angle		200	
Focus		Glass Globe	
Measurement		110mm x 60mm diameter	
Heatsink		Plastics & Aluminium	
Operating Temperature		0-40 deg Celcius	
Rated lamp life		25,000 hours	



NOT FOR USE inside enclosed luminaires or in luminaires without air flow.





Certifications

CE by DEKRA FC RoHS compliant



Article Number	E806GENKA	E806GENCA	E806GENAA
Power (W)		9	
Total Luminous Flux (lm)	806	920	880
Efficacy (lm/W)	90	102	98
Color Temperature	2700K	4000K	5000K
CRI		80	
Beam Angle		200	
Focus		Glass Globe	
Measurement		111mm x 60mm diameter	
Heatsink		Plastics & Aluminium	
Operating Temperature		0-40 deg Celcius	
Rated lamp life		25,000 hours	



NOT FOR USE inside enclosed luminaires or in luminaires without air flow.



Bulb 806lm Dimmable

230V

Certifications

CE by DEKRA FC RoHS compliant

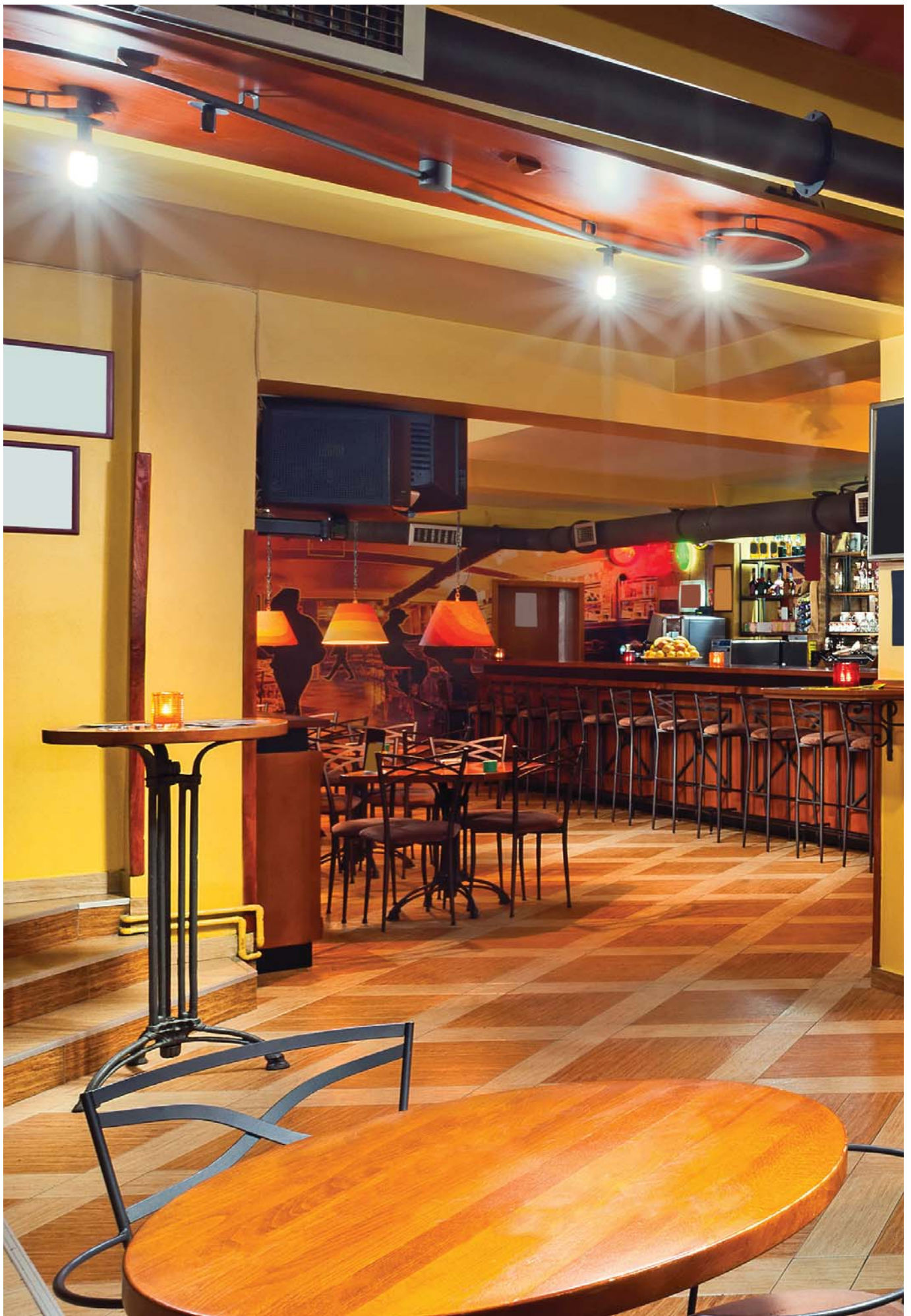


Article Number	E806GEDKA	E806GEDCA	E806GEDAA
Power (W)		10.5	
Total Luminous Flux (lm)	806	845	860
Efficacy (lm/W)	77	80	82
Color Temperature	2700K	4000K	5000K
CRI		80	
Beam Angle		200	
Focus		Glass Globe	
Measurement		110mm x 60mm diameter	
Heatsink		Plastics & Aluminium	
Operating Temperature		0-40 deg Celcius	
Rated lamp life		25,000 hours	

**Dimmable on recommended dimmers. Please contact SWISS LED for details.



NOT FOR USE inside enclosed luminaires or in luminaires without air flow.



G95 1055lm

230V

Certifications

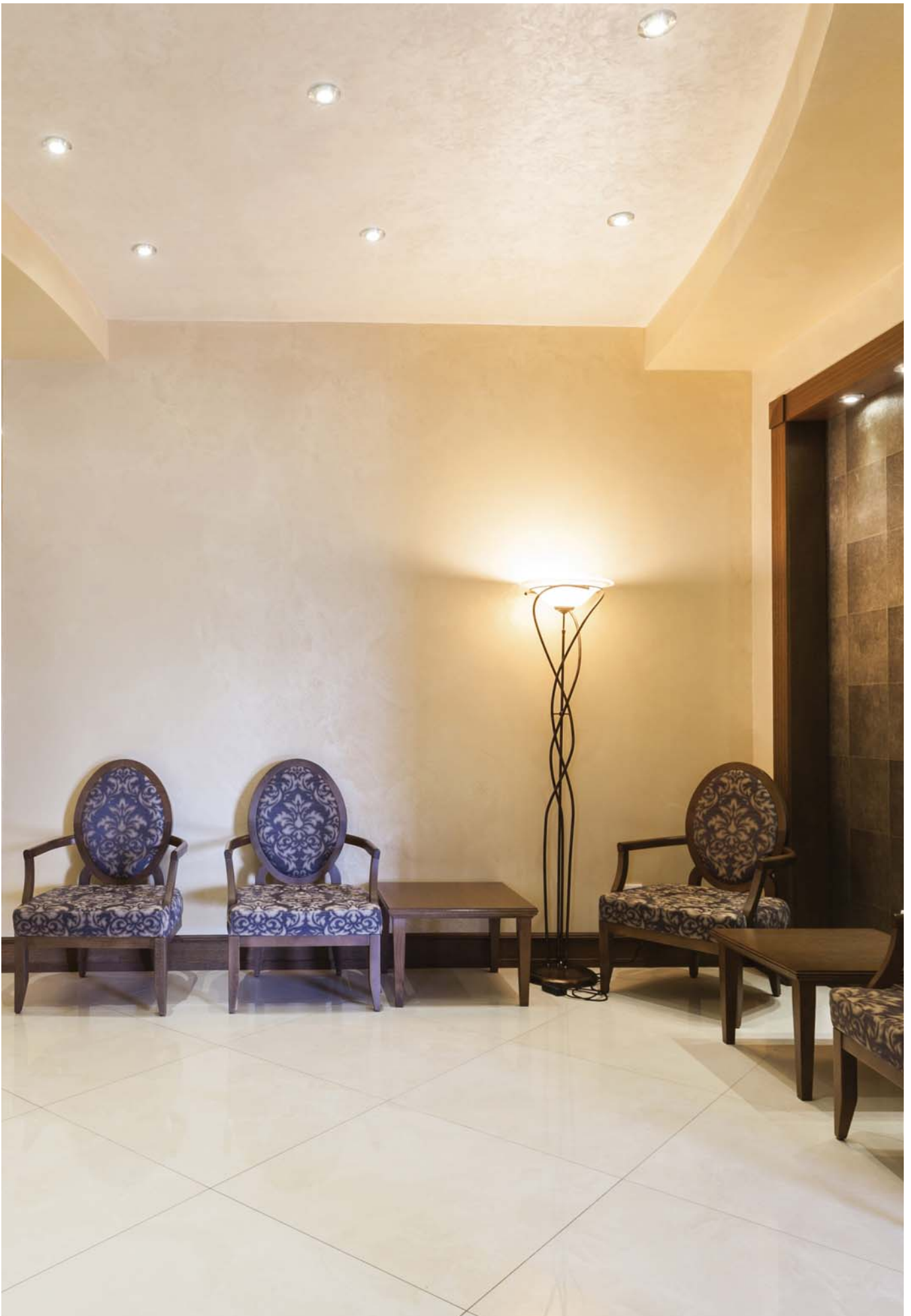
CE by DEKRA FC RoHS compliant



Article Number	EA55BENKA	EA55BENCA	EA55BENAA
Power (W)		12.5	
Total Luminous Flux (lm)	1055	1100	1150
Efficacy (lm/W)	84	88	92
Color Temperature	2700K	4000K	5000K
CRI		80	
Beam Angle		180	
Focus		Glass Globe	
Measurement		134mm x 95mm diameter	
Heatsink		Plastics & Aluminium	
Operating Temperature		0-40 deg Celcius	
Rated lamp life		25,000 hours	



NOT FOR USE inside enclosed luminaires or in luminaires without air flow.



G95 1521lm

230V

Certifications

CE by DEKRA FC RoHS compliant



Article Number	EF21BENKA	EF21BENCA	EF21BENAA
Power (W)		16.5	
Total Luminous Flux (lm)	1521	1600	1580
Efficacy (lm/W)	92	97	96
Color Temperature	2700K	4000K	5000K
CRI		80	
Beam Angle		180	
Focus		Glass Globe	
Measurement		134mm x 95mm diameter	
Heatsink		Plastics & Aluminium	
Operating Temperature		0-40 deg Celcius	
Rated lamp life		25,000 hours	

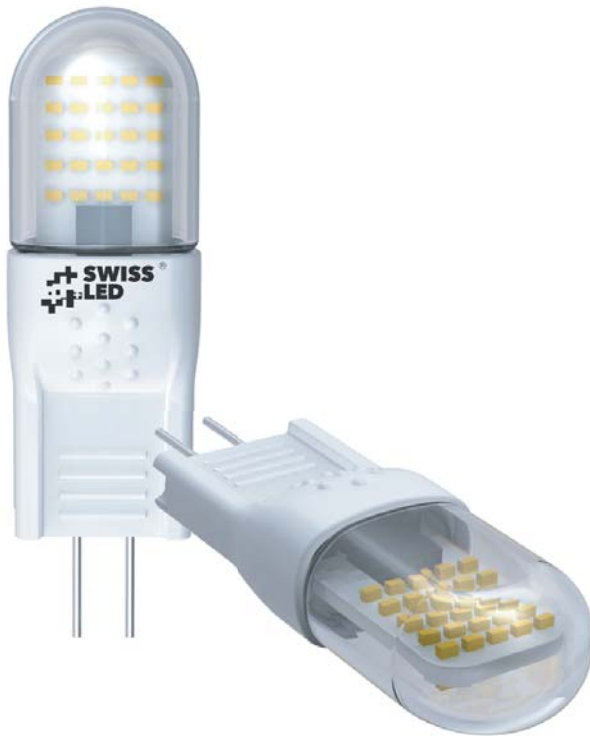


NOT FOR USE inside enclosed luminaires or in luminaires without air flow.



G9 200lm

230V



Certifications



Article Number	E200DQNK A	E200DQNC A	E200DQNA A
Power (W)		2.6	
Total Luminous Flux (lm)	200	210	215
Efficacy (lm/W)	77	81	83
Color Temperature	2700K	4000K	5000K
CRI		80	
Beam Angle		300	
Focus		Optical Lens	
Measurement		46mm x 14.5mm diameter	
Heatsink		Ceramic	
Operating Temperature		0-40 deg Celcius	
Rated lamp life		25,000 hours	



NOT FOR USE inside enclosed luminaires or in luminaires without air flow.



SWITZERLAND HQ

Located In Chavannes de Bogis

Chemin des chalets 7, 1279 Chavannes de Bogis

Phone: +41 225 105 622

UAE OFFICE

Located In JLT, Dubai

Jumeirah Lake Towers, Jumeirah Business Center 3,
Office 2004

Phone: +971 455 862 95

SOUTH AFRICAN OFFICE

Located In Johannesburg

Unit 2B, Northlands Deco Park, New Market Road,
North Riding, Gauteng South Africa 2162

Phone: +27 (0)11 3670 678

USA OFFICE

Located In Los Angeles

15233 Ventura Boulevard, Suite 740
Sherman Oaks CA 91403

Phone: +1 (818) 788-0330

BENELUX

Located In Netherlands

Oude Middenweg 231C
2491 AG Den Haag

Phone: +31 (0) 70 2500535

CHINESE OFFICE

Located In Shanghai

20A, Tower 3, Lane 600, Tianshan Rd, 200051
Shanghai

Phone: +86 2162749008

TURKISH OFFICE

Located In Alsancak

1372. Sokak No: 16/101, Alsancak – Izmir 35210,
Turkey

Phone: +90 232 483 8440

Fax: +90 232 483 8450

MEXICAN OFFICE

Located In Mexico City D.F

Farallon 210, Jardines del Pedregal, Alvaro Obregon
01900, Mexico D.f

Phone: +52 5563502978

www.swiss-led.com
info@Swiss-LED.com