



CHAOS COUTURE

PHASE 2

EMILIA P., BRIANNA B., BROOK B., & EMMA M.

Line/Range Plan

| CATEGORY | | Dresses | Skirts | Shorts | Tops | Bras | Underwear | Leotard/Bodysuit | Rompers/Jumpsuits | Corset | TOTAL |
|-------------|-------|-----------------|---------------|---------------|--------------|--------------|--------------|------------------|-------------------|-----------------|-------|
| PRICE RANGE | | \$250 - \$3,000 | \$100 - \$500 | \$100 - \$500 | \$50 - \$250 | \$50 - \$250 | \$50 - \$250 | \$250 - \$3,000 | \$250 - \$3,000 | \$250 - \$3,000 | |
| LINE 1 | STYLE | 3 | 2 | 1 | 3 | 0 | 0 | 3 | 1 | 0 | 13 |
| | COLOR | 5 | 4 | 2 | 6 | 0 | 0 | 7 | 3 | 0 | 27 |
| LINE 2 | STYLE | 3 | 3 | 0 | 3 | 0 | 1 | 1 | 1 | 1 | 13 |
| | COLOR | 6 | 6 | 0 | 5 | 0 | 3 | 3 | 2 | 3 | 28 |
| LINE 3 | STYLE | 4 | 1 | 2 | 3 | 0 | 0 | 0 | 3 | 0 | 13 |
| | COLOR | 8 | 3 | 5 | 6 | 0 | 0 | 0 | 5 | 0 | 27 |
| LINE 4 | STYLE | 0 | 1 | 3 | 2 | 2 | 1 | 3 | 0 | 1 | 13 |
| | COLOR | 0 | 2 | 4 | 6 | 2 | 3 | 9 | 0 | 2 | 28 |
| TOTAL | STYLE | 10 | 7 | 6 | 11 | 2 | 2 | 7 | 5 | 2 | 52 |
| | COLOR | 19 | 15 | 11 | 23 | 2 | 6 | 19 | 10 | 5 | 110 |

| | Line 1 | Line 2 | Line 3 | Line 4 |
|---------------|---------|---------|---------|--------|
| Basic items | 0.0% | 14.0% | 0% | 29.0% |
| Key items | 50.0% | 29.0% | 60% | 14.0% |
| Fashion Items | 50.0% | 57.0% | 40% | 57.0% |
| Total | 100.00% | 100.00% | 100.00% | |

ASSORTMENT PLAN

ASSORTMENT PLAN

| Category | Total | | Size | | Fashion Level | Line 1: Fall | | Description |
|--------------------|-----------|-------------|------------|------------|---------------|--------------|-----------|---|
| | Style | Color (SKU) | Size Range | Size Scale | | Style | Color | |
| Dresses | 10 | 20 | 2-4-6-8-10 | 1-3-4-3-1 | Fashion | 3 | 6 | Full length feathers/ one-shoulder mesh/strapless |
| Skirts | 7 | 13 | 2-4-6-8-10 | 1-3-4-3-1 | Key | 1 | 2 | lace-up mini skirt |
| Shorts | 6 | 13 | 2-4-6-8-10 | 1-3-4-3-1 | Key | 1 | 2 | Spandex/ sequin shorts |
| Tops | 11 | 22 | 2-4-6-8-10 | 1-3-4-3-1 | Key | 2 | 5 | fitted crop long sleeve/ bikini top |
| Bras | 2 | 5 | - | - | Key | 1 | 3 | Sequin Bandeau |
| Underwear | 2 | 9 | - | - | Key | 1 | 3 | Sequin highwaisted |
| Leotards/Bodysuits | 7 | 18 | 2-4-6-8-10 | 1-3-4-3-1 | Fashion | 2 | 6 | Embellished/fitted/cutouts |
| Rompers/Jumpsuits | 5 | 10 | 2-4-6-8-10 | 1-3-4-3-1 | Fashion | 1 | 3 | stretch, tight-fitted, embellishments, sequins |
| Corset | 2 | 5 | - | - | - | 0 | 0 | |
| Total | 52 | 113 | | | | 12 | 30 | |

| Category | Total | | Size | | Fashion Level | Line 2: Winter | | Description |
|--------------------|-----------|-------------|------------|------------|---------------|----------------|-----------|--|
| | Style | Color (SKU) | Size Range | Size Scale | | Style | Color | |
| Dresses | 10 | 20 | 2-4-6-8-10 | 1-3-4-3-1 | Fashion | 3 | 6 | velvet /beaded/embellished |
| Skirts | 7 | 13 | 2-4-6-8-10 | 1-3-4-3-1 | Fashion | 3 | 6 | sequin skirt/high waisted |
| Shorts | 6 | 11 | - | - | - | 0 | 0 | |
| Tops | 11 | 22 | 2-4-6-8-10 | 1-3-4-3-1 | Key | 3 | 5 | Fitted/embellished/velvet/long sleeve |
| Bras | 2 | 5 | - | - | - | 0 | 0 | |
| Underwear | 2 | 9 | 2-4-6-8-10 | 1-3-4-3-1 | Basic | 1 | 3 | Thong, Boycut, Cheeky |
| Leotards/Bodysuits | 7 | 18 | 2-4-6-8-10 | 1-3-4-3-1 | Fashion | 1 | 3 | Embellished, Full Body, Mesh, Stretch, sequins |
| Rompers/Jumpsuits | 5 | 10 | 2-4-6-8-10 | 1-3-4-3-1 | Key | 1 | 2 | stretch, tight-fitted, embellishments, sequins |
| Corset | 2 | 5 | 2-4-6-8-10 | 1-3-4-3-1 | Fashion | 1 | 3 | Lace up, Embellished, beaded, Satin |
| Total | 52 | 113 | | | | 13 | 28 | |

| Category | Total | | Size | | Line 3: Spring | | | Description |
|--------------------|-----------|-------------|------------|------------|----------------|-----------|-----------|--|
| | Style | Color (SKU) | Size Range | Size Scale | Fashion Level | Style | Color | |
| Dresses | 10 | 20 | 2-4-6-8-10 | 1-3-4-3-1 | Fashion | 4 | 8 | Slips, embellishments, gatherings, sequins |
| Skirts | 7 | 13 | 2-4-6-8-10 | 1-3-4-3-1 | Key | 1 | 3 | Fringe, mini skirt |
| Shorts | 6 | 11 | 2-4-6-8-10 | 1-3-4-3-1 | Key | 2 | 5 | high-waisted, embellishments |
| Tops | 11 | 22 | 2-4-6-8-10 | 1-3-4-3-1 | Key | 3 | 6 | Fitted, Embellishments, crop |
| Bras | 2 | 5 | - | - | - | 0 | 0 | |
| Underwear | 2 | 9 | - | - | - | 0 | 0 | |
| Leotards/Bodysuits | 7 | 18 | - | - | - | 0 | 0 | |
| Rompers/Jumpsuits | 5 | 10 | 2-4-6-8-10 | 1-3-4-3-1 | Fashion | 3 | 5 | stretch, tight-fitted, embellishments, sequins |
| Corset | 2 | 5 | - | - | - | 0 | 0 | |
| Total | 52 | 113 | | | | 13 | 27 | |

| Category | Total | | Size | | Line 4: Summer | | | Description |
|--------------------|-----------|-------------|------------|------------|----------------|-----------|-----------|---|
| | Style | Color (SKU) | Size Range | Size Scale | Fashion Level | Style | Color | |
| Dresses | 10 | 20 | - | - | - | 0 | 0 | |
| Skirts | 7 | 13 | 2-4-6-8-10 | 1-3-4-3-1 | Fashion | 1 | 2 | Mini , Embellished, Fringe, sequence |
| Shorts | 6 | 11 | 2-4-6-8-10 | 1-3-4-3-1 | Key | 3 | 4 | Mini, Mesh, Embellished |
| Tops | 11 | 22 | 2-4-6-8-10 | 1-3-4-3-1 | Fashion | 2 | 6 | Embellished, fitted, deep cut, crop |
| Bras | 2 | 5 | 2-4-6-8-10 | 1-3-4-3-1 | Basic | 2 | 2 | Push up, unlined |
| Underwear | 2 | 9 | 2-4-6-8-10 | 1-3-4-3-1 | Basic | 1 | 3 | Thong, Boycut, Cheeky |
| Leotards/Bodysuits | 7 | 18 | 2-4-6-8-10 | 1-3-4-3-1 | Fashion | 3 | 9 | Embellished, Full Body, Mesh, Stretch, sequence |
| Rompers/Jumpsuits | 5 | 10 | - | - | - | 0 | 0 | |
| Corset | 2 | 5 | 2-4-6-8-10 | 1-3-4-3-1 | Fashion | 1 | 2 | Lace up, Embellished, beaded, Satin |
| Total | 52 | 113 | | | | 13 | 28 | |

| | Line 1 | Line 2 | Line 3 | Line 4 |
|---------------|----------------|----------------|----------------|----------------|
| Basic items | 0.0% | 14.3% | 0% | 28.6% |
| Key items | 50.0% | 28.6% | 60% | 14.3% |
| Fashion Items | 50.0% | 57.1% | 40% | 57.1% |
| Total | 100.00% | 100.00% | 100.00% | 100.00% |

CHAOS COUTURE

Blue My Mind: B



Night Owl : K

Envy The Adventure: Q



Royal Muse: P

Exotic Soul: Y



Melted: R

Glitter All the Way: G



Pink Mimosa: I

Sexy Coin: S

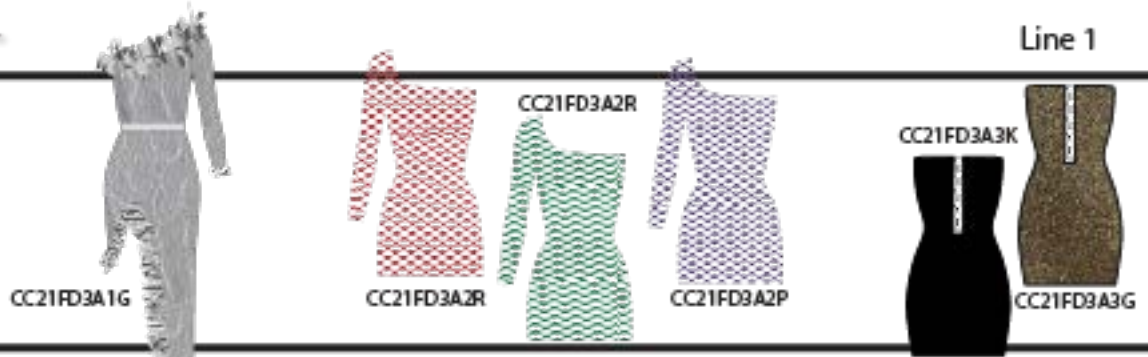


Wolfpack: E



Emerald City: LG

Dresses
2-4-6-8-10



Skirts/Shorts
2-4-6-8-10



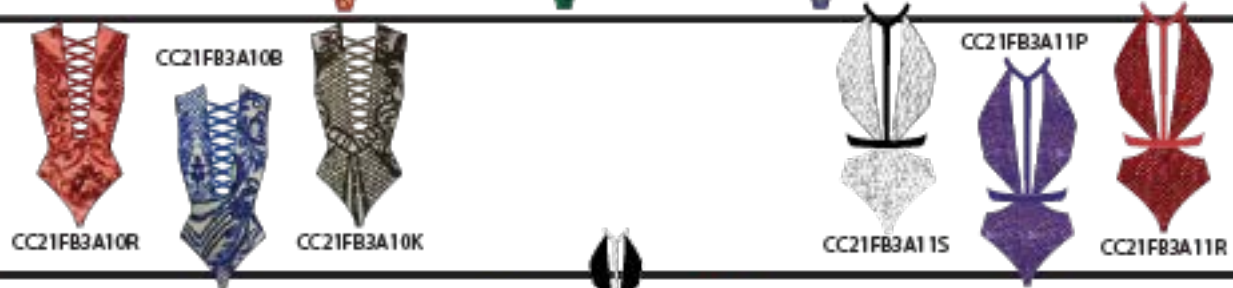
Tops
2-4-6-8-10



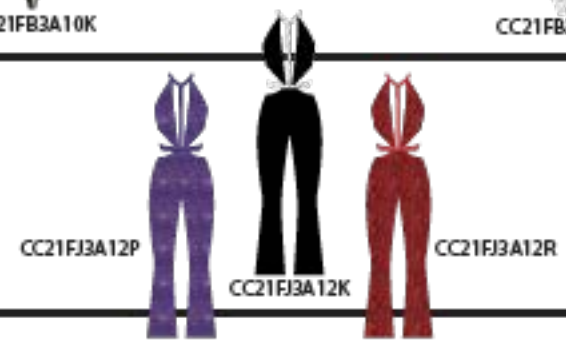
Underwear/Bras
2-4-6-8-10



Leotards/Bodysuits
2-4-6-8-10

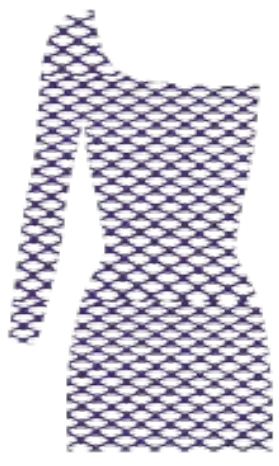


Rompers/Jumpsuits
2-4-6-8-10



Corset
2-4-6-8-10

CHAOS COUTURE



Dresses
2-4-6-8-10

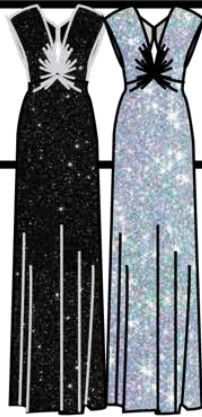
CC21WD3B13G
CC21WD3B13R



CC21WD3B14GQ CC21WD3B14BP



CC21WD3B15K
CC21WD3B15B



Skirts
2-4-6-8-10

CC21WSK3B16KE
CC21WSK3B16R



CC21WSK3B17K CC21WSK3B17S



CC21WSK3B18B CC21WSK3B18P



Tops
2-4-6-8-10

CC21WT2B19RG
CC21WT2B19PK
CC21WT2B19QS



CC21WT2B20K CC21WT2B20G



CC21WT2B21S



Underwear
2-4-6-8-10

CC21WU1B22R
CC21WU1B22B
CC21WU1B22P



Leotards/Bodysuits
2-4-6-8-10

CC21WB3B23BS
CC21WB3B23PG
CC21WB3B23RK



Rompers/Jumpsuits
2-4-6-8-10

CC21WR2B24G
CC21WR2B24P

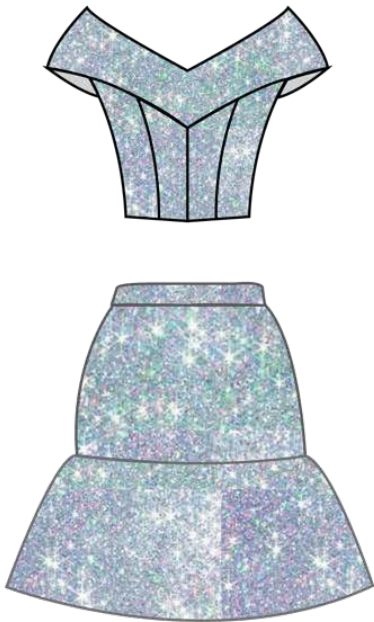
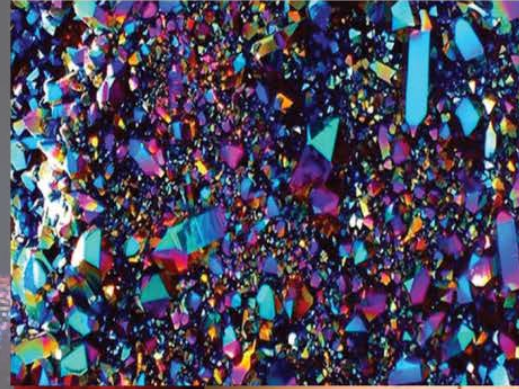


Corset
2-4-6-8-10

CC21WC3B25PK
CC21WC3B25KQ
CC21WC3B25RG



CHAOS COUTURE



Dresses
2-4-6-8-10



SKU #CC21SPD3C27S



SKU #CC21SPD3C27R



SKU #CC21SPD3C28R



SKU #CC21SPD3C28P



SKU #CC21SPD3C29B



SKU #CC21SPD3C29R



SKU #CC21SPD3C30Y



SKU #CC21SPD3C30B

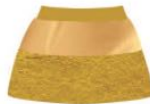
Skirts
2-4-6-8-10



SKU #CC21SPSK3C31B



SKU #CC21SPSK3C31R



SKU #CC21SPSK3C31Y

Shorts
2-4-6-8-10



SKU #CC21SPT2C34S



SKU #CC21SPSH2C32R



SKU #CC21SPSH2C33S



SKU #CC21SPSH2C33B



SKU #CC21SPSH2C33P

Tops
2-4-6-8-10



SKU #CC21SPT2C34S



SKU #CC21SPT2C34R



SKU #CC21SPT2C35P



SKU #CC21SPT2C35R



SKU #CC21SPT2C36S



SKU #CC21SPT2C36P

Leotards/Bodysuits
2-4-6-8-10

Rompers/Jumpsuits
2-4-6-8-10



SKU #CC21SPJ3C37P

SKU #CC21SPJ3C37G



SKU #CC21SPR3C38K

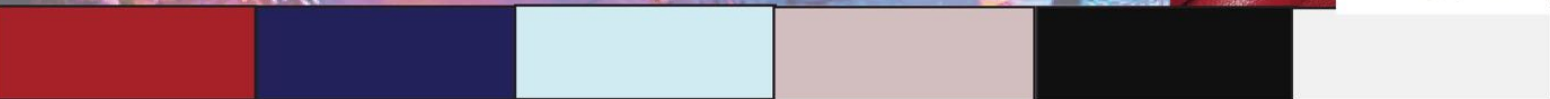
SKU #CC21SPJ3C39R



SKU #CC21SPJ3C39S

Corset
2-4-6-8-10

CHAOS COUTURE



Dresses
2-4-6-8-10

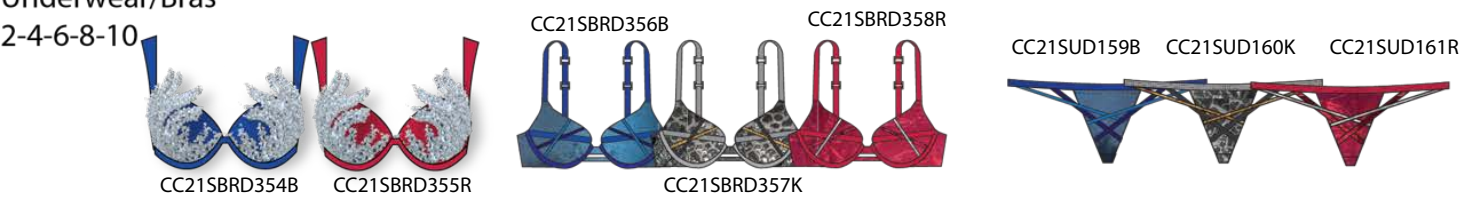
Skirts/Shorts
2-4-6-8-10



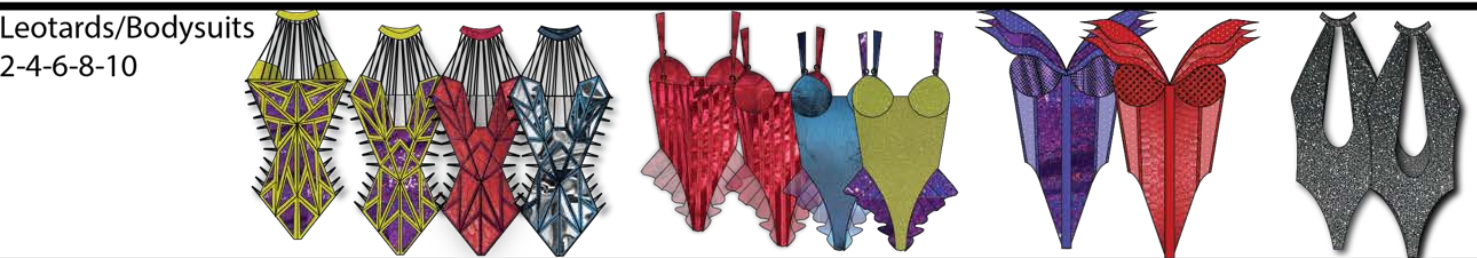
Tops
2-4-6-8-10



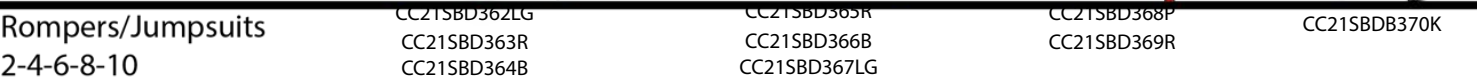
Underwear/Bras
2-4-6-8-10



Leotards/Bodysuits
2-4-6-8-10



Rompers/Jumpsuits
2-4-6-8-10



Corset
2-4-6-8-10



CHAOS COUTURE

