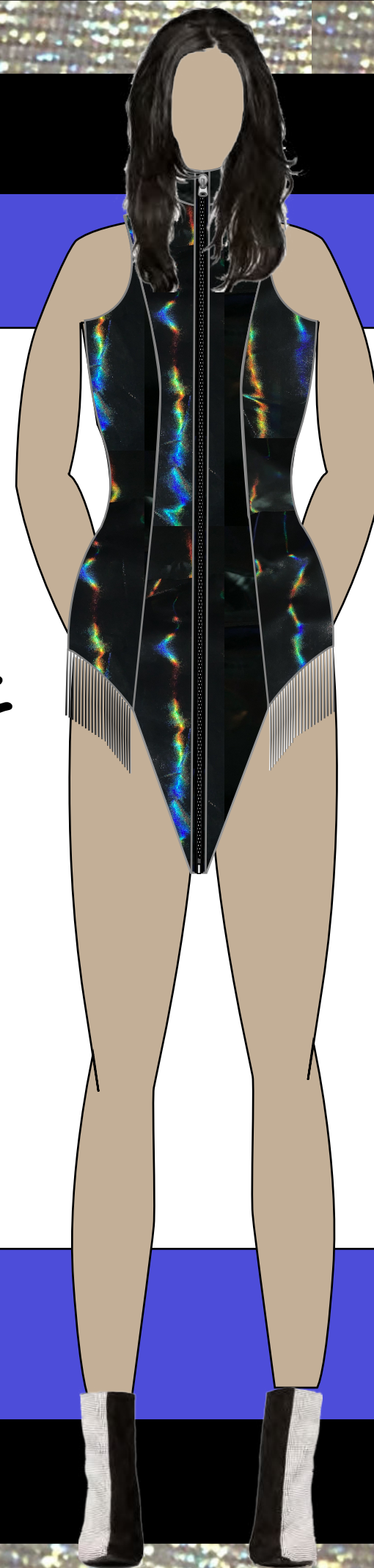


FINAL DRESS
DESIGN

**HOLOGRAPHIC
PRINCESS SEAMLINER
DRESS**



DRESS
TECHNICAL
PACKAGE

Program: Blanca West

Style Name/Number: FW-100

Full Color Front View:

Full Color Back View:

BLANCA
WEST

A Holographic, faux leather dress. The dress will have a princess seamline with a front exposed double zipper. Rhinestone fringe will be attached to the sides of the dress. There will also be metal wire inside the points on the bottom, to give them more structure.

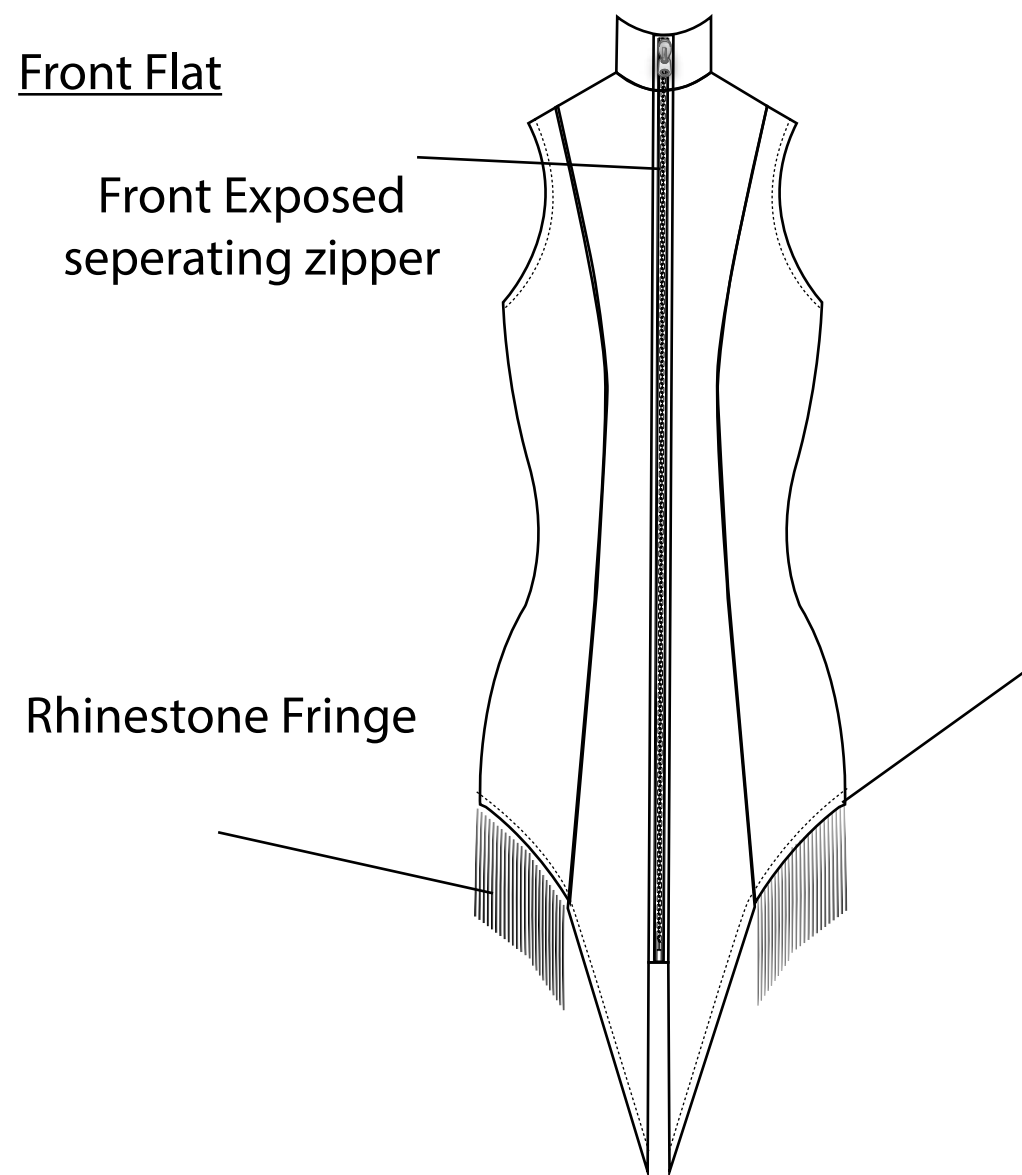
Date: 9-1-2019 Season: S/S 2020 Program: Blanca West

Style #: FW-100 Description: Faux Leather Dress Create Date: 10/8/2019
 Division: Dresses Designer: Emilia Perez Modified Date: 10/16/2019
 Size Category: Womens Technical Designer: Emilia Perez Due Date: 10/23/2019
 Size Range: S-L Fabric Category: Poly/Spandex Ship Date: 2/23/2020
 Estimate: \$120.00 Color/s: Holographic black Vendor/s: F-100

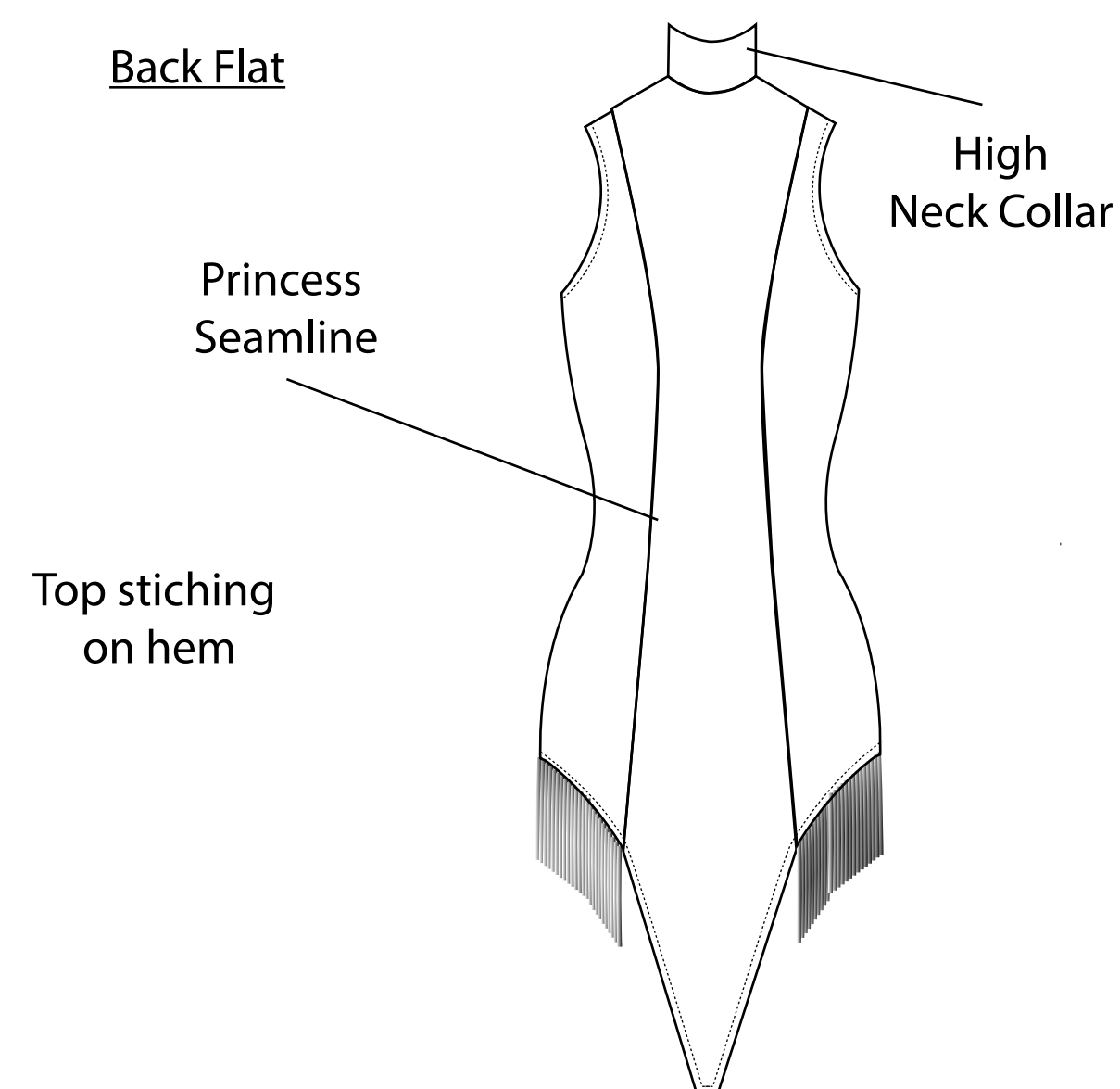
Labeled Front Technical Sketch:

Labeled Back Technical Sketch:

Front Flat

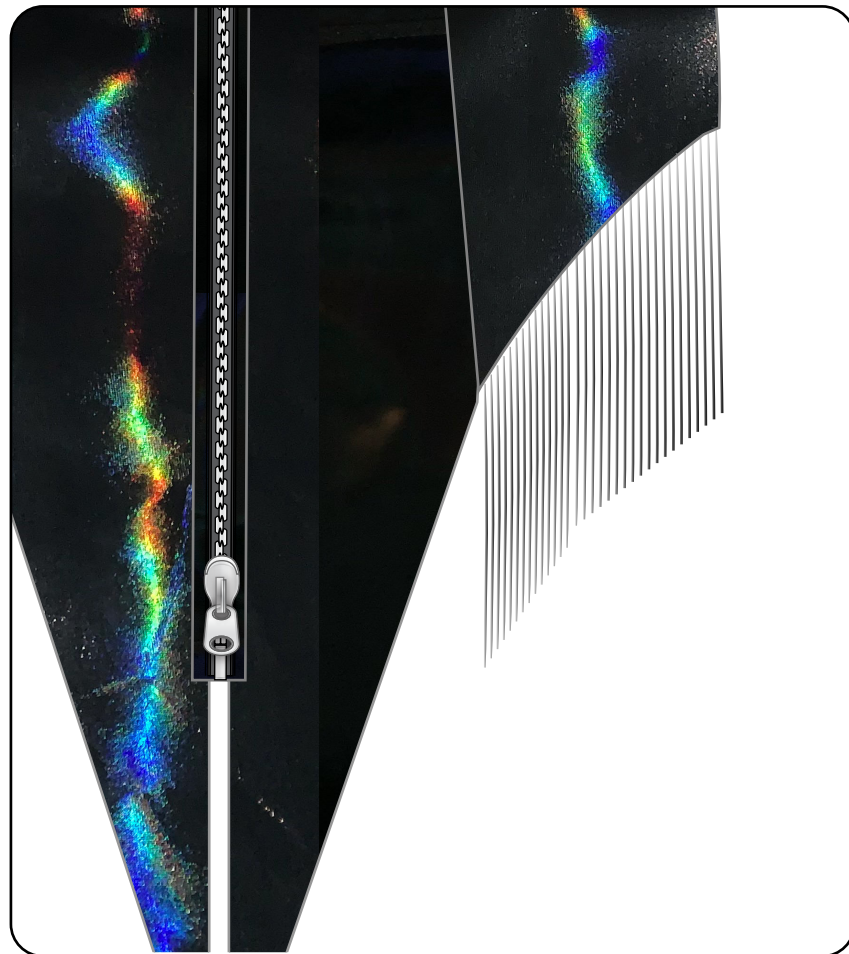


Back Flat



Program: Blanca West

Style Name/Number: FW-100



Detail Closeup #1: _____

ON BOTH SIDES OF THE SIDE PANELS, RHINESTONE

FRINGE WILL BE ATTACHED TO THE HEM.

THE TRIM WILL BE 5" LONG

Detail Closeup #2: _____

THE FRONT ZIPPER WILL BE AN EXPOSED

SEPERATING DOUBLE ZIPPER AT 36" LONG.

Detail Closeup #3: _____

THE DESIGN WILL CONSIST OF A PRINCESS SEAM

LINE ON THE FRONT AND BACK OF DRESS. WITH

A FRONT ZIPPER THAT EXTENDS FROM THE TOP

OF THE COLLAR TO 6" UP FROM THE HEM.

Program: Blanca West Style Name/Number: FW-100

Sketch Labeled With Material/s Location:

Fabric Swatches:

Fabric A #: NEON 4-WAY STRETCH Fabric B #: _____

Fiber Content: Poly 95% Spandex 5% Fiber Content: _____

Fabric C #: _____ Fabric D #: _____

Fiber Content: _____ Fiber Content: _____

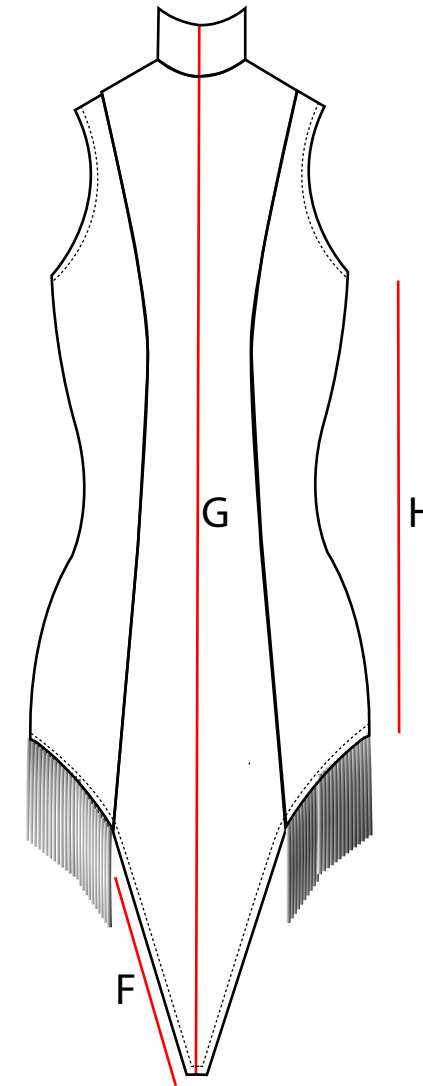
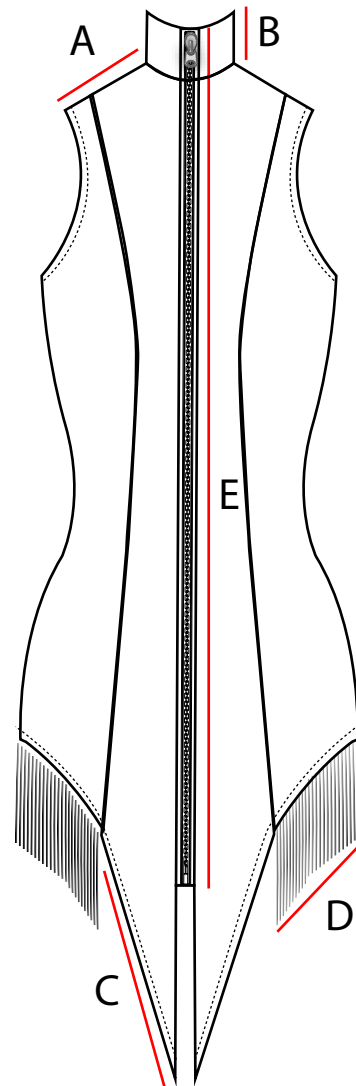
Code	Description	Item #/ Vendor	Use	Fiber Content	Color	Width (in)	Qty. Per Garment	Unit	Unit Price
A	Holographic Black	#9876	BIKINI SHELL/LINING	Poly 95% SPNX 5%	HOLO Black	59"	1.5	YD	\$29/YD
B									
				Target Cost			Actual Cost		\$41.50

Technical Sketch Labeled with POM's

Program: Blanca West Style Name/Number: FW-100

Front:

Back:



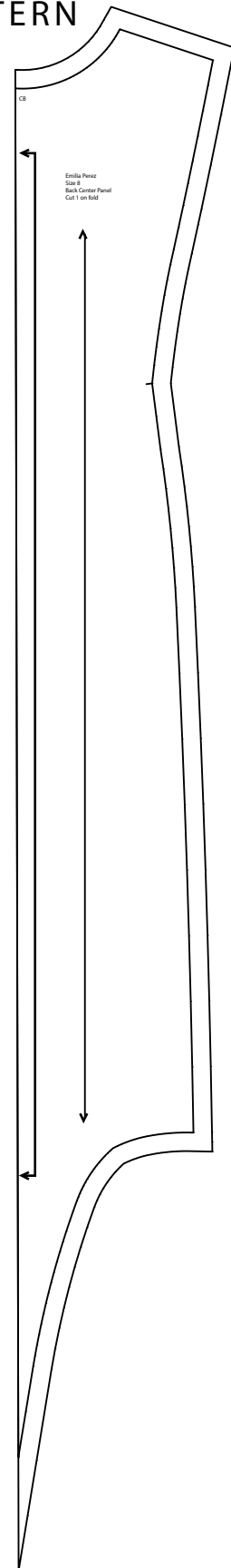
Code	Point of Measurement	TOL +/-	Units	XS	S	M	L	XL	2X			
A	SHOULDER LENGTH	.5" +/-	IN		4.5"	4.5"	5.5"					
B	COLLAR HEIGHT	.5" +/-	IN		1 1/4"	1 1/4"	1 3/4"					
C	LENGTH OF FRONT POINT	.5" +/-	IN		8.5"	9.5"	10.5"					
D	FRONT WIDTH OF FRINGE	.5" +/-	IN		6.5"	7"	8"					
E	ZIPPER LENGTH	.5" +/-	IN		36"	36"	38"					
F	BACK POINT LENGTH	.5" +/-	IN		8.5"	9.5"	10.5"					
G	FULL LENGTH	.5" +/-	IN		39"	40.5"	41"					
H	SIDE LENGTH	.5" +/-	IN		19.5"	20"	20.5"					

Digitized Pattern Pieces With Seam Allowances/Marking

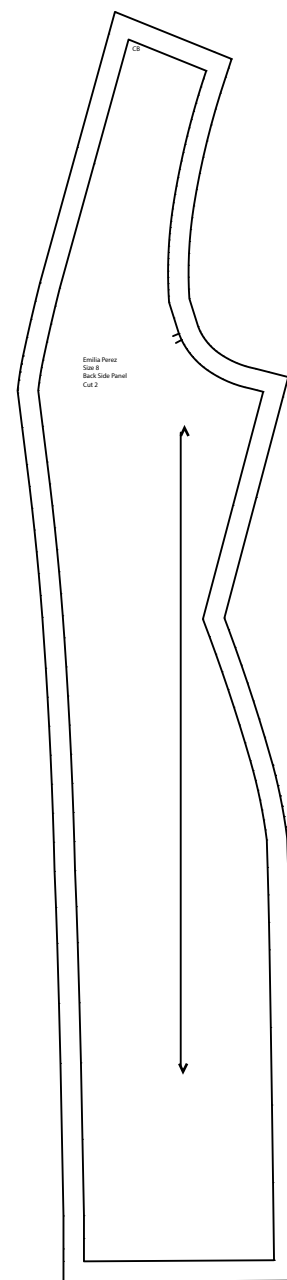
Program: Blanca West Flexwear Style Name/Number: FW-100

DRES PATTERN

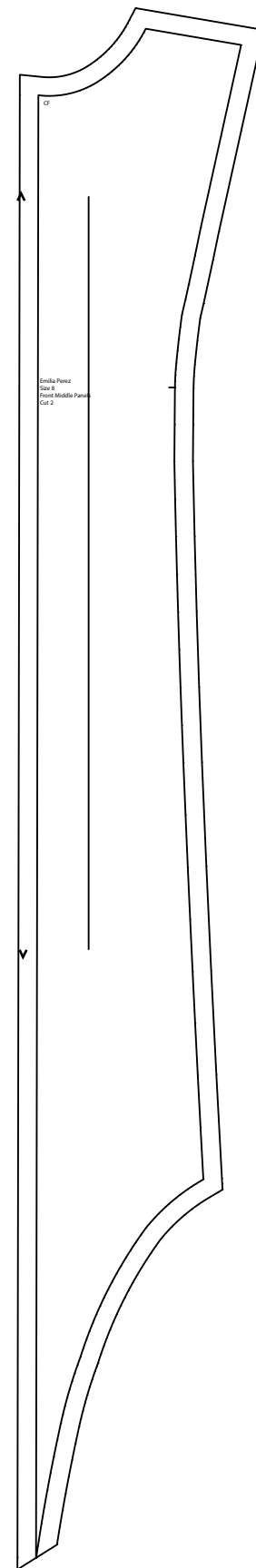
A



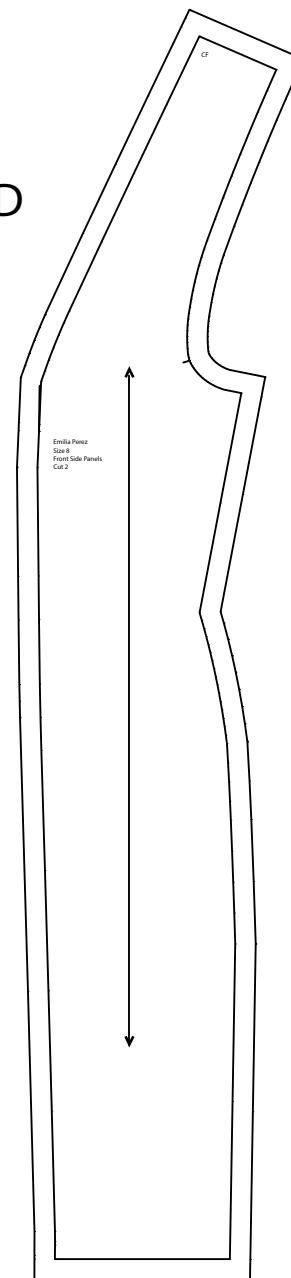
B



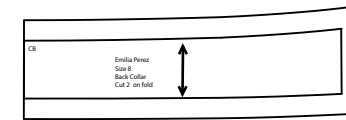
C



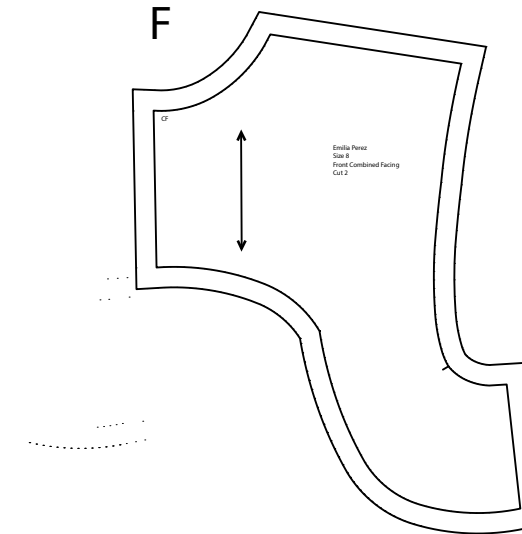
D



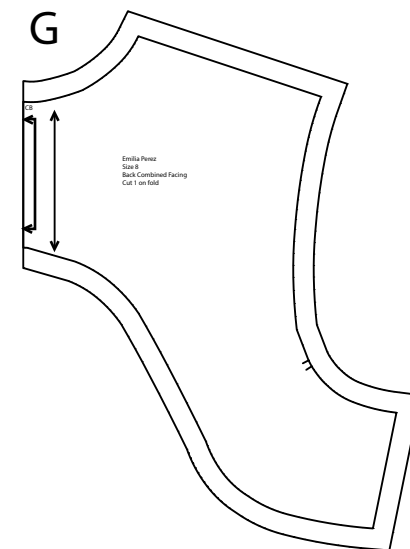
E



F



G



Style Name/Number: FW-100 Size Range: S-L Total # of Pattern Pieces: FW-100

Code	Pattern Piece Name	# Of Cuts	On Fold (Y/N)	On Bias (Y/N)	Seam Allowance (In.)	Adjustments
A	BACK CENTER PANEL	1	Y	N	.5"	
B	BACK SIDE PANEL	2	N	N	.5"	
C	FRONT CENTER PANEL	2	N	N	.5"	
D	FRONT SIDE PANEL	2	N	N	.5"	
E	COLLAR	2	Y	N	.5"	
F	FRONT COMBINED FACING	2	N	Y	.5"	
G	BACK COMBINED FACING	1	Y	N	.5"	

Mock-Up Adjustments:

*collar: remake completely @ 16" long

*fix side length adding .5" to hem on front side peice

*add seam allowance to front combined facing

*take off .5" from front middle piece

Program: Blanca West Style Name/Number: FW-100

Care Label (Specs)

Main Label #1 (Specs)

Main Label #2 (Specs)

Hangtag (Specs)

The diagram illustrates four label types within a large rectangular frame:

- Label A:** A vertical rectangular care label with a white background and black text. The text reads: "Spot clean by hand in cold water, hang to dry, do not dry clean" and "Made in the U.S.A." at the bottom. Dimensions are 3" wide and 1" high.
- Label B:** A horizontal rectangular label with a yellow background and black text. The text reads "BLANCA WEST" with a stylized logo between the words. Dimensions are 2.5" wide and .5" high.
- Label C:** A small yellow square label with the letter "M" in black. Dimensions are 2.5" wide and .5" high.
- Label D:** A vertical rectangular hangtag with a white background and black text. The text reads "BLANCA WEST" with a stylized logo between the words. Dimensions are 2.5" wide and 4" high.

Label Details: Printed/Woven/Material/Size/Shape/Placement/How it will be attached/ Care label/Wash Instructions

Care Label Information: _____

A: WILL BE PLACED ON THE BOTTOM LEFT SEAM 4" UP FROM THE HEM.

B: WILL BE PLACE CENTER BACK .5 IN DOWN FROM COLLAR SEAM.

C: WILL BE SEWN RIGHT BELOW IN THE CENTER OF LABEL B.

D: WILL BE ATTACHED TO THE TOP OF RIGHT SLEEVE SEAM WITH A SAFTY PIN AND BLACK STRING.



Bill of Materials

(323) 440-7448 // Los Angeles, CA 90015

Program: Blanca West Style Name/Number: FW-100 Color: HOLOGRAPHIC BLACK Units: 100

Component	Qty/Yield	Unit Price	Total	Component	Qty/Yield	Unit Price	Total
Fabrics				Labor/Send Out			
HOLO BLACK	1.5 YDS	\$29/YD	\$41.50				
Total Fabric Cost			\$41.50	Total Labor Cost			
Trims				Packing Materials			
CRYSTALS	2.5/YD	\$12/YD	\$30	Poly Bag	20/Pk	\$12/Pk	\$12
STRETCH INTERFACING	1 ROLL	\$14/ROLL	\$14				
BLACK Bulky Thread	2 Cones	\$10/Cone	\$20				
Total Trim Cost			\$64.00	Total Packaging Cost			\$12.00
Total Units	100	Cost Per Unit		\$117.50	Total Production Cost		\$11,750.00

FINAL DESIGN

FRONT



BACK



SIDE

