

**HOLOGRAPHIC  
FRINGE CROP-TOP  
&  
TROUSER**



TOP  
TECHNICAL  
PACKAGE

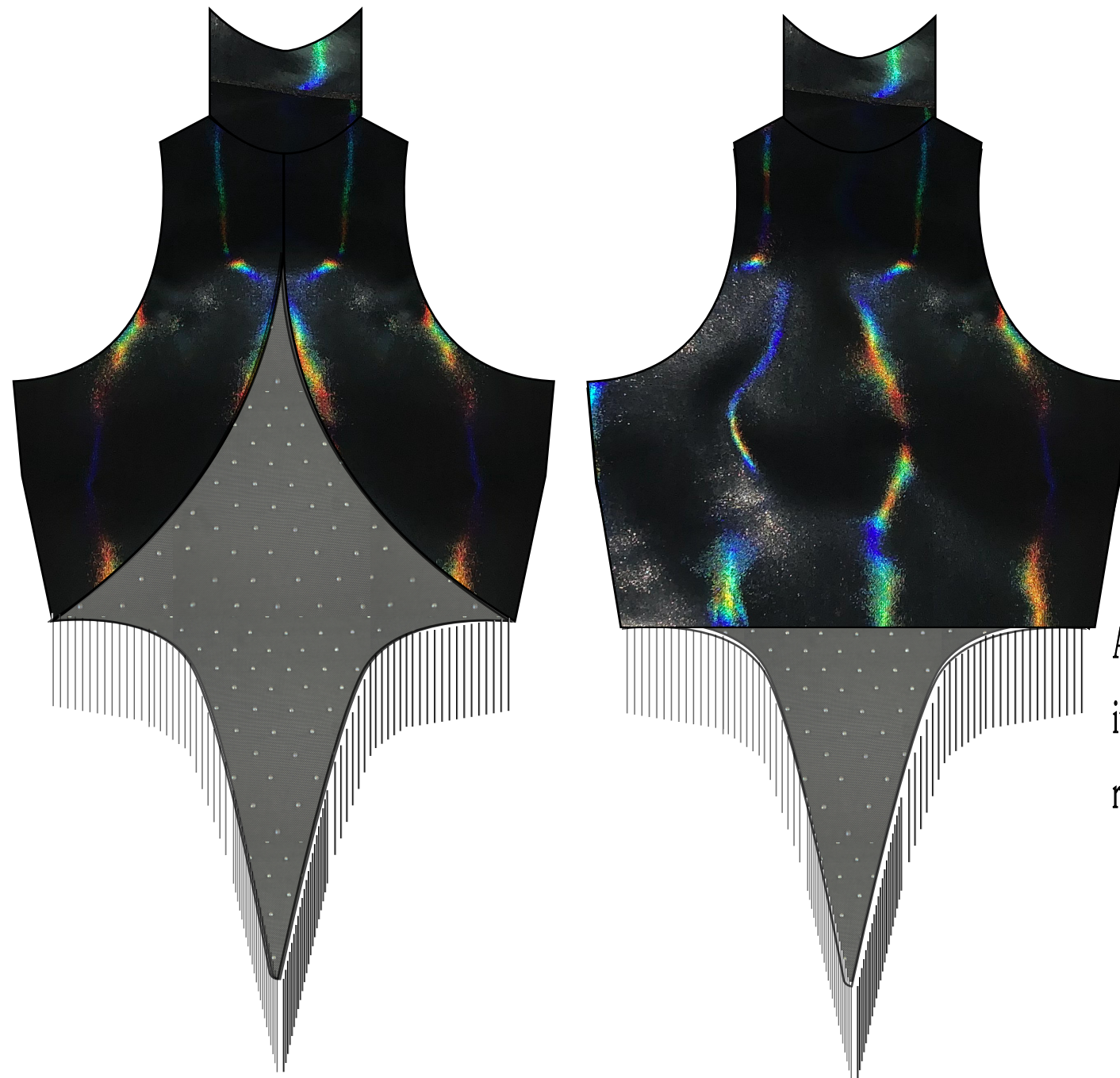


Program: Blanca West

Style Name/Number: FW-100

Full Color Front View:

Full Color Back View:



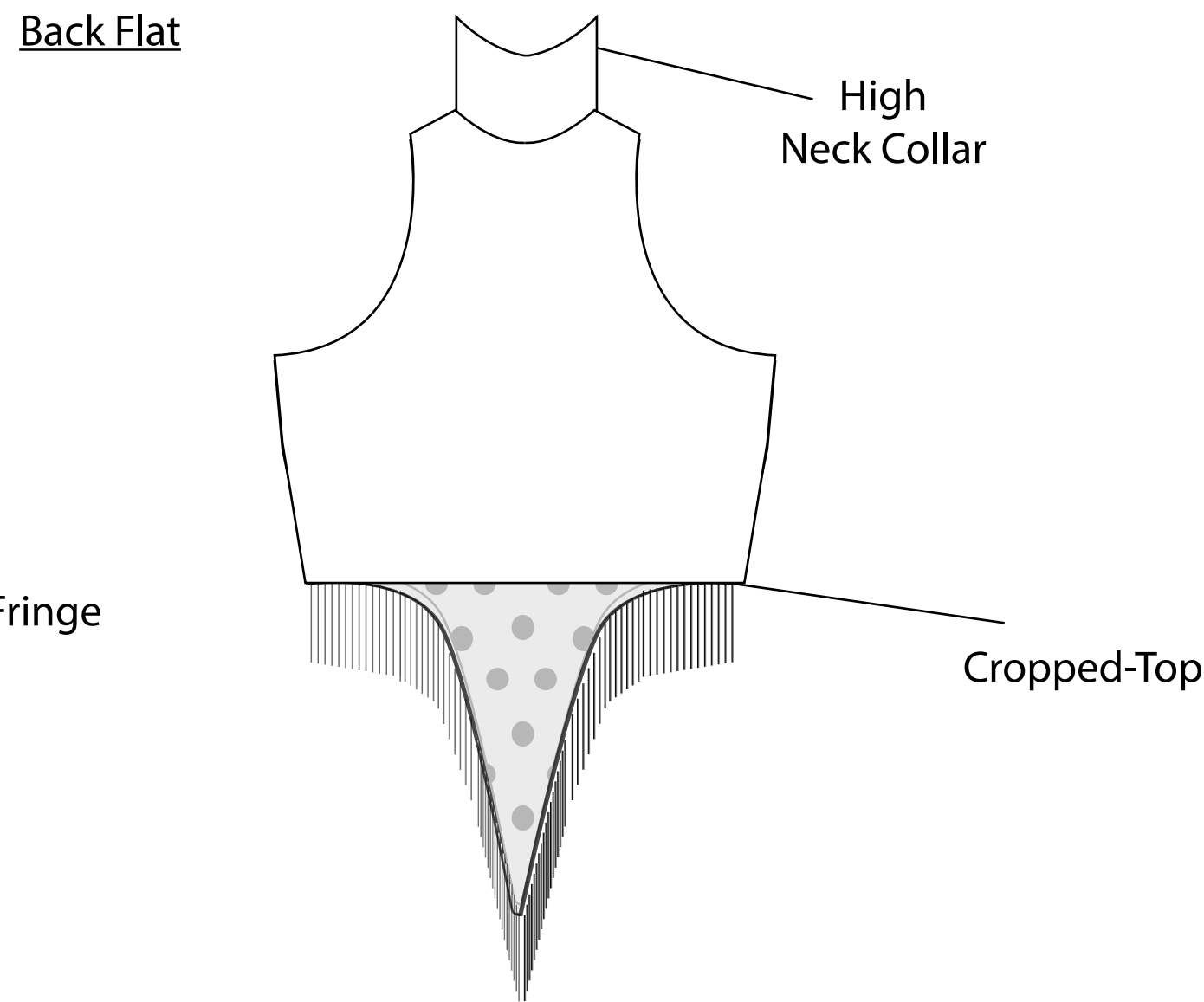
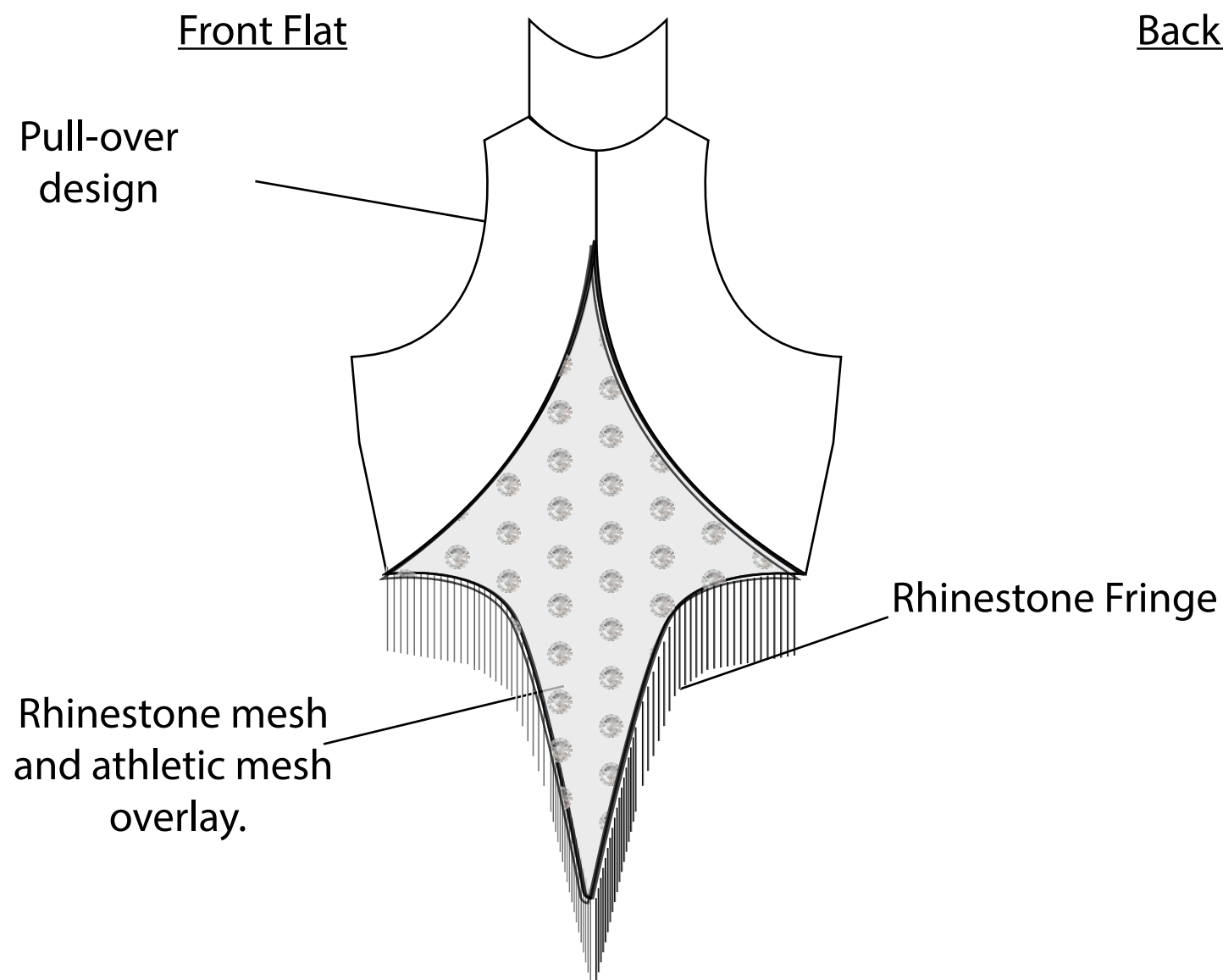
A Holographic, high neck crop top with rhinestone fringe. It is made out of spandex fabric so it will have a pull over fit. The collar is 1" tall. The middle panel on the front is a contrasting rhinestone mesh fabric with a rhinestone fringe trim sewn along the front hem.

Date: 9-1-2019 Season: S/S 2020 Program: Blanca West

Style #: <u>FW-100</u>	Description: <u>Faux Leather Crop Top</u>	Create Date: <u>10/25/2019</u>
Division: <u>Blouse</u>	Designer: <u>Emilia Perez</u>	Modified Date: <u>11/1/2019</u>
Size Category: <u>Womens</u>	Technical Designer: <u>Emilia Perez</u>	Due Date: <u>12/9/2019</u>
Size Range: <u>S-L</u>	Fabric Category: <u>Poly/Spandex</u>	Ship Date: <u>2/1/2020</u>
Estimate: <u>\$120.00</u>	Color/s: <u>Holographic black</u>	Vendor/s: <u>F-100</u>

Labeled Front Technical Sketch:

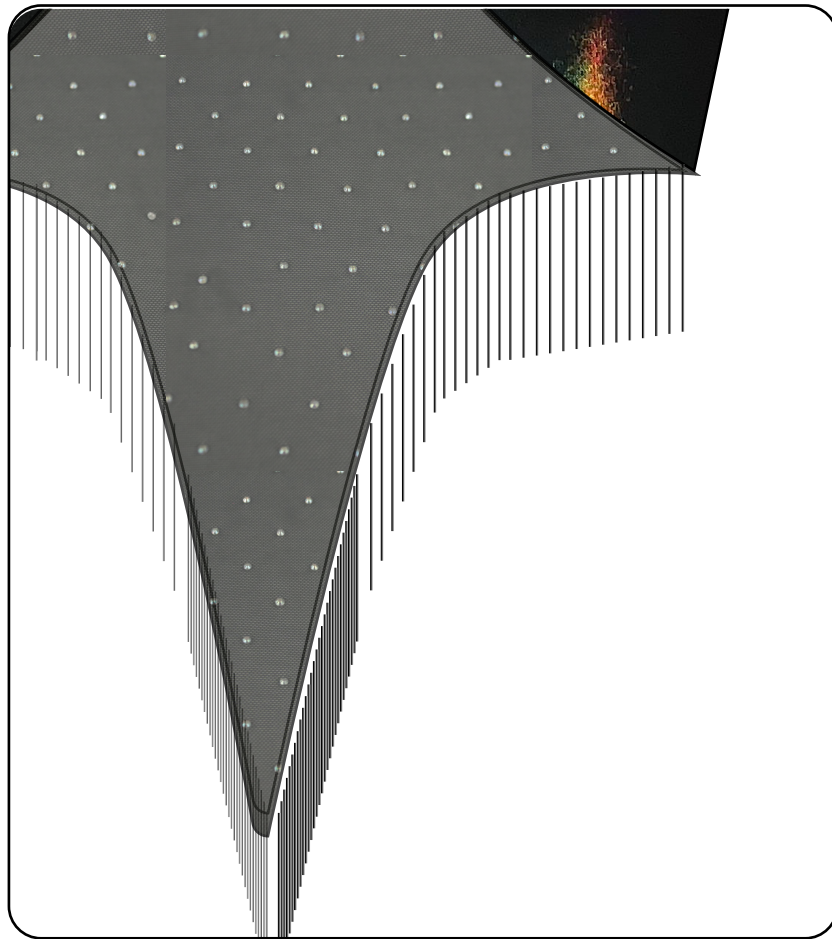
Labeled Back Technical Sketch:





Program: Blanca West

Style Name/Number: FW-100



Detail Closeup #1: \_\_\_\_\_

ON BOTH SIDES OF THE FRONT MIDDLE

PANELS, A RHINESTONE FRINGE TRIM WILL BE

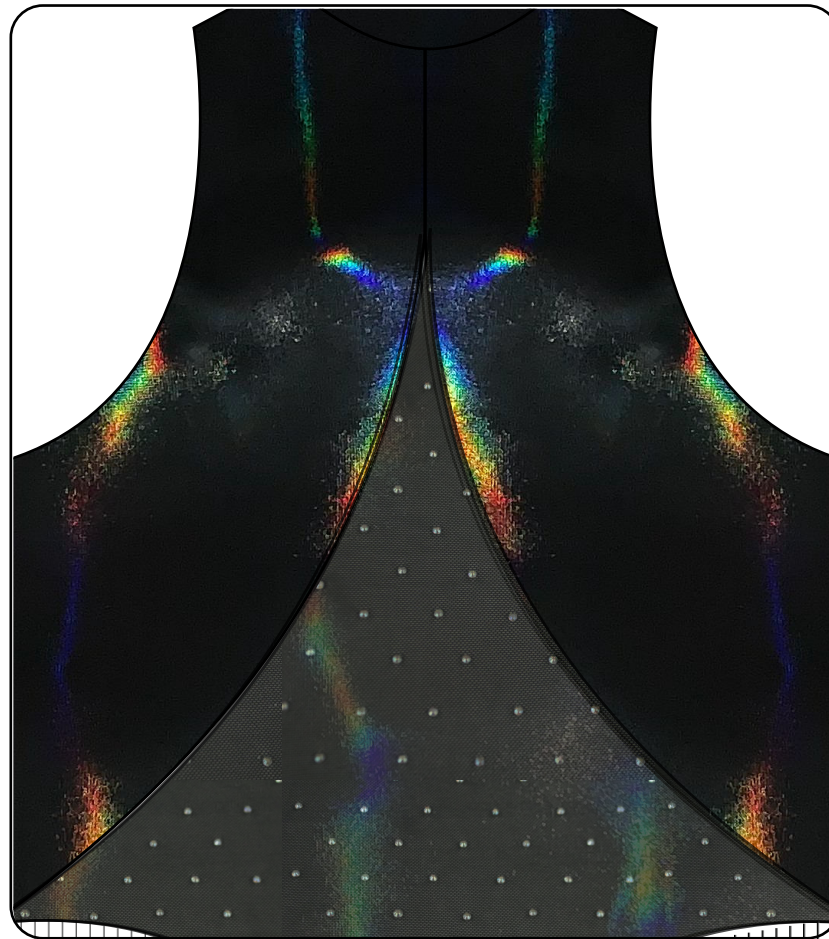
ATTACHED TO THE HEM. THE LENGTH OF EACH

STRAND WILL BE 12 RHINESTONES LONG.

\_\_\_\_\_

\_\_\_\_\_

\_\_\_\_\_



Detail Closeup #2: \_\_\_\_\_

THE FRONT WILL HAVE A SEE THROUGH MIDDLE

PANEL THAT CURVES AROUND THE CHEST, ONLY

EXPOSING THE MIDDLE TORSO.

\_\_\_\_\_

\_\_\_\_\_

\_\_\_\_\_

\_\_\_\_\_



Detail Closeup #3: \_\_\_\_\_

THE DESIGN WILL CONSIST OF A HIGH COLLAR

THAT IS WIDE ENOUGH TO JUST BE PULLED

OVER THE HEAD.

\_\_\_\_\_

\_\_\_\_\_

\_\_\_\_\_

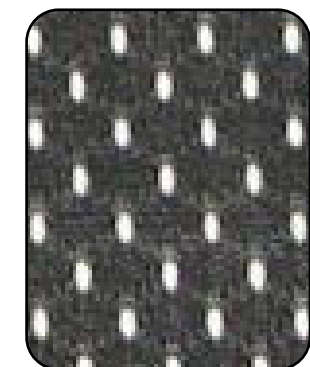
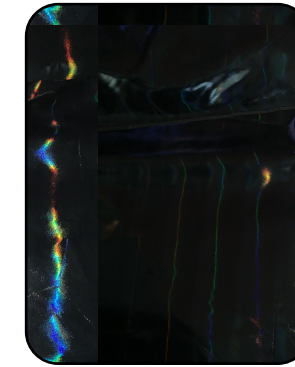
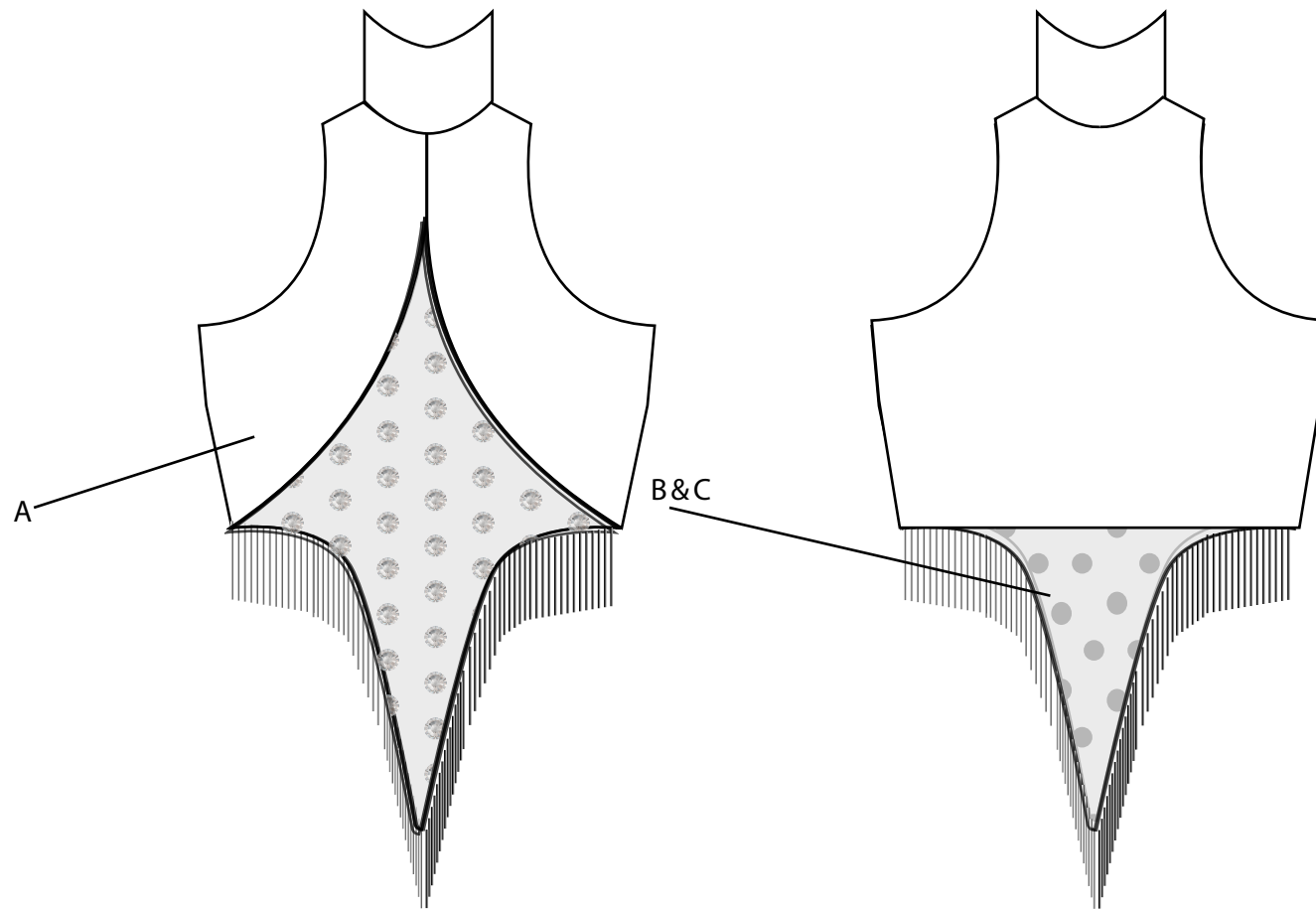
\_\_\_\_\_

Program: Blanca West

Style Name/Number: FW-100

Sketch Labeled With Material/s Location:

Fabric Swatches:



Fabric A #: NEON 4-WAY STRETCH Fabric B #: BLACK RHINESTON MESH Fabric C #: ATHLETIC MESH

Fiber Content: Poly 95% Spandex 5% Fiber Content: Poly 80% Spandex 20% Fiber Content: Poly 95% Spandex 5%

Code	Description	Item #/ Vendor	Use	Fiber Content	Color	Width (in)	Qty. Per Garment	Unit	Unit Price
A	Holographic Black	#9876	SHELL	Poly 95% SPNX 5%	HOLO Black	59"	1.5	YD	\$29
B	Black Rhinestone Mesh	#9826	FRONT SHELL	Poly 80% SPNX 20%	Black	59"	1.	YD	\$13
C	BLACK ATHLETIC MESH	#9576	FRONT SHELL	Poly 98% SPNX 2%	Black	59"	1	YD	\$10
D	RHINESTONE TRIM	#9274	TRIM	METAL/RIBBON	BLACK/SILVER	59"	1	EA	\$4
E	RHINESTONE CHAIN	#3466	TRIM	METAL	SILVER	1/4"	4	YD	\$12
				<b>Target Cost</b>			<b>Actual Cost</b>		<b>\$104</b>

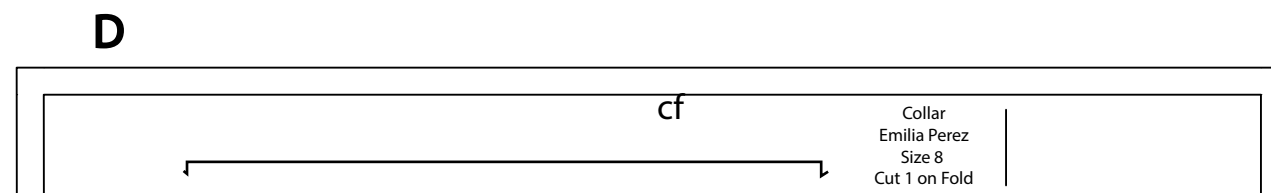
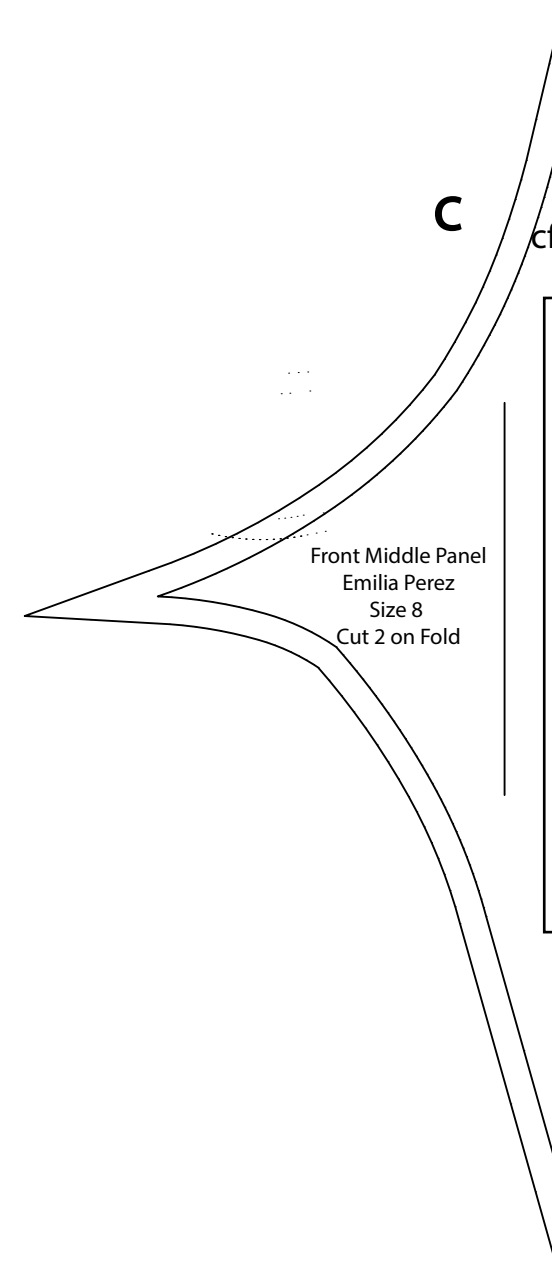
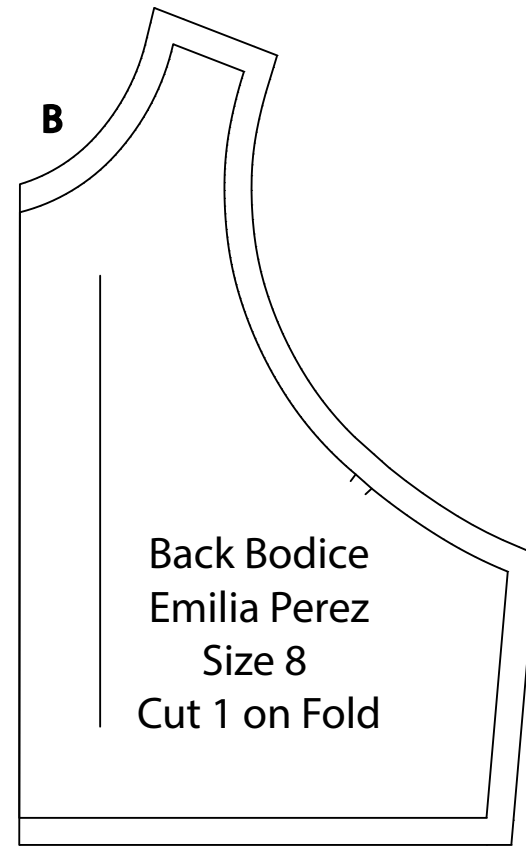
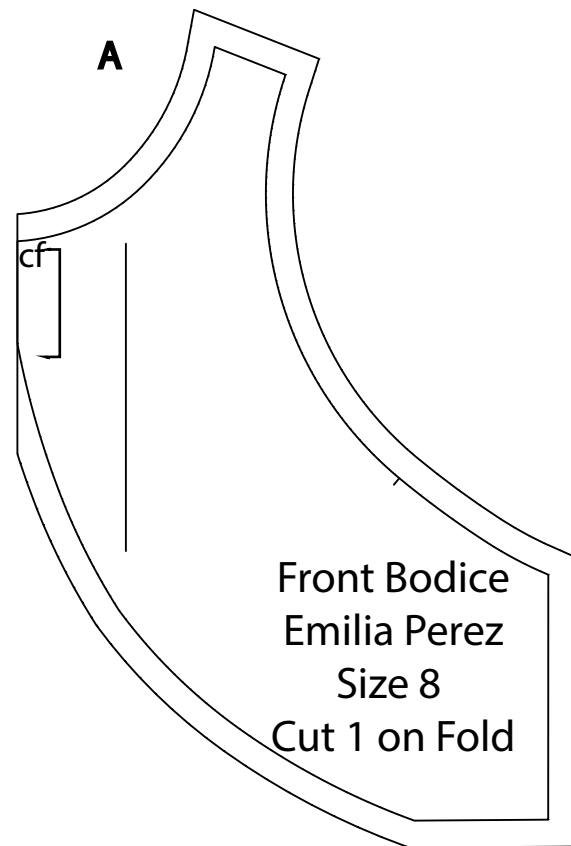




Digitized Pattern Pieces With Seam Allowances/Marking

Program: Blanca West Flexwear Style Name/Number: FW-100

TOP PATTERN





Style Name/Number: FW-100 Size Range: S-L Total # of Pattern Pieces: FW-100

Code	Pattern Piece Name	# Of Cuts	On Fold (Y/N)	On Bias (Y/N)	Seam Allowance (In.)	Adjustments	
A	FRONT SIDE PANEL	1	Y	N	.5"		
B	BACK SIDE	1	Y	N	.5"		
C	FRONT CENTER PANEL	2	Y	N	.5"		
D	COLLAR	1	Y	N	.5"		

Mock-Up Adjustments:

SEW MIDDLE OF FRONT SIDE PANEL WHEN ATTACHING TO THE MIDDLE PANEL.

Program: Blanca West

Style Name/Number: FW-100

Care Label (Specs)

Main Label #1 (Specs)

Main Label #2 (Specs)

Hangtag (Specs)

Care Label (Specs)

Spot clean  
by hand  
in cold water,  
hang to dry,  
do not dry clean  
Made  
in the U.S.A.

1"

Main Label #1 (Specs)



2.5"



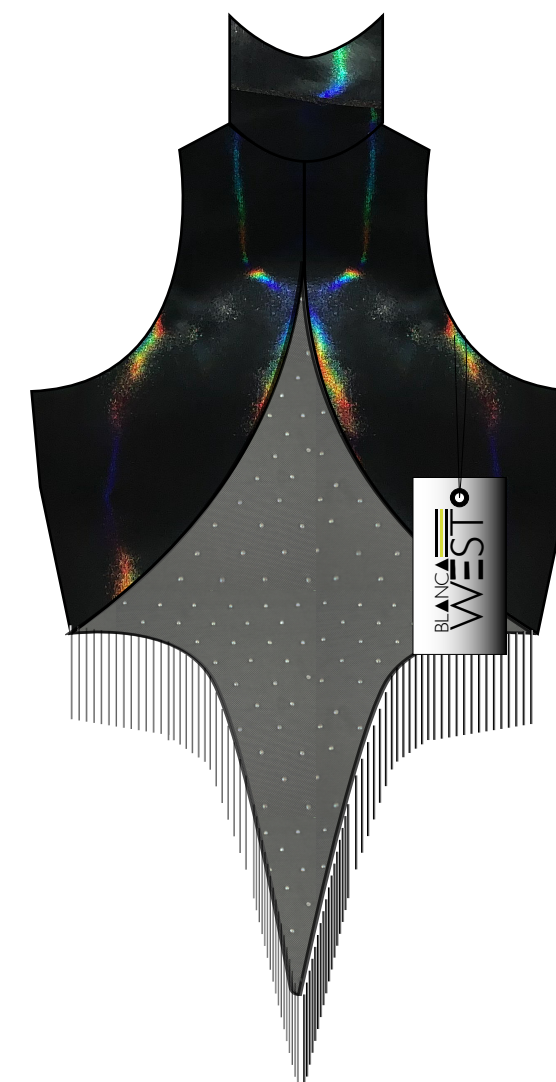
Main Label #2 (Specs)

3"

Hangtag (Specs)



2.5"



Label Details: Printed/Woven/Material/Size/Shape/Placement/How it will be attached/ Care label/Wash Instructions

Care Label Information:

THE CARE LABEL AND MAIN LABELS WILL BE SEWN INSIDE THE TOP ON THE BACK. CENTERED FROM THE TOP, UNDERNEATH THE COLLAR.



# Bill of Materials

(323) 440-7448 // Los Angeles, CA 90015

Program: Blanca West Style Name/Number: FW-100 Color: HOLOGRAPHIC BLACK Units: 100

Component	Qty/Yield	Unit Price	Total	Component	Qty/Yield	Unit Price	Total
<b>Fabrics</b>				<b>Labor/Send Out</b>			
HOLO BLACK	1 YDS	\$29/YD	\$29.00				
BLACK RHINESTONE MESH	1 YDS	\$13/YD	\$13.00				
BLACK MESH	1 YDS	\$10/YD	\$10.00				
<b>Total Fabric Cost</b>			<b>\$52.00</b>	<b>Total Labor Cost</b>			
<b>Trims</b>				<b>Packing Materials</b>			
RHINESTONE CHAIN	2.5/YD	\$12/YD	\$30	Poly Bag	20/Pk	\$12/Pk	\$12
RHINESTONE TRIM	1YD	\$4/EA	\$4				
BLACK Bulky Thread	2 Cones	\$10/Cone	\$20				
<b>Total Trim Cost</b>			<b>\$106.00</b>	<b>Total Packaging Cost</b>			<b>\$12.00</b>
<b>Total Units</b>	<b>100</b>	<b>Cost Per Unit</b>		<b>\$118.00</b>	<b>Total Production Cost</b>		<b>\$11,800.00</b>