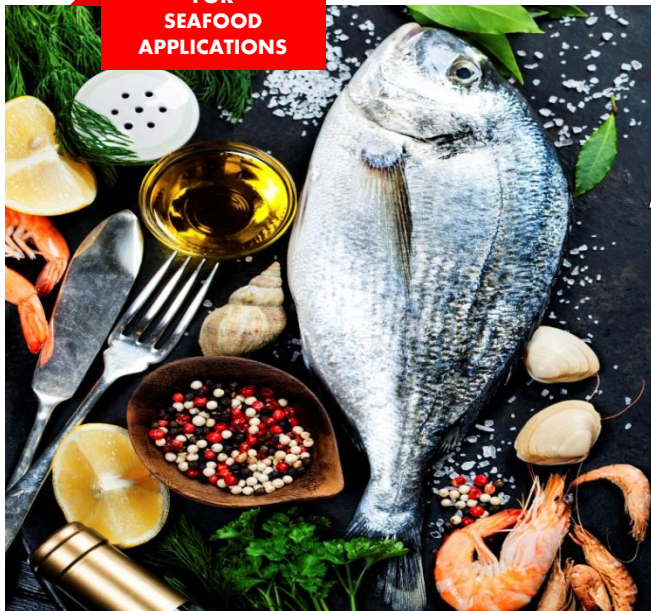


FOR
SEAFOOD
APPLICATIONS

Products and Solutions to Ensure *Better, Safer, and Healthier* Seafood



Running a seafood operation is anything but simple, easy, or clean.

Let Our Products Help With That.

Fish Facts:



Consuming 8 oz. of fresh seafood carries

29
Times

The risk of contracting foodborne illness than consuming 8 oz. of dairy

SOURCE: United States Center for Science in the Public Interest

Fresh seafood spoils

8 Times

Faster in room temperature conditions (65°F) than when frozen

SOURCE: Univ. of California, United States Dept. Of Agriculture & Commerce

What do we do?

SMT's Selectocide® product can be added to wash water, directly sprayed on raw seafood, and used as an antimicrobial application to treat ice for display or storage. Our purpose is to ensure that your harvested delicacies maintain a fresh flavor and healthy appearance during all phases of a preparation process.

Experience a product that:

- Eliminates bacteria
- Improves shelf life
- Is compatible with sodium triphosphate
- Keeps spoilage microbes from multiplying
- Protects against melanosis and other post-harvest issues

Please Note: None of SMT's products leave residual film, alter or taint the taste of food or require rinsing.

Effective and easy to use

Selectocide® attacks destructive bacteria in raw and cooked seafood products. By selectively targeting the bacteria at a molecular level, Selectocide® effectively destroys spoilage microbes without harming the taste or appearance of aquatic fare.

Pure ClO₂ by SMT

SMT's pure ClO₂ solution is a safe, organic alternative to conventional chlorine products. It is extremely effective at low concentrations and carries the lowest toxicity profile possible. Because of its unique chemical properties, Selectocide® is approved by the FDA.

Certifications and Registrations:



Learn more about how SMT can help you with food-borne diseases or waste caused by spoilage.

Selective Micro Technologies *Innovators in Microbial Solutions*

SelectiveMicro.com

smt
LIMITLESS CLEAN