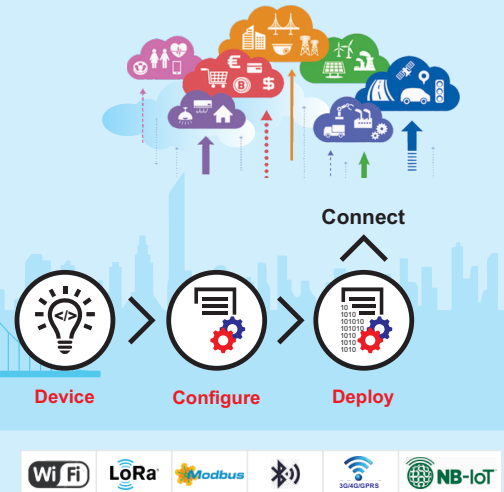


# Indino 4.0

Connected Intelligence

## Programmable Intelligent Sensing Devices for IoT & Data Analytics Applications



### Overview

Indino 4.0 series defines a new way of transforming factories into smart/intelligent factories for efficient and easy remote monitoring operational status of facilities such as on/off status, pressure and temperature. Indino 4.0 supporting for wide range of industrial protocols like Modbus, MQTT, JSON, RESTful, TCP/UDP, SNMP protocol, which makes the monitoring and solution integration, easier than ever for IT engineers through open source APIs.

### Features

#### Processor:

- Tensilica Xtensa 32-bit LX6 microprocessor
- Clock frequency: up to 240 MHZ, up to 600 DMIPS
- ROM: 448 KB SRAM: 520 KB

#### Co controller:

Atmega 2560, 16MHz, FLASH 256KB / STM32\*

#### Digital IO

- 24v 8x Isolated interrupt Enabled digital input
- 24v 4x Isolated Digital output / PWM
- AC Isolation: 3750VRMS
- Contacts supported: DRY / WET

#### Wired Connectivity

RS485 MODBUS, RS232 & USB, RDL expansion bus

**Memory:** FRAM 25KB, SD CARD 32GB

**RTC:** Built-in RTC for stamped data logging

#### Wireless connectivity:

- Wi-Fi: 802.11 b/g/n/e/i (802.11n up to 150 Mbit/s)
- Bluetooth: v4.2 Bluetooth Low Energy (BLE)

#### Protocol:

TCP-IP, UDP, SNMP, MODBUS, FTP, RESTFULL, JSON & MQTT

#### Security:

- IEEE 802.11 security features: WFA, WPA/WPA2 and WAPI
- Secure boot / Flash encryption
- 1024-bit OTP, up to 768-bit for customers
- Cryptography: AES, SHA-2, RSA, ECC & random number generator (RNG)

**Power supply:** DC 9-30V

#### Enclosure:

- IP 20 • Mounting: Wall / DIN Rail
- Dimension: 108 x 41.2 x 20

### Application

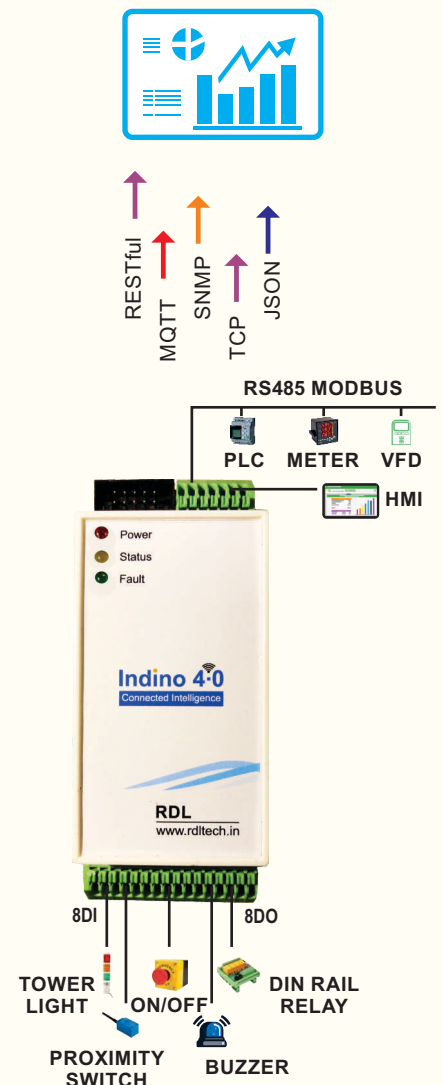
- Production and process monitoring.
- Utilities monitoring.
- Condition monitoring.
- Environment monitoring.
- Industrial Smart grid
- Leakage detection.
- Cold storage monitoring.
- District metering.
- Water treatment.
- Generator monitoring.
- Green House.
- Warning message in case of calamities.
- Standard SCADA Applications

### Operation Benefits

Indino 4.0 can used to build the custom industrial solution for monitoring and controlling PLC and SCADA, HMI, VFD, Motors, servo, Valves, energy meter, actuators, relays, encoder, rfid and finger print readers, industrial sensors and many more with below mentioned operational benefits.

- Improved productivity.
- Reduced downtime.
- Maximized asset utilization.
- Tracking trends for real-time marketing.
- Enhanced situational awareness.
- Sensor-driven decision analytics.
- Instantaneous control and response in complex autonomous systems.

### Remote IO Solution



# INDUSTRIAL AUTOMATION SIMPLIFIED

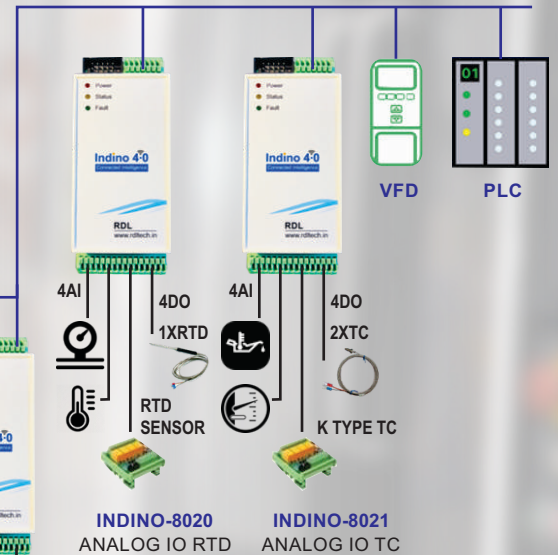
**Indino 4.0**  
Connected Intelligence



Managed Ethernet Switch

RESTful  
MQTT  
SNMP  
TCP  
JSON

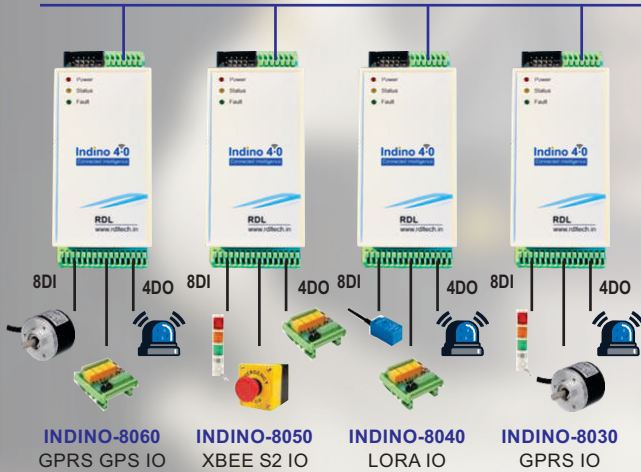
RS485 BUS



RDL BUS



RS485 BUS



INDINO-8060  
GPRS GPS IO

INDINO-8050  
XBEE S2 IO

INDINO-8040  
LORA IO

INDINO-8030  
GPRS IO



**RDL Technologies Pvt. Ltd.**



P: +91 824 2988407 - [www.rdltech.in](http://www.rdltech.in)  
sales@researchdesignlab.com

5th Floor, Sahyadri Campus, Mangaluru - 575007