



February 2018

Vol. 5, No. 2

New Campbell Blue Bridge opened

By Philip Ronnerud

Although the Campbell Blue Bridge site remains a construction zone, traffic is allowed to use the bridge. The Blue Road, which is about three hours from Clifton, serves local residents, land managers, hunters and recreational users.

The road is also the only year-round access to the one-room Blue School.

To the best of our knowledge the Campbell Blue Bridge was



Please turn to page 2

Excitement at the bridge opening! [Watch the video.](#)

Starting out with strengths

From the RCAC

Editor's note: This is our philosophy as well: Start from strengths, and Greenlee County has them in large quantities.

For the past 35 years, Rural Community Assistance Corporation (RCAC) has provided training, technical and financial resources and advocacy so rural communities can achieve their goals and visions.

In a recent USDA blog, Agriculture Secretary Tom Vilsack notes that the latest Census results tell of unlimited potential and growing opportunity in modern rural America.

RCAC's Building Rural Economies initiative has been created to ensure that rural communities through-out the West will be vibrant, healthy and enduring.

RCAC has a straightforward approach to build rural econo-

mies: we start with assets. Too often, community planning focuses on needs and problems. RCAC concentrates instead on local resources, markets and opportunities, then

Click here to read more

Creating vibrant, healthy and enduring rural communities

About RCAC
RCAC serves rural communities in the western United States and other Pacific Islands

RCAC
www.rcac.org

Building Rural Economies

DEVELOPMENT

For more information on RCAC's Building Rural Economies Program, contact:

Bridge . . .

continued from page 1

built during the 1930s then improved in early 1950s. As were most major drainage ways, the Blue River was used by native Americans and explorers. The European settlers improved the path to a road which became the route from Clifton, Arizona to Reserve, New Mexico.

The first historical record of the road was the creation of a Road Maintenance District in 1895. While the County has rights to use the road at this location (due to the topography) the road actually goes into New Mexico for about $\frac{3}{4}$ of a mile.

The storm on Sept. 13, 2013 washed out the bridge, but the Greenlee County Board of Supervisors was determined to replace it. After dozens of calls and coordination meetings with multiple agencies; funding from the Arizona Department of Transportation was secured.

The County asked Federal Central Lands, a division of the Federal Highway Administration (FHWA), to deliver the project. After several hic-ups, the development process commenced in earnest in late 2016. Preliminary concepts were approved, Environmental permits secured and final bid document were completed. For a project tied to Federal funding, this project moved at breakneck speed.

In September 2017, only four years after the bridge was washed out a preconstruction conference was held in Alpine. The FHWA, Country, Forest Service,

[Click here to read more](#)



Theresa Campbell and Isabella Campbell sing the Star Spangled Banner. [Watch the video.](#)

2018 Clarion has a new look

By Ákos Kovach

Over the last few years the look, photo's, articles as well as the overall feel of the Greenlee Clarion has changed. Today's issue marks yet another change to the 'look' and use of the Greenlee Clarion.

We are actually creating a two section, or two-part, issue to better serve the two primary audiences we serve: those mostly interested in Economic Development pages 1-4, while community outreach, calendar of events, and articles of general interest will be found in the section beginning with page 5. They will be posted separately on the Growing Greenlee Newsletter archive pages.

"But that isn't economic development" — those words were spoken to me recently about the promotion of the Labyrinth Jam Session on the third Saturday of each month. "It's at a church and has nothing to do with economic development." My answer to these comments follows: Estab-

lishing a foothold for the music community here in Greenlee County is as important as developing the Arts Community through events such as the Colors of Copper.

Music transcends language barriers, cultural differences and cares little for borders of any kind — with or without walls or fences.

The happenstance the monthly activity is held at Sts. Philip and James in Morenci should not dissuade anyone from participating or simply coming to listen. Many public events are held in church buildings, especially in small communities, so few people will have a problem with that.

We hope you enjoy the February 2018 issue of the Greenlee Clarion as much as we enjoyed creating it and spicing up the pages with economic development as well those pages that will focus on community news and public service outreach. Your feedback is always welcome.

Greenlee workers highest paid in AZ

From the Copper Era

PHOENIX — Increases in wages for Arizona workers are not keeping pace with the rest of the country.

New figures from the U.S. Bureau of Labor Statistics say the average weekly wage for Arizonans for the second quarter of last year, the most recent available, was \$943. That's up 2.5 percent over the same period a year earlier. But state workers, overall, continue to lose ground nationally.

That \$943 compares with \$1,020 a week for the rest of the country. More to the point, the BLS reports that national wages increased by 3.2 percent.

In fact, the report says wages went up faster in 34 other states than here.

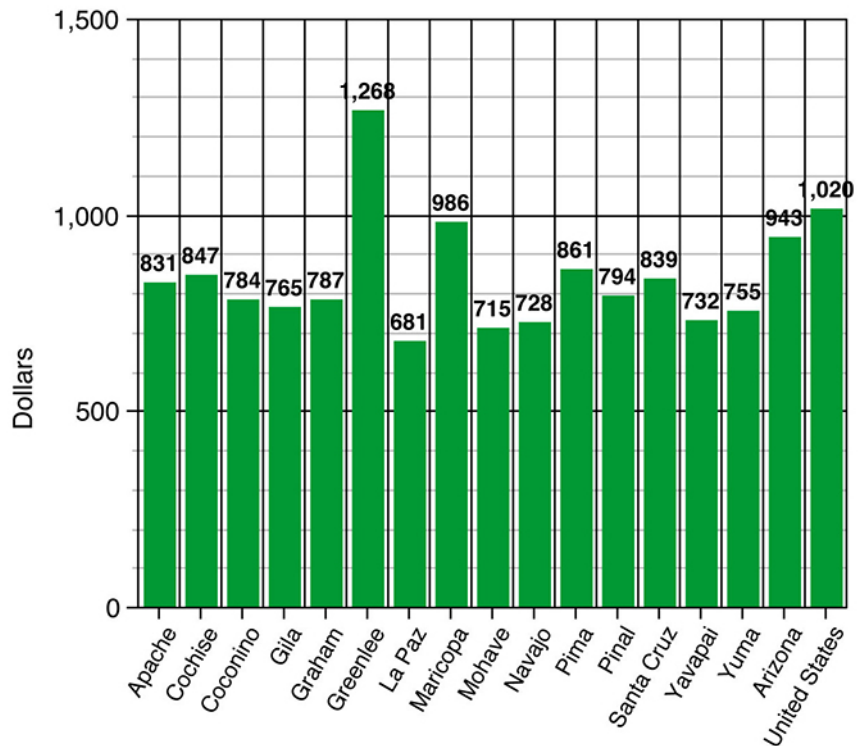
Still, BLS says the average weekly wage in Arizona, while below the national average, is 23rd in the country.

Not surprisingly, what people are paid in Arizona depends on where they live.

Greenlee County posted the highest weekly wage at \$1,268, no doubt driven by the relatively high percentage of the small work force there who are employed in the high-paying mining industry and related businesses.

Maricopa County, where 70

Average weekly salary 2nd quarter 2017



Source: Bureau of Labor Statistics

percent of the state's labor force is located, comes in at No. 2. But the BLS said wages in the state's largest county rose just 1.6 percent in the one-year period ending last June 30.

By contrast, the federal agency found that Pima County wages

are up 4.2 percent over the same period. Still, that left the average weekly wage there at \$839.

The worst wages on average were paid to employees in La Paz County, which posted an average weekly wage of \$681, or just a hair more than \$17 an hour for a 40-hour work week.

Economist Dennis Hoffman, of the W.P. Carey School of Business at Ar

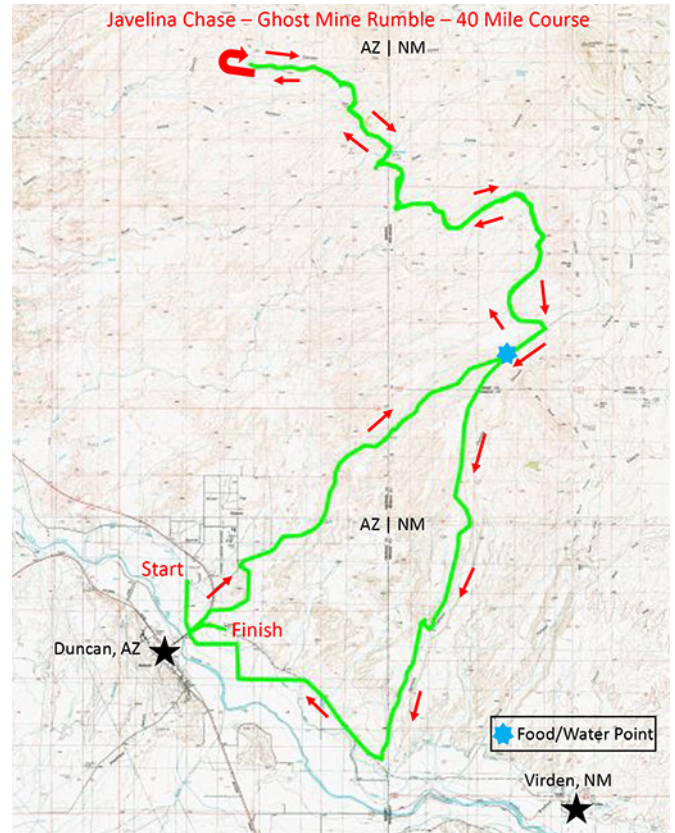
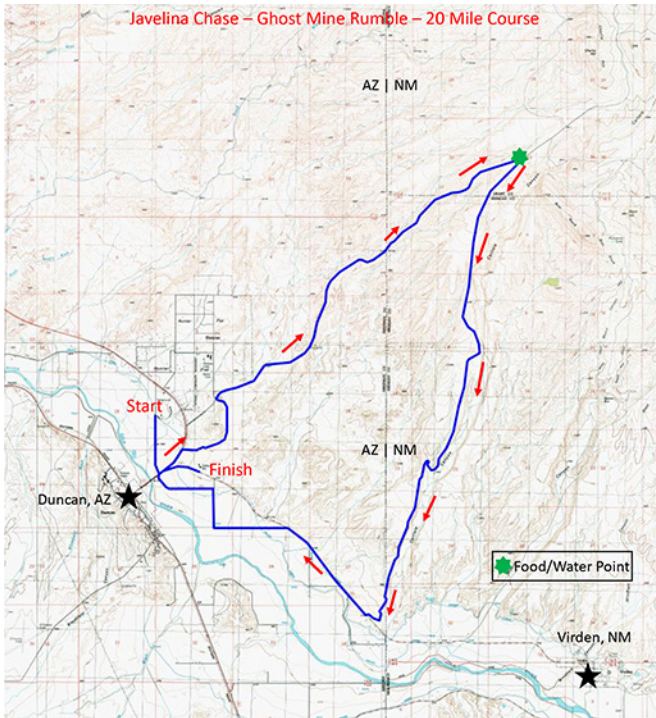
[Click here to read more](#)

[See mining's total impact on Eastern Arizona](#)

DEVELOPMENT



Javelina Chase coming April 14



This year's Javelina Chase / Ghost Mine Rumble is coming up April 14. The challenging bike race will include three distances to attract competitors with different interests: 20, 40 and 60 miles.

The Chase is one of Greenlee County's many annual events that brings hordes of visitors to the area.

The 60-mile route riders will leave Duncan at 0745, then the 40 milers, then the 20 milers.

All of the routes traverse plenty of hills and valleys and all have beautiful vistas and scenery, but the 60-mile route is the most rewarding, starting in the creosotes and winding its way up to the pinyon pines at over 5,000 feet in elevation and back down.

Each course crosses two state lines and three county lines as they wind their way along the remote mining country of western New Mexico and eastern Arizona.

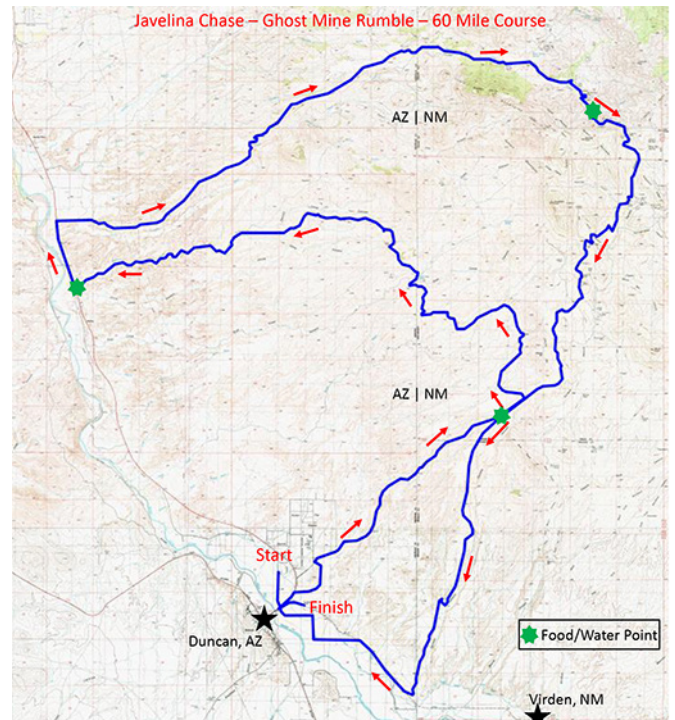
DEVELOPMENT

Chamber annual meeting

The Greenlee County Chamber of Commerce annual meeting will be held Feb. 28, starting at 5:30 p.m., at the Greenlee County Fairgrounds at Duncan.

Keynote speaker will be Ben Menges, past president of Greenlee County Cattle Growers, and chairman of the Graham County Farm Bureau's Young Farmer/Rancher Program.

[Click here](#) for more information about the annual meeting and for an application for Chamber membership.





Keeping track of legislation

By Richard Lunt, Chairman

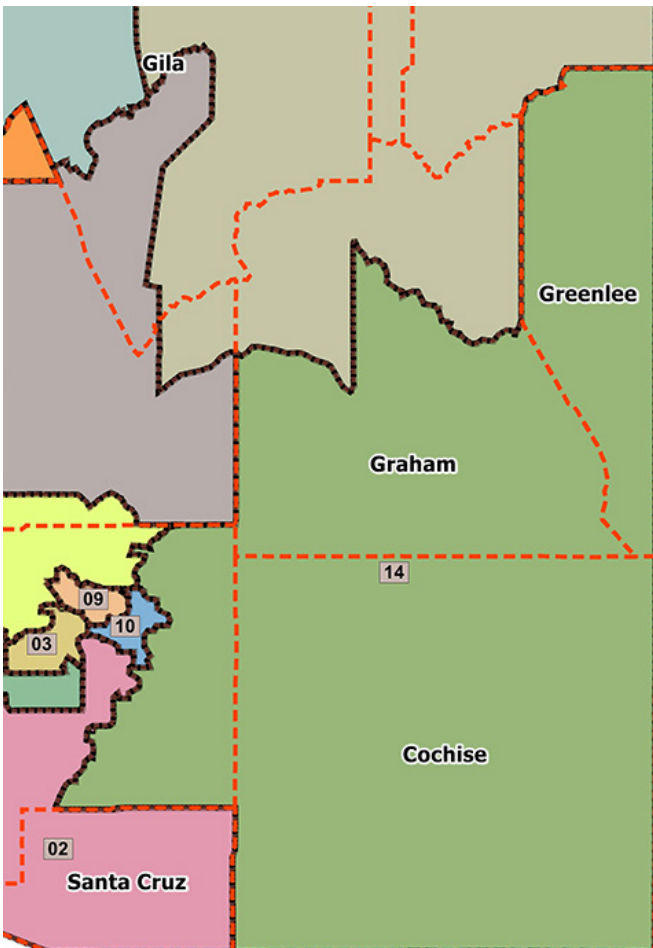
Greenlee County Board of Supervisors

The 2nd Legislative Session of the 53rd Arizona Legislature is in full motion.

We at the Board of Supervisor are busy keeping up on all the bills that effect the county, the schools and the towns. We are constantly engaged with our legislators to give them our insights of how a bill will affect us.

Once again this year there are bills that will have consequences on the schools in our area, I encourage you to keep up with them and voice your opinions with our local legislators. They do want to hear from you, and know of your concerns.

Please know that we are working hard on your behalf, and working diligently to represent your issues.



Finding bills

<https://www.azleg.gov/bills/>

This will give you a short description of a bill, such as: *HB2005 municipal economic development; sale; lease*

By clicking on the bill number on this page, you will get to the “bill history,” which will tell you the sponsor(s), status of bill, votes in committees and more.

It also will allow you to read the bill in its entirety, including revisions that have come about.

Our legislators

District 14 (see map at left) has one senator and two representatives.

[Gail Griffin](#) is our senator. A Republican, she also is the majority whip. She is from Hereford in Cochise County.

Griffin is chairman of the Senate Natural Resources, Energy and Water Committee and is a member of the Government Committee and the Rules Committee.

Clicking on her name above will get you to her page on the Legislature website and another click on that page will pop up a window to send her an email.

District 14’s House members are [Drew John](#) and [Becky A. Nutt](#). Both are Republicans.

John is from Safford and is vice chairman of the House Transportation and Infrastructure Committee and is a member of the Government Committee and the Local and International Affairs Committee.

You can reach his page by clicking on his name above.

Nutt is from Greenlee County. She is a member of three House committees: Education; Land, Agriculture and Rural Affairs; and Local and International Affairs.

You can reach her page by clicking on her name above.

Our representatives’ respective pages also will tell you which bills each has sponsored.

COMMUNITY

Clifton Council Corner

Mayor Felix Callicotte

Code enforcement

The primary mission of the Town of Clifton Police Department and Code Enforcement is to protect the health, safety and general welfare of the public through the administration and uniform enforcement of laws and regulations related to land use, building construction and property maintenance of the town.

Neighborhood complaints have triggered the police department and code enforcement to crack-down of the following: Parking, unpermitted travel trailers and RV's, unpermitted lease of required space, accessory buildings/lots prohibited as living quarters and prohibited use of building or lots.

There has been a rise in public disturbances, disorderly conduct, trespassing, disturbing the peace, nuisances and loitering.

The Police Department and Code Enforcement has been working to make Clifton safe and appealing and although there is a noticeable improvement around town, there is still a lot of work to be done. It is important to contact the Police Department or Code Enforcement with any complaints. We cannot resolve a situation if we are not made aware of the complaint.

With the assistance of town residents, we believe that the town can do a better job of

[Click here to read more](#)

The Greenlee Clarion

Published monthly by

Greenlee County Economic Development
253 Fifth Street | Clifton, Arizona 85533
(928) 865-2072 ext. 202

Ákos Kovach, Editor

Gary Dillard, Graphics Editor

economicdevelopment@co.greenlee.az.us

www.growinggreenlee.org

www.co.greenlee.az.us

Reading Nook News

Global issues in context

By Karen Soohy

We live in a global economy. Decisions made in other parts of the world affect the United States in various ways just as our decisions affect others.

The database that addresses many of these issues is called Global Issues in Context.

The databases that are provided free to all library patrons is provided by the Arizona State Library and your local library.

To find the database links simply go to the Greenlee County Libraries website (www.greenleelibraries.org) and click on the State Database link on the left column.

Global Issues in Context has over 200 topics that you can search. Some of the topics include: Airline Security, Adoption, Weather, Global Warming, Flooding, Food Safety, Nuclear issues, Energy issues, Environmental issues, Obesity, Alcohol Abuse, AIDS/HIV, Oil Spills, Online Identity Management, and many more.

You can simply click on a topic to see the articles and information available or you can do your own search using the Advanced Search Engine.

There is an interactive World Map that you can search individual countries by topic also. You can save and bookmark articles of interest to you so you can go back to them when you like.

If you are an educator there is also a curriculum section to get ideas and information on how to use these global topics in the classroom.

If you enjoy reading blogs, there is also a blog section where many topics are discussed from an individual point of view. There are also current event videos and links to world news that are updated daily.

While you are on the library website, check out the link to Seasoned Times.

While this website is set up for Senior Citizens, there is a lot of valuable information on it for people of all ages. The materials found there are updated monthly.

Library Quote: "Whatever the cost of our libraries, the price is cheap compared to that of an ignorant nation."

~~Walter Cronkite

Upcoming activities

2/15 10-noon, Greenlee Tourism Council, Greenlee Golf Course, York Valley.

2/15 6:30 p.m., Morenci Club, Gila Idol competition.

2/20 8-11 a.m., Greenlee Board of Supervisors meeting, Clifton Annex, BOS Conference Room.

2/28 5:30 p.m., Fairgrounds, Greenlee Chamber of Commerce annual meeting. See page 4 for more information.

3/1 7-8:30 p.m., Simpson Hotel, 116 Main St., Duncan, Riders on the Orphan Train. See page 9 for details.

3/10 8 a.m., Cospers Loop, trash cleanup.

4/14 Javelina Chase / Ghost Mine Rumble. See maps on page 4.

4/21 Greenlee County Health and Science Festival, 10-2, Morenci Community Center.

For more community calendar items, [click here](#).

See Morenci School District calendar at [its website](#).

Hearing set for Gunnison Copper

From The Copper Era

BENSON — A Feb. 27 hearing scheduled by the federal Environmental Protection Agency will seek public comment on issuing the final permit needed to start the Gunnison Copper Project.

Located about 20 miles east of Benson, the project plans to use an underground injection process to recover copper from a 192-acre wellfield immediately south of Interstate 10. The solution captured through “in situ leaching” will be transported to the John-

son Camp Mine, located on the north side of I-10, where an electro-winning process can be used to generate cathode copper.

The Excelsior Mining Corporation, based in Vancouver, British Columbia, Canada, purchased the mine site and the property south of I-10 in 2015 after the operation entered receivership two years earlier under the ownership of Nord Resources Corporation, based in Tucson. Excelsior, which has already obtained two water-related permits from state agencies, has projected that the

Gunnison Copper Project will employ about 120 people and generate an estimated \$2.4 billion in Arizona during its 20 years of operation.

“We look forward to working with the EPA and all stakeholders to ensure our Gunnison Copper Project meets all regulatory requirements,” said Stephen Twyerould, Excelsior’s President and CEO. “The public meeting is a typical part of the permitting process and represents an opportunity for the communities

[click here to read more](#)

Gila Idol Feb. 15

The Gila Valley Idol competition will be held Thursday, Feb. 15, at 6:30 p.m. at the Morenci Club in the Morenci Plaza.

Judges will be 2009 Idol winner Theresa Campbell, 2008 Idol winner Adam Crohn and 2017 Idol winner Darryn Kamae.

Theresa Campbell also will be performing.

Contestants include Sarah McGarish, Jamie Tellez, Natalie Jensen, Brianne McGrath, Bre Hancock, Abigail McGarish, Jared Collins, Gene Willey, Kent Detrick, Joanna McGarish, Roy Vidales, Benjamin Huggins, Rian Kumlien and Kale Fuller.

To sign up, visit <http://mysouthernaz.com/> and look for the Gila Idol link.

Trash cleanup March 10

Gila Watershed Project, BLM and Friends of Frisco are hosting a trash clean-up event on Saturday, March 10.

The cleanup will be on Cosper Loop starting at 8 a.m.

Garden plots available

Greenlee County's Community Garden has plots available!

Here's why you may want consider taking part:

- * The garden plots are automatically watered EVERY DAY. Your plants won't die because you didn't make it to the location just south of FMI's Guest House in Clifton.

- * It is so very satisfying to eat what you grew!

- * If you haven't gardened before, folks will help you know what to plant and how to tend your plants.

- * You may be part of the vibrant Farmers' Market held weekly at the Train Station in Clifton.

- * Community Gardeners are part of fun activities such as hosting the October Pumpkin Patch and Luminarias on Christmas Eve along Park Avenue.

Employer summit

Arizona@Work is partnering with the Small Business Development Center to bring the business community a FREE information session to learn about the programs available to business owners through Arizona@Work.

The summit will cover:

Business Services
Registered Apprenticeship Program
Veterans Services
Financial Coaching Program
Plus more!

It will be held Friday, Feb. 9 from 9-noon at the Lecture Hall, Cochise College Downtown Center, 2600 E Wilcox Drive, Sierra Vista.

[Click here](#) for information.

Health, science festival

Everyone is invited to attend the Greenlee County Health and Science Festival, to be held April 21, from 10-2 at the Morenci Community Center.

This year the Health and Science events of the Festival will happen at the same time.

Please fill out an exhibitor's registration form by April 1 to save a spot.



Fireside Lectures 2018

At The Simpson Hotel, 116 Main Street, Duncan, Arizona

A piece of Clifton's history brought to life.

Riders on the Orphan Train

Story-telling • Live music • Video



Alison Moore & Phil Lancaster

**Thursday Evening
March 1, 2018
7:00 to 8:30 p.m.
116 Main Street, Duncan**

*Seating will be first-come, first-served.
Donations to help the artists with their travel costs
will be gratefully accepted.*

www.ridersontheorphantrain.org



All are welcome. Please join us.