

Greenlee Clarion

November 2019

Vol. 6, No. 11



**Honoring Veterans
Cody Denogean walk
Woman of the Year**

Marx Hall Veterans Memorial Enc.
of The Citizens Of Greenlee County
Dedicated
This Memorial Is Honor Of The
Our County Veterans Who
WWI
Viet - Nam
Let Us Forget
Say Good Night To
Remembered By James Smith

LET EVERY NATION KNOW
WHETHER IT WISHES US
WELL OR ILL THAT WE
SHALL PAY ANY PRICE
BEAR ANY BURDEN, MEET
ANY HARDHIP SUPPLY

The Greenlee Clarion

Published monthly by
Greenlee County Economic Development
253 Fifth Street | Clifton, Arizona 85533
(928) 865-2072 ext. 202
Ákos Kovach, Editor
Gary Dillard, Graphics Editor

akovach@greenlee.az.gov
www.growinggreenlee.org
www.greenlee.az.gov

Greenlee County social media

To keep track of activities going on in Greenlee County, you will want to follow our pages on Facebook and other social media. Follow, like, comment and add to the conversation.

Facebook pages:

[Greenlee Clarion](#)

[Growing Greenlee](#)

[Greenlee County](#)

[Greenlee County Tourism](#)

[Greenlee County Natural Wonders](#)

Other social media

[GreenleeAz2020](#) (Instagram)

[GrowingGreenlee](#) (Twitter)

December Clarion

Deadline for submitting articles for the December Clarion is November 27. The issue will be published on December 3.

Homebuyer education

By Ákos Kovach

“Homebuyer education” – two words that strike fear, confusion and strange looks when ever they are used in a mixed audience.

But the truth is many people want to or dream about owning their own home. Home buying can be fun and not-at-all intimidating if you follow a few simple steps.

So let’s give a true overview. Buying a home is fun. Buying a home is like starting a business. You need a plan. (How big of a home? How many bedrooms? How many bathrooms?)

Next you need a budget. On your current income how much can you afford to pay each month for a mortgage? Generally a mortgage payment should be less than 25% of your monthly income but can be as high as 28%.

So if you earn \$3,500 a month the 25% equals \$875.00. 28% equals \$980.00. What does this mean? In rough terms a \$920.00 monthly payment will buy you a \$150,000 mortgage. A \$1,213 payment will buy a \$195,000 mortgage.

What does a mortgage payment include? Principle. Interest. Taxes. Insurance – often referred to as PITI.

After this the mortgage waters get a little muddy. Your interest rate will depend on your credit history, credit score, monthly income, current debt load and how much (if any) money you have for a down payment.

The good news is there are lots of mortgage loan options out there, and for Greenlee County purchases always ask about USDA Rural Development Home Loans.

Here is a simple way to calculate how much money you should have in saving or in an account you can readily access: add up all your monthly expenses. Let’s say your car, rent, food, utilities, gas, clothes etc. equals \$2,300. Ideally you should have three times that much in a cash account, or in other

Please turn to page 8

On the Covers

Greenlee County residents have turned out in great numbers over the years to serve their country. The symbolism can be seen overlooking Clifton, on Mares Bluff, and at Veterans Park.

Jackie Norton

Business award winner and 40th anniversary

Not just anyone can make a “go” in the café business, but Jackie Norton can tell you how she did it: “lots of hard work, long nights and early mornings.”

This local restaurant super star recently celebrated her 40th anniversary as one of the communities longest-surviving businesses – through floods, strikes, personal hardships – she has been through it all.

Jackie, whose homemade pies are famous and so sought-after you need to order your Thanksgiving pies NOW!

But that is not all. The owner of PJs Restaurant was also awarded the 2019 Gila Valley Small Business Woman of the Year Award for Greenlee County!

Up against some pretty terrific competition, Jackie’s business ethics, consistently great food



Jackie Norton receiving her Small Business Woman of the Year award from Charmaine Chidester of EAC’s Small Business Development Center during ceremonies in October.

and her friendly staff helped her win the coveted award, plus a check for \$1,000 and a \$500 radio ad campaign from KAT Kountry 94.5.

Jackie accepted her award gra-

ciously, and said she could not have done it without her staff and of course her faithful patrons. She thanked everyone — some twice, because that’s how Jackie is, kind and considerate.



Colors of Copper again a success

For the seventh year in a row volunteers put together a first class Art Show, with wine tasting, music, food and on the third day — for the first time — a beer garden.

It was quite the show, a bigger challenge than many thought but most of all a big success once again for this well-recognized event.

There were 31 artists who submitted art works for the show including jewelry, sculpture, pottery, carvings, oils, acrylics and leathercraft. Literally there was an art form to touch the soul of each guest.

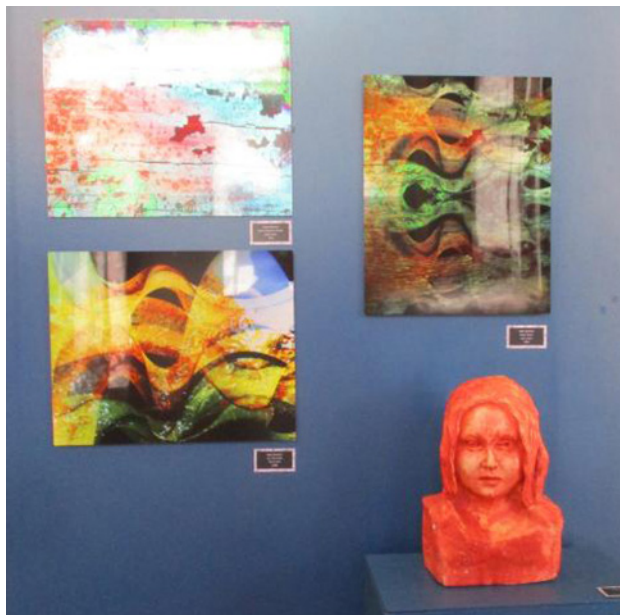
Some were light hearted, others deeper, darker and more thought provoking. Modern, Realism, Painterly, Expressionism,



Abstract and Still Life. The show started a day early this year, on Friday Nov 1, and ended on Sunday Nov 3.

A [podcast interview](#) of two of the main organizers, Jon Stacy & Barbara Ahmann can be heard on the Growing Greenlee website.

Plan for next year to be bigger – and always the first weekend of November.



Finding your 1st customer

“8 ways to find your first customer” is the title of a webinar being presented Nov. 14 by the SBDC at EAC.

It’s about learning smart strategies to identify and attract those critical first customers.

It is free, it’s online and it will be held over the lunch hour, from noon to 1 p.m., on Thursday, Nov. 14.

No matter what industry you’re in, every startup business owner has the same burning question: “How will I get my first customer?”

Kevin Peck, director at the EAC Small Business Development Center will discuss:

- > How to look for referrals, including neighbors, former co-workers, etc.;
- > The importance of teaming up with other business owners and working your network;
- > Spreading the word on social media and building an online presence; and
- > Why you want to attend industry events and show off your product.

[Click here to register.](#)

Micro-loans in Greenlee

More local businesses than ever can now participate in a micro-loan program from Local First Arizona Foundation and the Freeport-McMoRan Foundation thanks to additional grant funding of \$50,000 from the Greenlee County Community Investment Fund as well as an added \$30,000 from the Graham County Community Investment Fund.

In addition, the City of Safford has contributed \$100,000 to help support businesses in Safford. City Manager, Horatio Skeete, said the program so far has demonstrated “remarkable returns for economic development in our community.” Citing that the program has loaned out \$95,000 and can track 5 new jobs created so far, with more potentially to come.

This additional funding will enable more local businesses in Southeastern Arizona to seek much-needed loans in smaller amounts and at reasonable interest rates.

“Added grant dollars from Community Investment Funds, in both Graham and Greenlee Counties, directly relate to a priority need that community members have been vocal about for some time: economic diversification,” said Tracy Bame, Director-Social Responsibility and Community Development and President of the Freeport-McMoRan Foundation.

“Expanding the Micro-loan program provides immediate resources to support growth of existing enterprises as well as the enhanced skills and opportunities individuals need to reach their full potential and play a progressively active role in the prosperity of their own communities.”

The Micro-loan Program was launched in Graham County in 2018 through a partnership between Freeport-McMoRan Foundation and Local First Arizona Foundation, with additional support provided by Vitalyst Health Foundation and Community Investment Corporation.

The goal of the program is to invest in existing local business-

[click here to read more](#)

Medicare open enrollment

The 2020 Open Enrollment Period began on Nov. 1 and will end Dec. 15.

Yes it is all pretty confusing. Medicare Advantage Plans, Medigap, Medicare Supplementals – where can you go to get straight answers?

This is a fast overview:

Part A provides inpatient/hospital coverage.

Part B provides outpatient/medical coverage.

Part C offers an alternate way to receive your Medicare benefits (see below for more information).

Part D provides prescription drug coverage.

Part F is to supplement insurance for Medicare. The correct term is Plan F, but some people will refer to it as Medicare Part F. You must be enrolled in Medicare Part A and Part B to enroll.

Part G, also called Medigap Plan G, is an increasingly popular supplement for several reasons. First, Plan G covers each of the gaps in Medicare except for the annual Part B deductible.

Part H is a lot like Plan C. It covers the Basic Benefits that include hospital coinsurance, the Medicare Part B coinsurance which is generally 20% of outpatient expenses, 365 additional days of hospitalization coverage, and additional blood coverage.

Where to get real help? On the phone: 1-800-MEDICARE (1-800-633-4227)

Online: <https://www.cms.gov/Outreach-and-Education/Reach-Out/Find-tools-to-help-you-help-others/Medicare-Open-Enrollment.html> and <https://www.ssa.gov/benefits/medicare/>

[click here to read more](#)



Great Duck Race is coming

Simply expressed – this new organization has formed under the wings of the Greenlee County Tourism Council and the Gila Watershed Partnership.

While we may not have the same water features as San Antonio, we have a lot of shoreline, birding, trails, fishing, kayaking, tubing and other opportunities to showcase.

There are certain waterway rules, and proper uses we must investigate, plus due diligence for events and activities. But in the meantime we are raising money to pay for all those things and start setting money aside for special events, parties and activities along the river.

This is why we are hosting the

The Great Duck Race

proceeds to benefit *Frisco Float & Trail*

1 duck \$10
or
3 ducks for
\$25



Grand prize – River Kayak with paddle and safety vest



The Greenlee County Tourism Council
and

The Gila Watershed Partnership

Have partnered to help create recreational opportunities along the San Francisco River as it passes through Clifton and later meets the Gila River.

Buy tickets online here with PayPal: QR Code

or copy / paste link below:



https://www.paypal.com/cgi-bin/webscr?cmd=s-xclick&hosted_button_id=UCEE7NHVT4NSY&source=url

Or
In person by cash or check
Or
via Square (credit card swipe)

Birding, hiking, off-road biking, fishing, camping
Kayaking, tubing, tours, etc. call (480) 745-0637 or 928-865-4762

Great Duck Race when,
Tickets are already on sale and

the top prize will be a new Kayak with paddle and safety harness!

Closures on US 60 have started

Full closures of US 60 at Pinto Creek began Nov. 7.

Motorists who use US 60 between Miami and Superior should expect long delays and a lengthy detour starting Thursday, Nov. 7, when the Pinto Creek Bridge closes to all traffic for rock blasting.

US 60 will be closed on Tuesdays and Thursdays between 9 a.m. and 1 p.m. for about six weeks. Crews will reopen the road prior to 1 p.m. if it is safe

and passable.

All eastbound vehicles will be redirected at State Route 177 in Superior, and westbound vehicles will be redirected at the west end of Miami. Traffic will not be allowed to queue at the closure locations.

Motorists with a destination between SR 177 and Top-of-the-World west of Pinto Creek or between Miami and Pinto Valley Mine Road east of Pinto Creek will be allowed to pass, however

no vehicles will be allowed between Top-of-the-World and Pinto Valley Mine Road.

During the closures, traffic will be detoured to SR 177 in Superior and SR 77 in Globe.

The detour includes a 10% grade and will significantly increase travel time.

Because of the potential for long delays, motorists may want to plan trips before or after the full closures.

Census is coming upon us rapidly

“Mostly what we are doing is raising awareness and looking for actual census takers”, said Akos Kovach.

The fact that the Census is coming up very soon (March through July 2020) means that we must educate our audience, assure them the data is confidential and encourage everyone to participate.

Last census lots of children were not counted, this meant a reduction in the level of federal funds to schools, for roadways and many other areas of funding. Senior citizens are also often left off the census, this year a special effort will be undertaken to provide them with phones to call in their survey, laptops to fill out the questions online, or paper forms they can fill out and mail back.

Our biggest and most active partner so far has been SEACAP for which we are truly grateful and thankful. They have shown up to every meeting, actively participated and have been totally supportive of this Complete Count Committee’s success and goals. But if there was a separate award to hand out, it would go to Espie Castenda.

She shows up on her day off, works on her day off and does everything she can to help the Greenlee County CCC Team get the word out.

If anyone has questions about the census please call 928-865-4762.

Children, seniors undercounted in past census.



Espie Castenada and Nancy Siani worked the Census 2020 booth on Saturday.



Espie Castenada, left, and Karen Frye helped with the booth on Friday, pointing to the basic message, that the numbers counted in next year’s Census are critical to Greenlee County’s future.

2nd Women's Career Expo set

By Erica Gonzalez

Greenlee County would like to invite all ladies of all ages to take part in the Second Annual Women's Career Expo.

Similar to last year, the Second Annual Women's Career Expo will be held on a Saturday to help working moms, young ladies still in school, and other professional women a chance to participate.

It will be held Saturday, January 18, 2020 from 9-1 at 550 N. Coronado Blvd. Clifton Arizona (Bingo Hall).

This event is designed to encourage women to come together and feel inspired, uplifted and empowered.

The event is devoted to personal growth by offering networking opportunities for connections personally and professionally. We will cover many topics such as business opportunities, healthy living, landing a job while at the Expo, access to capital for entrepreneurs and much more.

We will present you with introductions to organizations who want to help you build a stronger community. We will have information on resources available and around our amazing community plus businesses on site ready to hire you!

If you are returning to work, looking for work, want information to start or grow your own business, or simply want to get out and network, this is the event for you.

Do not miss out on this opportunity. Attendees who register by January 9, 2020 will enjoy a light lunch, lots of door prizes, women's outdoor apparel and lots more. The event will start on

time, and end on time – but we also have some special break-out sessions that will be available after the close of the event for those who wish to go one-on-one with speakers or special reasons.

For more information please

contact Erica Gonzalez, Greenlee County Economic Development Coordinator Assistant at 928-865-4762 or by e-mail at egonzalez@greenlee.az.gov.

(Also see the flyer on the next page of this issue.)

Homebuyer education . . .

continued from page 2

words, \$6,900.

But let's get real – homebuying – getting ready to buy a home is a daunting process, best done face-to-face or at least on the phone. No judgements. No condemnations. Just a healthy question and answer session to help you figure out if you should buy a home now or not.

But also, how to prepare yourself to buy a home and not just be 'a renter'. There is NOTHING wrong with being a renter, but you do not earn equity as a renter. Equity means ownership. That ownership has a value.

So if you buy a home for \$95,000. But the appraised value is 114,000 you have 19,000 in equity – or value. It is like having money in the bank.

For more about home ownership give us a call. We can answer your questions but we can also put you in contact with professionals who keep your questions, your financial profile totally confidential.

Don't put it off. You could be a home owner in less than 90 days!

<https://www.bankrate.com/calculators/mortgages/mortgage-calculator.aspx>

◆ 9-9:30 Registration/T-shirts
◆ 9:30-10 Testimonials/Balloon release
◆ 10-11 Walk

◆ 2.1 mile low impact walk
◆ Lunch provided for walk participants
◆ 50/50 raffle for scholarship

Don't write your ending...
3rd Annual
Coty Denogean Memorial
Suicide Awareness Walk
Nov 9th 9am

Morenci High School football field
Contact: Ron Campbell (928) 965-0949 or
Theresa Campbell (602) 762-0511

Greenlee County
Presents:
2nd Annual
Women's Career Expo

JANUARY 18, 2020

9:00 a.m.—1:00 p.m.

Registration Opens at 8:30 a.m.

550 N. Coronado Blvd., Clifton, AZ 85533

-  Guest Speakers
-  Small Business Information
-  Resume Building
-  Vendor Exhibits
-  Employers on site ready to hire
-  Interview Techniques
-  Fashion Show
-  Light Meal

CONTACT INFORMATION

Erica Gonzalez at 928-865-4762

egonzalez@greenlee.az.gov

 And Much More...



SOUTHEASTERN ARIZONA

A proud partner of the americanjobcenter network



Training for caregivers

Training for Caregivers, through a peer-led support group, will get under way Nov. 21.

It is being facilitated by the Area Agency on Aging.

The Family Caregiver Support Program is for unpaid family caregivers and interested individuals who are seeking caregiving information, support, self-care and empowerment.

The introductory meeting will be Nov. 21 from 4-5 p.m. and beginning Dec. 5, meetings will be held every Thursday from 4-5 p.m. at thrive, a wellness center at Canyon Vista Medical Center in Sierra Vista.

For information, contact Karen Enriquez at 520.432.2528 x221.

Development symposium

A symposium on sustainable economic development will be sponsored by the Arizona Association for Economic Development on Nov. 13 from 9:30-1:15 at Camp Verde.

Among the topics:

- > Sustainable tourism as an economic driver;
- > Regional sustainable economic development activities; and
- > Sustainable economic development in rural Arizona.

For information, visit www.aaed.com/event/Nov13.

Census workshop

A workshop on 2020 Census Data Products: Data Needs and Privacy Considerations will be held in Washington Dec. 11 and

12, but it also will be webcast live.

The planning committee for the Committee on National Statistics (CNSTAT) Workshop on 2020 Census Data Products is calling for input, with the intent of performing the broadest possible sweep of users (and use cases) of decennial census data.

We want and need to hear from prospective users of 2020 Census data products, to inform the Census Bureau's final decision making about the 2020 products.

On October 29, the Census Bureau released a set of "2010 Demonstration Products" — tables comparable to those released as official data products of the 2010 Census, but generated by applying the Census Bureau's new-for-2020 protocol for disclosure avoidance (based on the concept of differential privacy) to raw 2010 census data.

A crosswalk file describes the tables currently planned for release in 2020 and the subset of tables included in the 2010 Demonstration Products. In brief, the Demonstration Products comprise:

- * A complete version of the P.L. 94-171 Redistricting Data Summary File, and

- * A subset of tables from the planned 2020 Demographic and Housing Characteristic (DHC) File, which in turn is meant to cover most of the content of the

2010 Summary File 1. Notable exclusions from the Demonstration Products include tabulations beyond the most top-level race/Hispanic origin codes (including detailed American Indian and Alaska Native affiliation) and tabulations based on within-household composition, for which improved disclosure avoidance protocols have not yet been identified by the Census Bureau.

Again, we want to hear from census data product users, those whose applications of the products are directly covered in the 2010 Demonstration Products as well as those whose are not.

The Workshop on 2020 Census Data Products is organized by the Committee on National Statistics (CNSTAT) of the National Academies of Sciences, Engineering, and Medicine, at the request of the U.S. Census Bureau.

To answer this Call for Input, please email Daniel Cork (dcork@nas.edu). In addition to your brief commentary on your data product use, please include your name and affiliation.

The workshop is open to the public and will be webcast for remote viewing; for planning purposes, [please RSVP here](#). A proceedings will be issued based on the workshop presentations and discussions, and may include additional materials submitted in response to this Call for Input.

Southwestern Communities Coalition

Promoting thriving communities, sustainable growth, a strong economy, sound stewardship of natural resources and protection of property rights.

[Learn more and join](#)

Upcoming Activities

11/9 9 a.m., Coty Denogean Memorial Walk. See page 8 for details.

Don't write your ending...

3rd Annual
Coty Denogean Memorial

11/11 The Graham County Veterans Day ceremony and will begin with a parade down Safford's Main Street, starting at 9:30 a.m. The ceremony, sponsored by American Legion Post No. 32, in front of the Graham County Courthouse, will start at 11.

11/12 noon-5:30, American Legion, Clifton blood drive.

ONE OF THE PREMIER BLOOD DRIVE EVENTS OCCURS RIGHT HERE IN GREENLEE COUNTY.

Need a Blood Drive Coordinator !!!
Call Leslie 928-432-1457

11/19 The Graham County Chamber of Commerce annual meeting, from 7-10 a.m., at the Visitor Center, 921 Thatcher Blvd. in Safford.

11/20 6 p.m. Greenlee Chamber of Commerce mixer, hosted by the Greenlee County Historical Museum on Chase Creek Street in Clifton.



11/23 8-noon, Frisco River Cleanup. Meet at the Clifton RV Park.



11/30 All day. It's Small Business Saturday all throughout Greenlee County. #ShopSmall.

12/3 11 a.m.-9 p.m., Manor House in Safford, Taco Tuesday fund-raiser for Gila Valley Watershed Partnership.

12/7 The Clifton Festival of Lights, with the

theme of A Rock and Roll Christmas, on Chase Creek Street.

12/7-8 The Silver City Holiday Artisan Market, 10-4, Silver City Grant County Chamber of Commerce Conference Center, 3031 Highway 180 East, Silver City.



1/18 Second Annual Women's Career Expo. See pages 8 and 9 for more details.

The Greenlee County Library Systems has scheduled STEAM events for the rest of this school year. For these events, and others sponsored by the libraries at Clifton and Duncan, [click here](#).

For other activities around Greenlee County, check out various articles in this magazine.

Regular events include Farmers Markets in Clifton and Duncan and Every Second Saturday on Chase Creek.

See Morenci School District calendar at [its website](#).



Harvest Festival was lots of fun



There was popcorn, hotdogs, hot chocolate, a kiddy zipline, face painting a costume contest and lots of fun in the stores that participated in this first ever Harvest Festival.

And yes, since it was held on Oct 31 there was a lot of candy. A special photo-opportunity booth was set up and the lines to use was almost as long as the free hot dog line.

The festival was the brainchild of store owners along Chase Creek Street – mostly Blessed & Obsessed, Studio Twenty-two-six, The Apothecary, Chase Creek Marketplace & GloryAnns.

These folks teamed up with the FMI Emergency Response Team to bring the zipline, had a pumpkin carving contest and even made room for a musical chairs game.

Nearby were outdoor musicians, corn hole games and plenty of smiling faces.

It was truly a community event, with many stores and businesses contributing to the trick or treat candy give-away.



