



The First Marine Division Association is an Association where Marines and Sailors who now serve, or who have served, come together as a “Family of Warriors” and share that unexplained Quality that makes us stand apart, known as “Esprit de Corps”.



The 1st Marine Division is the ground combat element of the I Marine Expeditionary Force (I MEF) stationed at Camp Pendleton, California.

While some of the Old Breed Regiments were in existence as early as 1911, the 1st Marine Division was activated on February 1, 1941 aboard the battleship USS Texas (BB-35).

This was the first Division to be formed in U.S. Marine Corps history. Following the outbreak of World War II, the Division sailed to the Southwest Pacific.

On August 7, 1942, the Blue Diamond conducted the initial assault against the Japanese occupied islands of Guadalcanal and Tulagi. After defeating the Japanese in a six month long struggle, which cost over three thousand casualties, the Division moved to Australia for rest and reorganization. It was in Melbourne that the division adopted the Australian folk song "Waltzing Matilda" as its marching song. To this day, 1st Division Marines still ship out to this song being played.



On 14 June 1979, the Anaheim Chapter of the First Marine Division Association received its charter. It was presented to the Chapter and its founder, Bob Wolfenstein by Colonel Mitchell Paige (World War II Medal of Honor Recipient).

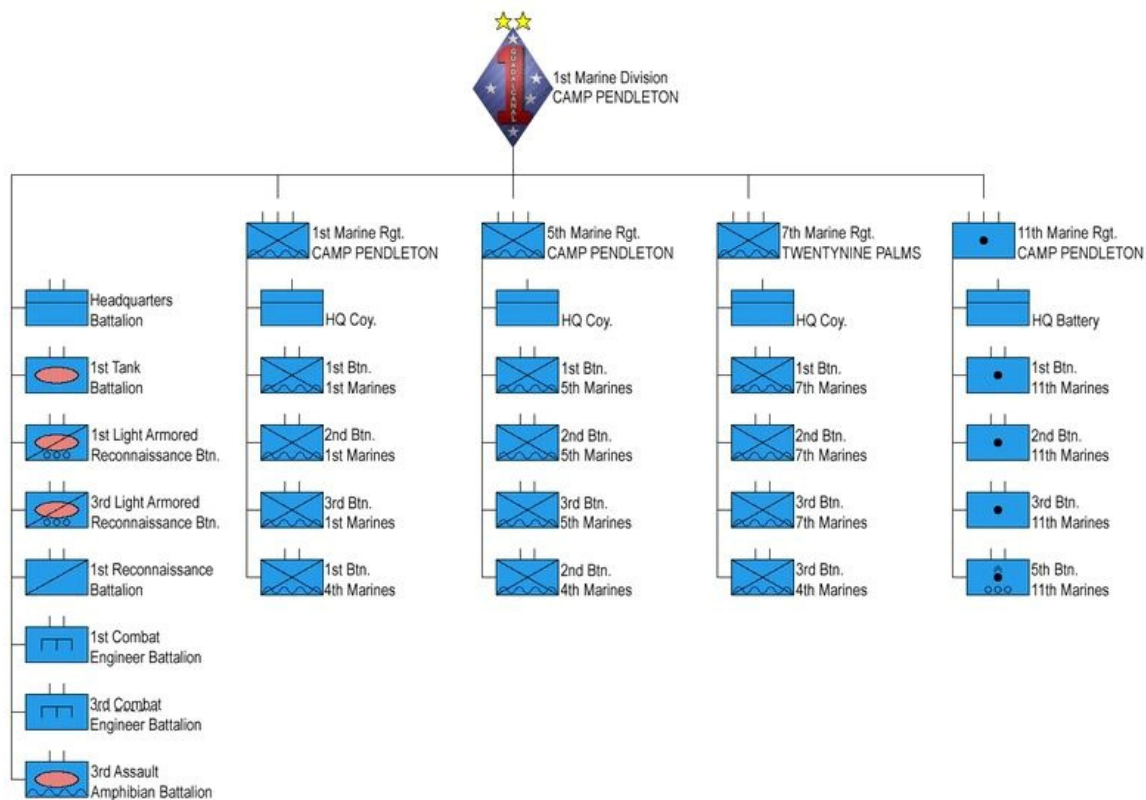
In 1991, the Chapter was officially renamed the "Orange County Chapter". The original charter is on display at the American Legion Post 716 hall in the city of Los Alamitos. This is also the current location where the Chapter meets.

Chapter Membership

The Chapter is a great way for Marines and Sailors of all generations to come together and share their experience, to honor our fellow Marines and Sailors, and to continue Marine Corps traditions.

Membership Eligibility:

Membership in the Orange County California Chapter First Marine Division Association, is open to anyone who at any time honorably served in, is now serving, was attached to, or in support of the 1st Marine Division.



Chapter Membership is open to those who served in the First Marine Division at any time since its formation in 1941; to include those who served with attached or supporting units, such as Corpsman, aviation units, Seabees, ships, other regiments, battalions and companies of the U.S. Marine Corps and any branch within the U.S. Department of Defense. New and annual dues are \$25 (January 1st to December 31st). Attach a copy of your DD-214 or retirement documents (black out social security number).

Chapter Support Members are our valued volunteers. Membership is open to any branch of the military, spouse, parents, siblings, friends and any unaffiliated civilian, who wants to be part of the Chapter. They may attend all meetings and events. The Chapter Support Members do not vote in Chapter elections and do not pay annual dues.

Chapter Legacy Members are surviving family who wish to be part of the Chapter, after the Chapter member has passed away. They may attend all meetings and events. The Legacy Members do not vote in Chapter elections and do not pay annual dues.

Visit our website occfmda.org for meeting dates and events. If you have any questions please contact the Chapter Membership Representative at: info@occfmda.org.

Meeting and mailing address:
OCCCFMDA
 c/o American Legion Post 716
 3252 Florista Street, Los Alamitos, CA 90720