



The First Marine Division Association is an Association where Marines and Sailors who now serve, or who have served, come together as a “Family of Warriors” and share that unexplained Quality that makes us stand apart, known as “Esprit de Corps”.



The 1st Marine Division is the ground combat element of the I Marine Expeditionary Force (I MEF) stationed at Camp Pendleton, California.

While some of the Old Breed Regiments were in existence as early as 1911, the 1st Marine Division was activated on February 1, 1941 aboard the battleship USS Texas (BB-35).

This was the first Division to be formed in U.S. Marine Corps history. Following the outbreak of World War II, the Division sailed to the Southwest Pacific.

On August 7, 1942, the Blue Diamond conducted the initial assault against the Japanese occupied islands of Guadalcanal and Tulagi. After defeating the Japanese in a six month long struggle, which cost over three thousand casualties, the Division moved to Australia for rest and reorganization. It was in Melbourne that the division adopted the Australian folk song "Waltzing Matilda" as its marching song. To this day, 1st Division Marines still ship out to this song being played.



On 14 June 1979, the Anaheim Chapter of the First Marine Division Association received its charter. It was presented to the Chapter and its founder, Bob Wolfenstein by Colonel Mitchell Paige (World War II Medal of Honor Recipient).

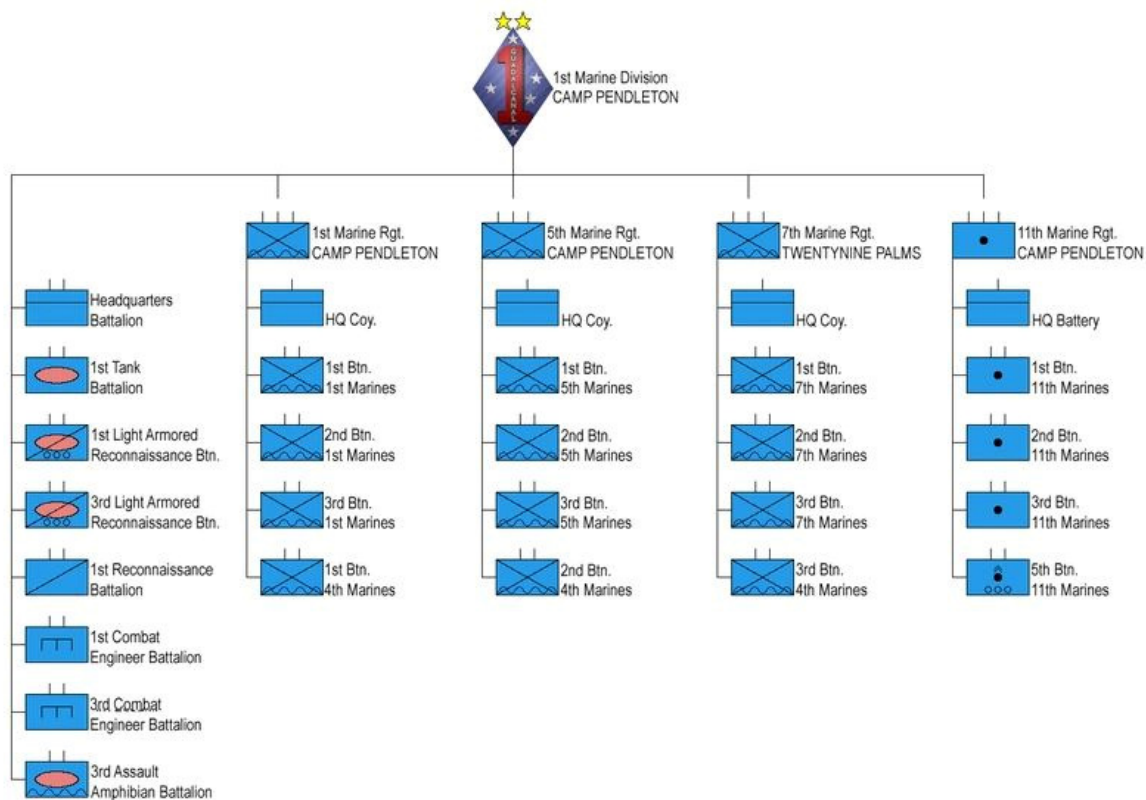
In 1991, the Chapter was officially renamed the "Orange County Chapter". The original charter is on display at the American Legion Post 716 hall in the city of Los Alamitos. This is also the current location where the Chapter meets.

Chapter Membership

The Chapter is a great way for Marines and Sailors of all generations to come together and share their experience, to honor our fellow Marines and Sailors, and to continue Marine Corps traditions.

Membership Eligibility:

Membership in the Orange County California Chapter First Marine Division Association, is open to anyone who at any time honorably served in, is now serving, was attached to, or in support of the 1st Marine Division.



Chapter Membership

Chapter Membership is open to those who served in the 1st Marine Division at any time since its formation in 1941, to include those serving with attached or supporting units, such as Corpsman, aviation units, Seabees, ships, other regiments, battalions and companies.

Join the Orange County, California Chapter First Marine Division Association (OCCCFMDA) by submitting an application and annual dues of \$25 (January 1st to December 31st).

Chapter Support

Chapter Support Members are our valued volunteers; membership is open to anyone, civilian, Military, Veterans, spouse, siblings, parents, friends, etc. who want to be part of the Chapter. They are welcomed to attend our meetings and all events. Become a Support member for FREE by completing the OCCCFMDA Membership application.

Chapter Legacy Members

Chapter Legacy Members are family members of our Chapter members who have passed away; and wish to continue being part of the Chapter. Become a Chapter Legacy member for FREE by completing the OCCCFMDA Membership application.

Visit our website occcfmda.org for meeting dates and events. If you have any questions please contact the Chapter Membership Representative: info@occcfmda.org.

Meeting and mailing address:

OCCCFMDA

c/o American Legion Post 716, 3252 Florista Street, Los Alamitos, CA 90720