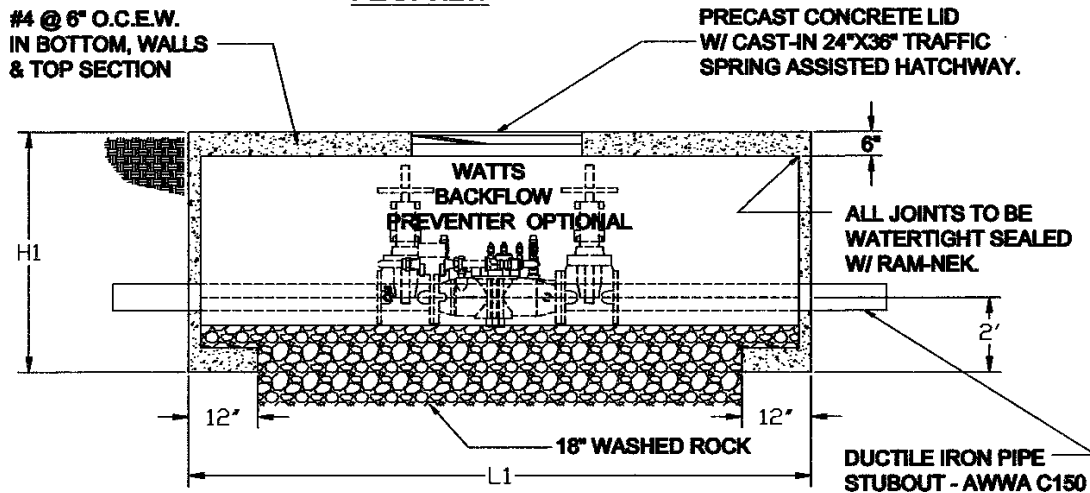


NOTE:
WATTS BACKFLOW
PREVENTER
ASSEMBLY PROVIDED
OR VAULT ONLY

PLAN VIEW



ELEVATION

NOTE:
WATTS BACKFLOW PREVENTER
ASSEMBLY PROVIDED OR
VAULT ONLY

MODEL	SIZE	L1	W1	H1	TRAFFIC HATCHWAY	WEIGHT LBS
SPCP BPA4	4"	8'-1.25"	5'-1"	6'-0"	24"x36"	10,200
SPCP BPA6	6"	8'-1.25"	5'-1"	6'-0"	24"x36"	15,725
SPCP BPA8L	8"	11'-6.25"	5'-1"	6'-0"	24"x36"	24,975
SPCP BPA8	8"	11'-6.25"	5'-1.5"	7'-0"	24"x36"	24,975
SPCP BPA10L	10"	13'-0"	5'-1.5"	6'-0.5"	24"x36"	30,075
SPCP BPA10	10"	13'-0"	5'-1.5"	7'-0.5"	24"x36"	30,075

SPECIFICATION:

CONCRETE: Class 1 concrete with design strength of 4500 PSI at 28 days. Unit is of monolithic construction at floor and first stage of wall sectional rise to required depth.

REINFORCEMENT: Grade 60 reinforced with steel rebar conforming to ASTM A615 on required centers or equal.

HATCHWAY: 1/4" Aluminum diamond plate cover, with 1/4" extruded aluminum frame. Hatch to be furnished with 316 Stainless Steel snap lock & brass hinges.

ENGINEERING DATA
The backflow assembly shall be factory assembled in vault & hydrostatically tested prior to delivery. Field excavation & preparation shall be complete prior to delivery. Pipes, valves and fittings of the assembly shall be approved by one or more of the following associations: AWWA, UL, UPC, ASSE, & FM.

PROJECT:

CUSTOMER:

ARCHITECT:

ENGINEER:

ORDER #:

DATE:

PRECON Precast Concrete Products

6868 FM 730 S. AZLE, TX 76020

817.448.9718 PH

817.448.9886 FX

frank@preconprecast.com

SCALE: NTS

DATE: JAN. 2009