

Description:

200 Gallon Sand Trap

Note:

SPECIFICATIONS:

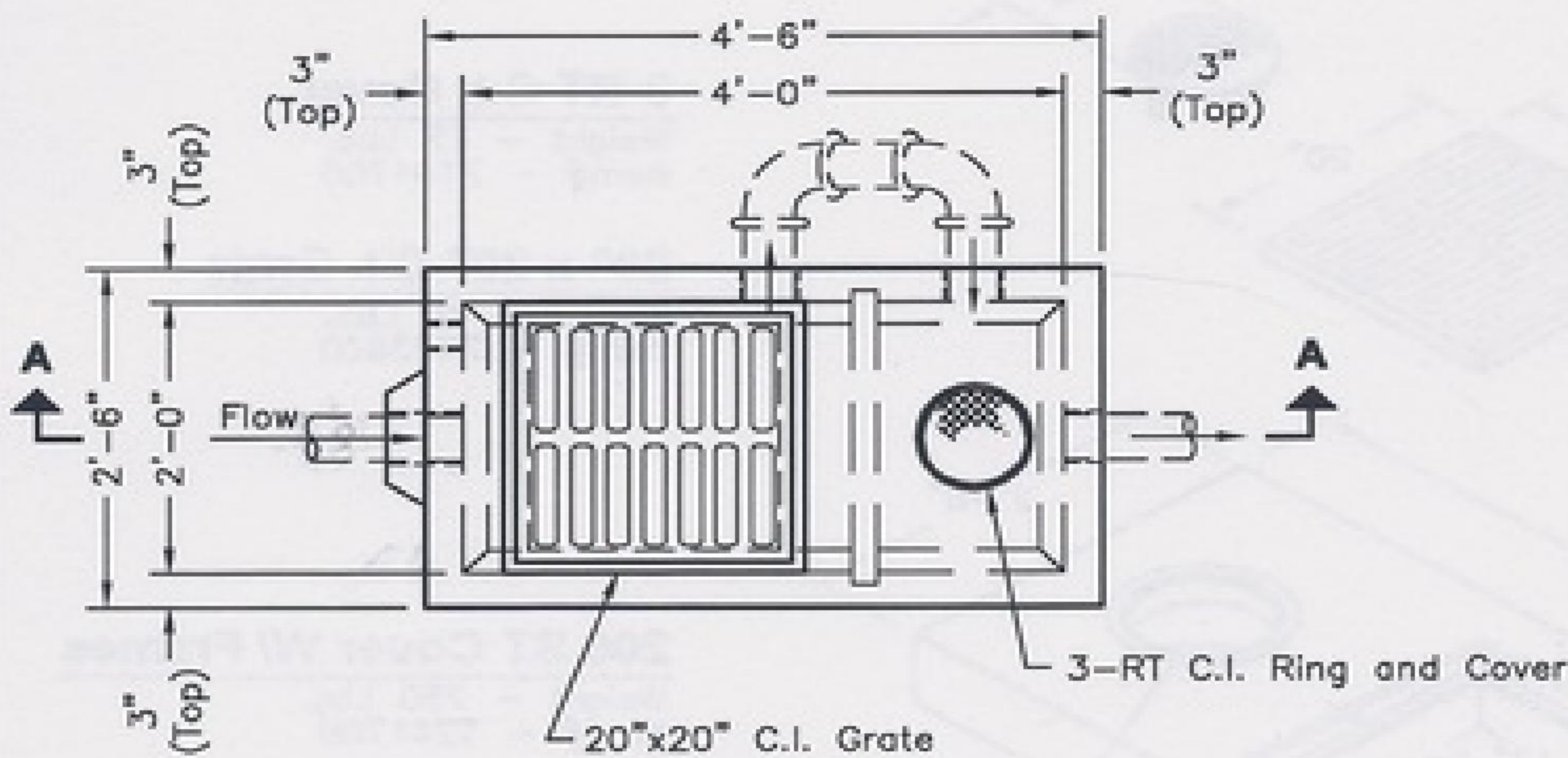
1. Concrete: Has a Design Strength of 5,000 psi at 28 Days.
2. Steel Reinforcement: ASTM A-615, Grade 60 or ASTM A-497 Welded Wire Fabric.
3. Loading: Designed for H2O Loading.
4. C.I. Castings: ASTM A48, Class 30/35.

GENERAL NOTES:

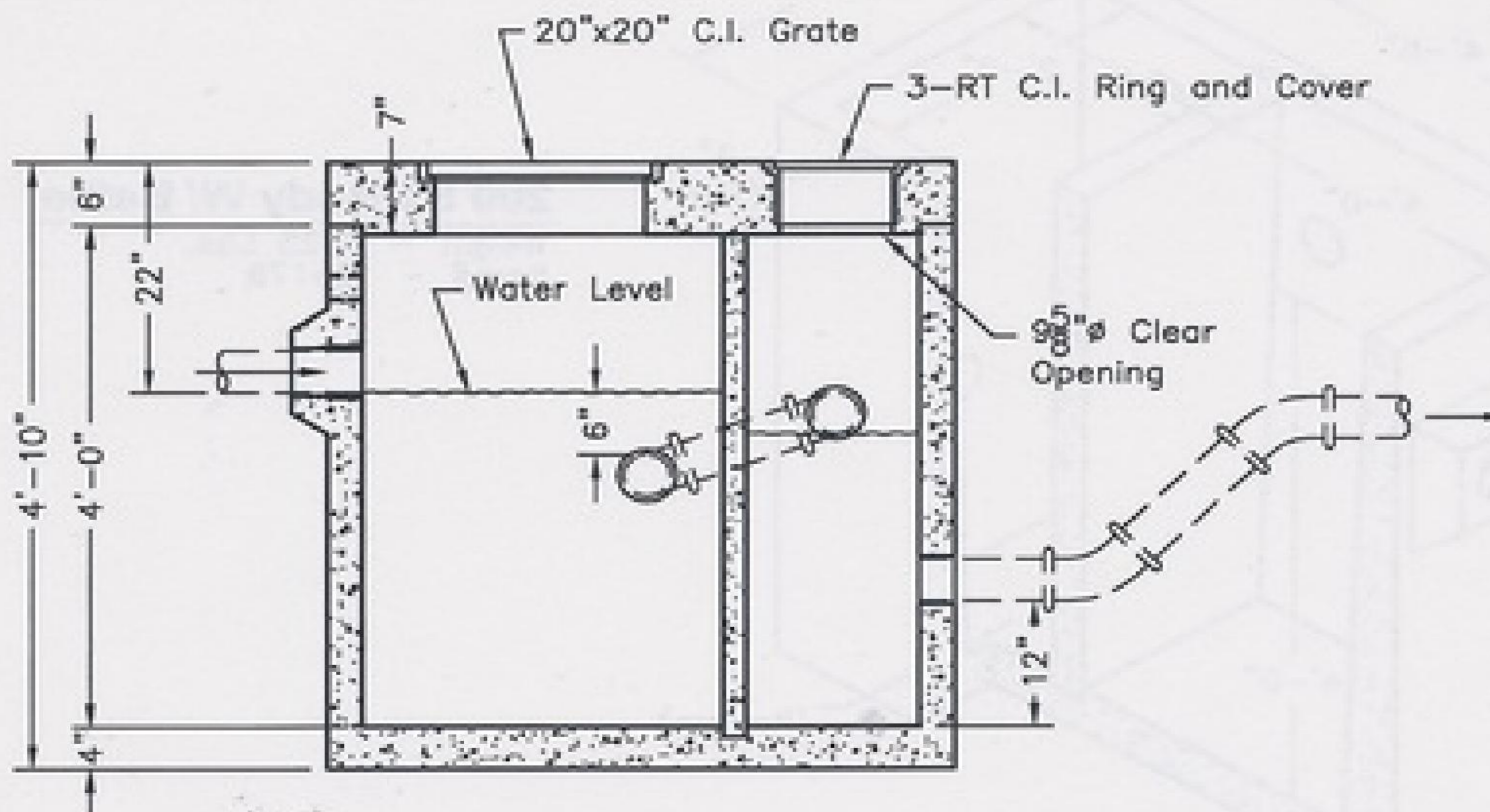
1. Unit Comes with Interior Inflow Piping Installed.

FEATURES:

- 4"ø P.V.C. Double Hub Inlet Furnished.
- 4"ø P.V.C. Half Hub Outlet Furnished.



PLAN VIEW



SECTION A-A

<p>File Name: 200galsandtrap.pdf</p>	<p>Approved For Production</p>	<p>Authorized By</p>
	<p>Date:</p>	<p>Print:</p>
	<p>Job Title:</p>	<p>Sign:</p>