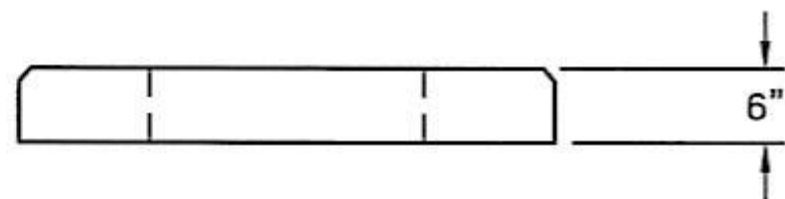
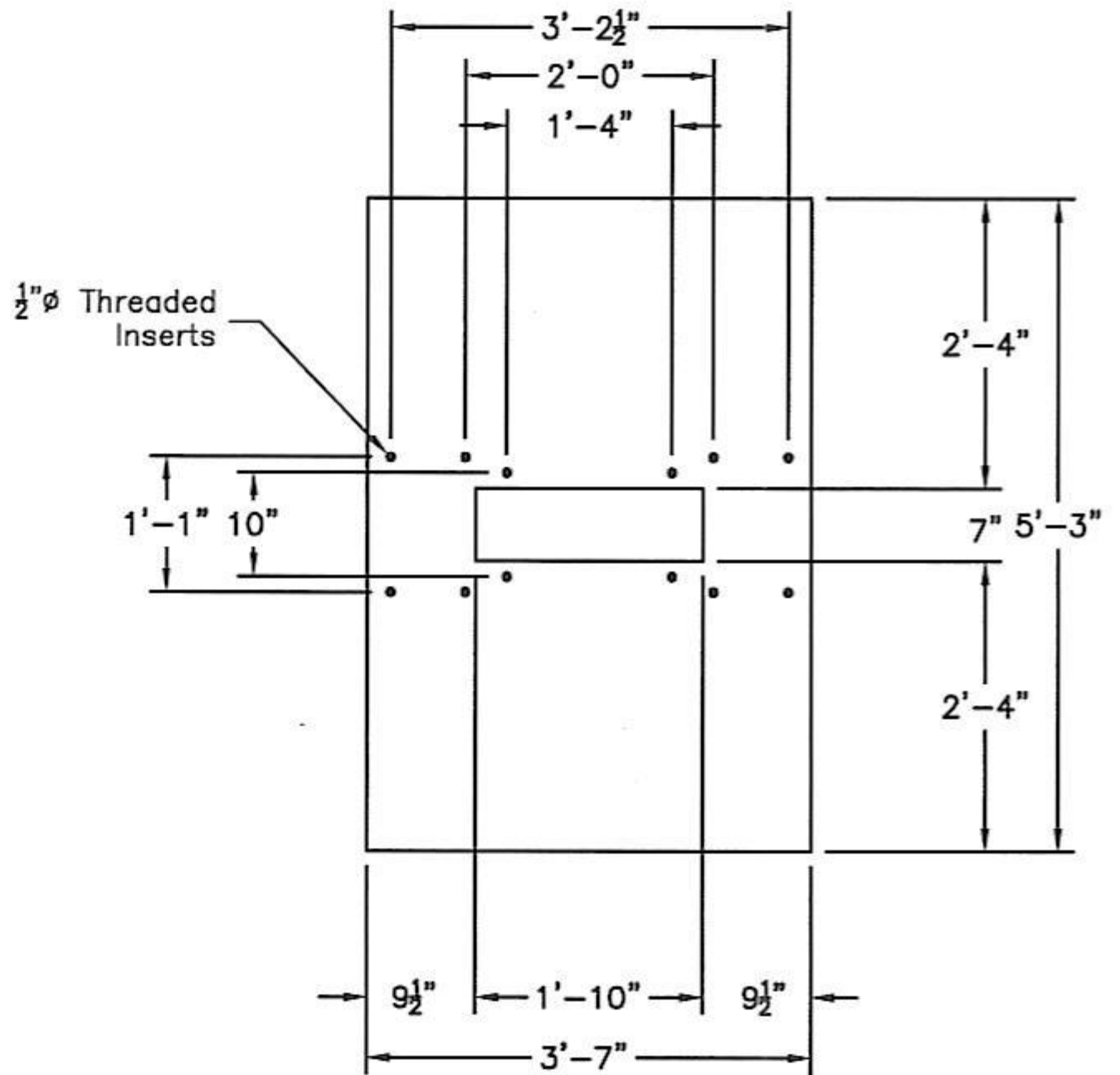
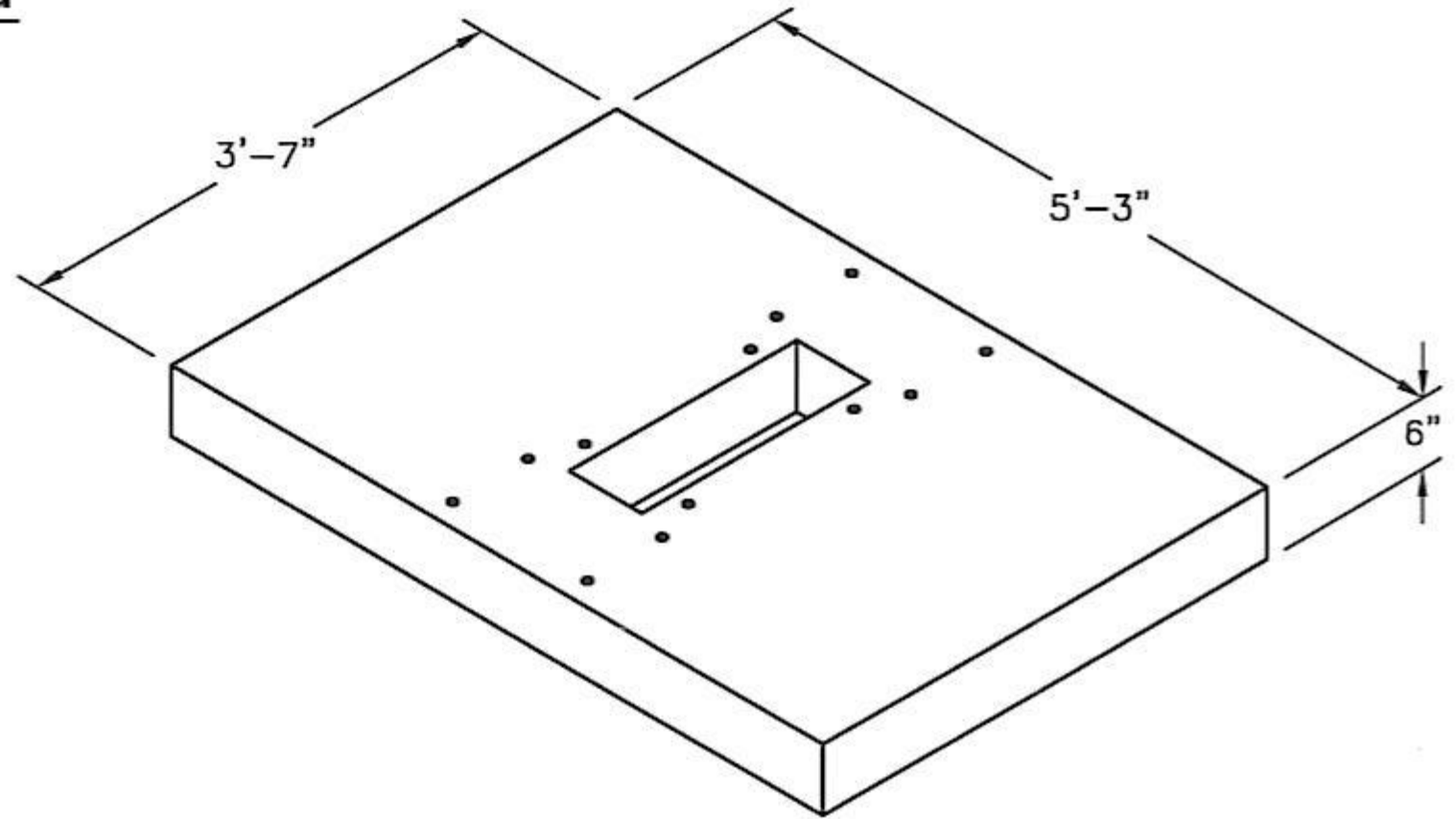


# 43"x63" Concrete Pad

Weight - 1,325 lbs.



### SPECIFICATIONS:

1. Concrete: Concrete Has a Design Strength of 5000 PSI at 28 Days.
2. Steel Reinforcement: ASTM A-615 Grade 60
3. Loading: Designed for H-20 Loading.

PRECON Precast, LLC  
Pre-Cast Concrete Products

**3'-7" x 6'-3" x 6"**  
**CONCRETE BASE PAD**