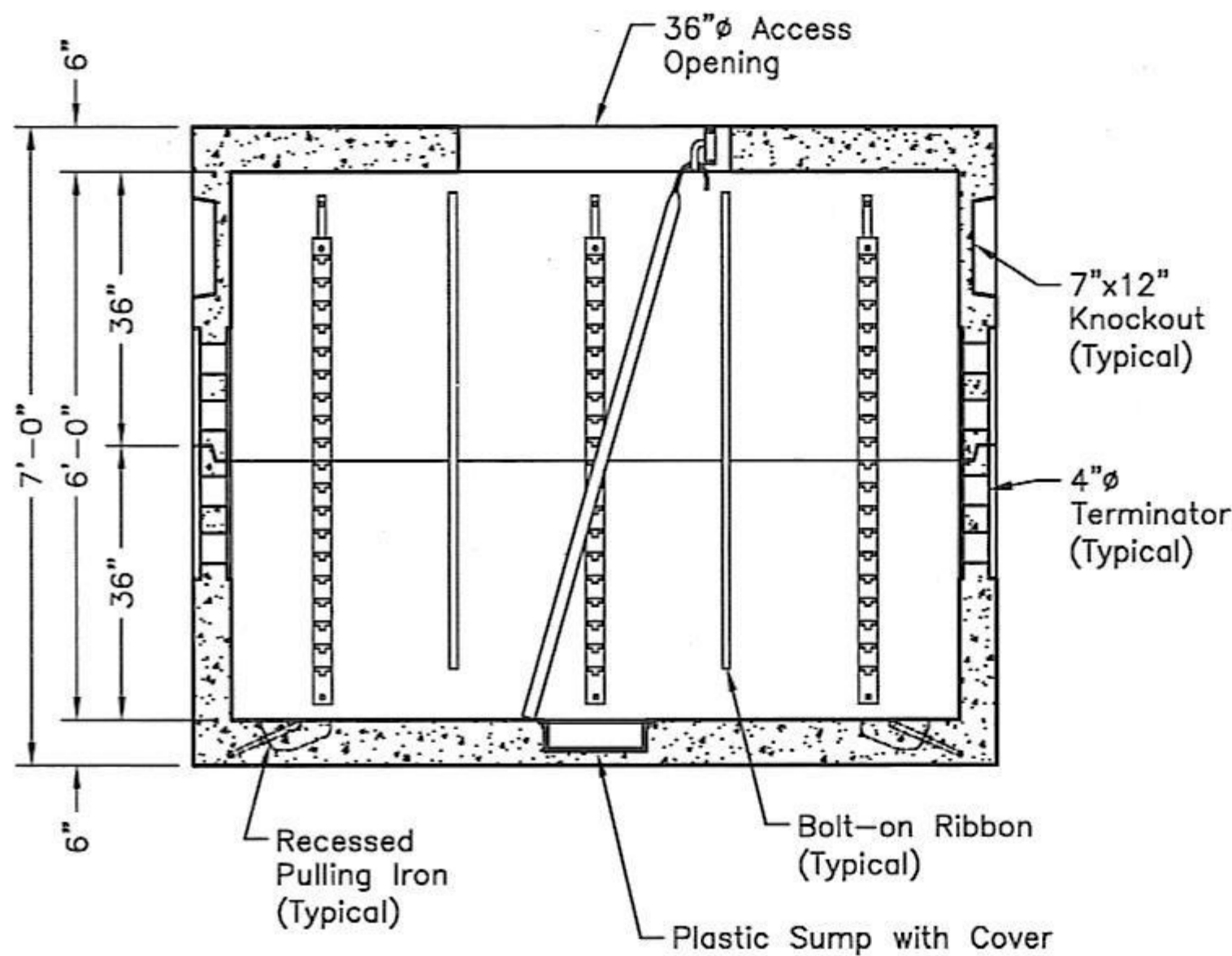


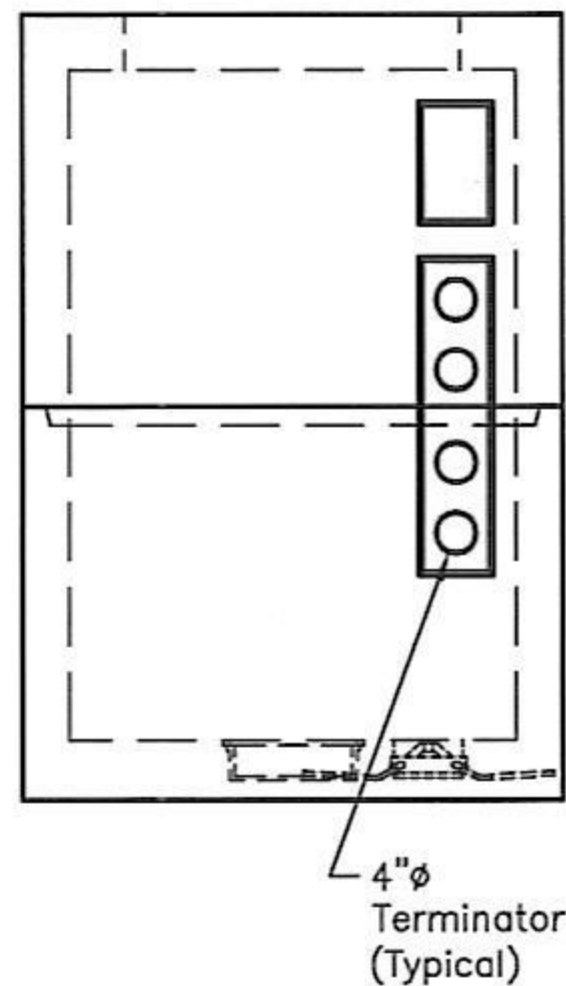
PLAN VIEW

SPECIFICATIONS:

1. Concrete: Has a Design Strength of 5,000 psi at 28 Days.
2. Steel Reinforcement: ASTM A-615, Grade 60.
3. Loading: Designed for H20 Loading.



SECTION A-A



ELEVATION B-B

SCALE: 3/8" = 1'-0"

ITEM I.D. #-516902

PRECON Precast, LLC
Pre-cast Concrete Products

4'-0" x 8'-0" x 6'-0" I.D.
VERIZON Splice Box