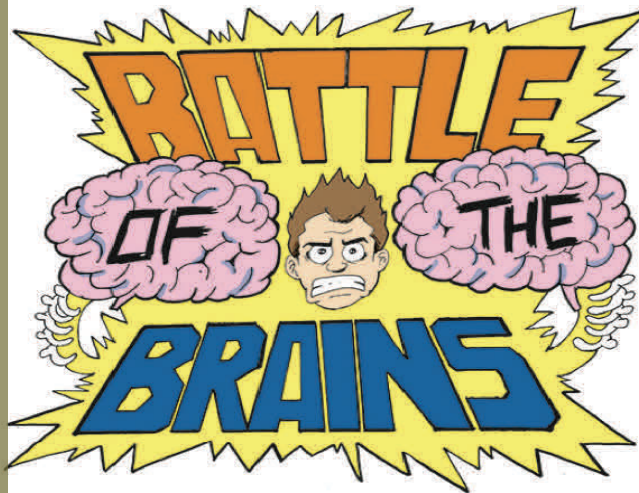


# Tri-County SUPER HEAT ASHRAE

American Society of Heating, Refrigeration, and Air-Conditioning Engineers

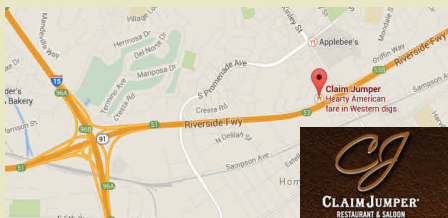
## IN THIS ISSUE...

ASHRAE's Core Values	1
Call for Business Cards	2
Meeting Preview	3
"Trivia Night"	
November Tour	4
December Joint Meeting	5
Priceless Pictures	6
CCP Student Branch Events	7
Job Opportunities	8
Partial Roster	9



## MEETING INFORMATION

**Date:** January 19, 2016  
**Location:** Claim Jumper Restaurant, Corona  
**Social Hour:** 6:00-7:00  
**Dinner and Program:** 7:00  
**Cost:** \$40



We look forward to seeing you again at our next meeting. Claim Jumper Restaurant is located on 380 McKinley Street in Corona, near the 15 and 91 freeway interchange. Please e-mail Felix at [ashraetricounty@gmail.com](mailto:ashraetricounty@gmail.com) to reserve your spot for the upcoming meeting.

Claim Jumper Restaurant  
 380 McKinley Street, Corona

## ASHRAE'S CORE VALUES

As we get set to the end of our 2015-2016 Tri-County ASHRAE season, let's take a moment to review ASHRAE's core values...

### Excellence

ASHRAE education, technical information and all other activities and products will always reflect the best practices that lead our industry. We strive for continuous improvement and innovation in all our practices and products.

### Commitment

ASHRAE and its members are passionate about serving the built environment, creating value, and recognizing the accomplishments of others.

### Integrity

ASHRAE is committed to the highest ethical standards. We work transparently, observing essential requirements for due process and peer reviews to assure our members and stakeholders that we do the right things the right way.

### Collaboration

ASHRAE seeks and embraces collaborative efforts with organizations, agencies, and individuals sharing our commitment to sustainable built environments.

### Volunteerism

Members lead ASHRAE at every level, serving ASHRAE and helping ASHRAE serve society.

NOTE: Statements made in this publication are not the expressions of the Society or of the Tri-County chapter but may not be reproduced without special permission of the Tri-County chapter.

# LOCAL BUSINESSES

PLEASE SUPPORT OUR  
BUSINESS CARD  
ADVERTISERS LOCATED  
HERE AND ELSEWHERE IN  
THIS PUBLICATION...

**MAKE AN INVESTMENT  
IN OUR INDUSTRY'S  
FUTURE!**

If you would like to place a  
business card ad in Super  
Heat for the 2015-2016  
Tri-County ASHRAE season,  
please contact

Felix Monterroso via e-mail  
at...

[ashraetricounty@gmail.com](mailto:ashraetricounty@gmail.com)

*Looking for a unique marketing opportunity?*

*We've got a deal for you!*

*For only \$50 (that's right, only \$50!) you and  
many more can see your business card appear on  
THIS PAGE of THIS PUBLICATION*

*for the 2015-2016 Tri-County ASHRAE season!*

*Now that you're interested, send a \*.jpg version of  
your business card to [ashraetricounty@gmail.com](mailto:ashraetricounty@gmail.com)  
while sending a check for \$50 made out to  
Tri-County ASHRAE.*

*We will let you know where to send the check  
when you send your business card file to us at the  
above e-mail address.*

**FELIX MONTERROSO**

TCSH Editor

## ***“Trivia Night”***

***The ASHRAE Tri-County Chapter cordially invites you to attend our next meeting’s “Trivia Night” hosted at Claim Jumper Restaurant in Corona, CA.***

***Don’t miss out this fun event which will test and improve your engineering, HVAC and ASHRAE knowledge and understanding. It will be a great night to learn, share knowledge, and have fun!***

***Questions will be themed, and members will be engaged in ASHRAE related questions within their fields, so don’t worry, we won’t put you out of your comfort zone at any time! There will be several rounds of questions and attending members will be able to form groups of two.***

***The “Trivia Night” is intended for members to expand their knowledge, become more aware of topics relevant to ASHRAE, socialize, and have a good time.***

***So prepare to participate, laugh, learn, and earn some of the prizes described below:***

- ***First Place - Team of Two***  
***Free Pass to one of our remaining meetings for 2015-2016***
- ***Second Place - Team of Two***  
***One bottle of wine (each)***



# NOVEMBER TOUR

## ***“Brewery Tour — Wicks Brewing Co.”***

***Located in Riverside, CA just off the 91 Freeway, Wicks Brewing is one of the largest brewpubs in the Inland Empire with 16 taps, food, live entertainment and one of the only Brew-On-Premise (BOP) systems in California!***

***Wicks Brewing Co was founded in 2013 with the purpose of bringing great craft beer and food to the Inland Empire in an environment that the whole family could enjoy. Its brewpub houses a 7 bbl copper brew house, which is visible from the open floor taproom restaurant. Tri-County ASHRAE members who attended the tour were able to see brewers at work creating the next batch of craft beer. The taproom showcased a 6 station Brew-On-Premise (BOP) system which allowed guests the opportunity to brew their own beer under the personal guidance of one of the brewers. It was a fun event!***

***Tour included:***

***Beer Geek Tour Guide***

***Behind the Scenes Production Tour***

***Glance at Refrigeration Systems***

***Craft Beer Samples***

***Dinner***



# DECEMBER JOINT MEETING

## “Tri-County ASHRAE Joint Meeting”

*At our December Joint meeting, David Underwood, ASHRAE Society President, provided a fundamental overview of ASHRAE standard 189.1 (2014). He talked about sustainability, energy efficiency, water efficiency and construction design. He also discussed about the mandatory building design requirements and the prescriptive vs performance paths to meet such requirements.*

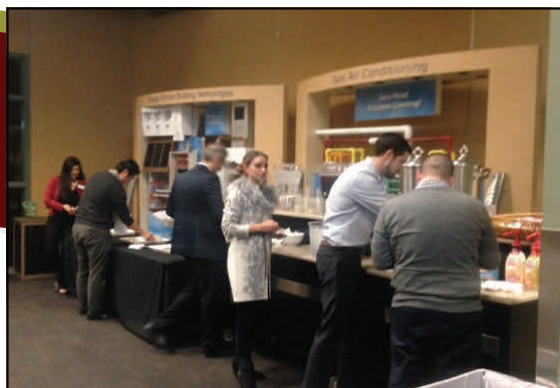
*The session reviewed sections 5 through 10 of standard 189.1; and David talked briefly about site sustainability, energy and water efficiency, indoor environmental quality, impact on atmosphere, materials & resources, as well as construction and plan building operation.*

*The meeting was finalized with an open forum for members from the Tri-County, Orange Empire, and SoCal ASHRAE Chapters to ask questions, and as expected, the discussion turned out to be very informative and beneficial for our attendees.*

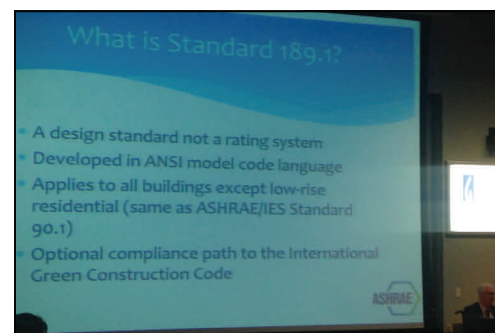
Joint Meeting with Orange Empire & Tri County  
 Tuesday December 15, 2015 at 5:30pm  
 Southern California Gas Energy Resource Center



David Underwood  
 ASHRAE Society President



# PRICELESS PICS



In the months of November and December, Tri-County ASHRAE members enjoyed of two end of the year special events. The Brewery Tour and the ASHRAE Tri-County Joint Meeting. Both events were fun, informative, and of great importance for the energy efficient oriented ASHRAE Tri-County members. The events were another great opportunity for learning and networking!

Photos courtesy of Kakeru Fujikawa Felix Monterroso.

# CPP STUDENT BRANCH EVENTS

On November 5th and 19th, Tri-County ASHRAE members Ian Villazana and Felix Monterroso, Energy Analysts from Willdan energy Solutions, performed a two-day session tutorial teaching students how to simulate energy models of non-residential buildings using eQuest, a building energy simulation tool supported as a part of the Energy Design Resources program and administered by Southern California Edison.

Ian and Felix provided a step by step tutorial to students showing them how to create a building shell, building zoning, HVAC systems, and how to assign such systems to the different building areas/zones. They also emphasized the importance of building loads and model calibration to match existing conditions when trying to use the modeling simulation to quantify expected energy savings by applying new and more efficient equipment and optimization strategies.

The two-day (1-hour each) sessions were very beneficial for students as they commented at the end of the sessions and will better encourage and prepare them for taking more HVAC classes and join the ASHRAE field of engineering.

Finally, Ian and Felix encouraged student members to attend the Tri-County ASHRAE monthly meetings, a great place for learning and networking.

By Felix Monterroso (Newsletter Editor)

Gil Kitching from KFP Group was the guest speaker at the Cal Poly Pomona ASHRAE Student Branch meeting, on December 3. Gil is a member of the Tri-County chapter of ASHRAE.

Gil did a fine job discussing the students education, future job choices, and ASHRAE, among other things. The CPP students were very appreciative of Gil's discussion. They also appreciated Gil for taking the time to come and talk to them.

Some of the highlights of Gil's discussion with the Student Branch members were:

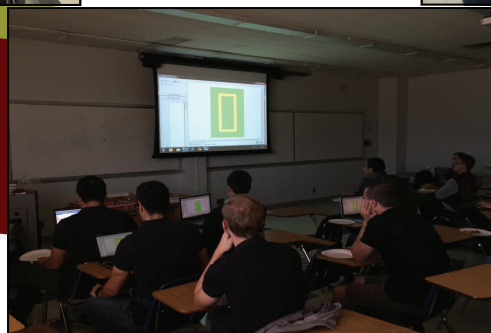
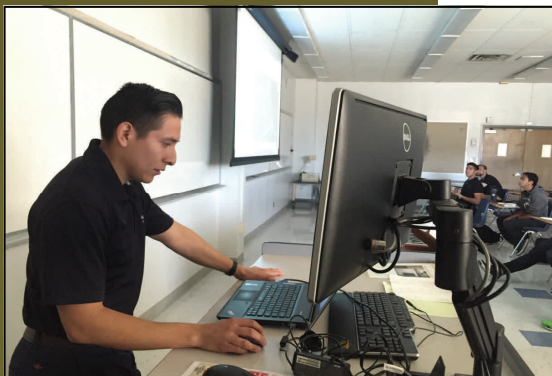
Their education- Their most important class will be Engineering Economic Analysis. Everything they design will need to be paid for.

Choose a job they will enjoy- Life is too short to work someplace where they will not enjoy being there. Choose a job they will love, then that job is not a job anymore.

Use their time wisely- Do not waste time. Always improve themselves by reading books, or using learning programs.

ASHRAE- Gives them important networking opportunities. They will always have a job when involved with local ASHRAE activities.

By Jim Toda (Student Activities Chair)



# JOB OPPORTUNITIES



*Willdan Energy Solutions (WES) is a national leader in energy efficiency. WES's expertise covers building system retrofits, commissioning and retro-commissioning, demonstrations of new technologies, energy efficiency education/outreach, sustainability strategy and local government partnerships.*

*WES's business is growing and we currently have an opening for a senior level energy efficiency Project Development Engineer in our Anaheim, CA office. The candidate must be able to work in a collaborative environment with our engineering staff, program managers and sales team to develop energy savings solutions and implement efficiency projects for our customers. The candidate must be able to identify efficiency and operational solutions for customers, develop proposals, sell projects, and oversee design and construction. This is a technical leadership role that involves directing entry level engineers, with oversight by senior level engineers.*

#### **Requirements:**

- Knowledge of mechanical equipment such as motors, pumps, and variable speed drives
- Knowledge of HVAC equipment and systems, such as chillers, cooling towers, air handlers, chilled and hot water loops, and boilers
- Knowledge of energy efficient lighting technology and lighting controls, such as LED, occupancy sensors, day-lighting, etc.
- BS in Mechanical Engineering or related field
- Professional Engineer's license preferred
- Min of 10 years' experience in energy efficiency, facility design/build, HVAC controls and/or performance contracting industry
- Computer proficiency, experience with Windows-based office applications required. Some travel required

*If you are interested forward your resume to [samoni@willdan.com](mailto:samoni@willdan.com) Attention: Shafi Amoni. Willdan Energy Solutions, 2401 E Katella Ave #300, Anaheim, CA 92806*



**TTG Engineers is looking for a full-time energetic, organized, and driven Mechanical Engineer in Ontario, California .**

**TTG Engineers is a leading full-service design engineering firm offering exceptional Structural, Mechanical, Electrical, Plumbing, Fire Protection and Civil design engineering services.**

#### **Responsibilities include:**

- Analysis, design skills, presenting technical information, equipment, quality and focus.
- Proficient in latest Energy Pro software and other HVAC system calculation software.
- Proficient in Auto CAD & REVIT 2012.
- Prepare Plan Check/OSHPD related documentation.
- Experience with Client Communication required.
- Generate project specific spec's & details
- Ability to work with minimal supervision
- Ability to take lead in multi-discipline coordination.
- Candidate will have excellent oral and written communication skills.
- Site Investigation and Inspection experience preferred.

#### **Requirements**

- 10+ years experience in HVAC systems design with institutional, commercial, educational, and healthcare projects.
- Bachelor's Degree in Mechanical Engineering
- California P.E. Professional Registration required
- Knowledge of LEED documentation

*If you are interested forward your resume to [tkuehl@ttgcorp.com](mailto:tkuehl@ttgcorp.com), Attention: Tricia Kuehl. TTG Engineers, 901 Via Piemonte, Suite 400, Ontario, CA 91764*



# 2015-2016 PARTIAL ROSTER

## Officers

<b>President</b>	<b>Shaw Gentry</b> Goss Engineering, Inc. — 951-233-1827
<b>President-Elect</b>	<b>Chris Robles</b> DMG — 562-692-1277
<b>Treasurer</b>	<b>Kakeru Fujikawa</b> Goss Engineering, Inc. — 714.310.8126
<b>Secretary</b>	<b>Ian Villazana</b> Willdan Energy Solutions — 714-278-8325
<b>Board of Governors</b>	
	<b>John Garcia</b> RF MacDonald Company — 714-412-1534
	<b>Jaime Lopez</b> Southern California Gas — 951-533-1121
<b>CTTC</b>	<b>Adam Stadnik</b> Southern California Edison — 909-261-7632

## Committee Chairs

<b>Membership Promotion</b>	<b>Ryan Rodriguez</b> Willdan Energy Solutions — 626-260-6623
<b>Historian</b>	<b>Jim Toda</b> Custom Cooling Company — 909.599.9222
<b>Student Activities</b>	<b>Jim Toda</b> Custom Cooling Company — 909.599.9222
<b>Research Promotion</b>	<b>Joe Sanders</b> DMG — 951-310-3235
<b>Membership Promotion Co-Chair</b>	<b>Erick Delgado</b> Air Conditioning Specialties Co. — 626.840.9001
<b>Newsletter Editor</b>	<b>Felix Monterroso</b> Willdan Energy Solutions — 626.629.9658
<b>Home Page Webmaster / Technology Transfer</b>	<b>Felix Monterroso</b> Willdan Energy Solutions — 626.629.9658



*Everyone in Tri-County is responsible for building a better tomorrow!*

# Tri-County SUPER HEAT

6040A Irwindale Avenue,  
Irwindale, CA 91702

CELEBRATING  
PLUS  
**25** YEARS  
1989-2015  
TRI-COUNTY ASHRAE!

— journal of the tri-county chapter of the —

## American Society of Heating, Refrigerating, and Air Conditioning Engineers

ASHRAE, founded in 1894, is an international organization of 55,000 persons. Its sole objective is to advance through research, standards writing, publishing and continuing education the arts and sciences of heating, ventilation, air conditioning and refrigeration to serve the evolving needs of the public.

1988-1989	SUKHDEV MATHAUDHU
1989-1990	SUKHDEV MATHAUDHU
1990-1991	JEFF LEONARD
1991-1992	DEL THOMAS
1992-1993	TONY PIERCE
1993-1994	GREG MORIN
1994-1995	TONY HENKEL
1995-1996	JOHN HAVILAND
1996-1997	JOEL CARTER
1997-1998	CHANDRA CHINDE
1998-1999	JIM TODA
1999-2000	RICHARD MCLEOD
2000-2001	KERRY PARKER
2001-2002	DEBRA CHAVIRA-SMITH
2002-2003	LUCAS HYMAN
2003-2004	JOE SANDERS
2004-2005	BOB GASTEL
2005-2006	ART ANDRES
2006-2007	JIM PARKER
2007-2008	KYLE LANDIS
2008-2009	RICK CREED
2009-2010	ROBERT MORSE
2010-2011	TIM HALD
2011-2012	JAIMELopez
2012-2013	ERICK DELGADO
2013-2014	NICOLAS ROSNER
2014-2015	RYAN RODRIGUEZ