

Tri-County SUPER Heat

ASHRAE

American Society of Heating, Refrigeration, and Air-Conditioning Engineers

in this issue

Membership Promotion Report...	pg.1
Business Card Ads...	pg.2
Meeting Preview...	pg.3
Student Activities...	pg.4
Pics From Our Last Meeting...	pg.5
2012-2013 Partial Roster...	pg.6



MEMBERSHIP Report

Meeting Location

Date:	January 15, 2013
Location:	Coco Palm, Pomona, CA
Board Meeting:	5:00
Networking Hour:	6:00
Dinner and Program:	7:00



We look forward to seeing you again!
Coco Palm Restaurant is located on Restaurant Drive off of Fairplex Drive, just north of the 10 Freeway. Please e-mail Erick at edelgado@acspecialties.com to reserve your spot for the upcoming meeting.

Coco Palm Restaurant
1600 Fairplex Drive
Pomona, CA 91768

COST: Adults (\$40) / Students (\$20)

All Tri-County members can be effective Membership Promotion recruiters. If you know anyone who may be interested in joining ASHRAE, please contact me at todayam@yahoo.com. Tri-County President Erick Delgado was responsible for signing up the below new members.

The Tri-County Chapter of ASHRAE welcomes the following new members who recently joined the chapter:

Name	Company
Ifor Santiago	ICI Engineers
Rey Balignasay	ICI Engineers

NOTE: Statements made in this publication are not the expressions of the Society or of the Tri-County chapter but may not be reproduced without special permission of the Tri-County chapter.

Looking for a unique marketing opportunity?

Have we got a deal for you! For only \$50 (that's right \$50!) you and many more can see your business card appear on THIS PAGE of THIS PUBLICATION for the remainder of the 2012-2013 Tri-County ASHRAE season!

*Now that you're interested, send a *.jpg version of your business card to Adam Stadnik at adam.stadnik@gmail.com while sending a check for \$50 made out to Tri-County ASHRAE to Adam. Adam will let you know where to send the check when you send your business card file to him at his e-mail address.*

local



businesses

 Tel (909) 596-6856
Fax (909) 596-3255
www.air-ex.com
License #418759


Mike Lynaugh
Control Engineer
m.lynaugh@air-ex.com

Air-Ex
Air Conditioning, Inc.
157 Gentry St. • Pomona, CA 91767-2184
THE AIR CONDITIONING EXPERTS

Have questions about Controls?
Call us today for answers.

**AIR CONDITIONING
SPECIALTIES
COMPANY**



ERICK DELGADO
edelgado@acspecialties.com

(562) 694-8543
(714) 738-7711
850 East La Habra Blvd. • La Habra, California 90631
www.acspecialties.com

FAX (562) 697-6296

PLEASE SUPPORT OUR BUSINESS CARD ADVERTISERS LOCATED HERE AND ELSEWHERE IN THIS PUBLICATION...

**MAKE AN INVESTMENT IN OUR
INDUSTRY'S FUTURE!**

If you would like to place a business card ad in Super Heat for the 2012-2013 Tri-County ASHRAE season, please contact Adam Stadnik via e-mail at ...
adam.stadnik@gmail.com


HVAC engineered products
fans • dampers • air distribution • terminal units • sound control

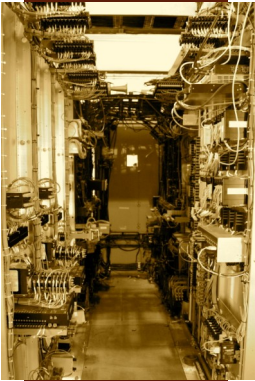
VICTOR PETRING
Direct Line: (800) 867-6247, Ext. 152

(714) 939-9500 Office
(714) 939-9800 Fax
www.toroaire.com

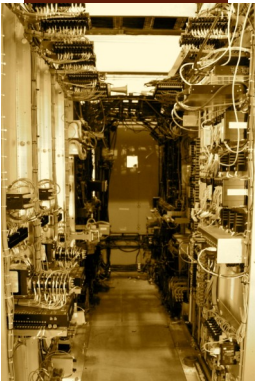
1654 S. Lewis Street
Anaheim, CA 92805
victor@toroaire.com

MEETING *Preview*

Central Chiller Plants Turn Up Gold



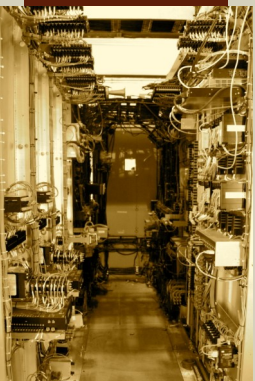
Energy consumption of chiller plants often goes unchecked. This area has literally been a gold mine of conservation opportunities for 99% of the chiller plants visited. Starting with the pumping system, what pressure differential is there? What is needed in the buildings or air handlers served? What about the devices absorbing the pressure differential? Are they needed or is there another way to accomplish the goal? Is there a balance between the required flow and the pumps installed? Is it a constant speed primary-secondary, a variable primary, or a constant primary-variable secondary pumping system? If it is variable speed pumping, what controls the speed of the pumps?



How about the control system? Are the pumps controlled as one element of an integrated control system, one that reads the needs of the devices served to determine the pump speed and pressure differential? Can the operator easily diagnose the total plant operation with the control system central station? In case of an emergency, can one dial in and look at all systems from a laptop from off-site? Are the flow readouts reliable? Does the control system integrate directly with the chiller control system?

Want to talk about control systems and chilled water plants? Come to the meeting and do just that! We hope to see you there!

About Our Distinguished Lecturer



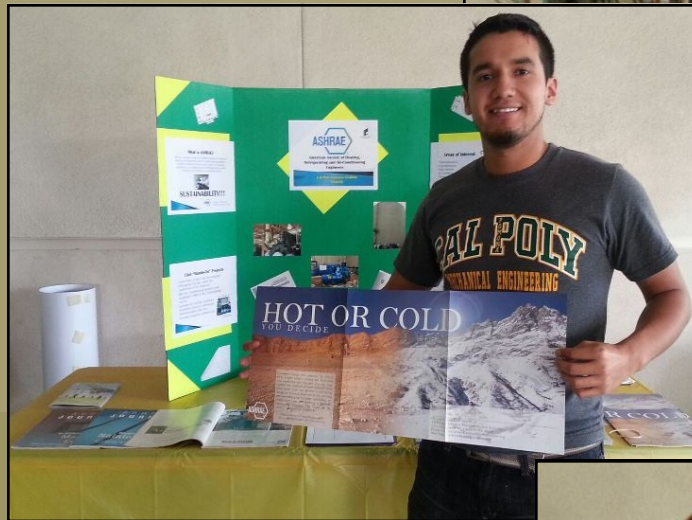
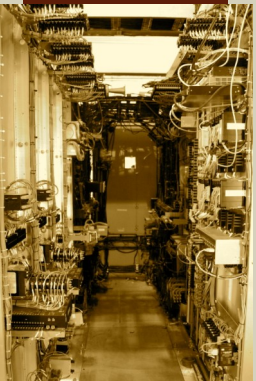
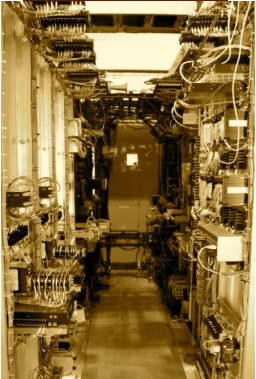
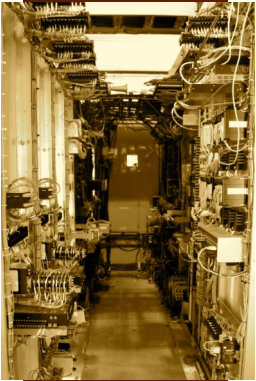
Verle Williams, a registered Professional Engineer and a Certified Energy Manager, is the owner and president of Utility Services Unlimited, a professional consulting firm specializing in energy efficient systems studies, designs and performance verification. Mr. Williams is a 1960 graduate of the University of Colorado at Boulder, with a BS in Mechanical Engineering, and a BS in Business.

Mr. Williams' specialty for 41 years has been automatic controls, their application to solve complex challenges, and their design for reliable and simplified operation. His consulting services have taken him into many complex plants and challenged him to get "out of the box" and think about solutions that are outside the normal procedures and systems format.

Mr. Williams has spoken on various energy-related topics to many national society meetings, local technical society meetings, and civic organization meetings, and has written over 35 published articles and papers. He has taught energy conservation classes at the University of California, San Diego Engineering Extension College, North Seattle Community College, and miscellaneous refresher classes in the area. Mr. Williams is very active in local and Society-level ASHRAE activities. He is a Fellow/Life Member of ASHRAE and has received numerous awards through the years.

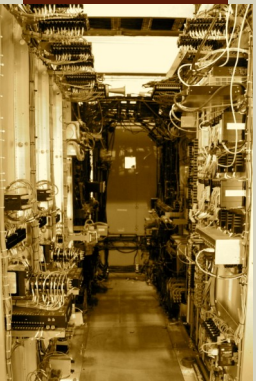
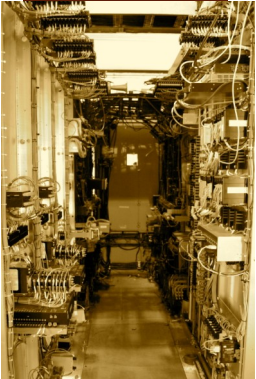
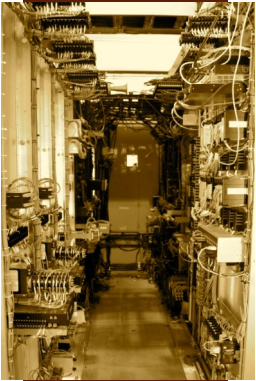
STUDENT *Activities*

Jim Toda was recently on-hand to catch some of the Cal Poly Pomona student ASHRAE chapter members in action. Is that a Bronco getting ready to read the ASHRAE Fundamentals hand book?!? Check it out!



PRICELESS *Pics*

December's Tri-County Family Night was something special. The Great Raguzi entertained with his unique brand of close-up magic and everyone in attendance had a great time. We're looking forward to even more fun in 2013! Please join us!



2012-2013 *partial roster*

Officers

President	Erick Delgado Air Conditioning Specialties Co. — 714-738-7711
President-Elect	Gil Kitching Energy Inspectors, Inc. — 760-761-3695
Treasurer	Nick Rosner US Air Conditioning — 626-854-6850
Secretary	Position Open! Apply Within!

Board of Governors

Past-President	Jaime Lopez RF MacDonald Company — 714-257-0900
	Tim Hald Barr Engineering, Inc. — 562-944-1722
	Adam Stadnik SCE Field Engineering — 909-261-7632

Committee Chairs

Historian	Jim Toda Conditioning Components — 562-461-1372
Resource Promotion	Joe Sanders DES — 951-310-3235
Student Activities	Mike Lo SCE Customer Energy Efficiency & Solar Division — 626-633-3035
Newsletter Editor	Adam Stadnik SCE Field Engineering — 909-261-7632
Home Page Webmaster	Nick Rosner US Air Conditioning — 626-854-6850
Technology Transfer	
Membership Promotion	Jim Toda Conditioning Components — 562-461-1372



Everyone in Tri-County is responsible for building a better tomorrow!

Tri-County **SUPER Heat**

13796 San Luis Rey Court
Rancho Cucamonga, California 91739

CELEBRATING,
20 **PLUS**
YEARS
1989-2013
TRI-COUNTY ASHRAE!

PAST PRESIDENTS

1988-1989	SUKHDEV MATHAUDHU
1989-1990	SUKHDEV MATHAUDHU
1990-1991	JEFF LEONARD
1991-1992	DEL THOMAS
1992-1993	TONY PIERCE
1993-1994	GREG MORIN
1994-1995	TONY HENKEL
1995-1996	JOHN HAVILAND
1996-1997	JOEL CARTER
1997-1998	CHANDRACHINDE
1998-1999	JIM TODA
1999-2000	RICHARD MCLEOD
2000-2001	KERRY PARKER
2001-2002	DEBRACHAVIRA-SMITH
2002-2003	LUCASHYMAN
2003-2004	JOE SANDERS
2004-2005	BOB GASTEL
2005-2006	ART ANDRES
2006-2007	JIM PARKER
2007-2008	KYLE LANDIS
2008-2009	RICK CREED
2009-2010	ROBERT MORSE
2010-2011	TIM HALD
2011-2012	JAIME LOPEZ

— journal of the tri-county chapter of the —

American Society of Heating, Refrigerating, and Air Conditioning Engineers

ASHRAE, founded in 1894, is an international organization of 55,000 persons. Its sole objective is to advance through research, standards writing, publishing and continuing education the arts and sciences of heating, ventilation, air conditioning and refrigeration to serve the evolving needs of the public.