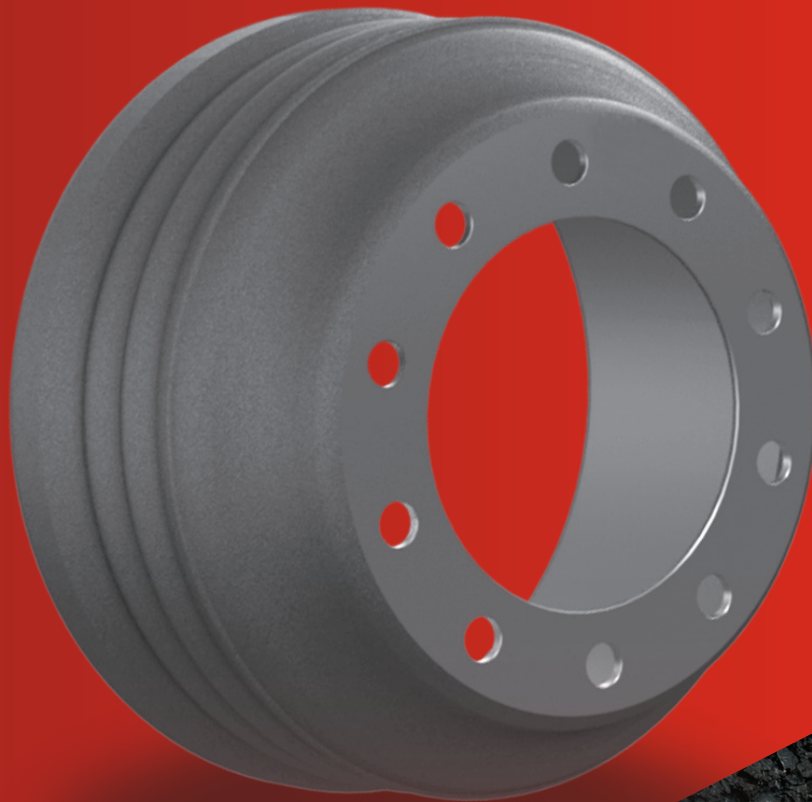


# New Generation Lightweight Brake Drum

COMPOSITE STEEL SHELL | CENTRIFUGE CAST BRAKING SURFACE



DRUMS | HUBS | ROTORS | SLACK ADJUSTERS





## New Generation Lightweight Brake Drum

Brakestop New Generation series brake drums address the need for a lightweight, but technically superior, brake drum that will help North America's fleets cut costs and maximize payloads. The Brakestop series composite steel shell brake drums are 20% lighter than standard cast iron drums.

18 - 22 lbs per drum savings

100 - 300 lbs per vehicle savings

Backed by a life-time warranty

All drums are balanced to TMC recommended standards

High carbon steel shell with knurled design for better lining layer adhesion Meets and exceeds FMVSS 121 requirements and Ford

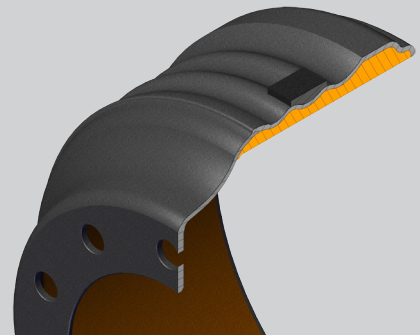
Durability

Rated up to 23,000 lbs GAWR



### Steel shell and centrifuge cast braking surface technology

Our higher carbon steel shell is precision formed and we've also added knurling to the interior of the shell to provide the best fusion between the shell and gray iron. The shell is then mounted in a high-speed rotating fixture and the gray iron material is poured into the shell braking surface area.



#### SPECIFICATIONS

Part Number	Brake Size	Weight (lbs)	Meritor X30™ Equivalent	Stemco CentriFuse® Equivalent
BS80002-018	16.5 x 7"	88	53123537002 (93.5 lbs)	89996B (89 lbs)
BS80005-018	16.5 x 5"	73	53123816002 (80.4 lbs)	600001 (75 lbs)
BS80008-018	16.5 x 8.625"	102	53123771002 (103 lbs)	600026 (100 lbs)

Call your sales representative for pricing and distribution channels.

For more information:

(954)-681-3122

[www.brakestop.com](http://www.brakestop.com)

FP Engineering Investment LLC

8565 W 44th Ave #102 Hialeah, FL 33018

