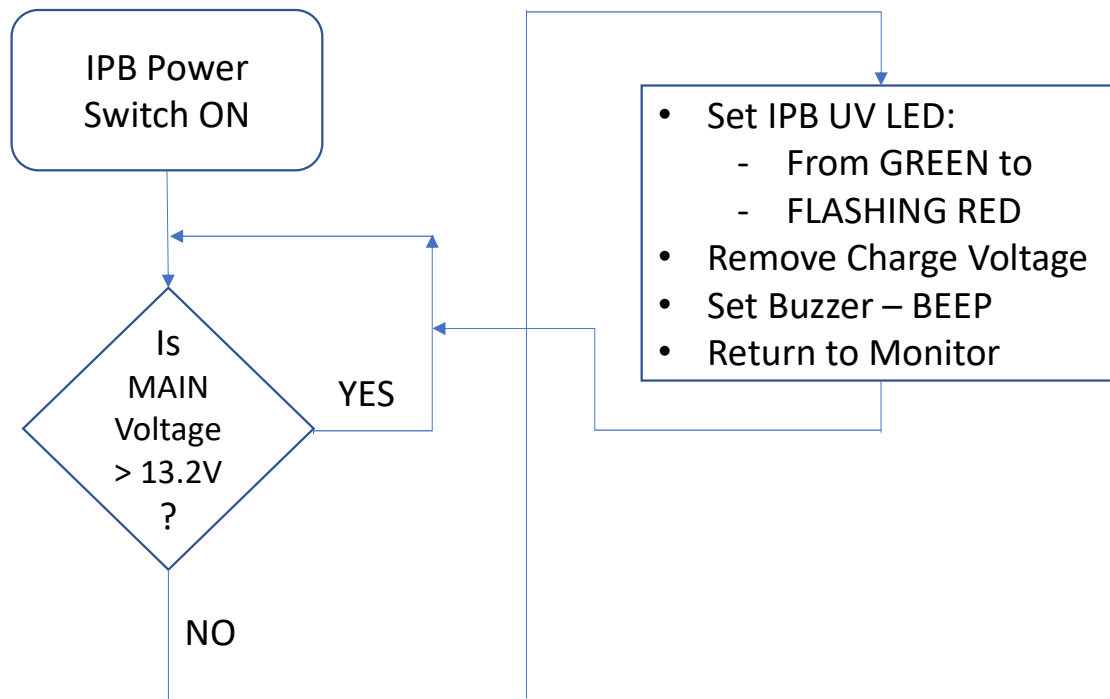


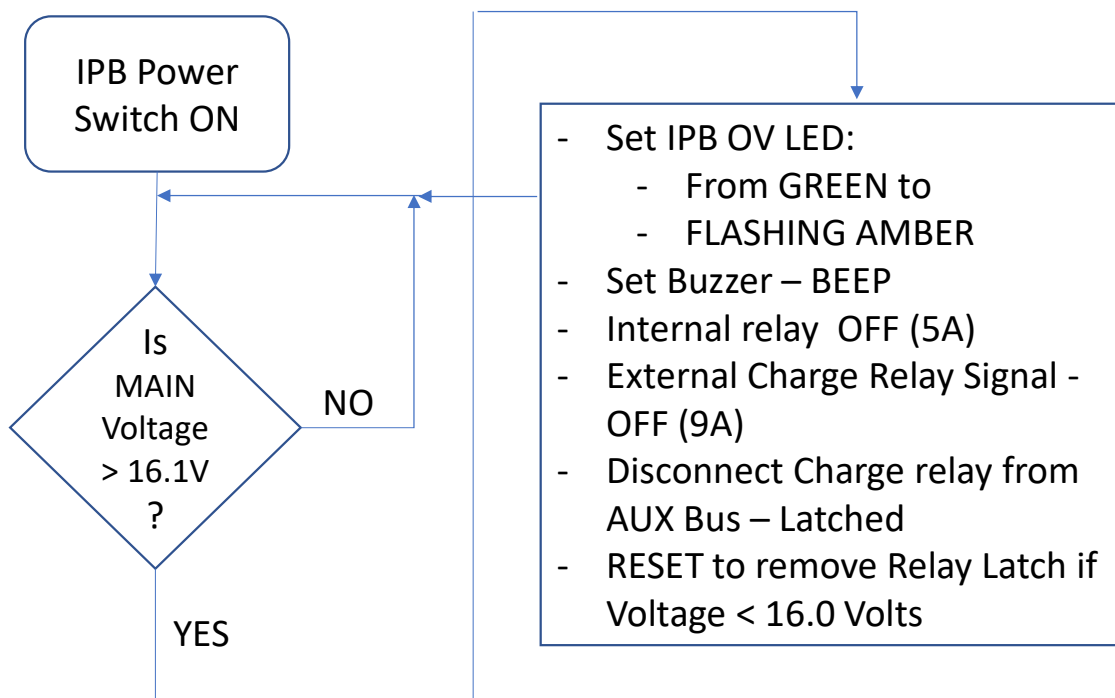
IPB Functions (Low Volts):

- IPB Monitors Main Bus for < 13.2 Volts (Lithium batteries)



IPB Functions (Over Volts):

- IPB Monitors Main Bus for > 16.1 Volts (Lithium batteries)



IPB Functions (Test Mode):

- IPB Left TEST Switch (Momentary Up)
 - Tests Under Voltage Function
- IPB Right TEST Switch Momentary Up/Down
 - RESET Over Voltage Function in Up Position
 - TEST Overvoltage Function in Down Position
- IPB AUDIO OFF removes Audio
 - Switch in Down position
 - Buzzer and Audio Output
 - EFIS output signal OFF





- Dual Battery Switch & LED's



DBS Functions:

- Mount Horizontal or Vertical
- MAIN Switch Position
 - Lift-N-Lok to MAIN
 - Green MAIN Light Illuminates
- AUX Switch Position
 - Lift-N-Lok to AUX
 - Green AUX Light Illuminates
- TEST/OFF Switch Position
 - Lift-N-Lok to TEST (OFF)
 - Green Lights Dark, W/MASTER ON
 - Both Green W/MASTER Switch OFF (& IPB ON)
 - Both Dark W/IPB OFF

