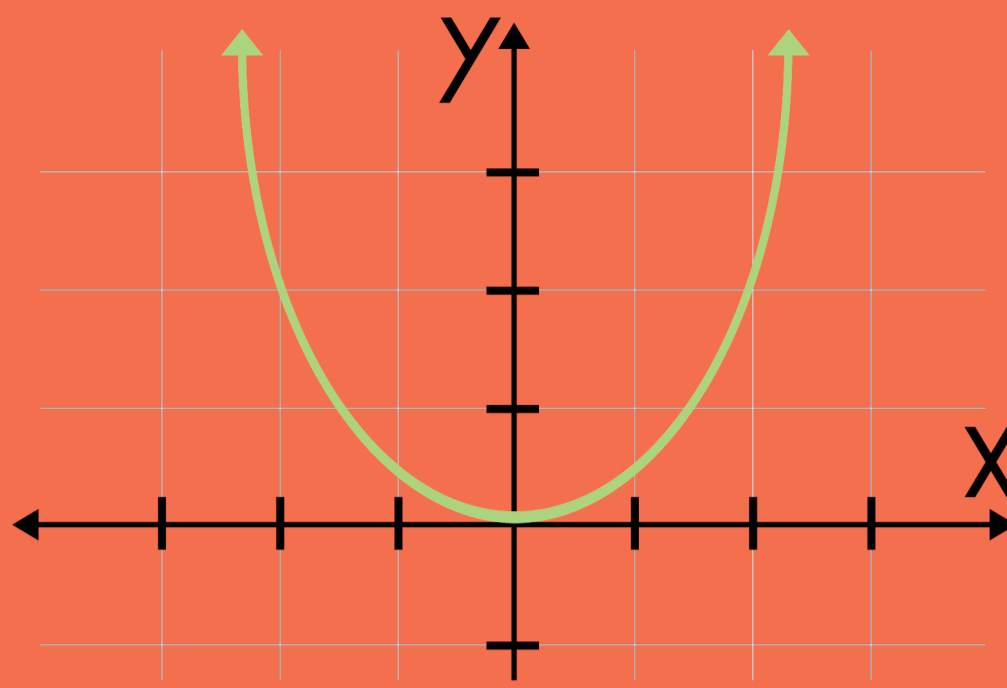


Die Parabool



DIE EIENSKAPPE



$$f(x) = a(x-p)^2 + q$$

Formule in Draaipunt-vorm



$$y = ax^2 + bx + c$$

Formule in Standaard-vorm

Maksimum



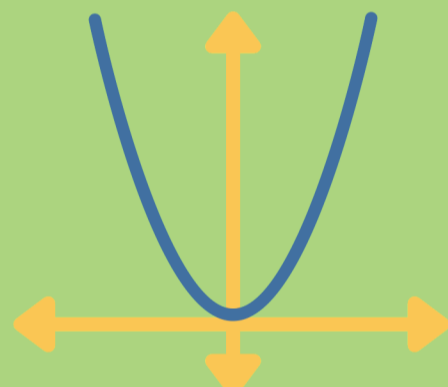
$$a < 0$$

Gebied
 $\{x : x \in \mathbb{R}\}$

Terrein
 $\{y : y \in \mathbb{R}, y \leq q\}$

$$a > 0$$

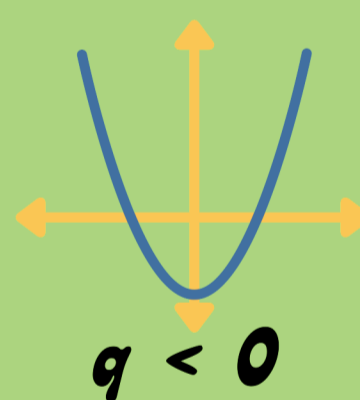
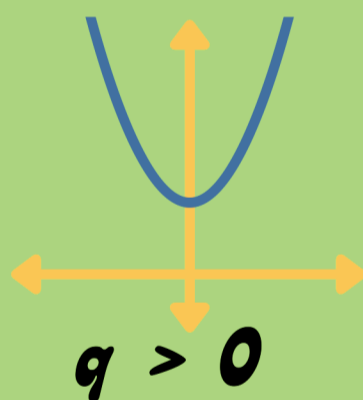
Minimum



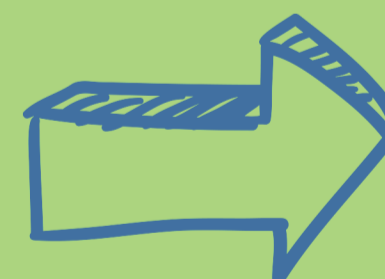
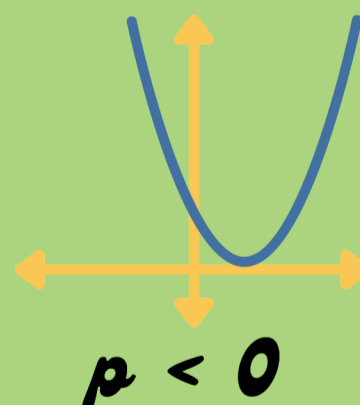
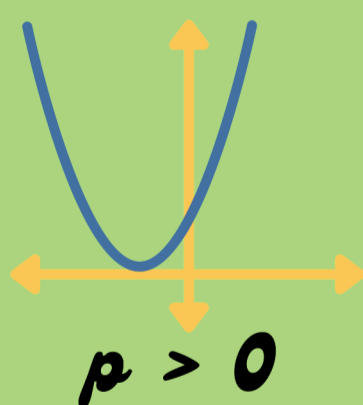
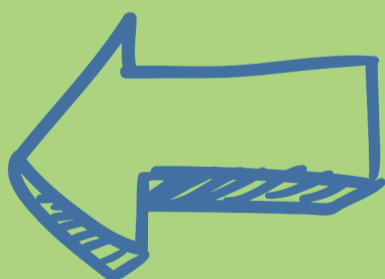
Gebied
 $\{x : x \in \mathbb{R}\}$

Terrein
 $\{y : y \in \mathbb{R}, y \geq q\}$

Vertikale verskuiwing

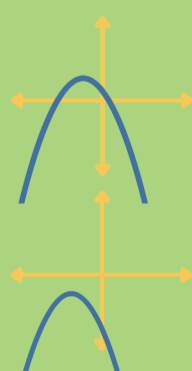


Horisontale verskuiwing



$$p > 0$$

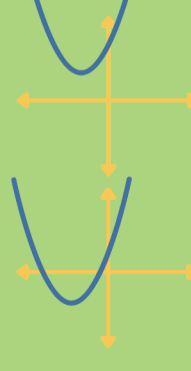
$$a < 0$$



$$q > 0$$

$$q < 0$$

$$a > 0$$



$$p < 0$$

$$a < 0$$



$$q > 0$$

$$q < 0$$

$$a > 0$$

