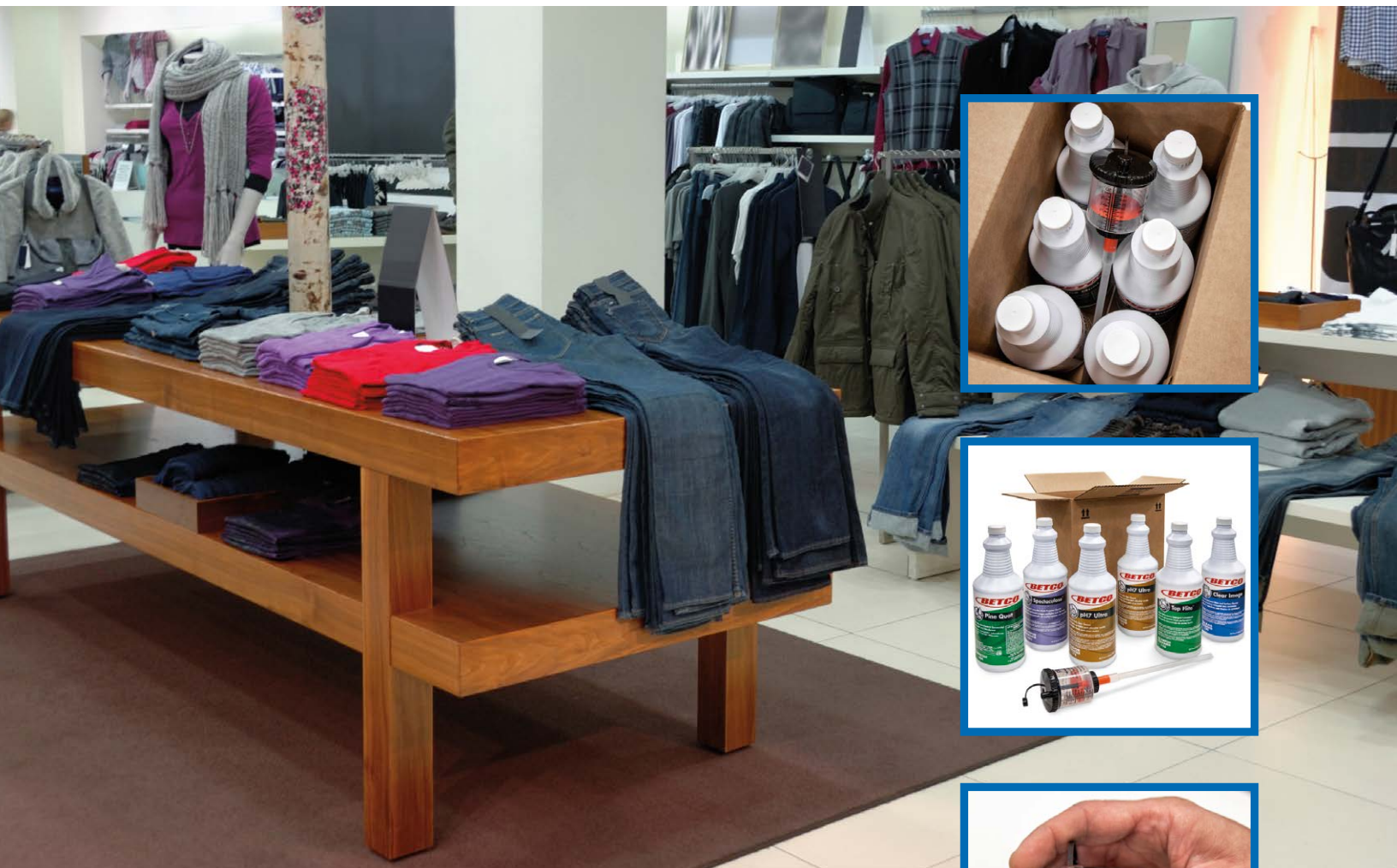


FastPak™

Precision Dosing Anywhere



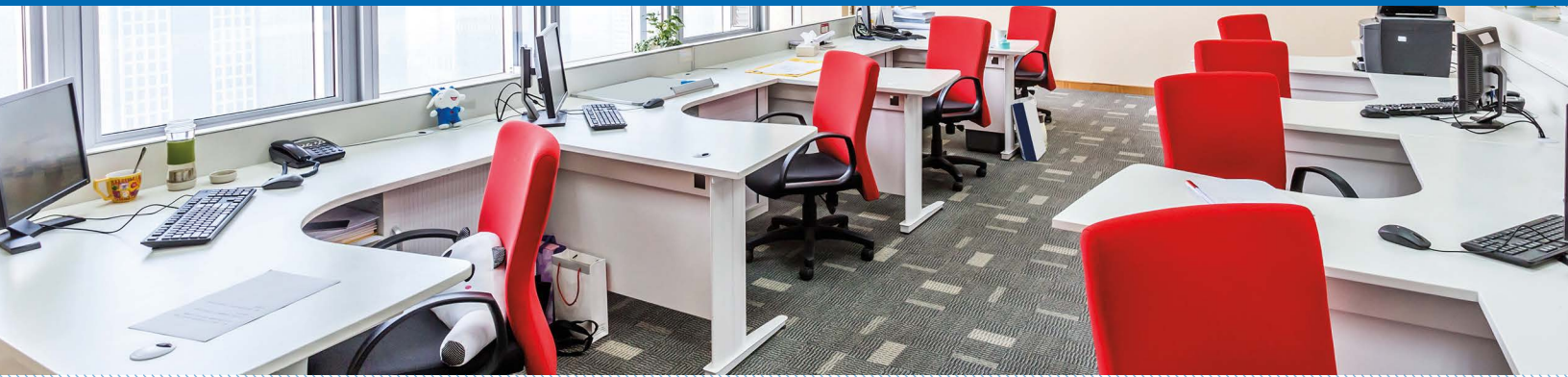
Our Strongest Cleaning Power in Our Smallest Pack

FastPak™ combines professional, concentrate cleaners and disinfectants, with safe, precise dosing to enhance clean, lower costs and simplify your operations.

This small variety pack of quart size concentrates provides the most accurate solution to dilution control management.

- **Simple** - Easy-to-use, no training required, no complicated equipment
- **Precise** - Easily measure ¼ to 3 oz. with accurate results every time
- **Safe** - Reduce unnecessary spills or splash risks
- **Value** - Savings with concentrates and eliminates overdosing





FastPak™

Precision Dosing Anywhere

Get consistent, precise dilution for any bottle or bucket every time. Over or under dosing can leave behind a sticky residue or an unclean surface. FastPak™ provides accurate dosing for concentrates without the need for expensive equipment, messy dosing bottles, and a savings over expensive liquid pods and pouches. No water hookup or maintenance required, the small pack takes up little space. Save time with minimal training and an on-the-go professional clean.

Measuring and dispensing liquids made simple.

The lightweight, reusable proportioner cap makes dilution control easy with its twist, squeeze, pour design. Measure ¼ to 3 oz. in a single pour.

How It Works

1. **Twist** the lid of the proportioner to set the orange fill line and secure to the bottle.
2. **Squeeze** the bottle gently to fill the proportioner to the fill line.
3. **Pour** into a secondary container with water.



Markets

- Building Service Contractors
- Retailers
- Office buildings
- Long-term care centers
- Grocery and convenient stores
- Gyms and fitness centers

Betco's FastPak is the safest, small format, comprehensive, precise mobile dosing system available today.



888-GO BETCO | betco.com

©2021 Betco Corporation
All Rights Reserved.
400 Van Camp Road
Bowling Green, Ohio 43402
Item #92573-92

